

Pinellas Property Market Report

1,087 matching properties • May 30, 2026

| Filters applied | Headline numbers |
|--------------------------------------|-----------------------------------|
| Property type: Single Building Store | Properties matched: 1,087 |
| | Median market value: \$500,000 |
| | Mean market value: \$892,302 |
| | Min / Max: \$50,500 / \$7,840,000 |
| | Mean square footage: 5,434 |

Top 200 properties by market value

| Address | City | Type | Market Value | Sq Ft | Year | Annual Tax |
|-----------------------|-----------------|-----------------------|--------------|--------|------|------------|
| 401 POINSETTIA AVE | Clearwater | Single Building Store | \$7,840,000 | 23,000 | 2013 | \$155,011 |
| 301 3RD ST S | St. Petersburg | Single Building Store | \$6,090,000 | 14,762 | 2003 | \$121,311 |
| 2550 34TH ST N | St. Petersburg | Single Building Store | \$5,415,000 | 30,794 | 2017 | \$107,865 |
| 10701 GULF BLVD | Treasure Island | Single Building Store | \$5,125,000 | 22,959 | 2010 | \$86,474 |
| 7610 4TH ST N | St. Petersburg | Single Building Store | \$4,545,000 | 18,814 | 2006 | \$90,535 |
| 7035 US HIGHWAY 19 N | Pinellas Park | Single Building Store | \$4,485,000 | 29,832 | 1994 | \$95,898 |
| 703 COURT ST | Clearwater | Single Building Store | \$4,460,000 | 16,605 | 2016 | \$90,637 |
| 3929 TAMPA RD | Oldsmar | Single Building Store | \$4,420,000 | 24,992 | 2009 | \$77,776 |
| 1211 1ST AVE N | St. Petersburg | Single Building Store | \$4,300,000 | 5,647 | 1946 | \$85,655 |
| 44091 US HIGHWAY 19 N | Tarpon Springs | Single Building Store | \$4,250,000 | 25,130 | 2008 | \$80,529 |
| 16494 US HIGHWAY 19 N | Clearwater | Single Building Store | \$4,025,000 | 20,292 | 2016 | \$76,613 |
| 337 75TH AVE | St. Pete Beach | Single Building Store | \$3,970,000 | 14,504 | 1991 | \$64,264 |
| 400 POINSETTIA AVE | Clearwater | Single Building Store | \$3,950,000 | 10,194 | 1989 | \$77,699 |

| Address | City | Type | Market Value | Sq Ft | Year | Annual Tax |
|----------------------------------|-----------------|-----------------------|--------------|---------|------|------------|
| 467 MANDALAY AVE | Clearwater | Single Building Store | \$3,925,000 | 9,940 | 1975 | \$77,409 |
| 15101 GULF BLVD | Madeira Beach | Single Building Store | \$3,800,000 | 16,157 | 2015 | \$63,490 |
| 923 N MCMULLEN BOOTH RD | Clearwater | Single Building Store | \$3,750,000 | 106,192 | 1957 | \$77,409 |
| 845 4TH ST N | St. Petersburg | Single Building Store | \$3,625,000 | 12,436 | 2001 | \$72,209 |
| 10801 ROOSEVELT BLVD | St. Petersburg | Single Building Store | \$3,620,000 | 16,574 | 2015 | \$72,408 |
| 3851 4TH ST N | St. Petersburg | Single Building Store | \$3,590,000 | 14,879 | 2006 | \$71,512 |
| 1801 GULF TO BAY BLVD | Clearwater | Single Building Store | \$3,585,000 | 15,598 | 1996 | \$69,378 |
| 10563 PARK BLVD | Seminole | Single Building Store | \$3,520,000 | 15,641 | 1995 | \$56,132 |
| 6994 US HIGHWAY 19 N | Pinellas Park | Single Building Store | \$3,495,000 | 15,930 | 1996 | \$65,051 |
| 9501 US HIGHWAY 19 N | Pinellas Park | Single Building Store | \$3,480,000 | 31,958 | 1976 | \$75,123 |
| 2598 BAYSHORE BLVD | Dunedin | Single Building Store | \$3,465,000 | 15,740 | 1998 | \$61,342 |
| 33670 US HIGHWAY 19 N | Palm Harbor | Single Building Store | \$3,460,000 | 15,716 | 1997 | \$62,824 |
| 13705 PARK BLVD | Seminole | Single Building Store | \$3,450,000 | 15,680 | 1995 | \$62,817 |
| 7600 STARKEY RD | Seminole | Single Building Store | \$3,450,000 | 28,294 | 1980 | \$55,813 |
| 2830 54TH AVE S | St. Petersburg | Single Building Store | \$3,430,000 | 39,600 | 1988 | \$68,325 |
| 3700 34TH ST N | St. Petersburg | Single Building Store | \$3,420,000 | 15,592 | 1995 | \$68,125 |
| 1604 S MISSOURI AVE | Clearwater | Single Building Store | \$3,415,000 | 15,525 | 1996 | \$66,959 |
| 1410 MAIN ST | Dunedin | Single Building Store | \$3,400,000 | 19,433 | 2018 | \$63,630 |
| 10551 GULF BLVD | Treasure Island | Single Building Store | \$3,400,000 | 12,206 | 1991 | \$57,925 |
| 35553 US HIGHWAY 19 N | Palm Harbor | Single Building Store | \$3,395,000 | 15,432 | 2004 | \$61,741 |
| 1880 N BELCHER RD | Clearwater | Single Building Store | \$3,365,000 | 15,294 | 1995 | \$65,797 |
| 814 CLEVELAND ST | Clearwater | Single Building Store | \$3,350,000 | 14,891 | 2000 | \$68,079 |
| 1750 MAIN ST | Dunedin | Single Building Store | \$3,350,000 | 35,100 | 1976 | \$60,110 |
| 5400 DR MARTIN LUTHER KING JR ST | St. Petersburg | Single Building Store | \$3,335,000 | 20,722 | 1954 | \$67,229 |
| 1477 MAIN ST | Dunedin | Single Building Store | \$3,310,000 | 15,036 | 1998 | \$58,614 |

| Address | City | Type | Market Value | Sq Ft | Year | Annual Tax |
|---------------------------------|----------------|-----------------------|--------------|--------|------|------------|
| 10121 SEMINOLE BLVD | Seminole | Single Building Store | \$3,310,000 | 15,050 | 1995 | \$60,645 |
| 3350 CENTRAL AVE | St. Petersburg | Single Building Store | \$3,310,000 | 14,415 | 1993 | \$66,432 |
| 5405 66TH ST N | St. Petersburg | Single Building Store | \$3,310,000 | 15,022 | 2002 | \$76,208 |
| 3770 TAMPA RD | Oldsmar | Single Building Store | \$3,310,000 | 15,036 | 1998 | \$58,332 |
| 14004 WALSINGHAM RD | Largo | Single Building Store | \$3,300,000 | 14,998 | 2001 | \$63,607 |
| 5767 38TH AVE N | St. Petersburg | Single Building Store | \$3,300,000 | 15,708 | 2003 | \$66,233 |
| 900 49TH ST N | St. Petersburg | Single Building Store | \$3,290,000 | 14,936 | 1998 | \$65,536 |
| 710 WELCH CSWY | Madeira Beach | Single Building Store | \$3,275,000 | 14,740 | 2013 | \$53,111 |
| 800 WEST BAY DR | Largo | Single Building Store | \$3,265,000 | 14,840 | 2000 | \$62,658 |
| 10697 ULMERTON RD | Largo | Single Building Store | \$3,260,000 | 14,488 | 2004 | \$61,898 |
| 2742 4TH ST N | St. Petersburg | Single Building Store | \$3,260,000 | 15,140 | 2014 | \$69,719 |
| 450 MANDALAY AVE | Clearwater | Single Building Store | \$3,250,000 | 12,548 | 2003 | \$65,507 |
| 3426 CENTRAL AVE | St. Petersburg | Single Building Store | \$3,210,000 | 15,680 | 2008 | \$63,942 |
| 2501 TYRONE BLVD N | St. Petersburg | Single Building Store | \$3,210,000 | 15,456 | 1993 | \$63,942 |
| 2295 EAST BAY DR | Largo | Single Building Store | \$3,205,000 | 14,252 | 1993 | \$60,854 |
| 2495 MCMULLEN BOOTH RD | Safety Harbor | Single Building Store | \$3,195,000 | 14,208 | 2015 | \$55,996 |
| 2195 66TH ST N | St. Petersburg | Single Building Store | \$3,190,000 | 14,488 | 2005 | \$63,544 |
| 10196 66TH ST | Pinellas Park | Single Building Store | \$3,185,000 | 14,478 | 2006 | \$67,674 |
| 875 DR MARTIN LUTHER KING JR ST | St. Petersburg | Single Building Store | \$3,180,000 | 14,452 | 1993 | \$64,241 |
| 1701 MCMULLEN BOOTH RD | Safety Harbor | Single Building Store | \$3,180,000 | 14,466 | 2006 | \$55,822 |
| 8905 BRYAN DAIRY RD | Seminole | Single Building Store | \$3,170,000 | 14,856 | 2003 | \$58,201 |
| 2991 ROOSEVELT BLVD | Largo | Single Building Store | \$3,170,000 | 14,406 | 2002 | \$60,664 |
| 7751 49TH ST N | Pinellas Park | Single Building Store | \$3,155,000 | 14,392 | 2002 | \$66,835 |
| 3077 54TH AVE S | St. Petersburg | Single Building Store | \$3,150,000 | 14,776 | 2005 | \$62,747 |
| 13553 66TH ST | Largo | Single Building Store | \$3,140,000 | 33,956 | 1973 | \$56,818 |

| Address | City | Type | Market Value | Sq Ft | Year | Annual Tax |
|-----------------------|----------------|-----------------------|--------------|--------|------|------------|
| 1505 S BELCHER RD | Clearwater | Single Building Store | \$3,130,000 | 14,272 | 2002 | \$61,153 |
| 1765 GULF TO BAY BLVD | Clearwater | Single Building Store | \$3,080,000 | 14,960 | 2007 | \$59,605 |
| 31594 US HIGHWAY 19 N | Palm Harbor | Single Building Store | \$3,075,000 | 27,888 | 1988 | \$55,513 |
| 3994 TYRONE BLVD N | St. Petersburg | Single Building Store | \$3,055,000 | 13,872 | 1998 | \$61,552 |
| 40528 US HIGHWAY 19 N | Tarpon Springs | Single Building Store | \$3,050,000 | 30,282 | 1969 | \$58,772 |
| 5811 4TH ST N | St. Petersburg | Single Building Store | \$3,050,000 | 9,088 | 1997 | \$62,747 |
| 605 S PINELLAS AVE | Tarpon Springs | Single Building Store | \$3,025,000 | 14,440 | 2001 | \$58,395 |
| 6735 CENTRAL AVE | St. Petersburg | Single Building Store | \$3,020,000 | 13,436 | 1995 | \$60,157 |
| 8901 US HIGHWAY 19 N | Pinellas Park | Single Building Store | \$3,000,000 | 46,808 | 1971 | \$65,261 |
| 5 PATRICIA AVE | Dunedin | Single Building Store | \$2,990,000 | 14,736 | 2006 | \$54,125 |
| 10195 66TH ST | Pinellas Park | Single Building Store | \$2,960,000 | 15,508 | 2005 | \$62,533 |
| 5701 GULFPORT BLVD S | Gulfport | Single Building Store | \$2,960,000 | 14,661 | 1996 | \$51,779 |
| 8275 BAY PINES BLVD | Seminole | Single Building Store | \$2,950,000 | 15,069 | 2011 | \$47,441 |
| 7400 49TH ST | Pinellas Park | Single Building Store | \$2,945,000 | 15,354 | 2008 | \$62,218 |
| 1000 E TARPON AVE | Tarpon Springs | Single Building Store | \$2,905,000 | 15,362 | 2007 | \$55,005 |
| 3535 4TH ST N | St. Petersburg | Single Building Store | \$2,900,000 | 14,080 | 1977 | \$61,552 |
| 1605 S MISSOURI AVE | Clearwater | Single Building Store | \$2,890,000 | 14,764 | 2000 | \$51,075 |
| 30387 US HIGHWAY 19 N | Clearwater | Single Building Store | \$2,875,000 | 14,968 | 1998 | \$50,091 |
| 33550 US HIGHWAY 19 N | Palm Harbor | Single Building Store | \$2,850,000 | 19,840 | 1999 | \$53,256 |
| 3501 54TH AVE S | St. Petersburg | Single Building Store | \$2,850,000 | 14,094 | 1999 | \$56,771 |
| 5400 4TH ST N | St. Petersburg | Single Building Store | \$2,840,000 | 11,760 | 1998 | \$56,572 |
| 4401 GULF BLVD | St. Pete Beach | Single Building Store | \$2,830,000 | 13,020 | 2000 | \$45,349 |
| 1899 N HIGHLAND AVE | Clearwater | Single Building Store | \$2,775,000 | 15,360 | 2008 | \$54,573 |
| 2495 SANDY POINT RD | Palm Harbor | Single Building Store | \$2,755,000 | 12,526 | 2010 | \$50,094 |
| 2300 STATE ROAD 580 | Clearwater | Single Building Store | \$2,750,000 | 17,700 | 2023 | \$59,690 |

| Address | City | Type | Market Value | Sq Ft | Year | Annual Tax |
|----------------------------------|--------------------|-----------------------|--------------|--------|------|------------|
| 3950 EAST BAY DR | Largo | Single Building Store | \$2,655,000 | 13,386 | 2011 | \$52,974 |
| 6705 GULF BLVD | St. Pete Beach | Single Building Store | \$2,625,000 | 10,226 | 1990 | \$42,737 |
| 30990 US HIGHWAY 19 N | Palm Harbor | Single Building Store | \$2,610,000 | 13,584 | 1980 | \$47,118 |
| 8010 US HIGHWAY 19 N | Pinellas Park | Single Building Store | \$2,600,000 | 38,850 | 1971 | \$56,657 |
| 3790 TAMPA RD | Oldsmar | Single Building Store | \$2,590,000 | 23,508 | 1984 | \$45,895 |
| 2100 66TH ST N | St. Petersburg | Single Building Store | \$2,530,000 | 11,922 | 1997 | \$50,397 |
| 2390 EAST BAY DR | Largo | Single Building Store | \$2,520,000 | 12,040 | 1999 | \$47,848 |
| 7405 STARKEY RD | Seminole | Single Building Store | \$2,495,000 | 11,782 | 1997 | \$40,265 |
| 353 GULF BLVD | Indian Rocks Beach | Single Building Store | \$2,490,000 | 11,957 | 1984 | \$40,223 |
| 5345 66TH ST N | St. Petersburg | Single Building Store | \$2,465,000 | 12,240 | 1998 | \$57,529 |
| 10200 SEMINOLE BLVD | Seminole | Single Building Store | \$2,465,000 | 12,091 | 2000 | \$39,866 |
| 8001 DR MARTIN LUTHER KING JR ST | St. Petersburg | Single Building Store | \$2,465,000 | 11,200 | 1998 | \$49,600 |
| 2390 BELCHER RD S | Largo | Single Building Store | \$2,465,000 | 12,040 | 1999 | \$46,803 |
| 1 S MISSOURI AVE | Clearwater | Single Building Store | \$2,465,000 | 12,096 | 1999 | \$50,704 |
| 3771 TAMPA RD | Oldsmar | Single Building Store | \$2,465,000 | 11,584 | 1997 | \$43,793 |
| 7850 131ST ST | Seminole | Single Building Store | \$2,450,000 | 12,745 | 2003 | \$44,895 |
| 5405 49TH ST N | St. Petersburg | Single Building Store | \$2,440,000 | 12,272 | 2002 | \$56,612 |
| 7101 PARK BLVD | Pinellas Park | Single Building Store | \$2,440,000 | 12,351 | 2001 | \$53,510 |
| 13998 WALSINGHAM RD | Largo | Single Building Store | \$2,430,000 | 11,590 | 1998 | \$46,709 |
| 2200 34TH ST N | St. Petersburg | Single Building Store | \$2,420,000 | 12,436 | 2001 | \$48,206 |
| 2945 GULF TO BAY BLVD | Clearwater | Single Building Store | \$2,420,000 | 35,936 | 1962 | \$49,929 |
| 2175 MAIN ST | Dunedin | Single Building Store | \$2,420,000 | 12,452 | 2003 | \$42,948 |
| 2218 GULF TO BAY BLVD | Clearwater | Single Building Store | \$2,415,000 | 12,431 | 2001 | \$47,026 |
| 4901 CENTRAL AVE | St. Petersburg | Single Building Store | \$2,395,000 | 10,960 | 1999 | \$47,708 |
| 4000 EAST BAY DR | Largo | Single Building Store | \$2,390,000 | 12,113 | 2002 | \$45,664 |

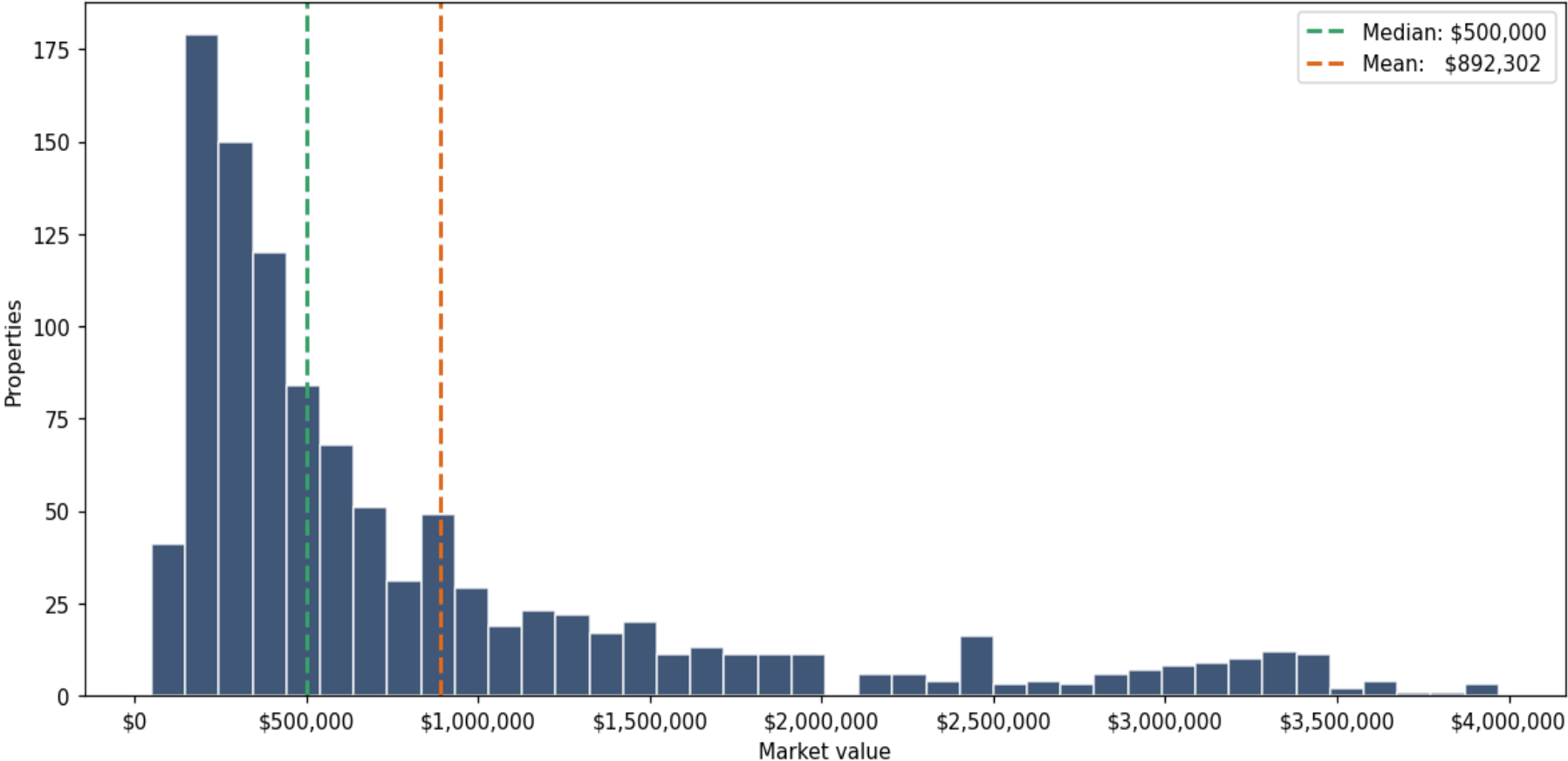
| Address | City | Type | Market Value | Sq Ft | Year | Annual Tax |
|----------------------------------|----------------|-----------------------|--------------|--------|------|------------|
| 51 MISSOURI AVE N | Largo | Single Building Store | \$2,390,000 | 12,468 | 2002 | \$46,044 |
| 4560 EAST BAY DR | Largo | Single Building Store | \$2,325,000 | 12,592 | 2021 | \$45,000 |
| 1756 N MISSOURI AVE | Largo | Single Building Store | \$2,275,000 | 10,260 | 2022 | \$45,474 |
| 975 TAMPA RD | Palm Harbor | Single Building Store | \$2,270,000 | 12,298 | 2001 | \$43,056 |
| 5297 GULF BLVD | St. Pete Beach | Single Building Store | \$2,260,000 | 10,395 | 1991 | \$36,247 |
| 130 FOUNTAIN PKWY N | St. Petersburg | Single Building Store | \$2,250,000 | 5,241 | 2005 | \$45,317 |
| 103 INDIAN ROCKS RD S | Largo | Single Building Store | \$2,215,000 | 15,100 | 2003 | \$42,057 |
| 2436 GULF TO BAY BLVD | Clearwater | Single Building Store | \$2,210,000 | 15,376 | 1989 | \$43,252 |
| 1721 GULF TO BAY BLVD | Clearwater | Single Building Store | \$2,200,000 | 22,176 | 1995 | \$45,961 |
| 27205 US HIGHWAY 19 N | Clearwater | Single Building Store | \$2,195,000 | 12,390 | 1991 | \$38,243 |
| 1601 34TH ST N | St. Petersburg | Single Building Store | \$2,170,000 | 27,349 | 1970 | \$43,226 |
| 5801 CENTRAL AVE | St. Petersburg | Single Building Store | \$2,140,000 | 12,743 | 2003 | \$42,628 |
| 1352 MAIN ST | Dunedin | Single Building Store | \$2,125,000 | 2,450 | 1979 | \$37,404 |
| 2855 66TH ST N | St. Petersburg | Single Building Store | \$2,125,000 | 10,062 | 1970 | \$42,329 |
| 415 MANDALAY AVE | Clearwater | Single Building Store | \$2,000,000 | 5,050 | 1955 | \$39,188 |
| 35098 US HIGHWAY 19 N | Palm Harbor | Single Building Store | \$2,000,000 | 5,072 | 1984 | \$38,092 |
| 3401 CENTRAL AVE | St. Petersburg | Single Building Store | \$1,985,000 | 12,050 | 1994 | \$39,541 |
| 3947 TAMPA RD | Oldsmar | Single Building Store | \$1,970,000 | 9,375 | 2018 | \$35,385 |
| 31650 US HIGHWAY 19 N | Palm Harbor | Single Building Store | \$1,970,000 | 8,000 | 1988 | \$35,564 |
| 4315 EAST BAY DR | Largo | Single Building Store | \$1,950,000 | 18,881 | 1985 | \$44,620 |
| 13055 STARKEY RD | Largo | Single Building Store | \$1,950,000 | 16,420 | 1972 | \$39,873 |
| 1101 1ST AVE N | St. Petersburg | Single Building Store | \$1,940,000 | 4,326 | 1954 | \$38,644 |
| 6398 DR MARTIN LUTHER KING JR ST | St. Petersburg | Single Building Store | \$1,930,000 | 7,542 | 2019 | \$39,043 |
| 9301 66TH ST | Pinellas Park | Single Building Store | \$1,925,000 | 12,440 | 2012 | \$41,968 |
| 100 CLEARWATER-LARGO RD N | Largo | Single Building Store | \$1,925,000 | 11,360 | 1997 | \$37,974 |

| Address | City | Type | Market Value | Sq Ft | Year | Annual Tax |
|-------------------------|----------------|-----------------------|--------------|--------|------|------------|
| 2881 GULF TO BAY BLVD | Clearwater | Single Building Store | \$1,910,000 | 9,120 | 1989 | \$37,543 |
| 10890 PARK BLVD | Seminole | Single Building Store | \$1,910,000 | 7,424 | 2011 | \$32,371 |
| 35065 US HIGHWAY 19 N | Palm Harbor | Single Building Store | \$1,900,000 | 15,376 | 1990 | \$36,106 |
| 7330 PARK BLVD | Pinellas Park | Single Building Store | \$1,855,000 | 10,080 | 2021 | \$39,345 |
| 8490 PARK BLVD | Seminole | Single Building Store | \$1,850,000 | 6,960 | 2000 | \$29,581 |
| 12850 VILLAGE BLVD | Madeira Beach | Single Building Store | \$1,845,000 | 7,174 | 2004 | \$30,651 |
| 30209 US HIGHWAY 19 N | Clearwater | Single Building Store | \$1,845,000 | 12,000 | 1974 | \$32,145 |
| 3800 ULMERTON RD | Clearwater | Single Building Store | \$1,840,000 | 9,744 | 1982 | \$37,623 |
| 6950 SEMINOLE BLVD | Seminole | Single Building Store | \$1,835,000 | 11,913 | 1971 | \$29,262 |
| 1420 MAIN ST | Dunedin | Single Building Store | \$1,825,000 | 8,320 | 2012 | \$32,211 |
| 2240 62ND AVE S | St. Petersburg | Single Building Store | \$1,815,000 | 12,552 | 2012 | \$36,154 |
| 1350 WEST BAY DR | Largo | Single Building Store | \$1,800,000 | 13,503 | 2002 | \$36,835 |
| 29450 US HIGHWAY 19 N | Clearwater | Single Building Store | \$1,790,000 | 12,555 | 2006 | \$31,894 |
| 1326 SAN CHRISTOPHER DR | Dunedin | Single Building Store | \$1,785,000 | 9,444 | 2013 | \$32,563 |
| 641 MISSOURI AVE N | Largo | Single Building Store | \$1,775,000 | 18,375 | 1960 | \$33,702 |
| 1260 BELCHER RD | Dunedin | Single Building Store | \$1,775,000 | 9,636 | 2013 | \$32,739 |
| 1600 4TH ST N | St. Petersburg | Single Building Store | \$1,772,000 | 9,188 | 1948 | \$37,668 |
| 6666 22ND AVE N | St. Petersburg | Single Building Store | \$1,765,000 | 6,960 | 1997 | \$35,158 |
| 13015 SEMINOLE BLVD | Largo | Single Building Store | \$1,755,000 | 15,929 | 1992 | \$36,550 |
| 1724 GULF TO BAY BLVD | Clearwater | Single Building Store | \$1,750,000 | 4,034 | 1965 | \$33,866 |
| 256 2ND ST N | St. Petersburg | Single Building Store | \$1,745,000 | 7,794 | 1937 | \$34,919 |
| 2598 4TH ST N | St. Petersburg | Single Building Store | \$1,730,000 | 6,630 | 1997 | \$35,855 |
| 760 ALT 19 | Palm Harbor | Single Building Store | \$1,710,000 | 8,320 | 2013 | \$32,947 |
| 4596 PARK BLVD | Pinellas Park | Single Building Store | \$1,710,000 | 7,360 | 2020 | \$36,513 |
| 40767 US HIGHWAY 19 N | Tarpon Springs | Single Building Store | \$1,700,000 | 12,000 | 2014 | \$37,203 |

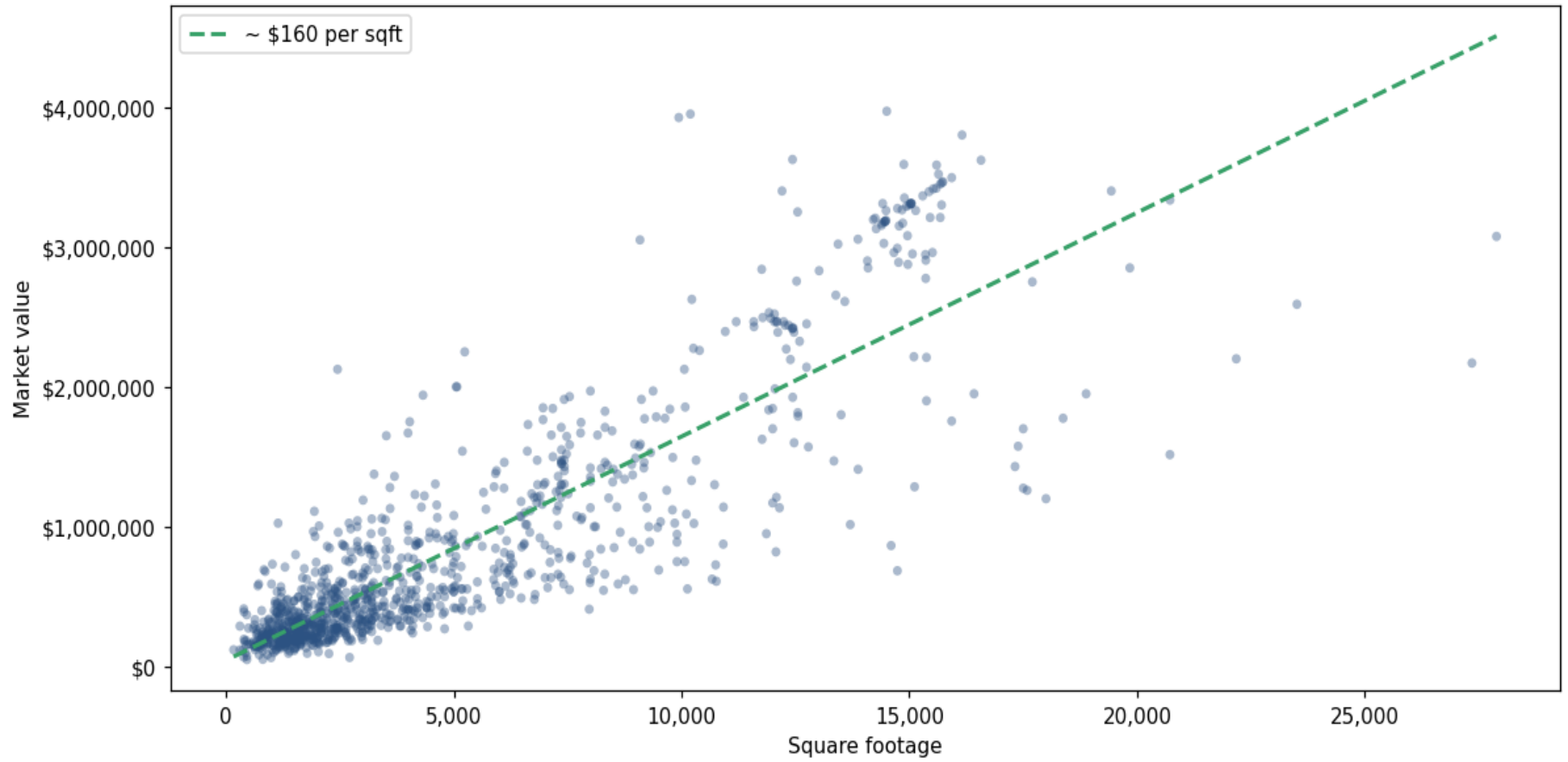
| Address | City | Type | Market Value | Sq Ft | Year | Annual Tax |
|----------------------------------|----------------|-----------------------|--------------|--------|------|------------|
| 2200 DR MARTIN LUTHER KING JR ST | St. Petersburg | Single Building Store | \$1,700,000 | 17,500 | 1998 | \$33,863 |
| 12880 49TH ST N | Pinellas Park | Single Building Store | \$1,685,000 | 8,476 | 2020 | \$32,882 |
| 700 S GULFVIEW BLVD | Clearwater | Single Building Store | \$1,670,000 | 7,784 | 2004 | \$33,092 |
| 2801 4TH ST N | St. Petersburg | Single Building Store | \$1,670,000 | 3,996 | 2024 | \$33,863 |
| 705 8TH AVE SW | Largo | Single Building Store | \$1,655,000 | 8,156 | 2013 | \$32,278 |
| 23055 US HIGHWAY 19 N | Clearwater | Single Building Store | \$1,655,000 | 7,142 | 2009 | \$32,705 |
| 2650 EAST BAY DR | Largo | Single Building Store | \$1,650,000 | 3,520 | 2011 | \$31,329 |
| 311 MISSOURI AVE N | Largo | Single Building Store | \$1,650,000 | 32,000 | 1980 | \$32,278 |
| 3350 3RD AVE S | St. Petersburg | Single Building Store | \$1,645,000 | 7,479 | 2013 | \$33,366 |
| 30512 US HIGHWAY 19 N | Palm Harbor | Single Building Store | \$1,625,000 | 11,768 | 1984 | \$29,336 |
| 31541 US HIGHWAY 19 N | Palm Harbor | Single Building Store | \$1,600,000 | 12,471 | 1985 | \$28,885 |
| 12500 SEMINOLE BLVD | Largo | Single Building Store | \$1,590,000 | 9,100 | 2013 | \$32,278 |
| 2143 TYRONE BLVD N | St. Petersburg | Single Building Store | \$1,590,000 | 8,970 | 1986 | \$31,672 |
| 3923 TAMPA RD | Oldsmar | Single Building Store | \$1,585,000 | 7,544 | 2017 | \$28,203 |
| 43380 US HIGHWAY 19 N | Tarpon Springs | Single Building Store | \$1,575,000 | 17,388 | 1968 | \$30,140 |
| 2351 101ST ST N | Largo | Single Building Store | \$1,575,000 | 9,068 | 1999 | \$29,514 |
| 1980 MAIN ST | Dunedin | Single Building Store | \$1,570,000 | 12,784 | 2001 | \$28,339 |
| 2355 GULF TO BAY BLVD | Clearwater | Single Building Store | \$1,550,000 | 7,364 | 2013 | \$30,964 |
| 15327 GULF BLVD | Madeira Beach | Single Building Store | \$1,540,000 | 6,615 | 2004 | \$25,704 |
| 4870 PARK ST N | Seminole | Single Building Store | \$1,540,000 | 5,190 | 2008 | \$24,558 |
| 8651 ULMERTON RD | Largo | Single Building Store | \$1,530,000 | 9,323 | 2013 | \$30,854 |
| 3698 TAMPA RD | Oldsmar | Single Building Store | \$1,520,000 | 7,475 | 2011 | \$27,152 |
| 11425 66TH ST | Pinellas Park | Single Building Store | \$1,515,000 | 20,720 | 1972 | \$32,404 |
| 1728 S MISSOURI AVE | Clearwater | Single Building Store | \$1,500,000 | 7,176 | 2019 | \$27,835 |
| 2216 18TH AVE S | St. Petersburg | Single Building Store | \$1,495,000 | 9,808 | 2011 | \$30,378 |

| Address | City | Type | Market Value | Sq Ft | Year | Annual Tax |
|-----------------------|----------------|-----------------------|--------------|--------|------|------------|
| 4900 17TH AVE S | Gulfport | Single Building Store | \$1,490,000 | 8,988 | 2014 | \$26,065 |
| 10135 ULMERTON RD | Largo | Single Building Store | \$1,475,000 | 7,360 | 2020 | \$29,240 |
| 6651 ULMERTON RD | Largo | Single Building Store | \$1,475,000 | 7,424 | 2018 | \$28,291 |
| 3050 22ND AVE N | St. Petersburg | Single Building Store | \$1,475,000 | 6,831 | 2014 | \$29,382 |
| 3163 CENTRAL AVE | St. Petersburg | Single Building Store | \$1,475,000 | 10,319 | 1963 | \$29,382 |
| 450 34TH ST N | St. Petersburg | Single Building Store | \$1,470,000 | 13,344 | 1970 | \$29,282 |
| 2430 GULF TO BAY BLVD | Clearwater | Single Building Store | \$1,465,000 | 7,360 | 2015 | \$28,641 |
| 5701 54TH AVE N | Kenneth City | Single Building Store | \$1,460,000 | 9,180 | 2016 | \$30,062 |
| 5235 GULF BLVD | St. Pete Beach | Single Building Store | \$1,460,000 | 6,109 | 1995 | \$23,584 |
| 1200 N MYRTLE AVE | Clearwater | Single Building Store | \$1,460,000 | 8,320 | 2014 | \$29,028 |
| 4030 66TH ST N | St. Petersburg | Single Building Store | \$1,450,000 | 7,360 | 2016 | \$31,053 |
| 1433 MAIN ST | Dunedin | Single Building Store | \$1,450,000 | 7,372 | 2013 | \$26,667 |

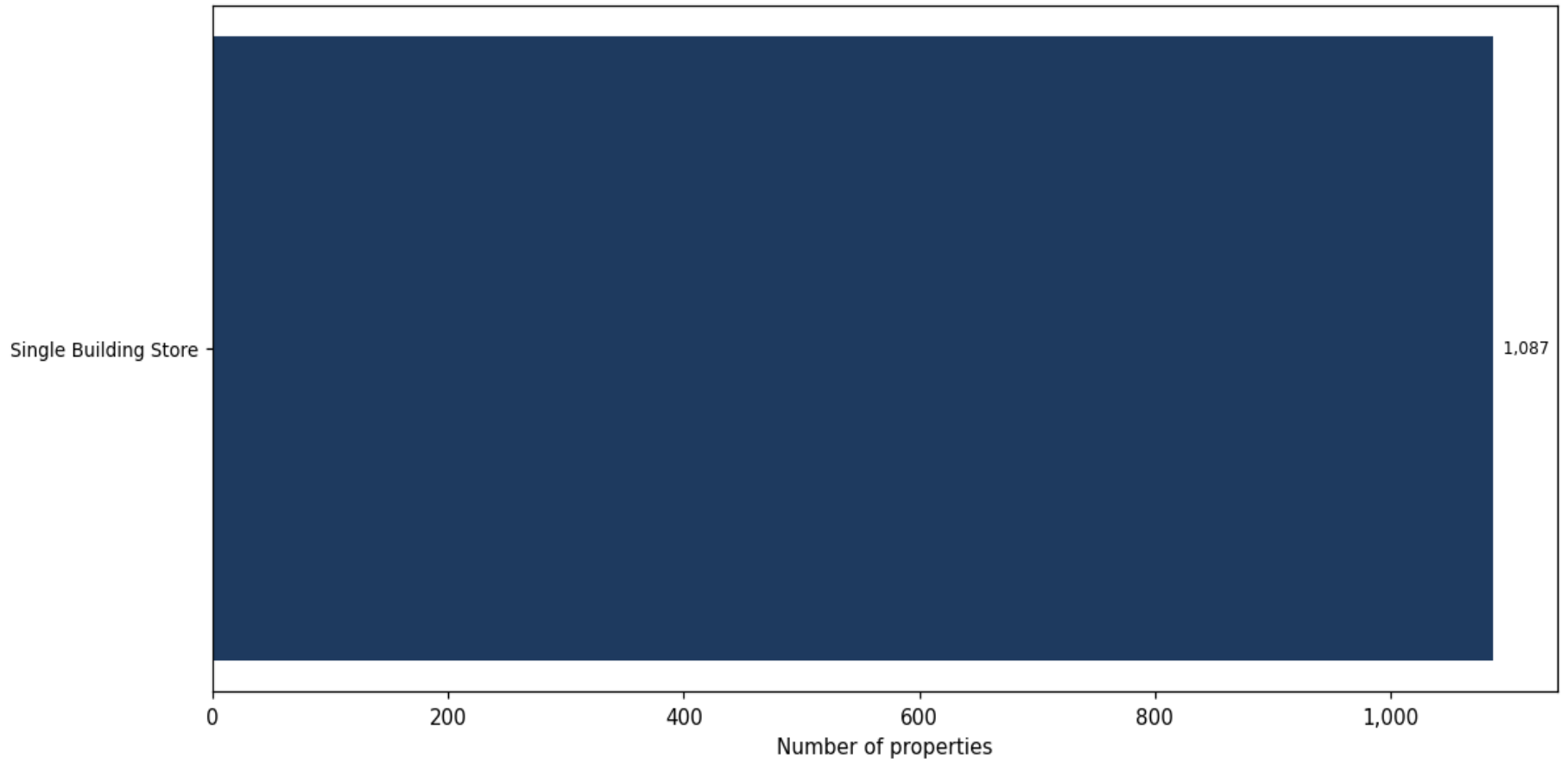
Market value distribution (n=1,087, top 1% trimmed for readability)



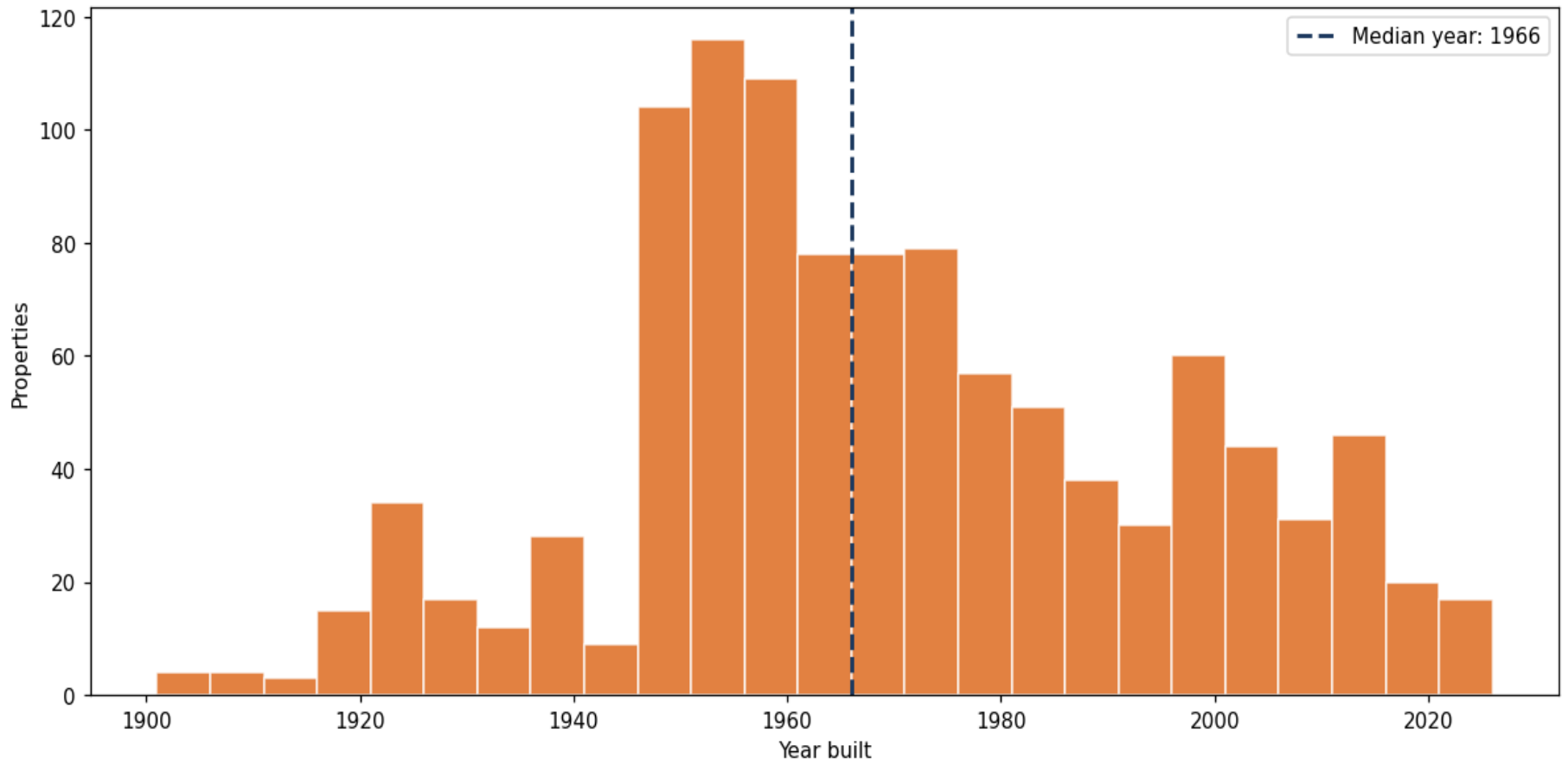
Building size vs. market value (n=1,065, outliers trimmed)



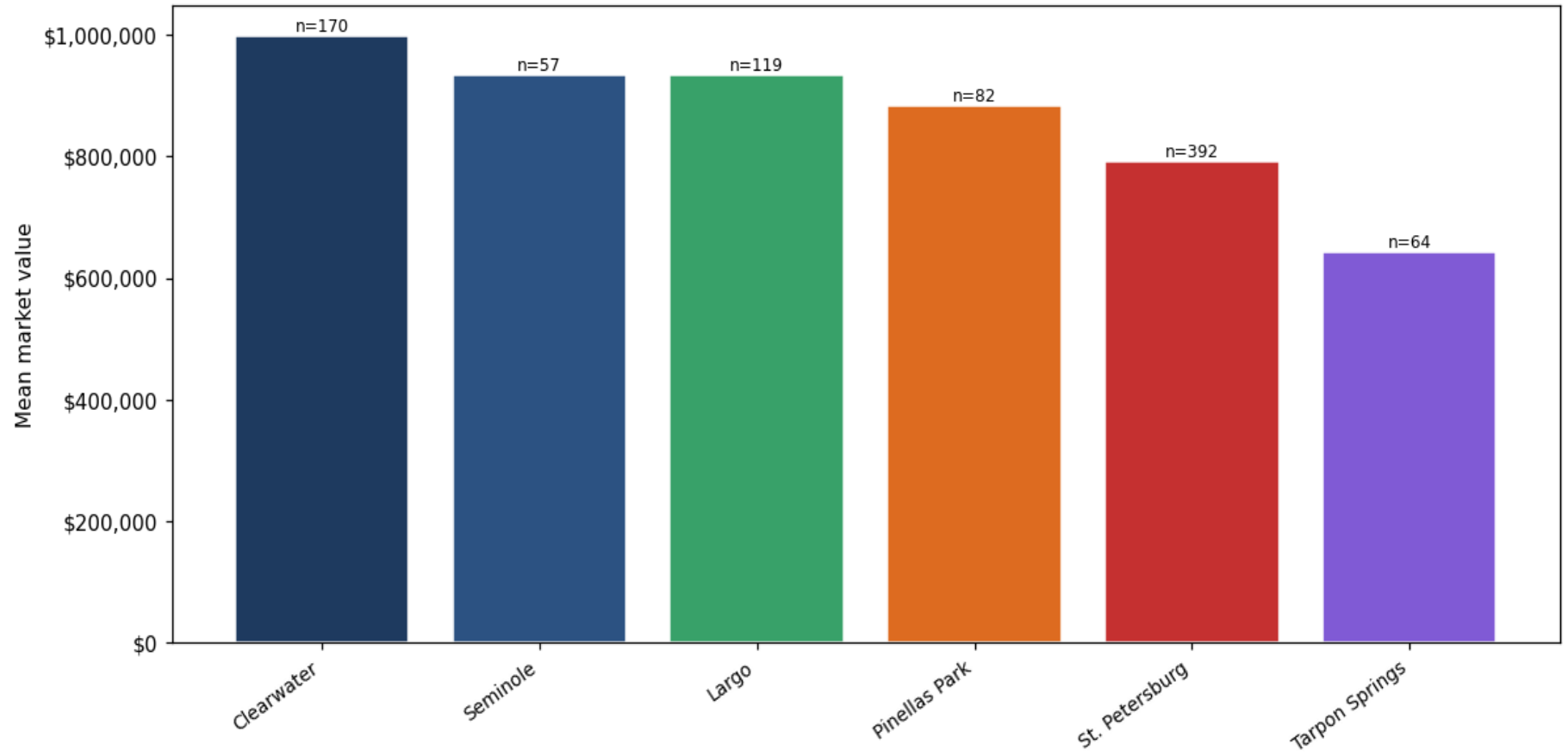
Top property types by count



Year built distribution (5-year buckets)



Mean market value by city (cities with ≥ 50 matches)



Market value vs. assessed value (gap = untaxed appreciation)

