

Pinellas Property Market Report

186 matching properties • May 30, 2026

Filters applied	Headline numbers
Property type: Private Schools	Properties matched: 186
	Median market value: \$610,000
	Mean market value: \$2,876,912
	Min / Max: \$62,500 / \$86,500,000
	Mean square footage: 18,937

Top 186 properties by market value

Address	City	Type	Market Value	Sq Ft	Year	Annual Tax
4200 54TH AVE S	St. Petersburg	Private Schools & Colleg	\$86,500,000	457,071	1963	\$1,774,845
3400 GULF TO BAY BLVD	Clearwater	Private Schools & Colleg	\$84,931,623	563,328	2019	\$1,673,659
5101 1ST ST NE	St. Petersburg	Private Schools & Colleg	\$43,832,213	240,113	2004	\$767,239
501 PARK ST N	St. Petersburg	Private Schools & Colleg	\$24,406,877	155,294	1956	\$488,302
1401 61ST ST S	Gulfport	Private Schools & Colleg	\$13,750,000	113,314	1925	\$245,587
990 62ND AVE NE	St. Petersburg	Private Schools & Colleg	\$12,885,265	78,994	1985	\$235,591
10101 54TH AVE N	Seminole	Private Schools & Colleg	\$12,150,000	127,764		\$200,129
2045 PALMETTO ST	Clearwater	Private Schools & Colleg	\$11,335,403	58,244	2014	\$215,852
9200 49TH ST	Pinellas Park	Private Schools & Colleg	\$11,174,972	52,562	1958	\$214,914
10200 DR MARTIN LUTHER KING JR S	St. Petersburg	Private Schools & Colleg	\$11,100,000	101,472	1988	\$229,077
1400 61ST ST S	Gulfport	Private Schools & Colleg	\$10,995,633	57,314	1998	\$195,051
801 3RD ST S	St. Petersburg	Private Schools & Colleg	\$9,300,000	49,688	1985	\$194,217
1775 S HIGHLAND AVE	Largo	Private Schools & Colleg	\$9,287,810	55,803	1968	\$176,875

Address	City	Type	Market Value	Sq Ft	Year	Annual Tax
2433 NURSERY RD	Clearwater	Private Schools & Colleg	\$7,150,000	53,289	1986	\$142,529
1005 S HIGHLAND AVE	Clearwater	Private Schools & Colleg	\$6,000,000	56,749	1966	\$119,597
870 4TH ST S	St. Petersburg	Private Schools & Colleg	\$5,879,740	10,790	1960	\$130,178
833 WYATT ST	Largo	Private Schools & Colleg	\$5,245,300	35,368	1956	\$77,526
2220 62ND AVE S	St. Petersburg	Private Schools & Colleg	\$4,993,501	20,192	2020	\$95,318
2301 22ND AVE S	St. Petersburg	Private Schools & Colleg	\$4,909,753	23,145	1998	\$93,890
101 PHILIPPE PKWY	Safety Harbor	Private Schools & Colleg	\$4,550,000	31,920	1926	\$87,086
28272 US HIGHWAY 19 N	Clearwater	Private Schools & Colleg	\$4,200,000	30,152	1981	\$77,686
251 LYNDHURST ST	Dunedin	Private Schools & Colleg	\$4,150,577	20,911	1967	\$74,536
1060 KEENE RD	Dunedin	Private Schools & Colleg	\$4,050,000	27,968	1999	\$73,927
3600 FAIRFIELD AVE S	St. Petersburg	Private Schools & Colleg	\$4,000,811	23,484	2003	\$72,964
3986 TAMPA RD	Oldsmar	Private Schools & Colleg	\$4,000,000	39,114	2002	\$74,448
1845 DREW ST	Clearwater	Private Schools & Colleg	\$3,525,000	46,360	1968	\$70,636
2811 BELCHER RD	Dunedin	Private Schools & Colleg	\$3,375,000	14,220	2009	\$62,363
2355 NEBRASKA AVE	Palm Harbor	Private Schools & Colleg	\$3,225,000	17,222	1972	\$60,658
11225 US HIGHWAY 19 N	Pinellas Park	Private Schools & Colleg	\$3,225,000	29,994	1969	\$64,521
3760 TAMPA RD	Oldsmar	Private Schools & Colleg	\$3,050,000	14,080	2021	\$55,617
801 DREW ST	Clearwater	Private Schools & Colleg	\$2,850,000	18,405	1998	\$60,255
2801 KEYSTONE RD	Tarpon Springs	Private Schools & Colleg	\$2,700,000	22,692	2006	\$51,177
3090 SUNSET POINT RD	Clearwater	Private Schools & Colleg	\$2,675,000	11,962	1989	\$48,958
2669 MCMULLEN BOOTH RD	Safety Harbor	Private Schools & Colleg	\$2,415,000	17,054	1995	\$48,071
13455 US HIGHWAY 19 N	Clearwater	Private Schools & Colleg	\$2,300,000	30,712	1960	\$42,670
11499 131ST ST # A	Largo	Private Schools & Colleg	\$2,250,000	16,162	1985	\$44,905
62ND AVE N	Pinellas Park	Private Schools & Colleg	\$2,245,567	1,800	1980	\$48,427
6225 ULMERTON RD	Clearwater	Private Schools & Colleg	\$2,150,000	31,342	1960	\$39,826

Address	City	Type	Market Value	Sq Ft	Year	Annual Tax
3933 TAMPA RD	Oldsmar	Private Schools & Colleg	\$2,100,000	10,950	2011	\$40,552
800 6TH AVE S	St. Petersburg	Private Schools & Colleg	\$2,000,000	9,450	1989	\$41,831
7970 STARKEY RD	Seminole	Private Schools & Colleg	\$1,945,000	8,813	2019	\$34,126
2495 ENTERPRISE RD	Clearwater	Private Schools & Colleg	\$1,945,000	15,148	1985	\$38,995
2060 NEBRASKA AVE	Palm Harbor	Private Schools & Colleg	\$1,930,000	15,685	1982	\$36,377
3270 EAST BAY DR	Largo	Private Schools & Colleg	\$1,900,000	7,619	1971	\$37,690
9259 PARK BLVD	Seminole	Private Schools & Colleg	\$1,850,000	9,339	1979	\$30,777
11650 131ST ST N	Largo	Private Schools & Colleg	\$1,789,582	18,934	1968	\$30,282
9270 RIDGE RD	Seminole	Private Schools & Colleg	\$1,708,714	8,190	1960	\$24,861
942 19TH ST S	St. Petersburg	Private Schools & Colleg	\$1,685,000	18,055	1980	\$35,258
1700 MICHIGAN BLVD	Dunedin	Private Schools & Colleg	\$1,685,000	10,200	1998	\$30,979
113 FOREST LAKES BLVD S	Oldsmar	Private Schools & Colleg	\$1,625,000	5,900	1986	\$29,867
1220 EAST LAKE RD S	Tarpon Springs	Private Schools & Colleg	\$1,615,000	11,177	1997	\$30,417
2632 54TH ST S	Gulfport	Private Schools & Colleg	\$1,610,674	9,446	1963	\$28,953
3245 EXECUTIVE DR	St. Petersburg	Private Schools & Colleg	\$1,595,000	6,254	1988	\$42,827
908 CLEVELAND ST	Clearwater	Private Schools & Colleg	\$1,500,000	9,465	1990	\$32,007
7633 131ST ST	Seminole	Private Schools & Colleg	\$1,350,000	8,610	1998	\$25,797
13348 US HIGHWAY 19 N	Clearwater	Private Schools & Colleg	\$1,320,000	8,684	2006	\$24,477
1411 N FT HARRISON AVE	Clearwater	Private Schools & Colleg	\$1,309,247	7,026	1923	\$24,289
13233 102ND AVE N	Largo	Private Schools & Colleg	\$1,300,000	9,413	1974	\$23,253
700 PARK ST N	St. Petersburg	Private Schools & Colleg	\$1,289,031	1,440	1928	\$27,069
16120 BAY VISTA DR	Largo	Private Schools & Colleg	\$1,170,000	9,416	1988	\$28,006
2177 NE COACHMAN RD	Clearwater	Private Schools & Colleg	\$1,165,000	10,990	1959	\$23,610
2250 62ND AVE S	St. Petersburg	Private Schools & Colleg	\$1,160,000	8,478	1981	\$23,904
557 CLEARWATER-LARGO RD N	Largo	Private Schools & Colleg	\$1,085,000	12,152	1960	\$21,361

Address	City	Type	Market Value	Sq Ft	Year	Annual Tax
1408 COUNTY ROAD 1	Dunedin	Private Schools & Colleg	\$1,050,000	7,749	1927	\$19,450
3590 32ND ST S	St. Petersburg	Private Schools & Colleg	\$1,025,000	8,671	1986	\$21,414
4970 82ND AVE N	Pinellas Park	Private Schools & Colleg	\$1,025,000	10,367	1985	\$22,558
4811 CYPRESS WOODS BLVD	Palm Harbor	Private Schools & Colleg	\$1,000,000	8,423	1995	\$18,955
1749 E LAKE RD S	Tarpon Springs	Private Schools & Colleg	\$1,000,000	7,708	1970	\$18,955
1930 4TH ST S	St. Petersburg	Private Schools & Colleg	\$970,000	6,576	2008	\$20,019
6630 78TH AVE N	Pinellas Park	Private Schools & Colleg	\$960,000	7,024	2012	\$20,984
1857 CURLEW RD	Palm Harbor	Private Schools & Colleg	\$930,000	7,607	1986	\$17,421
1410 E LAKE RD N	Tarpon Springs	Private Schools & Colleg	\$925,000	7,123	1998	\$17,510
1123 OVERCASH DR	Dunedin	Private Schools & Colleg	\$905,000	5,850	1996	\$16,546
802 TURNER ST	Clearwater	Private Schools & Colleg	\$900,000	5,494	1988	\$18,288
701 N MISSOURI AVE	Clearwater	Private Schools & Colleg	\$888,508	7,980	2024	\$17,804
1019 E LEMON ST	Tarpon Springs	Private Schools & Colleg	\$885,000	5,642	1997	\$17,519
1619 11TH AVE N	St. Petersburg	Private Schools & Colleg	\$880,000	3,618	1973	\$20,418
2100 62ND AVE N	St. Petersburg	Private Schools & Colleg	\$875,000	5,310	1965	\$19,263
6405 46TH AVE N	Kenneth City	Private Schools & Colleg	\$870,000	5,148	1947	\$19,158
690 CARILLON PKWY	St. Petersburg	Private Schools & Colleg	\$850,000	4,584	1987	\$17,529
1224 7TH ST S	Safety Harbor	Private Schools & Colleg	\$850,000	4,052	1987	\$15,414
1990 MAIN ST	Dunedin	Private Schools & Colleg	\$810,000	5,800	1986	\$14,785
10830 NAVAJO DR	St. Petersburg	Private Schools & Colleg	\$810,000	7,056	1968	\$15,175
1900 12TH ST S	St. Petersburg	Private Schools & Colleg	\$800,000	30,482	1950	\$16,832
1112 LAKEVIEW RD	Clearwater	Private Schools & Colleg	\$800,000	5,000	1986	\$16,159
3350 ALT 19	Palm Harbor	Private Schools & Colleg	\$745,000	3,482	1986	\$13,991
6520 102ND AVE	Pinellas Park	Private Schools & Colleg	\$740,000	4,990	1984	\$16,368
2122 N HERCULES AVE	Clearwater	Private Schools & Colleg	\$695,000	7,452	1934	\$12,544

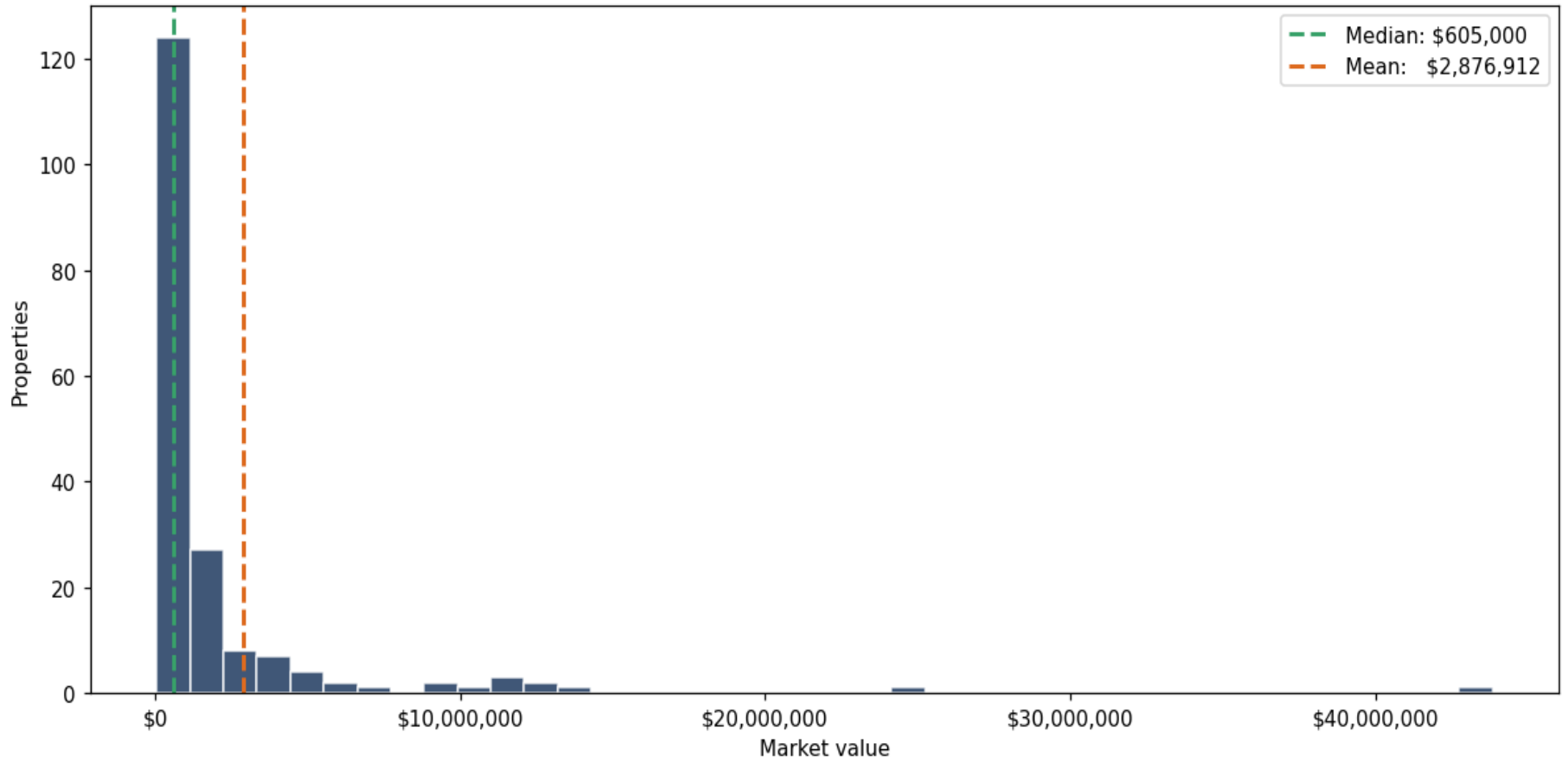
Address	City	Type	Market Value	Sq Ft	Year	Annual Tax
1880 N MCMULLEN BOOTH RD	Clearwater	Private Schools & Colleg	\$695,000	4,495	1981	\$14,127
438 62ND AVE N	St. Petersburg	Private Schools & Colleg	\$670,000	5,614	1970	\$13,944
6710 86TH AVE	Pinellas Park	Private Schools & Colleg	\$630,000	6,000	1973	\$13,850
2355 28TH ST S	St. Petersburg	Private Schools & Colleg	\$630,000	5,925	1955	\$13,147
1633 N BELCHER RD	Clearwater	Private Schools & Colleg	\$610,000	5,328	1963	\$11,222
6030 1ST ST N	St. Petersburg	Private Schools & Colleg	\$600,000	4,968	1974	\$12,549
1419 SUNSET POINT RD	Clearwater	Private Schools & Colleg	\$595,000	4,688	1986	\$14,030
5690 ROOSEVELT BLVD	Largo	Private Schools & Colleg	\$585,000	5,760	1986	\$11,582
130 RIVIERE RD	Palm Harbor	Private Schools & Colleg	\$585,000	5,442	1983	\$11,012
1807 S HIGHLAND AVE	Largo	Private Schools & Colleg	\$576,875	4,320	1955	\$11,629
1375 BELCHER RD S	Largo	Private Schools & Colleg	\$575,000	4,258	1976	\$11,487
618 94TH AVE N	St. Petersburg	Private Schools & Colleg	\$570,000	5,425	1980	\$11,852
3449 13TH AVE N	St. Petersburg	Private Schools & Colleg	\$560,000	4,412	1964	\$11,753
3130 N MCMULLEN BOOTH RD	Clearwater	Private Schools & Colleg	\$552,500	5,005	1965	\$11,128
14088 ICOT BLVD	Largo	Private Schools & Colleg	\$550,000	7,136	1986	\$10,918
6751 ULMERTON RD	Largo	Private Schools & Colleg	\$545,000	4,916	1959	\$10,074
516 S HUEY AVE	Tarpon Springs	Private Schools & Colleg	\$545,000	3,680	1981	\$10,737
6001 PARK BLVD	Pinellas Park	Private Schools & Colleg	\$535,000	3,515	1947	\$11,751
2644 STATE ROAD 590	Clearwater	Private Schools & Colleg	\$532,500	4,862	1980	\$9,757
2109 NEBRASKA AVE	Palm Harbor	Private Schools & Colleg	\$530,000	2,522	1959	\$10,019
12240 SEMINOLE BLVD	Seminole	Private Schools & Colleg	\$510,000	4,005	1974	\$9,455
6427 54TH AVE N	St. Petersburg	Private Schools & Colleg	\$505,000	8,550	1973	\$12,147
241 OMAHA ST	Palm Harbor	Private Schools & Colleg	\$500,000	3,482	1986	\$9,478
1370 MICHIGAN BLVD	Dunedin	Private Schools & Colleg	\$500,000	2,694	2010	\$9,241
9110 102ND AVE	Seminole	Private Schools & Colleg	\$500,000	4,974	1974	\$9,504

Address	City	Type	Market Value	Sq Ft	Year	Annual Tax
1847 1ST AVE N	St. Petersburg	Private Schools & Colleg	\$490,000	3,540	1973	\$10,259
511 S HERCULES AVE	Clearwater	Private Schools & Colleg	\$485,000	4,950	1970	\$9,870
1480 74TH ST N	St. Petersburg	Private Schools & Colleg	\$475,000	3,960	1970	\$9,860
905 PONCE DE LEON BLVD	Belleair	Private Schools & Colleg	\$465,000	7,120	1962	\$10,018
4025 49TH ST N	St. Petersburg	Private Schools & Colleg	\$460,000	3,633	1958	\$10,211
2671 SUNSET POINT RD	Clearwater	Private Schools & Colleg	\$460,000	4,172	1952	\$8,363
2285 CURLEW RD	Dunedin	Private Schools & Colleg	\$455,000	3,952	1981	\$8,464
2869 54TH AVE N	St. Petersburg	Private Schools & Colleg	\$450,000	2,958	1956	\$9,947
50 50TH ST S	St. Petersburg	Private Schools & Colleg	\$445,000	4,264	1952	\$9,362
5021 75TH AVE N	Pinellas Park	Private Schools & Colleg	\$440,000	8,000	1962	\$9,758
105 N LADY MARY DR	Clearwater	Private Schools & Colleg	\$430,000	1,833	1957	\$8,999
3696 FISHER RD	Palm Harbor	Private Schools & Colleg	\$430,000	3,805	1971	\$8,124
6262 62ND AVE N	Pinellas Park	Private Schools & Colleg	\$430,000	3,266	1969	\$9,443
313 18TH AVE S	St. Petersburg	Private Schools & Colleg	\$425,000	2,588	1961	\$10,458
1911 ATLANTIS DR	Clearwater	Private Schools & Colleg	\$420,000	3,599	1977	\$8,515
555 40TH ST N	St. Petersburg	Private Schools & Colleg	\$420,000	3,718	1967	\$8,765
5610 54TH AVE N	Kenneth City	Private Schools & Colleg	\$415,000	3,200	1984	\$9,158
6216 54TH AVE N	Kenneth City	Private Schools & Colleg	\$415,000	2,902	1985	\$8,618
6552 84TH AVE	Pinellas Park	Private Schools & Colleg	\$410,000	3,672	1957	\$9,034
7789 131ST ST N	Seminole	Private Schools & Colleg	\$405,000	7,296	1981	\$8,146
1301 N HIGHLAND AVE	Clearwater	Private Schools & Colleg	\$405,000	5,699	1971	\$8,234
3461 66TH AVE N	Pinellas Park	Private Schools & Colleg	\$405,000	7,912	1963	\$8,918
2095 BELLEAIR RD	Largo	Private Schools & Colleg	\$400,000	1,977	1982	\$7,975
6340 CENTRAL AVE	St. Petersburg	Private Schools & Colleg	\$400,000	2,406	1952	\$8,466
4401 38TH AVE N	St. Petersburg	Private Schools & Colleg	\$395,000	3,400	1956	\$10,358

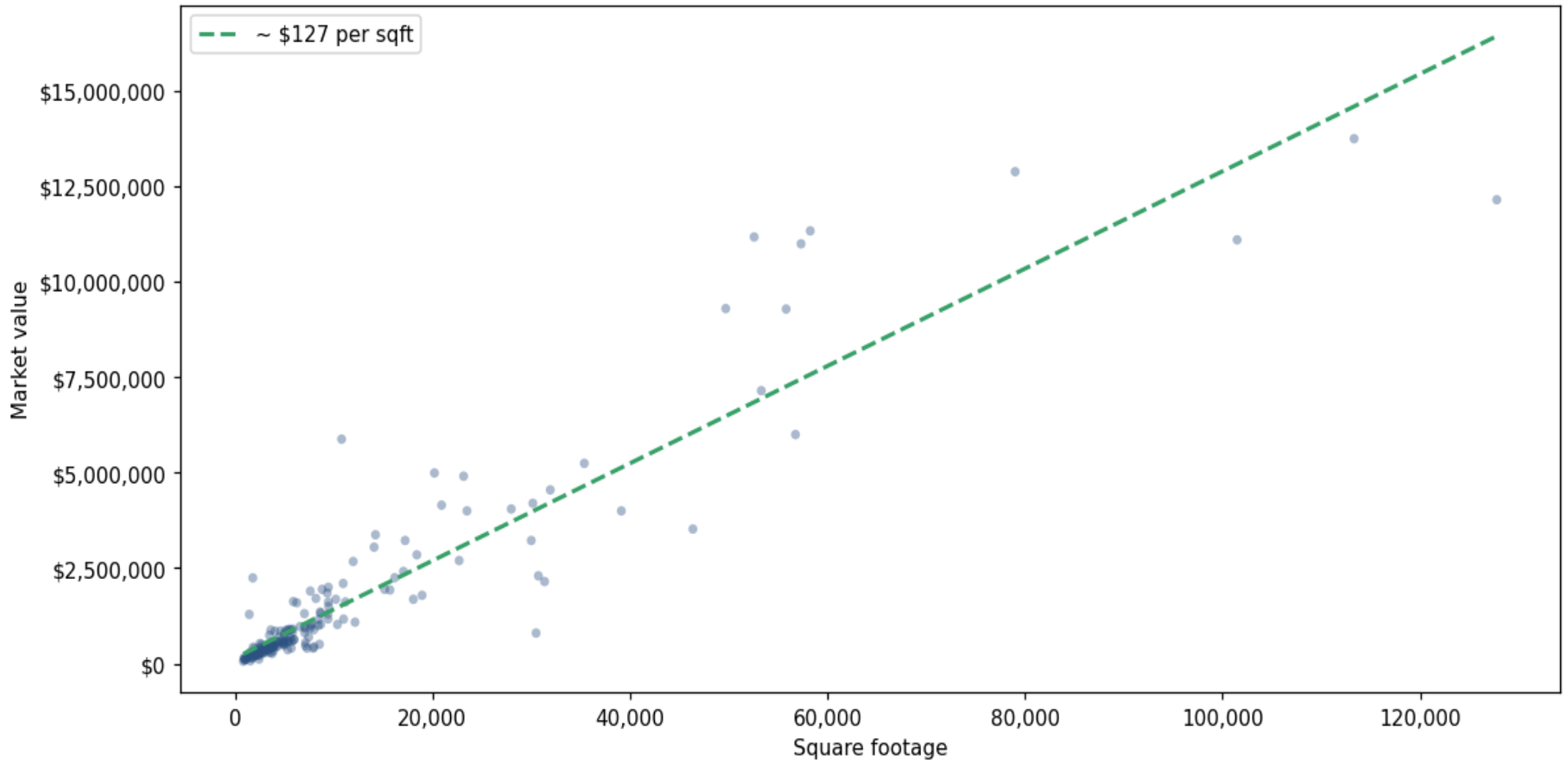
Address	City	Type	Market Value	Sq Ft	Year	Annual Tax
4920 94TH AVE	Pinellas Park	Private Schools & Colleg	\$390,000	3,362	1973	\$8,604
5295 EAST BAY DR	Largo	Private Schools & Colleg	\$375,000	3,170	1971	\$7,471
2855 HAINES BAYSHORE RD	Clearwater	Private Schools & Colleg	\$372,282	3,056	1963	\$6,502
1045 N MARTIN LUTHER KING JR AVE	Clearwater	Private Schools & Colleg	\$365,000	5,332	1945	\$7,451
15495 58TH ST N	Clearwater	Private Schools & Colleg	\$350,000	3,160	2023	\$6,745
13042 INDIAN ROCKS RD	Largo	Private Schools & Colleg	\$340,000	2,616	1937	\$6,769
1169 MARTIN LUTHER KING JR AVE	Dunedin	Private Schools & Colleg	\$335,000	3,875	1974	\$6,161
6881 40TH ST N	Pinellas Park	Private Schools & Colleg	\$325,000	2,666	1968	\$7,187
1766 49TH ST S	St. Petersburg	Private Schools & Colleg	\$322,500	2,405	1930	\$6,773
4500 38TH AVE N	St. Petersburg	Private Schools & Colleg	\$315,000	3,304	1965	\$6,474
8265 63RD WAY N	Pinellas Park	Private Schools & Colleg	\$305,000	2,888	1952	\$6,715
2886 WHITNEY RD	Clearwater	Private Schools & Colleg	\$300,000	2,554	1984	\$5,781
1029 GULF RD	Tarpon Springs	Private Schools & Colleg	\$300,000	2,632	1930	\$5,934
2201 CURTIS DR S	Clearwater	Private Schools & Colleg	\$294,584	1,518	1959	\$5,166
530 31ST ST S	St. Petersburg	Private Schools & Colleg	\$290,000	3,568	1959	\$6,076
2480 BELLEAIR RD	Clearwater	Private Schools & Colleg	\$280,000	2,920	1970	\$5,140
1194 GROVE ST	Clearwater	Private Schools & Colleg	\$280,000	2,245	1953	\$5,709
920 PALMETTO ST	Clearwater	Private Schools & Colleg	\$275,509	2,728	1960	\$5,510
2511 5TH AVE S	St. Petersburg	Private Schools & Colleg	\$267,500	3,764	1956	\$5,578
63 PATRICIA AVE	Dunedin	Private Schools & Colleg	\$267,500	2,240	1975	\$5,016
1219 61ST ST S	Gulfport	Private Schools & Colleg	\$265,000	1,939	1952	\$4,811
1215 LAKEVIEW RD	Clearwater	Private Schools & Colleg	\$265,000	1,558	1955	\$4,878
1100 N MARTIN LUTHER KING JR AVE	Clearwater	Private Schools & Colleg	\$253,980	2,400	1947	\$4,979
615 28TH ST S	St. Petersburg	Private Schools & Colleg	\$242,500	1,972	1973	\$5,080
2012 COUNTY ROAD 1	Dunedin	Private Schools & Colleg	\$240,000	2,119	1957	\$4,400

Address	City	Type	Market Value	Sq Ft	Year	Annual Tax
474 94TH AVE N	St. Petersburg	Private Schools & Colleg	\$240,000	1,765	1956	\$5,030
11775 WALSINGHAM RD	Seminole	Private Schools & Colleg	\$235,000	2,184	1961	\$6,273
150 RIVIERE RD	Palm Harbor	Private Schools & Colleg	\$235,000	2,320	1979	\$4,450
1240 49TH ST S	St. Petersburg	Private Schools & Colleg	\$234,094	1,374	1952	\$4,822
637 MICHIGAN BLVD	Dunedin	Private Schools & Colleg	\$227,500	2,125	1959	\$4,224
3024 PARK LN	Dunedin	Private Schools & Colleg	\$225,000	1,980	1972	\$4,187
1351 CLEARWATER-LARGO RD N	Largo	Private Schools & Colleg	\$220,000	1,453	1925	\$4,462
2742 PINE TREE LN	Clearwater	Private Schools & Colleg	\$210,000	2,422	1974	\$3,842
1100 62ND AVE S	St. Petersburg	Private Schools & Colleg	\$200,000	1,908	1967	\$4,233
1224 62ND ST S	Gulfport	Private Schools & Colleg	\$195,000	1,366	1956	\$3,577
812 13TH AVE NW	Largo	Private Schools & Colleg	\$185,000	1,390	1947	\$3,703
1259 BELLEAIR RD	Clearwater	Private Schools & Colleg	\$172,500	1,862	1955	\$3,181
3242 22ND AVE S	St. Petersburg	Private Schools & Colleg	\$160,000	1,582	1986	\$3,386
4931 1ST AVE S	St. Petersburg	Private Schools & Colleg	\$150,000	936	1940	\$3,088
1695 EAST BAY DR	Largo	Private Schools & Colleg	\$150,000	1,184	1947	\$2,990
701 N MISSOURI AVE	Clearwater	Private Schools & Colleg	\$140,000	1,728	1990	\$2,903
1800 49TH ST S	St. Petersburg	Private Schools & Colleg	\$135,000	900	1955	\$2,839
3327 33RD AVE N	St. Petersburg	Private Schools & Colleg	\$120,000	1,017	1958	\$2,520
2332 DR MARTIN LUTHER KING JR ST	St. Petersburg	Private Schools & Colleg	\$117,500	2,431	1952	\$2,490
5801 9TH AVE S	Gulfport	Private Schools & Colleg	\$102,500	1,080	1950	\$1,898
2836 55TH AVE N	St. Petersburg	Private Schools & Colleg	\$95,000	968	1957	\$2,105
1611 N FT HARRISON AVE	Clearwater	Private Schools & Colleg	\$75,000	1,556	1925	\$1,548
2330 DR MARTIN LUTHER KING JR ST	St. Petersburg	Private Schools & Colleg	\$62,500	836	1960	\$1,295

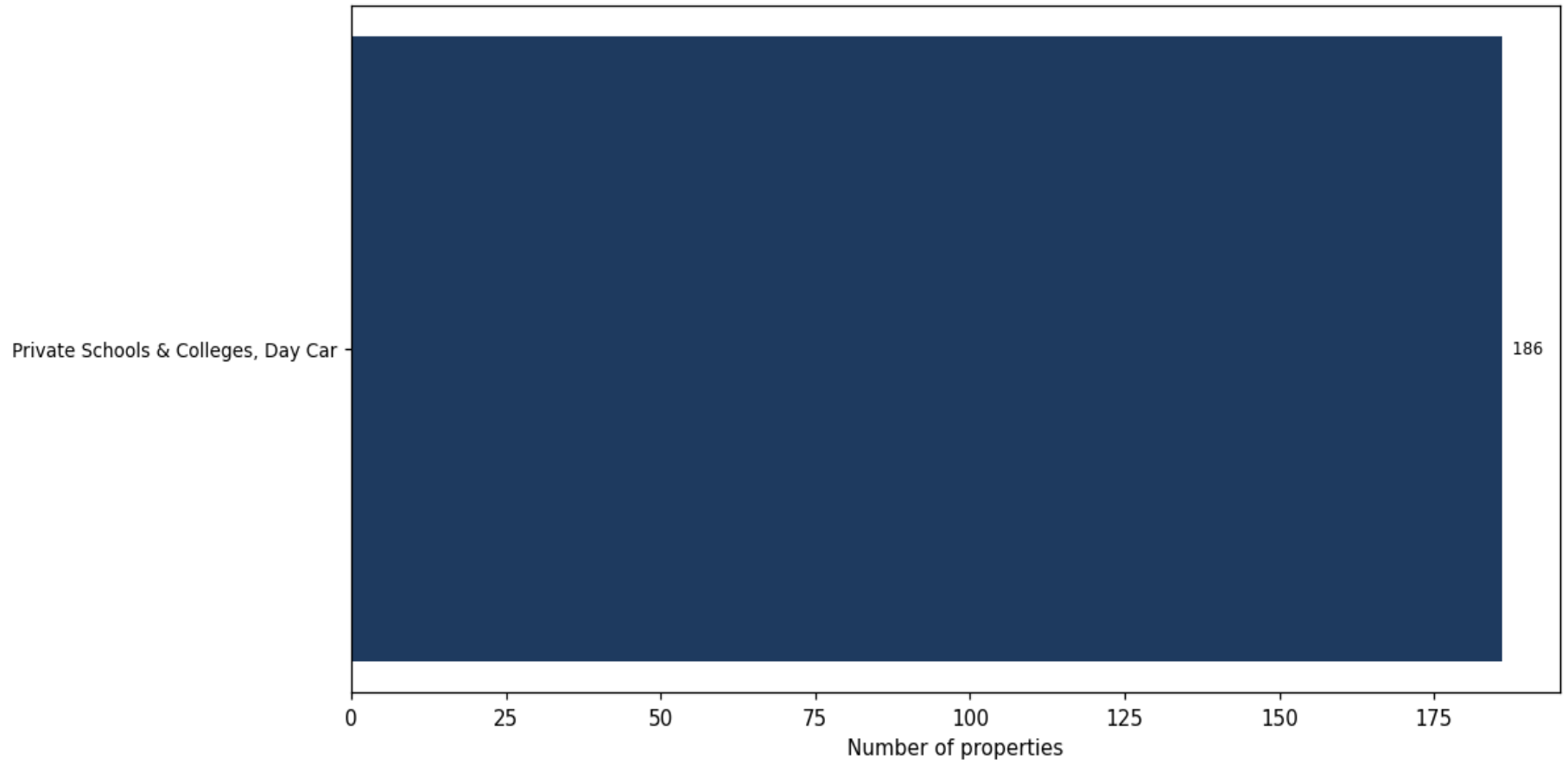
Market value distribution (n=186, top 1% trimmed for readability)



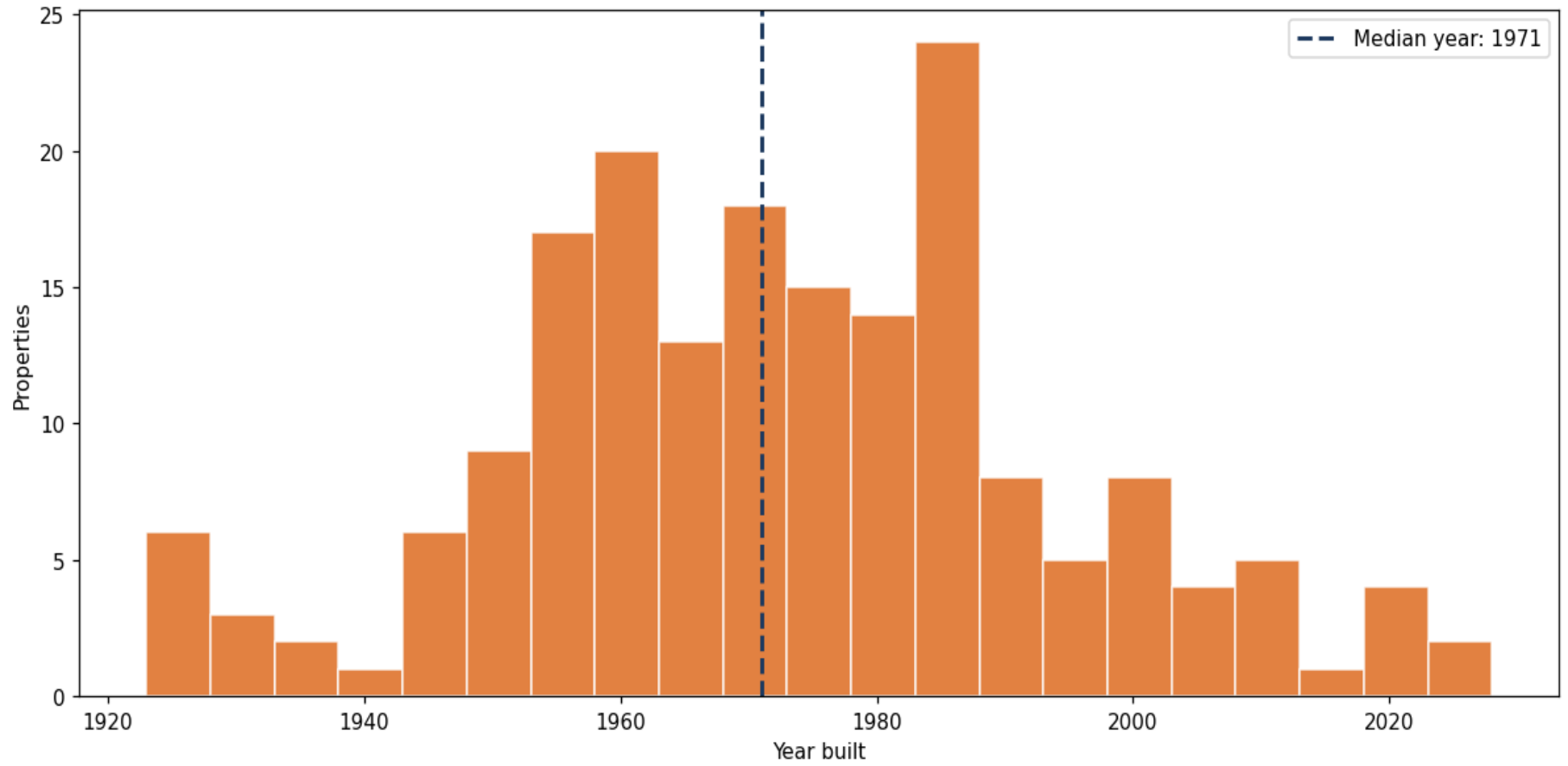
Building size vs. market value (n=182, outliers trimmed)



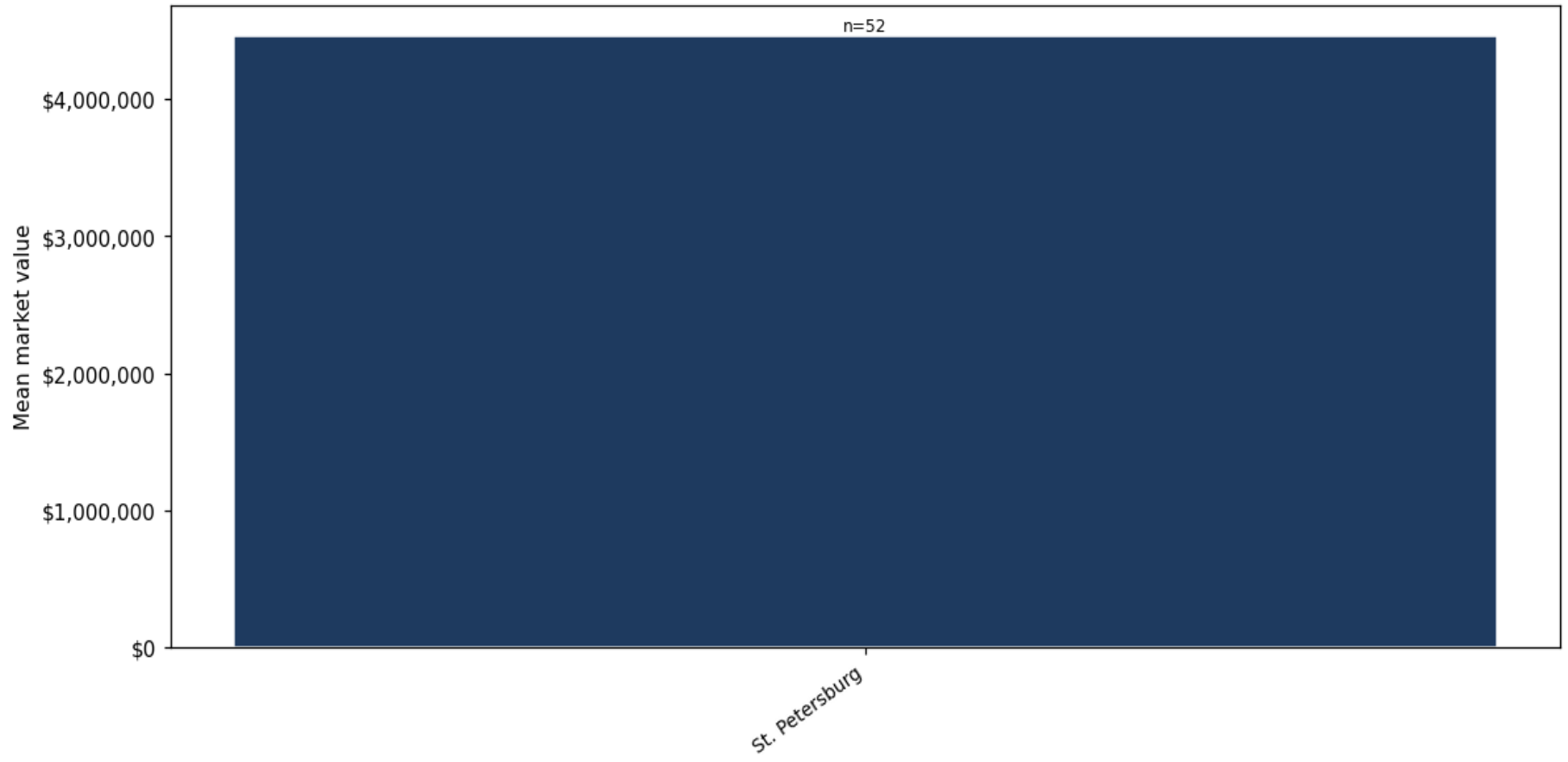
Top property types by count



Year built distribution (5-year buckets)



Mean market value by city (cities with ≥ 50 matches)



Market value vs. assessed value (gap = untaxed appreciation)

