

Pinellas Property Market Report

176 matching properties • May 30, 2026

Filters applied	Headline numbers
Property type: Non-Profit Charitable Services	Properties matched: 176
	Median market value: \$1,493,848
	Mean market value: \$3,054,434
	Min / Max: \$70,000 / \$62,765,887
	Mean square footage: 19,241

Top 176 properties by market value

Address	City	Type	Market Value	Sq Ft	Year	Annual Tax
2985 DREW ST	Clearwater	Non-Profit Charitable Se	\$62,765,887	305,970	2013	\$1,117,097
1021 5TH AVE N	St. Petersburg	Non-Profit Charitable Se	\$33,663,483	106,573		\$687,222
1501 N BELCHER RD	Clearwater	Non-Profit Charitable Se	\$14,522,297	128,209	1990	\$282,606
5885 66TH ST N	St. Petersburg	Non-Profit Charitable Se	\$13,810,140	104,772	1977	\$292,364
880 6TH ST S	St. Petersburg	Non-Profit Charitable Se	\$11,359,494	71,264	1990	\$230,007
1521 DRUID RD E	Clearwater	Non-Profit Charitable Se	\$10,728,892	49,739	2005	\$191,251
3200 1ST AVE S	St. Petersburg	Non-Profit Charitable Se	\$9,997,479	54,000	2001	\$186,585
3050 1ST AVE S	St. Petersburg	Non-Profit Charitable Se	\$8,625,536	35,123	2006	\$159,974
2675 TAMPA RD	Palm Harbor	Non-Profit Charitable Se	\$8,450,000	55,488	2000	\$156,158
3095 76TH WAY N	St. Petersburg	Non-Profit Charitable Se	\$8,320,643	71,913	1968	\$163,876
550 9TH AVE S	St. Petersburg	Non-Profit Charitable Se	\$8,311,386	65,739	1964	\$167,460
1400 4TH ST S	St. Petersburg	Non-Profit Charitable Se	\$8,000,057	38,705	1993	\$160,631
1625 N BELCHER RD	Clearwater	Non-Profit Charitable Se	\$7,589,528	39,644	1990	\$135,866

Address	City	Type	Market Value	Sq Ft	Year	Annual Tax
13800 66TH ST	Largo	Non-Profit Charitable Se	\$7,523,146	32,724	2003	\$128,556
13800 66TH ST	Largo	Non-Profit Charitable Se	\$7,503,014	37,620	1994	\$124,763
16432 US HIGHWAY 19 N	Clearwater	Non-Profit Charitable Se	\$6,843,630	38,599	1975	\$127,795
807 N MYRTLE AVE	Clearwater	Non-Profit Charitable Se	\$6,483,276	31,423	1999	\$125,798
1285 S FT HARRISON AVE	Clearwater	Non-Profit Charitable Se	\$6,412,005	21,312	1973	\$122,150
2473 58TH AVE N	St. Petersburg	Non-Profit Charitable Se	\$6,184,407	39,613	2015	\$119,389
500 7TH AVE S	St. Petersburg	Non-Profit Charitable Se	\$6,000,000	55,326	1960	\$123,004
10596 GANDY BLVD N	St. Petersburg	Non-Profit Charitable Se	\$6,000,000	161,314	1967	\$102,681
6720 54TH AVE N	St. Petersburg	Non-Profit Charitable Se	\$5,867,815	32,623	1994	\$135,540
1233 S FT HARRISON AVE	Clearwater	Non-Profit Charitable Se	\$5,696,486	48,463	1996	\$101,088
3040 STATE ROAD 590	Clearwater	Non-Profit Charitable Se	\$5,500,000	18,046	2024	\$116,113
4000 GATEWAY CENTRE BLVD	Pinellas Park	Non-Profit Charitable Se	\$5,492,636	24,916	2004	\$117,304
5726 126TH AVE N	Clearwater	Non-Profit Charitable Se	\$5,451,594	35,796	2010	\$98,555
401 15TH ST N	St. Petersburg	Non-Profit Charitable Se	\$5,415,167	41,352	1920	\$105,298
3850 TAMPA RD	Palm Harbor	Non-Profit Charitable Se	\$5,402,924	26,070	1993	\$93,139
1735 DR MARTIN LUTHER KING JR ST	St. Petersburg	Non-Profit Charitable Se	\$5,303,006	62,892	1968	\$108,001
9099 130TH AVE	Largo	Non-Profit Charitable Se	\$5,298,375	27,437	1960	\$92,929
14041 ICOT BLVD	Largo	Non-Profit Charitable Se	\$5,231,127	26,600	1991	\$94,783
6801 38TH AVE N	St. Petersburg	Non-Profit Charitable Se	\$5,033,159	33,950	1956	\$100,328
3868 9TH AVE N	St. Petersburg	Non-Profit Charitable Se	\$4,940,105	22,529	1960	\$100,675
460 8TH AVE S	St. Petersburg	Non-Profit Charitable Se	\$4,707,942	2,250	1955	\$101,129
9900 DR MARTIN LUTHER KING JR ST	St. Petersburg	Non-Profit Charitable Se	\$4,650,000	28,274	1981	\$95,615
303 PINELLAS ST	Clearwater	Non-Profit Charitable Se	\$4,448,456	35,187	1995	\$86,803
6150 150TH AVE N	Largo	Non-Profit Charitable Se	\$4,406,686	31,822	1980	\$82,905
100 STARCREST DR	Clearwater	Non-Profit Charitable Se	\$4,202,872	23,943	1985	\$81,620

Address	City	Type	Market Value	Sq Ft	Year	Annual Tax
445 31ST ST N	St. Petersburg	Non-Profit Charitable Se	\$4,152,685	27,975	1969	\$84,009
812 4TH AVE N	St. Petersburg	Non-Profit Charitable Se	\$4,119,582	20,252	2016	\$75,792
11254 58TH ST N	Pinellas Park	Non-Profit Charitable Se	\$3,959,444	44,071	1994	\$114,455
5718 126TH AVE N	Pinellas Park	Non-Profit Charitable Se	\$3,943,193	25,701	2016	\$73,004
3950 9TH AVE N	St. Petersburg	Non-Profit Charitable Se	\$3,853,899	14,174	2001	\$83,137
1011 1ST AVE N	St. Petersburg	Non-Profit Charitable Se	\$3,817,619	17,028	1961	\$76,048
11479 ULMERTON RD	Largo	Non-Profit Charitable Se	\$3,750,398	40,358	1984	\$71,653
2735 WHITNEY RD	Clearwater	Non-Profit Charitable Se	\$3,732,390	37,033	1967	\$63,380
863 3RD AVE N	St. Petersburg	Non-Profit Charitable Se	\$3,230,215	20,214	1927	\$59,163
707 DRUID RD E	Clearwater	Non-Profit Charitable Se	\$3,216,899	13,723	1975	\$58,074
247 CURLEW PL	Tarpon Springs	Non-Profit Charitable Se	\$3,208,600	24,381	1997	\$61,647
5180 62ND AVE N	Pinellas Park	Non-Profit Charitable Se	\$3,170,496	16,318	2004	\$66,593
1437 S BELCHER RD # 200	Clearwater	Non-Profit Charitable Se	\$3,091,819	31,155	1971	\$60,345
431 E SPRUCE ST	Tarpon Springs	Non-Profit Charitable Se	\$3,057,838	15,760	1983	\$58,114
777 4TH ST S	St. Petersburg	Non-Profit Charitable Se	\$2,957,851	16,974	1975	\$55,903
712 VIRGINIA ST	Dunedin	Non-Profit Charitable Se	\$2,954,093	3,640	1950	\$53,788
800 11TH ST N	St. Petersburg	Non-Profit Charitable Se	\$2,880,755	15,990	2001	\$54,365
7550 43RD ST N	Pinellas Park	Non-Profit Charitable Se	\$2,866,418	10,368	1991	\$62,053
5321 4TH ST N	St. Petersburg	Non-Profit Charitable Se	\$2,763,860	11,920	1982	\$57,369
1390 SUNSET POINT RD	Clearwater	Non-Profit Charitable Se	\$2,753,994	25,596	1969	\$57,681
1614 PALM WAY	Largo	Non-Profit Charitable Se	\$2,654,698	15,952	1962	\$47,009
1055 28TH ST S	St. Petersburg	Non-Profit Charitable Se	\$2,648,190	10,492	2019	\$48,260
2335 22ND AVE S	St. Petersburg	Non-Profit Charitable Se	\$2,635,711	23,281	1950	\$55,594
1403 N FT HARRISON AVE	Clearwater	Non-Profit Charitable Se	\$2,532,271	14,959	2014	\$47,024
2188 58TH ST N	Largo	Non-Profit Charitable Se	\$2,491,386	12,296	1983	\$44,596

Address	City	Type	Market Value	Sq Ft	Year	Annual Tax
4024 CENTRAL AVE	St. Petersburg	Non-Profit Charitable Se	\$2,467,893	20,182	1924	\$48,145
818 4TH ST N	St. Petersburg	Non-Profit Charitable Se	\$2,437,349	8,316	1959	\$46,045
11207 BLUE HERON BLVD N	St. Petersburg	Non-Profit Charitable Se	\$2,415,054	19,700	1997	\$44,269
6655 66TH ST N	Pinellas Park	Non-Profit Charitable Se	\$2,386,400	22,366	1974	\$54,397
9220 102ND AVE	Seminole	Non-Profit Charitable Se	\$2,350,000	11,577	1994	\$43,809
24400 US HIGHWAY 19 N	Clearwater	Non-Profit Charitable Se	\$2,329,533	14,920	1991	\$43,350
647 34TH AVE S	St. Petersburg	Non-Profit Charitable Se	\$2,220,365	15,021	1925	\$45,090
701 5TH AVE N	St. Petersburg	Non-Profit Charitable Se	\$2,123,882	9,320	1991	\$44,201
1615 UNION ST	Clearwater	Non-Profit Charitable Se	\$1,933,104	8,450	2006	\$34,484
818 MILWAUKEE AVE	Dunedin	Non-Profit Charitable Se	\$1,916,885	11,088	1972	\$34,144
1145 COURT ST	Clearwater	Non-Profit Charitable Se	\$1,845,077	8,204	1972	\$36,665
6015 66TH ST N	Pinellas Park	Non-Profit Charitable Se	\$1,774,769	25,040	2001	\$37,570
304 S PINELLAS AVE	Tarpon Springs	Non-Profit Charitable Se	\$1,700,000	32,324	1964	\$33,153
4801 78TH AVE N	Pinellas Park	Non-Profit Charitable Se	\$1,696,011	7,834	1955	\$35,687
2301 3RD AVE S	St. Petersburg	Non-Profit Charitable Se	\$1,682,344	23,390	1965	\$34,859
559 10TH ST N	St. Petersburg	Non-Profit Charitable Se	\$1,665,895	8,368	2001	\$32,815
550 16TH ST N	St. Petersburg	Non-Profit Charitable Se	\$1,663,353	20,775	1949	\$31,228
1332 7TH AVE N	St. Petersburg	Non-Profit Charitable Se	\$1,625,000	7,126	2010	\$33,366
401 9TH AVE S	St. Petersburg	Non-Profit Charitable Se	\$1,615,922	11,000	1985	\$33,454
5345 LAUREL PL	Clearwater	Non-Profit Charitable Se	\$1,584,925	9,287	1995	\$27,559
1339 PARK ST	Clearwater	Non-Profit Charitable Se	\$1,552,100	8,578	1998	\$30,283
1110 FAIRBURN AVE	Clearwater	Non-Profit Charitable Se	\$1,516,128	9,268	2007	\$27,307
2510 CENTRAL AVE	St. Petersburg	Non-Profit Charitable Se	\$1,503,312	14,754	1925	\$29,203
1446 S MISSOURI AVE	Clearwater	Non-Profit Charitable Se	\$1,500,000	12,250	1959	\$29,996
1200 N BETTY LN	Clearwater	Non-Profit Charitable Se	\$1,493,848	12,920	1972	\$27,151

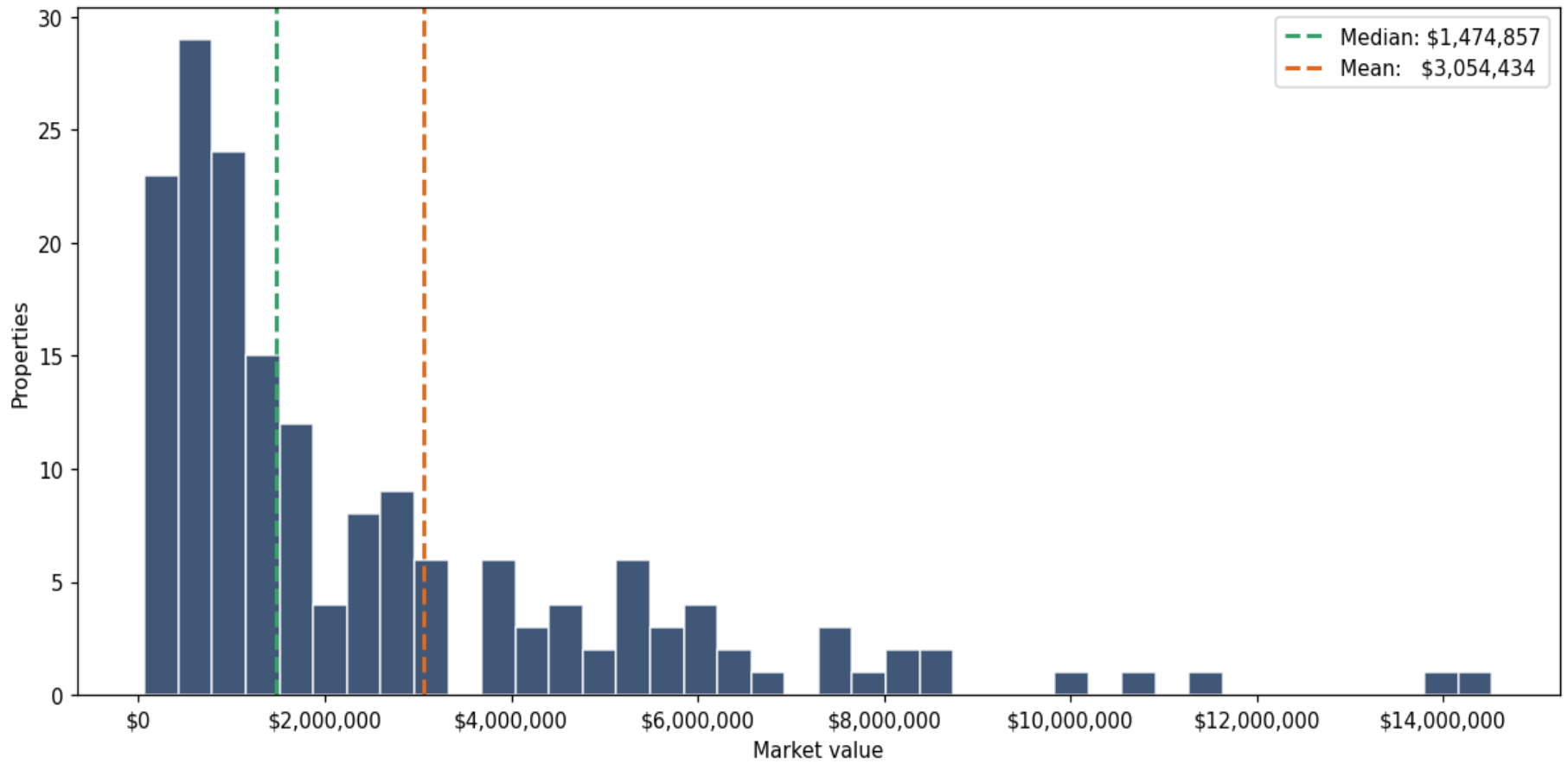
Address	City	Type	Market Value	Sq Ft	Year	Annual Tax
333 31ST ST N	St. Petersburg	Non-Profit Charitable Se	\$1,455,866	10,696	1966	\$29,205
3800 CENTRAL AVE	St. Petersburg	Non-Profit Charitable Se	\$1,429,586	7,600	1966	\$28,148
8823 115TH AVE	Largo	Non-Profit Charitable Se	\$1,419,965	9,478	1988	\$26,036
701 4TH ST S	St. Petersburg	Non-Profit Charitable Se	\$1,377,978	12,878	1950	\$25,830
4010 CENTRAL AVE	St. Petersburg	Non-Profit Charitable Se	\$1,359,867	7,424	1998	\$26,490
1801 5TH AVE N	St. Petersburg	Non-Profit Charitable Se	\$1,326,645	10,380	1957	\$27,743
1600 DR MARTIN LUTHER KING JR ST	St. Petersburg	Non-Profit Charitable Se	\$1,311,959	4,585	2003	\$24,701
3055 76TH WAY N	St. Petersburg	Non-Profit Charitable Se	\$1,259,801	6,913	1986	\$25,533
4950 34TH ST N	St. Petersburg	Non-Profit Charitable Se	\$1,224,913	6,424	1969	\$26,515
7601 PARK BLVD	Pinellas Park	Non-Profit Charitable Se	\$1,198,204	7,500	1986	\$23,713
520 CRYSTAL BEACH AVE	Crystal Beach	Non-Profit Charitable Se	\$1,158,883	2,036	1920	\$21,032
11095 131ST ST	Largo	Non-Profit Charitable Se	\$1,156,762	5,694	2000	\$19,603
5353 31ST ST N	St. Petersburg	Non-Profit Charitable Se	\$1,115,428	4,004	1991	\$22,004
1200 DRUID RD S	Clearwater	Non-Profit Charitable Se	\$1,104,913	9,024	1964	\$19,695
7400 62ND TER N	Pinellas Park	Non-Profit Charitable Se	\$1,085,000	7,791	1975	\$23,358
1189 NE CLEVELAND ST	Clearwater	Non-Profit Charitable Se	\$1,081,102	5,180	1953	\$19,210
16 S WALTON AVE	Tarpon Springs	Non-Profit Charitable Se	\$1,079,050	5,000	1998	\$18,996
5825 66TH ST N	St. Petersburg	Non-Profit Charitable Se	\$1,077,059	11,002	1982	\$24,983
3015 46TH AVE N	St. Petersburg	Non-Profit Charitable Se	\$1,050,000	11,100	1960	\$22,842
2880 CENTRAL AVE	St. Petersburg	Non-Profit Charitable Se	\$1,045,000	1,080	1964	\$21,513
207 JEFFORDS ST	Clearwater	Non-Profit Charitable Se	\$1,008,448	3,793	1959	\$19,823
4526 78TH LN N	St. Petersburg	Non-Profit Charitable Se	\$1,005,192	4,858	1941	\$19,475
3201 66TH ST N	St. Petersburg	Non-Profit Charitable Se	\$980,815	4,385	1987	\$18,253
6475 58TH AVE N	St. Petersburg	Non-Profit Charitable Se	\$950,952	2,642	1979	\$20,149
1001 16TH ST S	St. Petersburg	Non-Profit Charitable Se	\$947,894	5,956	1957	\$20,170

Address	City	Type	Market Value	Sq Ft	Year	Annual Tax
815 7TH AVE S	St. Petersburg	Non-Profit Charitable Se	\$946,098	7,080	1961	\$18,988
180 34TH ST N	St. Petersburg	Non-Profit Charitable Se	\$945,840	8,648	1969	\$17,857
384 15TH ST N	St. Petersburg	Non-Profit Charitable Se	\$941,499	5,851	1954	\$18,323
1763 9TH AVE N	St. Petersburg	Non-Profit Charitable Se	\$933,471	7,727	1948	\$18,238
1357 PARK ST	Clearwater	Non-Profit Charitable Se	\$891,590	4,830	2004	\$17,368
3110 75TH ST N	St. Petersburg	Non-Profit Charitable Se	\$870,114	4,480	1991	\$17,533
1622 TURNER ST	Clearwater	Non-Profit Charitable Se	\$867,679	4,098	2007	\$17,124
5975 66TH TER N	Pinellas Park	Non-Profit Charitable Se	\$858,359	12,000	2003	\$18,202
900 5TH ST S	St. Petersburg	Non-Profit Charitable Se	\$821,760	5,366	1959	\$15,431
1601 CLEARWATER-LARGO RD	Clearwater	Non-Profit Charitable Se	\$817,790	14,000	1974	\$14,939
607 JEFFORDS ST	Clearwater	Non-Profit Charitable Se	\$806,440	4,800	1974	\$15,644
480 7TH AVE S	St. Petersburg	Non-Profit Charitable Se	\$789,407	3,080	1990	\$14,790
3115 44TH AVE N	St. Petersburg	Non-Profit Charitable Se	\$775,000	12,725		\$16,842
700 DRUID RD E	Clearwater	Non-Profit Charitable Se	\$774,317	12,000	1970	\$15,771
1900 DR MARTIN LUTHER KING JR ST	St. Petersburg	Non-Profit Charitable Se	\$762,442	4,837	1960	\$13,982
815 CHESTNUT ST	Clearwater	Non-Profit Charitable Se	\$743,174	10,640	1970	\$14,031
1345 PARK ST	Clearwater	Non-Profit Charitable Se	\$742,436	6,060	1958	\$14,461
1211 N BETTY LN	Clearwater	Non-Profit Charitable Se	\$734,000	5,084	2006	\$13,125
12552 BELCHER RD S	Largo	Non-Profit Charitable Se	\$721,767	10,168	1981	\$11,896
2139 NE COACHMAN RD	Clearwater	Non-Profit Charitable Se	\$695,082	5,334	1985	\$13,632
330 49TH ST S	St. Petersburg	Non-Profit Charitable Se	\$695,000	5,076	1985	\$14,342
1215 N BETTY LN	Clearwater	Non-Profit Charitable Se	\$690,883	4,864	2004	\$12,432
800 11TH ST N	St. Petersburg	Non-Profit Charitable Se	\$678,540	5,056	2001	\$12,485
1050 BURLINGTON AVE N	St. Petersburg	Non-Profit Charitable Se	\$665,837	3,158	1930	\$12,261
7550 40TH ST	Pinellas Park	Non-Profit Charitable Se	\$647,532	7,635	1968	\$13,766

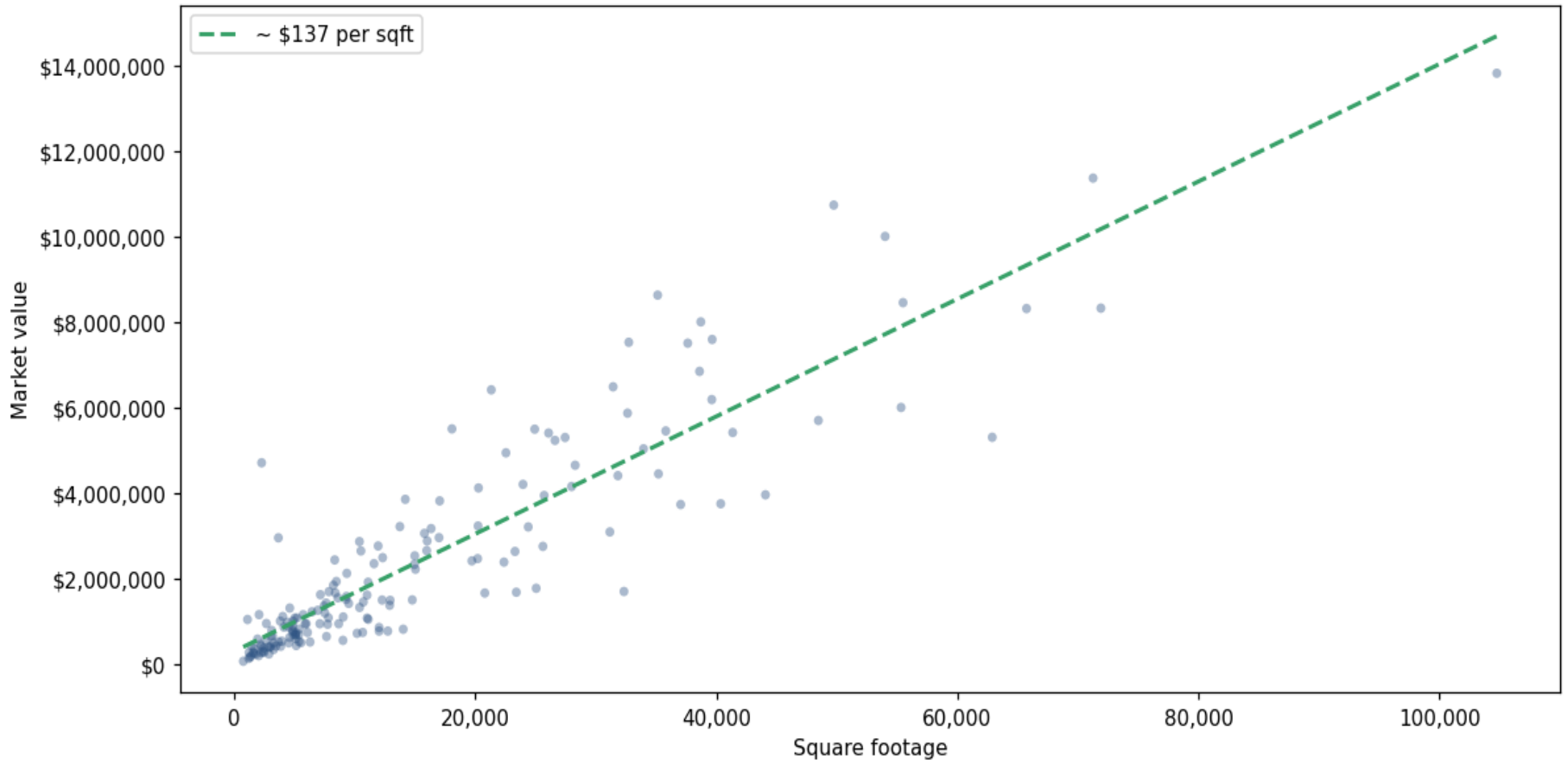
Address	City	Type	Market Value	Sq Ft	Year	Annual Tax
1112 DRUID RD S	Clearwater	Non-Profit Charitable Se	\$644,037	3,027	1956	\$12,585
918 WEST BAY DR	Largo	Non-Profit Charitable Se	\$625,000	4,575	1961	\$12,626
4123 37TH ST N	St. Petersburg	Non-Profit Charitable Se	\$600,000	5,088	1994	\$13,053
1350 E LAKE RD N	Tarpon Springs	Non-Profit Charitable Se	\$586,985	1,908	1958	\$10,980
6990 GULF BLVD	St. Pete Beach	Non-Profit Charitable Se	\$563,694	2,584	1971	\$9,082
1245 18TH AVE S	St. Petersburg	Non-Profit Charitable Se	\$557,553	9,000	1948	\$10,574
210 JEFFORDS ST	Clearwater	Non-Profit Charitable Se	\$538,415	3,924	1960	\$9,784
3000 16TH ST N	St. Petersburg	Non-Profit Charitable Se	\$528,782	5,353	1947	\$10,387
608 N GARDEN AVE	Clearwater	Non-Profit Charitable Se	\$523,290	3,652	1950	\$10,170
12601 WILCOX RD	Largo	Non-Profit Charitable Se	\$520,135	6,272	1960	\$8,617
1001 4TH ST S	St. Petersburg	Non-Profit Charitable Se	\$504,362	5,522	1949	\$10,269
624 4TH AVE N	Safety Harbor	Non-Profit Charitable Se	\$500,000	3,248	1983	\$9,005
1241 S FT HARRISON AVE	Clearwater	Non-Profit Charitable Se	\$500,000	4,498	1964	\$10,015
3941 68TH AVE N	Pinellas Park	Non-Profit Charitable Se	\$457,816	2,150	1967	\$9,649
2911 47TH AVE N	St. Petersburg	Non-Profit Charitable Se	\$437,341	5,120	1964	\$9,610
176 5TH AVE N	Safety Harbor	Non-Profit Charitable Se	\$425,000	3,434	1933	\$7,576
440 10TH AVE S	St. Petersburg	Non-Profit Charitable Se	\$421,619	1,420	1995	\$8,547
1700 34TH ST S	St. Petersburg	Non-Profit Charitable Se	\$420,000	3,840	1959	\$8,466
1277 OTIS C GREEN DR	Clearwater	Non-Profit Charitable Se	\$418,129	3,024	1955	\$7,707
4948 CENTRAL AVE	St. Petersburg	Non-Profit Charitable Se	\$412,925	2,220	1952	\$9,312
1327 DR MARTIN LUTHER KING JR ST	St. Petersburg	Non-Profit Charitable Se	\$401,537	2,804	1955	\$7,456
612 DR MARTIN LUTHER KING JR ST	St. Petersburg	Non-Profit Charitable Se	\$399,564	2,924	1926	\$7,537
1140 TURNER ST	Clearwater	Non-Profit Charitable Se	\$374,554	2,412	1954	\$7,121
206 JEFFORDS ST	Clearwater	Non-Profit Charitable Se	\$364,220	1,658	1957	\$7,204
664 SAN CHRISTOPHER DR	Dunedin	Non-Profit Charitable Se	\$345,000	3,251	1989	\$6,293

Address	City	Type	Market Value	Sq Ft	Year	Annual Tax
750 22ND AVE S	St. Petersburg	Non-Profit Charitable Se	\$300,000	2,388	1958	\$6,185
3545 5TH AVE	St. Petersburg	Non-Profit Charitable Se	\$280,173	1,569	1940	\$5,922
3537 5TH AVE N	St. Petersburg	Non-Profit Charitable Se	\$278,195	2,452	1952	\$5,706
1201 N BETTY LN	Clearwater	Non-Profit Charitable Se	\$273,075	2,223	1962	\$5,245
1246 16TH ST N	St. Petersburg	Non-Profit Charitable Se	\$272,030	1,196	1954	\$5,595
3638 1ST AVE N	St. Petersburg	Non-Profit Charitable Se	\$251,612	1,608	1948	\$5,228
620 32ND AVE S	St. Petersburg	Non-Profit Charitable Se	\$240,000	2,856	1942	\$4,980
6125 66TH ST N	Pinellas Park	Non-Profit Charitable Se	\$239,768	1,788	1952	\$5,069
925 LAKEVIEW RD	Clearwater	Non-Profit Charitable Se	\$198,963	2,000	1979	\$4,221
940 22ND AVE S	St. Petersburg	Non-Profit Charitable Se	\$193,398	1,352	1947	\$3,977
7400 62ND TER N	Pinellas Park	Non-Profit Charitable Se	\$164,126	1,300	1996	\$3,402
1402 N MARTIN LUTHER KING JR AVE	Clearwater	Non-Profit Charitable Se	\$135,700	1,170	1949	\$2,487
605 MARSHALL ST	Clearwater	Non-Profit Charitable Se	\$70,000	729	1923	\$1,403

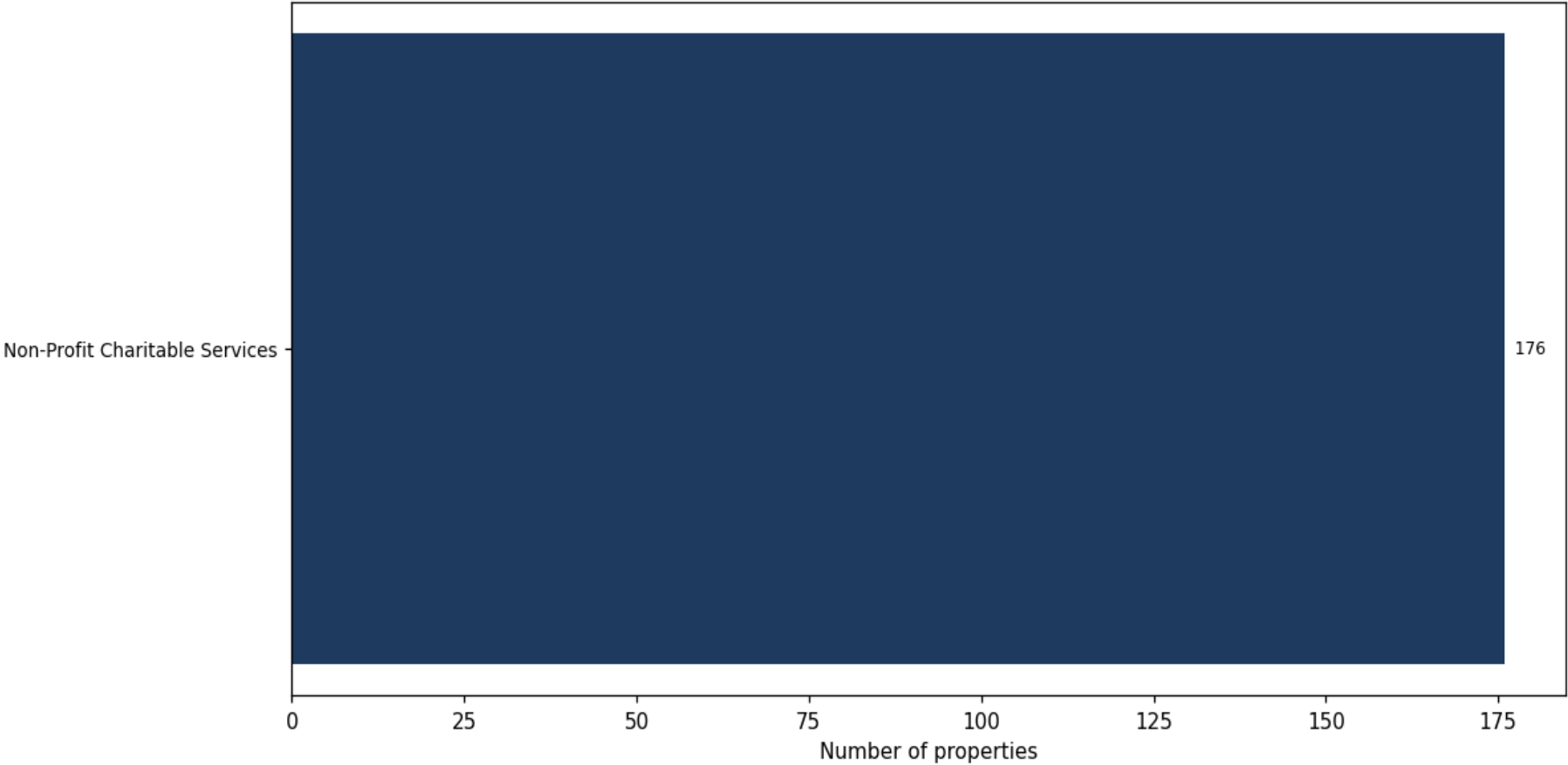
Market value distribution (n=176, top 1% trimmed for readability)



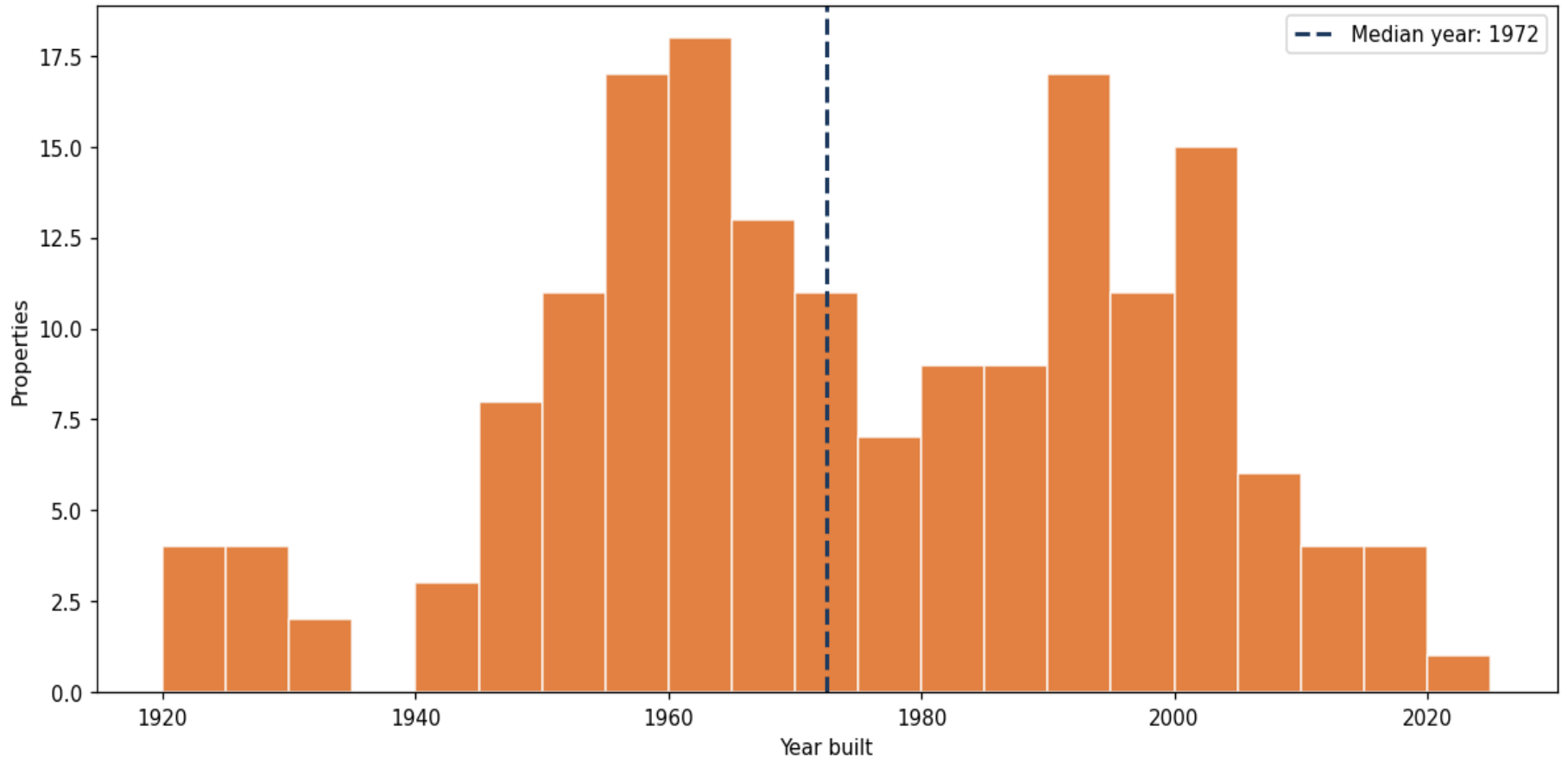
Building size vs. market value (n=172, outliers trimmed)



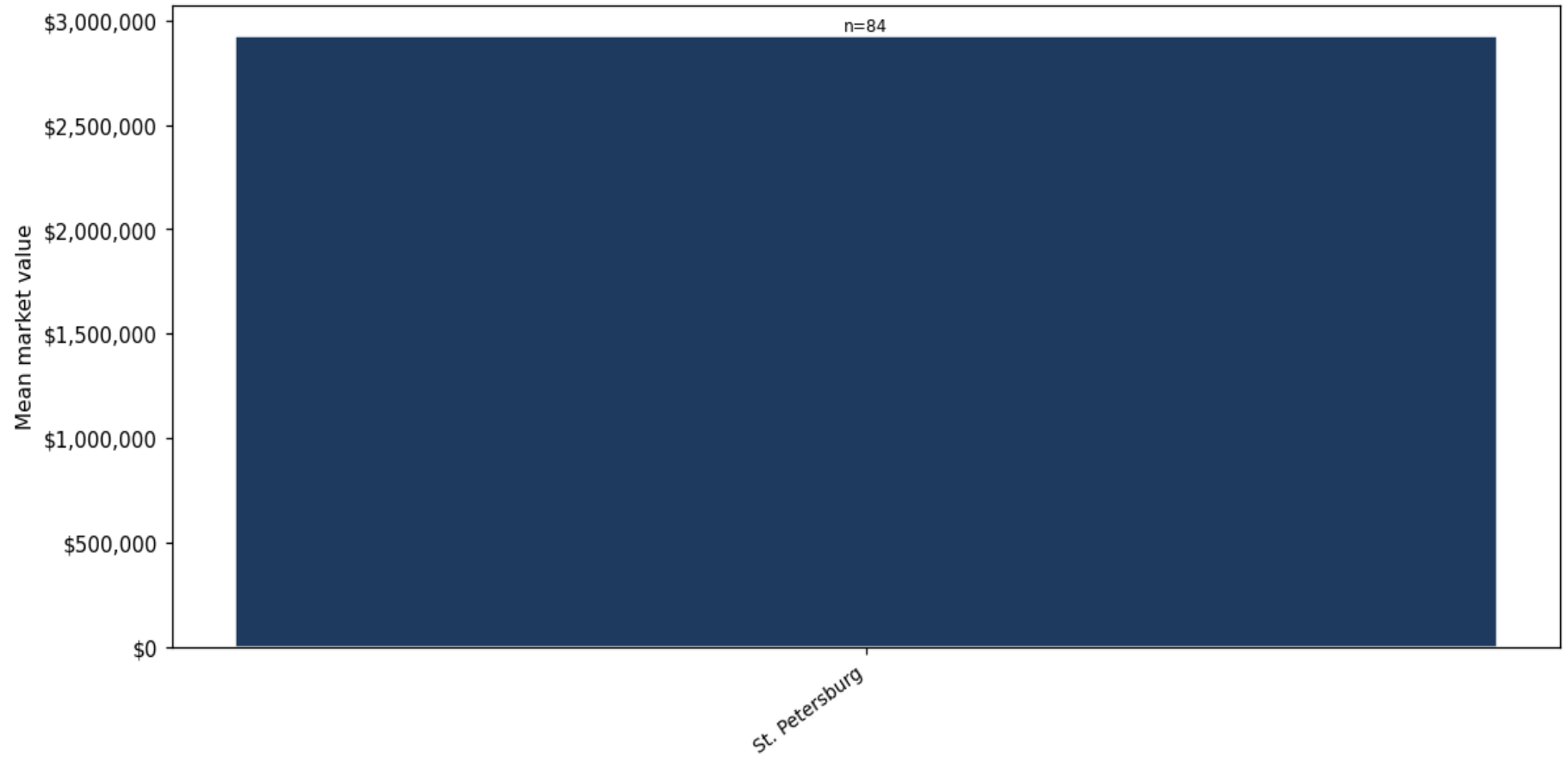
Top property types by count



Year built distribution (5-year buckets)



Mean market value by city (cities with ≥ 50 matches)



Market value vs. assessed value (gap = untaxed appreciation)

