

# Pinellas Property Market Report

844 matching properties • May 30, 2026

Filters applied	Headline numbers
<b>Property type:</b> Medical Office Building - single	<b>Properties matched:</b> 844
	<b>Median market value:</b> \$675,000
	<b>Mean market value:</b> \$1,165,454
	<b>Min / Max:</b> \$32,130 / \$26,000,000
	<b>Mean square footage:</b> 7,070

## Top 200 properties by market value

Address	City	Type	Market Value	Sq Ft	Year	Annual Tax
540 8TH ST S	St. Petersburg	Medical Office Building	—	14,750	2025	—
570 8TH ST S	St. Petersburg	Medical Office Building	—	59,730	2025	—
725 6TH AVE S	St. Petersburg	Medical Office Building	—	137,482	2025	—
1301 2ND AVE SW	Largo	Medical Office Building	\$26,000,000	154,512	2009	\$497,939
1240 S FT HARRISON AVE	Clearwater	Medical Office Building	\$21,170,000	101,981		\$409,686
1800 66TH ST N	St. Petersburg	Medical Office Building	\$19,762,714	45,821	2023	\$368,206
430 MORTON PLANT ST	Clearwater	Medical Office Building	\$15,620,000	90,917	2004	\$302,281
10100 DR MARTIN LUTHER KING JR S	St. Petersburg	Medical Office Building	\$14,200,000	124,685	1983	\$282,860
3280 N MCMULLEN BOOTH RD	Clearwater	Medical Office Building	\$11,500,000	43,124	2011	\$222,550
43309 US HIGHWAY 19 N	Tarpon Springs	Medical Office Building	\$10,020,000	79,900	1985	\$188,749
6006 49TH ST N	St. Petersburg	Medical Office Building	\$8,530,000	54,168	2004	\$205,785
3890 TAMPA RD	Palm Harbor	Medical Office Building	\$8,195,000	56,600	1994	\$147,944
1551 WEST BAY DR	Largo	Medical Office Building	\$8,150,000	105,892	1972	\$154,746

Address	City	Type	Market Value	Sq Ft	Year	Annual Tax
560 JACKSON ST N	St. Petersburg	Medical Office Building	\$7,750,000	47,306	2006	\$157,366
3131 MCMULLEN BOOTH RD	Safety Harbor	Medical Office Building	\$7,150,000	52,350	1988	\$124,533
1225 WEST BAY DR	Largo	Medical Office Building	\$6,900,000	28,594	2002	\$131,012
1325 BELCHER RD	Palm Harbor	Medical Office Building	\$5,775,055	20,584	2022	\$107,578
26286 US HIGHWAY 19 N	Clearwater	Medical Office Building	\$5,640,000	44,192	1984	\$130,627
6500 66TH ST N	Pinellas Park	Medical Office Building	\$5,480,000	33,687	2003	\$120,177
1603 N MISSOURI AVE	Largo	Medical Office Building	\$5,470,000	8,082	1972	\$103,860
500 DR MARTIN LUTHER KING JR ST	St. Petersburg	Medical Office Building	\$5,030,000	29,548	1985	\$100,196
1201 5TH AVE N # 130	St. Petersburg	Medical Office Building	\$5,000,000	23,062	1991	\$99,599
6450 38TH AVE N	St. Petersburg	Medical Office Building	\$4,990,000	43,200	1995	\$105,624
635 4TH ST N	St. Petersburg	Medical Office Building	\$4,940,000	15,624	2014	\$103,184
10051 5TH ST N	St. Petersburg	Medical Office Building	\$4,869,455	62,994	2025	\$376,263
34106 US HIGHWAY 19 N	Palm Harbor	Medical Office Building	\$4,850,000	19,210	2016	\$87,557
2191 9TH AVE N	St. Petersburg	Medical Office Building	\$4,600,000	38,580	1992	\$95,037
3251 MCMULLEN BOOTH RD	Safety Harbor	Medical Office Building	\$4,450,000	35,243	1985	\$77,507
2650 LANDMARK DR	Clearwater	Medical Office Building	\$4,200,000	32,788	2010	\$81,279
4600 4TH ST N	St. Petersburg	Medical Office Building	\$4,015,000	26,732	1978	\$83,762
100 HIGHLAND AVE N	Largo	Medical Office Building	\$3,930,000	21,503	2008	\$74,620
2201 CENTRAL AVE	St. Petersburg	Medical Office Building	\$3,920,000	21,050	2009	\$124,130
414 4TH AVE N	St. Petersburg	Medical Office Building	\$3,900,000	6,244	1950	\$79,828
2438 DR MARTIN LUTHER KING JR ST	St. Petersburg	Medical Office Building	\$3,890,000	19,890	2013	\$77,488
901 22ND AVE S	St. Petersburg	Medical Office Building	\$3,780,000	13,354	1997	\$78,025
2805 54TH AVE N	St. Petersburg	Medical Office Building	\$3,760,000	22,828	1999	\$83,116
1030 WEST BAY DR	Largo	Medical Office Building	\$3,750,000	21,995	2013	\$71,202
7050 ULMERTON RD	Largo	Medical Office Building	\$3,750,000	12,088	1999	\$77,069

Address	City	Type	Market Value	Sq Ft	Year	Annual Tax
7501 DR MARTIN LUTHER KING JR ST	St. Petersburg	Medical Office Building	\$3,700,000	5,691	2022	\$73,703
2339 GULF TO BAY BLVD	Clearwater	Medical Office Building	\$3,650,000	11,355	2014	\$70,636
29296 US HIGHWAY 19 N	Clearwater	Medical Office Building	\$3,570,000	17,220	1973	\$63,610
12416 66TH ST	Pinellas Park	Medical Office Building	\$3,515,000	20,403	2007	\$70,466
5651 49TH ST N	St. Petersburg	Medical Office Building	\$3,440,000	38,324	1985	\$82,763
705 16TH ST N	St. Petersburg	Medical Office Building	\$3,300,000	16,709	2004	\$69,321
2100 ALT 19	Palm Harbor	Medical Office Building	\$3,195,000	36,622	1988	\$60,567
13777 BELCHER RD S	Largo	Medical Office Building	\$3,185,000	22,073	1989	\$63,246
6400 4TH ST N	St. Petersburg	Medical Office Building	\$3,100,000	9,672	1982	\$64,739
2210 STATE ROAD 580	Dunedin	Medical Office Building	\$3,100,000	14,364	2003	\$55,235
1955 1ST AVE N	St. Petersburg	Medical Office Building	\$3,095,000	14,866	1986	\$62,946
26034 US HIGHWAY 19 N	Clearwater	Medical Office Building	\$3,050,000	18,466	1991	\$59,024
3220 N MCMULLEN BOOTH RD	Clearwater	Medical Office Building	\$3,030,000	16,568	2020	\$58,637
7100 4TH ST N	St. Petersburg	Medical Office Building	\$3,020,000	4,045	2007	\$63,200
2100 1ST AVE S	St. Petersburg	Medical Office Building	\$3,005,000	14,201	1960	\$62,847
6600 66TH ST N	Pinellas Park	Medical Office Building	\$2,990,000	17,230	1989	\$65,324
7655 38TH AVE N	St. Petersburg	Medical Office Building	\$2,985,000	20,270	1988	\$63,494
7800 66TH ST N	Pinellas Park	Medical Office Building	\$2,970,000	30,912	1985	\$65,681
446 4TH ST S	St. Petersburg	Medical Office Building	\$2,960,000	4,968	1920	\$58,962
6950 CENTRAL AVE	St. Petersburg	Medical Office Building	\$2,950,000	13,160	1981	\$61,353
2050 62ND AVE N	St. Petersburg	Medical Office Building	\$2,945,000	15,979	1997	\$62,927
840 DR MARTIN LUTHER KING JR ST	St. Petersburg	Medical Office Building	\$2,940,000	14,022	2003	\$58,564
13787 BELCHER RD S	Largo	Medical Office Building	\$2,900,000	24,377	1984	\$59,022
1988 GULF TO BAY BLVD	Clearwater	Medical Office Building	\$2,880,000	22,725	1974	\$55,734
3070 GRAND AVE	Pinellas Park	Medical Office Building	\$2,870,000	11,475	2018	\$60,225

Address	City	Type	Market Value	Sq Ft	Year	Annual Tax
1839 CENTRAL AVE	St. Petersburg	Medical Office Building	\$2,830,000	19,450	1979	\$59,281
35750 US HIGHWAY 19 N	Palm Harbor	Medical Office Building	\$2,805,000	10,800	2016	\$50,638
400 12TH AVE N	St. Petersburg	Medical Office Building	\$2,770,000	10,093	1960	\$58,106
1121 OVERCASH DR	Dunedin	Medical Office Building	\$2,750,000	9,492	1996	\$48,493
2111 DREW ST	Clearwater	Medical Office Building	\$2,690,000	13,442	1975	\$52,057
1055 S FT HARRISON AVE	Clearwater	Medical Office Building	\$2,675,000	15,087	1995	\$51,767
1775 EAST BAY DR	Largo	Medical Office Building	\$2,660,000	11,126	2021	\$50,506
6701 38TH AVE N	St. Petersburg	Medical Office Building	\$2,610,000	23,120	1974	\$54,381
3101 37TH AVE N	St. Petersburg	Medical Office Building	\$2,600,000	30,356	1963	\$53,982
37026 US HIGHWAY 19 N	Palm Harbor	Medical Office Building	\$2,590,000	18,664	1980	\$46,757
6133 CENTRAL AVE	St. Petersburg	Medical Office Building	\$2,580,000	19,506	1962	\$121,510
3250 5TH AVE N	St. Petersburg	Medical Office Building	\$2,575,204	11,832	1967	\$47,697
1330 S MISSOURI AVE	Clearwater	Medical Office Building	\$2,535,000	20,442	1960	\$49,058
2251 DREW ST	Clearwater	Medical Office Building	\$2,530,000	15,966	1985	\$48,961
501 S FT HARRISON AVE	Clearwater	Medical Office Building	\$2,530,000	15,084	1963	\$51,415
744 6TH AVE S	St. Petersburg	Medical Office Building	\$2,510,000	5,173	1985	\$53,684
9555 SEMINOLE BLVD # 102	Seminole	Medical Office Building	\$2,500,000	25,712	1985	\$39,866
7599 PARK BLVD	Pinellas Park	Medical Office Building	\$2,500,000	13,450	2014	\$52,461
3328 49TH ST N	St. Petersburg	Medical Office Building	\$2,495,000	5,600	2023	\$52,030
1106 DRUID RD S	Clearwater	Medical Office Building	\$2,470,000	19,432	1977	\$47,800
1601 38TH AVE N	St. Petersburg	Medical Office Building	\$2,460,000	17,157	1956	\$51,572
4050 34TH ST S	St. Petersburg	Medical Office Building	\$2,450,000	7,854	2014	\$51,204
41747 US HIGHWAY 19 N	Tarpon Springs	Medical Office Building	\$2,415,000	10,186	2018	\$45,492
6333 54TH AVE N	St. Petersburg	Medical Office Building	\$2,390,000	13,526	2003	\$56,669
6778 22ND AVE N	St. Petersburg	Medical Office Building	\$2,360,000	5,810	2002	\$48,604

Address	City	Type	Market Value	Sq Ft	Year	Annual Tax
1401 WEST BAY DR	Largo	Medical Office Building	\$2,325,000	15,816	1974	\$44,145
1201 7TH AVE N	St. Petersburg	Medical Office Building	\$2,290,000	5,716	2006	\$47,409
2375 CURLEW RD	Clearwater	Medical Office Building	\$2,275,000	6,172	1985	\$40,536
2701 54TH AVE S	St. Petersburg	Medical Office Building	\$2,250,000	12,410	2008	\$47,279
1546 MAIN ST	Dunedin	Medical Office Building	\$2,250,000	20,139	1986	\$39,604
13644 WALSINGHAM RD	Largo	Medical Office Building	\$2,245,000	16,249	1980	\$42,626
8900 PARK BLVD	Seminole	Medical Office Building	\$2,240,000	9,599	2015	\$35,720
5651 38TH AVE N	St. Petersburg	Medical Office Building	\$2,240,000	12,450	1976	\$46,413
4520 EAST BAY DR	Largo	Medical Office Building	\$2,215,000	8,816	1980	\$42,057
3253 MCMULLEN BOOTH RD	Safety Harbor	Medical Office Building	\$2,205,000	15,633	1983	\$38,405
3600 66TH ST N	St. Petersburg	Medical Office Building	\$2,200,000	7,014	2022	\$45,517
6735 CROSSWINDS DR N	St. Petersburg	Medical Office Building	\$2,195,000	11,361	2001	\$56,393
6499 38TH AVE N	St. Petersburg	Medical Office Building	\$2,165,000	19,381	1973	\$38,843
2650 ROOSEVELT BLVD	Largo	Medical Office Building	\$2,150,000	4,013	2007	\$42,759
4705 ALT 19 N	Palm Harbor	Medical Office Building	\$2,150,000	12,044	1959	\$40,664
26338 US HIGHWAY 19 N	Clearwater	Medical Office Building	\$2,140,000	13,878	1985	\$41,414
2481 SUNSET POINT RD	Clearwater	Medical Office Building	\$2,140,000	7,430	2001	\$41,414
612 DRUID RD E	Clearwater	Medical Office Building	\$2,115,000	14,424	2009	\$40,930
5747 38TH AVE N	St. Petersburg	Medical Office Building	\$2,090,000	15,908	1964	\$43,226
6161 DR MARTIN LUTHER KING JR ST	St. Petersburg	Medical Office Building	\$2,075,000	14,260	1980	\$41,333
2451 ENTERPRISE RD	Clearwater	Medical Office Building	\$2,040,000	16,218	1981	\$39,478
1260 S MARTIN LUTHER KING JR AVE	Clearwater	Medical Office Building	\$2,030,000	13,368	1984	\$39,285
7601 DR MARTIN LUTHER KING JR ST	St. Petersburg	Medical Office Building	\$2,025,000	10,610	1987	\$40,337
1573 S FT HARRISON AVE	Clearwater	Medical Office Building	\$2,020,000	12,620	1964	\$39,091
650 34TH ST S	St. Petersburg	Medical Office Building	\$1,985,000	10,316	2006	\$41,931

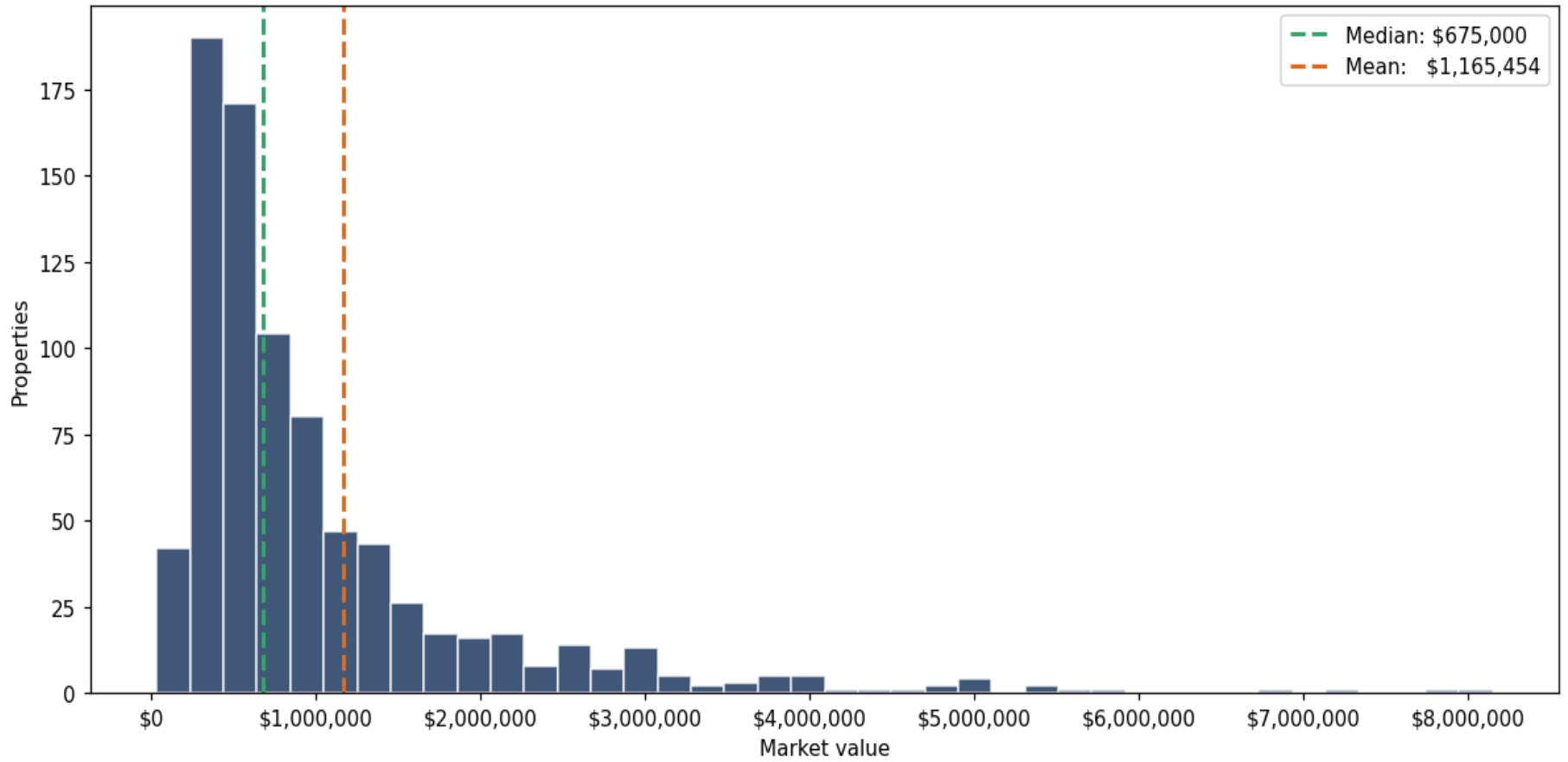
Address	City	Type	Market Value	Sq Ft	Year	Annual Tax
4641 PARK ST N	St. Petersburg	Medical Office Building	\$1,950,000	6,968	1977	\$41,053
5500 DR MARTIN LUTHER KING JR ST	St. Petersburg	Medical Office Building	\$1,950,000	11,148	1999	\$38,843
6449 38TH AVE N	St. Petersburg	Medical Office Building	\$1,950,000	18,204	1974	\$40,078
3291 MCMULLEN BOOTH RD	Safety Harbor	Medical Office Building	\$1,950,000	10,567	1992	\$33,964
2832 4TH ST N	St. Petersburg	Medical Office Building	\$1,940,000	2,656	1991	\$38,644
3001 EASTLAND BLVD	Clearwater	Medical Office Building	\$1,920,000	14,658	1985	\$37,156
1425 4TH ST N	St. Petersburg	Medical Office Building	\$1,900,000	7,489	1920	\$39,740
585 MAIN ST	Dunedin	Medical Office Building	\$1,900,000	4,350	2003	\$33,443
9375 66TH ST	Pinellas Park	Medical Office Building	\$1,890,000	9,415	1991	\$41,339
2626 TAMPA RD	Palm Harbor	Medical Office Building	\$1,860,000	14,388	1986	\$33,578
921 S MISSOURI AVE	Clearwater	Medical Office Building	\$1,860,000	3,430	1984	\$35,995
6540 4TH ST N	St. Petersburg	Medical Office Building	\$1,850,000	8,532	2003	\$38,644
501 DR MARTIN LUTHER KING JR ST	St. Petersburg	Medical Office Building	\$1,840,000	7,536	2004	\$36,652
110 STATE ST E	Oldsmar	Medical Office Building	\$1,805,000	10,100	1996	\$31,619
1515 9TH AVE N	St. Petersburg	Medical Office Building	\$1,785,000	9,864	1993	\$36,752
980 MILWAUKEE AVE	Dunedin	Medical Office Building	\$1,780,000	7,739	2020	\$31,331
3745 33RD ST N	St. Petersburg	Medical Office Building	\$1,780,000	8,448	1985	\$37,210
3129 ALT 19	Palm Harbor	Medical Office Building	\$1,780,000	10,000	2009	\$33,759
617 LAKEVIEW RD	Clearwater	Medical Office Building	\$1,750,000	15,024	1985	\$33,866
3155 MCMULLEN BOOTH RD	Safety Harbor	Medical Office Building	\$1,745,000	9,767	2002	\$30,393
609 INDIAN ROCKS RD	Belleair	Medical Office Building	\$1,730,000	5,243	1971	\$35,370
1233 S MYRTLE AVE	Clearwater	Medical Office Building	\$1,730,000	14,527	1998	\$33,576
7500 PARK BLVD	Pinellas Park	Medical Office Building	\$1,730,000	8,089	2011	\$36,303
5600 22ND ST N	St. Petersburg	Medical Office Building	\$1,700,000	7,796	2012	\$35,357
32919 US HIGHWAY 19 N	Palm Harbor	Medical Office Building	\$1,700,000	8,369	1994	\$30,690

Address	City	Type	Market Value	Sq Ft	Year	Annual Tax
913 1ST AVE N	St. Petersburg	Medical Office Building	\$1,690,000	3,136	1997	\$33,983
2323 CURLEW RD # 5	Dunedin	Medical Office Building	\$1,685,000	8,076	2002	\$30,023
6775 CROSSWINDS DR N	St. Petersburg	Medical Office Building	\$1,665,000	8,959	1996	\$33,166
3901 66TH ST N # 201	St. Petersburg	Medical Office Building	\$1,620,000	9,660	1969	\$33,585
4650 4TH ST N	St. Petersburg	Medical Office Building	\$1,615,000	8,863	1995	\$33,664
6640 78TH AVE N	Pinellas Park	Medical Office Building	\$1,610,000	8,016	2005	\$64,359
5501 4TH ST N	St. Petersburg	Medical Office Building	\$1,596,505	7,050	1989	\$33,156
2861 34TH ST S	St. Petersburg	Medical Office Building	\$1,590,000	9,824	1974	\$33,067
2424 CURLEW RD	Palm Harbor	Medical Office Building	\$1,580,000	8,140	1995	\$28,524
5398 PARK ST N	Seminole	Medical Office Building	\$1,560,000	9,761	1984	\$24,877
3451 66TH ST N	St. Petersburg	Medical Office Building	\$1,550,000	9,480	1981	\$32,111
7321 PARK BLVD	Pinellas Park	Medical Office Building	\$1,540,000	3,000	2002	\$32,316
2250 DREW ST	Clearwater	Medical Office Building	\$1,520,000	10,900	1990	\$29,415
2200 56TH ST S	Gulfport	Medical Office Building	\$1,515,000	4,590	2023	\$27,726
1130 PONCE DE LEON BLVD	Largo	Medical Office Building	\$1,515,000	11,953	1983	\$28,766
1180 JASPER ST	Largo	Medical Office Building	\$1,510,000	14,218	1963	\$28,671
3100 4TH ST N	St. Petersburg	Medical Office Building	\$1,505,000	6,548	2015	\$31,772
301 TURNER ST	Clearwater	Medical Office Building	\$1,500,000	8,550	1982	\$29,028
11550 ULMERTON RD	Seminole	Medical Office Building	\$1,500,000	7,003	1995	\$26,509
915 CHESTNUT ST	Clearwater	Medical Office Building	\$1,495,000	14,404	1988	\$30,382
39564 US HIGHWAY 19 N	Tarpon Springs	Medical Office Building	\$1,490,000	11,460	1988	\$28,067
2150 49TH ST N	St. Petersburg	Medical Office Building	\$1,490,000	12,972	1986	\$31,383
6399 38TH AVE N # C6	St. Petersburg	Medical Office Building	\$1,475,000	9,468	1976	\$30,477
3800 5TH AVE N	St. Petersburg	Medical Office Building	\$1,470,000	11,848	1958	\$30,676
7292 4TH ST N	St. Petersburg	Medical Office Building	\$1,470,000	7,622	1990	\$30,716

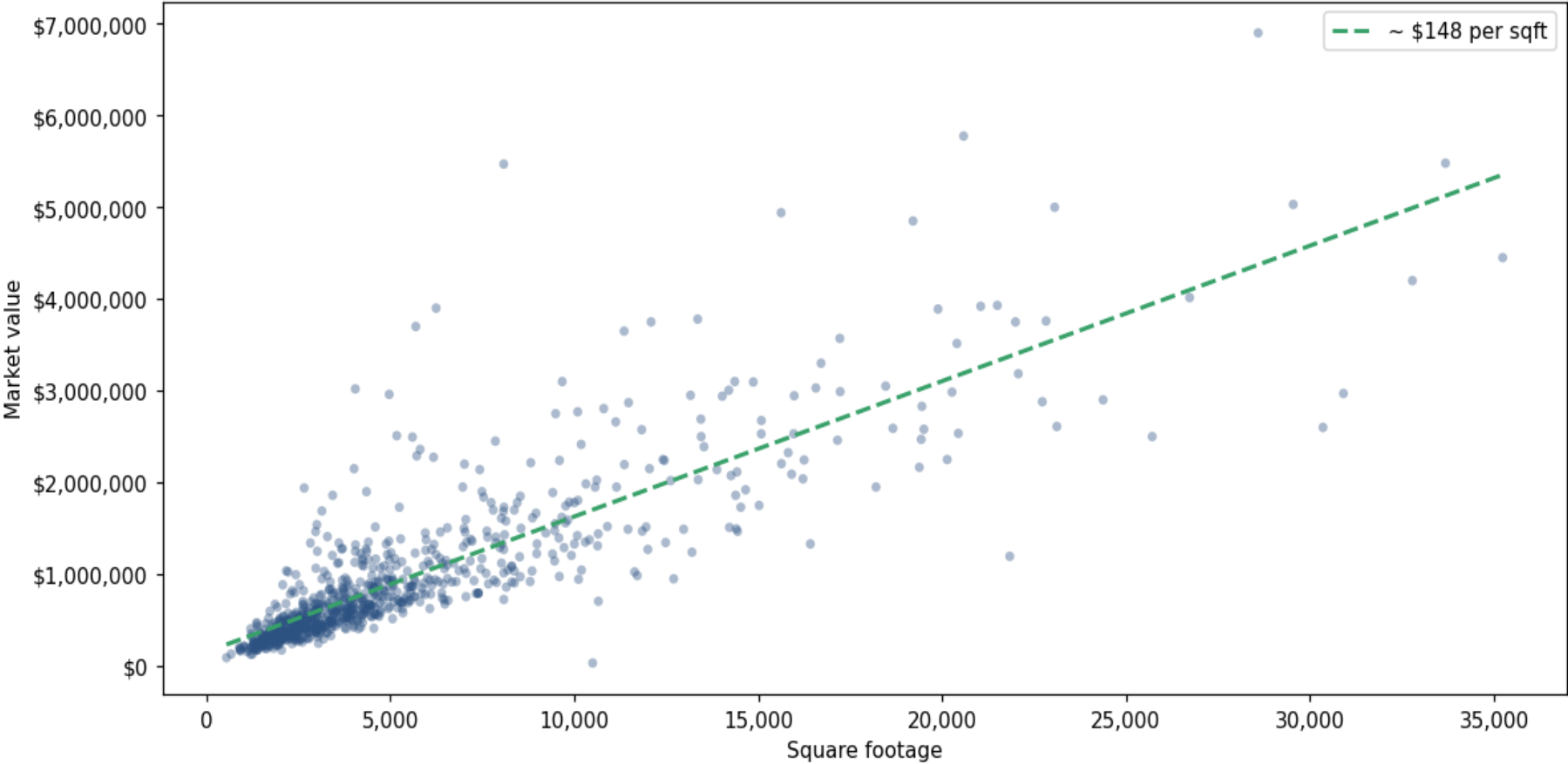
Address	City	Type	Market Value	Sq Ft	Year	Annual Tax
7500 GULF BLVD	St. Pete Beach	Medical Office Building	\$1,467,500	14,440	1955	\$23,228
326 5TH AVE N	St. Petersburg	Medical Office Building	\$1,465,000	2,967	2020	\$30,646
1117 ARLINGTON AVE N	St. Petersburg	Medical Office Building	\$1,460,000	7,031	1948	\$29,123
3870 TAMPA RD	Oldsmar	Medical Office Building	\$1,460,000	6,358	1989	\$25,575
7500 BRYAN DAIRY RD	Pinellas Park	Medical Office Building	\$1,450,000	9,227	2002	\$28,963
1116 DR MARTIN LUTHER KING JR ST	St. Petersburg	Medical Office Building	\$1,450,000	5,949	2020	\$28,884
508 JEFFORDS ST # C	Clearwater	Medical Office Building	\$1,440,000	10,652	1985	\$27,867
7300 4TH ST N	St. Petersburg	Medical Office Building	\$1,430,000	8,104	1974	\$29,860
725 E LAKE RD N	Tarpon Springs	Medical Office Building	\$1,420,000	10,082	1988	\$25,634
350 6TH ST S	St. Petersburg	Medical Office Building	\$1,410,000	3,288	1973	\$27,429
34156 US HIGHWAY 19 N	Palm Harbor	Medical Office Building	\$1,405,000	7,870	1985	\$25,364
1747 16TH ST N	St. Petersburg	Medical Office Building	\$1,405,000	7,644	2023	\$30,168
2201 62ND AVE N	St. Petersburg	Medical Office Building	\$1,395,000	9,583	2006	\$29,103
600 8TH ST S	St. Petersburg	Medical Office Building	\$1,385,000	5,280	1981	\$28,903
19919 US HIGHWAY 19 N	Clearwater	Medical Office Building	\$1,380,000	7,188	1970	\$26,706
34629 US HIGHWAY 19 N	Palm Harbor	Medical Office Building	\$1,375,000	10,410	1983	\$24,823
2560 ENTERPRISE RD	Clearwater	Medical Office Building	\$1,375,000	5,972	1980	\$26,609
1370 MAIN ST	Dunedin	Medical Office Building	\$1,360,000	4,960	1998	\$36,876
1122 DRUID RD E	Clearwater	Medical Office Building	\$1,360,000	7,221	1979	\$26,319
4551 4TH ST N	St. Petersburg	Medical Office Building	\$1,350,000	4,401	2010	\$28,147
4957 38TH AVE N	St. Petersburg	Medical Office Building	\$1,350,000	10,300	1981	\$28,346
2639 DR MARTIN LUTHER KING JR ST	St. Petersburg	Medical Office Building	\$1,350,000	7,073	1952	\$26,892
4820 PARK BLVD	Pinellas Park	Medical Office Building	\$1,345,000	12,484	1955	\$28,224
7000 4TH ST N	St. Petersburg	Medical Office Building	\$1,345,000	7,861	1973	\$28,286
7530 4TH ST N	St. Petersburg	Medical Office Building	\$1,340,000	2,824	1980	\$26,316

Address	City	Type	Market Value	Sq Ft	Year	Annual Tax
6025 4TH ST N	St. Petersburg	Medical Office Building	\$1,340,000	3,600	1981	\$28,007
32615 US HIGHWAY 19 N	Palm Harbor	Medical Office Building	\$1,330,500	10,003	1989	\$24,019
6101 CENTRAL AVE	St. Petersburg	Medical Office Building	\$1,330,000	8,040	1954	\$27,569
539 PASADENA AVE S	St. Petersburg	Medical Office Building	\$1,330,000	8,987	1986	\$26,493
1608 GULF TO BAY BLVD	Clearwater	Medical Office Building	\$1,330,000	4,882	2014	\$25,738
12020 SEMINOLE BLVD	Seminole	Medical Office Building	\$1,330,000	16,419	1981	\$23,837
2200 16TH ST N	St. Petersburg	Medical Office Building	\$1,325,000	6,186	1979	\$27,708
5798 38TH AVE N	St. Petersburg	Medical Office Building	\$1,320,000	4,052	2010	\$27,429
2701 PARK DR	Clearwater	Medical Office Building	\$1,310,000	10,634	1975	\$23,341
601 S BELCHER RD	Clearwater	Medical Office Building	\$1,300,000	6,978	1989	\$25,158
1825 SUNSET POINT RD	Clearwater	Medical Office Building	\$1,290,000	7,976	1974	\$24,964
5051 66TH ST N	St. Petersburg	Medical Office Building	\$1,290,000	9,721	1982	\$31,744

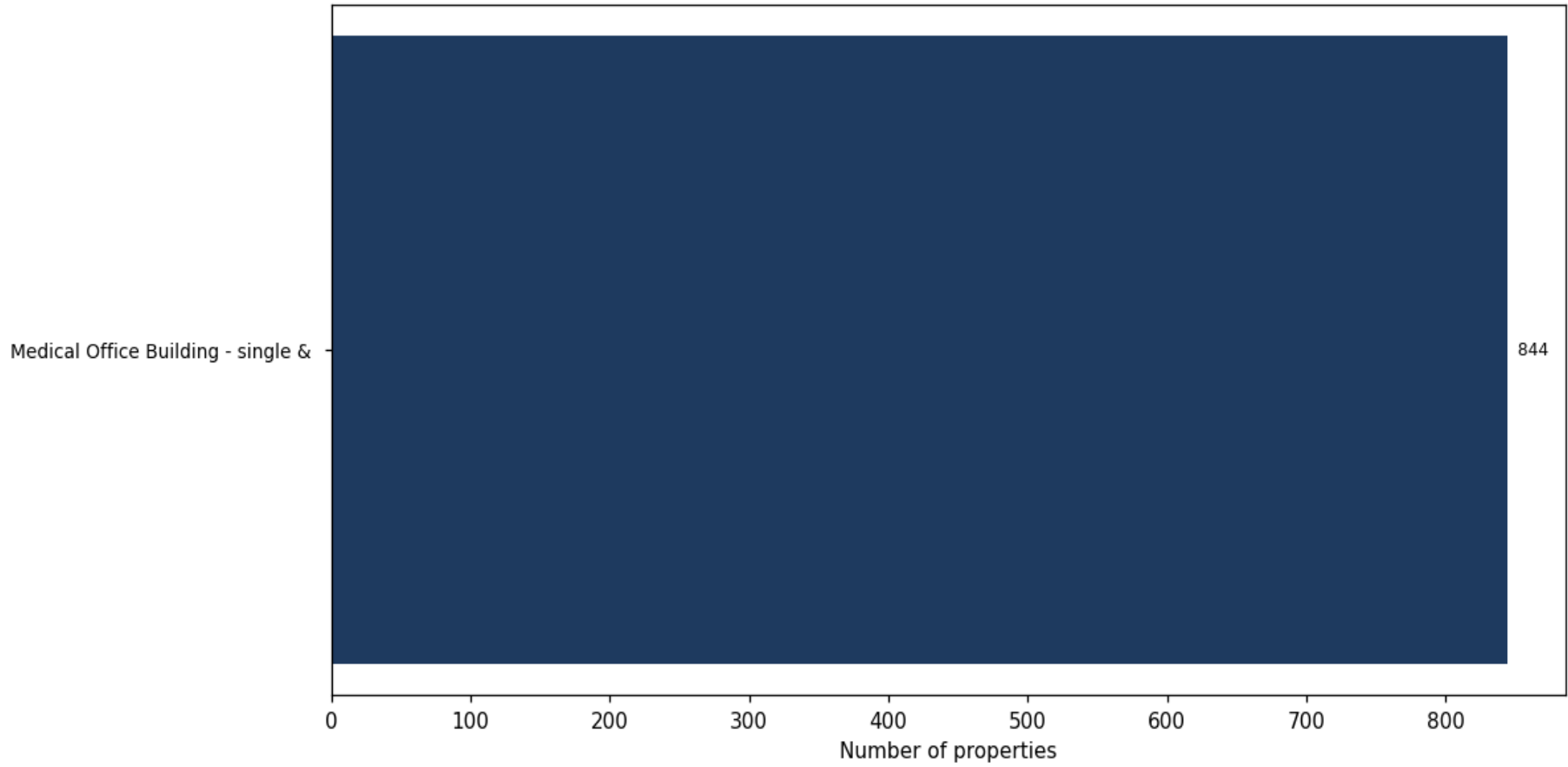
**Market value distribution (n=841, top 1% trimmed for readability)**



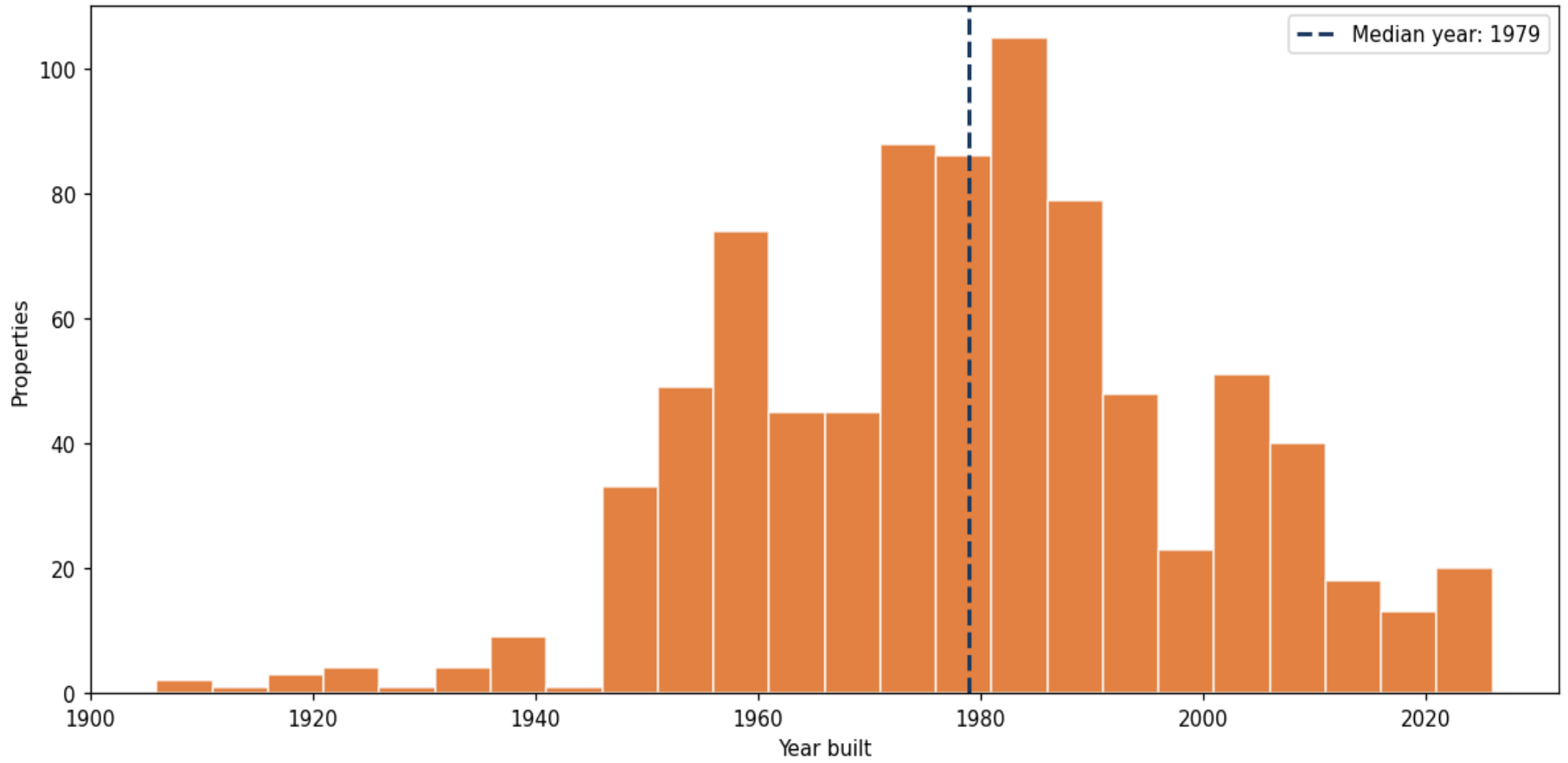
**Building size vs. market value (n=823, outliers trimmed)**



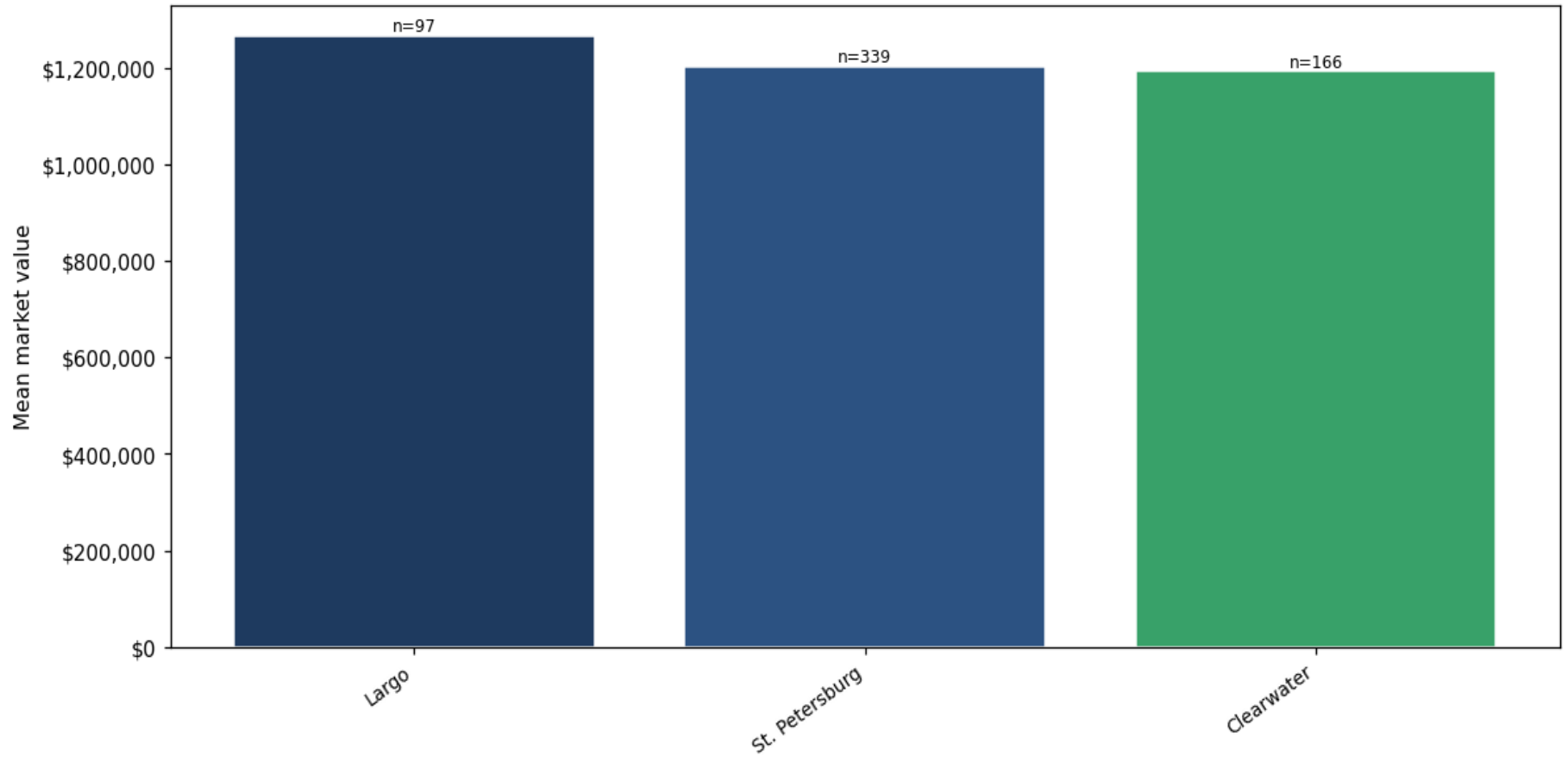
### Top property types by count



**Year built distribution (5-year buckets)**



**Mean market value by city (cities with  $\geq 50$  matches)**



**Market value vs. assessed value (gap = untaxed appreciation)**

