

Pinellas Property Market Report

2,874 matching properties • June 02, 2026

Filters applied	Headline numbers
Property type: Manufactured Home (On Individually Owned Lot)	Properties matched: 2,874
	Median market value: \$130,113
	Mean market value: \$138,511
	Min / Max: \$21,151 / \$672,009
	Mean square footage: 1,072

Top 200 properties by market value

Address	City	Type	Market Value	Sq Ft	Year	Annual Tax
14555 71ST ST	Largo	Manufactured Home (On In	\$672,009	4,540	2009	\$12,970
273 PHILADELPHIA BLVD # 47	Palm Harbor	Manufactured Home (On In	\$483,487	1,588	2023	\$8,441
297 COLONIAL BLVD # 4	Palm Harbor	Manufactured Home (On In	\$461,570	1,488	2024	\$8,078
1316 RICHLAND AVE	Dunedin	Manufactured Home (On In	\$444,368	470	1957	\$8,298
252 PHILADELPHIA BLVD # 54	Palm Harbor	Manufactured Home (On In	\$437,801	2,168	2019	\$7,658
304 COLONIAL BLVD # 6	Palm Harbor	Manufactured Home (On In	\$400,290	1,324	2014	\$6,998
293 COLONIAL BLVD # 3	Palm Harbor	Manufactured Home (On In	\$395,797	1,572	2005	\$6,914
270 PHILADELPHIA BLVD # 49	Palm Harbor	Manufactured Home (On In	\$387,116	1,456	1998	\$6,808
6132 109TH AVE	Pinellas Park	Manufactured Home (On In	\$385,266	1,440	1974	\$6,393
156 COLONIAL BLVD # 15	Palm Harbor	Manufactured Home (On In	\$383,964	2,077	2022	\$6,490
12816 WILD ACRES RD	Largo	Manufactured Home (On In	\$383,794	1,566	2019	\$7,188
6720 69TH AVE N	Pinellas Park	Manufactured Home (On In	\$383,082	1,294	1990	\$7,649
4185 74TH ST N # B	St. Petersburg	Manufactured Home (On In	\$380,027	1,760	1998	\$7,964

Address	City	Type	Market Value	Sq Ft	Year	Annual Tax
493 RIVER VILLAGE DR	Tarpon Springs	Manufactured Home (On In	\$371,238	1,740	2022	\$6,498
320 COLONIAL BLVD # 10	Palm Harbor	Manufactured Home (On In	\$370,362	1,952	1971	\$6,461
113 FREEDOM CT # 26	Palm Harbor	Manufactured Home (On In	\$365,786	2,022	2022	\$6,198
247 COLONIAL BLVD # 3	Palm Harbor	Manufactured Home (On In	\$361,356	1,870	2003	\$6,199
138 BLUE MARLIN DR	Oldsmar	Manufactured Home (On In	\$360,940	1,364	2016	\$6,004
273 COLONIAL BLVD # 12	Palm Harbor	Manufactured Home (On In	\$359,745	1,742	1968	\$6,306
44 PLYMOUTH CT # 36	Palm Harbor	Manufactured Home (On In	\$358,659	1,620	2024	\$5,974
6100 105TH AVE	Pinellas Park	Manufactured Home (On In	\$358,205	2,900	2017	\$6,258
526 CANAL WAY	Oldsmar	Manufactured Home (On In	\$356,051	2,707	1997	\$5,640
68 HARBOR WAY # 2	Palm Harbor	Manufactured Home (On In	\$340,868	1,485	2008	\$5,928
64 HARBOR WAY # 3	Palm Harbor	Manufactured Home (On In	\$339,632	1,587	2003	\$5,876
3431 52ND AVE N	St. Petersburg	Manufactured Home (On In	\$338,811	1,620	2004	\$6,671
41 WILLIAM PENN WAY # 12	Palm Harbor	Manufactured Home (On In	\$335,313	1,323	2024	\$5,599
5145 75TH ST N	St. Petersburg	Manufactured Home (On In	\$332,840	2,100	2003	\$7,552
253 PHILADELPHIA BLVD # 42	Palm Harbor	Manufactured Home (On In	\$321,676	1,231	2024	\$5,352
140 INDEPENDENCE AVE # 11	Palm Harbor	Manufactured Home (On In	\$320,694	1,860	2007	\$5,241
507 RIVERVIEW LN	Tarpon Springs	Manufactured Home (On In	\$320,658	1,330	2000	\$5,525
12436 CROSS ST	Pinellas Park	Manufactured Home (On In	\$320,508	2,208	2000	\$5,732
256 PHILADELPHIA BLVD # 53	Palm Harbor	Manufactured Home (On In	\$320,000	1,824	2002	\$3,334
50 VILLAGE GREEN WAY # 6	Palm Harbor	Manufactured Home (On In	\$318,441	1,832	2010	\$5,323
6621 50TH ST N	Pinellas Park	Manufactured Home (On In	\$311,896	2,280	2022	\$6,062
267 INDEPENDENCE AVE # 16	Palm Harbor	Manufactured Home (On In	\$310,767	1,620	2024	\$5,254
271 INDEPENDENCE AVE # 15	Palm Harbor	Manufactured Home (On In	\$309,505	1,620	2022	\$5,278
197 CONCORD LN # 29	Palm Harbor	Manufactured Home (On In	\$309,202	2,214	2018	\$5,212
5568 40TH ST N	St. Petersburg	Manufactured Home (On In	\$308,812	1,566	2016	\$6,310

Address	City	Type	Market Value	Sq Ft	Year	Annual Tax
3203 ROXBOROUGH AVE	Clearwater	Manufactured Home (On In	\$308,694	1,560	2005	\$5,705
3074 HURON AVE	Oldsmar	Manufactured Home (On In	\$308,688	2,103	2006	\$4,753
525 CANAL WAY	Oldsmar	Manufactured Home (On In	\$308,271	1,589	2011	\$4,400
499 RIVER VILLAGE DR	Tarpon Springs	Manufactured Home (On In	\$304,929	1,440	2020	\$5,199
6720 70TH AVE N	Pinellas Park	Manufactured Home (On In	\$302,688	2,108	2024	\$5,956
5179 75TH ST N	St. Petersburg	Manufactured Home (On In	\$300,364	1,200	1982	\$6,754
821 RIVERVIEW LN	Tarpon Springs	Manufactured Home (On In	\$299,920	1,484	1968	\$4,857
7470 46TH AVE N	St. Petersburg	Manufactured Home (On In	\$299,403	1,894	1970	\$6,950
177 REVERE CT # 28	Palm Harbor	Manufactured Home (On In	\$298,940	2,421	2000	\$5,002
6066 84TH AVE	Pinellas Park	Manufactured Home (On In	\$296,590	1,728	1968	\$7,494
607 CANAL WAY	Oldsmar	Manufactured Home (On In	\$295,330	1,483	1998	\$4,907
519 CANAL WAY	Oldsmar	Manufactured Home (On In	\$294,923	1,745	1996	\$4,708
53 PELICAN DR S	Oldsmar	Manufactured Home (On In	\$294,530	1,511	2018	\$4,929
276 SALEM AVE # 9	Palm Harbor	Manufactured Home (On In	\$293,666	1,640	2022	\$4,961
7395 121ST WAY	Seminole	Manufactured Home (On In	\$293,498	1,920	2015	\$4,909
3351 ROXBOROUGH AVE	Clearwater	Manufactured Home (On In	\$290,445	2,280	2004	\$5,617
34 REVERE WAY # 4	Palm Harbor	Manufactured Home (On In	\$290,308	1,530	2017	\$4,858
3644 QUAIL FOREST DR	Tarpon Springs	Manufactured Home (On In	\$290,227	672	1960	\$4,496
6715 68TH AVE N	Pinellas Park	Manufactured Home (On In	\$289,762	1,425	2018	\$5,780
436 SAILFISH BLVD	Oldsmar	Manufactured Home (On In	\$289,420	1,404	2023	\$4,862
205 PHILADELPHIA BLVD # 28	Palm Harbor	Manufactured Home (On In	\$286,220	1,522	1997	\$4,835
316 COLONIAL BLVD # 9	Palm Harbor	Manufactured Home (On In	\$284,450	1,320	1970	\$5,022
296 SALEM AVE # 5	Palm Harbor	Manufactured Home (On In	\$284,142	1,664	2013	\$4,958
12373 TREE ST	Pinellas Park	Manufactured Home (On In	\$283,958	2,108	2010	\$4,946
3343 ROXBOROUGH AVE	Clearwater	Manufactured Home (On In	\$283,789	2,052	2002	\$5,282

Address	City	Type	Market Value	Sq Ft	Year	Annual Tax
1823 CARDINAL DR S	Largo	Manufactured Home (On In	\$282,488	2,194	2008	\$6,194
6324 145TH AVE N	Clearwater	Manufactured Home (On In	\$282,158	1,412	1970	\$3,661
275 COLONIAL BLVD # 13	Palm Harbor	Manufactured Home (On In	\$281,206	1,248	1972	\$5,050
7665 64TH ST N	Pinellas Park	Manufactured Home (On In	\$281,007	2,134	2000	\$6,603
123 PHILADELPHIA BLVD # 7	Palm Harbor	Manufactured Home (On In	\$279,942	1,622	2012	\$4,904
49TH WAY N	Pinellas Park	Manufactured Home (On In	\$279,703	1,488	2017	\$5,378
1023 BELCHER RD	Palm Harbor	Manufactured Home (On In	\$279,257	1,200	1977	\$5,024
2449 HIGHLAND ACRES DR	Clearwater	Manufactured Home (On In	\$277,930	2,188	1973	\$4,624
521 CANAL WAY	Oldsmar	Manufactured Home (On In	\$277,412	2,030	2003	\$4,417
54 WASHINGTON CT # 30	Palm Harbor	Manufactured Home (On In	\$277,332	1,431	2021	\$4,654
229 LARK DR	Largo	Manufactured Home (On In	\$277,146	1,488	2016	\$4,565
6140 84TH AVE	Pinellas Park	Manufactured Home (On In	\$276,354	2,108	2002	\$5,979
285 COLONIAL BLVD # 1	Palm Harbor	Manufactured Home (On In	\$276,098	1,344	1973	\$4,960
616 LAKE WAY	Oldsmar	Manufactured Home (On In	\$275,283	1,583	1999	\$4,573
271 COLONIAL BLVD # 11	Palm Harbor	Manufactured Home (On In	\$274,517	1,296	1981	\$4,927
272 PHILADELPHIA BLVD # 48	Palm Harbor	Manufactured Home (On In	\$274,344	1,540	1969	\$4,919
14454 VALENTINE DR	Largo	Manufactured Home (On In	\$273,642	1,395	2012	\$5,006
312 COLONIAL BLVD # 8	Palm Harbor	Manufactured Home (On In	\$273,630	1,152	1973	\$5,453
332 COLONIAL BLVD	Palm Harbor	Manufactured Home (On In	\$273,200	1,380	1978	\$4,904
115 PHILADELPHIA BLVD # 5	Palm Harbor	Manufactured Home (On In	\$272,878	2,152	2003	\$4,587
500 BRAGINTON ST	Clearwater	Manufactured Home (On In	\$272,792	1,344	2002	\$4,472
301 COLONIAL BLVD # 5	Palm Harbor	Manufactured Home (On In	\$272,008	1,680	1971	\$4,891
289 COLONIAL BLVD # 2	Palm Harbor	Manufactured Home (On In	\$271,736	1,248	1976	\$4,867
7262 121ST WAY N	Seminole	Manufactured Home (On In	\$271,068	1,456	2015	\$3,997
328 COLONIAL BLVD # 12	Palm Harbor	Manufactured Home (On In	\$271,026	1,248	1971	\$4,846

Address	City	Type	Market Value	Sq Ft	Year	Annual Tax
6141 84TH AVE	Pinellas Park	Manufactured Home (On In	\$270,892	2,156	2002	\$5,861
497 RIVER VILLAGE DR	Tarpon Springs	Manufactured Home (On In	\$269,925	1,770	2003	\$4,594
6704 71ST AVE N	Pinellas Park	Manufactured Home (On In	\$269,535	1,512	2002	\$4,977
334 COLONIAL BLVD	Palm Harbor	Manufactured Home (On In	\$268,669	1,468	1979	\$4,794
500 COBIA WAY	Oldsmar	Manufactured Home (On In	\$268,205	1,480	1997	\$4,494
199 GULF WAY	Oldsmar	Manufactured Home (On In	\$267,833	1,296	2011	\$4,457
175 INDEPENDENCE AVE # 26	Palm Harbor	Manufactured Home (On In	\$267,714	1,389	2012	\$4,485
308 COLONIAL BLVD # 7	Palm Harbor	Manufactured Home (On In	\$266,206	1,152	1973	\$4,771
145 NEW ENGLAND AVE # 18	Palm Harbor	Manufactured Home (On In	\$265,562	1,577	1997	\$4,387
56 WILLIAM PENN WAY # 7	Palm Harbor	Manufactured Home (On In	\$265,532	1,785	2007	\$4,437
14001 59TH ST N	Clearwater	Manufactured Home (On In	\$265,530	2,040	2003	\$4,654
287 ARISTIDES ST	Dunedin	Manufactured Home (On In	\$265,207	1,378	1962	\$5,080
269 PHILADELPHIA BLVD # 46	Palm Harbor	Manufactured Home (On In	\$263,829	1,128	1971	\$4,748
1030 HIGHLAND BLVD	Palm Harbor	Manufactured Home (On In	\$263,489	1,848	1975	\$4,725
117 FREEDOM CT # 25	Palm Harbor	Manufactured Home (On In	\$263,322	1,508	2015	\$4,415
324 COLONIAL BLVD # 11	Palm Harbor	Manufactured Home (On In	\$262,950	1,344	1971	\$4,709
1271 NEW YORK AVE	Dunedin	Manufactured Home (On In	\$262,550	430	1958	\$4,832
273 DIOGENES ST	Dunedin	Manufactured Home (On In	\$260,792	1,404	2021	\$4,722
213 PHILADELPHIA BLVD # 30	Palm Harbor	Manufactured Home (On In	\$259,870	1,323	2016	\$4,409
801 RIVERVIEW LN	Tarpon Springs	Manufactured Home (On In	\$259,835	960	2017	\$4,477
44 HARBOR WAY # 7	Palm Harbor	Manufactured Home (On In	\$258,193	1,152	2020	\$4,329
116 PHILADELPHIA BLVD # 8	Palm Harbor	Manufactured Home (On In	\$257,996	1,296	1999	\$4,348
313 ARISTIDES ST	Dunedin	Manufactured Home (On In	\$257,113	1,612	2015	\$4,646
1307 NEW YORK AVE	Dunedin	Manufactured Home (On In	\$256,202	368	1955	\$4,777
6350 144TH AVE N	Clearwater	Manufactured Home (On In	\$256,060	1,790	2010	\$3,848

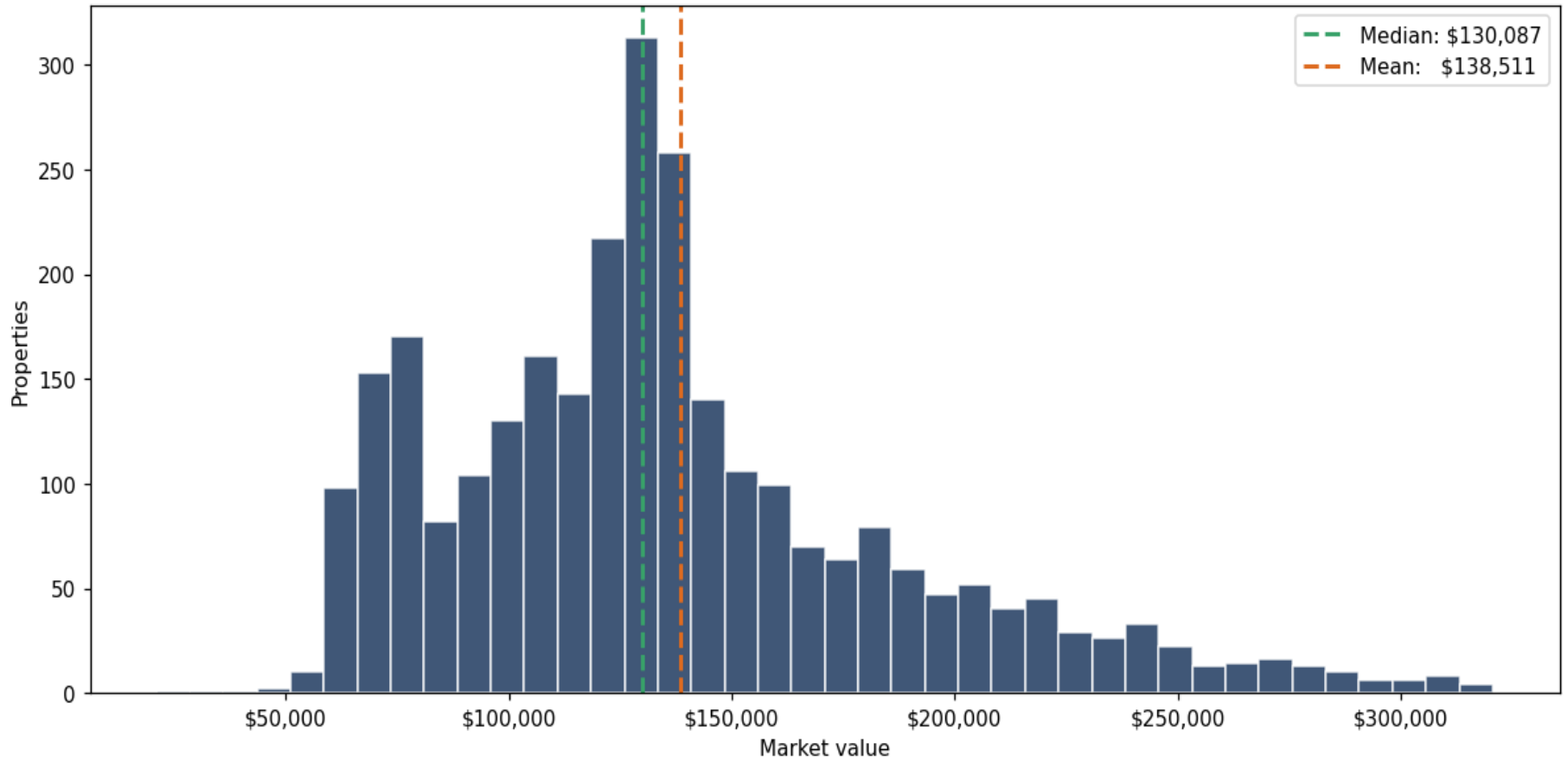
Address	City	Type	Market Value	Sq Ft	Year	Annual Tax
242 PHILADELPHIA BLVD # 57	Palm Harbor	Manufactured Home (On In	\$256,051	1,125	1971	\$4,508
48 WILLIAM PENN WAY # 5	Palm Harbor	Manufactured Home (On In	\$255,955	1,386	2005	\$4,295
217 LARK DR	Largo	Manufactured Home (On In	\$255,687	1,512	2017	\$4,194
3221 ROXBOROUGH AVE	Clearwater	Manufactured Home (On In	\$254,747	1,152	2023	\$4,655
255 PELICAN DR N	Oldsmar	Manufactured Home (On In	\$254,628	1,573	2003	\$4,305
6074 109TH TER	Pinellas Park	Manufactured Home (On In	\$253,830	1,458	2022	\$4,370
6725 69TH AVE N	Pinellas Park	Manufactured Home (On In	\$252,300	1,056	1985	\$5,062
147 GULL AIRE BLVD	Oldsmar	Manufactured Home (On In	\$251,934	1,188	2012	\$4,187
523 CANAL WAY	Oldsmar	Manufactured Home (On In	\$251,645	1,799	2001	\$3,953
5007 75TH ST N	St. Petersburg	Manufactured Home (On In	\$251,594	1,736	2003	\$5,310
48 CONCORD LN # 8	Palm Harbor	Manufactured Home (On In	\$251,128	1,688	2002	\$4,223
12812 WILD ACRES RD	Largo	Manufactured Home (On In	\$250,417	912	2015	\$4,773
12300 CROSS ST	Pinellas Park	Manufactured Home (On In	\$250,409	2,163	1999	\$4,484
122 COLONIAL BLVD # 6	Palm Harbor	Manufactured Home (On In	\$250,190	1,829	2003	\$4,233
13634 61ST WAY N	Clearwater	Manufactured Home (On In	\$250,084	1,834	2019	\$4,370
312 ARISTIDES ST	Dunedin	Manufactured Home (On In	\$250,073	1,620	2007	\$4,531
7925 50TH AVE N	St. Petersburg	Manufactured Home (On In	\$249,947	1,404	2018	\$5,163
6196 136TH AVE N	Clearwater	Manufactured Home (On In	\$249,662	2,108	2008	\$4,759
33 WILLIAM PENN WAY # 14	Palm Harbor	Manufactured Home (On In	\$248,357	1,800	2004	\$4,170
29250 US HIGHWAY 19 N # 55	Clearwater	Manufactured Home (On In	\$248,020	1,860	2022	\$4,048
197 PHILADELPHIA BLVD # 26	Palm Harbor	Manufactured Home (On In	\$247,842	1,636	2004	\$4,156
6152 140TH TER N	Clearwater	Manufactured Home (On In	\$247,625	2,108	2003	\$4,320
1335 MILTON ST	Clearwater	Manufactured Home (On In	\$246,936	1,225	1969	\$4,298
8220 60TH ST N	Pinellas Park	Manufactured Home (On In	\$246,700	1,207	1998	\$5,384
13455 60TH ST N	Clearwater	Manufactured Home (On In	\$246,633	1,132	1969	\$4,067

Address	City	Type	Market Value	Sq Ft	Year	Annual Tax
157 COLONIAL BLVD # 34	Palm Harbor	Manufactured Home (On In	\$246,402	1,432	2004	\$4,105
505 CANAL WAY	Oldsmar	Manufactured Home (On In	\$245,988	1,662	1999	\$4,053
137 LAKE TARPON DR # 18	Palm Harbor	Manufactured Home (On In	\$245,980	1,844	2001	\$4,139
12573 LAND ST	Pinellas Park	Manufactured Home (On In	\$245,604	1,323	2017	\$4,378
180 PHILADELPHIA BLVD # 6	Palm Harbor	Manufactured Home (On In	\$245,491	1,620	2005	\$4,108
623 PELICAN DR S	Oldsmar	Manufactured Home (On In	\$245,468	1,749	1995	\$4,110
339 CANAL WAY	Oldsmar	Manufactured Home (On In	\$244,991	1,323	2002	\$4,078
5040 70TH AVE N	Pinellas Park	Manufactured Home (On In	\$244,939	2,394	1986	\$4,696
134 COLONIAL BLVD # 9	Palm Harbor	Manufactured Home (On In	\$244,769	1,386	2005	\$4,123
161 COLONIAL BLVD # 33	Palm Harbor	Manufactured Home (On In	\$244,742	1,555	1995	\$4,096
287 PELICAN DR N	Oldsmar	Manufactured Home (On In	\$244,549	1,619	2012	\$4,088
12822 WILD ACRES RD	Largo	Manufactured Home (On In	\$244,367	1,152	1970	\$5,235
7972 51ST AVE N	St. Petersburg	Manufactured Home (On In	\$244,024	1,440	2000	\$5,188
6072 137TH TER N	Clearwater	Manufactured Home (On In	\$243,893	1,632	1987	\$4,229
6160 105TH AVE	Pinellas Park	Manufactured Home (On In	\$243,751	1,404	2022	\$4,172
6540 50TH ST N	Pinellas Park	Manufactured Home (On In	\$242,469	1,484	2015	\$4,685
507 CANAL WAY	Oldsmar	Manufactured Home (On In	\$242,433	1,500	2002	\$3,997
6114 137TH TER N	Clearwater	Manufactured Home (On In	\$242,256	1,404	2017	\$4,241
320 ARISTOTLE ST	Dunedin	Manufactured Home (On In	\$242,175	1,440	2008	\$4,553
3760 45TH AVE N	St. Petersburg	Manufactured Home (On In	\$241,760	1,056	2022	\$5,127
213 LAKE TARPON DR # 25	Palm Harbor	Manufactured Home (On In	\$241,680	1,548	2007	\$4,086
613 COBIA WAY	Oldsmar	Manufactured Home (On In	\$241,393	1,556	1997	\$4,016
153 NEW ENGLAND AVE # 41	Palm Harbor	Manufactured Home (On In	\$241,159	1,744	1995	\$4,054
185 COLONIAL BLVD # 25	Palm Harbor	Manufactured Home (On In	\$240,736	1,432	2004	\$4,031
14251 63RD ST N	Clearwater	Manufactured Home (On In	\$240,465	1,380	1981	\$3,376

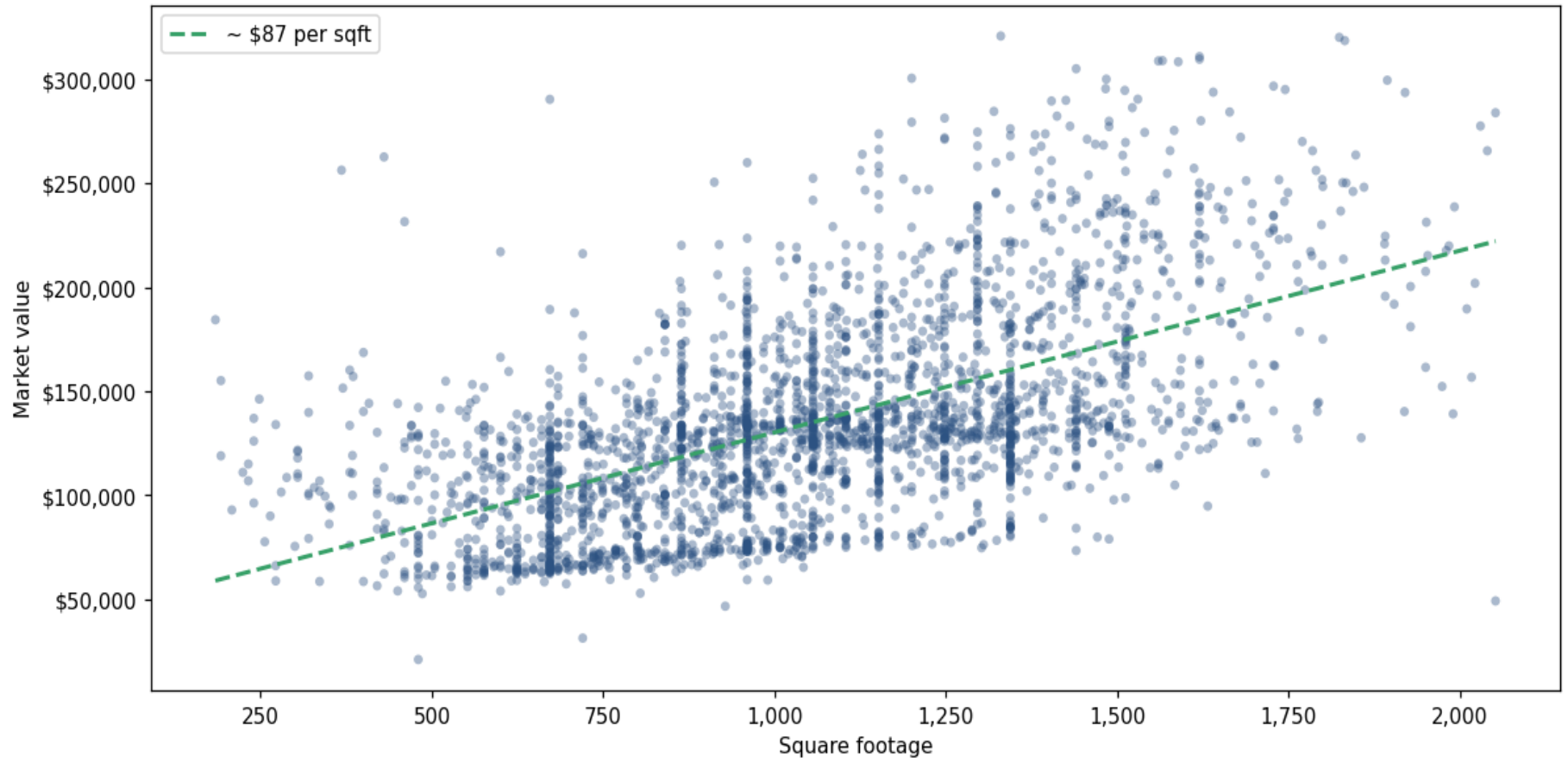
Address	City	Type	Market Value	Sq Ft	Year	Annual Tax
513 RIVERVIEW LN	Tarpon Springs	Manufactured Home (On In	\$240,433	1,494	1994	\$4,160
509 CANAL WAY	Oldsmar	Manufactured Home (On In	\$240,077	1,697	1996	\$3,958
512 CANAL WAY	Oldsmar	Manufactured Home (On In	\$239,337	1,484	1999	\$3,745
166 NEW ENGLAND AVE # 17	Palm Harbor	Manufactured Home (On In	\$239,139	1,485	2002	\$4,015
640 RIVER VILLAGE DR	Tarpon Springs	Manufactured Home (On In	\$238,957	1,296	2006	\$4,124
239 COLONIAL BLVD # 1	Palm Harbor	Manufactured Home (On In	\$238,881	1,296	1971	\$4,280
149 LAKE TARPON DR # 15	Palm Harbor	Manufactured Home (On In	\$238,819	1,620	2011	\$4,018
6078 109TH AVE	Pinellas Park	Manufactured Home (On In	\$238,688	1,620	2018	\$4,261
38 VILLAGE GREEN WAY # 3	Palm Harbor	Manufactured Home (On In	\$238,642	1,383	2006	\$3,994
4523 68TH ST N	St. Petersburg	Manufactured Home (On In	\$238,547	1,992	2004	\$4,589
12275 CROSS ST	Pinellas Park	Manufactured Home (On In	\$238,416	1,647	2017	\$4,264
13001 ROBIN LN	Largo	Manufactured Home (On In	\$238,043	1,512	2022	\$4,034
55 WASHINGTON CT # 22	Palm Harbor	Manufactured Home (On In	\$237,737	1,152	2011	\$3,999
6163 106TH AVE N	Pinellas Park	Manufactured Home (On In	\$237,595	1,344	2020	\$4,150
6301 143RD AVE N	Clearwater	Manufactured Home (On In	\$237,521	1,296	2004	\$3,513
10544 58TH ST	Pinellas Park	Manufactured Home (On In	\$237,504	2,079	1993	\$4,374
269 COLONIAL BLVD # 10	Palm Harbor	Manufactured Home (On In	\$237,232	1,654	1987	\$4,208
145 BLUE MARLIN DR	Oldsmar	Manufactured Home (On In	\$236,648	1,504	2006	\$3,897
296 INDEPENDENCE AVE # 2	Palm Harbor	Manufactured Home (On In	\$236,555	1,826	2002	\$3,913
5023 75TH ST N	St. Petersburg	Manufactured Home (On In	\$236,531	1,620	2003	\$5,078
6340 144TH AVE N	Clearwater	Manufactured Home (On In	\$236,113	1,512	1999	\$3,836
7305 44TH AVE N	St. Petersburg	Manufactured Home (On In	\$235,991	1,494	1997	\$4,873
514 CANAL WAY	Oldsmar	Manufactured Home (On In	\$235,793	1,475	1999	\$3,691
36 DRURY LN	Tarpon Springs	Manufactured Home (On In	\$235,527	1,482	2023	\$4,168
5929 141ST TER N	Clearwater	Manufactured Home (On In	\$235,191	1,512	2020	\$4,142

Address	City	Type	Market Value	Sq Ft	Year	Annual Tax
110 COLONIAL BLVD # 3	Palm Harbor	Manufactured Home (On In	\$234,728	1,522	2002	\$3,933
204 LARK DR	Largo	Manufactured Home (On In	\$234,632	1,296	2018	\$3,793
6043 113TH AVE	Pinellas Park	Manufactured Home (On In	\$234,485	1,728	1995	\$4,038
515 CANAL WAY	Oldsmar	Manufactured Home (On In	\$234,374	1,475	1999	\$3,665
330 ARCHIMEDES ST	Dunedin	Manufactured Home (On In	\$234,200	1,728	2002	\$3,700
244 PHILADELPHIA BLVD # 56	Palm Harbor	Manufactured Home (On In	\$232,909	1,420	1990	\$5,181
212 LARK DR	Largo	Manufactured Home (On In	\$232,546	1,656	1990	\$3,694
524 CANAL WAY	Oldsmar	Manufactured Home (On In	\$231,875	1,696	1997	\$3,659
256 PELICAN DR N	Oldsmar	Manufactured Home (On In	\$231,596	1,296	2003	\$3,831
515 RIVERVIEW LN	Tarpon Springs	Manufactured Home (On In	\$231,459	460	1964	\$3,911
618 PELICAN DR S	Oldsmar	Manufactured Home (On In	\$231,189	1,951	1996	\$3,747
15125 WESTMINISTER AVE	Clearwater	Manufactured Home (On In	\$231,064	1,620	1999	\$4,589

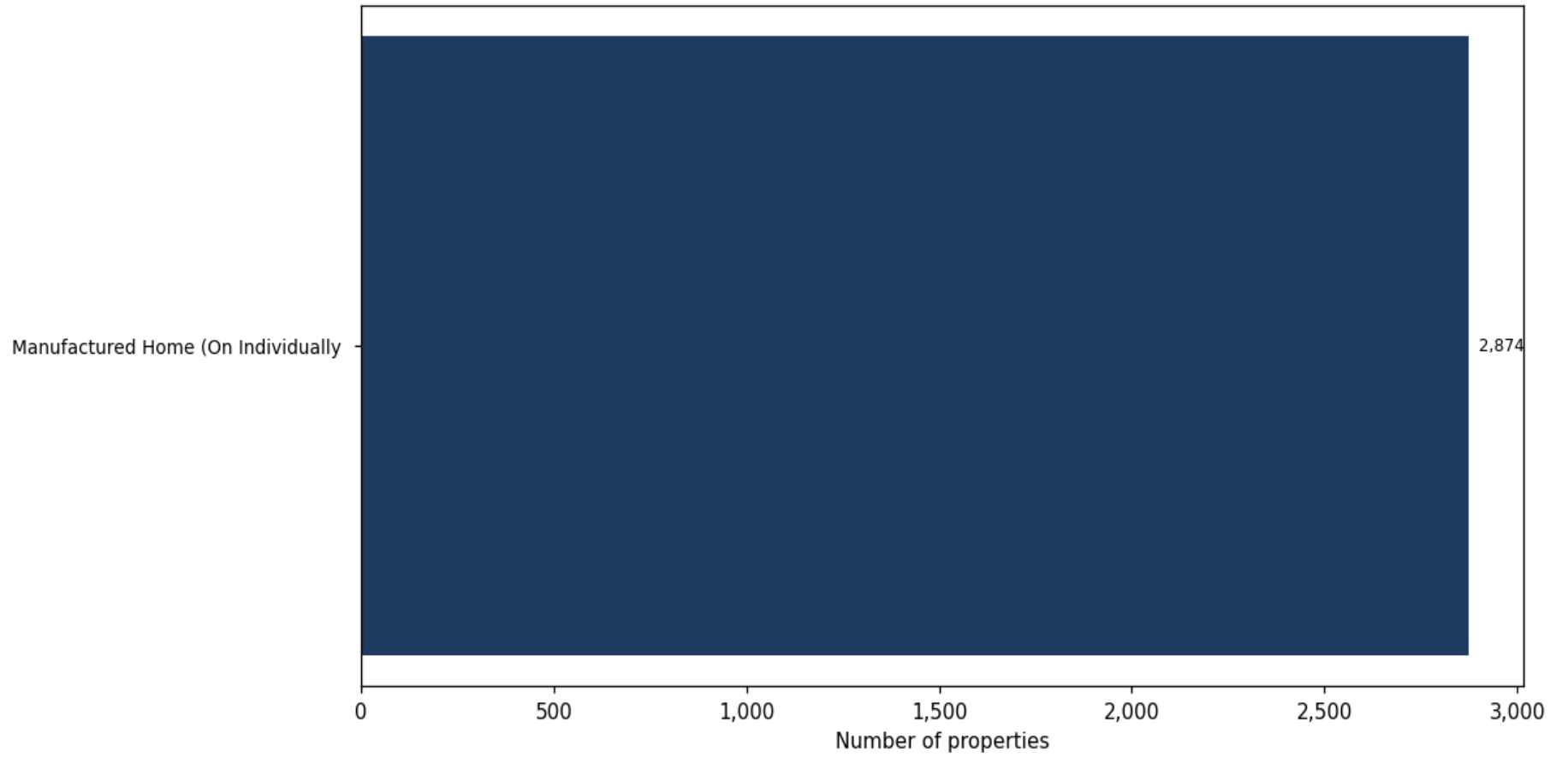
Market value distribution (n=2,874, top 1% trimmed for readability)



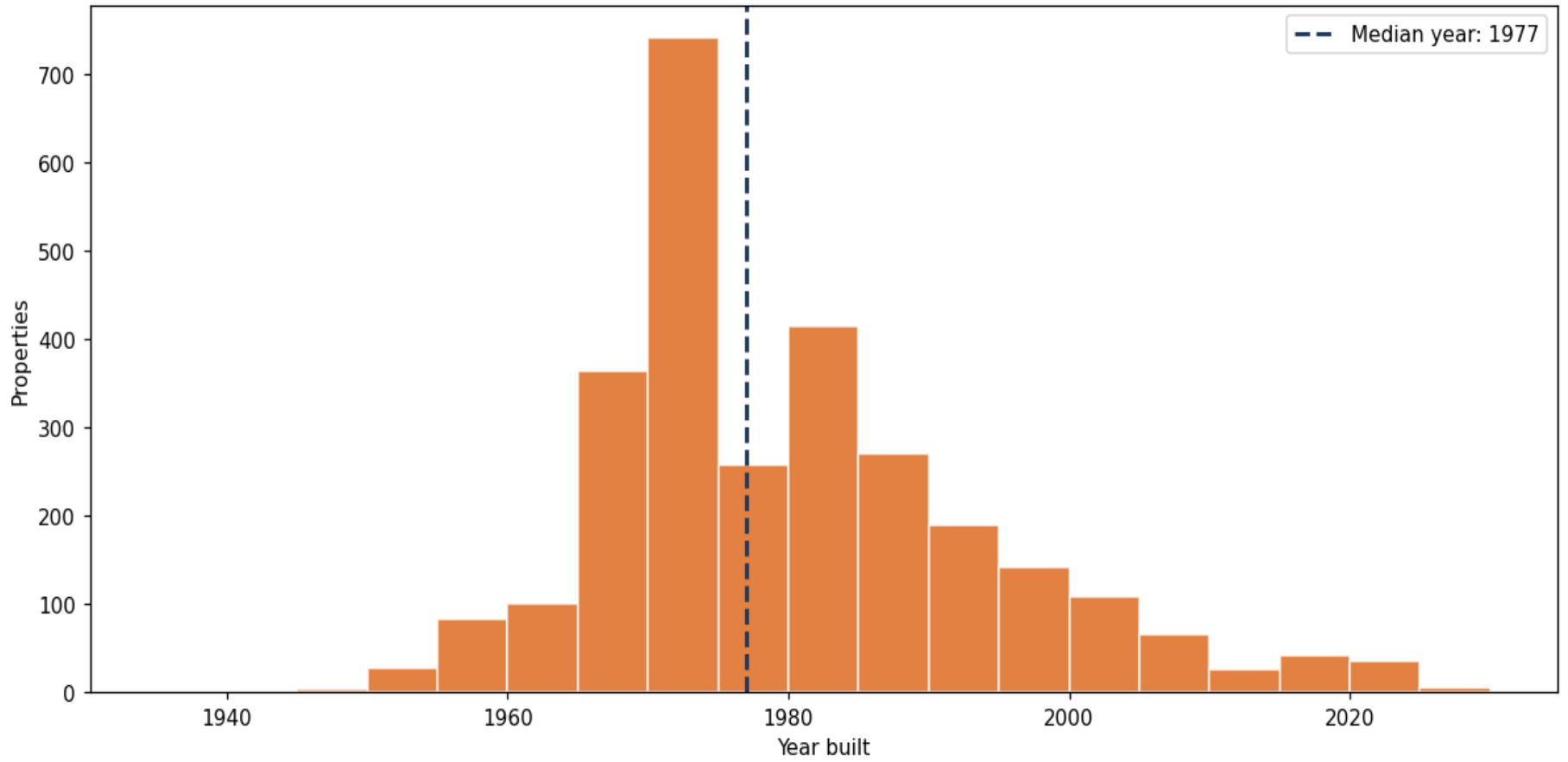
Building size vs. market value (n=2,815, outliers trimmed)



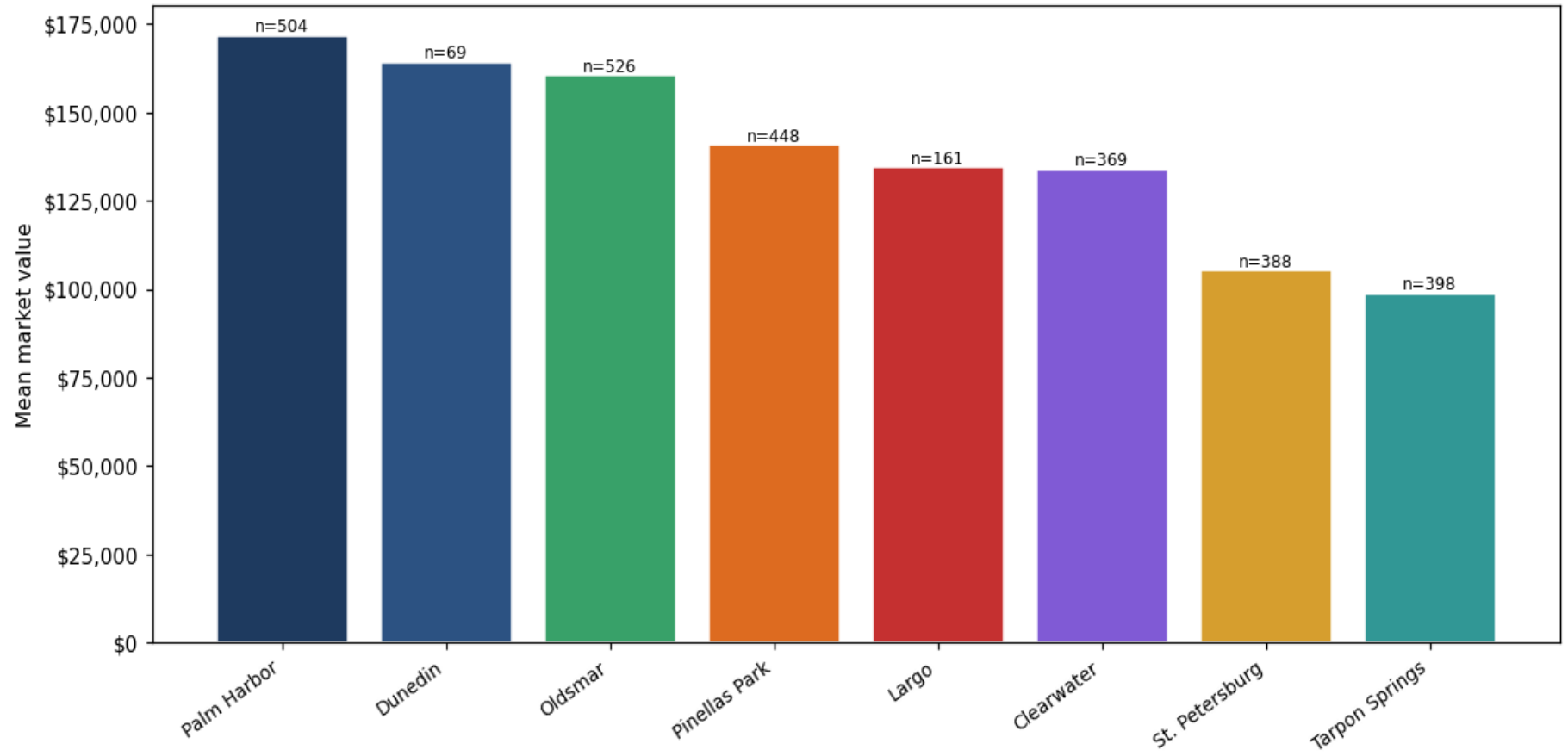
Top property types by count



Year built distribution (5-year buckets)



Mean market value by city (cities with ≥ 50 matches)



Market value vs. assessed value (gap = untaxed appreciation)

