

Pinellas Property Market Report

244 matching properties • May 30, 2026

Filters applied	Headline numbers
Property type: Industrial Not Classified Elsewhere	Properties matched: 244
	Median market value: \$565,888
	Mean market value: \$854,321
	Min / Max: \$85,938 / \$13,302,976
	Mean square footage: 7,245

Top 200 properties by market value

Address	City	Type	Market Value	Sq Ft	Year	Annual Tax
180 RACETRACK RD N	Oldsmar	Industrial Not Classifie	\$13,302,976	187,690	1980	\$219,928
5390 150TH AVE N	Largo	Industrial Not Classifie	\$4,910,143	27,720	1975	\$103,422
855 28TH ST S	St. Petersburg	Industrial Not Classifie	\$4,419,791	39,880	1988	\$84,204
PARK BLVD	Pinellas Park	Industrial Not Classifie	\$4,309,288	9,200	2006	\$90,754
8250 62ND ST N	Pinellas Park	Industrial Not Classifie	\$3,835,443	54,750	1961	\$72,189
PARK BLVD	Pinellas Park	Industrial Not Classifie	\$3,091,425	28,840	2006	\$55,005
600 PACKARD CT	Safety Harbor	Industrial Not Classifie	\$2,881,779	52,110	1966	\$44,697
6056 ULMERTON RD	Clearwater	Industrial Not Classifie	\$2,831,329	22,214	1963	\$52,897
13770 50TH WAY N	Largo	Industrial Not Classifie	\$2,471,238	19,980	2001	\$42,092
12812 60TH ST N	Pinellas Park	Industrial Not Classifie	\$2,374,747	113,372	1964	\$49,057
9401 BAY PINES BLVD	St. Petersburg	Industrial Not Classifie	\$2,337,563	10,000	1959	\$46,980
918 1ST AVE S	St. Petersburg	Industrial Not Classifie	\$2,307,537	2,000	1980	\$47,853
3560 126TH AVE N	Pinellas Park	Industrial Not Classifie	\$2,240,014	26,250	1983	\$44,276

Address	City	Type	Market Value	Sq Ft	Year	Annual Tax
1401 LAKE AVE SE	Largo	Industrial Not Classifie	\$2,189,502	7,292	1995	\$41,378
4940 94TH ST N	St. Petersburg	Industrial Not Classifie	\$2,119,293	18,768	1959	\$35,985
7801 PARK BLVD	Pinellas Park	Industrial Not Classifie	\$2,101,026	22,400	2003	\$39,179
11500 43RD ST N	Pinellas Park	Industrial Not Classifie	\$2,033,826	22,040	1982	\$34,841
12625 40TH ST N	Clearwater	Industrial Not Classifie	\$2,017,100	28,356	1982	\$37,020
1051 ISLAND AVE	Tarpon Springs	Industrial Not Classifie	\$1,863,827	7,114	1962	\$33,756
8050 ULMERTON RD	Largo	Industrial Not Classifie	\$1,799,103	9,850	1981	\$30,131
4680 34TH ST N	St. Petersburg	Industrial Not Classifie	\$1,793,008	15,973	1965	\$37,309
4699 110TH AVE N	Pinellas Park	Industrial Not Classifie	\$1,748,515	8,450	1995	\$32,990
3805 126TH AVE N	Pinellas Park	Industrial Not Classifie	\$1,743,462	24,300	1999	\$34,419
901 DR ML KING JR ST N	Safety Harbor	Industrial Not Classifie	\$1,739,840	32,400	1971	\$26,880
6425 ULMERTON RD	Largo	Industrial Not Classifie	\$1,660,954	15,506	1959	\$29,565
6795 114TH AVE	Pinellas Park	Industrial Not Classifie	\$1,656,111	11,615	2009	\$27,802
2255 STARKEY RD	Largo	Industrial Not Classifie	\$1,653,131	17,596	1970	\$32,347
2310 STARKEY RD	Largo	Industrial Not Classifie	\$1,634,908	18,024	1976	\$30,892
765 DUNBAR AVE	Oldsmar	Industrial Not Classifie	\$1,628,268	11,536	1982	\$28,783
4460 107TH CIR N	Pinellas Park	Industrial Not Classifie	\$1,624,210	5,416	1986	\$28,768
6425 53RD ST N	Pinellas Park	Industrial Not Classifie	\$1,536,999	25,778	1968	\$32,400
13200 58TH ST N	Clearwater	Industrial Not Classifie	\$1,522,678	14,540	1995	\$29,592
10940 70TH AVE	Seminole	Industrial Not Classifie	\$1,522,517	13,850	1968	\$25,111
109 OSCAR HILL RD	Tarpon Springs	Industrial Not Classifie	\$1,521,179	3,280	2003	\$27,033
2165 LOGAN ST	Clearwater	Industrial Not Classifie	\$1,519,035	8,700	1972	\$27,510
10250 68TH ST	Pinellas Park	Industrial Not Classifie	\$1,460,568	5,631	1965	\$22,933
2148 PINE FOREST DR	Largo	Industrial Not Classifie	\$1,428,590	26,837	1967	\$25,741
12875 60TH ST N	Clearwater	Industrial Not Classifie	\$1,424,389	15,000	1981	\$23,648

Address	City	Type	Market Value	Sq Ft	Year	Annual Tax
12895 AUTOMOBILE BLVD	Pinellas Park	Industrial Not Classifie	\$1,407,718	5,896	1954	\$29,246
855 BURLINGTON AVE N	St. Petersburg	Industrial Not Classifie	\$1,380,826	7,880	1961	\$29,005
200 FOREST LAKES BLVD S	Oldsmar	Industrial Not Classifie	\$1,351,678	9,659	1977	\$23,838
10800 CANAL ST	Pinellas Park	Industrial Not Classifie	\$1,329,367	7,200	1981	\$26,474
1621 S FT HARRISON AVE	Clearwater	Industrial Not Classifie	\$1,325,935	17,211	1955	\$23,747
4783 37TH ST N	St. Petersburg	Industrial Not Classifie	\$1,313,017	7,252	1987	\$26,618
7900 118TH AVE	Largo	Industrial Not Classifie	\$1,291,947	3,760	1959	\$23,518
7250 32ND AVE N	St. Petersburg	Industrial Not Classifie	\$1,289,897	15,424	1970	\$24,689
3565 126TH AVE N	Pinellas Park	Industrial Not Classifie	\$1,274,959	6,000	2002	\$21,448
4796 SPRING AVE	Pinellas Park	Industrial Not Classifie	\$1,267,432	9,340	1983	\$23,290
2763 CENTRAL AVE	St. Petersburg	Industrial Not Classifie	\$1,259,485	1,902	1950	\$25,060
7751 PARK BLVD	Pinellas Park	Industrial Not Classifie	\$1,258,827	4,320	1971	\$26,026
12435 US HIGHWAY 19 N	Pinellas Park	Industrial Not Classifie	\$1,204,589	18,386	1984	\$19,998
6890 142ND AVE	Largo	Industrial Not Classifie	\$1,180,046	14,740	1970	\$21,293
1102 ISLAND AVE	Tarpon Springs	Industrial Not Classifie	\$1,173,519	2,280	1922	\$21,881
4451 8TH AVE S	St. Petersburg	Industrial Not Classifie	\$1,145,862	19,320	1976	\$21,511
775 BELLEAIR RD	Clearwater	Industrial Not Classifie	\$1,139,439	4,000	1976	\$20,869
11400 US HIGHWAY 19 N	Pinellas Park	Industrial Not Classifie	\$1,138,546	8,798	1969	\$21,605
43RD ST N	Pinellas Park	Industrial Not Classifie	\$1,130,476	4,816	1986	\$23,538
6675 114TH AVE	Pinellas Park	Industrial Not Classifie	\$1,109,214	6,729		\$21,489
1066 ISLAND AVE	Tarpon Springs	Industrial Not Classifie	\$1,069,172	1,200	1980	\$20,677
8989 ULMERTON RD	Largo	Industrial Not Classifie	\$1,068,190	14,697	1973	\$21,044
13650 66TH ST	Largo	Industrial Not Classifie	\$1,060,468	5,142	1975	\$19,885
352 ALBERT ST	Dunedin	Industrial Not Classifie	\$1,046,295	6,560	1940	\$19,698
1210 1ST AVE N	St. Petersburg	Industrial Not Classifie	\$1,034,970	5,750	1942	\$20,482

Address	City	Type	Market Value	Sq Ft	Year	Annual Tax
5775 126TH AVE N	Pinellas Park	Industrial Not Classifie	\$1,027,194	4,000	2009	\$19,326
3050 CENTRAL AVE	St. Petersburg	Industrial Not Classifie	\$1,022,432	1,549	1952	\$21,431
1575 SUNSHINE DR	Clearwater	Industrial Not Classifie	\$1,012,200	4,160	1981	\$19,036
1220 1ST AVE N	St. Petersburg	Industrial Not Classifie	\$1,007,077	4,560	1937	\$19,983
10755 49TH ST N	Pinellas Park	Industrial Not Classifie	\$993,080	10,600	1982	\$16,560
11050 70TH AVE	Seminole	Industrial Not Classifie	\$978,111	8,350	1968	\$14,724
13065 40TH ST N	Clearwater	Industrial Not Classifie	\$975,377	19,018	1972	\$15,992
13802 PALM WAY	Largo	Industrial Not Classifie	\$939,920	1,748	1972	\$18,310
300 PAMPAS AVE	Tarpon Springs	Industrial Not Classifie	\$917,310	10,200		\$17,542
1046 ISLAND AVE	Tarpon Springs	Industrial Not Classifie	\$916,002	2,240	1978	\$16,925
1009 COURT ST	Clearwater	Industrial Not Classifie	\$895,102	1,288	1952	\$18,541
632 DREW ST	Clearwater	Industrial Not Classifie	\$890,790	15,879	1930	\$17,225
11413 49TH ST N	Clearwater	Industrial Not Classifie	\$889,568	6,000	1979	\$15,663
10875 52ND ST N	Pinellas Park	Industrial Not Classifie	\$875,756	1,674	2007	\$15,460
1625 STARKEY RD	Largo	Industrial Not Classifie	\$875,544	8,510	1973	\$17,486
6465 123RD AVE	Largo	Industrial Not Classifie	\$875,146	6,688	1970	\$16,298
6060 ULMERTON RD	Clearwater	Industrial Not Classifie	\$860,543	7,040	1958	\$16,029
1885 CEDAR ST	Safety Harbor	Industrial Not Classifie	\$856,062	2,400	1974	\$15,606
11965 49TH ST N	Clearwater	Industrial Not Classifie	\$850,591	8,970	1977	\$15,907
1601 4TH ST N	St. Petersburg	Industrial Not Classifie	\$816,785	240	1935	\$17,349
6370 146TH AVE N	Largo	Industrial Not Classifie	\$802,725	4,552	2004	\$13,255
4970 71ST AVE N	Pinellas Park	Industrial Not Classifie	\$779,385	3,814	1961	\$17,006
5300 70TH AVE N	Pinellas Park	Industrial Not Classifie	\$756,629	4,800	1998	\$14,943
715 LAURA ST	Clearwater	Industrial Not Classifie	\$754,904	7,410	1928	\$15,917
12949 66TH ST	Largo	Industrial Not Classifie	\$751,945	2,568	2022	\$14,223

Address	City	Type	Market Value	Sq Ft	Year	Annual Tax
500 3RD ST NW	Largo	Industrial Not Classifie	\$751,550	2,544	1947	\$14,713
7201 GULF BLVD	St. Pete Beach	Industrial Not Classifie	\$741,192	6,285	1952	\$11,655
1495 LAKE AVE SE	Largo	Industrial Not Classifie	\$738,322	4,390	1953	\$14,182
12575 US HIGHWAY 19 N	Pinellas Park	Industrial Not Classifie	\$733,186	7,935	1969	\$14,119
450 SEMINOLE BLVD	Largo	Industrial Not Classifie	\$714,955	3,963	1952	\$13,700
12988 49TH ST N	Pinellas Park	Industrial Not Classifie	\$714,732	3,696	1962	\$13,186
765 WESLEY AVE	Tarpon Springs	Industrial Not Classifie	\$699,403	8,910	2002	\$12,613
120 PINCKNEY ST	Oldsmar	Industrial Not Classifie	\$694,896	7,420	1968	\$11,041
803 S MISSOURI AVE	Clearwater	Industrial Not Classifie	\$693,139	2,320	1966	\$13,648
2001 13TH AVE N	St. Petersburg	Industrial Not Classifie	\$692,294	1,472	1946	\$14,357
11315 66TH ST	Pinellas Park	Industrial Not Classifie	\$679,484	3,352	1975	\$13,239
5009 8TH AVE S	Gulfport	Industrial Not Classifie	\$669,850	2,475	1964	\$11,594
6550 53RD ST N	Pinellas Park	Industrial Not Classifie	\$661,164	4,575	1970	\$12,929
12301 40TH ST N	Pinellas Park	Industrial Not Classifie	\$660,789	4,860	1995	\$11,567
11140 SEMINOLE BLVD	Seminole	Industrial Not Classifie	\$659,525	1,824	1968	\$13,034
17600 GULF BLVD	Redington Shores	Industrial Not Classifie	\$657,905	1,096	1951	\$10,282
7880 BLIND PASS RD	St. Pete Beach	Industrial Not Classifie	\$656,850	5,026	1957	\$10,160
715 MAIN ST	Dunedin	Industrial Not Classifie	\$655,000	1,316	1960	\$11,822
5290 PARK BLVD	Pinellas Park	Industrial Not Classifie	\$650,831	2,088	1963	\$13,029
11510 66TH ST	Largo	Industrial Not Classifie	\$642,771	4,803	1950	\$12,151
13075 66TH ST	Largo	Industrial Not Classifie	\$642,207	3,064	1967	\$12,099
501 N FT HARRISON AVE	Clearwater	Industrial Not Classifie	\$638,572	2,174	1928	\$12,814
4219 54TH AVE N	St. Petersburg	Industrial Not Classifie	\$630,839	3,933	1988	\$12,883
4700 ULMERTON RD	Pinellas Park	Industrial Not Classifie	\$627,224	2,400	1994	\$12,007
504 S MYRTLE AVE	Clearwater	Industrial Not Classifie	\$621,574	3,024	1949	\$12,894

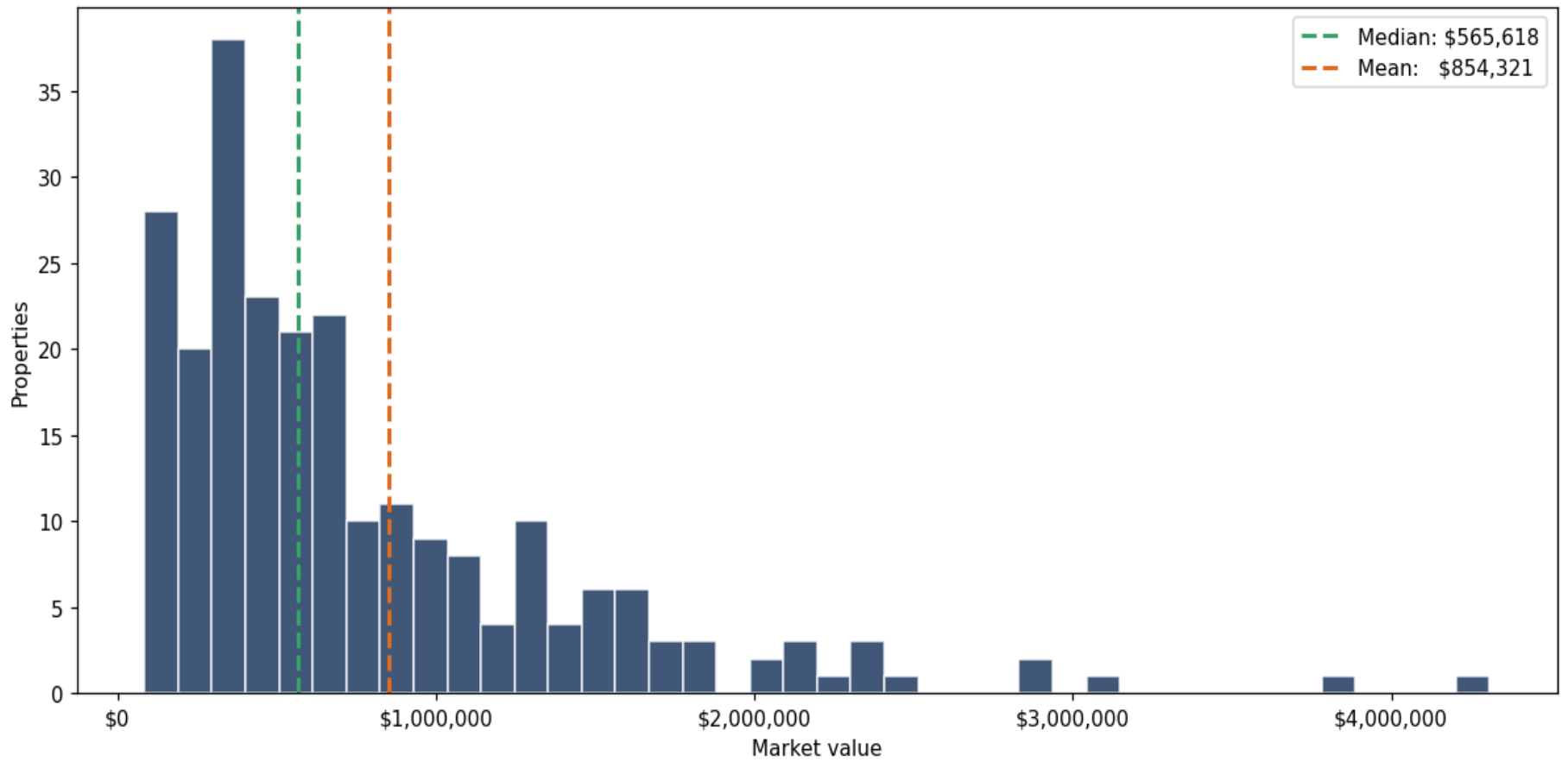
Address	City	Type	Market Value	Sq Ft	Year	Annual Tax
761 WESLEY AVE	Tarpon Springs	Industrial Not Classifie	\$619,538	9,010	1996	\$12,297
12930 34TH ST N	Clearwater	Industrial Not Classifie	\$603,573	2,025	1981	\$11,027
2338 EMERSON AVE S	St. Petersburg	Industrial Not Classifie	\$594,974	1,984	1982	\$12,156
11380 58TH ST	Pinellas Park	Industrial Not Classifie	\$583,624	5,464	1954	\$11,179
7362 46TH AVE N	St. Petersburg	Industrial Not Classifie	\$578,301	2,989	1950	\$11,937
1597 N HERCULES AVE	Clearwater	Industrial Not Classifie	\$572,813	2,220	1978	\$10,241
5000 MAIN ST N	St. Petersburg	Industrial Not Classifie	\$567,944	3,155	1984	\$11,604
14413 62ND ST N	Largo	Industrial Not Classifie	\$566,225	3,668	1970	\$12,748
6111 142ND AVE N	Largo	Industrial Not Classifie	\$565,888	3,558	1967	\$10,424
1609 N HERCULES AVE	Clearwater	Industrial Not Classifie	\$565,347	2,044	1958	\$10,136
1701 1ST AVE S	St. Petersburg	Industrial Not Classifie	\$564,630	1,250	1926	\$11,272
4320 54TH AVE N	St. Petersburg	Industrial Not Classifie	\$560,147	5,120	1955	\$12,228
2400 22ND ST N	St. Petersburg	Industrial Not Classifie	\$560,050	1,280	1951	\$11,248
10851 49TH ST N	Pinellas Park	Industrial Not Classifie	\$551,716	4,040	1970	\$11,307
1480 MAIN ST	Dunedin	Industrial Not Classifie	\$543,477	1,379	1967	\$9,911
369 MEARS BLVD	Oldsmar	Industrial Not Classifie	\$538,890	2,225	1994	\$9,036
11076 70TH AVE	Seminole	Industrial Not Classifie	\$534,889	1,858	1951	\$8,735
1101 KAPP DR	Clearwater	Industrial Not Classifie	\$516,061	456		\$12,790
2100 CENTRAL AVE	St. Petersburg	Industrial Not Classifie	\$515,886	2,116	1959	\$10,221
265 N DR MARTIN LUTHER KING JR A	St. Petersburg	Industrial Not Classifie	\$514,264	3,760	1940	\$10,383
1727 12TH ST SE	Largo	Industrial Not Classifie	\$513,234	780	1955	\$9,464
11475 49TH ST N	Pinellas Park	Industrial Not Classifie	\$508,888	3,810	1979	\$9,342
2169 DREW ST	Clearwater	Industrial Not Classifie	\$499,727	3,000	1967	\$9,895
10776 66TH ST	Pinellas Park	Industrial Not Classifie	\$499,511	2,000	2005	\$9,589
2731 BEACH BLVD S	Gulfport	Industrial Not Classifie	\$485,579	4,803	1923	\$8,662

Address	City	Type	Market Value	Sq Ft	Year	Annual Tax
166 CANDY LN	Palm Harbor	Industrial Not Classifie	\$485,497	2,108	1951	\$8,894
2415 28TH AVE N	St. Petersburg	Industrial Not Classifie	\$485,047	2,400	1960	\$10,096
10855 OAK ST NE	St. Petersburg	Industrial Not Classifie	\$484,863	1,136	1970	\$8,303
3787 118TH AVE N	Pinellas Park	Industrial Not Classifie	\$481,827	4,500	2008	\$8,305
7030 BURLINGTON AVE N	St. Petersburg	Industrial Not Classifie	\$481,348	1,868	1966	\$10,212
2040 SUNNYDALE BLVD	Clearwater	Industrial Not Classifie	\$474,900	2,388	1967	\$8,497
12550 BELCHER RD S	Largo	Industrial Not Classifie	\$471,957	2,000	1978	\$8,092
7300 58TH ST N	Pinellas Park	Industrial Not Classifie	\$471,057	4,884	1916	\$9,613
2390 118TH AVE N	St. Petersburg	Industrial Not Classifie	\$466,306	952	1965	\$9,658
1055 N PINELLAS AVE	Tarpon Springs	Industrial Not Classifie	\$464,537	1,344	1970	\$9,005
409 N FT HARRISON AVE	Clearwater	Industrial Not Classifie	\$448,460	7,593	1958	\$8,214
4765 SPRING AVE	Pinellas Park	Industrial Not Classifie	\$446,084	2,000	1983	\$10,514
12433 66TH ST	Largo	Industrial Not Classifie	\$443,774	2,856	1983	\$8,807
2285 1ST AVE N	St. Petersburg	Industrial Not Classifie	\$415,196	1,776	1925	\$8,194
6750 106TH ST	Seminole	Industrial Not Classifie	\$412,760	1,640	1972	\$6,430
4550 35TH ST N	St. Petersburg	Industrial Not Classifie	\$412,472	2,024	1960	\$8,906
40440 US HIGHWAY 19 N	Tarpon Springs	Industrial Not Classifie	\$405,510	1,586	1956	\$8,120
1845 S PINELLAS AVE	Tarpon Springs	Industrial Not Classifie	\$405,255	5,728	1997	\$7,504
703 JONES ST	Clearwater	Industrial Not Classifie	\$403,833	15,676	1973	\$12,033
1268 ENGMAN ST	Clearwater	Industrial Not Classifie	\$402,834	5,960	1973	\$7,475
10812 66TH ST	Pinellas Park	Industrial Not Classifie	\$399,500	1,114	1935	\$8,174
406 N GARDEN AVE	Clearwater	Industrial Not Classifie	\$395,593	8,760	1957	\$7,146
234 15TH ST N	St. Petersburg	Industrial Not Classifie	\$393,000	1,388	1960	\$8,158
1502 SAVANNAH AVE	Tarpon Springs	Industrial Not Classifie	\$392,309	1,136	1962	\$7,713
6456 123RD AVE	Largo	Industrial Not Classifie	\$390,916	3,900	1986	\$7,637

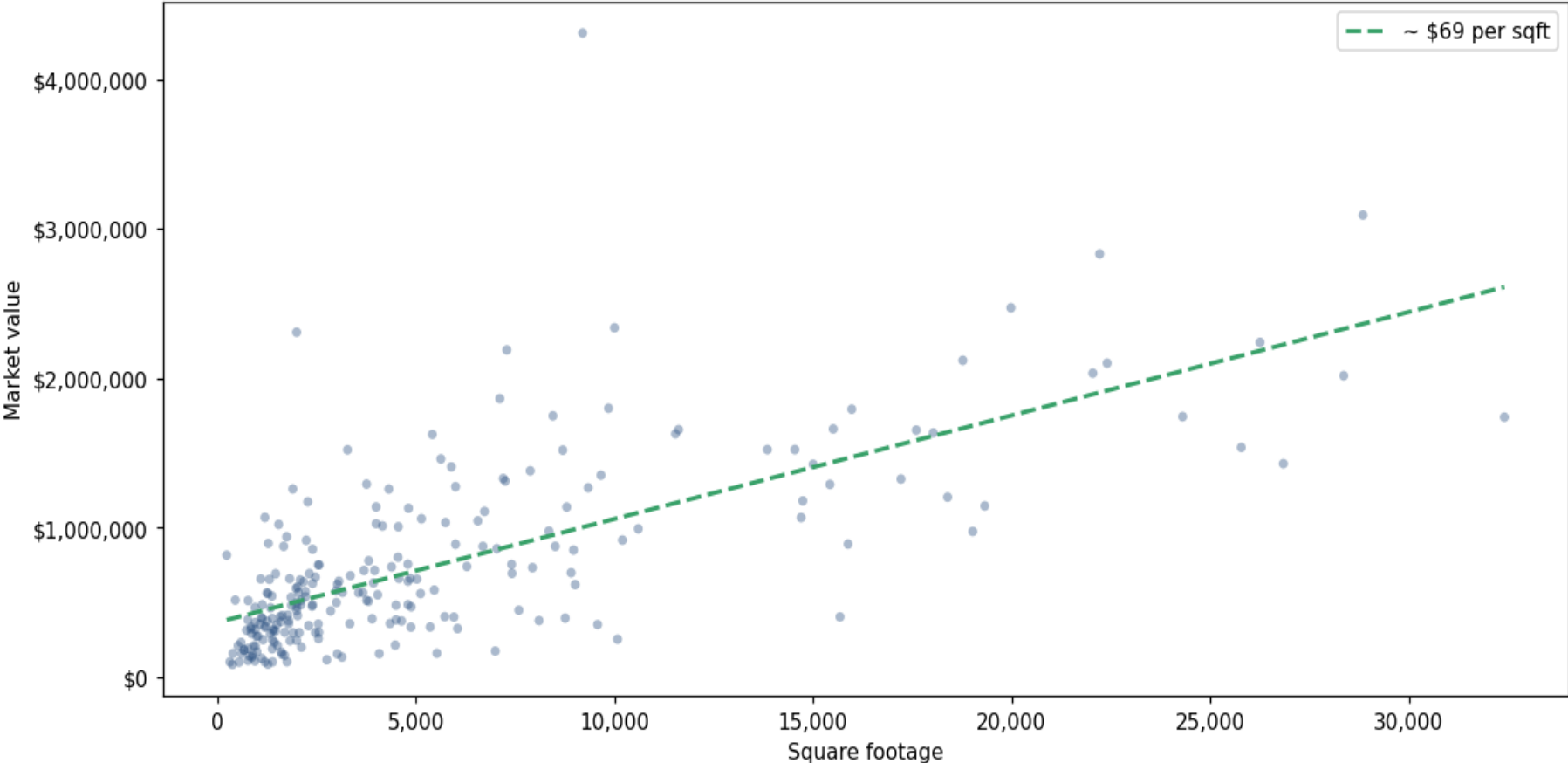
Address	City	Type	Market Value	Sq Ft	Year	Annual Tax
6481 ULMERTON RD	Largo	Industrial Not Classifie	\$384,277	774	1946	\$6,944
6400 123RD AVE	Pinellas Park	Industrial Not Classifie	\$384,041	4,500	1986	\$7,640
1100 COVE CAY DR	Clearwater	Industrial Not Classifie	\$379,501	8,100	1990	\$6,490
299 BEAR RIDGE CIR	Palm Harbor	Industrial Not Classifie	\$378,346	1,800	1996	\$6,391
6556 125TH AVE	Largo	Industrial Not Classifie	\$376,660	4,640	1986	\$6,371
3102 ALT 19	Palm Harbor	Industrial Not Classifie	\$375,014	1,260	1956	\$7,030
5385 SEMINOLE BLVD	St. Petersburg	Industrial Not Classifie	\$372,277	1,600	1955	\$6,696
883 SOUTH WIND LN	Largo	Industrial Not Classifie	\$365,528	956	1954	\$6,877
519 PENNSYLVANIA AVE	Clearwater	Industrial Not Classifie	\$359,795	4,350	1929	\$7,915
6537 123RD AVE	Pinellas Park	Industrial Not Classifie	\$358,275	3,338	1995	\$6,654
6235 78TH AVE N	Pinellas Park	Industrial Not Classifie	\$357,978	1,800	1970	\$7,732
7098 73RD ST N	Pinellas Park	Industrial Not Classifie	\$356,312	2,545	1956	\$7,787
37220 US HIGHWAY 19 N	Palm Harbor	Industrial Not Classifie	\$355,796	1,074	1960	\$6,780
1456 SAVANNAH AVE	Tarpon Springs	Industrial Not Classifie	\$353,331		2001	\$6,221
905 DELAWARE ST	Safety Harbor	Industrial Not Classifie	\$352,564	9,576	1965	\$6,678
925 HARBOR LAKE CT	Safety Harbor	Industrial Not Classifie	\$351,540	1,500	1978	\$6,353
6260 44TH ST	Pinellas Park	Industrial Not Classifie	\$345,000	2,301	1986	\$7,240
12750 US HIGHWAY 19 N	Clearwater	Industrial Not Classifie	\$339,953	1,224	1960	\$5,918
7167 13TH AVE N	St. Petersburg	Industrial Not Classifie	\$336,502	5,360	2014	\$6,732
6500 49TH ST N	Pinellas Park	Industrial Not Classifie	\$335,982	1,193	1957	\$7,343
4041 40TH ST N	St. Petersburg	Industrial Not Classifie	\$335,526	4,878	1949	\$7,044
5381 SEMINOLE BLVD	St. Petersburg	Industrial Not Classifie	\$335,073	856	1951	\$5,987
10265 68TH ST	Pinellas Park	Industrial Not Classifie	\$325,789	6,052	1948	\$5,563
1400 N HERCULES AVE	Clearwater	Industrial Not Classifie	\$322,094	848	1967	\$5,953
14570 WALSINGHAM RD	Largo	Industrial Not Classifie	\$321,441	1,421	1957	\$5,685

Address	City	Type	Market Value	Sq Ft	Year	Annual Tax
415 DEMPSEY RD	Palm Harbor	Industrial Not Classifie	\$319,446	960	1938	\$5,975
3645 45TH AVE N	St. Petersburg	Industrial Not Classifie	\$315,329	738	1974	\$6,687
6515 HAINES RD N	St. Petersburg	Industrial Not Classifie	\$310,516	1,406	1940	\$7,130
6635 49TH AVE N	St. Petersburg	Industrial Not Classifie	\$309,238	1,464	1926	\$6,564
7600 PARK BLVD	Pinellas Park	Industrial Not Classifie	\$301,047	1,700	1974	\$6,077
106 W PARK ST	Tarpon Springs	Industrial Not Classifie	\$300,836	2,560	1901	\$5,620
5195 95TH ST N	St. Petersburg	Industrial Not Classifie	\$299,170	2,472	1968	\$5,417
4357 8TH AVE S	St. Petersburg	Industrial Not Classifie	\$297,741	2,064	2007	\$6,054
31ST ST N	St. Petersburg	Industrial Not Classifie	\$296,827	1,912	2003	\$5,607
1525 RAINVILLE RD	Tarpon Springs	Industrial Not Classifie	\$293,038	864	1950	\$5,722
8165 46TH AVE N	St. Petersburg	Industrial Not Classifie	\$290,907	1,336	1947	\$6,114
6540 85TH AVE N	Pinellas Park	Industrial Not Classifie	\$274,610	988	1953	\$5,733

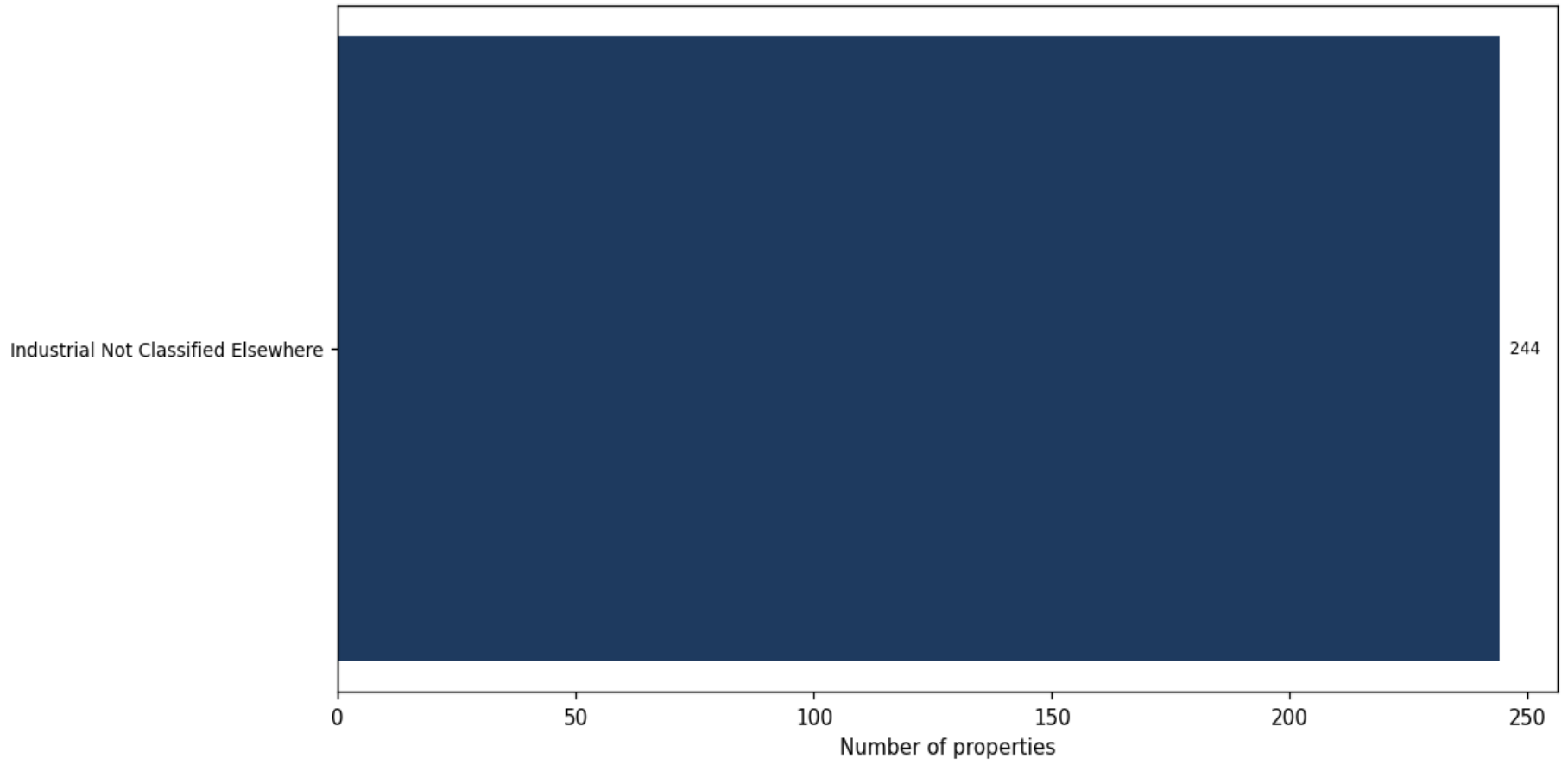
Market value distribution (n=244, top 1% trimmed for readability)



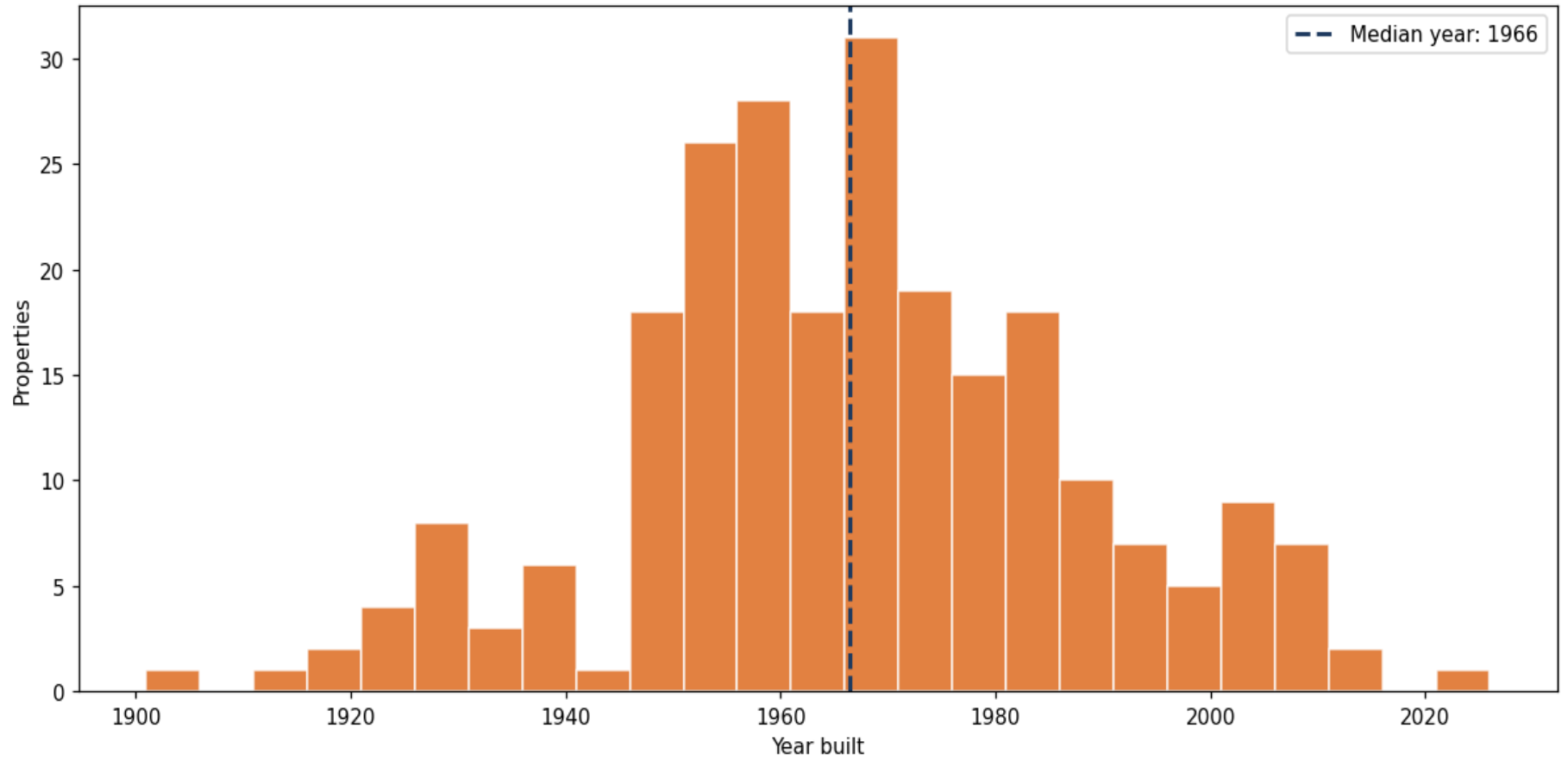
Building size vs. market value (n=237, outliers trimmed)



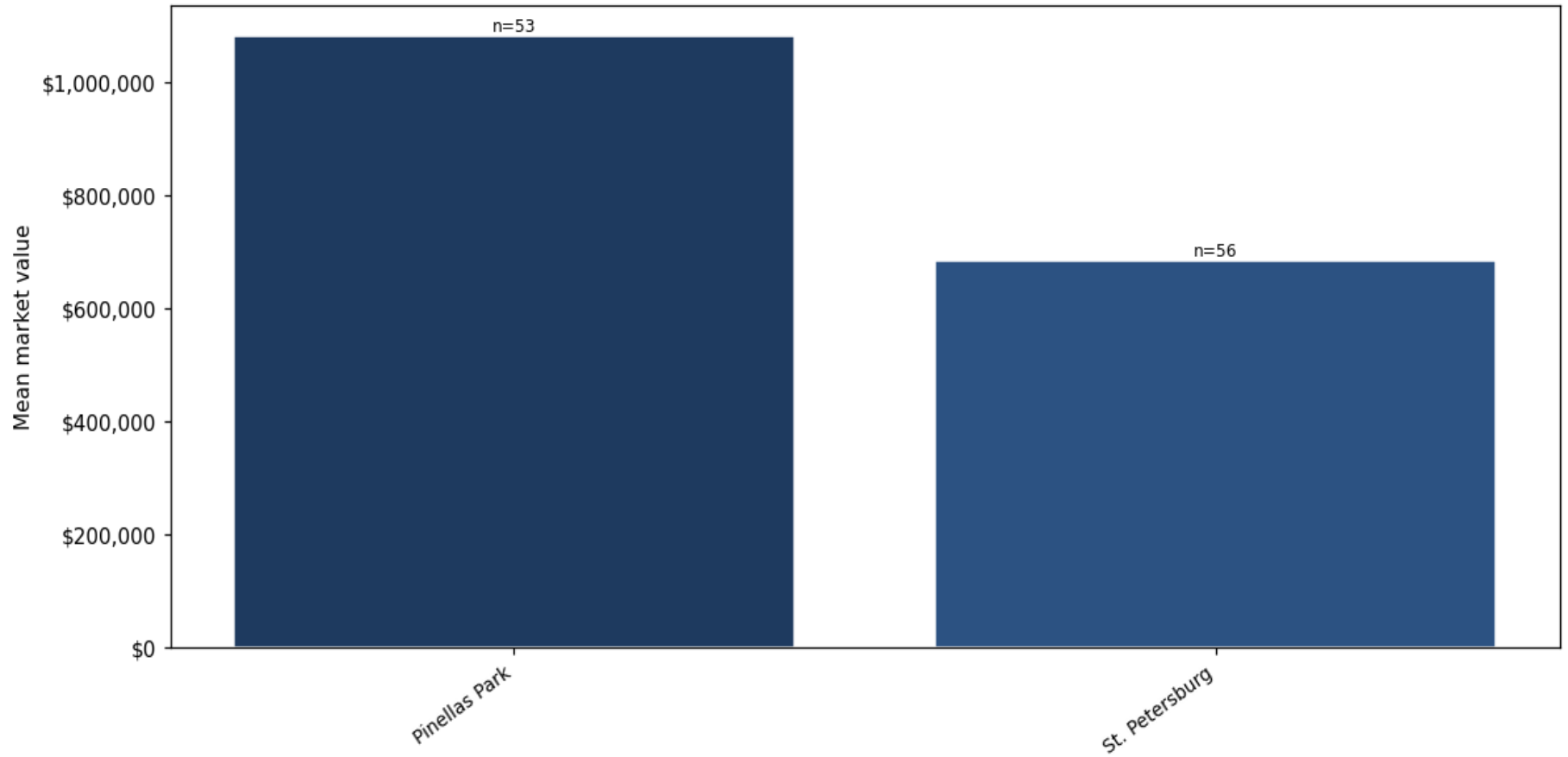
Top property types by count



Year built distribution (5-year buckets)



Mean market value by city (cities with ≥ 50 matches)



Market value vs. assessed value (gap = untaxed appreciation)

