

Pinellas Property Market Report

2,101 matching properties • May 30, 2026

Filters applied	Headline numbers
Property type: General Office	Properties matched: 2,101
	Median market value: \$495,000
	Mean market value: \$1,582,445
	Min / Max: \$63,500 / \$85,550,000
	Mean square footage: 12,895

Top 200 properties by market value

Address	City	Type	Market Value	Sq Ft	Year	Annual Tax
100 FOUNTAIN PKWY N	St. Petersburg	General Office Bldg - mu	\$85,550,000	587,821	1997	\$1,704,230
880 CARILLON PKWY	St. Petersburg	General Office Bldg - mu	\$81,100,000	571,958	1998	\$1,615,587
200 CENTRAL AVE	St. Petersburg	General Office Bldg - mu	\$51,650,000	339,332	1990	\$1,052,358
501 BROOKER CREEK BLVD	Oldsmar	General Office Bldg - mu	\$50,850,000	442,742	2003	\$810,959
100 2ND AVE S	St. Petersburg	General Office Bldg - mu	\$42,550,000	253,590	1984	\$863,180
299 1ST AVE N	St. Petersburg	General Office Bldg - mu	\$42,550,000	226,798	2006	\$847,683
880 CARILLON PKWY	St. Petersburg	General Office Bldg - mu	\$42,150,000	306,000	1987	\$839,715
360 CENTRAL AVE	St. Petersburg	General Office Bldg - mu	\$40,250,000	266,207	1984	\$802,764
1 ASI WAY	St. Petersburg	General Office Bldg - mu	\$39,500,000	241,017	2013	\$640,020
570 CARILLON PKWY	St. Petersburg	General Office Bldg - mu	\$35,040,000	250,000	1998	\$681,055
150 2ND AVE N	St. Petersburg	General Office Bldg - mu	\$35,010,000	207,145	1985	\$698,683
10800 ROOSEVELT BLVD N	St. Petersburg	General Office Bldg - mu	\$32,300,000	174,071	2021	\$643,506
16202 BAY VISTA DR	Largo	General Office Bldg - mu	\$28,800,000	295,536	1997	\$547,781

Address	City	Type	Market Value	Sq Ft	Year	Annual Tax
111 2ND AVE NE # 702	St. Petersburg	General Office Bldg - mu	\$26,600,000	186,821	1979	\$530,063
900 CARILLON PKWY	St. Petersburg	General Office Bldg - mu	\$26,050,000	145,000	2004	\$519,008
700 CARILLON PKWY	St. Petersburg	General Office Bldg - mu	\$25,950,000	168,960	2004	\$517,016
200 CARILLON PKWY	St. Petersburg	General Office Bldg - mu	\$25,075,000	166,720	2000	\$499,586
740 CARILLON PKWY	St. Petersburg	General Office Bldg - mu	\$23,400,000	155,456	1991	\$466,320
800 CARILLON PKWY	St. Petersburg	General Office Bldg - mu	\$23,400,000	170,000	1987	\$466,320
970 LAKE CARILLON DR	St. Petersburg	General Office Bldg - mu	\$23,100,000	124,941	2008	\$453,572
603 7TH ST S	St. Petersburg	General Office Bldg - mu	\$22,500,000	213,038	1995	\$448,990
1840 MEASE DR	Safety Harbor	General Office Bldg - mu	\$21,570,000	145,000	2002	\$376,212
3201 34TH ST S	St. Petersburg	General Office Bldg - mu	\$20,144,898	171,919	1972	\$393,123
8787 BRYAN DAIRY RD	Largo	General Office Bldg - mu	\$18,745,000	127,840		\$335,545
17755 US HIGHWAY 19 N	Largo	General Office Bldg - mu	\$18,725,000	219,130	1987	\$360,852
311 PARK PLACE BLVD	Clearwater	General Office Bldg - mu	\$18,400,000	122,520	1985	\$356,177
1901 ULMERTON RD	St. Petersburg	General Office Bldg - mu	\$17,400,000	157,379	1999	\$346,902
11601 ROOSEVELT BLVD	St. Petersburg	General Office Bldg - mu	\$16,950,000	304,312	1980	\$373,196
2501 118TH AVE N	St. Petersburg	General Office Bldg - mu	\$16,300,000	272,858	1987	\$324,990
18167 US HIGHWAY 19 N	Clearwater	General Office Bldg - mu	\$15,900,000	146,894	1987	\$312,296
501 BROOKER CREEK BLVD	Oldsmar	General Office Bldg - mu	\$15,800,000	137,424	2005	\$275,020
100 CARILLON PKWY	St. Petersburg	General Office Bldg - mu	\$15,500,000	80,000	1987	\$306,963
1000 118TH AVE N	St. Petersburg	General Office Bldg - mu	\$15,500,000	116,937	2019	\$310,349
400 CARILLON PKWY	St. Petersburg	General Office Bldg - mu	\$15,235,000	108,086	1999	\$307,879
10101 DR MARTIN LUTHER KING JR S	St. Petersburg	General Office Bldg - mu	\$14,700,000	88,446	1987	\$292,919
19387 US HIGHWAY 19 N	Clearwater	General Office Bldg - mu	\$14,250,000	128,966	2001	\$276,736
13600 ICOT BLVD	Largo	General Office Bldg - mu	\$13,850,000	67,641	1997	\$262,935
601 BROOKER CREEK BLVD	Oldsmar	General Office Bldg - mu	\$13,500,000	101,520	2000	\$237,358

Address	City	Type	Market Value	Sq Ft	Year	Annual Tax
11101 ROOSEVELT BLVD N	St. Petersburg	General Office Bldg - mu	\$12,900,000	166,036	2003	\$276,286
501 1ST AVE N	St. Petersburg	General Office Bldg - mu	\$12,840,000	177,191	1922	\$255,968
2501 118TH AVE N	St. Petersburg	General Office Bldg - mu	\$12,550,000	107,493	1990	\$250,490
300 PARK PLACE BLVD	Clearwater	General Office Bldg - mu	\$12,500,000	101,115	1999	\$241,999
700 CENTRAL AVE # 104	St. Petersburg	General Office Bldg - mu	\$12,200,000	89,436	1968	\$249,992
380 PARK PLACE BLVD	Clearwater	General Office Bldg - mu	\$12,185,000	84,642	2001	\$235,903
5380 TECH DATA DR	Largo	General Office Bldg - mu	\$12,030,000	144,000	1994	\$234,112
16120 US HIGHWAY 19 N	Largo	General Office Bldg - mu	\$11,900,000	199,732	1985	\$252,530
580 CARILLON PKWY	St. Petersburg	General Office Bldg - mu	\$11,800,000	99,723	1999	\$182,863
850 CENTRAL AVE	St. Petersburg	General Office Bldg - mu	\$11,750,000	81,300	1973	\$234,156
11200 DR MARTIN LUTHER KING JR S	St. Petersburg	General Office Bldg - mu	\$11,503,000	100,244	1988	\$229,176
15550 LIGHTWAVE DR	Largo	General Office Bldg - mu	\$11,125,000	92,160	1998	\$211,233
11399 16TH CT N	St. Petersburg	General Office Bldg - mu	\$11,050,000	110,150	1998	\$220,212
10560 DR MARTIN LUTHER KING JR S	St. Petersburg	General Office Bldg - mu	\$10,880,000	64,000	1999	\$216,826
73 N PARK PLACE BLVD	Clearwater	General Office Bldg - mu	\$10,805,500	63,560	2008	\$209,197
28100 US HIGHWAY 19 N	Dunedin	General Office Bldg - mu	\$10,750,000	83,966	1989	\$189,306
8839 BRYAN DAIRY RD	Largo	General Office Bldg - mu	\$10,630,000	72,474	2007	\$192,454
6451 126TH AVE N	Largo	General Office Bldg - mu	\$10,540,000	82,836	2013	\$216,493
560 CARILLON PKWY	St. Petersburg	General Office Bldg - mu	\$10,200,000	80,000	1987	\$137,446
601 CLEVELAND ST	Clearwater	General Office Bldg - mu	\$10,150,000	158,388	1985	\$208,709
263 13TH AVE S	St. Petersburg	General Office Bldg - mu	\$10,150,000	80,991	1924	\$262,691
805 EXECUTIVE CENTER DR W	St. Petersburg	General Office Bldg - mu	\$10,145,000	89,874	2000	\$202,185
5400 TECH DATA DR	Largo	General Office Bldg - mu	\$10,050,000	110,008	1989	\$192,720
13535 FEATHER SOUND DR # 210	Clearwater	General Office Bldg - mu	\$10,000,000	83,000	1983	\$193,387
33 N GARDEN AVE # 120	Clearwater	General Office Bldg - mu	\$9,985,000	105,500	1991	\$203,222

Address	City	Type	Market Value	Sq Ft	Year	Annual Tax
600 CLEVELAND ST	Clearwater	General Office Bldg - mu	\$9,805,000	144,346	1975	\$207,998
13577 FEATHER SOUND DR	Clearwater	General Office Bldg - mu	\$9,600,000	83,000	1986	\$189,576
300 1ST AVE S	St. Petersburg	General Office Bldg - mu	\$9,575,000	56,000	1990	\$192,006
490 1ST AVE S	St. Petersburg	General Office Bldg - mu	\$9,212,790	239,537	1968	\$190,677
8550 ULMERTON RD	Largo	General Office Bldg - mu	\$8,995,000	130,944	1972	\$170,885
11300 4TH ST N	St. Petersburg	General Office Bldg - mu	\$8,800,000	76,800	1982	\$175,393
1201 5TH AVE N	St. Petersburg	General Office Bldg - mu	\$7,965,000	64,165	1982	\$158,860
100 S MISSOURI AVE	Clearwater	General Office Bldg - mu	\$7,900,000	132,240	1999	\$161,561
1659 ACHIEVA WAY	Dunedin	General Office Bldg - mu	\$7,890,000	62,696	2013	\$138,965
888 EXECUTIVE CENTER DR W	St. Petersburg	General Office Bldg - mu	\$7,810,000	73,080	1986	\$144,219
1300 1ST AVE N	St. Petersburg	General Office	\$7,799,540		2025	\$433,297
2706 ALT 19	Palm Harbor	General Office Bldg - mu	\$7,730,000	72,738	1986	\$139,558
800 2ND AVE S	St. Petersburg	General Office Bldg - mu	\$7,535,000	40,588	1983	\$150,145
28050 US HIGHWAY 19 N	Dunedin	General Office Bldg - mu	\$7,375,000	79,211	1987	\$115,247
877 EXECUTIVE CENTER DR W	St. Petersburg	General Office Bldg - mu	\$7,375,000	69,378	1988	\$147,007
333 3RD AVE N	St. Petersburg	General Office Bldg - mu	\$7,325,000	54,010	1958	\$147,705
14255 49TH ST N	Clearwater	General Office Bldg - mu	\$7,150,000	84,046	1989	\$134,398
700 6TH ST S	St. Petersburg	General Office Bldg - mu	\$7,150,000	55,222	1978	\$149,617
6021 142ND AVE N	Largo	General Office Bldg - mu	\$6,815,000	78,230	1997	\$132,578
4025 TAMPA RD	Oldsmar	General Office Bldg - mu	\$6,800,000	59,237	1985	\$110,271
4114 WOODLANDS PKWY	Palm Harbor	General Office Bldg - mu	\$6,775,000	50,155	2005	\$122,482
830 DOUGLAS AVE	Dunedin	General Office Bldg - mu	\$6,699,046	25,534	1976	\$122,606
2727 ULMERTON RD	St. Petersburg	General Office Bldg - mu	\$6,672,000	59,652	1986	\$132,964
710 CARILLON PKWY	St. Petersburg	General Office Bldg - mu	\$6,650,000	41,750	1998	\$132,466
2600 MCCORMICK DR # 300	Clearwater	General Office Bldg - mu	\$6,625,000	75,300	1987	\$128,208

Address	City	Type	Market Value	Sq Ft	Year	Annual Tax
5225 TECH DATA DR	Largo	General Office Bldg - mu	\$6,570,000	70,240	1988	\$136,043
2605 ENTERPRISE RD E	Clearwater	General Office Bldg - mu	\$6,540,000	56,880	1988	\$126,660
8950 DR MARTIN LUTHER KING JR ST	St. Petersburg	General Office Bldg - mu	\$6,370,000	63,414	1967	\$127,088
11600 DR MARTIN LUTHER KING JR S	St. Petersburg	General Office Bldg - mu	\$6,325,000	59,513	1980	\$128,183
33920 US HIGHWAY 19 N # 280	Palm Harbor	General Office Bldg - mu	\$6,325,000	65,856	1986	\$116,550
2650 MCCORMICK DR	Clearwater	General Office Bldg - mu	\$6,325,000	72,991	1989	\$122,403
16255 BAY VISTA DR	Largo	General Office Bldg - mu	\$6,290,000	73,968	1988	\$119,524
801 WEST BAY DR # 328	Largo	General Office Bldg - mu	\$6,200,000	94,889	1973	\$109,936
34125 US HIGHWAY 19 N	Palm Harbor	General Office Bldg - mu	\$6,170,000	63,700	1989	\$111,477
33 6TH ST S	St. Petersburg	General Office Bldg - mu	\$6,154,500	33,853	1953	\$122,606
410 PARK PLACE BLVD	Clearwater	General Office Bldg - mu	\$6,150,000	50,712	1985	\$119,113
29750 US HIGHWAY 19 N	Dunedin	General Office Bldg - mu	\$6,105,000	40,990	2006	\$107,546
3251 3RD AVE N	St. Petersburg	General Office Bldg - mu	\$6,090,000	46,708	1971	\$121,510
13921 ICOT BLVD	Largo	General Office Bldg - mu	\$6,085,000	69,800	1988	\$115,822
2536 COUNTRYSIDE BLVD # 250	Clearwater	General Office Bldg - mu	\$6,052,500	91,518	1974	\$130,144
1700 66TH ST N	St. Petersburg	General Office Bldg - mu	\$6,050,000	72,075	1981	\$146,410
9800 4TH ST N	St. Petersburg	General Office Bldg - mu	\$6,010,000	57,120	1985	\$119,817
11208 BLUE HERON BLVD N	St. Petersburg	General Office Bldg - mu	\$6,000,000	50,130	2000	\$119,717
3051 TECH DR N	St. Petersburg	General Office Bldg - mu	\$5,950,000	85,558	1982	\$111,962
3165 MCMULLEN BOOTH RD	Safety Harbor	General Office Bldg - mu	\$5,935,000	49,837	1999	\$104,503
1609 PASADENA AVE S	South Pasadena	General Office Bldg - mu	\$5,910,000	47,313	1966	\$111,946
4592 ULMERTON RD	Pinellas Park	General Office Bldg - mu	\$5,885,000	45,896	2007	\$109,064
19321 US HIGHWAY 19 N	Clearwater	General Office Bldg - mu	\$5,865,000	81,353	1975	\$116,723
146 2ND ST N # 103	St. Petersburg	General Office Bldg - mu	\$5,855,000	41,600	1927	\$116,829
1201 102ND AVE N	St. Petersburg	General Office	\$5,738,431	29,600	1971	\$117,355

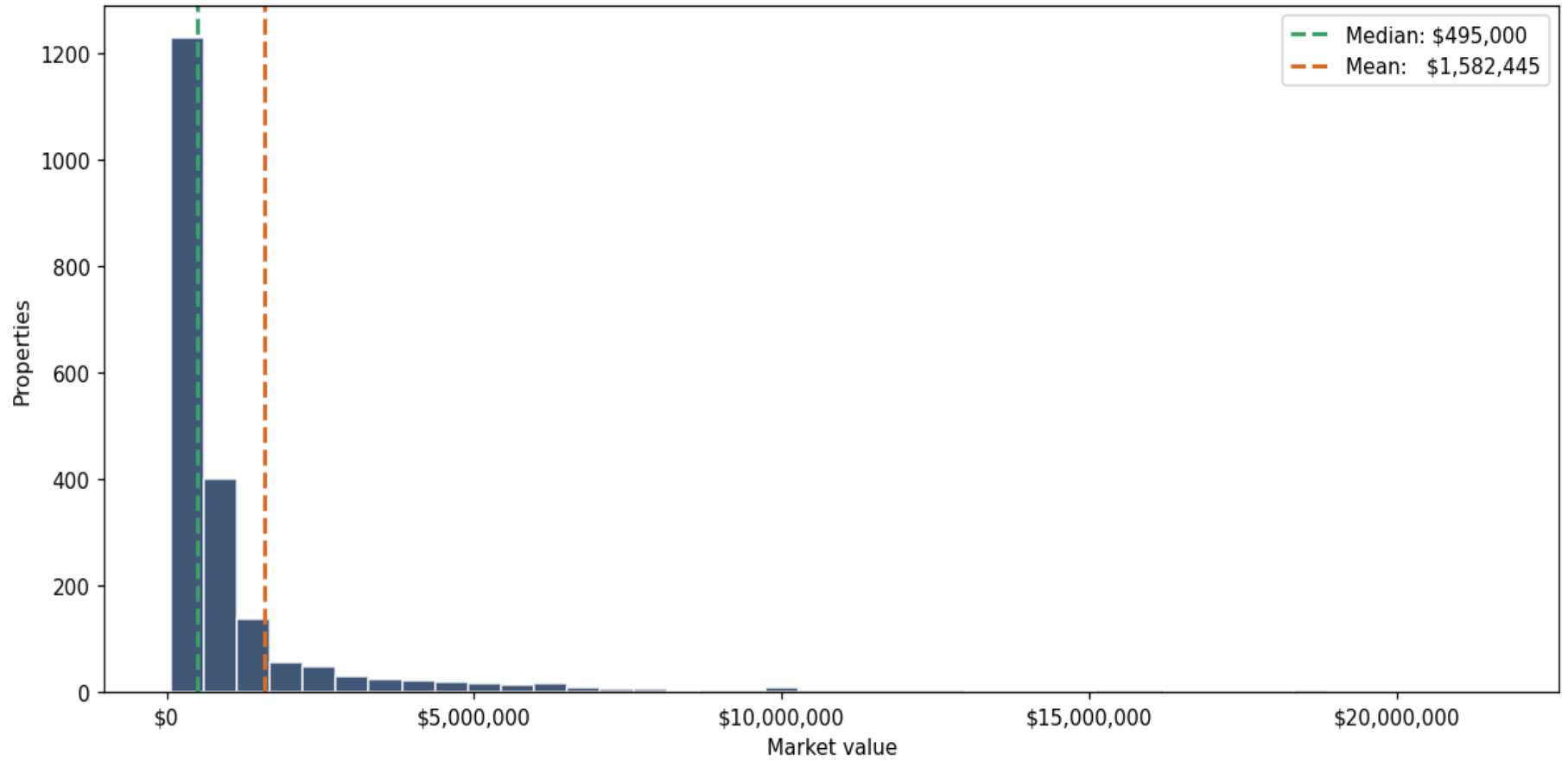
Address	City	Type	Market Value	Sq Ft	Year	Annual Tax
15950 BAY VISTA DR	Largo	General Office Bldg - mu	\$5,725,000	57,273	1988	\$108,797
10222 MCI DR	Pinellas Park	General Office Bldg - mu	\$5,715,533	129,542	1990	\$107,329
10900 ROOSEVELT BLVD N	St. Petersburg	General Office Bldg - mu	\$5,675,000	37,900	1983	\$113,144
1615 PASADENA AVE S	South Pasadena	General Office Bldg - mu	\$5,615,000	46,000	1994	\$107,771
2505 118TH AVE N	St. Petersburg	General Office Bldg - mu	\$5,550,000	97,670	1986	\$110,654
905 E MARTIN LUTHER KING JR DR	Tarpon Springs	General Office Bldg - mu	\$5,550,000	76,908	1986	\$104,641
12200 BELCHER RD	Pinellas Park	General Office	\$5,450,000	50,028	2017	\$105,527
9721 EXECUTIVE CENTER DR N	St. Petersburg	General Office Bldg - mu	\$5,435,000	51,041	1975	\$108,363
801 94TH AVE N	St. Petersburg	General Office Bldg - mu	\$5,410,000	50,068	1984	\$100,196
11500 DR MARTIN LUTHER KING JR S	St. Petersburg	General Office Bldg - mu	\$5,352,500	46,646	1985	\$106,670
29399 US HIGHWAY 19 N	Clearwater	General Office Bldg - mu	\$5,325,000	51,340	1986	\$98,987
3637 4TH ST N	St. Petersburg	General Office Bldg - mu	\$5,305,000	50,488	1976	\$105,674
15500 LIGHTWAVE DR	Largo	General Office Bldg - mu	\$5,285,000	49,470	2001	\$100,442
3001 EXECUTIVE DR	St. Petersburg	General Office Bldg - mu	\$5,250,000	66,000	1987	\$104,678
13945 EVERGREEN AVE	Clearwater	General Office Bldg - mu	\$5,100,000	29,852	2010	\$99,473
5500 RIO VISTA DR	Largo	General Office Bldg - mu	\$5,060,000	53,890	1988	\$96,170
13630 58TH ST N	Largo	General Office Bldg - mu	\$5,060,000	48,600	1984	\$96,265
6565 ULMERTON RD	Largo	General Office Bldg - mu	\$4,985,000	37,100	1970	\$94,746
4625 EAST BAY DR	Largo	General Office Bldg - mu	\$4,940,000	61,164	1984	\$96,265
260 1ST AVE S	St. Petersburg	General Office Bldg - mu	\$4,925,000	31,079	1985	\$98,702
4800 140TH AVE N	Clearwater	General Office Bldg - mu	\$4,925,000	57,816	1983	\$94,701
25400 US HIGHWAY 19 N	Clearwater	General Office Bldg - mu	\$4,925,000	52,668	1976	\$95,310
51 S MAIN AVE	Clearwater	General Office Bldg - mu	\$4,865,000	63,555	1973	\$94,245
14100 58TH ST N	Largo	General Office Bldg - mu	\$4,855,000	53,852	1986	\$133,100
26750 US HIGHWAY 19 N	Clearwater	General Office Bldg - mu	\$4,820,000	58,560	1987	\$93,374

Address	City	Type	Market Value	Sq Ft	Year	Annual Tax
8200 BRYAN DAIRY RD	Pinellas Park	General Office Bldg - mu	\$4,810,000	47,094	2000	\$92,049
11201 CORPORATE CIR N	St. Petersburg	General Office Bldg - mu	\$4,800,000	58,839	1987	\$96,113
8250 BRYAN DAIRY RD	Pinellas Park	General Office Bldg - mu	\$4,790,000	47,376	1999	\$91,763
12425 28TH ST N	St. Petersburg	General Office Bldg - mu	\$4,775,000	45,591	1985	\$95,216
10055 SEMINOLE BLVD	Seminole	General Office Bldg - mu	\$4,775,000	60,000	1979	\$90,614
2963 GULF TO BAY BLVD	Clearwater	General Office Bldg - mu	\$4,775,000	39,091	1987	\$92,504
401 CORBETT ST	Clearwater	General Office Bldg - mu	\$4,735,000	50,700	1985	\$91,729
34650 US HIGHWAY 19 N	Palm Harbor	General Office Bldg - mu	\$4,600,000	51,833	1984	\$83,134
4023 TAMPA RD	Oldsmar	General Office Bldg - mu	\$4,465,000	41,372	1999	\$78,258
30522 US HIGHWAY 19 N # 105	Palm Harbor	General Office Bldg - mu	\$4,465,000	43,868	1985	\$80,967
2401 WEST BAY DR	Largo	General Office Bldg - mu	\$4,460,000	49,692	1973	\$98,733
475 CENTRAL AVE	St. Petersburg	General Office Bldg - mu	\$4,410,000	39,980	1927	\$88,443
701 94TH AVE N	St. Petersburg	General Office Bldg - mu	\$4,395,000	43,350	1982	\$87,647
9887 4TH ST N	St. Petersburg	General Office Bldg - mu	\$4,390,000	44,718	1984	\$89,101
4033 TAMPA RD	Oldsmar	General Office Bldg - mu	\$4,370,000	40,469	2002	\$76,594
11800 30TH CT N	Pinellas Park	General Office Bldg - mu	\$4,360,000	53,468	1988	\$83,447
9600 KOGER BLVD N	St. Petersburg	General Office Bldg - mu	\$4,360,000	43,304	1972	\$86,949
125 5TH ST S	St. Petersburg	General Office	\$4,326,000	11,048	1979	\$89,141
5858 CENTRAL AVE	St. Petersburg	General Office Bldg - mu	\$4,300,000	37,271	1989	\$85,854
1211 1ST AVE N	St. Petersburg	General Office Bldg - mu	\$4,250,000	26,979	1970	\$85,306
26133 US HIGHWAY 19 N	Clearwater	General Office Bldg - mu	\$4,235,000	44,436	1983	\$82,053
1255 CLEVELAND ST # 400	Clearwater	General Office Bldg - mu	\$4,225,000	49,592	1968	\$85,760
4585 140TH AVE N	Clearwater	General Office Bldg - mu	\$4,225,000	46,970	2001	\$77,633
9620 EXECUTIVE CENTER DR N	St. Petersburg	General Office Bldg - mu	\$4,160,000	39,480	1974	\$82,966
29245 US HIGHWAY 19 N	Clearwater	General Office Bldg - mu	\$4,050,000	35,790	1986	\$78,473

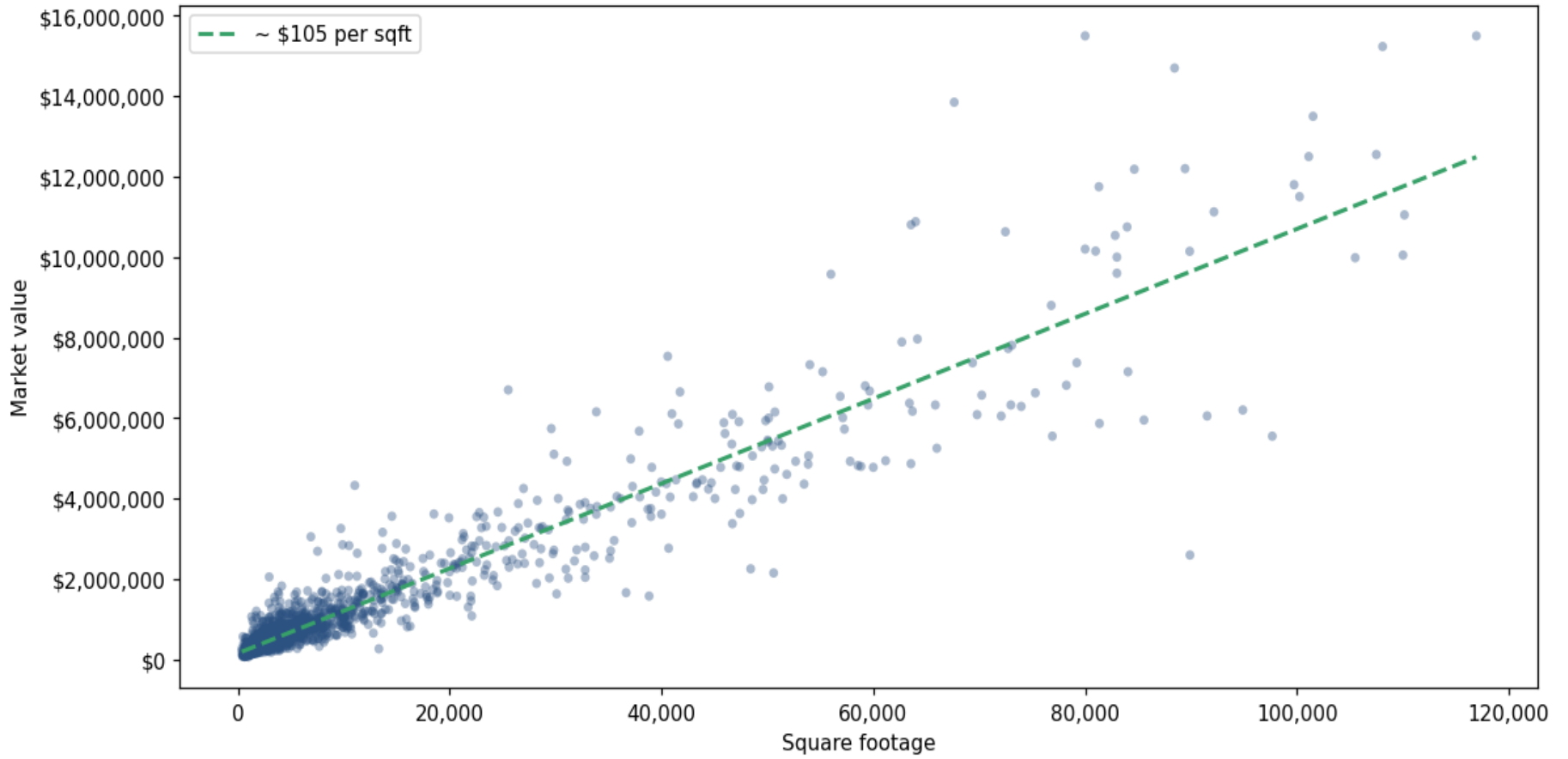
Address	City	Type	Market Value	Sq Ft	Year	Annual Tax
5735 RIO VISTA DR	Largo	General Office Bldg - mu	\$4,045,000	43,000	1997	\$76,898
7901 4TH ST N	St. Petersburg	General Office Bldg - mu	\$4,040,000	37,956	1977	\$77,687
9549 KOGER BLVD N	St. Petersburg	General Office Bldg - mu	\$4,035,000	40,824	1981	\$80,476
600 1ST AVE N	St. Petersburg	General Office Bldg - mu	\$4,000,000	30,252	1966	\$82,418
1150 CLEVELAND ST	Clearwater	General Office Bldg - mu	\$4,000,000	45,053	1984	\$81,390
3491 GANDY BLVD	Pinellas Park	General Office Bldg - mu	\$3,995,000	51,448	1987	\$86,245
750 94TH AVE N	St. Petersburg	General Office Bldg - mu	\$3,995,000	36,140	1984	\$84,161
5800 49TH ST N	St. Petersburg	General Office Bldg - mu	\$3,970,000	48,564	1977	\$91,106
3040 GULF TO BAY BLVD	Clearwater	General Office Bldg - mu	\$3,955,000	28,279	1979	\$77,399
5999 CENTRAL AVE	St. Petersburg	General Office Bldg - mu	\$3,900,000	32,792	1979	\$77,886
36413 US HIGHWAY 19 N	Palm Harbor	General Office Bldg - mu	\$3,875,000	26,487	1984	\$70,045
5959 CENTRAL AVE # 200	St. Petersburg	General Office Bldg - mu	\$3,855,000	32,318	1977	\$77,388
3180 CURLEW RD	Oldsmar	General Office Bldg - mu	\$3,800,000	33,919	2011	\$66,653
13575 58TH ST N	Largo	General Office Bldg - mu	\$3,790,000	35,200	1986	\$72,436
300 EAST BAY DR	Largo	General Office Bldg - mu	\$3,755,000	33,287	1990	\$78,987
1345 WEST BAY DR	Largo	General Office Bldg - mu	\$3,750,000	39,000	1986	\$71,677
9400 4TH ST N	St. Petersburg	General Office Bldg - mu	\$3,735,000	38,720	1980	\$74,500
107 S HAMPTON RD # 200	Clearwater	General Office Bldg - mu	\$3,710,000	31,160	2004	\$71,893
3816 DE SOTO BLVD	Palm Harbor	General Office	\$3,665,000	24,560	1987	\$66,976
35111 US HIGHWAY 19 N	Palm Harbor	General Office Bldg - mu	\$3,665,000	31,263	1988	\$66,254
239 2ND AVE S # A	St. Petersburg	General Office Bldg - mu	\$3,650,000	22,800	1924	\$73,354
14450 46TH ST N	Clearwater	General Office Bldg - mu	\$3,630,000	47,400	1991	\$66,988
2290 4TH ST N	St. Petersburg	General Office	\$3,615,000	18,517	1987	\$73,703
5665 RIO VISTA DR	Largo	General Office Bldg - mu	\$3,610,000	40,000	1997	\$68,639
9455 KOGER BLVD N	St. Petersburg	General Office Bldg - mu	\$3,610,000	33,852	1978	\$72,010

Address	City	Type	Market Value	Sq Ft	Year	Annual Tax
15 8TH ST N	St. Petersburg	General Office	\$3,560,000	14,552	1925	\$70,914
28059 US HIGHWAY 19 N # 206	Clearwater	General Office Bldg - mu	\$3,555,000	39,008	1985	\$62,026
4100 4TH ST N	St. Petersburg	General Office Bldg - mu	\$3,550,000	22,548	1987	\$70,914
9700 DR MARTIN LUTHER KING JR ST	St. Petersburg	General Office Bldg - mu	\$3,535,000	23,230	1988	\$70,516
270 1ST AVE S	St. Petersburg	General Office Bldg - mu	\$3,520,000	19,940	1917	\$70,217
9450 KOGER BLVD N	St. Petersburg	General Office Bldg - mu	\$3,485,000	32,652	1973	\$69,520
5585 RIO VISTA DR	Largo	General Office Bldg - mu	\$3,475,000	31,000	1990	\$66,170
14004 ROOSEVELT BLVD	Clearwater	General Office Bldg - mu	\$3,400,000	37,200	1998	\$62,492
10810 72ND ST	Pinellas Park	General Office	\$3,390,000	27,387	1983	\$64,807
8800 49TH ST	Pinellas Park	General Office Bldg - mu	\$3,375,000	46,700	1974	\$104,187
1499 GULF TO BAY BLVD # 100	Clearwater	General Office Bldg - mu	\$3,310,000	23,454	1981	\$64,104
2570 CORAL LANDINGS BLVD	Palm Harbor	General Office Bldg - mu	\$3,300,000	28,776	1999	\$60,477

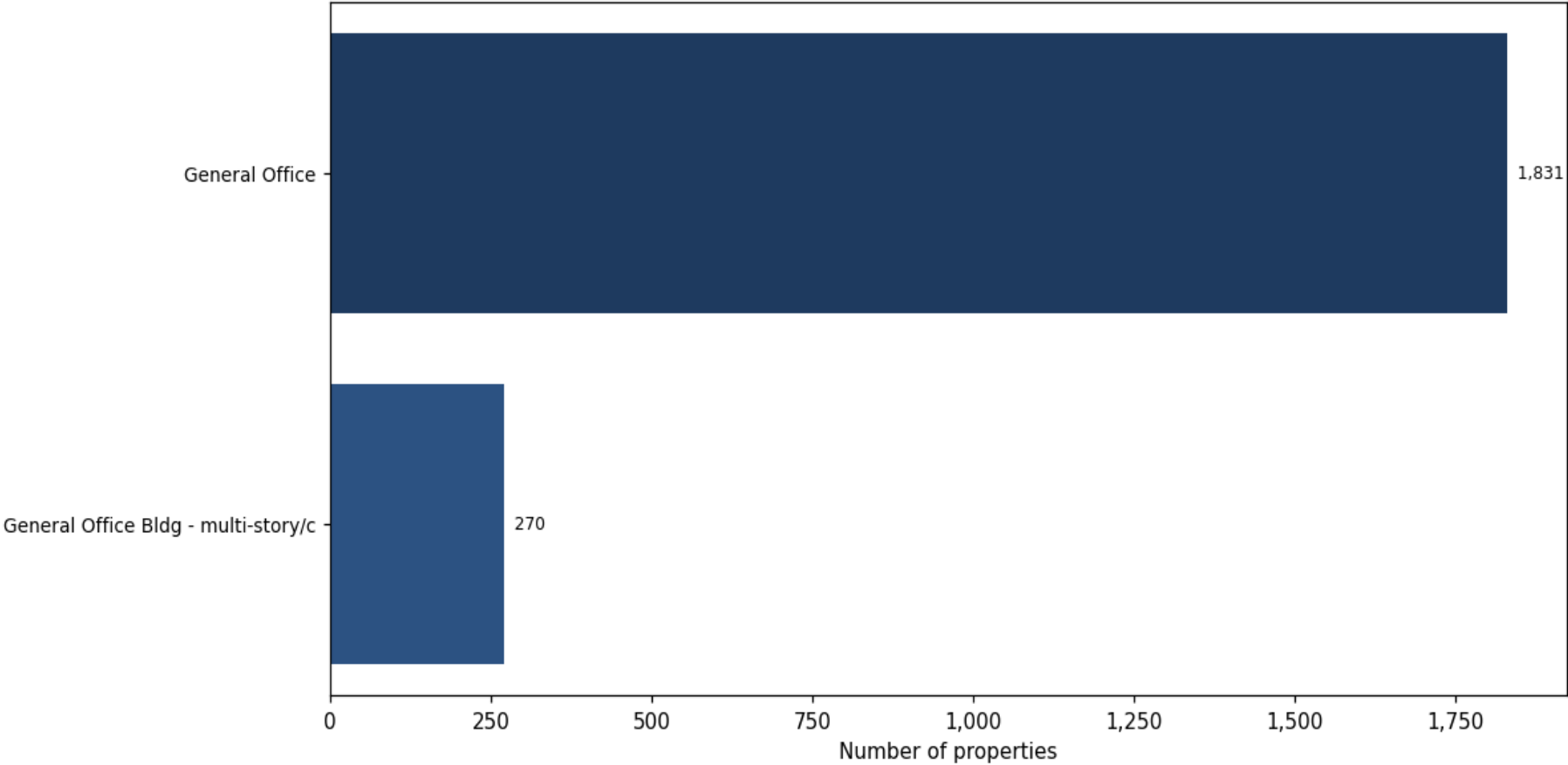
Market value distribution (n=2,101, top 1% trimmed for readability)



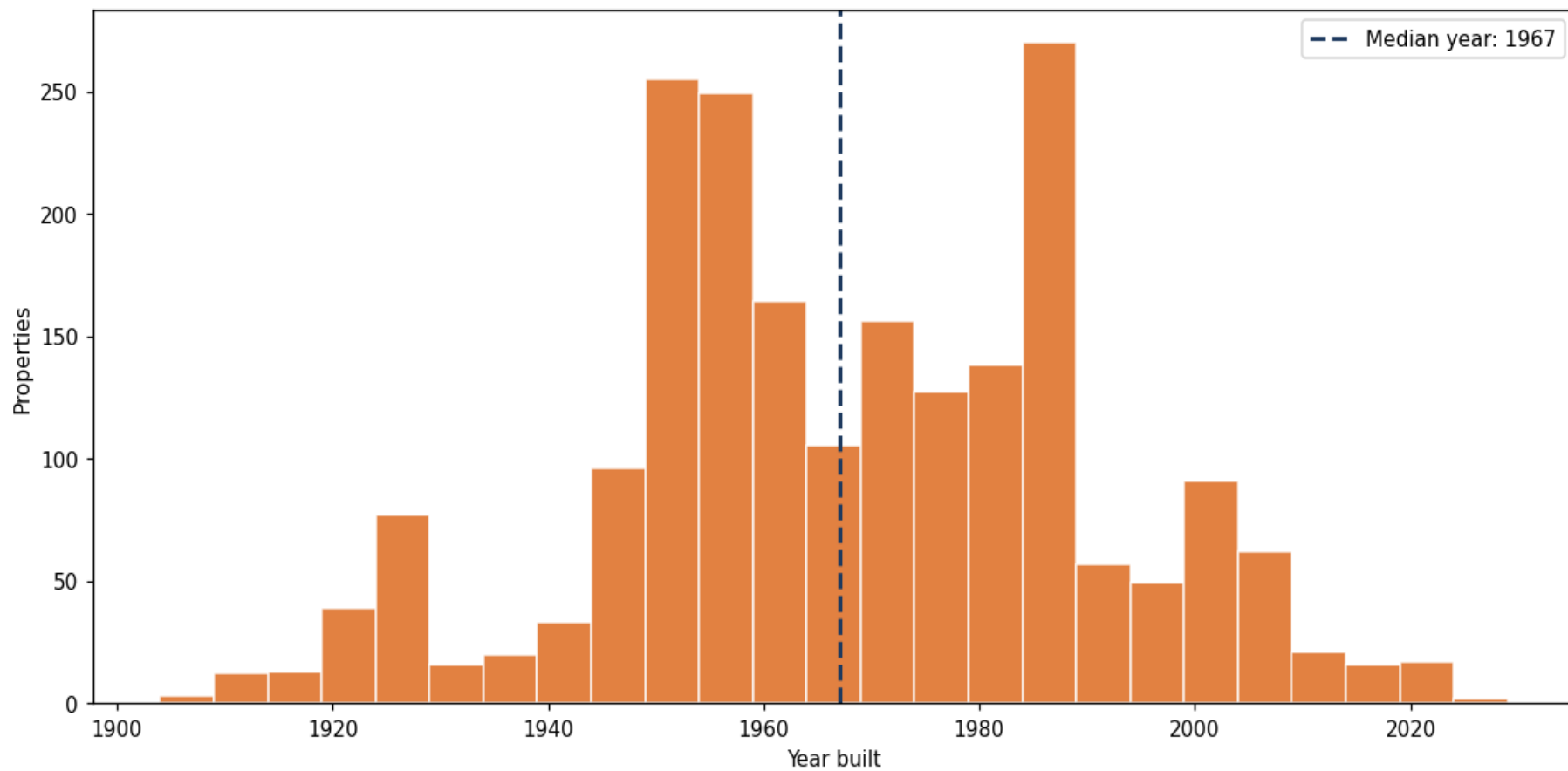
Building size vs. market value (n=2,058, outliers trimmed)



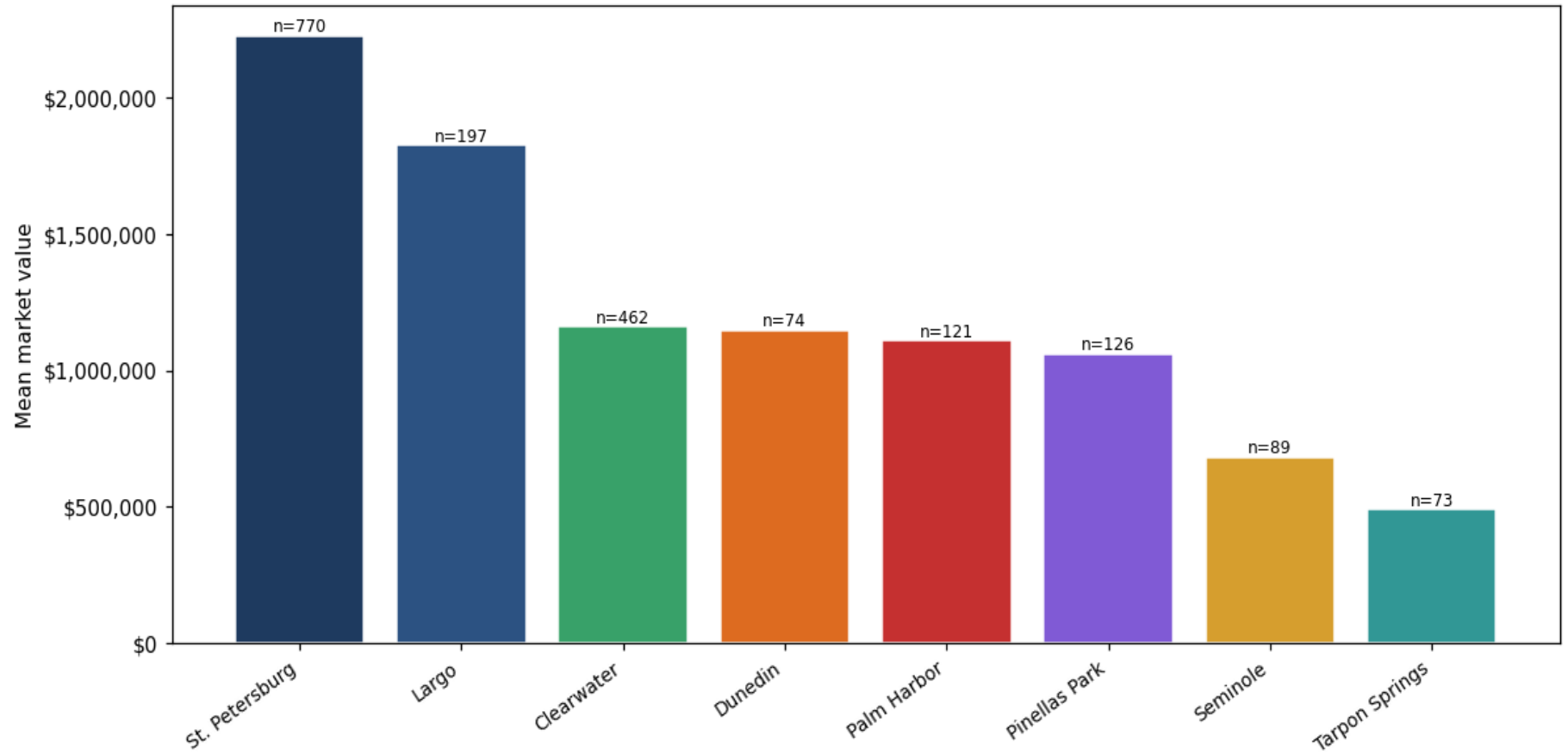
Top property types by count



Year built distribution (5-year buckets)



Mean market value by city (cities with ≥ 50 matches)



Market value vs. assessed value (gap = untaxed appreciation)

