

Pinellas Property Market Report

249 matching properties • May 30, 2026

Filters applied	Headline numbers
Property type: Financial Institution	Properties matched: 249
	Median market value: \$1,409,000
	Mean market value: \$1,503,535
	Min / Max: \$571,000 / \$4,568,369
	Mean square footage: 5,163

Top 200 properties by market value

Address	City	Type	Market Value	Sq Ft	Year	Annual Tax
423 MANDALAY AVE	Clearwater	Financial Institution	\$4,568,369	13,426	1964	\$94,835
350 EAST BAY DR	Largo	Financial Institution	\$4,135,000	12,119	1987	\$78,512
510 CENTRAL AVE	St. Petersburg	Financial Institution	\$3,950,000	7,590	2013	\$78,683
7796 113TH ST	Seminole	Financial Institution	\$3,699,000	3,481	2017	\$58,986
715 S FT HARRISON AVE	Clearwater	Financial Institution	\$3,395,000	15,056	2007	\$65,701
32845 US HIGHWAY 19 N	Palm Harbor	Financial Institution	\$3,095,000	15,708	1996	\$55,874
1200 4TH ST N	St. Petersburg	Financial Institution	\$2,985,000	12,184	2006	\$59,460
2400 GULF TO BAY BLVD	Clearwater	Financial Institution	\$2,745,000	10,404	2017	\$53,122
14805 GULF BLVD	Madeira Beach	Financial Institution	\$2,730,000	4,580	1993	\$44,273
2201 66TH ST N	St. Petersburg	Financial Institution	\$2,711,000	9,148	2006	\$54,002
5900 CENTRAL AVE	St. Petersburg	Financial Institution	\$2,696,000	7,208	2021	\$53,704
1640 GULF TO BAY BLVD	Clearwater	Financial Institution	\$2,670,000	17,684	1971	\$51,670
10751 ULMERTON RD	Largo	Financial Institution	\$2,615,500	10,080	1999	\$49,661

Address	City	Type	Market Value	Sq Ft	Year	Annual Tax
33451 US HIGHWAY 19 N	Palm Harbor	Financial Institution	\$2,585,000	21,092	1974	\$46,667
7555 DR MARTIN LUTHER KING JR ST	St. Petersburg	Financial Institution	\$2,562,500	9,858	1972	\$51,044
555 MANDALAY AVE	Clearwater	Financial Institution	\$2,556,000	3,760	1962	\$49,464
2501 WEST BAY DR	Largo	Financial Institution	\$2,530,000	1,980	2023	\$48,038
2520 COUNTRYSIDE BLVD	Clearwater	Financial Institution	\$2,525,000	11,436	1977	\$48,864
9700 KOGER BLVD N	St. Petersburg	Financial Institution	\$2,503,000	7,856	2007	\$49,859
910 E TARPON AVE	Tarpon Springs	Financial Institution	\$2,495,000	12,540	1972	\$46,999
6300 4TH ST N	St. Petersburg	Financial Institution	\$2,489,000	9,600	2000	\$49,580
825 BROADWAY	Dunedin	Financial Institution	\$2,402,500	9,420	1995	\$42,288
1201 BELCHER RD	Dunedin	Financial Institution	\$2,320,000	5,210	2024	\$41,338
3811 4TH ST N	St. Petersburg	Financial Institution	\$2,300,000	5,644	2005	\$45,815
10500 ULMERTON RD	Largo	Financial Institution	\$2,264,500	7,504	1989	\$42,997
6900 PARK BLVD	Pinellas Park	Financial Institution	\$2,256,500	6,636	2004	\$47,351
4875 EAST BAY DR	Largo	Financial Institution	\$2,250,000	2,086	2023	\$42,721
2400 EAST BAY DR	Largo	Financial Institution	\$2,238,500	5,241	2024	\$42,503
8299 DR MARTIN LUTHER KING JR ST	St. Petersburg	Financial Institution	\$2,197,500	6,622	2000	\$43,774
4625 GULF BLVD	St. Pete Beach	Financial Institution	\$2,195,000	4,298	2011	\$34,744
3901 4TH ST N	St. Petersburg	Financial Institution	\$2,110,000	2,772	2022	\$42,031
9190 SEMINOLE BLVD	Seminole	Financial Institution	\$2,100,000	11,448	1980	\$33,488
7800 113TH ST	Seminole	Financial Institution	\$2,095,500	13,576	1972	\$37,609
1101 PASADENA AVE S	South Pasadena	Financial Institution	\$2,089,000	7,630	1965	\$38,944
6100 4TH ST N	St. Petersburg	Financial Institution	\$2,086,000	6,864	1975	\$41,552
565 1ST AVE S	St. Petersburg	Financial Institution	\$2,040,085	495	1993	\$41,992
1042 MAIN ST	Dunedin	Financial Institution	\$2,015,000	13,515	1973	\$35,467
3994 TAMPA RD	Oldsmar	Financial Institution	\$1,985,000	4,096	2002	\$34,772

Address	City	Type	Market Value	Sq Ft	Year	Annual Tax
1617 GULF TO BAY BLVD	Clearwater	Financial Institution	\$1,980,000	8,543	2006	\$38,317
7105 PARK BLVD	Pinellas Park	Financial Institution	\$1,923,000	5,322	2006	\$40,353
12046 INDIAN ROCKS RD	Largo	Financial Institution	\$1,915,000	27,428	1964	\$36,360
3740 4TH ST N	St. Petersburg	Financial Institution	\$1,895,000	4,524	2014	\$37,748
12580 SEMINOLE BLVD	Largo	Financial Institution	\$1,885,500	4,770	2018	\$35,800
33715 US HIGHWAY 19 N	Palm Harbor	Financial Institution	\$1,875,000	8,792	1979	\$33,849
927 4TH ST N	St. Petersburg	Financial Institution	\$1,857,500	4,552	2013	\$37,001
301 38TH AVE N	St. Petersburg	Financial Institution	\$1,849,000	7,371	1969	\$36,832
1125 EAST BAY DR	Largo	Financial Institution	\$1,842,500	7,475	2007	\$34,984
1300 66TH ST N	St. Petersburg	Financial Institution	\$1,838,750	5,836	1977	\$36,627
7100 US HIGHWAY 19 N	Pinellas Park	Financial Institution	\$1,800,000	4,606	2005	\$37,772
1150 ACHIEVA WAY	Dunedin	Financial Institution	\$1,795,000	5,270	2010	\$31,595
30500 US HIGHWAY 19 N	Palm Harbor	Financial Institution	\$1,795,000	4,242	2012	\$32,405
2646 4TH ST N	St. Petersburg	Financial Institution	\$1,795,000	4,010	2004	\$35,756
413 62ND AVE N	St. Petersburg	Financial Institution	\$1,776,250	5,128	2011	\$35,382
710 E TARPON AVE	Tarpon Springs	Financial Institution	\$1,762,500	8,630	1985	\$33,201
400 COREY AVE	St. Pete Beach	Financial Institution	\$1,762,460	11,655	1963	\$29,114
6600 CENTRAL AVE	St. Petersburg	Financial Institution	\$1,755,000	9,110	1962	\$34,959
182 37TH AVE N	St. Petersburg	Financial Institution	\$1,745,000	5,781	1999	\$34,760
3601 34TH ST N	St. Petersburg	Financial Institution	\$1,742,500	5,480	1999	\$34,710
6801 SEMINOLE BLVD	Seminole	Financial Institution	\$1,738,000	10,904	1972	\$27,715
5250 EAST BAY DR	Largo	Financial Institution	\$1,735,000	9,067	1965	\$32,943
4300 PARK BLVD	Pinellas Park	Financial Institution	\$1,725,000	5,072	2014	\$36,198
333 2ND AVE S	St. Petersburg	Financial Institution	\$1,725,000	464	2002	\$36,353
9001 BELCHER RD	Pinellas Park	Financial Institution	\$1,725,000	6,410	2002	\$36,198

Address	City	Type	Market Value	Sq Ft	Year	Annual Tax
50 ROSERY RD NW	Largo	Financial Institution	\$1,710,000	5,004	2007	\$32,468
2180 4TH ST N	St. Petersburg	Financial Institution	\$1,710,000	4,148	1974	\$34,063
7405 SEMINOLE BLVD	Seminole	Financial Institution	\$1,706,000	10,003	1962	\$27,205
5200 EAST BAY DR	Largo	Financial Institution	\$1,705,000	12,924	1972	\$32,373
1275 PINELLAS BAYWAY	Tierra Verde	Financial Institution	\$1,705,000	7,560	1999	\$28,683
26627 US HIGHWAY 19 N	Clearwater	Financial Institution	\$1,695,000	5,133	1984	\$32,802
26417 US HIGHWAY 19 N	Clearwater	Financial Institution	\$1,695,000	8,300	1975	\$32,802
7600 SEMINOLE BLVD	Seminole	Financial Institution	\$1,685,000	6,767	1998	\$26,870
601 MAIN ST	Safety Harbor	Financial Institution	\$1,679,100	2,688	1976	\$29,245
3131 66TH ST N	St. Petersburg	Financial Institution	\$1,665,500	9,802	1969	\$33,176
1911 N BELCHER RD	Clearwater	Financial Institution	\$1,660,000	6,100	1989	\$32,125
4015 TAMPA RD	Oldsmar	Financial Institution	\$1,657,500	4,076	2006	\$29,035
100 34TH ST N	St. Petersburg	Financial Institution	\$1,656,500	3,575	2004	\$32,997
1610 S MISSOURI AVE	Clearwater	Financial Institution	\$1,655,000	5,963	1995	\$32,028
3976 PARK BLVD	Pinellas Park	Financial Institution	\$1,655,000	4,475	2007	\$34,729
3801 49TH ST N	St. Petersburg	Financial Institution	\$1,651,000	8,024	2003	\$32,887
525 INDIAN ROCKS RD N	Belleair Bluffs	Financial Institution	\$1,650,500	7,190	2001	\$31,058
12360 INDIAN ROCKS RD	Largo	Financial Institution	\$1,645,000	8,260	1986	\$31,234
33075 US HIGHWAY 19 N	Palm Harbor	Financial Institution	\$1,615,000	5,081	1994	\$29,155
13361 49TH ST N	Clearwater	Financial Institution	\$1,608,500	4,300	2009	\$29,521
41206 US HIGHWAY 19 N	Tarpon Springs	Financial Institution	\$1,607,500	4,323	2012	\$30,281
2100 MAIN ST	Dunedin	Financial Institution	\$1,602,500	4,867	1977	\$28,207
2710 GULF TO BAY BLVD	Clearwater	Financial Institution	\$1,595,000	4,126	2008	\$30,867
14040 WALSINGHAM RD	Largo	Financial Institution	\$1,592,500	3,286	2006	\$30,237
2551 SUNSET POINT RD	Clearwater	Financial Institution	\$1,587,500	12,450	1971	\$30,722

Address	City	Type	Market Value	Sq Ft	Year	Annual Tax
400 16TH ST N	St. Petersburg	Financial Institution	\$1,570,453	3,922	1978	\$31,283
13883 WALSINGHAM RD	Largo	Financial Institution	\$1,562,500	4,374	2012	\$29,668
101 FEDERAL PL	Tarpon Springs	Financial Institution	\$1,555,000	8,899	1965	\$29,292
2800 ALT 19	Palm Harbor	Financial Institution	\$1,555,000	4,259	2012	\$28,072
1080 KEENE RD	Dunedin	Financial Institution	\$1,550,000	4,380	1998	\$27,283
10980 BELCHER RD S	Pinellas Park	Financial Institution	\$1,547,500	4,519	2017	\$29,584
5100 PARK BLVD	Pinellas Park	Financial Institution	\$1,538,000	6,028	1958	\$32,274
5801 49TH ST N	St. Petersburg	Financial Institution	\$1,530,000	10,000	1980	\$35,067
4301 34TH ST S	St. Petersburg	Financial Institution	\$1,528,500	1,998	2023	\$30,447
9655 4TH ST N	St. Petersburg	Financial Institution	\$1,527,500	3,284	1980	\$30,427
2500 N MCMULLEN BOOTH RD	Clearwater	Financial Institution	\$1,525,000	3,868	1980	\$29,512
3033 ENTERPRISE RD E	Safety Harbor	Financial Institution	\$1,525,000	4,319	2011	\$26,561
821 WEST BAY DR	Largo	Financial Institution	\$1,517,500	4,304	2015	\$28,813
2600 EAST BAY DR	Largo	Financial Institution	\$1,512,500	17,794	1975	\$28,718
5250 PARK BLVD	Pinellas Park	Financial Institution	\$1,511,000	4,584	2005	\$31,707
2699 GULF TO BAY BLVD	Clearwater	Financial Institution	\$1,510,000	4,228	2003	\$29,222
2755 ULMERTON RD	St. Petersburg	Financial Institution	\$1,506,000	3,579	2017	\$29,999
5701 38TH AVE N	St. Petersburg	Financial Institution	\$1,500,000	10,077	1972	\$29,880
2508 STATE ROAD 580	Clearwater	Financial Institution	\$1,491,000	4,042	2006	\$25,978
500 4TH ST N	St. Petersburg	Financial Institution	\$1,484,000	3,294	2005	\$29,561
10465 ULMERTON RD	Largo	Financial Institution	\$1,480,500	3,772	2006	\$28,111
3095 54TH AVE S	St. Petersburg	Financial Institution	\$1,477,000	4,813	1976	\$29,421
6599 ULMERTON RD	Largo	Financial Institution	\$1,475,500	4,658	1977	\$26,076
3945 EAST BAY DR	Largo	Financial Institution	\$1,474,000	4,389	2011	\$27,987
6580 GULF BLVD	St. Pete Beach	Financial Institution	\$1,472,500	3,848	1996	\$23,307

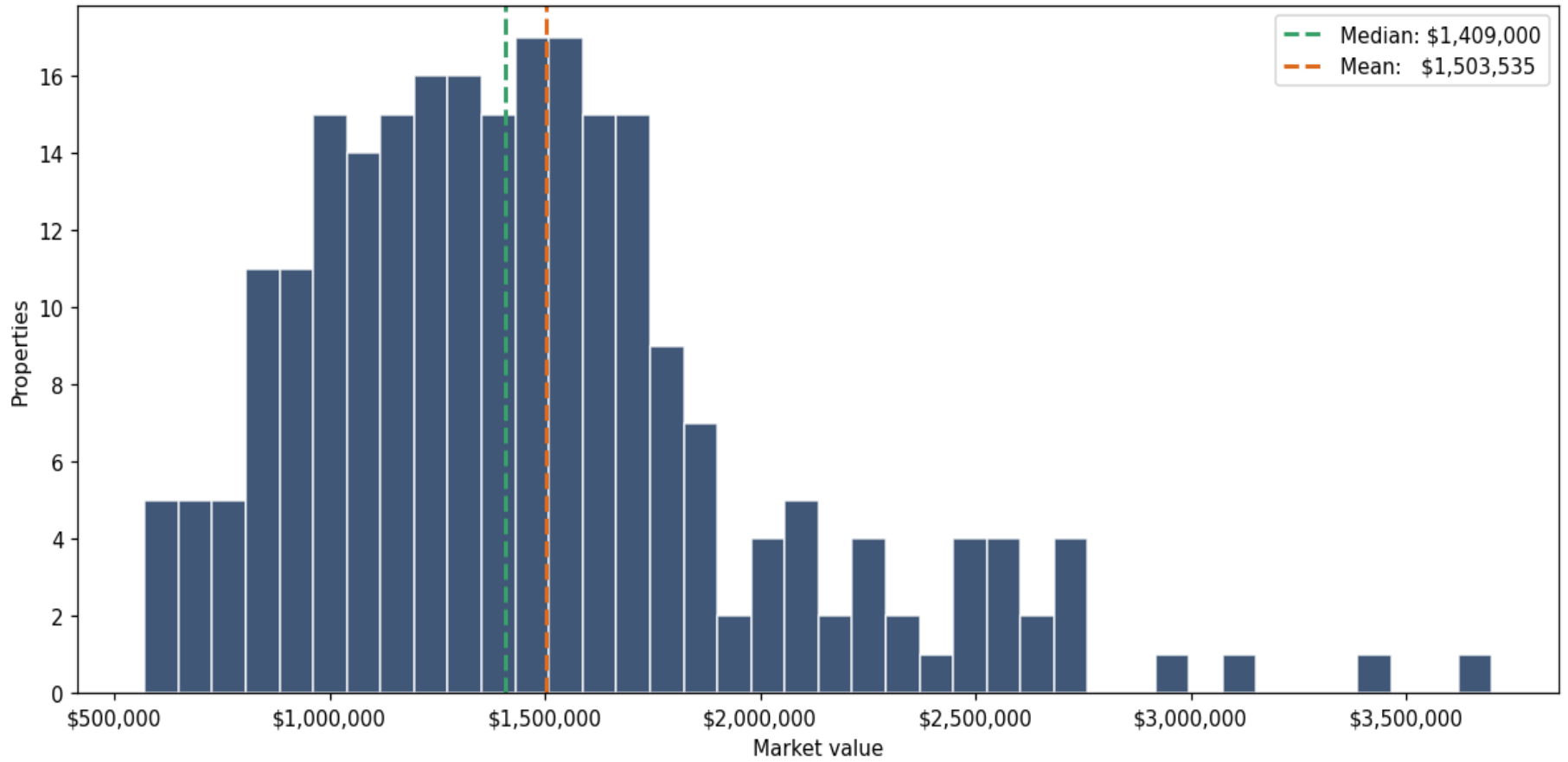
Address	City	Type	Market Value	Sq Ft	Year	Annual Tax
533 S BELCHER RD	Clearwater	Financial Institution	\$1,472,500	4,327	2011	\$28,496
4951 34TH ST S	St. Petersburg	Financial Institution	\$1,472,000	4,329	2012	\$29,322
32491 US HIGHWAY 19 N	Palm Harbor	Financial Institution	\$1,468,000	4,063	2007	\$26,502
7893 113TH ST	Seminole	Financial Institution	\$1,462,500	3,663	2016	\$23,322
6700 22ND AVE N	St. Petersburg	Financial Institution	\$1,462,500	3,619	1981	\$29,133
33805 US HIGHWAY 19 N	Palm Harbor	Financial Institution	\$1,460,000	4,577	1981	\$26,357
2300 SUNSET POINT RD	Clearwater	Financial Institution	\$1,437,500	3,316	2019	\$27,819
655 S BELCHER RD	Clearwater	Financial Institution	\$1,435,000	7,176	1965	\$27,770
7401 PARK BLVD	Pinellas Park	Financial Institution	\$1,425,000	3,782	2006	\$29,902
965 CENTRAL AVE	St. Petersburg	Financial Institution	\$1,420,000	4,200	1926	\$28,286
1475 MCMULLEN BOOTH RD	Safety Harbor	Financial Institution	\$1,411,000	4,446	2012	\$24,576
7770 66TH ST N	Pinellas Park	Financial Institution	\$1,409,000	4,202	2006	\$29,567
2768 GULF TO BAY BLVD	Clearwater	Financial Institution	\$1,400,000	2,838	2014	\$27,093
7323 PARK BLVD	Pinellas Park	Financial Institution	\$1,392,500	3,969	2004	\$29,221
3900 4TH ST N	St. Petersburg	Financial Institution	\$1,385,000	2,450	2016	\$27,589
8250 DR MARTIN LUTHER KING JR ST	St. Petersburg	Financial Institution	\$1,385,000	5,342	1972	\$27,589
2110 GULF TO BAY BLVD	Clearwater	Financial Institution	\$1,382,250	3,253	2017	\$26,750
4018 TAMPA RD	Oldsmar	Financial Institution	\$1,378,500	3,958	2001	\$24,147
13075 WALSINGHAM RD	Largo	Financial Institution	\$1,377,500	4,653	1986	\$24,689
3000 ENTERPRISE RD E	Clearwater	Financial Institution	\$1,377,500	4,264	1981	\$26,658
1299 S MISSOURI AVE	Clearwater	Financial Institution	\$1,365,000	3,654	1998	\$26,416
2145 34TH ST N	St. Petersburg	Financial Institution	\$1,365,000	3,411	1981	\$27,190
3629 11TH AVE N	St. Petersburg	Financial Institution	\$1,356,030	4,528	1997	\$27,012
11281 ULMERTON RD	Largo	Financial Institution	\$1,350,000	4,056	2009	\$25,633
36105 EAST LAKE RD	Palm Harbor	Financial Institution	\$1,350,000	3,938	1996	\$24,370

Address	City	Type	Market Value	Sq Ft	Year	Annual Tax
2800 54TH AVE S	St. Petersburg	Financial Institution	\$1,348,000	4,528	1981	\$26,852
29492 US HIGHWAY 19 N	Clearwater	Financial Institution	\$1,345,000	3,592	2007	\$23,965
4845 4TH ST N	St. Petersburg	Financial Institution	\$1,345,000	3,596	2005	\$26,792
2474 STATE ROAD 580	Clearwater	Financial Institution	\$1,340,000	3,000	1981	\$23,347
401 INDIAN ROCKS RD N	Belleair Bluffs	Financial Institution	\$1,335,000	4,377	1972	\$25,121
11883 INDIAN ROCKS RD	Largo	Financial Institution	\$1,331,000	3,808	2008	\$25,272
1551 S BELCHER RD	Clearwater	Financial Institution	\$1,330,000	8,770	1974	\$23,172
1280 66TH ST N	St. Petersburg	Financial Institution	\$1,312,000	4,200	2013	\$26,135
4105 GULF BLVD	St. Pete Beach	Financial Institution	\$1,302,992	2,112	1977	\$21,816
4315 DUHME RD	Madeira Beach	Financial Institution	\$1,297,500	3,863	2013	\$21,042
1101 S PINELLAS AVE	Tarpon Springs	Financial Institution	\$1,290,000	3,463	2022	\$24,300
2571 COUNTRYSIDE BLVD	Clearwater	Financial Institution	\$1,287,500	4,394	1981	\$24,916
777 PASADENA AVE S	St. Petersburg	Financial Institution	\$1,285,000	3,262	2006	\$25,597
100 EAST LAKE RD	Palm Harbor	Financial Institution	\$1,285,000	3,518	2002	\$23,197
3505 4TH ST N	St. Petersburg	Financial Institution	\$1,270,000	3,752	1988	\$25,298
2845 WEST BAY DR	Belleair Bluffs	Financial Institution	\$1,265,000	4,150	1975	\$23,804
6900 22ND AVE N	St. Petersburg	Financial Institution	\$1,265,000	4,451	1971	\$25,198
2751 54TH AVE S	St. Petersburg	Financial Institution	\$1,264,000	3,834	2007	\$25,179
2580 N MCMULLEN BOOTH RD	Clearwater	Financial Institution	\$1,260,000	3,153	1980	\$24,384
2471 STATE ROAD 580	Clearwater	Financial Institution	\$1,240,000	3,473	2015	\$23,997
4095 TAMPA RD	Oldsmar	Financial Institution	\$1,236,000	3,380	2002	\$21,651
13700 PARK BLVD	Seminole	Financial Institution	\$1,235,000	3,238	1977	\$22,357
1400 PASADENA AVE S	South Pasadena	Financial Institution	\$1,231,750	2,760	2018	\$22,963
3029 ENTERPRISE RD E	Safety Harbor	Financial Institution	\$1,230,000	3,592	1989	\$21,423
6300 CENTRAL AVE	St. Petersburg	Financial Institution	\$1,225,000	3,732	1977	\$24,402

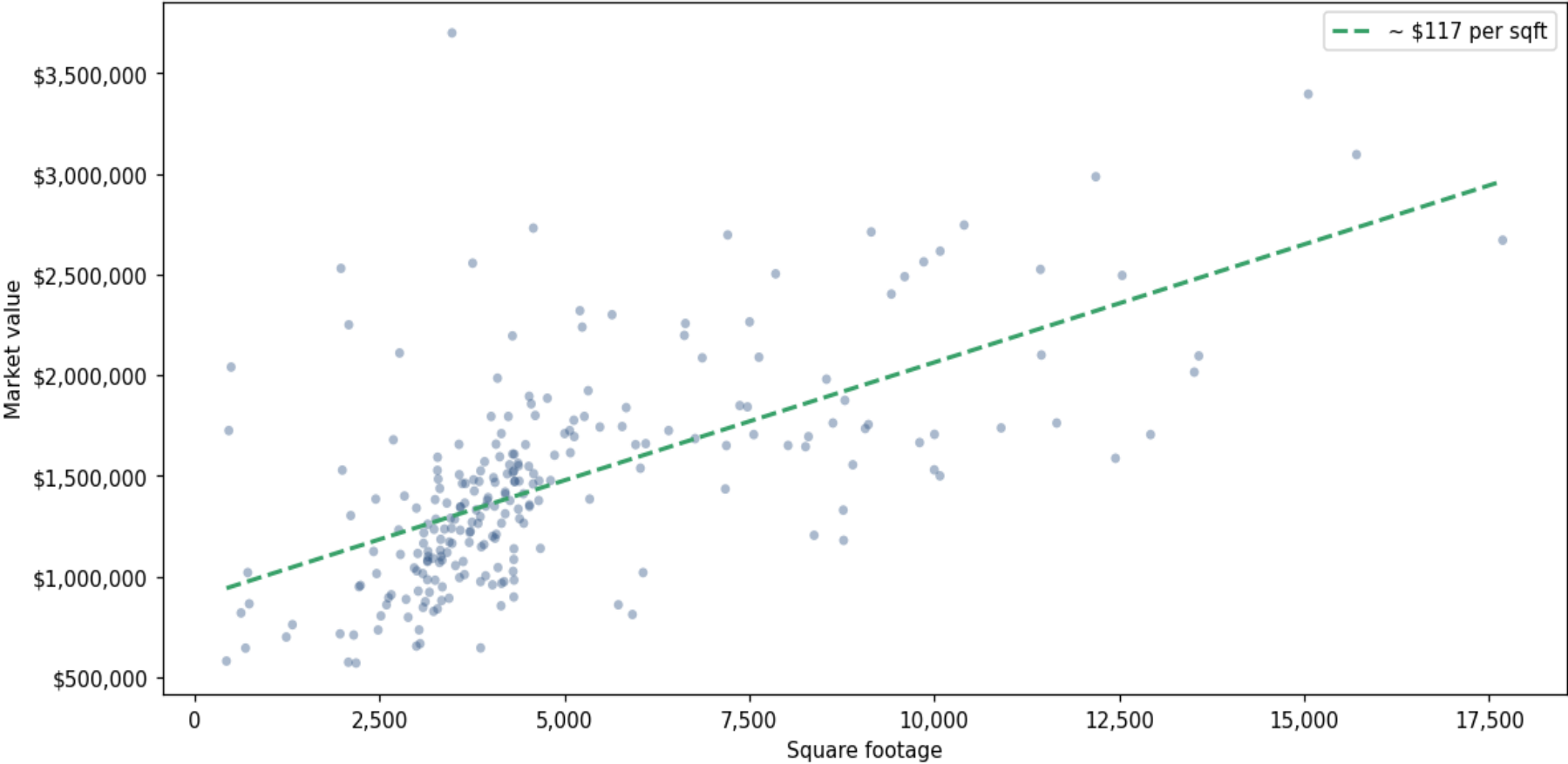
Address	City	Type	Market Value	Sq Ft	Year	Annual Tax
10755 STARKEY RD	Seminole	Financial Institution	\$1,220,000	3,720	2020	\$21,781
4890 RIDGEMOOR BLVD	Palm Harbor	Financial Institution	\$1,217,500	3,100	2017	\$21,978
2575 COUNTRYSIDE BLVD	Clearwater	Financial Institution	\$1,210,000	4,080	1981	\$23,416
8181 54TH AVE N	St. Petersburg	Financial Institution	\$1,205,000	8,376	1974	\$25,369
10200 66TH ST	Pinellas Park	Financial Institution	\$1,200,000	4,030	1982	\$22,941
2498 GULF TO BAY BLVD	Clearwater	Financial Institution	\$1,190,500	4,063	2007	\$23,039
639 S FT HARRISON AVE	Clearwater	Financial Institution	\$1,185,000	3,328	2004	\$22,932
985 PASADENA AVE S	South Pasadena	Financial Institution	\$1,180,000	8,775	1972	\$21,998
4949 RIDGEMOOR BLVD	Palm Harbor	Financial Institution	\$1,171,500	3,445	2004	\$21,148
3132 TAMPA RD	Oldsmar	Financial Institution	\$1,170,000	3,714	1988	\$20,495
33277 US HIGHWAY 19 N	Palm Harbor	Financial Institution	\$1,165,000	3,482	1994	\$21,032
3400 4TH ST N	St. Petersburg	Financial Institution	\$1,165,000	3,096	2001	\$23,206
4584 38TH AVE N	St. Petersburg	Financial Institution	\$1,159,000	3,915	2017	\$23,087
503 S PINELLAS AVE	Tarpon Springs	Financial Institution	\$1,148,000	3,877	2002	\$21,625
1680 GULF TO BAY BLVD	Clearwater	Financial Institution	\$1,140,000	4,676	1975	\$22,062
12933 WALSINGHAM RD	Largo	Financial Institution	\$1,138,000	4,318	1986	\$20,396
2755 ALT 19	Crystal Beach	Financial Institution	\$1,130,000	3,322	2007	\$20,400
3500 EAST LAKE RD	Palm Harbor	Financial Institution	\$1,125,000	2,421	1983	\$20,308
14147 WALSINGHAM RD	Largo	Financial Institution	\$1,125,000	3,157	1980	\$21,361
35320 US HIGHWAY 19 N	Palm Harbor	Financial Institution	\$1,120,000	3,414	1986	\$20,219
1600 CENTRAL AVE	St. Petersburg	Financial Institution	\$1,115,000	3,018	2018	\$22,210
2551 TARPON WOODS BLVD	Palm Harbor	Financial Institution	\$1,110,000	2,784	1980	\$20,038
3320 EAST BAY DR	Largo	Financial Institution	\$1,100,000	3,332	2006	\$20,886
3100 TAMPA RD	Palm Harbor	Financial Institution	\$1,099,500	3,158	2008	\$17,650
6180 CENTRAL AVE	St. Petersburg	Financial Institution	\$1,091,000	3,222	2009	\$21,732

Address	City	Type	Market Value	Sq Ft	Year	Annual Tax
1300 TAMPA RD	Palm Harbor	Financial Institution	\$1,085,000	4,316	1984	\$19,587
2201 DREW ST	Clearwater	Financial Institution	\$1,082,000	3,348	1989	\$20,939
600 EAST LAKE RD	Palm Harbor	Financial Institution	\$1,080,000	3,150	1990	\$19,496
4325 PARK BLVD	Pinellas Park	Financial Institution	\$1,075,000	3,632	1980	\$22,558
900 S FT HARRISON AVE	Clearwater	Financial Institution	\$1,075,000	3,150	2018	\$20,804
7800 SEMINOLE BLVD	Seminole	Financial Institution	\$1,070,000	3,312	2003	\$17,063
1698 MISSOURI AVE N	Largo	Financial Institution	\$1,055,000	3,528	1998	\$20,032
3400 TAMPA RD	Palm Harbor	Financial Institution	\$1,045,000	4,102	2007	\$18,865
1100 EAST LAKE RD	Palm Harbor	Financial Institution	\$1,043,000	2,970	1995	\$18,828
3463 22ND AVE N	St. Petersburg	Financial Institution	\$1,028,500	3,005	2002	\$20,487
2781 WEST BAY DR	Belleair Bluffs	Financial Institution	\$1,026,000	4,307	1967	\$19,306
600 1ST AVE S	St. Petersburg	Financial Institution	\$1,020,085	720	1975	\$20,997

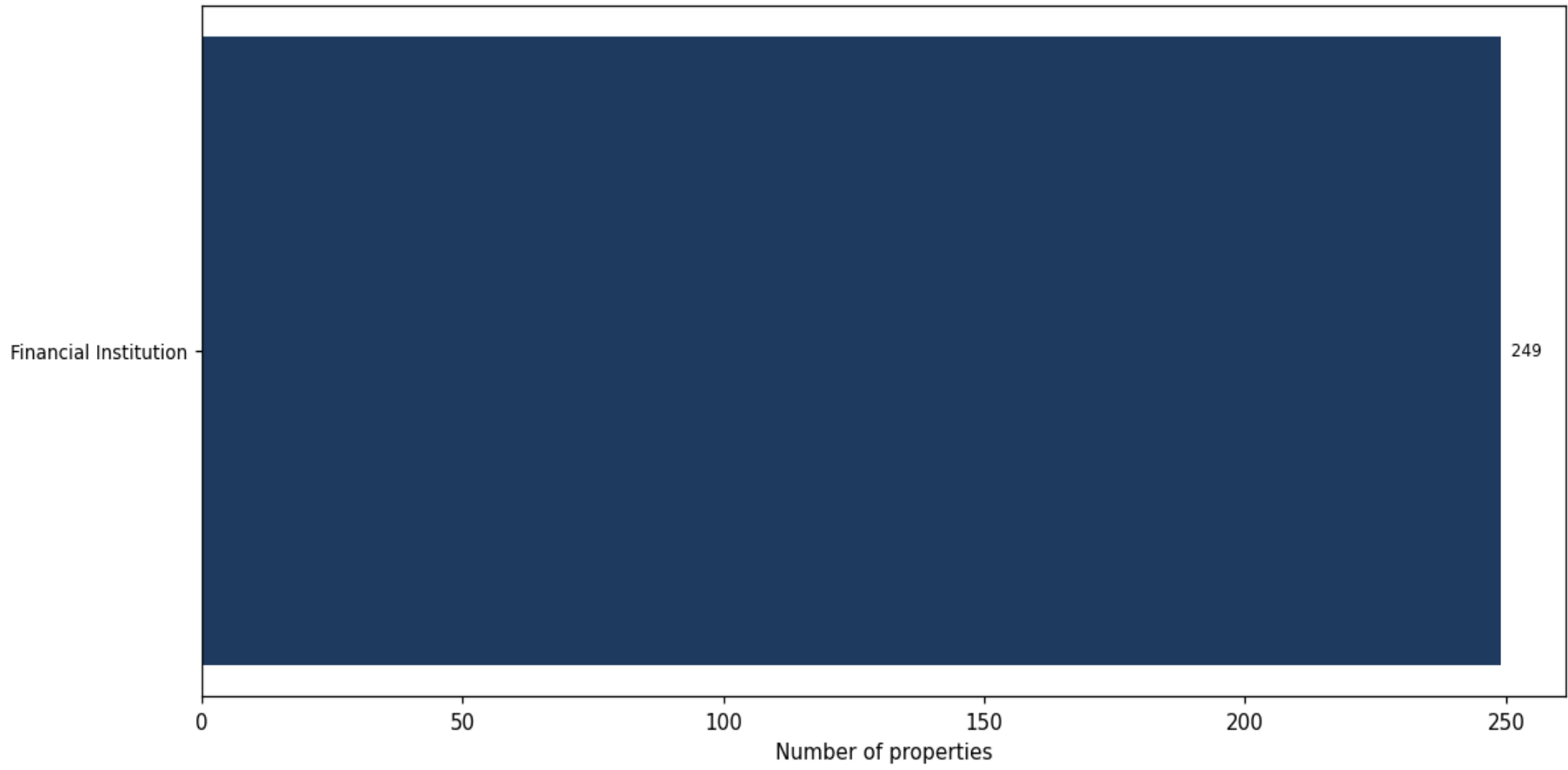
Market value distribution (n=249, top 1% trimmed for readability)



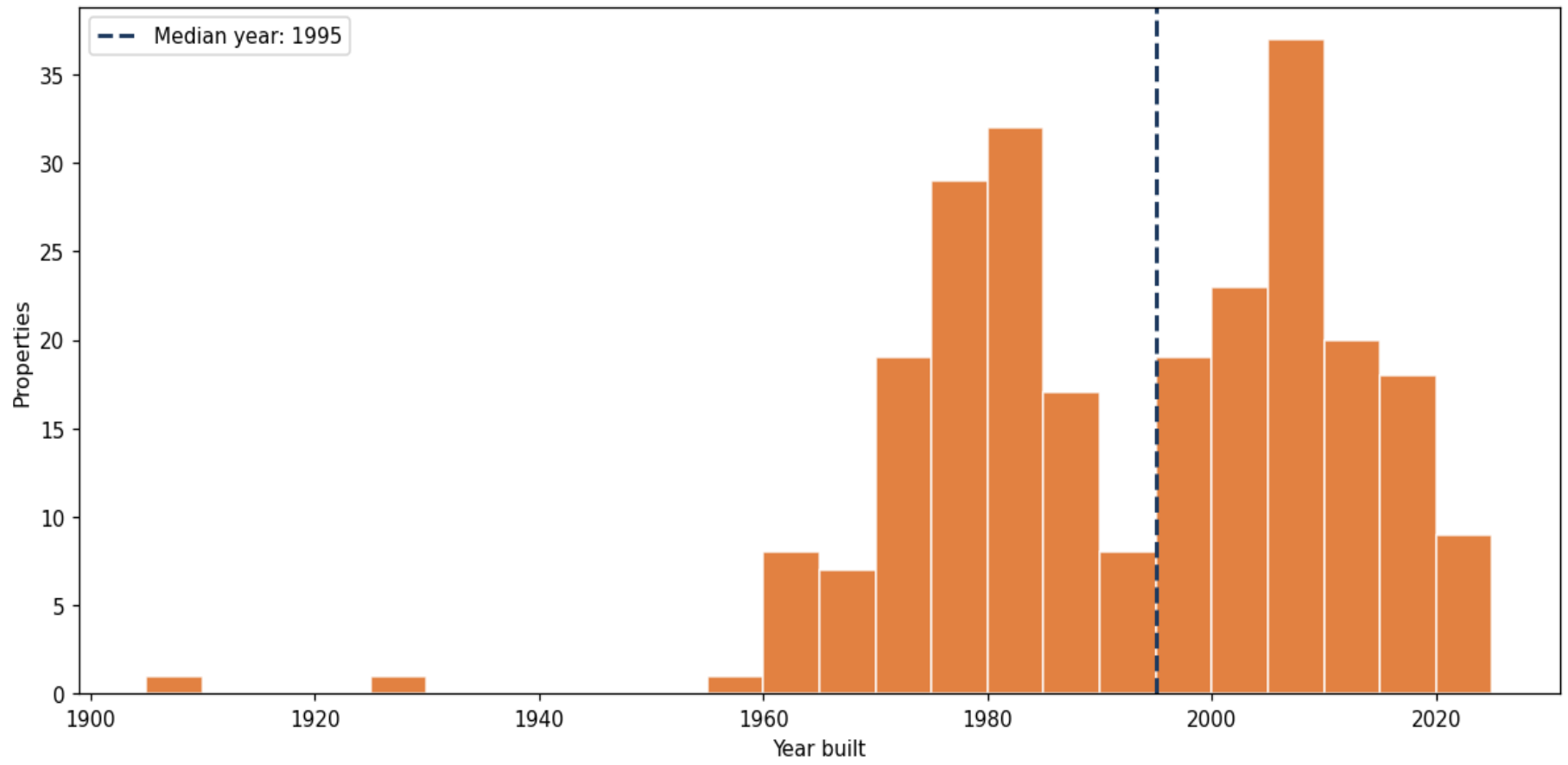
Building size vs. market value (n=243, outliers trimmed)



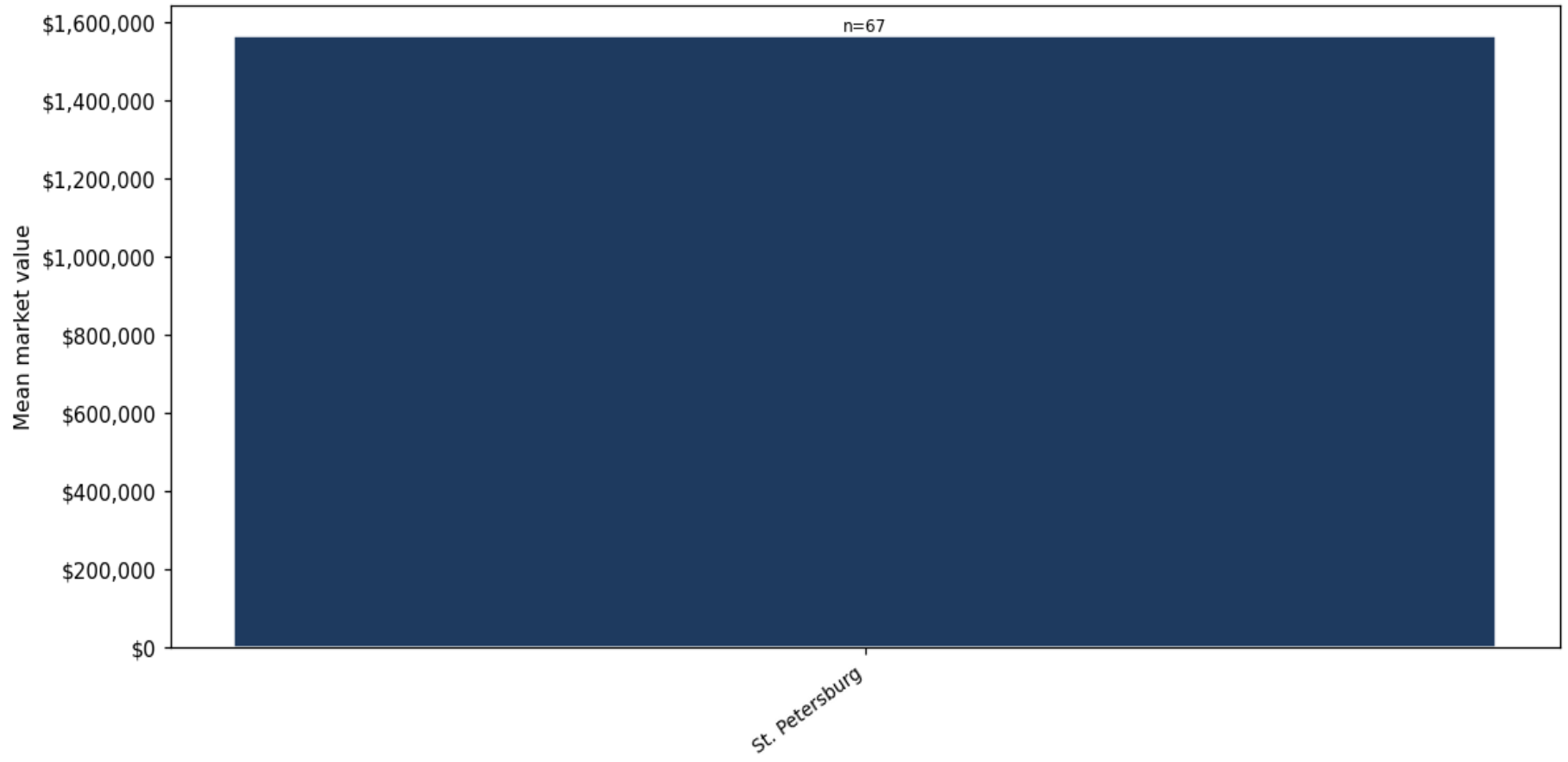
Top property types by count



Year built distribution (5-year buckets)



Mean market value by city (cities with ≥ 50 matches)



Market value vs. assessed value (gap = untaxed appreciation)

