

Pinellas Property Market Report

3,291 matching properties • May 31, 2026

Filters applied	Headline numbers
Property type: Condo Com Apartments	Properties matched: 3,291
	Median market value: \$148,004
	Mean market value: \$161,943
	Min / Max: \$48,433 / \$4,200,000
	Mean square footage: 994

Top 200 properties by market value

Address	City	Type	Market Value	Sq Ft	Year	Annual Tax
420 4TH ST S	St. Petersburg	Condo Com Apartments	\$4,200,000	106,504	2014	\$85,889
300 4TH AVE S	St. Petersburg	Condo Com Apartments	\$3,700,000	55,144	2014	\$75,700
3890 34TH AVE S # 1A	St. Petersburg	Condo Com Apartments	\$2,223,706	20,929	1985	\$49,611
512 2ND ST # 3	Indian Rocks Beach	Condo Com Apartments	\$479,296	3,650	1981	\$12,307
17105 GULF BLVD # 413	North Redington Beach	Condo Com Apartments	\$370,982	2,030	1971	\$8,329
17105 GULF BLVD # 414	North Redington Beach	Condo Com Apartments	\$370,982	2,030	1971	\$8,329
4971 CAMBRIDGE BLVD # 203	Palm Harbor	Condo Com Apartments	\$342,023	1,705	2002	\$5,429
4953 CAMBRIDGE BLVD # 202	Palm Harbor	Condo Com Apartments	\$342,023	1,705	2002	\$5,429
4930 CAMBRIDGE BLVD # 202	Palm Harbor	Condo Com Apartments	\$342,023	1,705	2002	\$5,429
3637 NEWCASTLE CT # 202	Palm Harbor	Condo Com Apartments	\$342,023	1,705	2002	\$5,429
4971 CAMBRIDGE BLVD # 202	Palm Harbor	Condo Com Apartments	\$342,023	1,705	2002	\$5,429
4935 CAMBRIDGE BLVD # 201	Palm Harbor	Condo Com Apartments	\$342,023	1,705	2002	\$5,429
4935 CAMBRIDGE BLVD # 204	Palm Harbor	Condo Com Apartments	\$342,023	1,705	2002	\$5,429

Address	City	Type	Market Value	Sq Ft	Year	Annual Tax
3637 NEWCASTLE CT # 203	Palm Harbor	Condo Com Apartments	\$342,023	1,705	2002	\$5,429
4930 CAMBRIDGE BLVD # 203	Palm Harbor	Condo Com Apartments	\$342,023	1,705	2002	\$5,429
4953 CAMBRIDGE BLVD # 203	Palm Harbor	Condo Com Apartments	\$342,023	1,705	2002	\$5,429
434 SKINNER BLVD # 206	Dunedin	Condo Com Apartments	\$315,000	1,844	2012	\$5,932
434 SKINNER BLVD # 205	Dunedin	Condo Com Apartments	\$315,000	1,844	2012	\$5,932
4923 CAMBRIDGE BLVD # 201	Palm Harbor	Condo Com Apartments	\$309,124	1,541	2002	\$4,906
4935 CAMBRIDGE BLVD # 202	Palm Harbor	Condo Com Apartments	\$309,124	1,541	2002	\$4,906
4923 CAMBRIDGE BLVD # 202	Palm Harbor	Condo Com Apartments	\$309,124	1,541	2002	\$4,906
4935 CAMBRIDGE BLVD # 203	Palm Harbor	Condo Com Apartments	\$309,124	1,541	2002	\$4,906
4983 CAMBRIDGE BLVD # 201	Palm Harbor	Condo Com Apartments	\$309,124	1,541	2002	\$4,906
4953 CAMBRIDGE BLVD # 204	Palm Harbor	Condo Com Apartments	\$309,124	1,541	2002	\$4,906
4923 CAMBRIDGE BLVD # 204	Palm Harbor	Condo Com Apartments	\$309,124	1,541	2002	\$4,906
4914 CAMBRIDGE BLVD # 202	Palm Harbor	Condo Com Apartments	\$309,124	1,541	2002	\$4,906
4930 CAMBRIDGE BLVD # 201	Palm Harbor	Condo Com Apartments	\$309,124	1,541	2002	\$4,906
4914 CAMBRIDGE BLVD # 204	Palm Harbor	Condo Com Apartments	\$309,124	1,541	2002	\$4,906
4954 BARCLAY DR # 202	Palm Harbor	Condo Com Apartments	\$309,124	1,541	2002	\$4,906
4983 CAMBRIDGE BLVD # 204	Palm Harbor	Condo Com Apartments	\$309,124	1,541	2002	\$4,906
3637 NEWCASTLE CT # 201	Palm Harbor	Condo Com Apartments	\$309,124	1,541	2002	\$4,906
4914 CAMBRIDGE BLVD # 201	Palm Harbor	Condo Com Apartments	\$309,124	1,541	2002	\$4,906
4953 CAMBRIDGE BLVD # 201	Palm Harbor	Condo Com Apartments	\$309,124	1,541	2002	\$4,906
4971 CAMBRIDGE BLVD # 201	Palm Harbor	Condo Com Apartments	\$309,124	1,541	2002	\$4,906
4923 CAMBRIDGE BLVD # 203	Palm Harbor	Condo Com Apartments	\$309,124	1,541	2002	\$4,906
3524 HAMPSHIRE CT # 204	Palm Harbor	Condo Com Apartments	\$309,124	1,541	2002	\$4,906
3524 HAMPSHIRE CT # 201	Palm Harbor	Condo Com Apartments	\$309,124	1,541	2002	\$4,906
4971 CAMBRIDGE BLVD # 204	Palm Harbor	Condo Com Apartments	\$309,124	1,541	2002	\$4,906

Address	City	Type	Market Value	Sq Ft	Year	Annual Tax
3637 NEWCASTLE CT # 204	Palm Harbor	Condo Com Apartments	\$309,124	1,541	2002	\$4,906
4954 BARCLAY DR # 203	Palm Harbor	Condo Com Apartments	\$309,124	1,541	2002	\$4,906
4930 CAMBRIDGE BLVD # 204	Palm Harbor	Condo Com Apartments	\$309,124	1,541	2002	\$4,906
4983 CAMBRIDGE BLVD # 202	Palm Harbor	Condo Com Apartments	\$309,124	1,541	2002	\$4,906
4983 CAMBRIDGE BLVD # 203	Palm Harbor	Condo Com Apartments	\$309,124	1,541	2002	\$4,906
4914 CAMBRIDGE BLVD # 203	Palm Harbor	Condo Com Apartments	\$309,124	1,541	2002	\$4,906
223 DOLPHIN PT # 10	Clearwater	Condo Com Apartments	\$304,804	929	1970	\$7,259
223 DOLPHIN PT # 5	Clearwater	Condo Com Apartments	\$304,804	929	1970	\$7,259
3751 EXETER CT # 103	Palm Harbor	Condo Com Apartments	\$301,344	1,468	2004	\$4,674
3850 ASHWICK CT # 108	Palm Harbor	Condo Com Apartments	\$301,344	1,468	2004	\$4,674
5121 MANCHESTER CT # 106	Palm Harbor	Condo Com Apartments	\$301,344	1,468	2004	\$4,674
3787 EXETER CT # 103	Palm Harbor	Condo Com Apartments	\$301,344	1,468	2004	\$4,674
3993 HASTINGS CT # 103	Palm Harbor	Condo Com Apartments	\$301,344	1,468	2004	\$4,674
3751 EXETER CT # 108	Palm Harbor	Condo Com Apartments	\$301,344	1,468	2004	\$4,674
3764 EXETER CT # 106	Palm Harbor	Condo Com Apartments	\$301,344	1,468	2004	\$4,674
3839 ASHWICK CT # 103	Palm Harbor	Condo Com Apartments	\$301,344	1,468	2004	\$4,674
3962 HASTINGS CT # 106	Palm Harbor	Condo Com Apartments	\$301,344	1,468	2004	\$4,674
5144 MANCHESTER CT # 103	Palm Harbor	Condo Com Apartments	\$301,344	1,468	2004	\$4,674
3905 HASTINGS CT # 103	Palm Harbor	Condo Com Apartments	\$301,344	1,468	2004	\$4,674
3775 EXETER CT # 106	Palm Harbor	Condo Com Apartments	\$301,344	1,468	2004	\$4,674
3850 ASHWICK CT # 106	Palm Harbor	Condo Com Apartments	\$301,344	1,468	2004	\$4,674
3763 EXETER CT # 106	Palm Harbor	Condo Com Apartments	\$301,344	1,468	2004	\$4,674
5121 MANCHESTER CT # 103	Palm Harbor	Condo Com Apartments	\$301,344	1,468	2004	\$4,674
5062 MANCHESTER CT # 103	Palm Harbor	Condo Com Apartments	\$301,344	1,468	2004	\$4,674
3961 HASTINGS CT # 103	Palm Harbor	Condo Com Apartments	\$301,344	1,468	2004	\$4,674

Address	City	Type	Market Value	Sq Ft	Year	Annual Tax
3939 HASTINGS CT # 103	Palm Harbor	Condo Com Apartments	\$301,344	1,468	2004	\$4,674
3883 HASTINGS CT # 103	Palm Harbor	Condo Com Apartments	\$301,344	1,468	2004	\$4,674
3961 HASTINGS CT # 106	Palm Harbor	Condo Com Apartments	\$301,344	1,468	2004	\$4,674
3764 EXETER CT # 103	Palm Harbor	Condo Com Apartments	\$301,344	1,468	2004	\$4,674
3828 ASHWICK CT # 106	Palm Harbor	Condo Com Apartments	\$301,344	1,468	2004	\$4,674
5121 MANCHESTER CT # 108	Palm Harbor	Condo Com Apartments	\$301,344	1,468	2004	\$4,674
3763 EXETER CT # 103	Palm Harbor	Condo Com Apartments	\$301,344	1,468	2004	\$4,674
3775 EXETER CT # 103	Palm Harbor	Condo Com Apartments	\$301,344	1,468	2004	\$4,674
3763 EXETER CT # 108	Palm Harbor	Condo Com Apartments	\$301,344	1,468	2004	\$4,674
3751 EXETER CT # 106	Palm Harbor	Condo Com Apartments	\$301,344	1,468	2004	\$4,674
3993 HASTINGS CT # 106	Palm Harbor	Condo Com Apartments	\$301,344	1,468	2004	\$4,674
3939 HASTINGS CT # 106	Palm Harbor	Condo Com Apartments	\$301,344	1,468	2004	\$4,674
3828 ASHWICK CT # 103	Palm Harbor	Condo Com Apartments	\$301,344	1,468	2004	\$4,674
3843 EXETER CT # 103	Palm Harbor	Condo Com Apartments	\$301,344	1,468	2004	\$4,674
3850 ASHWICK CT # 103	Palm Harbor	Condo Com Apartments	\$301,344	1,468	2004	\$4,674
5071 MANCHESTER CT # 103	Palm Harbor	Condo Com Apartments	\$301,344	1,468	2004	\$4,674
5071 MANCHESTER CT # 106	Palm Harbor	Condo Com Apartments	\$301,344	1,468	2004	\$4,674
3962 HASTINGS CT # 103	Palm Harbor	Condo Com Apartments	\$301,344	1,468	2004	\$4,674
5071 MANCHESTER CT # 108	Palm Harbor	Condo Com Apartments	\$301,344	1,468	2004	\$4,674
3843 EXETER CT # 106	Palm Harbor	Condo Com Apartments	\$301,344	1,468	2004	\$4,674
3801 EXETER CT # 103	Palm Harbor	Condo Com Apartments	\$301,344	1,468	2004	\$4,674
724 N HIGHLAND AVE	Clearwater	Condo Com Apartments	\$295,960	1,640	1993	\$5,395
4930 CAMBRIDGE BLVD # 102	Palm Harbor	Condo Com Apartments	\$292,090	1,478	2002	\$4,706
3637 NEWCASTLE CT # 103	Palm Harbor	Condo Com Apartments	\$292,090	1,478	2002	\$4,706
4935 CAMBRIDGE BLVD # 104	Palm Harbor	Condo Com Apartments	\$292,090	1,478	2002	\$4,706

Address	City	Type	Market Value	Sq Ft	Year	Annual Tax
3637 NEWCASTLE CT # 102	Palm Harbor	Condo Com Apartments	\$292,090	1,478	2002	\$4,706
4971 CAMBRIDGE BLVD # 102	Palm Harbor	Condo Com Apartments	\$292,090	1,478	2002	\$4,706
4930 CAMBRIDGE BLVD # 103	Palm Harbor	Condo Com Apartments	\$292,090	1,478	2002	\$4,706
4953 CAMBRIDGE BLVD # 103	Palm Harbor	Condo Com Apartments	\$292,090	1,478	2002	\$4,706
4953 CAMBRIDGE BLVD # 102	Palm Harbor	Condo Com Apartments	\$292,090	1,478	2002	\$4,706
4935 CAMBRIDGE BLVD # 101	Palm Harbor	Condo Com Apartments	\$292,090	1,478	2002	\$4,706
4971 CAMBRIDGE BLVD # 103	Palm Harbor	Condo Com Apartments	\$292,090	1,478	2002	\$4,706
17105 GULF BLVD # 426	North Redington Beach	Condo Com Apartments	\$292,071	1,275	1971	\$5,231
17105 GULF BLVD # 201	North Redington Beach	Condo Com Apartments	\$292,071	1,275	1971	\$5,231
17105 GULF BLVD # 402	North Redington Beach	Condo Com Apartments	\$292,071	1,275	1971	\$5,231
17105 GULF BLVD # 202	North Redington Beach	Condo Com Apartments	\$292,071	1,275	1971	\$5,231
17105 GULF BLVD # 325	North Redington Beach	Condo Com Apartments	\$292,071	1,275	1971	\$5,231
17105 GULF BLVD # 301	North Redington Beach	Condo Com Apartments	\$292,071	1,275	1971	\$5,231
17117 GULF BLVD # 739	North Redington Beach	Condo Com Apartments	\$292,071	1,275	1975	\$5,231
17105 GULF BLVD # 225	North Redington Beach	Condo Com Apartments	\$292,071	1,275	1971	\$5,231
17105 GULF BLVD # 226	North Redington Beach	Condo Com Apartments	\$292,071	1,275	1971	\$5,231
17117 GULF BLVD # 339	North Redington Beach	Condo Com Apartments	\$292,071	1,275	1975	\$5,231
17117 GULF BLVD # 239	North Redington Beach	Condo Com Apartments	\$292,071	1,275	1975	\$5,231
17117 GULF BLVD # 539	North Redington Beach	Condo Com Apartments	\$292,071	1,275	1975	\$5,231
17117 GULF BLVD # 439	North Redington Beach	Condo Com Apartments	\$292,071	1,275	1975	\$5,231
17117 GULF BLVD # 639	North Redington Beach	Condo Com Apartments	\$292,071	1,275	1975	\$5,231
17105 GULF BLVD # 326	North Redington Beach	Condo Com Apartments	\$292,071	1,275	1971	\$5,231
17105 GULF BLVD # 425	North Redington Beach	Condo Com Apartments	\$292,071	1,275	1971	\$5,231
17105 GULF BLVD # 302	North Redington Beach	Condo Com Apartments	\$292,071	1,275	1971	\$5,231
718 N HIGHLAND AVE	Clearwater	Condo Com Apartments	\$288,056	1,640	1993	\$5,395

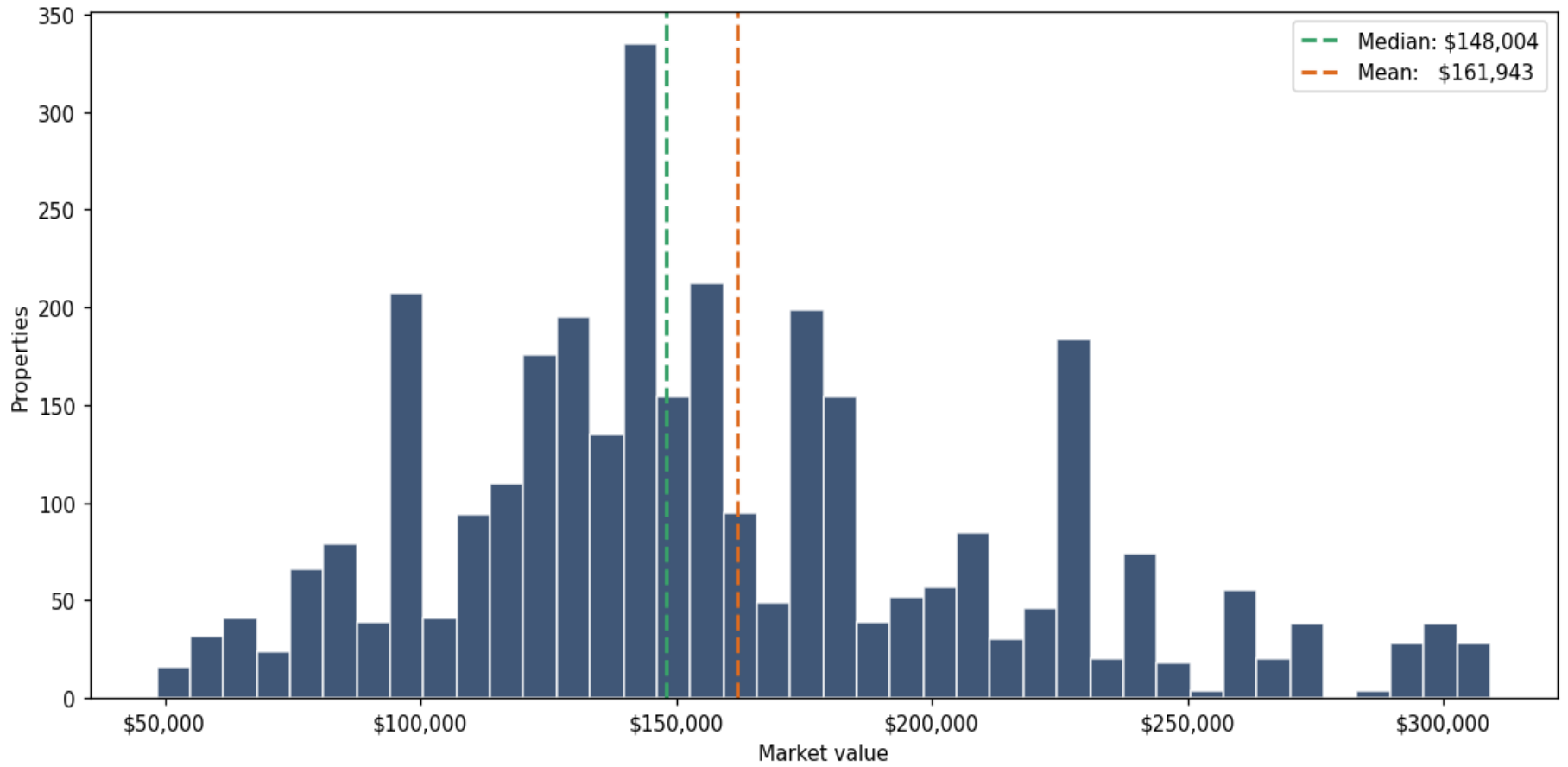
Address	City	Type	Market Value	Sq Ft	Year	Annual Tax
4841 INVERNESS CT # 104	Palm Harbor	Condo Com Apartments	\$287,844	1,360	1998	\$4,330
4823 INVERNESS CT # 104	Palm Harbor	Condo Com Apartments	\$287,844	1,360	1998	\$4,330
4859 INVERNESS CT # 104	Palm Harbor	Condo Com Apartments	\$287,844	1,360	1998	\$4,330
4979 BARCLAY DR # 205	Palm Harbor	Condo Com Apartments	\$271,735	1,375	2002	\$4,378
3546 HAMPSHIRE CT # 203	Palm Harbor	Condo Com Apartments	\$271,735	1,375	2002	\$4,378
4933 BARCLAY DR # 205	Palm Harbor	Condo Com Apartments	\$271,735	1,375	2002	\$4,378
4998 CAMBRIDGE BLVD # 203	Palm Harbor	Condo Com Apartments	\$271,735	1,375	2002	\$4,378
4933 BARCLAY DR # 202	Palm Harbor	Condo Com Apartments	\$271,735	1,375	2002	\$4,378
4911 CAMBRIDGE BLVD # 203	Palm Harbor	Condo Com Apartments	\$271,735	1,375	2002	\$4,378
3539 HAMPSHIRE CT # 203	Palm Harbor	Condo Com Apartments	\$271,735	1,375	2002	\$4,378
3610 NEWCASTLE CT # 202	Palm Harbor	Condo Com Apartments	\$271,735	1,375	2002	\$4,378
3535 HAMPSHIRE CT # 205	Palm Harbor	Condo Com Apartments	\$271,735	1,375	2002	\$4,378
4911 CAMBRIDGE BLVD # 202	Palm Harbor	Condo Com Apartments	\$271,735	1,375	2002	\$4,378
3524 HAMPSHIRE CT # 203	Palm Harbor	Condo Com Apartments	\$271,735	1,375	2002	\$4,378
4966 CAMBRIDGE BLVD # 205	Palm Harbor	Condo Com Apartments	\$271,735	1,375	2002	\$4,378
3502 HAMPSHIRE CT # 202	Palm Harbor	Condo Com Apartments	\$271,735	1,375	2002	\$4,378
3502 HAMPSHIRE CT # 203	Palm Harbor	Condo Com Apartments	\$271,735	1,375	2002	\$4,378
4966 CAMBRIDGE BLVD # 202	Palm Harbor	Condo Com Apartments	\$271,735	1,375	2002	\$4,378
4911 CAMBRIDGE BLVD # 201	Palm Harbor	Condo Com Apartments	\$271,735	1,375	2002	\$4,378
4979 BARCLAY DR # 202	Palm Harbor	Condo Com Apartments	\$271,735	1,375	2002	\$4,378
4911 CAMBRIDGE BLVD # 204	Palm Harbor	Condo Com Apartments	\$271,735	1,375	2002	\$4,378
3653 NEWCASTLE CT # 202	Palm Harbor	Condo Com Apartments	\$271,735	1,375	2002	\$4,378
4954 BARCLAY DR # 201	Palm Harbor	Condo Com Apartments	\$271,735	1,375	2002	\$4,378
4974 CAMBRIDGE BLVD # 204	Palm Harbor	Condo Com Apartments	\$271,735	1,375	2002	\$4,378
4954 BARCLAY DR # 204	Palm Harbor	Condo Com Apartments	\$271,735	1,375	2002	\$4,378

Address	City	Type	Market Value	Sq Ft	Year	Annual Tax
4990 CAMBRIDGE BLVD # 205	Palm Harbor	Condo Com Apartments	\$271,735	1,375	2002	\$4,378
3523 HAMPSHIRE CT # 205	Palm Harbor	Condo Com Apartments	\$271,735	1,375	2002	\$4,378
3524 HAMPSHIRE CT # 202	Palm Harbor	Condo Com Apartments	\$271,735	1,375	2002	\$4,378
4955 BARCLAY DR # 203	Palm Harbor	Condo Com Apartments	\$271,735	1,375	2002	\$4,378
3610 NEWCASTLE CT # 203	Palm Harbor	Condo Com Apartments	\$271,735	1,375	2002	\$4,378
4922 CAMBRIDGE BLVD # 202	Palm Harbor	Condo Com Apartments	\$271,735	1,375	2002	\$4,378
4974 CAMBRIDGE BLVD # 201	Palm Harbor	Condo Com Apartments	\$271,735	1,375	2002	\$4,378
4998 CAMBRIDGE BLVD # 202	Palm Harbor	Condo Com Apartments	\$271,735	1,375	2002	\$4,378
4990 CAMBRIDGE BLVD # 202	Palm Harbor	Condo Com Apartments	\$271,735	1,375	2002	\$4,378
3523 HAMPSHIRE CT # 202	Palm Harbor	Condo Com Apartments	\$271,735	1,375	2002	\$4,378
3546 HAMPSHIRE CT # 202	Palm Harbor	Condo Com Apartments	\$271,735	1,375	2002	\$4,378
4955 BARCLAY DR # 202	Palm Harbor	Condo Com Apartments	\$271,735	1,375	2002	\$4,378
4922 CAMBRIDGE BLVD # 205	Palm Harbor	Condo Com Apartments	\$271,735	1,375	2002	\$4,378
3539 HAMPSHIRE CT # 202	Palm Harbor	Condo Com Apartments	\$271,735	1,375	2002	\$4,378
3653 NEWCASTLE CT # 205	Palm Harbor	Condo Com Apartments	\$271,735	1,375	2002	\$4,378
3535 HAMPSHIRE CT # 202	Palm Harbor	Condo Com Apartments	\$271,735	1,375	2002	\$4,378
17105 GULF BLVD # 126	North Redington Beach	Condo Com Apartments	\$268,769	1,275	1971	\$5,231
17105 GULF BLVD # 102	North Redington Beach	Condo Com Apartments	\$268,769	1,275	1971	\$5,231
17105 GULF BLVD # 101	North Redington Beach	Condo Com Apartments	\$268,769	1,275	1971	\$5,231
17117 GULF BLVD # 139	North Redington Beach	Condo Com Apartments	\$268,769	1,275	1975	\$5,231
17105 GULF BLVD # 125	North Redington Beach	Condo Com Apartments	\$268,769	1,275	1971	\$5,231
4934 LAMBRIDGE CT # 104	Palm Harbor	Condo Com Apartments	\$267,949	1,266	1998	\$4,031
3790 THORNBURY CT # 101	Palm Harbor	Condo Com Apartments	\$267,949	1,266	1998	\$4,031
4991 LAMBRIDGE CT # 101	Palm Harbor	Condo Com Apartments	\$267,949	1,266	1998	\$4,031
4810 INVERNESS CT # 104	Palm Harbor	Condo Com Apartments	\$267,949	1,266	1998	\$4,031

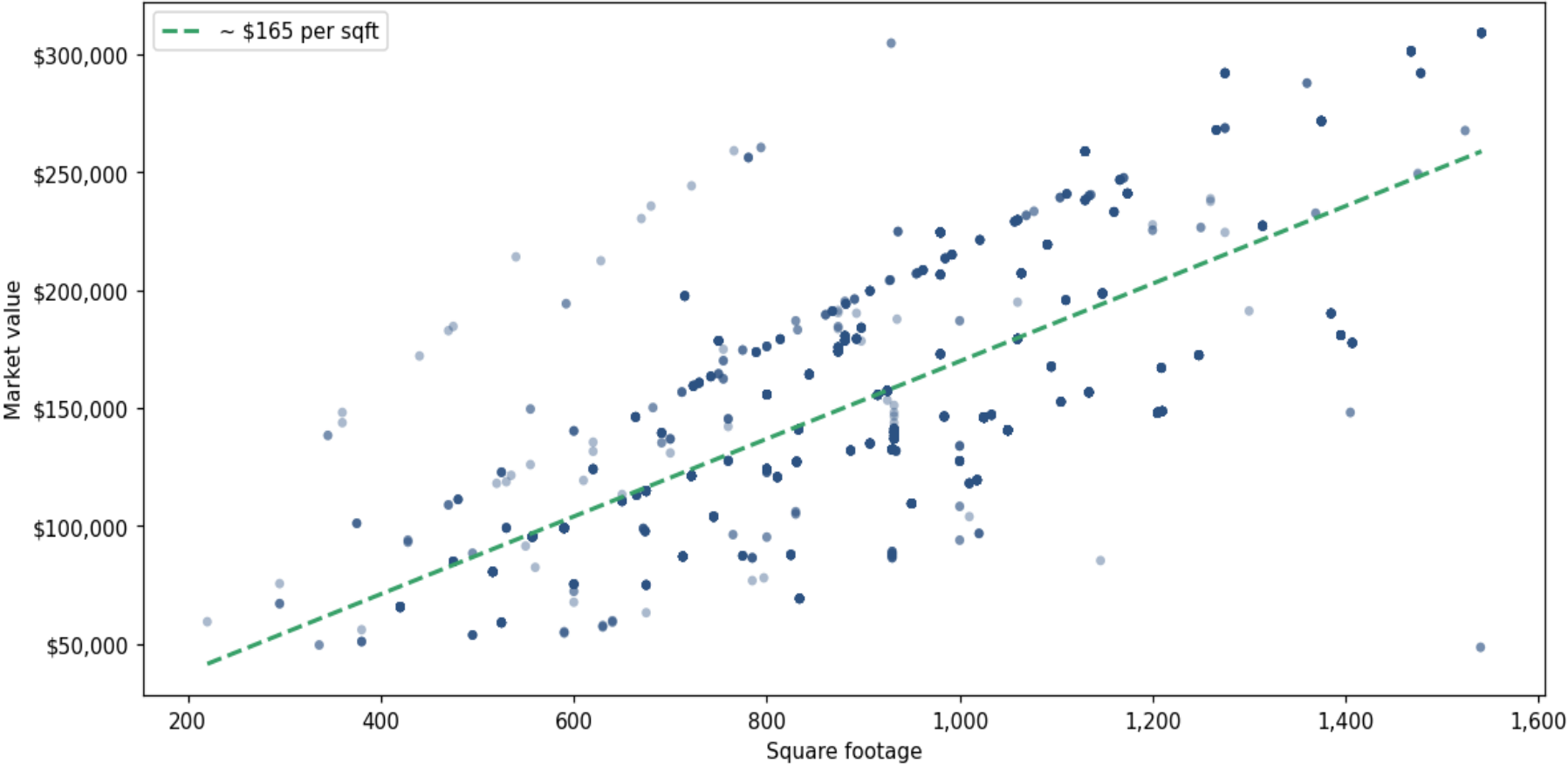
Address	City	Type	Market Value	Sq Ft	Year	Annual Tax
4996 LAMBRIDGE CT # 101	Palm Harbor	Condo Com Apartments	\$267,949	1,266	1998	\$4,031
4967 LAMBRIDGE CT # 101	Palm Harbor	Condo Com Apartments	\$267,949	1,266	1998	\$4,031
4955 LAMBRIDGE CT # 101	Palm Harbor	Condo Com Apartments	\$267,949	1,266	1998	\$4,031
3791 THORNBURY CT # 101	Palm Harbor	Condo Com Apartments	\$267,949	1,266	1998	\$4,031
4946 LAMBRIDGE CT # 104	Palm Harbor	Condo Com Apartments	\$267,949	1,266	1998	\$4,031
3790 THORNBURY CT # 104	Palm Harbor	Condo Com Apartments	\$267,949	1,266	1998	\$4,031
3775 THORNBURY CT # 104	Palm Harbor	Condo Com Apartments	\$267,949	1,266	1998	\$4,031
4964 LAMBRIDGE CT # 101	Palm Harbor	Condo Com Apartments	\$267,949	1,266	1998	\$4,031
4979 LAMBRIDGE CT # 101	Palm Harbor	Condo Com Apartments	\$267,949	1,266	1998	\$4,031
726 N HIGHLAND AVE	Clearwater	Condo Com Apartments	\$267,681	1,524	1993	\$5,014
716 N HIGHLAND AVE	Clearwater	Condo Com Apartments	\$267,681	1,524	1993	\$5,014
223 DOLPHIN PT # 7	Clearwater	Condo Com Apartments	\$260,512	794	1970	\$6,204
223 DOLPHIN PT # 2	Clearwater	Condo Com Apartments	\$260,512	794	1970	\$6,204
709 GULF WAY # 5	St. Pete Beach	Condo Com Apartments	\$259,138	766	1950	\$5,153
17105 GULF BLVD # 411	North Redington Beach	Condo Com Apartments	\$258,854	1,130	1971	\$4,636
17117 GULF BLVD # 447	North Redington Beach	Condo Com Apartments	\$258,854	1,130	1975	\$4,636
17105 GULF BLVD # 213	North Redington Beach	Condo Com Apartments	\$258,854	1,130	1971	\$4,636
17117 GULF BLVD # 646	North Redington Beach	Condo Com Apartments	\$258,854	1,130	1975	\$4,636
17105 GULF BLVD # 314	North Redington Beach	Condo Com Apartments	\$258,854	1,130	1971	\$4,636
17105 GULF BLVD # 415	North Redington Beach	Condo Com Apartments	\$258,854	1,130	1971	\$4,636
17117 GULF BLVD # 249	North Redington Beach	Condo Com Apartments	\$258,854	1,130	1975	\$4,636
17117 GULF BLVD # 645	North Redington Beach	Condo Com Apartments	\$258,854	1,130	1975	\$4,636
17117 GULF BLVD # 649	North Redington Beach	Condo Com Apartments	\$258,854	1,130	1975	\$4,636
17117 GULF BLVD # 746	North Redington Beach	Condo Com Apartments	\$258,854	1,130	1975	\$4,636
17117 GULF BLVD # 548	North Redington Beach	Condo Com Apartments	\$258,854	1,130	1975	\$4,636

Address	City	Type	Market Value	Sq Ft	Year	Annual Tax
17105 GULF BLVD # 210	North Redington Beach	Condo Com Apartments	\$258,854	1,130	1971	\$4,636
17117 GULF BLVD # 747	North Redington Beach	Condo Com Apartments	\$258,854	1,130	1975	\$4,636
17105 GULF BLVD # 312	North Redington Beach	Condo Com Apartments	\$258,854	1,130	1971	\$4,636
17117 GULF BLVD # 445	North Redington Beach	Condo Com Apartments	\$258,854	1,130	1975	\$4,636
17105 GULF BLVD # 316	North Redington Beach	Condo Com Apartments	\$258,854	1,130	1971	\$4,636
17105 GULF BLVD # 214	North Redington Beach	Condo Com Apartments	\$258,854	1,130	1971	\$4,636
17105 GULF BLVD # 217	North Redington Beach	Condo Com Apartments	\$258,854	1,130	1971	\$4,636
17117 GULF BLVD # 346	North Redington Beach	Condo Com Apartments	\$258,854	1,130	1975	\$4,636
17117 GULF BLVD # 247	North Redington Beach	Condo Com Apartments	\$258,854	1,130	1975	\$4,636
17117 GULF BLVD # 749	North Redington Beach	Condo Com Apartments	\$258,854	1,130	1975	\$4,636
17117 GULF BLVD # 246	North Redington Beach	Condo Com Apartments	\$258,854	1,130	1975	\$4,636
17105 GULF BLVD # 310	North Redington Beach	Condo Com Apartments	\$258,854	1,130	1971	\$4,636

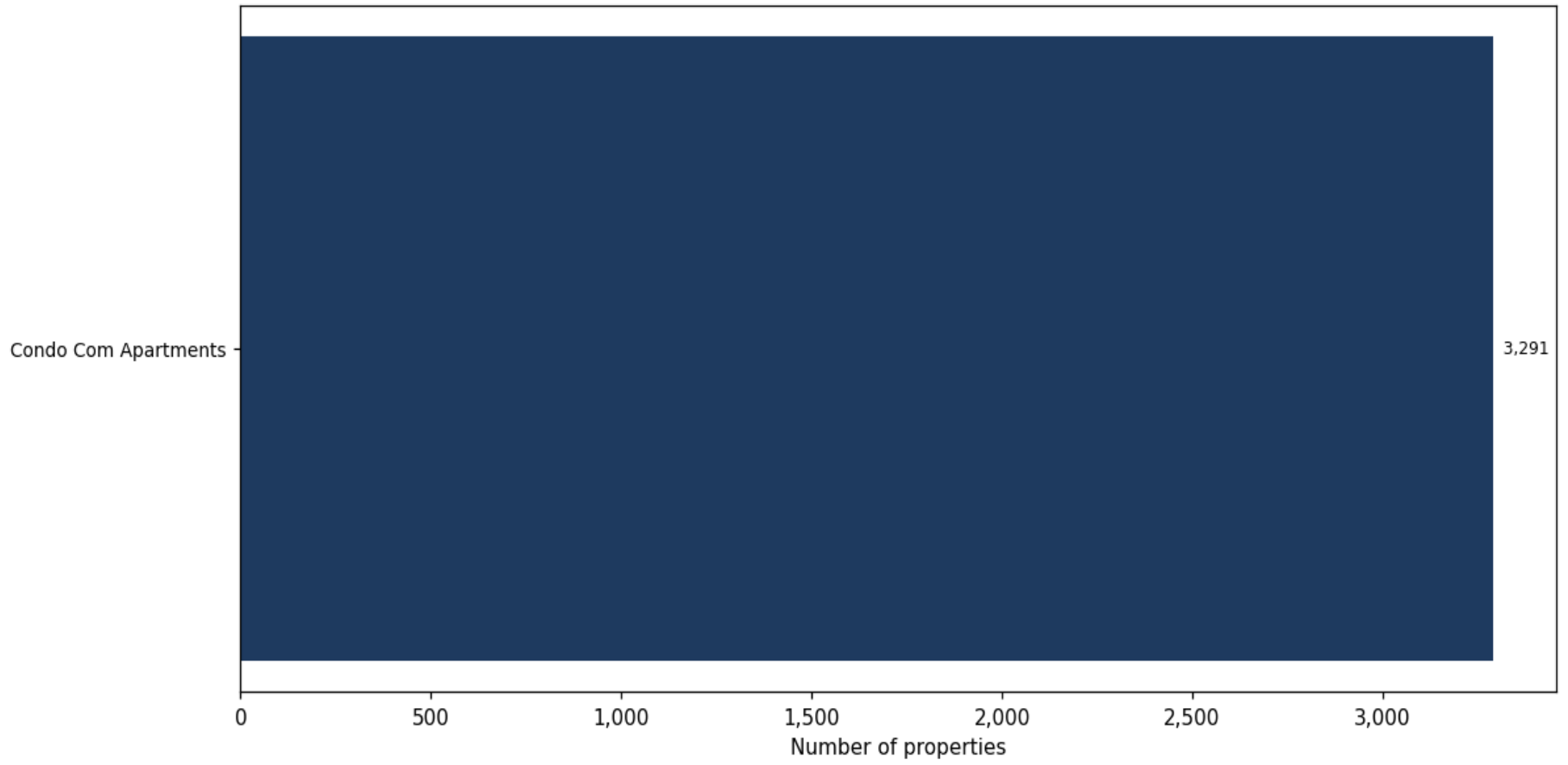
Market value distribution (n=3,291, top 1% trimmed for readability)



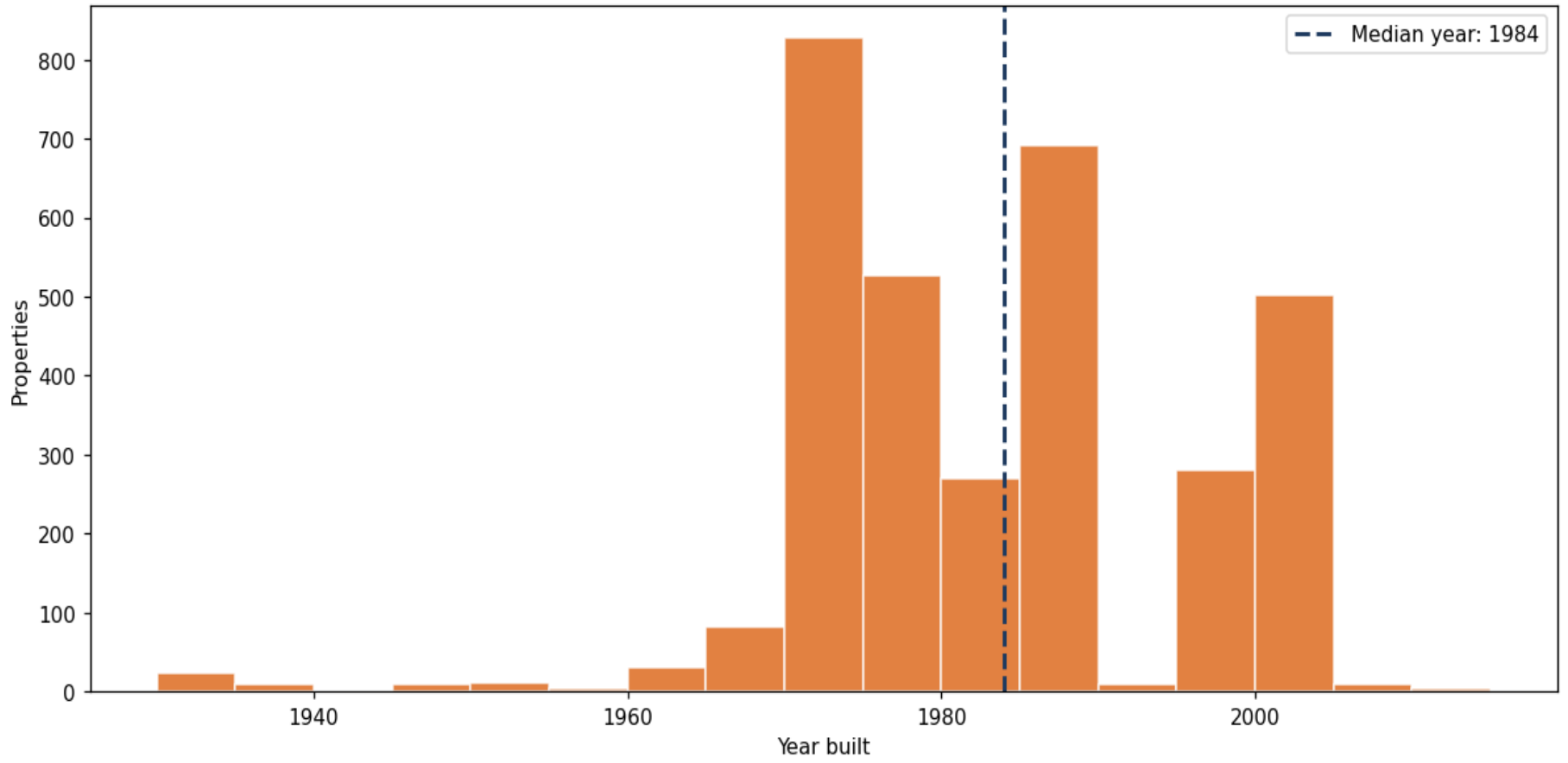
Building size vs. market value (n=3,254, outliers trimmed)



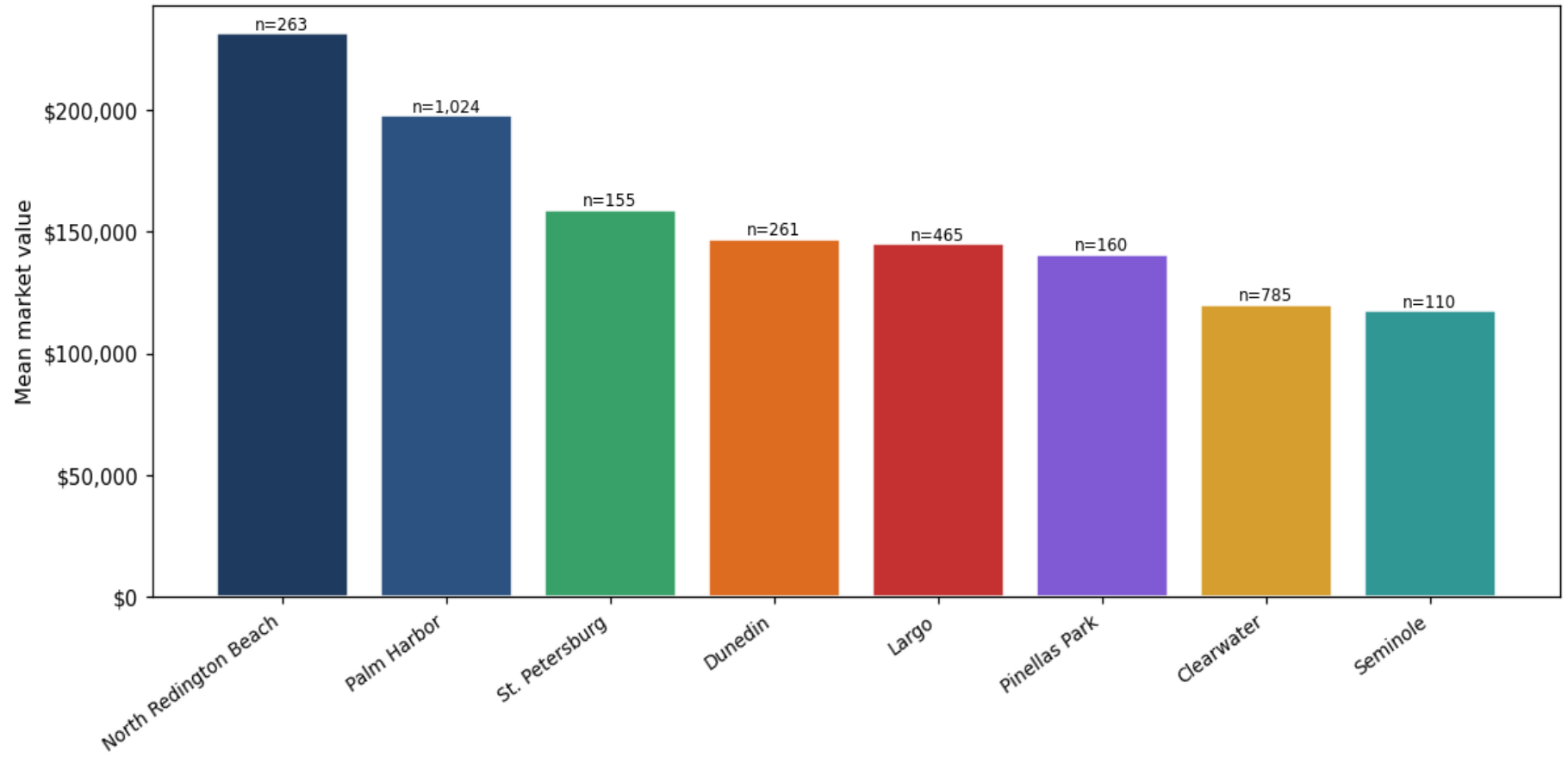
Top property types by count



Year built distribution (5-year buckets)



Mean market value by city (cities with ≥ 50 matches)



Market value vs. assessed value (gap = untaxed appreciation)

