

# Pinellas Property Market Report

353 matching properties • May 30, 2026

Filters applied	Headline numbers
<b>Property type:</b> City Gov't - Non-residential (commercial) only	<b>Properties matched:</b> 353
	<b>Median market value:</b> \$2,680,039
	<b>Mean market value:</b> \$6,164,443
	<b>Min / Max:</b> \$85 / \$111,572,387
	<b>Mean square footage:</b> 21,582

## Top 200 properties by market value

Address	City	Type	Market Value	Sq Ft	Year	Annual Tax
7690 59TH ST N	Pinellas Park	City Gov't - Non-residen	—	27,200	1955	—
200 16TH ST S	St. Petersburg	City Gov't - Non-residen	\$111,572,387	1,100,000	1990	\$4,197,128
901 NORTH SHORE DR NE	St. Petersburg	City Gov't - Non-residen	\$99,871,681	11,011	2007	\$2,048,413
1301 1ST AVE N	St. Petersburg	City Gov't - Non-residen	\$98,900,449	287,275	2019	\$1,955,833
100 N OSCEOLA AVE	Clearwater	City Gov't - Non-residen	\$80,055,877	104,490	2004	\$1,675,257
400 1ST ST S	St. Petersburg	City Gov't - Non-residen	\$75,245,254	231,140	1964	\$1,308,579
341 8TH AVE SE	St. Petersburg	City Gov't - Non-residen	\$73,589,518	162,856	1938	\$1,493,978
230 1ST ST S	St. Petersburg	City Gov't - Non-residen	\$52,516,124	7,227	1977	\$1,246,452
1690 SOLON AVE	Dunedin	City Gov't - Non-residen	\$47,925,582	158,527	2021	\$811,347
335 2ND AVE NE	St. Petersburg	City Gov't - Non-residen	\$40,065,000	18,054	1957	\$806,150
1101 COUNTRY CLUB WAY S	St. Petersburg	City Gov't - Non-residen	\$31,059,641	1,600	1981	\$635,148
300 2ND AVE NE	St. Petersburg	City Gov't - Non-residen	\$30,370,000	15,823	1965	\$612,531
100 CENTRAL AVE	St. Petersburg	City Gov't - Non-residen	\$29,439,243		1990	\$537,366

Address	City	Type	Market Value	Sq Ft	Year	Annual Tax
120 CENTRAL PARK DR	Largo	City Gov't - Non-residen	\$28,293,093	83,073	2005	\$540,256
1920 PINEHURST RD	Dunedin	City Gov't - Non-residen	\$28,023,501	114,710	2006	\$501,316
601 N OLD COACHMAN RD	Clearwater	City Gov't - Non-residen	\$26,167,708	49,239	2004	\$515,721
1111 N MCMULLEN BOOTH RD	Clearwater	City Gov't - Non-residen	\$26,019,772	127,791	1983	\$503,781
1 4TH ST N	St. Petersburg	City Gov't - Non-residen	\$25,635,301	139,793	1925	\$463,571
330 2ND AVE N	St. Petersburg	City Gov't - Non-residen	\$23,270,508	1,390	1950	\$475,825
300 MUNICIPAL DR	Madeira Beach	City Gov't - Non-residen	\$23,222,494	29,644	2015	\$387,860
15102 GULF BLVD	Madeira Beach	City Gov't - Non-residen	\$18,649,776	4,224	1945	\$310,729
BAY SHORE DR SE	St. Petersburg	City Gov't - Non-residen	\$17,753,947		1988	\$354,615
MANDALAY AVE	Clearwater	City Gov't - Non-residen	\$17,535,509	10,064	2023	\$348,496
440 2ND AVE N	St. Petersburg	City Gov't - Non-residen	\$16,466,126	62,134	1929	\$322,899
7901 30TH AVE N	St. Petersburg	City Gov't - Non-residen	\$16,131,018	49,445	1967	\$327,556
201 HIGHLAND AVE N	Largo	City Gov't - Non-residen	\$16,020,950	111,997	1973	\$317,941
69 BAY ESPLANADE	Clearwater	City Gov't - Non-residen	\$15,517,660	10,899	1951	\$318,918
165 75TH AVE	St. Pete Beach	City Gov't - Non-residen	\$15,439,011	28,575		\$247,087
2851 N MCMULLEN BOOTH RD	Clearwater	City Gov't - Non-residen	\$14,561,206	39,118	2022	\$285,924
180 S GUFVIEW AVE	Clearwater	City Gov't - Non-residen	\$14,412,579	2,960	2011	\$285,578
400 S DR MARTIN LUTHER KING JR A	St. Petersburg	City Gov't - Non-residen	\$14,225,243	37,927	1988	\$290,565
302 SEMINOLE ST	Clearwater	City Gov't - Non-residen	\$14,223,942	14,080	1972	\$282,015
1500 PASS A GRILLE WAY	St. Pete Beach	City Gov't - Non-residen	\$14,001,061	3,165	1955	\$228,876
250 8TH AVE SE	St. Petersburg	City Gov't - Non-residen	\$13,972,103	43,584	1928	\$275,671
11260 GULF BEACH BLVD	Treasure Island	City Gov't - Non-residen	\$12,730,510	2,934	1953	\$215,430
100 S MYRTLE AVE	Clearwater	City Gov't - Non-residen	\$12,696,634	78,117	1996	\$284,865
19305 GULF BLVD	Indian Shores	City Gov't - Non-residen	\$12,694,115	35,702	2011	\$191,854
2640 SABAL SPRINGS DR	Clearwater	City Gov't - Non-residen	\$12,621,597	48,126	1996	\$249,235

Address	City	Type	Market Value	Sq Ft	Year	Annual Tax
1951 4TH ST N	St. Petersburg	City Gov't - Non-residen	\$12,150,000	56,061	1952	\$245,012
6635 DR MARTIN LUTHER KING JR ST	St. Petersburg	City Gov't - Non-residen	\$11,427,366	26,074	1968	\$231,284
1701 BURLINGTON AVE N	St. Petersburg	City Gov't - Non-residen	\$11,403,985	66,019	1956	\$228,232
373 DOUGLAS AVE	Dunedin	City Gov't - Non-residen	\$11,350,000	45,190	1977	\$202,420
10901 28TH ST N	St. Petersburg	City Gov't - Non-residen	\$11,203,616	7,840	2003	\$227,693
4230 SHORE ACRES BLVD NE	St. Petersburg	City Gov't - Non-residen	\$10,830,920	21,042	2022	\$201,500
645 PIERCE ST	Clearwater	City Gov't - Non-residen	\$10,823,235	67,500	1996	\$200,257
1477 PASADENA AVE	South Pasadena	City Gov't - Non-residen	\$10,676,240	12,516	2024	\$175,279
323 CENTRAL PARK DR	Largo	City Gov't - Non-residen	\$10,269,267	38,807	1995	\$195,135
737 LOUDEN AVE	Dunedin	City Gov't - Non-residen	\$10,124,239	37,970	2023	\$169,515
337 CENTRAL AVE	St. Petersburg	City Gov't - Non-residen	\$10,067,390	8,358	1972	\$168,127
5801 22ND AVE N	St. Petersburg	City Gov't - Non-residen	\$9,734,693	27,115	1962	\$194,932
9100 113TH ST	Seminole	City Gov't - Non-residen	\$9,490,837	56,655	1983	\$139,804
777 MAPLE ST # A	Clearwater	City Gov't - Non-residen	\$9,422,631	53,396	2019	\$183,132
536 4TH AVE N	St. Petersburg	City Gov't - Non-residen	\$9,025,555	20,987	1920	\$201,710
1005 N OLD COACHMAN RD	Clearwater	City Gov't - Non-residen	\$8,585,102	25,136	2020	\$154,722
536 4TH AVE N	St. Petersburg	City Gov't - Non-residen	\$8,446,283	25,078	1920	\$176,525
10451 GULF BLVD	Treasure Island	City Gov't - Non-residen	\$8,387,462	28,347	1982	\$129,238
6301 94TH AVE	Pinellas Park	City Gov't - Non-residen	\$8,249,252	18,496	1983	\$176,474
400 HIGHLAND AVE N	Largo	City Gov't - Non-residen	\$8,025,930	43,313	2013	\$153,322
1401 62ND AVE S	St. Petersburg	City Gov't - Non-residen	\$7,729,655	25,682	1968	\$154,520
28 N GARDEN AVE	Clearwater	City Gov't - Non-residen	\$7,687,657	114,616	1986	\$134,344
101 2ND ST N	Safety Harbor	City Gov't - Non-residen	\$7,601,228	30,801	1993	\$147,541
223 DOUGLAS AVE	Dunedin	City Gov't - Non-residen	\$7,380,051	37,667	1996	\$130,080
2000 7TH ST S	St. Petersburg	City Gov't - Non-residen	\$7,140,346	21,108	1982	\$146,979

Address	City	Type	Market Value	Sq Ft	Year	Annual Tax
4050 80TH AVE N	Pinellas Park	City Gov't - Non-residen	\$7,022,659	13,513	2022	\$134,625
3200 DR MARTIN LUTHER KING JR ST	St. Petersburg	City Gov't - Non-residen	\$7,017,994			\$148,489
1140 COURT ST	Clearwater	City Gov't - Non-residen	\$7,004,248	25,980	2014	\$125,949
1000 N HERCULES AVE	Clearwater	City Gov't - Non-residen	\$6,886,858	56,116	1971	\$120,641
2601 20TH AVE N	St. Petersburg	City Gov't - Non-residen	\$6,866,569	29,541	1975	\$138,729
6850 BEACH PLZ	St. Pete Beach	City Gov't - Non-residen	\$6,801,330	1,051	1980	\$109,021
1700 N BELCHER RD	Clearwater	City Gov't - Non-residen	\$6,668,729	30,250	1978	\$130,150
1246 50TH AVE N	St. Petersburg	City Gov't - Non-residen	\$6,622,175	26,225	2008	\$120,745
1000 2ND ST SE	Largo	City Gov't - Non-residen	\$6,589,214	43,368	1950	\$125,224
940 7TH ST S	Safety Harbor	City Gov't - Non-residen	\$6,584,970	1,134	1983	\$117,627
410 N RING AVE	Tarpon Springs	City Gov't - Non-residen	\$6,468,528	54,670	1925	\$113,859
2681 COUNTRYSIDE BLVD	Clearwater	City Gov't - Non-residen	\$6,410,117	25,153	2017	\$115,959
13TH AVE N	St. Petersburg	City Gov't - Non-residen	\$6,374,697	11,043	1954	\$128,371
300 COMMERCE BLVD	Oldsmar	City Gov't - Non-residen	\$6,365,340	37,399	1998	\$105,052
101 9TH AVE	St. Pete Beach	City Gov't - Non-residen	\$6,337,132			\$103,716
5141 78TH AVE N	Pinellas Park	City Gov't - Non-residen	\$6,303,145	26,650	1975	\$139,307
1000 3RD ST S	St. Petersburg	City Gov't - Non-residen	\$6,286,839	29,292	1948	\$127,368
730 6TH ST S	St. Petersburg	City Gov't - Non-residen	\$6,211,590	122,502	1985	\$128,859
1440 S MARTIN LUTHER KING JR AVE	Clearwater	City Gov't - Non-residen	\$6,135,197	24,599	1961	\$118,775
1080 VIRGINIA ST	Dunedin	City Gov't - Non-residen	\$6,066,497	38,517	1959	\$108,082
3745 9TH AVE N	St. Petersburg	City Gov't - Non-residen	\$6,003,760	36,896	1963	\$169,048
601 14TH ST S	St. Petersburg	City Gov't - Non-residen	\$5,972,713	24,688	1996	\$119,115
444 S HUEY AVE	Tarpon Springs	City Gov't - Non-residen	\$5,926,787	28,900	2001	\$106,587
701 19TH ST N	St. Petersburg	City Gov't - Non-residen	\$5,908,805	97,178	1980	\$118,639
3120 TAMPA RD	Oldsmar	City Gov't - Non-residen	\$5,872,057	4,668	1997	\$106,158

Address	City	Type	Market Value	Sq Ft	Year	Annual Tax
1344 22ND ST S	St. Petersburg	City Gov't - Non-residen	\$5,869,405	28,573	2004	\$121,362
1450 16TH ST N	St. Petersburg	City Gov't - Non-residen	\$5,767,529	29,580	1960	\$115,163
13120 VONN RD	Largo	City Gov't - Non-residen	\$5,682,389	31,176	1985	\$118,084
7 CAUSEWAY BLVD	Clearwater	City Gov't - Non-residen	\$5,612,288	2,430	1996	\$110,131
1059 18TH AVE S	St. Petersburg	City Gov't - Non-residen	\$5,611,052	62,913	2002	\$129,890
1900 GRAND AVE	Clearwater	City Gov't - Non-residen	\$5,564,256	101,250	1981	\$103,703
201 S GLENWOOD AVE	Clearwater	City Gov't - Non-residen	\$5,561,885	252	1950	\$111,053
2400 HARN BLVD	Clearwater	City Gov't - Non-residen	\$5,561,275	16,804	2018	\$111,423
2650 10TH AVE S	St. Petersburg	City Gov't - Non-residen	\$5,506,422	30,773	2001	\$104,147
5730 SHORE BLVD S	Gulfport	City Gov't - Non-residen	\$5,405,884	24,322	1969	\$95,309
5701 LEE ST NE	St. Petersburg	City Gov't - Non-residen	\$5,397,519	1,600	1985	\$111,506
180 108TH AVE	Treasure Island	City Gov't - Non-residen	\$5,351,133	14,209	1957	\$89,826
7770 52ND ST N	Pinellas Park	City Gov't - Non-residen	\$5,344,262	30,226	1968	\$112,272
280 5TH ST N	St. Petersburg	City Gov't - Non-residen	\$5,264,531	19,961	1910	\$110,545
444 CAUSEWAY BLVD	Belleair Beach	City Gov't - Non-residen	\$5,208,957	12,529	1989	\$82,159
400 ALT KEENE RD	Largo	City Gov't - Non-residen	\$5,115,314	30,159	2010	\$104,881
120 108TH AVE	Treasure Island	City Gov't - Non-residen	\$4,911,779	10,497	1954	\$81,527
11195 70TH AVE N	Seminole	City Gov't - Non-residen	\$4,881,749	24,005	2010	\$78,152
31ST ST S	St. Petersburg	City Gov't - Non-residen	\$4,867,533	8,160	1888	\$101,184
1200 RAILROAD AVE	Safety Harbor	City Gov't - Non-residen	\$4,849,369	26,748	1989	\$79,057
155 COREY AVE	St. Pete Beach	City Gov't - Non-residen	\$4,847,452	19,279	2002	\$79,381
3200 32ND ST S	St. Petersburg	City Gov't - Non-residen	\$4,826,490	23,264	1996	\$97,288
1701 N HERCULES AVE	Clearwater	City Gov't - Non-residen	\$4,743,330	22,125	1994	\$93,377
5000 150TH AVE N	Largo	City Gov't - Non-residen	\$4,665,691	24,500	2016	\$90,258
6051 78TH AVE N	Pinellas Park	City Gov't - Non-residen	\$4,630,219	30,276	1985	\$91,283

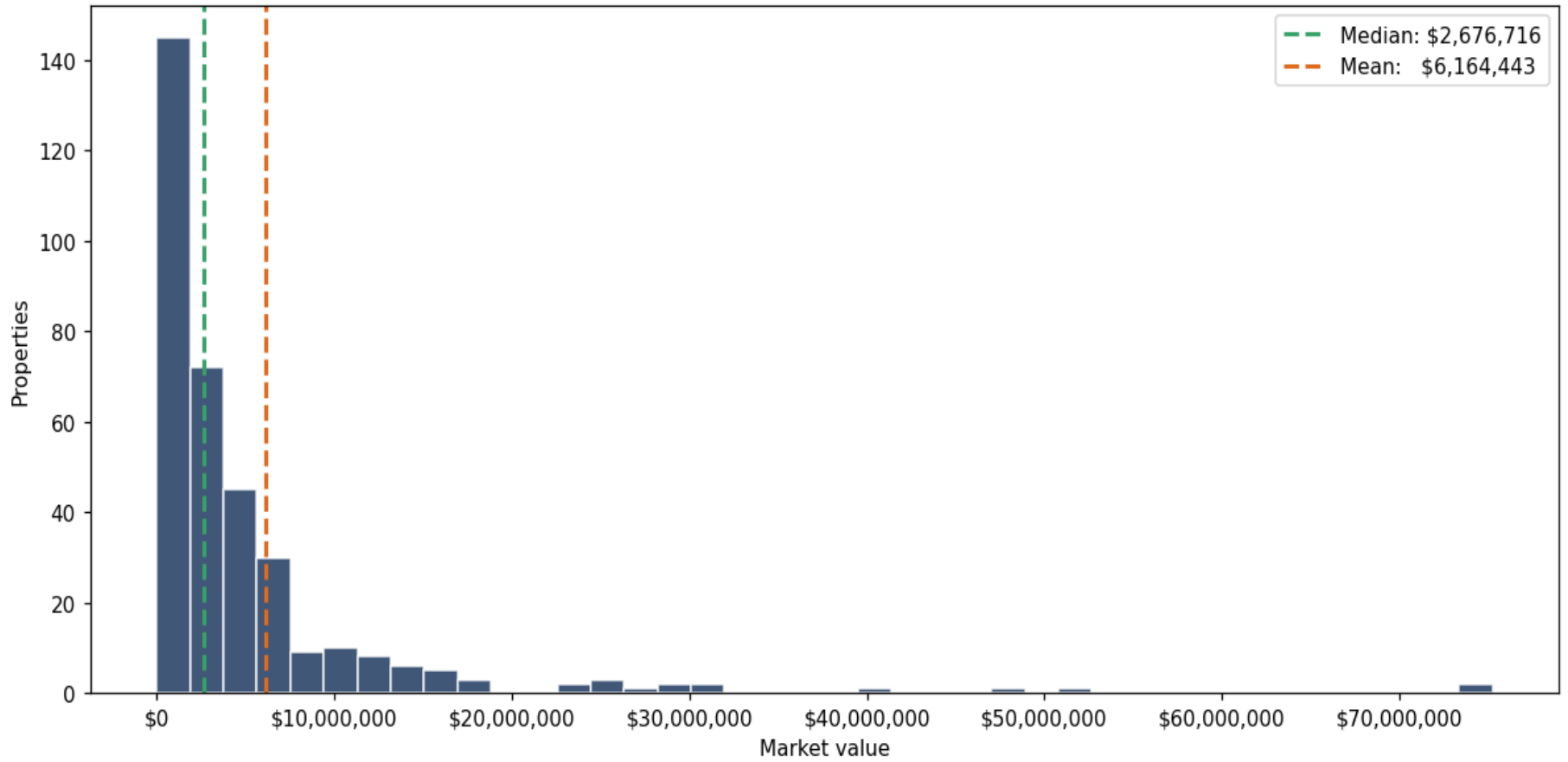
Address	City	Type	Market Value	Sq Ft	Year	Annual Tax
7500 26TH AVE N	St. Petersburg	City Gov't - Non-residen	\$4,586,807	4,235	1980	\$92,498
1000 N HERCULES AVE	Clearwater	City Gov't - Non-residen	\$4,546,096	9,600	2004	\$88,529
1 PARK PL	Treasure Island	City Gov't - Non-residen	\$4,539,998	8,180	1982	\$76,756
1000 EDENVILLE AVE	Clearwater	City Gov't - Non-residen	\$4,502,097	1,667	1976	\$88,950
423 LAFAYETTE BLVD	Oldsmar	City Gov't - Non-residen	\$4,498,020	9,470		\$80,052
900 N MARTIN LUTHER KING JR AVE	Clearwater	City Gov't - Non-residen	\$4,495,041	32,317	2002	\$81,389
250 W LAKE RD	Palm Harbor	City Gov't - Non-residen	\$4,449,305	15,026	2007	\$73,494
5851 PARK BLVD	Pinellas Park	City Gov't - Non-residen	\$4,439,131	16,338	2004	\$97,448
714 N SATURN AVE	Clearwater	City Gov't - Non-residen	\$4,411,584	16,332	1971	\$85,541
901 PONCE DE LEON BLVD	Belleair	City Gov't - Non-residen	\$4,381,512	29,652	1964	\$82,780
1511 BAY PALM BLVD	Indian Rocks Beach	City Gov't - Non-residen	\$4,355,930	12,342	1951	\$70,278
138 E LEMON ST	Tarpon Springs	City Gov't - Non-residen	\$4,344,165	20,000	1996	\$82,762
9199 113TH ST	Seminole	City Gov't - Non-residen	\$4,212,742	17,648	1995	\$62,746
1650 N ARCTURAS AVE # D	Clearwater	City Gov't - Non-residen	\$4,167,787	54,633	1963	\$77,449
535 4TH AVE N	St. Petersburg	City Gov't - Non-residen	\$4,158,372	29,172	1924	\$85,616
1320 5TH ST N	St. Petersburg	City Gov't - Non-residen	\$4,124,505	7,583	1945	\$83,653
1845 13TH AVE N	St. Petersburg	City Gov't - Non-residen	\$4,116,672	16,633	1985	\$83,511
500 PINELLAS POINT DR	St. Petersburg	City Gov't - Non-residen	\$4,059,818	4,216	1966	\$82,120
11901 146TH ST	Largo	City Gov't - Non-residen	\$3,930,914	4,420	1989	\$75,717
3300 GULF BLVD	St. Pete Beach	City Gov't - Non-residen	\$3,928,346	6,910	1928	\$63,242
601 45TH ST S	St. Petersburg	City Gov't - Non-residen	\$3,913,981	15,923	2008	\$79,529
N SPRING BLVD	Tarpon Springs	City Gov't - Non-residen	\$3,902,163	13,353	1964	\$77,533
330 DOUGLAS AVE	Dunedin	City Gov't - Non-residen	\$3,870,817	15,563	2002	\$69,722
750 MAIN ST	Safety Harbor	City Gov't - Non-residen	\$3,753,016	15,383	1959	\$60,952
1140 MARTIN LUTHER KING JR AVE	Dunedin	City Gov't - Non-residen	\$3,711,511	28,114	1972	\$69,284

Address	City	Type	Market Value	Sq Ft	Year	Annual Tax
107 SHORE DR W	Oldsmar	City Gov't - Non-residen	\$3,678,830	300	1980	\$66,104
900 GULF WAY	St. Pete Beach	City Gov't - Non-residen	\$3,579,361	1,312	1971	\$57,914
650 9TH AVE S	Safety Harbor	City Gov't - Non-residen	\$3,561,139	21,494	2003	\$57,067
CHANNEL DR	Largo	City Gov't - Non-residen	\$3,541,108	299	1986	\$69,449
6250 82ND AVE N	Pinellas Park	City Gov't - Non-residen	\$3,532,229	63,874	1977	\$76,933
4981 78TH AVE N	Pinellas Park	City Gov't - Non-residen	\$3,495,811	12,806		\$74,065
3901 30TH AVE N	St. Petersburg	City Gov't - Non-residen	\$3,475,241	16,825	1995	\$71,040
6785 46TH AVE N	St. Petersburg	City Gov't - Non-residen	\$3,465,636	6,428	2023	\$67,269
1400 19TH ST N	St. Petersburg	City Gov't - Non-residen	\$3,440,157	18,579	1954	\$62,811
2300 ROY HANNA DR S	St. Petersburg	City Gov't - Non-residen	\$3,391,432	13,687	2002	\$65,128
3200 CENTRAL AVE	St. Petersburg	City Gov't - Non-residen	\$3,332,032	1,560	2002	\$69,210
12000 90TH AVE N	Seminole	City Gov't - Non-residen	\$3,315,311	2,281	1984	\$61,172
4360 55TH AVE N	St. Petersburg	City Gov't - Non-residen	\$3,311,590	13,051	2006	\$71,685
2401 53RD ST S	Gulfport	City Gov't - Non-residen	\$3,221,627	16,341	1994	\$57,949
2780 DREW ST	Clearwater	City Gov't - Non-residen	\$3,218,002	1,000	1999	\$64,078
332 S GULFVIEW BLVD	Clearwater	City Gov't - Non-residen	\$3,213,722	2,955	1969	\$62,620
51 MAIN ST	Dunedin	City Gov't - Non-residen	\$3,211,736	2,160	1960	\$57,360
3120 MIRIAM ST S	Gulfport	City Gov't - Non-residen	\$3,204,422	2,196	1963	\$57,558
7464 RIDGE RD	Seminole	City Gov't - Non-residen	\$3,187,696	14,520	1976	\$51,948
1035 BURLINGTON AVE N	St. Petersburg	City Gov't - Non-residen	\$3,110,062	10,791	1977	\$62,618
550 LAURA LN	Dunedin	City Gov't - Non-residen	\$3,107,687	18,724	2004	\$50,269
2001 GANDY BLVD N	St. Petersburg	City Gov't - Non-residen	\$3,105,911	13,252	2012	\$57,151
1001 GULF BLVD	Clearwater	City Gov't - Non-residen	\$3,083,557	3,856	1992	\$59,887
3060 N MCMULLEN BOOTH RD	Clearwater	City Gov't - Non-residen	\$3,076,446	5,074	2020	\$59,781
2833 BELCHER RD	Dunedin	City Gov't - Non-residen	\$3,061,121	8,980	1996	\$51,176

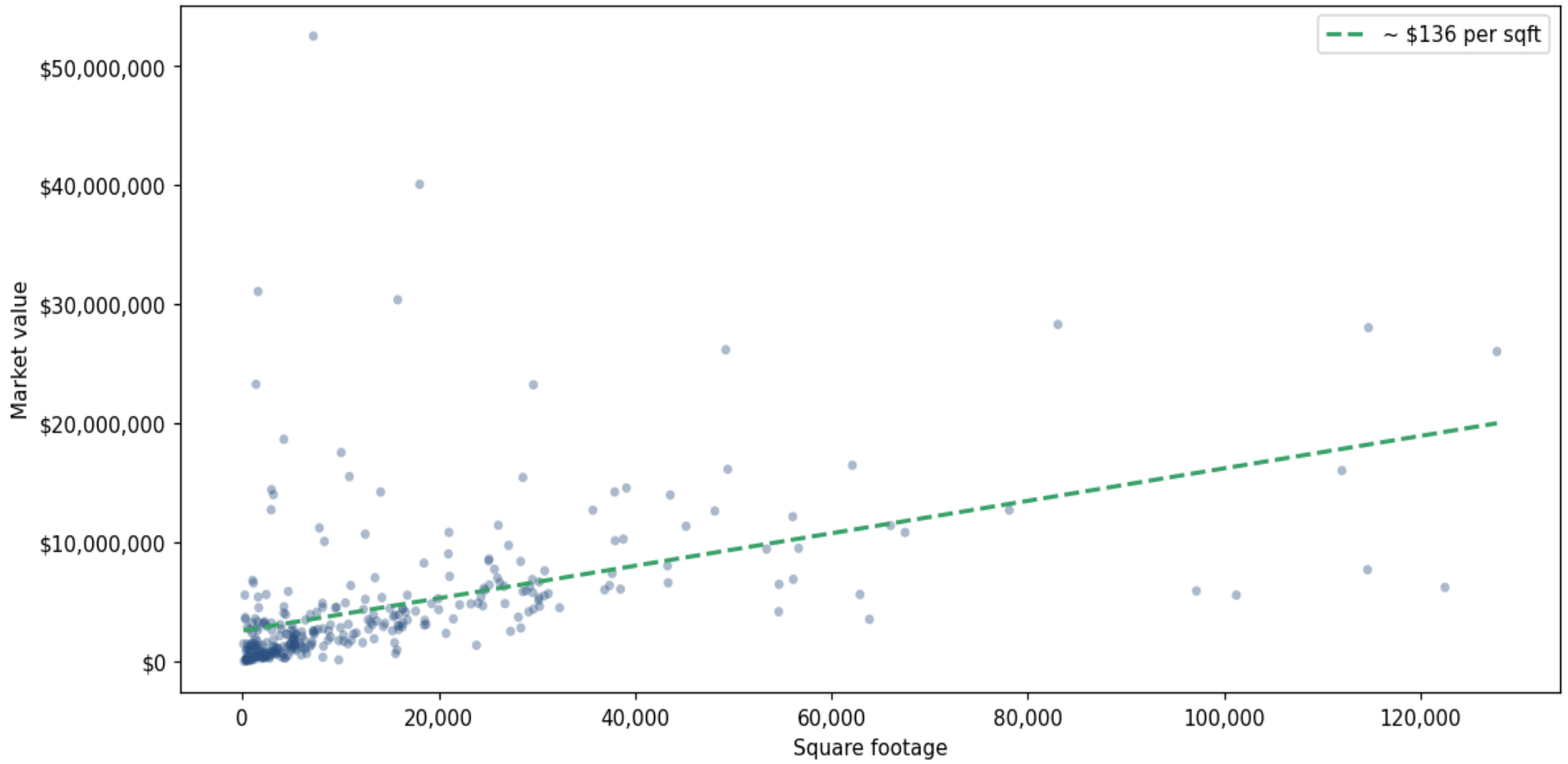
Address	City	Type	Market Value	Sq Ft	Year	Annual Tax
4301 13TH AVE S	St. Petersburg	City Gov't - Non-residen	\$3,050,810	18,527	1979	\$60,776
642 22ND ST S	St. Petersburg	City Gov't - Non-residen	\$3,017,386	15,838	1920	\$61,019
100 STATE ST W	Oldsmar	City Gov't - Non-residen	\$2,988,855	16,000		\$51,541
7650 BRYAN DAIRY RD	Pinellas Park	City Gov't - Non-residen	\$2,931,551	2,500	1985	\$51,878
1075 PONCE DE LEON BLVD	Belleair	City Gov't - Non-residen	\$2,925,380	14,362	2013	\$58,369
11195 70TH AVE	Seminole	City Gov't - Non-residen	\$2,899,809	16,310	2010	\$42,589
1967 N HERCULES AVE	Clearwater	City Gov't - Non-residen	\$2,859,004	512	1972	\$56,594
150 N JASMINE AVE	Tarpon Springs	City Gov't - Non-residen	\$2,853,129	1,488	1995	\$54,941
4600 58TH ST N	Kenneth City	City Gov't - Non-residen	\$2,830,942	10,000	1992	\$46,722
1020 CALUMET ST	Clearwater	City Gov't - Non-residen	\$2,806,396	28,360	1968	\$55,553
2747 SUNSET BLVD	Belleair Bluffs	City Gov't - Non-residen	\$2,733,403	8,212	2001	\$54,040
2765 BAYWAY AVE	Belleair Bluffs	City Gov't - Non-residen	\$2,725,074	3,960	2017	\$50,983
5501 28TH AVE S	Gulfport	City Gov't - Non-residen	\$2,698,037	12,872	1970	\$47,244
3375 TARPON LAKE BLVD	Palm Harbor	City Gov't - Non-residen	\$2,680,039	7,685	2007	\$45,036
400 S WALTON AVE	Tarpon Springs	City Gov't - Non-residen	\$2,673,392	15,910	1980	\$46,377
DR MARTIN LUTHER KING JR ST S	St. Petersburg	City Gov't - Non-residen	\$2,670,589	720	1991	\$54,507
9990 46TH ST	Pinellas Park	City Gov't - Non-residen	\$2,622,387	1,600	2001	\$56,596
1300 S MARTIN LUTHER KING JR AVE	Clearwater	City Gov't - Non-residen	\$2,609,934	3,020	1971	\$51,514
4701 DR MARTIN LUTHER KING JR ST	St. Petersburg	City Gov't - Non-residen	\$2,589,534	4,997	2011	\$51,944
7301 GULF BLVD	St. Pete Beach	City Gov't - Non-residen	\$2,580,393	5,250	1983	\$41,335
565 SKY HARBOR DR	Clearwater	City Gov't - Non-residen	\$2,579,948	7,204	2003	\$50,950
11350 43RD ST N	Pinellas Park	City Gov't - Non-residen	\$2,567,178	15,283	1993	\$46,393
180 4TH ST SW	Largo	City Gov't - Non-residen	\$2,562,697	8,777	1997	\$45,241
905 N MARTIN LUTHER KING JR AVE	Clearwater	City Gov't - Non-residen	\$2,536,382	7,352	2002	\$50,169
1744 9TH AVE N	St. Petersburg	City Gov't - Non-residen	\$2,519,892	27,314	1961	\$52,360

Address	City	Type	Market Value	Sq Ft	Year	Annual Tax
1720 OVERBROOK AVE	Clearwater	City Gov't - Non-residen	\$2,475,423	6,050	2004	\$45,134
225 PINE AVE N	Oldsmar	City Gov't - Non-residen	\$2,443,094	7,218	2003	\$42,916
7047 SUNSET DR S	South Pasadena	City Gov't - Non-residen	\$2,380,445	11,610	1975	\$42,067
2900 31ST ST S	St. Petersburg	City Gov't - Non-residen	\$2,352,713	1,004		\$48,342
5314 23RD AVE S	Gulfport	City Gov't - Non-residen	\$2,351,137	20,751	1976	\$39,437
475 66TH ST N	St. Petersburg	City Gov't - Non-residen	\$2,313,737	5,372	1975	\$42,636
10780 110TH AVE	Seminole	City Gov't - Non-residen	\$2,311,361	4,456	2017	\$38,546
200 MUNICIPAL DR	Madeira Beach	City Gov't - Non-residen	\$2,298,411	11,310	1965	\$37,370
801 PHILLIES DR	Clearwater	City Gov't - Non-residen	\$2,290,563	7,344	1979	\$44,568
2501 4TH ST N	St. Petersburg	City Gov't - Non-residen	\$2,235,112	4,601	1948	\$45,273
17425 GULF BLVD	Redington Shores	City Gov't - Non-residen	\$2,231,905	5,500	2000	\$35,815
861 71ST AVE N	St. Petersburg	City Gov't - Non-residen	\$2,186,217	10,302	1980	\$40,180

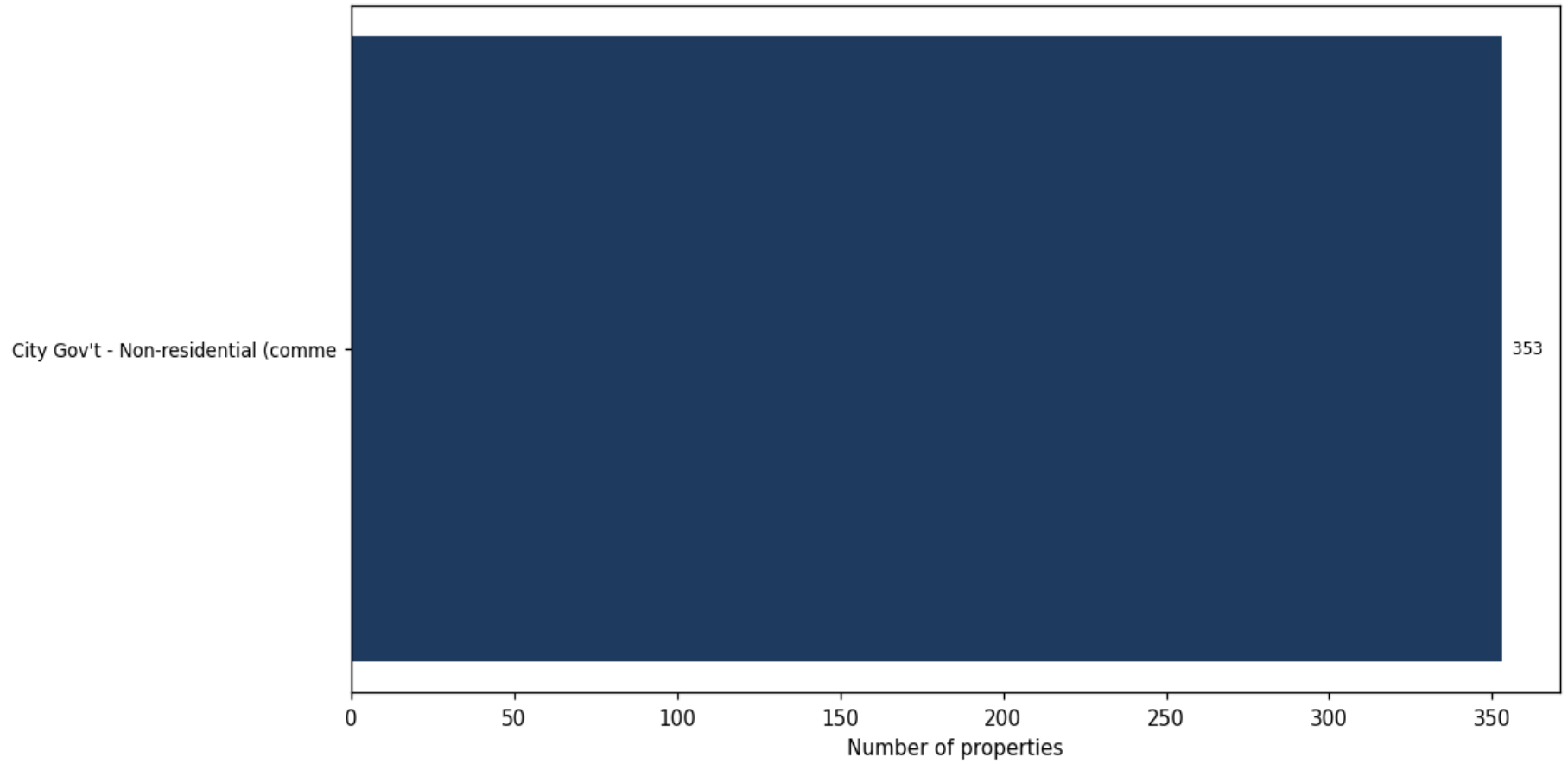
**Market value distribution (n=352, top 1% trimmed for readability)**



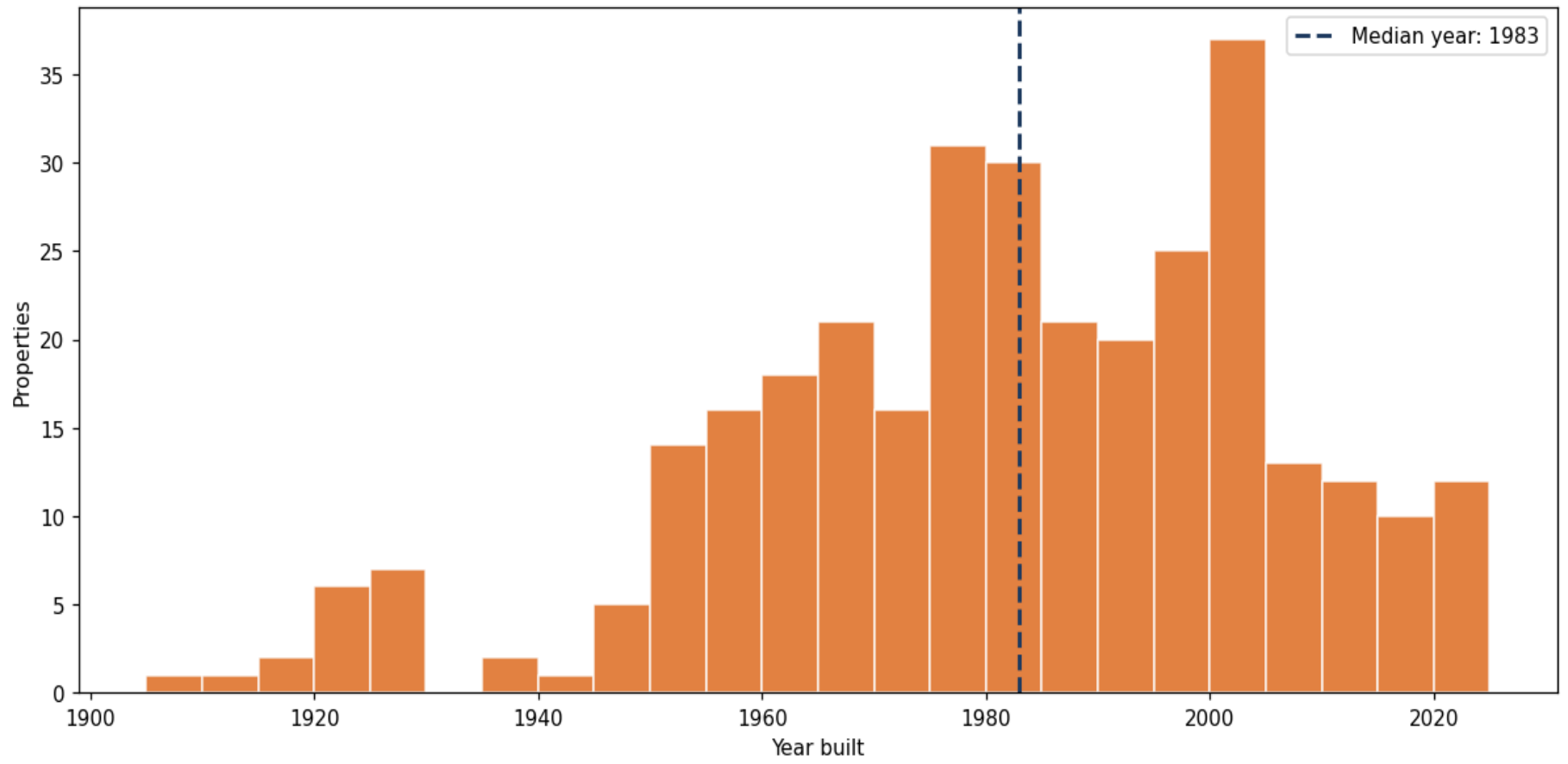
**Building size vs. market value (n=317, outliers trimmed)**



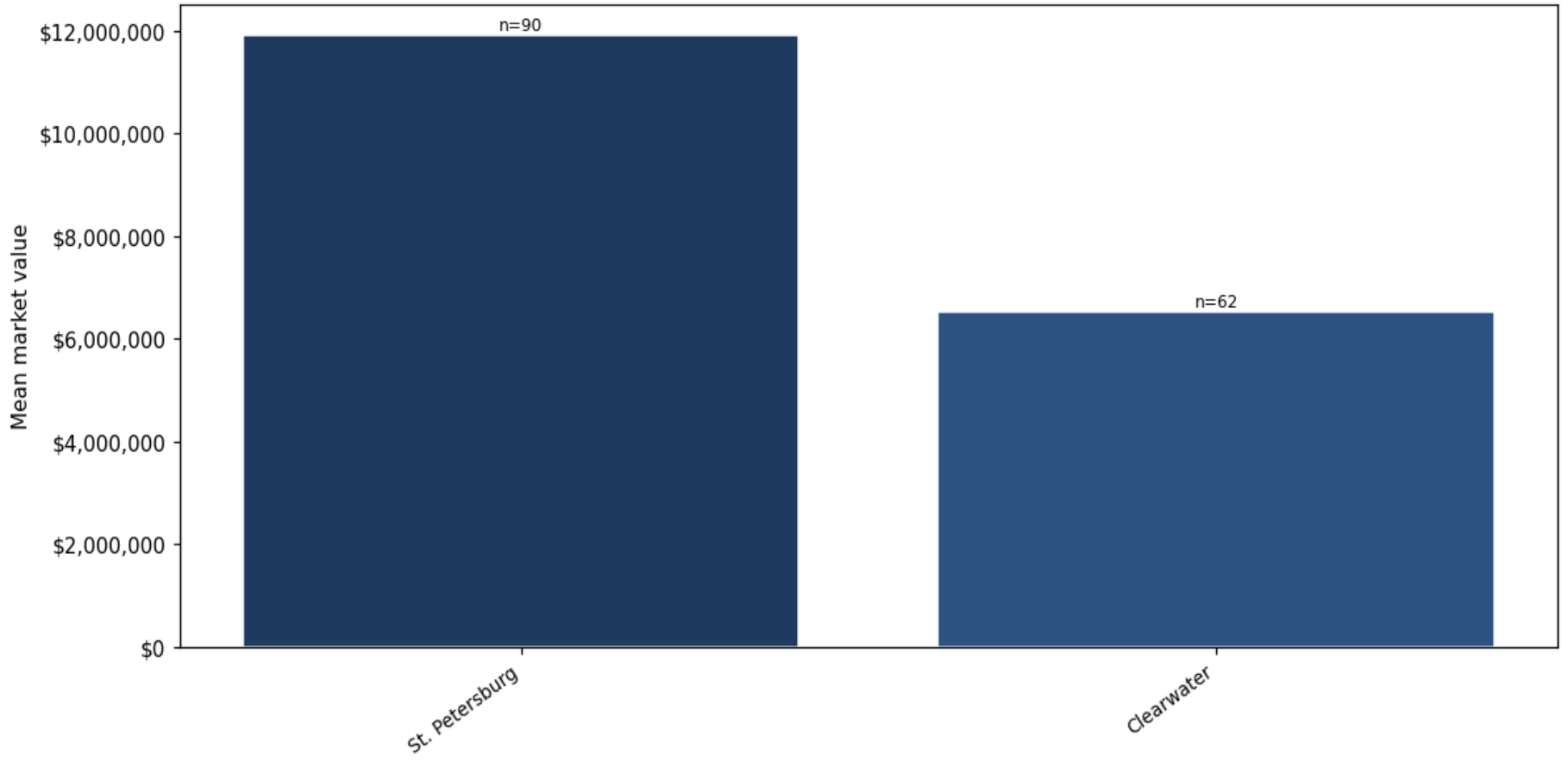
### Top property types by count



**Year built distribution (5-year buckets)**



**Mean market value by city (cities with  $\geq 50$  matches)**



### Market value vs. assessed value (gap = untaxed appreciation)

