

Pinellas Property Market Report

763 matching properties • May 30, 2026

Filters applied	Headline numbers
Property type: Apartments (5-9 units)	Properties matched: 763
	Median market value: \$780,000
	Mean market value: \$854,357
	Min / Max: \$100,000 / \$4,800,000
	Mean square footage: 4,298

Top 200 properties by market value

Address	City	Type	Market Value	Sq Ft	Year	Annual Tax
2302 BEACH TRL	Indian Rocks Beach	Apartments (5-9 units)	\$4,800,000	6,913	2022	\$76,163
102 8TH AVE	St. Pete Beach	Apartments (5-9 units)	\$3,700,000	4,179	1925	\$56,983
14109 N BAYSHORE DR # 9	Madeira Beach	Apartments (5-9 units)	\$3,450,000	13,170	1998	\$55,949
100 PASS A GRILLE WAY	St. Pete Beach	Apartments (5-9 units)	\$2,595,000	4,938	1945	\$41,075
5139 TANGERINE AVE S	Gulfport	Apartments (5-9 units)	\$2,500,000	17,310	2010	\$43,733
205 116TH AVE	Treasure Island	Apartments (5-9 units)	\$2,300,000	11,450	1978	\$44,685
2108 1ST ST	Indian Rocks Beach	Apartments (5-9 units)	\$2,300,000	8,357	2021	\$36,495
2307 BAY BLVD	Indian Rocks Beach	Apartments (5-9 units)	\$2,200,000	5,932	1969	\$34,908
510 BAYVIEW DR NE	St. Petersburg	Apartments (5-9 units)	\$2,015,000	12,792	1970	\$33,863
16 HEILWOOD ST	Clearwater	Apartments (5-9 units)	\$1,950,000	4,389	1938	\$37,737
1147 VICTORIA DR	Dunedin	Apartments (5-9 units)	\$1,900,000	6,534	1968	\$33,443
628 MANDALAY AVE	Clearwater	Apartments (5-9 units)	\$1,885,000	2,758	1935	\$36,479
490 EAST SHORE DR	Clearwater	Apartments (5-9 units)	\$1,850,000	4,494	1939	\$35,802

Address	City	Type	Market Value	Sq Ft	Year	Annual Tax
701 BAY ST NE	St. Petersburg	Apartments (5-9 units)	\$1,830,000	5,780	1948	\$36,453
304 PASS A GRILLE WAY	St. Pete Beach	Apartments (5-9 units)	\$1,825,000	3,298	1946	\$24,851
17620 LEE AVE	Redington Shores	Apartments (5-9 units)	\$1,800,000	3,354	1968	\$27,282
1120 BEACH DR NE	St. Petersburg	Apartments (5-9 units)	\$1,800,000	5,916	1949	\$34,660
9250 BLIND PASS RD	St. Pete Beach	Apartments (5-9 units)	\$1,800,000	8,354	1974	\$28,491
736 13TH ST N	St. Petersburg	Apartments (5-9 units)	\$1,787,189	8,064	1997	\$34,370
10084 GULF BLVD	Treasure Island	Apartments (5-9 units)	\$1,755,000	3,382	1941	\$29,045
15301 2ND ST E	Madeira Beach	Apartments (5-9 units)	\$1,750,000	7,476	1970	\$28,380
159 4TH AVE N	St. Petersburg	Apartments (5-9 units)	\$1,745,000	4,272	1920	\$34,760
18205 GULF BLVD	Redington Shores	Apartments (5-9 units)	\$1,725,000	6,021	1972	\$26,524
611 BAY ESPLANADE	Clearwater	Apartments (5-9 units)	\$1,725,000	3,624	1951	\$33,383
2609 BAY BLVD	Indian Rocks Beach	Apartments (5-9 units)	\$1,700,000	7,124	1975	\$26,974
2517 GARY CIR	Dunedin	Apartments (5-9 units)	\$1,675,000	5,416	1967	\$29,483
2706 PASS A GRILLE WAY	St. Pete Beach	Apartments (5-9 units)	\$1,645,000	4,638	1950	\$28,491
8535 BLIND PASS DR	Treasure Island	Apartments (5-9 units)	\$1,625,000	5,330	1973	\$32,273
601 MONTEREY BLVD NE	St. Petersburg	Apartments (5-9 units)	\$1,615,000	6,643	1950	\$32,170
4590 76TH AVE N	Pinellas Park	Apartments (5-9 units)	\$1,600,000	6,720	1983	\$33,575
117 12TH AVE N	St. Petersburg	Apartments (5-9 units)	\$1,600,000	7,096	1968	\$31,872
524 BAY ST NE	St. Petersburg	Apartments (5-9 units)	\$1,600,000	6,908	1968	\$31,872
638 3RD AVE S	St. Petersburg	Apartments (5-9 units)	\$1,600,000	5,415	1910	\$31,872
626 12TH AVE NE	St. Petersburg	Apartments (5-9 units)	\$1,590,000	5,292	1957	\$31,672
801 GROVE ST N	St. Petersburg	Apartments (5-9 units)	\$1,590,000	6,400	1950	\$31,672
12625 SUNSHINE LN	Treasure Island	Apartments (5-9 units)	\$1,550,000	2,816	1938	\$25,653
20041 GULF BLVD	Indian Shores	Apartments (5-9 units)	\$1,525,000	5,246	1983	\$24,411
336 8TH AVE NE	St. Petersburg	Apartments (5-9 units)	\$1,500,000	8,313	1924	\$29,880

Address	City	Type	Market Value	Sq Ft	Year	Annual Tax
719 BELTREES ST	Dunedin	Apartments (5-9 units)	\$1,500,000	6,036	2023	\$26,403
560 12TH AVE NE	St. Petersburg	Apartments (5-9 units)	\$1,500,000	5,344	1952	\$29,880
1121 BEACH DR NE	St. Petersburg	Apartments (5-9 units)	\$1,500,000	3,078	1953	\$29,880
436 10TH AVE NE	St. Petersburg	Apartments (5-9 units)	\$1,500,000	5,392	1957	\$29,880
521 68TH AVE	St. Pete Beach	Apartments (5-9 units)	\$1,500,000	4,160	1949	\$23,743
185 BRIGHTWATER DR	Clearwater	Apartments (5-9 units)	\$1,475,000	5,733	1969	\$28,545
255 6TH AVE NE	St. Petersburg	Apartments (5-9 units)	\$1,460,000	5,029	1920	\$29,083
3636 5TH AVE N	St. Petersburg	Apartments (5-9 units)	\$1,451,048	8,642	2016	\$25,922
17688 GULF BLVD	Redington Shores	Apartments (5-9 units)	\$1,450,000	4,530	1962	\$23,341
380 3RD ST S	Safety Harbor	Apartments (5-9 units)	\$1,450,000	7,070	1970	\$25,255
241 13TH ST N	St. Petersburg	Apartments (5-9 units)	\$1,434,990	4,597	1981	\$29,706
7210 BOCA CIEGA DR	St. Pete Beach	Apartments (5-9 units)	\$1,425,000	6,046	1974	\$22,556
195 110TH AVE	Treasure Island	Apartments (5-9 units)	\$1,415,000	4,158	1971	\$23,418
210 BRIGHTWATER DR	Clearwater	Apartments (5-9 units)	\$1,400,000	4,732	1961	\$27,093
350 16TH AVE NE	St. Petersburg	Apartments (5-9 units)	\$1,400,000	8,762	1920	\$27,888
857 LYNDHURST ST	Dunedin	Apartments (5-9 units)	\$1,400,000	9,274	1973	\$24,642
12275 3RD ST E	Treasure Island	Apartments (5-9 units)	\$1,400,000	6,012	1973	\$25,322
250 PRESIDENT ST	Dunedin	Apartments (5-9 units)	\$1,400,000	8,118	1972	\$24,642
228 DOLPHIN PT	Clearwater	Apartments (5-9 units)	\$1,400,000	4,513	1965	\$27,093
135 7TH AVE NE	St. Petersburg	Apartments (5-9 units)	\$1,400,000	4,826	1915	\$27,888
4944 31ST AVE S	Gulfport	Apartments (5-9 units)	\$1,373,958	2,197	1939	\$24,035
6538 42ND AVE N	Kenneth City	Apartments (5-9 units)	\$1,350,000	5,028	1958	\$28,421
11755 3RD ST E	Treasure Island	Apartments (5-9 units)	\$1,350,000	5,802	1970	\$24,494
656 BROADWAY	Dunedin	Apartments (5-9 units)	\$1,350,000	5,902	1966	\$23,762
334 21ST AVE S	St. Petersburg	Apartments (5-9 units)	\$1,350,000	5,724	1947	\$26,892

Address	City	Type	Market Value	Sq Ft	Year	Annual Tax
216 6TH AVE NE	St. Petersburg	Apartments (5-9 units)	\$1,350,000	5,799	1910	\$26,892
633 8TH ST N	St. Petersburg	Apartments (5-9 units)	\$1,350,000	4,469	1938	\$26,892
2409 BAY BLVD	Indian Rocks Beach	Apartments (5-9 units)	\$1,350,000	5,041	1972	\$21,421
320 13TH ST N	St. Petersburg	Apartments (5-9 units)	\$1,338,787	4,597	1981	\$27,633
136 18TH AVE NE	St. Petersburg	Apartments (5-9 units)	\$1,335,000	5,695	1920	\$26,593
1706 PASS A GRILLE WAY	St. Pete Beach	Apartments (5-9 units)	\$1,330,000	2,984	1938	\$25,800
7028 GREVILLA AVE S	South Pasadena	Apartments (5-9 units)	\$1,330,000	9,800	1985	\$24,794
216 13TH AVE N	St. Petersburg	Apartments (5-9 units)	\$1,315,000	4,543	1956	\$26,194
11875 3RD ST E	Treasure Island	Apartments (5-9 units)	\$1,300,000	5,416	1969	\$23,418
419 E TARPON AVE	Tarpon Springs	Apartments (5-9 units)	\$1,300,000	3,958	1910	\$24,488
11955 3RD ST E	Treasure Island	Apartments (5-9 units)	\$1,300,000	6,016	1966	\$27,804
11705 3RD ST E	Treasure Island	Apartments (5-9 units)	\$1,300,000	6,034	1969	\$24,825
623 BROADWAY	Dunedin	Apartments (5-9 units)	\$1,300,000	3,560	1965	\$22,882
2208 1ST ST	Indian Rocks Beach	Apartments (5-9 units)	\$1,300,000	5,696	1972	\$21,024
329 ALBERT ST	Dunedin	Apartments (5-9 units)	\$1,300,000	6,122	1973	\$22,882
1287 PIERCE ST	Clearwater	Apartments (5-9 units)	\$1,280,000	5,590	1960	\$24,771
2962 1ST AVE S	St. Petersburg	Apartments (5-9 units)	\$1,275,308	4,080	2005	\$24,817
7027 4TH AVE N	St. Petersburg	Apartments (5-9 units)	\$1,275,000	5,408	1966	\$25,398
226 7TH AVE N	St. Petersburg	Apartments (5-9 units)	\$1,275,000	6,096	1925	\$25,398
2297 DART AVE # 3	Largo	Apartments (5-9 units)	\$1,275,000	6,608	1968	\$24,209
500 129TH AVE E # 6	Madeira Beach	Apartments (5-9 units)	\$1,250,000	5,536	1970	\$20,272
12901 PELICAN LN	Madeira Beach	Apartments (5-9 units)	\$1,250,000	3,336	1951	\$26,758
105 110TH AVE	Treasure Island	Apartments (5-9 units)	\$1,250,000	5,492	1958	\$20,688
309 7TH ST S	St. Petersburg	Apartments (5-9 units)	\$1,250,000	3,710	1920	\$22,908
623 3RD ST N	St. Petersburg	Apartments (5-9 units)	\$1,245,000	5,616	1973	\$24,800

Address	City	Type	Market Value	Sq Ft	Year	Annual Tax
341 7TH ST S	St. Petersburg	Apartments (5-9 units)	\$1,235,000	3,670	1920	\$24,601
12175 3RD ST E	Treasure Island	Apartments (5-9 units)	\$1,225,000	7,200	1967	\$20,274
503 129TH AVE E	Madeira Beach	Apartments (5-9 units)	\$1,225,000	5,636	1972	\$19,866
116 4TH AVE NE	St. Petersburg	Apartments (5-9 units)	\$1,224,000	6,450	1916	\$27,091
2426 1ST AVE S	St. Petersburg	Apartments (5-9 units)	\$1,205,183	4,080	2005	\$23,420
301 13TH ST N	St. Petersburg	Apartments (5-9 units)	\$1,204,094	3,979	1981	\$24,887
115 145TH AVE E	Madeira Beach	Apartments (5-9 units)	\$1,200,000	5,236	1947	\$23,515
794 30TH AVE N	St. Petersburg	Apartments (5-9 units)	\$1,200,000	7,912	1965	\$23,904
745 2ND AVE N	St. Petersburg	Apartments (5-9 units)	\$1,200,000	5,164	1912	\$23,904
14225 N BAYSHORE DR	Madeira Beach	Apartments (5-9 units)	\$1,200,000	5,516	1956	\$25,948
215 6TH AVE NE	St. Petersburg	Apartments (5-9 units)	\$1,200,000	3,690	1925	\$23,904
547 GROVE ST N	St. Petersburg	Apartments (5-9 units)	\$1,200,000	4,456	1920	\$23,904
15398 2ND ST E	Madeira Beach	Apartments (5-9 units)	\$1,200,000	7,320	1945	\$19,461
125 7TH AVE NE	St. Petersburg	Apartments (5-9 units)	\$1,200,000	5,384	1925	\$23,904
5401 64TH AVE N	Pinellas Park	Apartments (5-9 units)	\$1,190,000	7,488	1983	\$24,971
1233 OAK ST NE	St. Petersburg	Apartments (5-9 units)	\$1,190,000	4,938	1925	\$23,704
7211 46TH AVE N	St. Petersburg	Apartments (5-9 units)	\$1,186,214	5,364	2014	\$23,999
244 7TH AVE N	St. Petersburg	Apartments (5-9 units)	\$1,175,000	2,638	1950	\$23,406
521 71ST AVE	St. Pete Beach	Apartments (5-9 units)	\$1,175,000	3,585	1948	\$18,598
2502 BAY BLVD	Indian Rocks Beach	Apartments (5-9 units)	\$1,175,000	6,552	1971	\$18,644
2006 JACKSON ST N	St. Petersburg	Apartments (5-9 units)	\$1,150,000	7,220	1926	\$22,908
800 30TH AVE N	St. Petersburg	Apartments (5-9 units)	\$1,150,000	6,936	1964	\$22,908
301 49TH ST S	St. Petersburg	Apartments (5-9 units)	\$1,150,000	8,446	2021	\$22,908
2865 LOS ALTOS DR	Belleair Bluffs	Apartments (5-9 units)	\$1,150,000	7,116	1970	\$21,640
2800 1ST ST N	St. Petersburg	Apartments (5-9 units)	\$1,150,000	6,223	1925	\$22,908

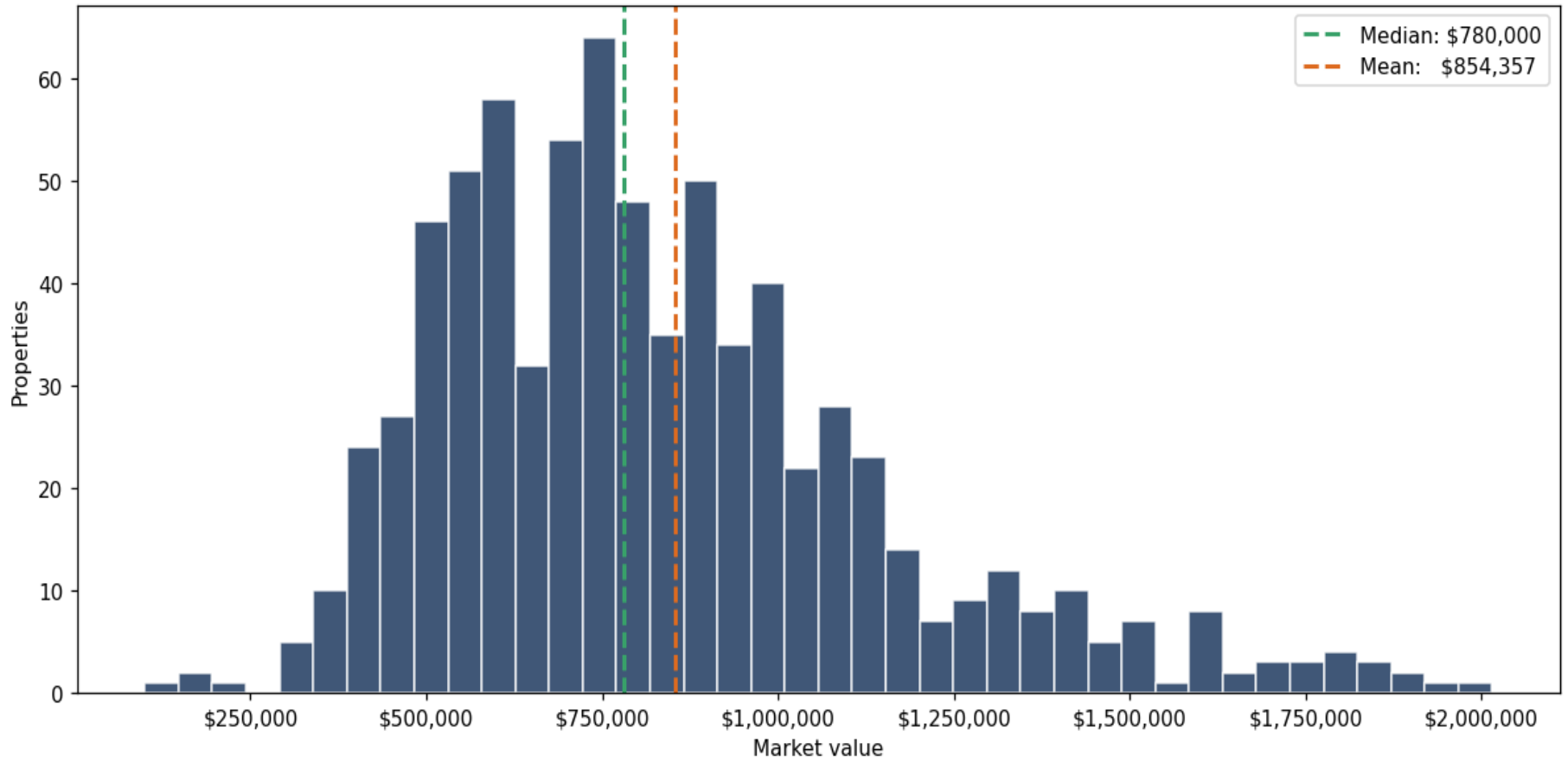
Address	City	Type	Market Value	Sq Ft	Year	Annual Tax
3305 CAMELOT DR	Largo	Apartments (5-9 units)	\$1,150,000	7,460	1973	\$21,835
144 116TH AVE	Treasure Island	Apartments (5-9 units)	\$1,150,000	7,110	1969	\$19,033
1031 COMMODORE ST	Clearwater	Apartments (5-9 units)	\$1,150,000	6,399	1957	\$22,255
1101 BAY ST NE	St. Petersburg	Apartments (5-9 units)	\$1,135,000	4,854	1960	\$22,609
155 BEACH AVE	Redington Shores	Apartments (5-9 units)	\$1,135,000	2,785	1957	\$17,203
125 8TH AVE N	St. Petersburg	Apartments (5-9 units)	\$1,130,000	4,264	1925	\$22,509
332 7TH ST S	St. Petersburg	Apartments (5-9 units)	\$1,125,000	3,944	1920	\$22,410
1028 BASS BLVD	Dunedin	Apartments (5-9 units)	\$1,125,000	4,118	1973	\$19,802
442 JAMES ST	Dunedin	Apartments (5-9 units)	\$1,125,000	5,432	1959	\$19,802
13733 GULF BLVD	Madeira Beach	Apartments (5-9 units)	\$1,125,000	3,560	1968	\$19,866
2454 SHARKEY RD	Clearwater	Apartments (5-9 units)	\$1,125,000	8,422	1979	\$21,771
434 JAMES ST	Dunedin	Apartments (5-9 units)	\$1,125,000	6,532	1985	\$19,802
2476 SHARKEY RD	Clearwater	Apartments (5-9 units)	\$1,125,000	8,808	1978	\$21,771
2470 SHARKEY RD	Clearwater	Apartments (5-9 units)	\$1,125,000	8,928	1979	\$21,771
333 9TH AVE N	St. Petersburg	Apartments (5-9 units)	\$1,120,000	3,485	1915	\$22,310
1200 CHERRY ST NE	St. Petersburg	Apartments (5-9 units)	\$1,115,000	3,112	1947	\$22,210
235 7TH AVE N	St. Petersburg	Apartments (5-9 units)	\$1,115,000	4,942	1925	\$22,210
2135 DART AVE	Largo	Apartments (5-9 units)	\$1,115,000	5,594	1972	\$21,171
316 13TH AVE N	St. Petersburg	Apartments (5-9 units)	\$1,100,000	3,004	1925	\$21,912
7648 34TH ST N	Pinellas Park	Apartments (5-9 units)	\$1,100,000	6,728	1986	\$23,083
164 117TH AVE	Treasure Island	Apartments (5-9 units)	\$1,100,000	4,728	1970	\$18,205
442 30TH AVE N	St. Petersburg	Apartments (5-9 units)	\$1,100,000	3,701	1937	\$21,912
5250 15TH ST N	St. Petersburg	Apartments (5-9 units)	\$1,100,000	6,405	1974	\$21,912
300 31ST AVE N	St. Petersburg	Apartments (5-9 units)	\$1,100,000	7,200	1966	\$21,912
14120 PALM ST	Madeira Beach	Apartments (5-9 units)	\$1,100,000	6,160	1972	\$17,839

Address	City	Type	Market Value	Sq Ft	Year	Annual Tax
201 18TH ST N	St. Petersburg	Apartments (5-9 units)	\$1,100,000	5,596	1948	\$21,912
1601 5TH ST N	St. Petersburg	Apartments (5-9 units)	\$1,100,000	4,800	1957	\$21,912
811 LOTUS PATH	Clearwater	Apartments (5-9 units)	\$1,100,000	3,807	1949	\$21,287
3003 50TH ST S	Gulfport	Apartments (5-9 units)	\$1,100,000	5,624	1966	\$19,242
245 13TH AVE NE	St. Petersburg	Apartments (5-9 units)	\$1,100,000	3,094	1925	\$18,326
206 22ND AVE	Indian Rocks Beach	Apartments (5-9 units)	\$1,100,000	4,676	1972	\$22,214
276 7TH AVE NE	St. Petersburg	Apartments (5-9 units)	\$1,100,000	4,032	1925	\$21,912
255 7TH AVE NE # 1	St. Petersburg	Apartments (5-9 units)	\$1,100,000	3,832	1954	\$21,912
3007 50TH ST S	Gulfport	Apartments (5-9 units)	\$1,100,000	5,624	1967	\$19,242
535 32ND AVE N	St. Petersburg	Apartments (5-9 units)	\$1,100,000	4,976	1972	\$21,912
246 9TH AVE NE	St. Petersburg	Apartments (5-9 units)	\$1,100,000	3,882	1900	\$21,912
1413 SUNSET POINT RD	Clearwater	Apartments (5-9 units)	\$1,090,048	6,225	2014	\$19,440
809 10TH AVE N	St. Petersburg	Apartments (5-9 units)	\$1,081,255	3,949	1920	\$21,538
4015 76TH AVE N	Pinellas Park	Apartments (5-9 units)	\$1,075,000	9,016	1986	\$22,558
665 POINSETTIA AVE	Clearwater	Apartments (5-9 units)	\$1,075,000	3,270	1950	\$20,804
5019 29TH AVE S	Gulfport	Apartments (5-9 units)	\$1,075,000	5,184	1932	\$18,805
144 9TH AVE NE	St. Petersburg	Apartments (5-9 units)	\$1,070,000	3,876	1925	\$21,314
111 177TH AVE W	Redington Shores	Apartments (5-9 units)	\$1,065,000	3,996	1960	\$16,142
333 8TH AVE N	St. Petersburg	Apartments (5-9 units)	\$1,060,000	2,760	1920	\$21,115
505 11TH AVE NE	St. Petersburg	Apartments (5-9 units)	\$1,060,000	2,775	1925	\$21,115
511 4TH AVE S	St. Petersburg	Apartments (5-9 units)	\$1,060,000	3,800	1915	\$21,115
3835 28TH ST N	St. Petersburg	Apartments (5-9 units)	\$1,053,182	6,514	1959	\$19,429
8012 BLIND PASS RD	St. Pete Beach	Apartments (5-9 units)	\$1,050,000	6,102	1971	\$15,829
8100 BLIND PASS RD	St. Pete Beach	Apartments (5-9 units)	\$1,050,000	6,102	1970	\$16,620
730 4TH AVE N	St. Petersburg	Apartments (5-9 units)	\$1,050,000	6,476	1915	\$20,916

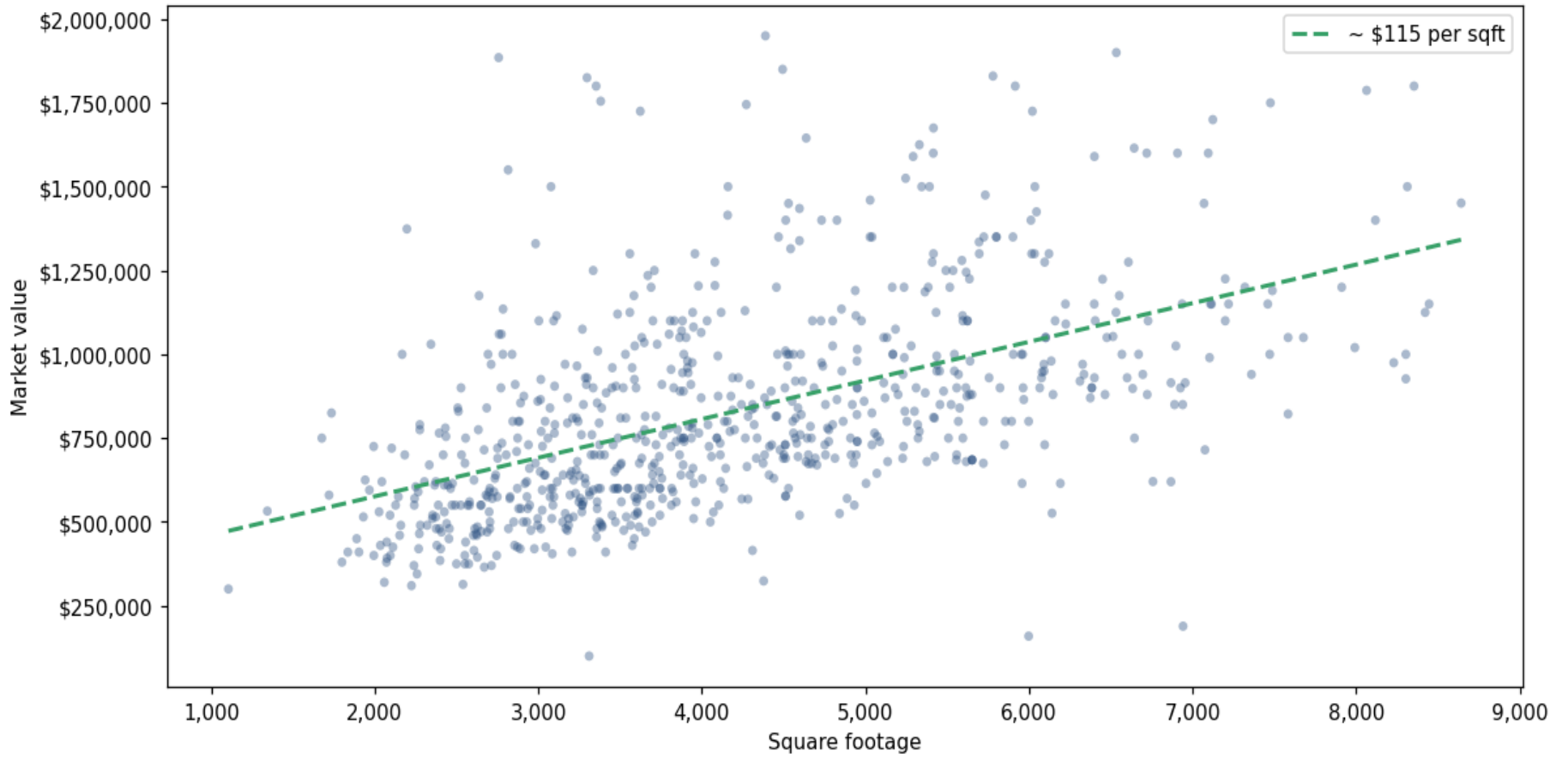
Address	City	Type	Market Value	Sq Ft	Year	Annual Tax
1033 BAY ST NE	St. Petersburg	Apartments (5-9 units)	\$1,050,000	3,633	1925	\$20,916
410 S NIMBUS AVE	Clearwater	Apartments (5-9 units)	\$1,050,000	7,678	1987	\$20,320
2484 SHARKEY RD	Clearwater	Apartments (5-9 units)	\$1,050,000	7,584	1978	\$20,320
26 79TH TER	Treasure Island	Apartments (5-9 units)	\$1,050,000	3,904	1946	\$17,378
2115 1ST ST	Indian Rocks Beach	Apartments (5-9 units)	\$1,050,000	5,112	1958	\$16,661
1717 PASADENA DR	Dunedin	Apartments (5-9 units)	\$1,050,000	3,864	1927	\$18,482
2163 BURLINGTON AVE N	St. Petersburg	Apartments (5-9 units)	\$1,050,000	5,132	1926	\$20,916
340 7TH ST S	St. Petersburg	Apartments (5-9 units)	\$1,035,000	3,648	1920	\$20,617
317 7TH ST S	St. Petersburg	Apartments (5-9 units)	\$1,030,000	2,344	1920	\$20,517
320 13TH AVE N	St. Petersburg	Apartments (5-9 units)	\$1,030,000	3,727	1920	\$20,517
1215 12TH ST	Palm Harbor	Apartments (5-9 units)	\$1,025,000	4,800	1925	\$18,504
1460 EAST BAY DR	Largo	Apartments (5-9 units)	\$1,025,000	6,898	1968	\$19,462
100 23RD AVE	St. Pete Beach	Apartments (5-9 units)	\$1,025,000	3,590	1925	\$16,620
1527 5TH ST N	St. Petersburg	Apartments (5-9 units)	\$1,025,000	5,280	1958	\$20,418
3591 54TH AVE N	St. Petersburg	Apartments (5-9 units)	\$1,020,000	7,992	1982	\$21,474
18220 GULF BLVD	Redington Shores	Apartments (5-9 units)	\$1,015,000	4,950	1948	\$22,735
774 LENTZ RD	Belleair Bluffs	Apartments (5-9 units)	\$1,010,000	4,512	1954	\$19,005
2660 ST JOSEPHS DR W	Dunedin	Apartments (5-9 units)	\$1,010,000	3,364	1965	\$17,778
330 13TH AVE NE	St. Petersburg	Apartments (5-9 units)	\$1,000,000	2,840	1920	\$19,920
742 7TH AVE N	St. Petersburg	Apartments (5-9 units)	\$1,000,000	3,533	1915	\$19,920
3606 1/2 GULF BLVD	St. Pete Beach	Apartments (5-9 units)	\$1,000,000	4,534	1971	\$15,829
1215 17TH AVE N	St. Petersburg	Apartments (5-9 units)	\$1,000,000	6,670	1949	\$19,920
7950 BLIND PASS RD	St. Pete Beach	Apartments (5-9 units)	\$1,000,000	5,953	1972	\$15,829
7301 SUNSET WAY	St. Pete Beach	Apartments (5-9 units)	\$1,000,000	4,463	1947	\$15,829
435 12TH AVE NE	St. Petersburg	Apartments (5-9 units)	\$1,000,000	2,784	1949	\$19,920

Address	City	Type	Market Value	Sq Ft	Year	Annual Tax
915 HIGHLAND AVE	Dunedin	Apartments (5-9 units)	\$1,000,000	4,520	1925	\$17,602
1693 2ND AVE N	St. Petersburg	Apartments (5-9 units)	\$1,000,000	5,168	1973	\$19,920
14231 N BAYSHORE DR	Madeira Beach	Apartments (5-9 units)	\$1,000,000	4,604	1957	\$16,217
428 VIRGINIA LN	Dunedin	Apartments (5-9 units)	\$1,000,000	3,890	1910	\$17,602
2202 57TH ST S	Gulfport	Apartments (5-9 units)	\$1,000,000	7,472	1974	\$17,493
2889 LOS ALTOS DR	Belleair Bluffs	Apartments (5-9 units)	\$1,000,000	5,962	1970	\$18,817
725 8TH ST N	St. Petersburg	Apartments (5-9 units)	\$1,000,000	4,559	1926	\$18,924
40 77TH AVE	Treasure Island	Apartments (5-9 units)	\$1,000,000	5,168	1951	\$16,550
1279 SANTA ROSA ST	Clearwater	Apartments (5-9 units)	\$1,000,000	5,544	1973	\$19,352
4021 DARTMOUTH AVE N	St. Petersburg	Apartments (5-9 units)	\$1,000,000	6,568	1971	\$19,920
9747 GULF BLVD	Treasure Island	Apartments (5-9 units)	\$1,000,000	2,168	1936	\$16,550
601 40TH ST N	St. Petersburg	Apartments (5-9 units)	\$1,000,000	8,304	1970	\$19,920

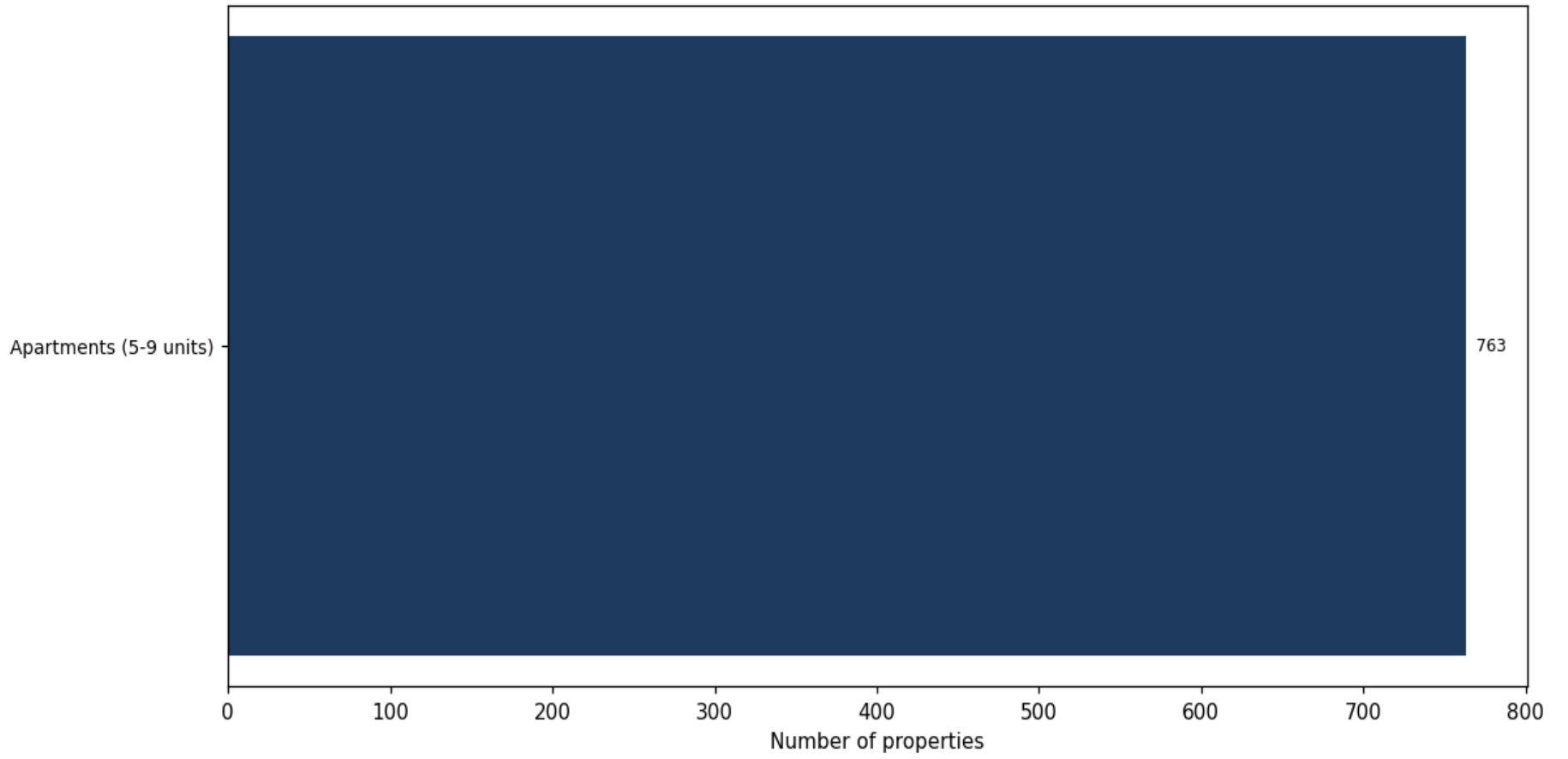
Market value distribution (n=763, top 1% trimmed for readability)



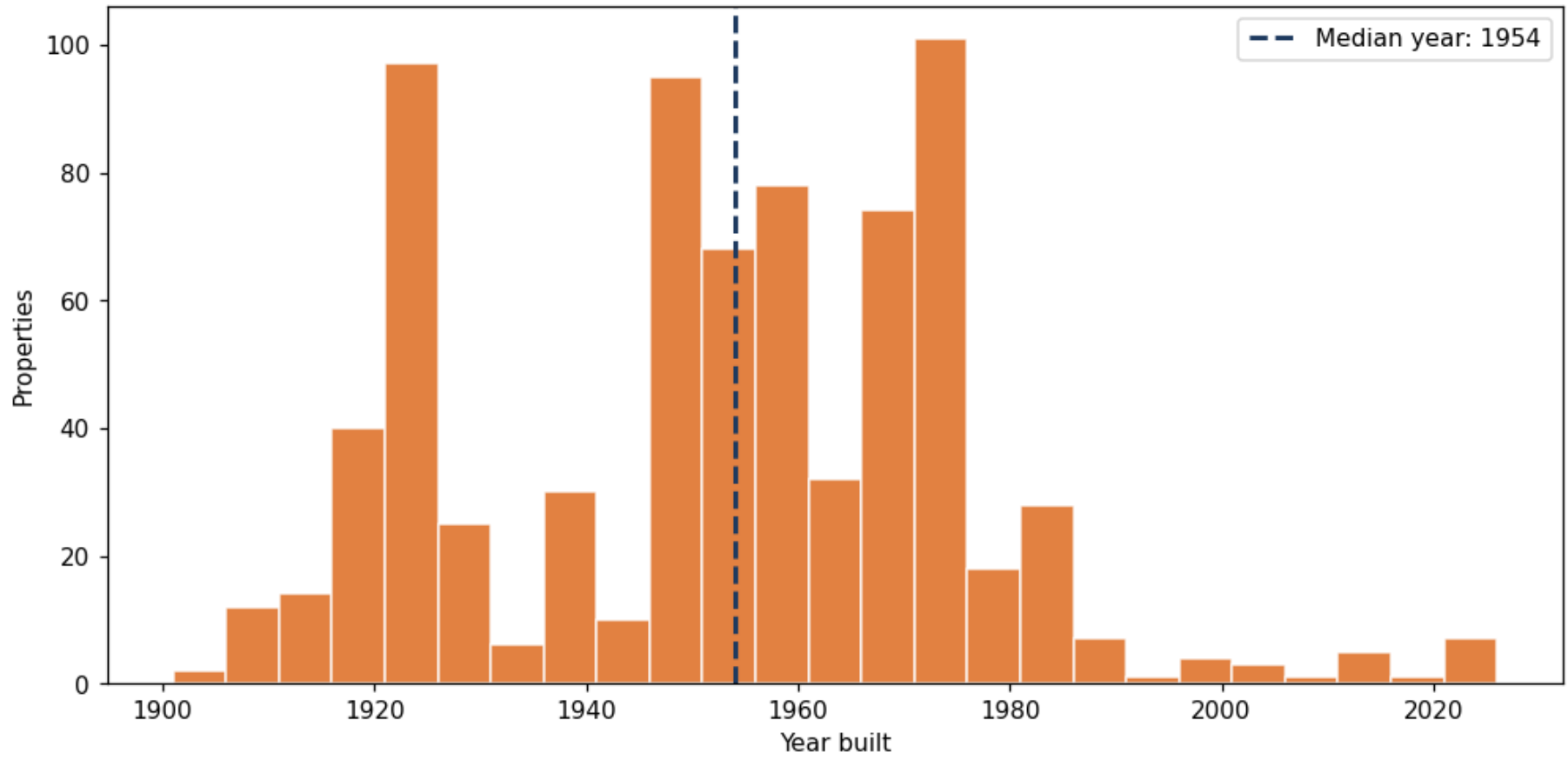
Building size vs. market value (n=747, outliers trimmed)



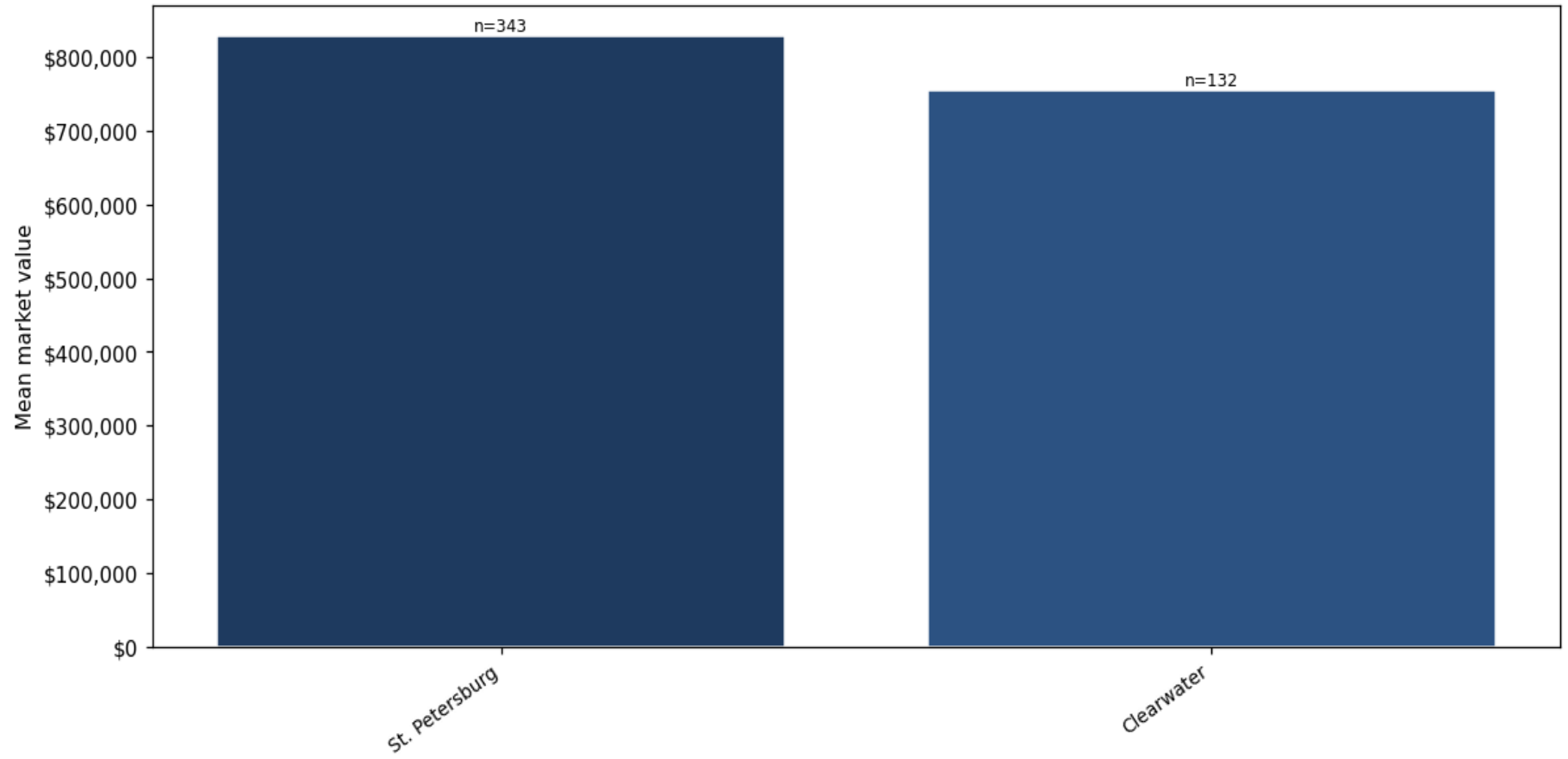
Top property types by count



Year built distribution (5-year buckets)



Mean market value by city (cities with ≥ 50 matches)



Market value vs. assessed value (gap = untaxed appreciation)

