

Pinellas Property Market Report

392 matching properties • May 30, 2026

Filters applied	Headline numbers
City: St. Petersburg	Properties matched: 392
Property type: Single Building Store	Median market value: \$475,000
	Mean market value: \$791,681
	Min / Max: \$52,200 / \$6,090,000
	Mean square footage: 4,431

Top 200 properties by market value

Address	City	Type	Market Value	Sq Ft	Year	Annual Tax
301 3RD ST S	St. Petersburg	Single Building Store	\$6,090,000	14,762	2003	\$121,311
2550 34TH ST N	St. Petersburg	Single Building Store	\$5,415,000	30,794	2017	\$107,865
7610 4TH ST N	St. Petersburg	Single Building Store	\$4,545,000	18,814	2006	\$90,535
1211 1ST AVE N	St. Petersburg	Single Building Store	\$4,300,000	5,647	1946	\$85,655
845 4TH ST N	St. Petersburg	Single Building Store	\$3,625,000	12,436	2001	\$72,209
10801 ROOSEVELT BLVD	St. Petersburg	Single Building Store	\$3,620,000	16,574	2015	\$72,408
3851 4TH ST N	St. Petersburg	Single Building Store	\$3,590,000	14,879	2006	\$71,512
2830 54TH AVE S	St. Petersburg	Single Building Store	\$3,430,000	39,600	1988	\$68,325
3700 34TH ST N	St. Petersburg	Single Building Store	\$3,420,000	15,592	1995	\$68,125
5400 DR MARTIN LUTHER KING JR ST	St. Petersburg	Single Building Store	\$3,335,000	20,722	1954	\$67,229
5405 66TH ST N	St. Petersburg	Single Building Store	\$3,310,000	15,022	2002	\$76,208
3350 CENTRAL AVE	St. Petersburg	Single Building Store	\$3,310,000	14,415	1993	\$66,432
5767 38TH AVE N	St. Petersburg	Single Building Store	\$3,300,000	15,708	2003	\$66,233

Address	City	Type	Market Value	Sq Ft	Year	Annual Tax
900 49TH ST N	St. Petersburg	Single Building Store	\$3,290,000	14,936	1998	\$65,536
2742 4TH ST N	St. Petersburg	Single Building Store	\$3,260,000	15,140	2014	\$69,719
3426 CENTRAL AVE	St. Petersburg	Single Building Store	\$3,210,000	15,680	2008	\$63,942
2501 TYRONE BLVD N	St. Petersburg	Single Building Store	\$3,210,000	15,456	1993	\$63,942
2195 66TH ST N	St. Petersburg	Single Building Store	\$3,190,000	14,488	2005	\$63,544
875 DR MARTIN LUTHER KING JR ST	St. Petersburg	Single Building Store	\$3,180,000	14,452	1993	\$64,241
3077 54TH AVE S	St. Petersburg	Single Building Store	\$3,150,000	14,776	2005	\$62,747
3994 TYRONE BLVD N	St. Petersburg	Single Building Store	\$3,055,000	13,872	1998	\$61,552
5811 4TH ST N	St. Petersburg	Single Building Store	\$3,050,000	9,088	1997	\$62,747
6735 CENTRAL AVE	St. Petersburg	Single Building Store	\$3,020,000	13,436	1995	\$60,157
3535 4TH ST N	St. Petersburg	Single Building Store	\$2,900,000	14,080	1977	\$61,552
3501 54TH AVE S	St. Petersburg	Single Building Store	\$2,850,000	14,094	1999	\$56,771
5400 4TH ST N	St. Petersburg	Single Building Store	\$2,840,000	11,760	1998	\$56,572
2100 66TH ST N	St. Petersburg	Single Building Store	\$2,530,000	11,922	1997	\$50,397
8001 DR MARTIN LUTHER KING JR ST	St. Petersburg	Single Building Store	\$2,465,000	11,200	1998	\$49,600
5345 66TH ST N	St. Petersburg	Single Building Store	\$2,465,000	12,240	1998	\$57,529
5405 49TH ST N	St. Petersburg	Single Building Store	\$2,440,000	12,272	2002	\$56,612
2200 34TH ST N	St. Petersburg	Single Building Store	\$2,420,000	12,436	2001	\$48,206
4901 CENTRAL AVE	St. Petersburg	Single Building Store	\$2,395,000	10,960	1999	\$47,708
130 FOUNTAIN PKWY N	St. Petersburg	Single Building Store	\$2,250,000	5,241	2005	\$45,317
1601 34TH ST N	St. Petersburg	Single Building Store	\$2,170,000	27,349	1970	\$43,226
5801 CENTRAL AVE	St. Petersburg	Single Building Store	\$2,140,000	12,743	2003	\$42,628
2855 66TH ST N	St. Petersburg	Single Building Store	\$2,125,000	10,062	1970	\$42,329
3401 CENTRAL AVE	St. Petersburg	Single Building Store	\$1,985,000	12,050	1994	\$39,541
1101 1ST AVE N	St. Petersburg	Single Building Store	\$1,940,000	4,326	1954	\$38,644

Address	City	Type	Market Value	Sq Ft	Year	Annual Tax
6398 DR MARTIN LUTHER KING JR ST	St. Petersburg	Single Building Store	\$1,930,000	7,542	2019	\$39,043
2240 62ND AVE S	St. Petersburg	Single Building Store	\$1,815,000	12,552	2012	\$36,154
1600 4TH ST N	St. Petersburg	Single Building Store	\$1,772,000	9,188	1948	\$37,668
6666 22ND AVE N	St. Petersburg	Single Building Store	\$1,765,000	6,960	1997	\$35,158
256 2ND ST N	St. Petersburg	Single Building Store	\$1,745,000	7,794	1937	\$34,919
2598 4TH ST N	St. Petersburg	Single Building Store	\$1,730,000	6,630	1997	\$35,855
2200 DR MARTIN LUTHER KING JR ST	St. Petersburg	Single Building Store	\$1,700,000	17,500	1998	\$33,863
2801 4TH ST N	St. Petersburg	Single Building Store	\$1,670,000	3,996	2024	\$33,863
3350 3RD AVE S	St. Petersburg	Single Building Store	\$1,645,000	7,479	2013	\$33,366
2143 TYRONE BLVD N	St. Petersburg	Single Building Store	\$1,590,000	8,970	1986	\$31,672
2216 18TH AVE S	St. Petersburg	Single Building Store	\$1,495,000	9,808	2011	\$30,378
3163 CENTRAL AVE	St. Petersburg	Single Building Store	\$1,475,000	10,319	1963	\$29,382
3050 22ND AVE N	St. Petersburg	Single Building Store	\$1,475,000	6,831	2014	\$29,382
450 34TH ST N	St. Petersburg	Single Building Store	\$1,470,000	13,344	1970	\$29,282
4030 66TH ST N	St. Petersburg	Single Building Store	\$1,450,000	7,360	2016	\$31,053
1922 CENTRAL AVE	St. Petersburg	Single Building Store	\$1,440,000	8,370		\$28,684
1720 16TH ST N	St. Petersburg	Single Building Store	\$1,420,000	9,173	1949	\$28,286
1701 4TH ST S	St. Petersburg	Single Building Store	\$1,415,000	8,236	2014	\$28,186
3401 34TH AVE N	St. Petersburg	Single Building Store	\$1,410,000	8,505	2011	\$28,087
451 4TH ST N	St. Petersburg	Single Building Store	\$1,375,000	3,251	1903	\$28,186
200 16TH ST N	St. Petersburg	Single Building Store	\$1,360,000	3,700	1956	\$27,091
200 34TH ST S	St. Petersburg	Single Building Store	\$1,320,000	8,490	1998	\$26,294
3065 34TH ST N	St. Petersburg	Single Building Store	\$1,315,000	7,007	1974	\$26,194
4142 6TH ST S	St. Petersburg	Single Building Store	\$1,305,000	7,428	2018	\$25,995
2739 DR MARTIN LUTHER KING JR ST	St. Petersburg	Single Building Store	\$1,300,000	10,725	1937	\$28,386

Address	City	Type	Market Value	Sq Ft	Year	Annual Tax
685 30TH AVE N	St. Petersburg	Single Building Store	\$1,260,000	7,324	1926	\$25,896
7121 22ND AVE N	St. Petersburg	Single Building Store	\$1,260,000	9,675	1987	\$25,099
2041 CENTRAL AVE	St. Petersburg	Single Building Store	\$1,260,000	17,586	1959	\$25,099
4125 66TH ST N	St. Petersburg	Single Building Store	\$1,250,000	7,248	2018	\$26,948
3350 TYRONE BLVD N	St. Petersburg	Single Building Store	\$1,245,000	5,654	1996	\$24,800
805 DR MARTIN LUTHER KING JR ST	St. Petersburg	Single Building Store	\$1,235,000	6,710	1998	\$27,888
8123 4TH ST N	St. Petersburg	Single Building Store	\$1,230,000	4,149	1925	\$25,398
2228 CENTRAL AVE	St. Petersburg	Single Building Store	\$1,220,000	4,356	1951	\$24,302
1041 DR MARTIN LUTHER KING JR ST	St. Petersburg	Single Building Store	\$1,215,000	9,153	2005	\$24,202
2063 1ST AVE S	St. Petersburg	Single Building Store	\$1,210,000	12,082	1948	\$24,103
5515 4TH ST N	St. Petersburg	Single Building Store	\$1,170,000	6,820	1988	\$25,398
347 62ND AVE N	St. Petersburg	Single Building Store	\$1,130,000	3,604	1972	\$22,509
899 34TH ST N	St. Petersburg	Single Building Store	\$1,120,000	9,800	1955	\$22,310
3210 CENTRAL AVE	St. Petersburg	Single Building Store	\$1,110,000	1,940	1996	\$22,111
201 17TH ST S	St. Petersburg	Single Building Store	\$1,065,000	7,816	2024	\$21,214
785 4TH ST N	St. Petersburg	Single Building Store	\$1,055,000	3,200	2005	\$23,804
2301 TYRONE BLVD N	St. Petersburg	Single Building Store	\$1,050,000	3,500	2003	\$20,916
950 34TH ST N	St. Petersburg	Single Building Store	\$1,050,000	7,798	1973	\$20,916
957 CENTRAL AVE	St. Petersburg	Single Building Store	\$1,025,000	2,700	1939	\$20,418
5900 9TH AVE N	St. Petersburg	Single Building Store	\$1,025,000	9,851	1973	\$20,418
2914 1ST AVE N	St. Petersburg	Single Building Store	\$1,010,000	4,000	1965	\$20,119
2001 4TH ST N	St. Petersburg	Single Building Store	\$1,000,000	2,880	1967	\$20,119
2025 CENTRAL AVE	St. Petersburg	Single Building Store	\$1,000,000	8,079	1946	\$19,920
4211 49TH ST N	St. Petersburg	Single Building Store	\$985,000	2,739	1950	\$21,579
4401 4TH ST N	St. Petersburg	Single Building Store	\$965,000	1,918	1973	\$19,223

Address	City	Type	Market Value	Sq Ft	Year	Annual Tax
432 1ST ST N	St. Petersburg	Single Building Store	\$964,400	3,428	1920	\$19,701
550 1ST AVE N	St. Petersburg	Single Building Store	\$960,000	4,473	1925	\$19,820
5601 34TH ST N	St. Petersburg	Single Building Store	\$960,000	6,670	1998	\$22,461
8700 4TH ST N	St. Petersburg	Single Building Store	\$960,000	2,464	2020	\$19,123
2909 22ND AVE N	St. Petersburg	Single Building Store	\$950,000	11,862	1976	\$18,924
150 22ND ST S	St. Petersburg	Single Building Store	\$950,000	4,604	2006	\$18,924
1626 18TH AVE S	St. Petersburg	Single Building Store	\$945,000	9,900	2006	\$18,824
620 1ST AVE S	St. Petersburg	Single Building Store	\$930,000	5,523	1947	\$18,525
2000 CENTRAL AVE	St. Petersburg	Single Building Store	\$920,000	4,460	1957	\$18,326
1291 34TH ST N	St. Petersburg	Single Building Store	\$905,000	4,800	1965	\$18,027
1301 4TH ST N	St. Petersburg	Single Building Store	\$895,000	3,532	1969	\$19,322
1001 ARLINGTON AVE N	St. Petersburg	Single Building Store	\$895,000	4,180	1965	\$17,828
5450 4TH ST N	St. Petersburg	Single Building Store	\$885,000	4,250	2000	\$18,625
2808 4TH ST N	St. Petersburg	Single Building Store	\$880,000	4,224	1951	\$18,525
5625 38TH AVE N	St. Petersburg	Single Building Store	\$870,000	7,000	1984	\$19,422
201 17TH ST S	St. Petersburg	Single Building Store	\$860,000	5,626	2024	\$17,131
2401 CENTRAL AVE	St. Petersburg	Single Building Store	\$860,000	3,111	2012	\$17,131
2533 22ND AVE N	St. Petersburg	Single Building Store	\$850,000	8,520	1994	\$16,932
301 DR MARTIN LUTHER KING JR ST	St. Petersburg	Single Building Store	\$847,200	2,279	1949	\$16,876
6130 CENTRAL AVE	St. Petersburg	Single Building Store	\$845,000	5,917	1969	\$16,832
3000 4TH ST N	St. Petersburg	Single Building Store	\$840,000	3,600	1990	\$19,521
1940 CENTRAL AVE	St. Petersburg	Single Building Store	\$840,000	3,150	1947	\$20,119
2662 CENTRAL AVE	St. Petersburg	Single Building Store	\$835,000	2,910	1959	\$16,633
4444 4TH ST N	St. Petersburg	Single Building Store	\$835,000	3,208	1977	\$17,430
2601 4TH ST N	St. Petersburg	Single Building Store	\$820,000	2,968	1925	\$16,832

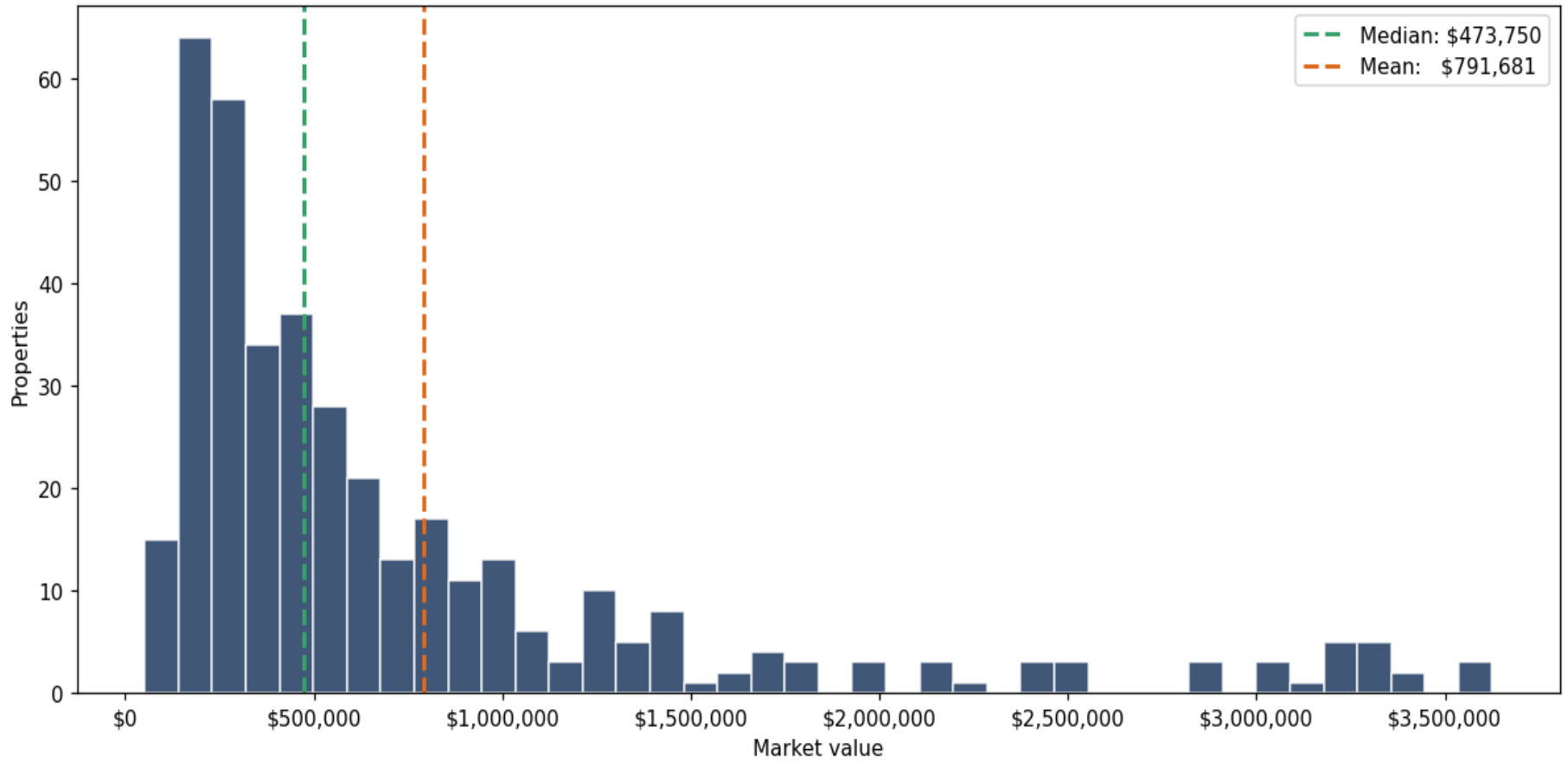
Address	City	Type	Market Value	Sq Ft	Year	Annual Tax
2545 CENTRAL AVE	St. Petersburg	Single Building Store	\$815,000	4,906	1925	\$18,924
2030 CENTRAL AVE	St. Petersburg	Single Building Store	\$805,000	3,168	1937	\$16,035
1291 34TH ST S	St. Petersburg	Single Building Store	\$800,000	7,980	1985	\$15,936
2060 1ST AVE S	St. Petersburg	Single Building Store	\$800,000	3,264	1959	\$15,936
801 59TH ST N	St. Petersburg	Single Building Store	\$785,000	5,052	1955	\$15,637
2401 DR MARTIN LUTHER KING JR ST	St. Petersburg	Single Building Store	\$780,000	4,000	1974	\$16,334
4703 PARK ST N	St. Petersburg	Single Building Store	\$775,000	6,250	1975	\$18,632
2301 DR MARTIN LUTHER KING JR ST	St. Petersburg	Single Building Store	\$770,000	4,118	1978	\$17,131
2541 CENTRAL AVE	St. Petersburg	Single Building Store	\$770,000	2,775	1925	\$15,338
927 CENTRAL AVE	St. Petersburg	Single Building Store	\$750,000	2,700	1935	\$14,940
4500 4TH ST N	St. Petersburg	Single Building Store	\$745,000	1,980	1983	\$14,840
4545 4TH ST N	St. Petersburg	Single Building Store	\$735,000	4,524	1960	\$16,832
2801 34TH ST S	St. Petersburg	Single Building Store	\$715,000	4,309	1968	\$14,243
4910 CENTRAL AVE	St. Petersburg	Single Building Store	\$715,000	3,784	1952	\$14,243
2222 1ST AVE S	St. Petersburg	Single Building Store	\$710,000	6,240	1956	\$14,143
4021 PARK ST N	St. Petersburg	Single Building Store	\$705,000	3,060	1993	\$15,579
3301 PINELLAS POINT DR S	St. Petersburg	Single Building Store	\$705,000	3,750	1976	\$14,043
1912 CENTRAL AVE	St. Petersburg	Single Building Store	\$700,000	3,328	1940	\$18,924
2520 CENTRAL AVE	St. Petersburg	Single Building Store	\$700,000	2,250	1949	\$13,944
6748 CENTRAL AVE	St. Petersburg	Single Building Store	\$700,000	4,200	1985	\$13,944
3101 CENTRAL AVE	St. Petersburg	Single Building Store	\$690,000	3,125	1954	\$13,745
1411 16TH ST N	St. Petersburg	Single Building Store	\$680,000	2,109	1954	\$13,545
8520 4TH ST N	St. Petersburg	Single Building Store	\$675,000	1,960	1985	\$13,446
3435 30TH AVE N	St. Petersburg	Single Building Store	\$675,000	4,040	1957	\$13,446
5505 66TH ST N	St. Petersburg	Single Building Store	\$665,000	4,950	1988	\$16,044

Address	City	Type	Market Value	Sq Ft	Year	Annual Tax
4257 54TH AVE N	St. Petersburg	Single Building Store	\$660,000	7,289	2007	\$14,737
6920 4TH ST N	St. Petersburg	Single Building Store	\$655,000	3,034	1978	\$13,944
3148 28TH ST N	St. Petersburg	Single Building Store	\$655,000	6,222	1999	\$13,047
5198 34TH ST N	St. Petersburg	Single Building Store	\$655,000	6,632	1957	\$14,737
8461 4TH ST N	St. Petersburg	Single Building Store	\$645,000	4,185	1964	\$14,641
3055 1ST AVE S	St. Petersburg	Single Building Store	\$645,000	2,151	1964	\$12,848
4940 CENTRAL AVE	St. Petersburg	Single Building Store	\$640,000	3,828	1966	\$12,749
3001 22ND AVE N	St. Petersburg	Single Building Store	\$640,000	7,350	1966	\$12,749
2260 1ST AVE S	St. Petersburg	Single Building Store	\$635,000	3,000	1956	\$12,649
3450 34TH ST N	St. Petersburg	Single Building Store	\$615,000	4,250	1969	\$12,251
2920 DR MARTIN LUTHER KING JR ST	St. Petersburg	Single Building Store	\$610,000	10,764	1955	\$12,151
301 34TH ST N	St. Petersburg	Single Building Store	\$605,000	5,518	1965	\$12,051
321 10TH AVE N	St. Petersburg	Single Building Store	\$600,000	2,100	1940	\$12,450
750 WELCH CSWY	St. Petersburg	Single Building Store	\$600,000	7,990	1952	\$11,694
2157 CENTRAL AVE	St. Petersburg	Single Building Store	\$595,000	2,552	1925	\$11,852
1033 34TH ST N	St. Petersburg	Single Building Store	\$590,000	8,606	1962	\$11,753
1201 CENTRAL AVE	St. Petersburg	Single Building Store	\$590,000	720	1940	\$11,753
4022 54TH AVE N	St. Petersburg	Single Building Store	\$590,000	7,414	1954	\$13,158
3600 34TH ST N	St. Petersburg	Single Building Store	\$580,000	5,919	1978	\$11,553
2534 CENTRAL AVE	St. Petersburg	Single Building Store	\$575,000	1,890	1935	\$11,454
226 DR MARTIN LUTHER KING JR ST	St. Petersburg	Single Building Store	\$575,000	6,136	1948	\$11,454
3001 5TH AVE N	St. Petersburg	Single Building Store	\$570,000	5,000	1967	\$11,354
1211 1ST AVE N	St. Petersburg	Single Building Store	\$565,000	2,247	1970	\$11,255
301 34TH ST S	St. Petersburg	Single Building Store	\$555,000	5,293	1987	\$11,055
3120 DR MARTIN LUTHER KING JR ST	St. Petersburg	Single Building Store	\$555,000	3,300	1969	\$11,055

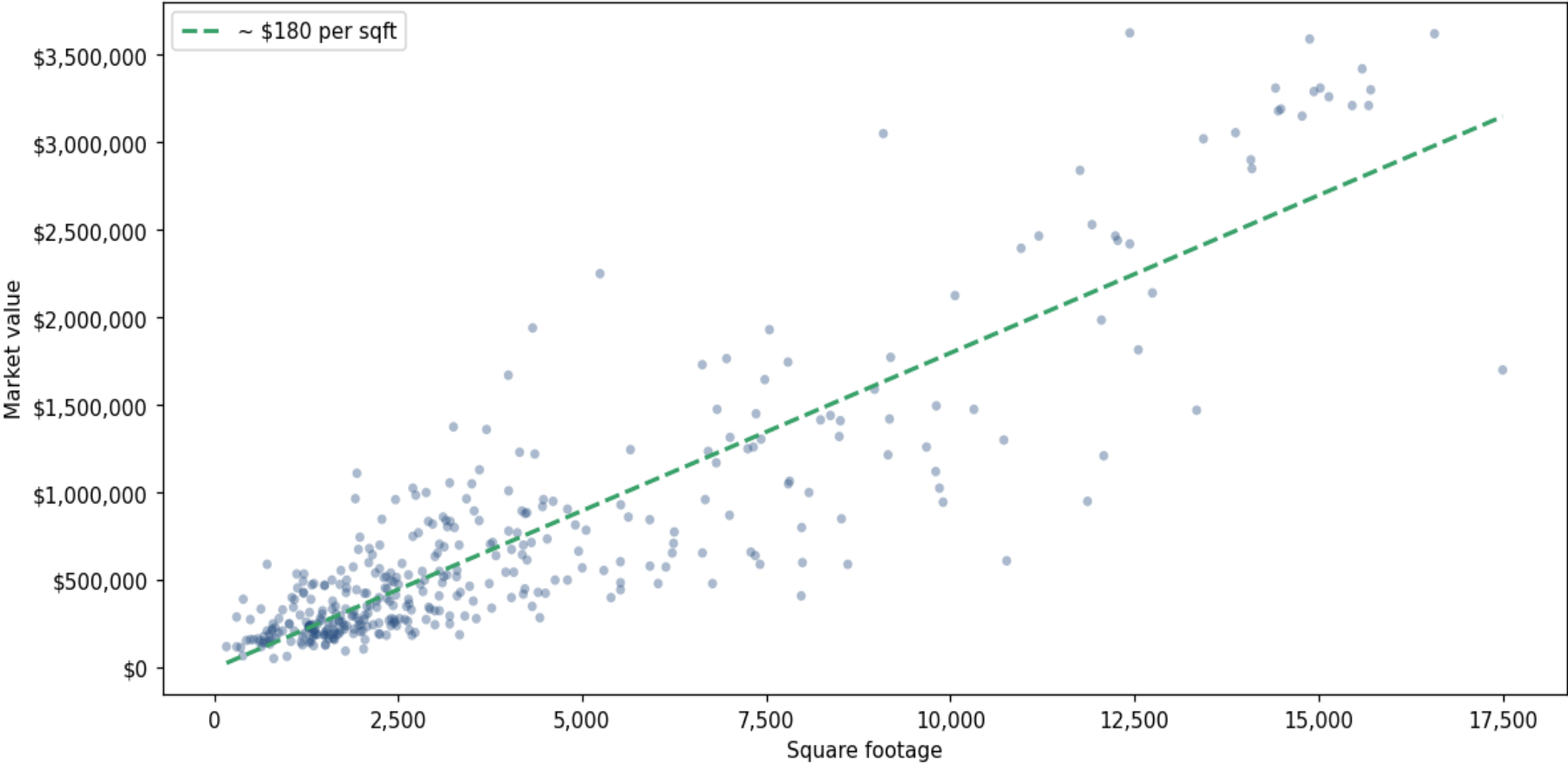
Address	City	Type	Market Value	Sq Ft	Year	Annual Tax
3101 DR MARTIN LUTHER KING JR ST	St. Petersburg	Single Building Store	\$555,000	1,722	1962	\$11,055
7134 CENTRAL AVE	St. Petersburg	Single Building Store	\$550,000	3,060	1953	\$11,255
2945 49TH ST N	St. Petersburg	Single Building Store	\$550,000	2,827	1952	\$10,956
2210 CENTRAL AVE	St. Petersburg	Single Building Store	\$545,000	3,960	1952	\$10,856
5242 CENTRAL AVE	St. Petersburg	Single Building Store	\$545,000	4,070	1971	\$14,342
1005 1ST AVE N	St. Petersburg	Single Building Store	\$540,000	2,190	1952	\$10,757
3030 1ST AVE N	St. Petersburg	Single Building Store	\$540,000	2,400	1972	\$10,757
110 2ND ST N	St. Petersburg	Single Building Store	\$535,000	1,221	2023	\$10,657
1717 1ST AVE N	St. Petersburg	Single Building Store	\$535,000	1,122	1920	\$10,657
2235 1ST AVE S	St. Petersburg	Single Building Store	\$530,000	2,640	1957	\$10,557
1949 1ST AVE S	St. Petersburg	Single Building Store	\$530,000	3,164	1949	\$10,557
300 34TH ST N	St. Petersburg	Single Building Store	\$520,000	3,294	1966	\$10,358
2646 CENTRAL AVE	St. Petersburg	Single Building Store	\$520,000	2,340	1949	\$10,358
1068 4TH ST N	St. Petersburg	Single Building Store	\$520,000	3,120	1925	\$10,956
3001 CENTRAL AVE	St. Petersburg	Single Building Store	\$515,000	2,306	1954	\$10,259
2851 1ST AVE N	St. Petersburg	Single Building Store	\$515,000	2,478	1928	\$10,259
408 33RD AVE N	St. Petersburg	Single Building Store	\$500,000	4,631	1925	\$11,055
2601 22ND AVE N	St. Petersburg	Single Building Store	\$500,000	4,800	1960	\$9,960
650 CENTRAL AVE	St. Petersburg	Single Building Store	\$500,000	1,600	1920	\$9,960
3931 CENTRAL AVE	St. Petersburg	Single Building Store	\$500,000	1,800	1962	\$9,960
300 2ND ST S # 1	St. Petersburg	Single Building Store	\$500,000	2,860	2023	\$20,318
544 1ST AVE N	St. Petersburg	Single Building Store	\$495,000	2,400	1928	\$10,856
3153 22ND AVE N	St. Petersburg	Single Building Store	\$493,700	1,209	1961	\$9,834
1745 1ST AVE S	St. Petersburg	Single Building Store	\$490,000	2,440	1949	\$9,761
7110 CENTRAL AVE	St. Petersburg	Single Building Store	\$485,000	3,100	1953	\$9,661

Address	City	Type	Market Value	Sq Ft	Year	Annual Tax
6491 54TH AVE N	St. Petersburg	Single Building Store	\$485,000	5,520	1990	\$11,689
4601 HAINES RD N	St. Petersburg	Single Building Store	\$480,000	6,769	1965	\$9,561
2619 23RD AVE N	St. Petersburg	Single Building Store	\$480,000	6,030	1979	\$9,561
5400 LEELAND ST S	St. Petersburg	Single Building Store	\$480,000	3,737	1968	\$9,561
325 1ST ST S	St. Petersburg	Single Building Store	\$480,000	1,355	2023	\$9,561
3263 5TH AVE S	St. Petersburg	Single Building Store	\$476,000	2,800	1956	\$9,482
3658 CENTRAL AVE	St. Petersburg	Single Building Store	\$475,000	1,710	1956	\$9,462
1957 1ST AVE S	St. Petersburg	Single Building Store	\$475,000	2,504	1953	\$9,462
285 1ST ST S	St. Petersburg	Single Building Store	\$472,500	1,328	2023	\$9,412
3050 1ST AVE N	St. Petersburg	Single Building Store	\$470,000	1,500	1959	\$9,362
648 CENTRAL AVE	St. Petersburg	Single Building Store	\$470,000	1,500	1923	\$9,362
4101 CENTRAL AVE	St. Petersburg	Single Building Store	\$465,000	3,470	1949	\$9,263

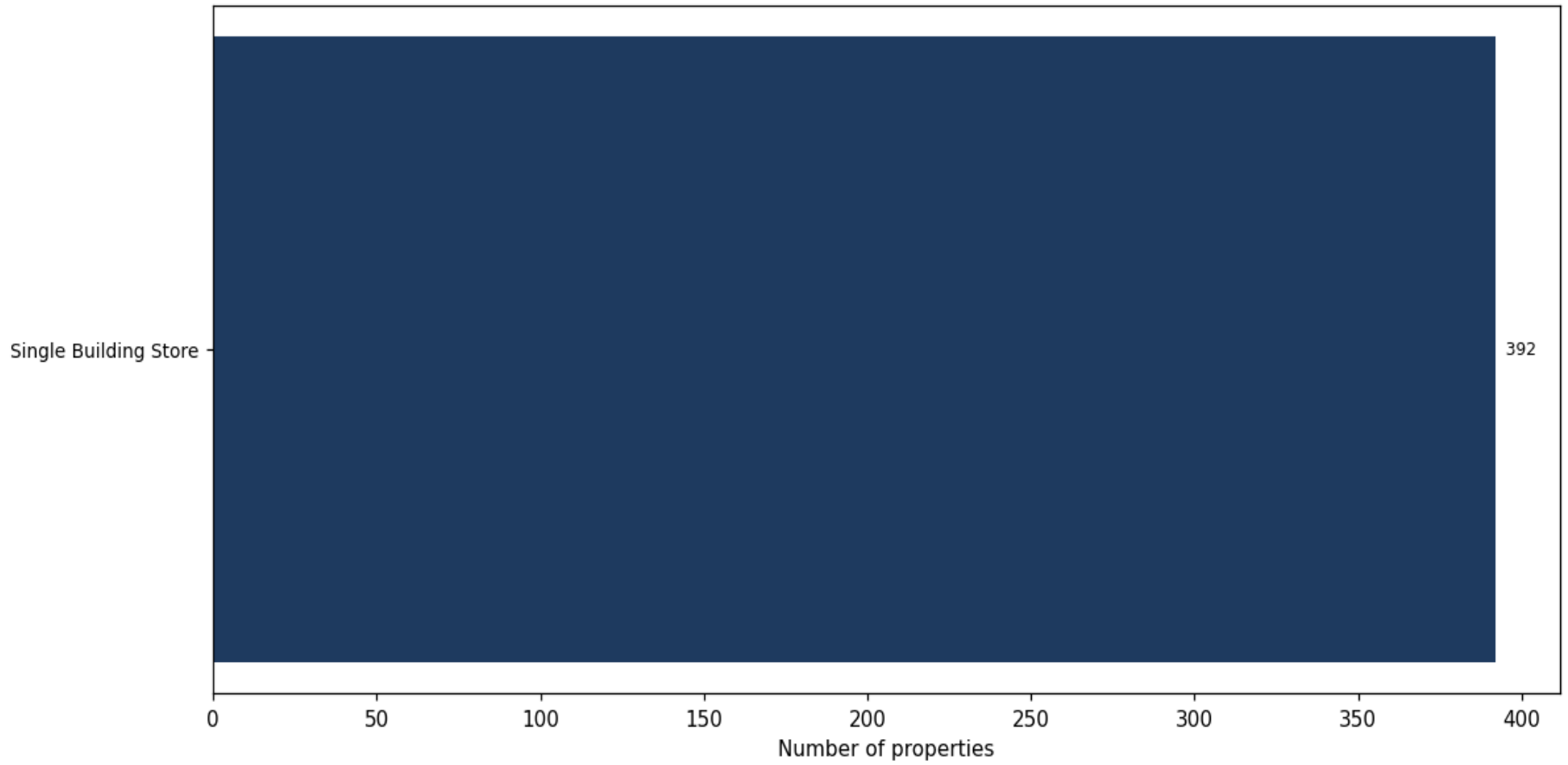
Market value distribution (n=392, top 1% trimmed for readability)



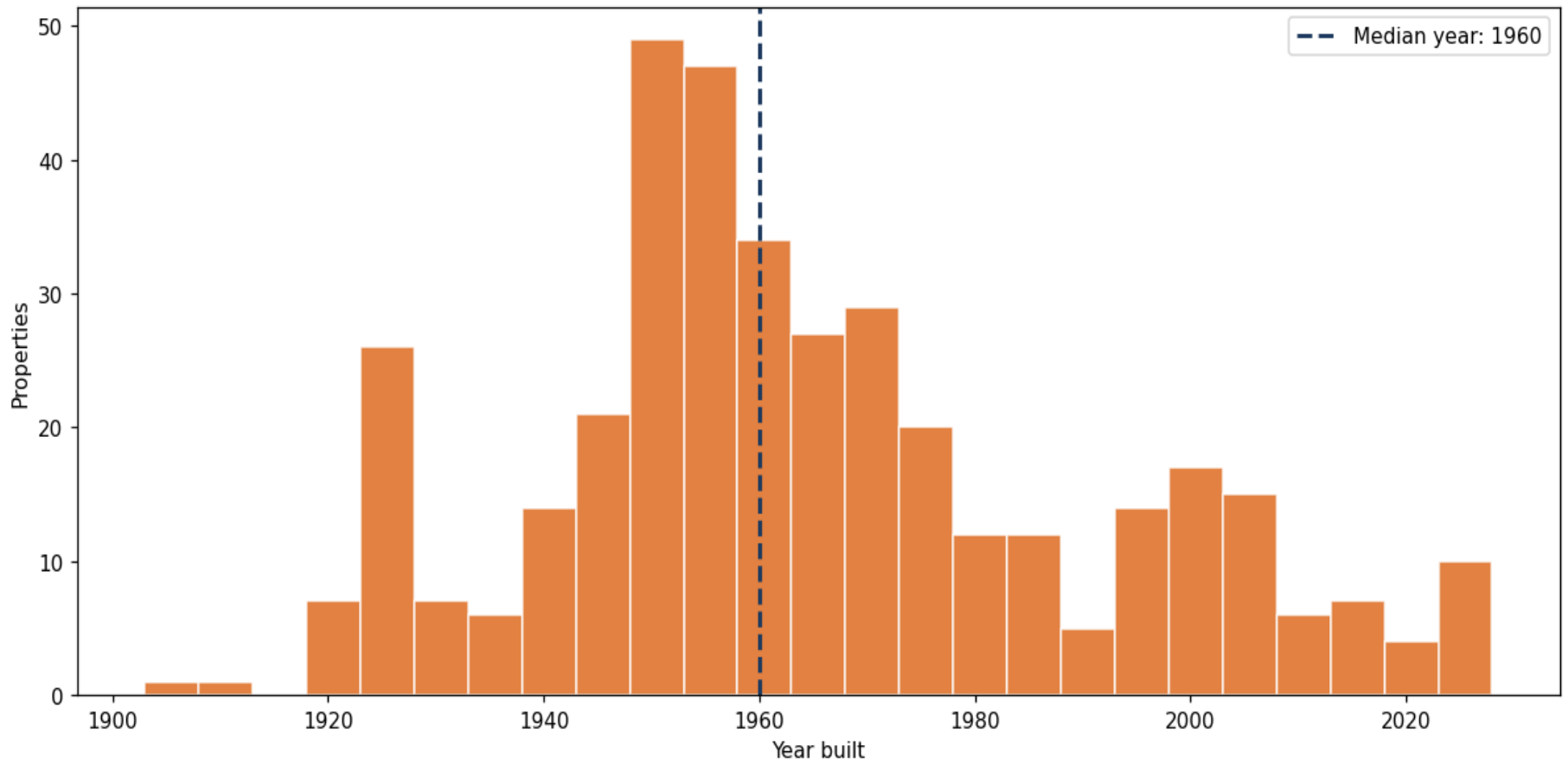
Building size vs. market value (n=384, outliers trimmed)



Top property types by count



Year built distribution (5-year buckets)



Market value vs. assessed value (gap = untaxed appreciation)

