

Pinellas Property Market Report

3,274 matching properties • May 30, 2026

| Filters applied | Headline numbers |
|--|--|
| City: St. Petersburg | Properties matched: 3,274 |
| Property type: Planned Unit Development | Median market value: \$428,063 |
| | Mean market value: \$470,895 |
| | Min / Max: \$17,000 / \$1,837,474 |
| | Mean square footage: 1,800 |

Top 200 properties by market value

| Address | City | Type | Market Value | Sq Ft | Year | Annual Tax |
|----------------------|----------------|--------------------------|--------------|-------|------|------------|
| 2100 4TH ST S | St. Petersburg | Planned Unit Development | — | 2,324 | 2025 | — |
| 2120 4TH ST S | St. Petersburg | Planned Unit Development | — | 2,324 | 2025 | — |
| 2112 4TH ST S | St. Petersburg | Planned Unit Development | — | 2,324 | 2025 | — |
| 2116 4TH ST S | St. Petersburg | Planned Unit Development | — | 2,294 | 2025 | — |
| 51 BAYVIEW CT S # B | St. Petersburg | Planned Unit Development | \$1,837,474 | 2,614 | 2024 | \$27,011 |
| 55 BAYVIEW CT S # A | St. Petersburg | Planned Unit Development | \$1,837,083 | 2,614 | 2024 | \$26,999 |
| 51 BAYVIEW CT S # A | St. Petersburg | Planned Unit Development | \$1,819,802 | 2,614 | 2024 | \$26,757 |
| 9 FRANKLIN CT S # A | St. Petersburg | Planned Unit Development | \$1,715,690 | 2,614 | 2022 | \$25,612 |
| 9 FRANKLIN CT S # D | St. Petersburg | Planned Unit Development | \$1,715,684 | 2,614 | 2023 | \$25,123 |
| 11 FRANKLIN CT S # A | St. Petersburg | Planned Unit Development | \$1,692,041 | 2,614 | 2022 | \$25,131 |
| 11 FRANKLIN CT S # D | St. Petersburg | Planned Unit Development | \$1,692,041 | 2,614 | 2022 | \$25,131 |
| 55 BAYVIEW CT S # B | St. Petersburg | Planned Unit Development | \$1,639,501 | 2,370 | 2024 | \$24,410 |
| 21 FRANKLIN CT S # D | St. Petersburg | Planned Unit Development | \$1,588,090 | 2,574 | 2020 | \$24,099 |

| Address | City | Type | Market Value | Sq Ft | Year | Annual Tax |
|----------------------|----------------|--------------------------|--------------|-------|------|------------|
| 21 FRANKLIN CT S # A | St. Petersburg | Planned Unit Development | \$1,577,877 | 2,574 | 2020 | \$23,795 |
| 9 FRANKLIN CT S # C | St. Petersburg | Planned Unit Development | \$1,542,813 | 2,370 | 2023 | \$22,778 |
| 9 FRANKLIN CT S # B | St. Petersburg | Planned Unit Development | \$1,542,813 | 2,370 | 2023 | \$22,778 |
| 17 FRANKLIN CT S # D | St. Petersburg | Planned Unit Development | \$1,539,543 | 2,574 | 2019 | \$23,073 |
| 17 FRANKLIN CT S # A | St. Petersburg | Planned Unit Development | \$1,527,192 | 2,574 | 2020 | \$22,718 |
| 11 FRANKLIN CT S # C | St. Petersburg | Planned Unit Development | \$1,523,605 | 2,370 | 2022 | \$22,797 |
| 11 FRANKLIN CT S # B | St. Petersburg | Planned Unit Development | \$1,523,605 | 2,370 | 2022 | \$22,797 |
| 601 11TH AVE NE | St. Petersburg | Planned Unit Development | \$1,519,401 | 3,338 | 2016 | \$25,467 |
| 605 11TH AVE NE | St. Petersburg | Planned Unit Development | \$1,515,938 | 3,338 | 2016 | \$25,401 |
| 615 11TH AVE NE | St. Petersburg | Planned Unit Development | \$1,507,141 | 3,338 | 2016 | \$25,229 |
| 611 11TH AVE NE | St. Petersburg | Planned Unit Development | \$1,486,741 | 3,338 | 2016 | \$24,806 |
| 22 FRANKLIN CT S # D | St. Petersburg | Planned Unit Development | \$1,453,039 | 2,574 | 2022 | \$21,579 |
| 22 FRANKLIN CT S # A | St. Petersburg | Planned Unit Development | \$1,453,039 | 2,574 | 2022 | \$21,579 |
| 537 4TH AVE S | St. Petersburg | Planned Unit Development | \$1,452,540 | 3,240 | 2023 | \$27,031 |
| 541 4TH AVE S | St. Petersburg | Planned Unit Development | \$1,452,540 | 3,240 | 2023 | \$27,031 |
| 553 4TH AVE S | St. Petersburg | Planned Unit Development | \$1,452,540 | 3,240 | 2023 | \$27,031 |
| 577 4TH AVE S | St. Petersburg | Planned Unit Development | \$1,452,540 | 3,240 | 2023 | \$27,031 |
| 21 FRANKLIN CT S # C | St. Petersburg | Planned Unit Development | \$1,425,272 | 2,334 | 2020 | \$21,632 |
| 25 FRANKLIN CT # B | St. Petersburg | Planned Unit Development | \$1,413,717 | 2,817 | 2007 | \$21,026 |
| 17 FRANKLIN CT S # B | St. Petersburg | Planned Unit Development | \$1,411,814 | 2,334 | 2020 | \$21,428 |
| 18 FRANKLIN CT S # D | St. Petersburg | Planned Unit Development | \$1,410,544 | 2,574 | 2020 | \$21,302 |
| 26 FRANKLIN CT S # A | St. Petersburg | Planned Unit Development | \$1,391,662 | 2,574 | 2020 | \$21,180 |
| 35 FRANKLIN CT S | St. Petersburg | Planned Unit Development | \$1,384,272 | 2,950 | 1996 | \$24,560 |
| 26 FRANKLIN CT S # D | St. Petersburg | Planned Unit Development | \$1,378,790 | 2,574 | 2020 | \$20,839 |
| 17 FRANKLIN CT S # C | St. Petersburg | Planned Unit Development | \$1,374,590 | 2,334 | 2019 | \$20,717 |

| Address | City | Type | Market Value | Sq Ft | Year | Annual Tax |
|----------------------|----------------|--------------------------|--------------|-------|------|------------|
| 18 FRANKLIN CT S # A | St. Petersburg | Planned Unit Development | \$1,364,972 | 2,574 | 2020 | \$20,639 |
| 25 FRANKLIN CT # C | St. Petersburg | Planned Unit Development | \$1,360,546 | 2,529 | 2007 | \$20,427 |
| 14 FRANKLIN CT S # A | St. Petersburg | Planned Unit Development | \$1,353,254 | 2,574 | 2018 | \$20,655 |
| 14 FRANKLIN CT S # D | St. Petersburg | Planned Unit Development | \$1,353,254 | 2,574 | 2018 | \$20,655 |
| 33 JEFFERSON CT S | St. Petersburg | Planned Unit Development | \$1,344,657 | 2,780 | 1994 | \$24,751 |
| 16 FRANKLIN CT S # D | St. Petersburg | Planned Unit Development | \$1,339,280 | 2,574 | 2017 | \$20,472 |
| 235 4TH AVE N | St. Petersburg | Planned Unit Development | \$1,333,936 | 2,986 | 2017 | \$27,999 |
| 231 4TH AVE N | St. Petersburg | Planned Unit Development | \$1,333,936 | 2,986 | 2017 | \$27,999 |
| 25 FRANKLIN CT # A | St. Petersburg | Planned Unit Development | \$1,331,034 | 2,529 | 2007 | \$19,832 |
| 16 FRANKLIN CT S # A | St. Petersburg | Planned Unit Development | \$1,313,038 | 2,574 | 2017 | \$19,928 |
| 22 FRANKLIN CT S # C | St. Petersburg | Planned Unit Development | \$1,310,359 | 2,334 | 2022 | \$19,595 |
| 22 FRANKLIN CT S # B | St. Petersburg | Planned Unit Development | \$1,310,359 | 2,334 | 2022 | \$19,595 |
| 35 JEFFERSON CT S | St. Petersburg | Planned Unit Development | \$1,293,053 | 2,485 | 1994 | \$24,209 |
| 233 4TH AVE N | St. Petersburg | Planned Unit Development | \$1,288,148 | 2,939 | 2017 | \$27,039 |
| 151 5TH AVE NE | St. Petersburg | Planned Unit Development | \$1,288,143 | 2,751 | 2017 | \$26,973 |
| 157 5TH AVE NE | St. Petersburg | Planned Unit Development | \$1,288,143 | 2,751 | 2017 | \$26,973 |
| 141 5TH AVE NE | St. Petersburg | Planned Unit Development | \$1,288,143 | 2,751 | 2017 | \$26,973 |
| 147 5TH AVE NE | St. Petersburg | Planned Unit Development | \$1,288,143 | 2,751 | 2017 | \$26,973 |
| 32 JEFFERSON CT S | St. Petersburg | Planned Unit Development | \$1,281,881 | 2,710 | 1994 | \$23,641 |
| 1724 PARK ST N | St. Petersburg | Planned Unit Development | \$1,273,884 | 3,810 | 2006 | \$24,379 |
| 1722 PARK ST N | St. Petersburg | Planned Unit Development | \$1,261,371 | 3,810 | 2006 | \$23,889 |
| 1712 PARK ST N | St. Petersburg | Planned Unit Development | \$1,261,134 | 3,810 | 2006 | \$24,125 |
| 1716 PARK ST N | St. Petersburg | Planned Unit Development | \$1,261,134 | 3,810 | 2006 | \$24,288 |
| 1720 PARK ST N | St. Petersburg | Planned Unit Development | \$1,257,223 | 3,810 | 2006 | \$23,889 |
| 1714 PARK ST N | St. Petersburg | Planned Unit Development | \$1,249,981 | 3,810 | 2006 | \$24,051 |

| Address | City | Type | Market Value | Sq Ft | Year | Annual Tax |
|----------------------|----------------|--------------------------|--------------|-------|------|------------|
| 14 JEFFERSON CT S | St. Petersburg | Planned Unit Development | \$1,249,810 | 2,817 | 2005 | \$18,707 |
| 26 FRANKLIN CT S # B | St. Petersburg | Planned Unit Development | \$1,246,140 | 2,334 | 2020 | \$18,951 |
| 26 FRANKLIN CT S # C | St. Petersburg | Planned Unit Development | \$1,246,140 | 2,334 | 2020 | \$18,951 |
| 650 BEACH DR NE | St. Petersburg | Planned Unit Development | \$1,241,038 | 2,770 | 2006 | \$20,727 |
| 640 BEACH DR NE | St. Petersburg | Planned Unit Development | \$1,241,038 | 2,770 | 2006 | \$20,727 |
| 15 JEFFERSON CT S | St. Petersburg | Planned Unit Development | \$1,229,441 | 2,817 | 2007 | \$18,282 |
| 21 FRANKLIN CT S # B | St. Petersburg | Planned Unit Development | \$1,228,250 | 2,334 | 2020 | \$21,428 |
| 14 FRANKLIN CT S # C | St. Petersburg | Planned Unit Development | \$1,219,962 | 2,334 | 2018 | \$18,750 |
| 14 FRANKLIN CT S # B | St. Petersburg | Planned Unit Development | \$1,219,962 | 2,334 | 2018 | \$18,750 |
| 16 JEFFERSON CT S | St. Petersburg | Planned Unit Development | \$1,212,344 | 2,529 | 2005 | \$18,216 |
| 143 5TH AVE NE | St. Petersburg | Planned Unit Development | \$1,211,174 | 2,619 | 2017 | \$25,393 |
| 155 5TH AVE NE | St. Petersburg | Planned Unit Development | \$1,211,174 | 2,619 | 2017 | \$25,393 |
| 145 5TH AVE NE | St. Petersburg | Planned Unit Development | \$1,208,182 | 2,619 | 2017 | \$25,331 |
| 153 5TH AVE NE | St. Petersburg | Planned Unit Development | \$1,208,182 | 2,619 | 2017 | \$25,331 |
| 18 FRANKLIN CT S # C | St. Petersburg | Planned Unit Development | \$1,204,665 | 2,334 | 2019 | \$18,208 |
| 16 FRANKLIN CT S # B | St. Petersburg | Planned Unit Development | \$1,201,951 | 2,334 | 2017 | \$18,326 |
| 1843 5TH ST N | St. Petersburg | Planned Unit Development | \$1,201,039 | 2,550 | 2016 | \$20,231 |
| 1718 PARK ST N | St. Petersburg | Planned Unit Development | \$1,199,517 | 3,320 | 2006 | \$22,555 |
| 18 FRANKLIN CT S # B | St. Petersburg | Planned Unit Development | \$1,199,171 | 2,334 | 2019 | \$18,093 |
| 1867 5TH ST N | St. Petersburg | Planned Unit Development | \$1,192,042 | 2,550 | 2016 | \$19,965 |
| 1835 5TH ST N | St. Petersburg | Planned Unit Development | \$1,192,042 | 2,550 | 2016 | \$19,965 |
| 559 4TH AVE S | St. Petersburg | Planned Unit Development | \$1,188,182 | 2,755 | 2023 | \$22,122 |
| 565 4TH AVE S | St. Petersburg | Planned Unit Development | \$1,188,182 | 2,755 | 2023 | \$22,122 |
| 571 4TH AVE S | St. Petersburg | Planned Unit Development | \$1,188,182 | 2,755 | 2023 | \$22,122 |
| 12 JEFFERSON CT S | St. Petersburg | Planned Unit Development | \$1,178,150 | 2,529 | 2005 | \$17,701 |

| Address | City | Type | Market Value | Sq Ft | Year | Annual Tax |
|----------------------|----------------|--------------------------|--------------|-------|------|------------|
| 1839 5TH ST N | St. Petersburg | Planned Unit Development | \$1,169,320 | 3,089 | 2017 | \$22,152 |
| 1855 5TH ST N | St. Petersburg | Planned Unit Development | \$1,169,320 | 3,089 | 2017 | \$22,152 |
| 1851 5TH ST N | St. Petersburg | Planned Unit Development | \$1,168,739 | 2,550 | 2016 | \$19,561 |
| 1859 5TH ST N | St. Petersburg | Planned Unit Development | \$1,168,739 | 2,550 | 2016 | \$19,876 |
| 16 FRANKLIN CT S # C | St. Petersburg | Planned Unit Development | \$1,166,682 | 2,334 | 2017 | \$17,805 |
| 8 LINCOLN AVE S | St. Petersburg | Planned Unit Development | \$1,158,332 | 2,195 | 2006 | \$17,485 |
| 11 JEFFERSON CT S | St. Petersburg | Planned Unit Development | \$1,157,552 | 2,529 | 2007 | \$17,246 |
| 17 JEFFERSON CT S | St. Petersburg | Planned Unit Development | \$1,157,552 | 2,529 | 2007 | \$17,246 |
| 438 REGENT LN N | St. Petersburg | Planned Unit Development | \$1,147,292 | 2,180 | 2018 | \$22,477 |
| 400 REGENT LN N | St. Petersburg | Planned Unit Development | \$1,134,542 | 2,180 | 2018 | \$22,214 |
| 401 REGENT LN N | St. Petersburg | Planned Unit Development | \$1,134,542 | 2,180 | 2018 | \$22,214 |
| 437 REGENT LN N | St. Petersburg | Planned Unit Development | \$1,134,542 | 2,180 | 2018 | \$22,214 |
| 12 LINCOLN AVE S | St. Petersburg | Planned Unit Development | \$1,115,169 | 2,334 | 2006 | \$17,014 |
| 409 REGENT LN N | St. Petersburg | Planned Unit Development | \$1,113,087 | 2,180 | 2018 | \$21,803 |
| 417 REGENT LN N | St. Petersburg | Planned Unit Development | \$1,113,087 | 2,180 | 2018 | \$21,803 |
| 425 REGENT LN N | St. Petersburg | Planned Unit Development | \$1,113,087 | 2,180 | 2018 | \$21,803 |
| 433 REGENT LN N | St. Petersburg | Planned Unit Development | \$1,113,087 | 2,180 | 2018 | \$21,803 |
| 424 REGENT LN N | St. Petersburg | Planned Unit Development | \$1,113,087 | 2,180 | 2018 | \$21,803 |
| 404 REGENT LN N | St. Petersburg | Planned Unit Development | \$1,113,087 | 2,180 | 2018 | \$21,803 |
| 411 REGENT LN N | St. Petersburg | Planned Unit Development | \$1,113,087 | 2,180 | 2018 | \$21,803 |
| 405 REGENT LN N | St. Petersburg | Planned Unit Development | \$1,113,087 | 2,180 | 2018 | \$21,803 |
| 412 REGENT LN N | St. Petersburg | Planned Unit Development | \$1,113,087 | 2,180 | 2018 | \$21,803 |
| 429 REGENT LN N | St. Petersburg | Planned Unit Development | \$1,113,087 | 2,180 | 2018 | \$21,803 |
| 421 REGENT LN N | St. Petersburg | Planned Unit Development | \$1,113,087 | 2,180 | 2018 | \$21,803 |
| 432 REGENT LN N | St. Petersburg | Planned Unit Development | \$1,113,087 | 2,180 | 2018 | \$21,803 |

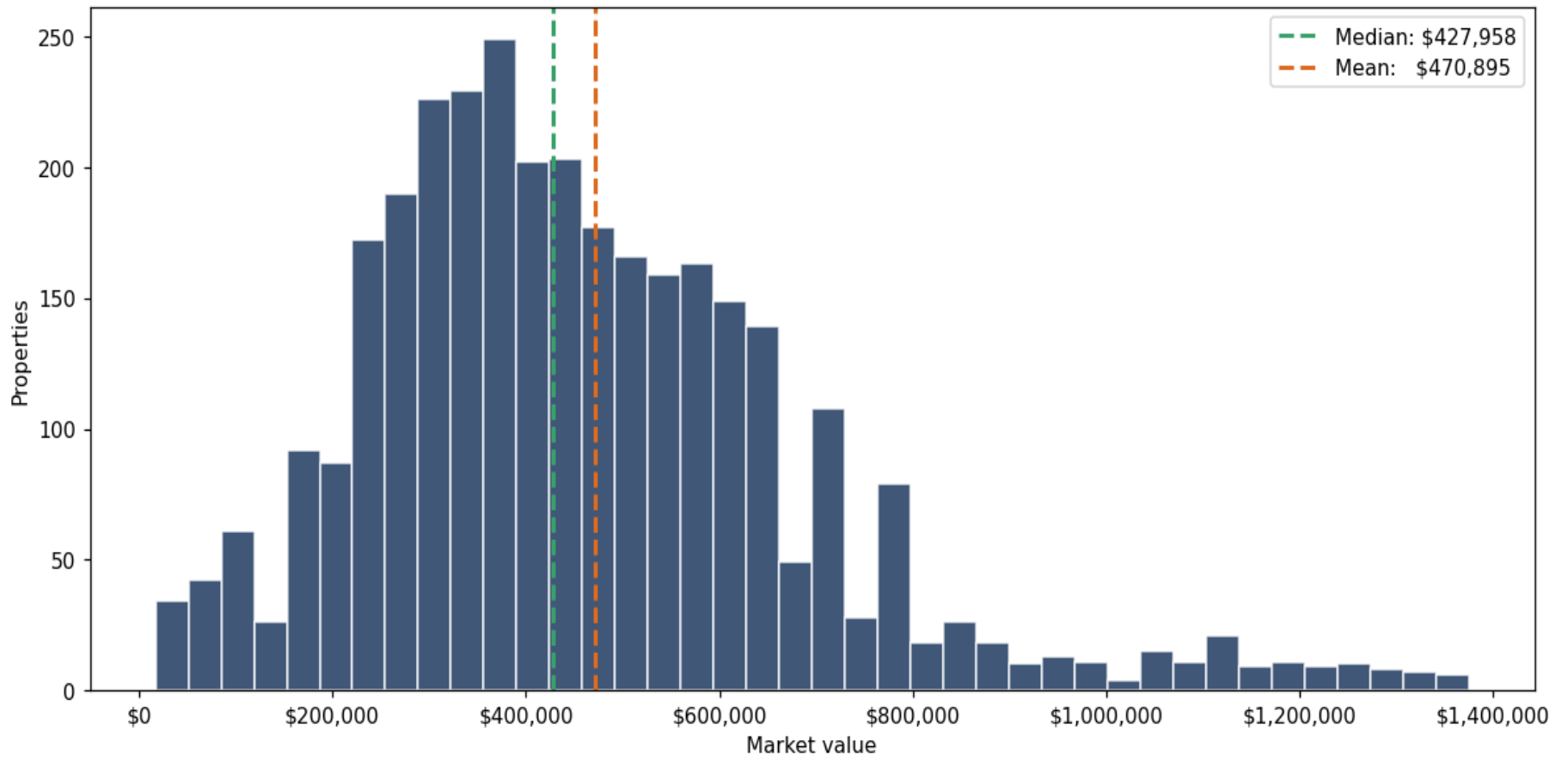
| Address | City | Type | Market Value | Sq Ft | Year | Annual Tax |
|------------------|----------------|--------------------------|--------------|-------|------|------------|
| 418 REGENT LN N | St. Petersburg | Planned Unit Development | \$1,113,087 | 2,180 | 2018 | \$21,803 |
| 420 REGENT LN N | St. Petersburg | Planned Unit Development | \$1,113,087 | 2,180 | 2018 | \$21,803 |
| 408 REGENT LN N | St. Petersburg | Planned Unit Development | \$1,113,087 | 2,180 | 2018 | \$21,803 |
| 428 REGENT LN N | St. Petersburg | Planned Unit Development | \$1,113,087 | 2,180 | 2018 | \$21,803 |
| 17 LINCOLN AVE S | St. Petersburg | Planned Unit Development | \$1,106,314 | 2,334 | 2006 | \$17,009 |
| 2 LINCOLN AVE S | St. Petersburg | Planned Unit Development | \$1,093,709 | 2,195 | 2006 | \$16,426 |
| 4 LINCOLN AVE S | St. Petersburg | Planned Unit Development | \$1,093,091 | 2,334 | 2006 | \$16,794 |
| 23 LINCOLN AVE S | St. Petersburg | Planned Unit Development | \$1,082,684 | 2,334 | 2006 | \$16,516 |
| 420 11TH AVE NE | St. Petersburg | Planned Unit Development | \$1,079,873 | 2,367 | 2017 | \$17,984 |
| 436 11TH AVE NE | St. Petersburg | Planned Unit Development | \$1,079,873 | 2,367 | 2017 | \$17,984 |
| 113 5TH AVE N | St. Petersburg | Planned Unit Development | \$1,074,793 | 2,376 | 2019 | \$19,732 |
| 125 5TH AVE N | St. Petersburg | Planned Unit Development | \$1,074,793 | 2,376 | 2019 | \$19,732 |
| 117 5TH AVE N | St. Petersburg | Planned Unit Development | \$1,074,793 | 2,376 | 2019 | \$19,732 |
| 105 5TH AVE N | St. Petersburg | Planned Unit Development | \$1,074,793 | 2,376 | 2019 | \$19,732 |
| 25 LINCOLN AVE S | St. Petersburg | Planned Unit Development | \$1,072,011 | 2,334 | 2006 | \$16,357 |
| 10 LINCOLN AVE S | St. Petersburg | Planned Unit Development | \$1,072,011 | 2,334 | 2006 | \$16,357 |
| 27 LINCOLN AVE S | St. Petersburg | Planned Unit Development | \$1,066,432 | 2,195 | 2006 | \$16,019 |
| 14 LINCOLN AVE S | St. Petersburg | Planned Unit Development | \$1,064,032 | 2,195 | 2006 | \$15,968 |
| 111 5TH AVE N | St. Petersburg | Planned Unit Development | \$1,053,915 | 2,376 | 2019 | \$19,341 |
| 107 5TH AVE N | St. Petersburg | Planned Unit Development | \$1,053,915 | 2,376 | 2019 | \$19,341 |
| 109 5TH AVE N | St. Petersburg | Planned Unit Development | \$1,053,915 | 2,376 | 2019 | \$19,341 |
| 119 5TH AVE N | St. Petersburg | Planned Unit Development | \$1,053,915 | 2,376 | 2019 | \$19,341 |
| 121 5TH AVE N | St. Petersburg | Planned Unit Development | \$1,053,915 | 2,376 | 2019 | \$19,341 |
| 123 5TH AVE N | St. Petersburg | Planned Unit Development | \$1,053,915 | 2,376 | 2019 | \$19,341 |
| 21 LINCOLN AVE S | St. Petersburg | Planned Unit Development | \$1,053,557 | 2,195 | 2006 | \$15,809 |

| Address | City | Type | Market Value | Sq Ft | Year | Annual Tax |
|-----------------------|----------------|--------------------------|--------------|-------|------|------------|
| 6 LINCOLN AVE S | St. Petersburg | Planned Unit Development | \$1,053,557 | 2,195 | 2006 | \$15,809 |
| 15 LINCOLN AVE S | St. Petersburg | Planned Unit Development | \$1,053,557 | 2,195 | 2006 | \$15,809 |
| 19 LINCOLN AVE S | St. Petersburg | Planned Unit Development | \$1,053,557 | 2,195 | 2006 | \$15,809 |
| 1064 PASEO DEL RIO NE | St. Petersburg | Planned Unit Development | \$1,045,772 | 3,607 | 2004 | \$18,880 |
| 428 11TH AVE NE | St. Petersburg | Planned Unit Development | \$1,037,236 | 2,251 | 2018 | \$17,253 |
| 1008 PASEO DEL RIO NE | St. Petersburg | Planned Unit Development | \$1,036,760 | 3,607 | 2005 | \$18,850 |
| 12 MANGROVE PT | St. Petersburg | Planned Unit Development | \$1,034,526 | 3,139 | 2006 | \$18,595 |
| 430 11TH AVE NE | St. Petersburg | Planned Unit Development | \$1,032,490 | 2,251 | 2017 | \$17,185 |
| 1815 5TH ST N | St. Petersburg | Planned Unit Development | \$1,026,669 | 2,529 | 2018 | \$19,954 |
| 101 FAREHAM PL N | St. Petersburg | Planned Unit Development | \$1,020,063 | 2,100 | 1998 | \$20,843 |
| 324 DELMAR TER S | St. Petersburg | Planned Unit Development | \$996,815 | 2,653 | 2016 | \$17,037 |
| 300 DELMAR TER S | St. Petersburg | Planned Unit Development | \$996,815 | 2,653 | 2016 | \$17,037 |
| 33 FRANKLIN CT S | St. Petersburg | Planned Unit Development | \$995,548 | 2,430 | 1996 | \$17,925 |
| 440 11TH AVE NE | St. Petersburg | Planned Unit Development | \$986,442 | 2,096 | 2017 | \$16,436 |
| 109 FAREHAM PL N | St. Petersburg | Planned Unit Development | \$984,634 | 2,100 | 1998 | \$20,114 |
| 306 DELMAR TER S | St. Petersburg | Planned Unit Development | \$977,233 | 2,653 | 2016 | \$16,698 |
| 318 DELMAR TER S | St. Petersburg | Planned Unit Development | \$977,233 | 2,653 | 2016 | \$16,698 |
| 312 DELMAR TER S | St. Petersburg | Planned Unit Development | \$977,233 | 2,653 | 2016 | \$16,698 |
| 31 FRANKLIN CT S | St. Petersburg | Planned Unit Development | \$974,918 | 2,075 | 1996 | \$17,137 |
| 416 11TH AVE NE | St. Petersburg | Planned Unit Development | \$972,833 | 2,064 | 2017 | \$16,197 |
| 7 CRESCENT PL S | St. Petersburg | Planned Unit Development | \$968,705 | 2,330 | 1994 | \$17,264 |
| 1044 PASEO DEL RIO NE | St. Petersburg | Planned Unit Development | \$966,292 | 3,607 | 2004 | \$17,825 |
| 1068 PASEO DEL RIO NE | St. Petersburg | Planned Unit Development | \$957,151 | 3,607 | 2006 | \$17,631 |
| 1823 5TH ST N | St. Petersburg | Planned Unit Development | \$957,131 | 2,545 | 2018 | \$18,933 |
| 105 FAREHAM PL N | St. Petersburg | Planned Unit Development | \$956,586 | 2,100 | 1999 | \$19,551 |

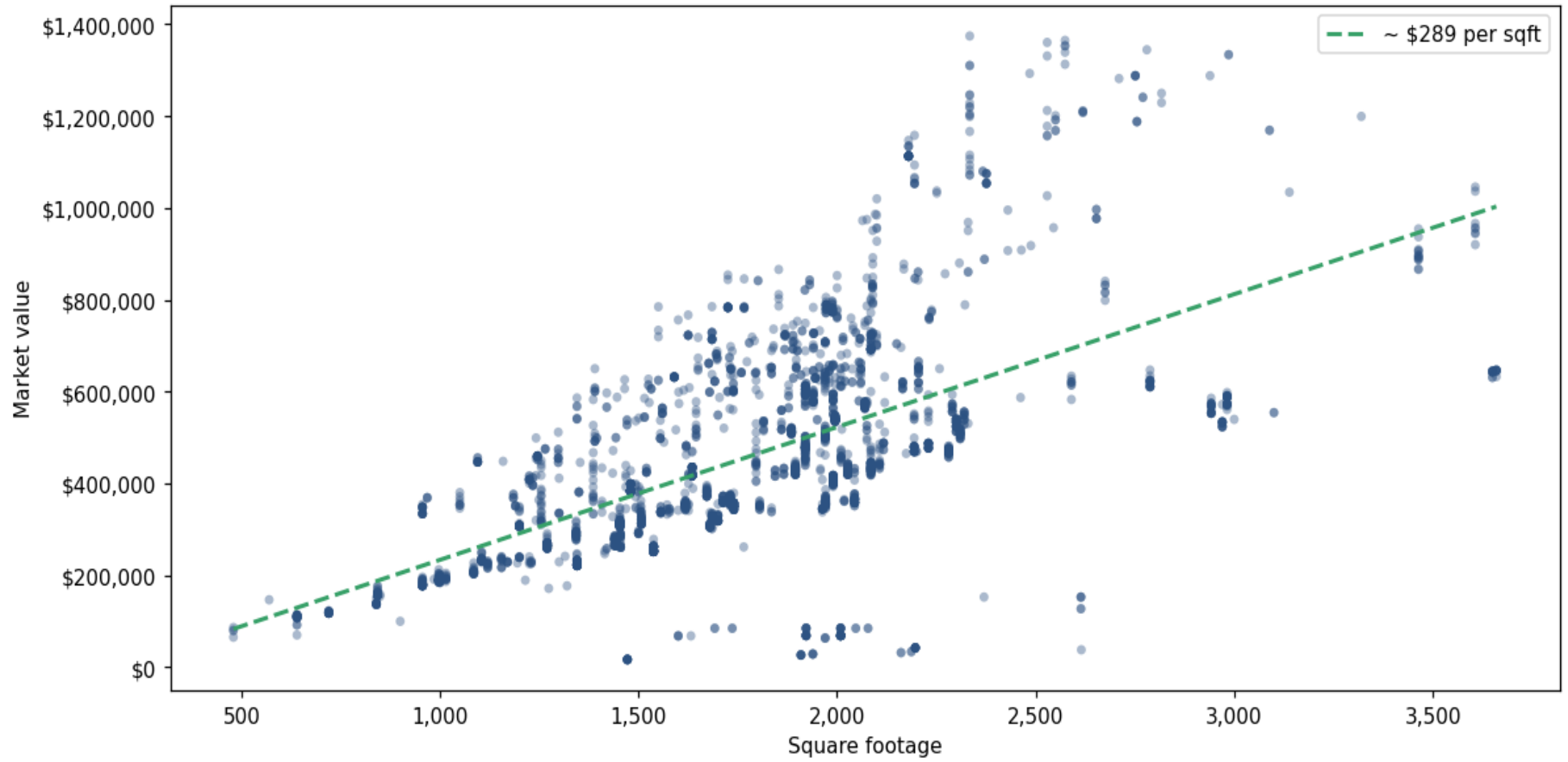
| Address | City | Type | Market Value | Sq Ft | Year | Annual Tax |
|-----------------------|----------------|--------------------------|--------------|-------|------|------------|
| 107 FAREHAM PL N | St. Petersburg | Planned Unit Development | \$955,848 | 2,100 | 1998 | \$19,525 |
| 1078 PASEO DEL RIO NE | St. Petersburg | Planned Unit Development | \$955,830 | 3,607 | 2006 | \$17,599 |
| 1074 PASEO DEL RIO NE | St. Petersburg | Planned Unit Development | \$954,562 | 3,464 | 2006 | \$17,571 |
| 34 FRANKLIN CT S | St. Petersburg | Planned Unit Development | \$951,215 | 2,090 | 1996 | \$16,714 |
| 19 JEFFERSON CT S | St. Petersburg | Planned Unit Development | \$950,940 | 2,330 | 1995 | \$16,914 |
| 1024 PASEO DEL RIO NE | St. Petersburg | Planned Unit Development | \$946,173 | 3,607 | 2005 | \$17,378 |
| 1040 PASEO DEL RIO NE | St. Petersburg | Planned Unit Development | \$944,133 | 3,607 | 2005 | \$17,335 |
| 1072 PASEO DEL RIO NE | St. Petersburg | Planned Unit Development | \$937,361 | 3,464 | 2006 | \$17,303 |
| 657 SAXONY BLVD | St. Petersburg | Planned Unit Development | \$936,211 | 4,610 | 2005 | \$18,016 |
| 103 FAREHAM PL N | St. Petersburg | Planned Unit Development | \$927,800 | 2,100 | 1999 | \$18,975 |
| 623 SAXONY BLVD | St. Petersburg | Planned Unit Development | \$925,804 | 4,610 | 2004 | \$17,871 |
| 649 SAXONY BLVD | St. Petersburg | Planned Unit Development | \$925,794 | 4,890 | 2005 | \$18,115 |
| 1022 PASEO DEL RIO NE | St. Petersburg | Planned Unit Development | \$920,294 | 3,607 | 2005 | \$16,884 |
| 1819 5TH ST N | St. Petersburg | Planned Unit Development | \$918,204 | 2,488 | 2018 | \$18,176 |
| 1016 PASEO DEL RIO NE | St. Petersburg | Planned Unit Development | \$909,551 | 3,464 | 2005 | \$16,726 |
| 362 6TH ST S | St. Petersburg | Planned Unit Development | \$908,562 | 2,464 | 2023 | \$17,521 |
| 28 CRESCENT PL S | St. Petersburg | Planned Unit Development | \$907,378 | 2,430 | 1996 | \$16,489 |
| 1052 PASEO DEL RIO NE | St. Petersburg | Planned Unit Development | \$907,316 | 3,464 | 2004 | \$16,682 |
| 1036 PASEO DEL RIO NE | St. Petersburg | Planned Unit Development | \$905,270 | 3,464 | 2005 | \$16,674 |
| 1048 PASEO DEL RIO NE | St. Petersburg | Planned Unit Development | \$898,094 | 3,464 | 2004 | \$16,495 |
| 1028 PASEO DEL RIO NE | St. Petersburg | Planned Unit Development | \$896,557 | 3,464 | 2005 | \$16,473 |
| 1056 PASEO DEL RIO NE | St. Petersburg | Planned Unit Development | \$893,835 | 3,464 | 2004 | \$16,412 |
| 1032 PASEO DEL RIO NE | St. Petersburg | Planned Unit Development | \$893,406 | 3,464 | 2005 | \$16,430 |
| 1 LINCOLN AVE S | St. Petersburg | Planned Unit Development | \$891,879 | 2,090 | 1996 | \$15,920 |
| 1026 PASEO DEL RIO NE | St. Petersburg | Planned Unit Development | \$890,180 | 3,464 | 2005 | \$16,367 |

| Address | City | Type | Market Value | Sq Ft | Year | Annual Tax |
|-----------------------|----------------|--------------------------|--------------|-------|------|------------|
| 1020 PASEO DEL RIO NE | St. Petersburg | Planned Unit Development | \$888,465 | 3,464 | 2005 | \$16,323 |
| 429 13TH AVE N | St. Petersburg | Planned Unit Development | \$888,359 | 2,371 | 2018 | \$20,398 |
| 435 13TH AVE N | St. Petersburg | Planned Unit Development | \$888,359 | 2,371 | 2018 | \$20,398 |
| 1060 PASEO DEL RIO NE | St. Petersburg | Planned Unit Development | \$887,190 | 3,464 | 2004 | \$16,287 |
| 1907 5TH ST N | St. Petersburg | Planned Unit Development | \$880,167 | 2,308 | 2004 | \$17,086 |
| 3 JEFFERSON CT S | St. Petersburg | Planned Unit Development | \$878,076 | 2,090 | 1995 | \$15,731 |
| 905 ARLINGTON AVE N | St. Petersburg | Planned Unit Development | \$877,832 | 2,168 | 2023 | \$17,106 |
| 659 SAXONY BLVD | St. Petersburg | Planned Unit Development | \$873,389 | 4,610 | 2005 | \$17,074 |
| 1076 PASEO DEL RIO NE | St. Petersburg | Planned Unit Development | \$867,656 | 3,464 | 2006 | \$15,910 |
| 965 ARLINGTON AVE N | St. Petersburg | Planned Unit Development | \$867,164 | 2,168 | 2021 | \$16,908 |
| 323 4TH AVE N | St. Petersburg | Planned Unit Development | \$866,217 | 1,853 | 2002 | \$15,874 |
| 1012 PASEO DEL RIO NE | St. Petersburg | Planned Unit Development | \$866,187 | 3,464 | 2005 | \$15,883 |

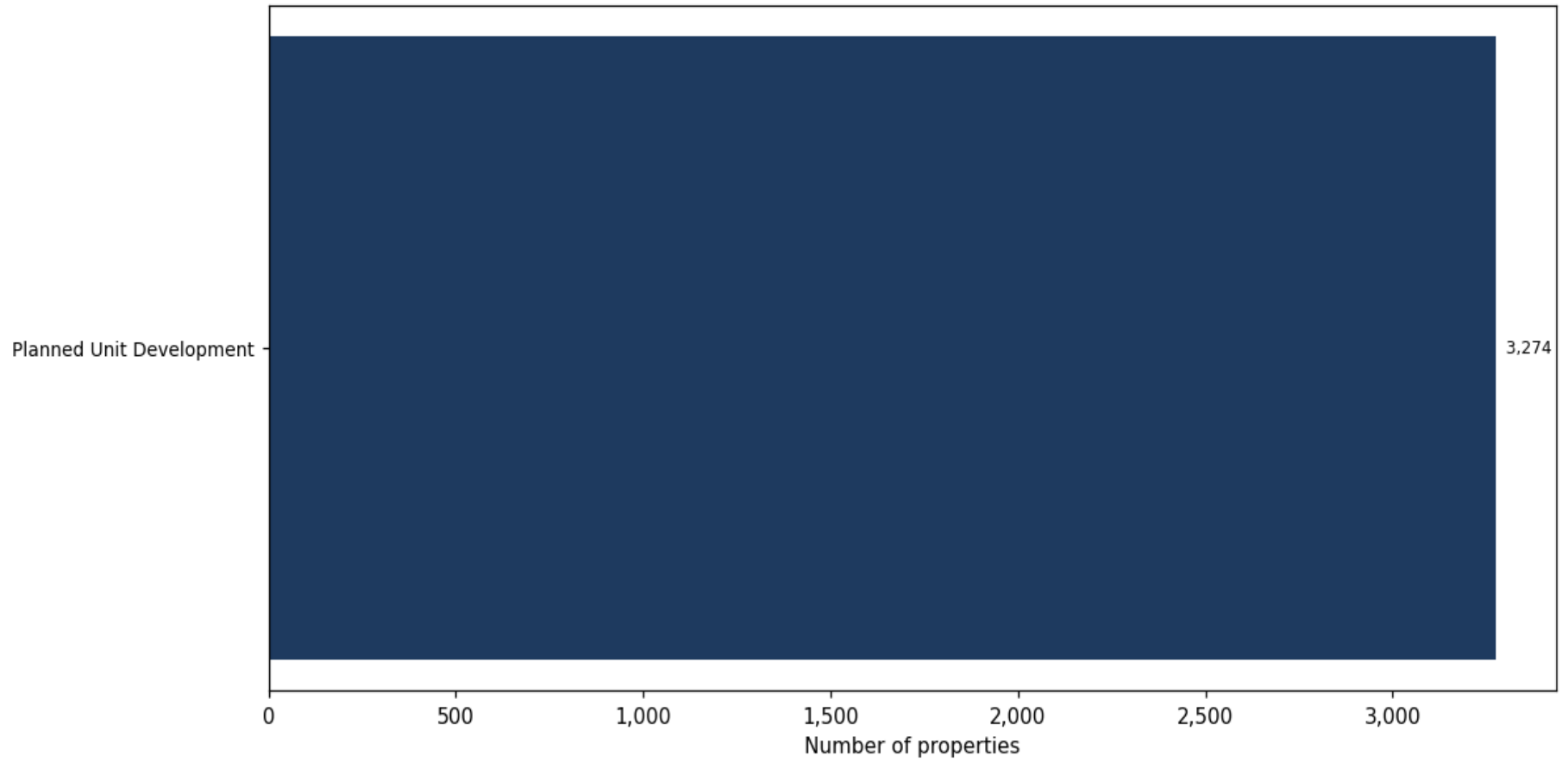
Market value distribution (n=3,270, top 1% trimmed for readability)



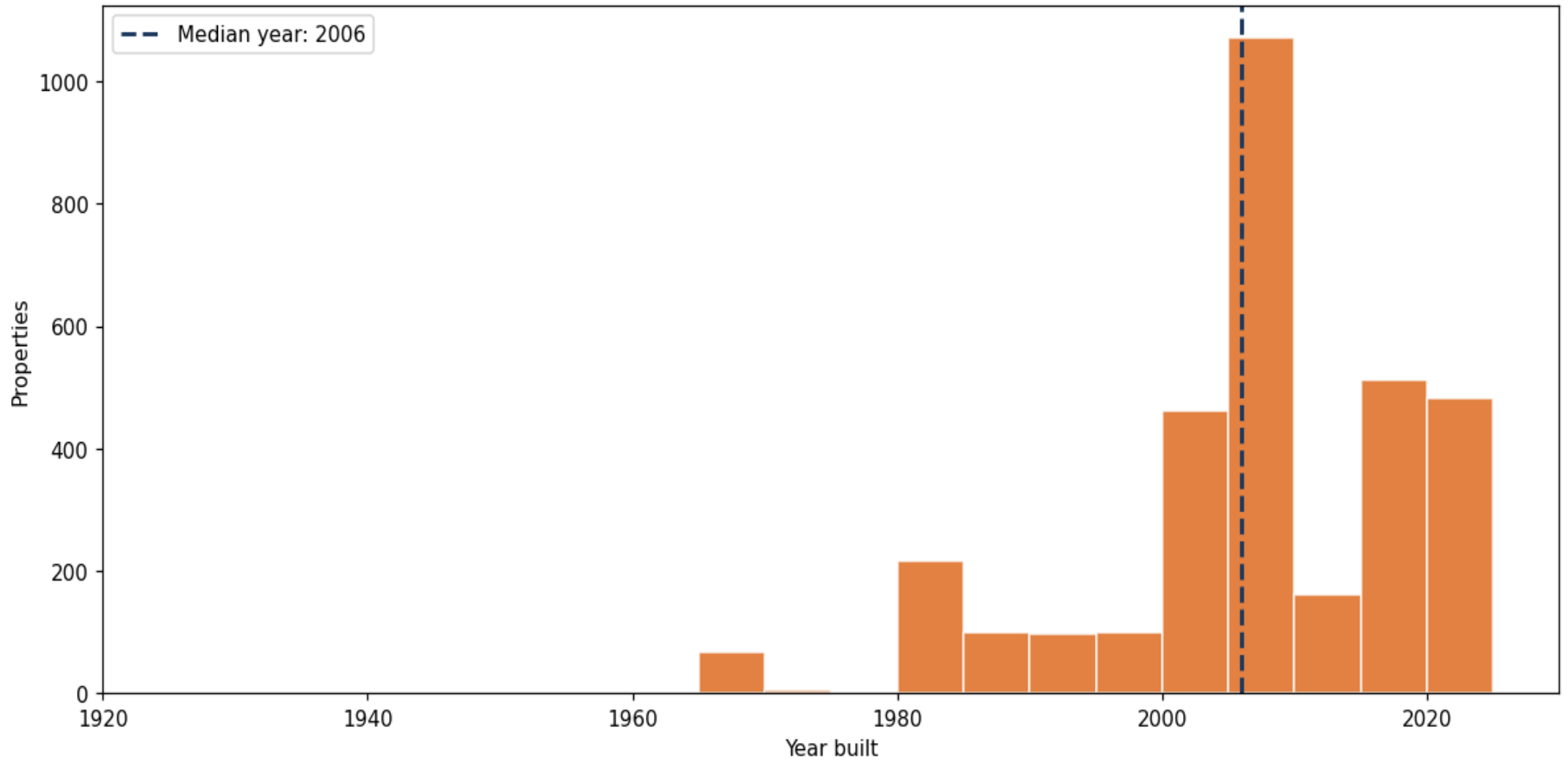
Building size vs. market value (n=3,207, outliers trimmed)



Top property types by count



Year built distribution (5-year buckets)



Market value vs. assessed value (gap = untaxed appreciation)

