

# Pinellas Property Market Report

84 matching properties • May 30, 2026

Filters applied	Headline numbers
<b>City:</b> St. Petersburg	<b>Properties matched:</b> 84
<b>Property type:</b> Non-Profit Charitable Services	<b>Median market value:</b> \$1,377,978
	<b>Mean market value:</b> \$2,927,543
	<b>Min / Max:</b> \$193,398 / \$33,663,483
	<b>Mean square footage:</b> 19,121

## Top 84 properties by market value

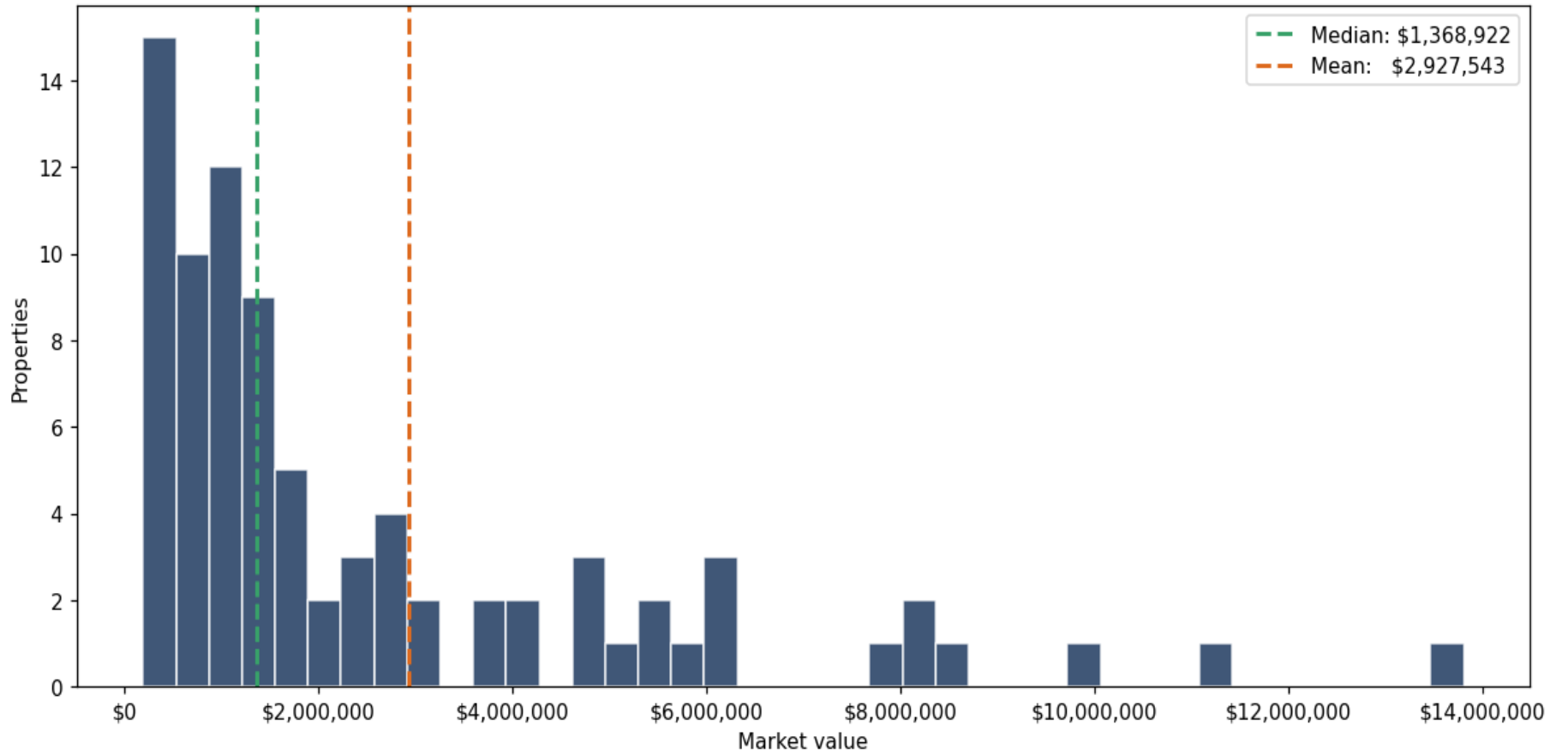
Address	City	Type	Market Value	Sq Ft	Year	Annual Tax
1021 5TH AVE N	St. Petersburg	Non-Profit Charitable Se	\$33,663,483	106,573		\$687,222
5885 66TH ST N	St. Petersburg	Non-Profit Charitable Se	\$13,810,140	104,772	1977	\$292,364
880 6TH ST S	St. Petersburg	Non-Profit Charitable Se	\$11,359,494	71,264	1990	\$230,007
3200 1ST AVE S	St. Petersburg	Non-Profit Charitable Se	\$9,997,479	54,000	2001	\$186,585
3050 1ST AVE S	St. Petersburg	Non-Profit Charitable Se	\$8,625,536	35,123	2006	\$159,974
3095 76TH WAY N	St. Petersburg	Non-Profit Charitable Se	\$8,320,643	71,913	1968	\$163,876
550 9TH AVE S	St. Petersburg	Non-Profit Charitable Se	\$8,311,386	65,739	1964	\$167,460
1400 4TH ST S	St. Petersburg	Non-Profit Charitable Se	\$8,000,057	38,705	1993	\$160,631
2473 58TH AVE N	St. Petersburg	Non-Profit Charitable Se	\$6,184,407	39,613	2015	\$119,389
10596 GANDY BLVD N	St. Petersburg	Non-Profit Charitable Se	\$6,000,000	161,314	1967	\$102,681
500 7TH AVE S	St. Petersburg	Non-Profit Charitable Se	\$6,000,000	55,326	1960	\$123,004
6720 54TH AVE N	St. Petersburg	Non-Profit Charitable Se	\$5,867,815	32,623	1994	\$135,540
401 15TH ST N	St. Petersburg	Non-Profit Charitable Se	\$5,415,167	41,352	1920	\$105,298

Address	City	Type	Market Value	Sq Ft	Year	Annual Tax
1735 DR MARTIN LUTHER KING JR ST	St. Petersburg	Non-Profit Charitable Se	\$5,303,006	62,892	1968	\$108,001
6801 38TH AVE N	St. Petersburg	Non-Profit Charitable Se	\$5,033,159	33,950	1956	\$100,328
3868 9TH AVE N	St. Petersburg	Non-Profit Charitable Se	\$4,940,105	22,529	1960	\$100,675
460 8TH AVE S	St. Petersburg	Non-Profit Charitable Se	\$4,707,942	2,250	1955	\$101,129
9900 DR MARTIN LUTHER KING JR ST	St. Petersburg	Non-Profit Charitable Se	\$4,650,000	28,274	1981	\$95,615
445 31ST ST N	St. Petersburg	Non-Profit Charitable Se	\$4,152,685	27,975	1969	\$84,009
812 4TH AVE N	St. Petersburg	Non-Profit Charitable Se	\$4,119,582	20,252	2016	\$75,792
3950 9TH AVE N	St. Petersburg	Non-Profit Charitable Se	\$3,853,899	14,174	2001	\$83,137
1011 1ST AVE N	St. Petersburg	Non-Profit Charitable Se	\$3,817,619	17,028	1961	\$76,048
863 3RD AVE N	St. Petersburg	Non-Profit Charitable Se	\$3,230,215	20,214	1927	\$59,163
777 4TH ST S	St. Petersburg	Non-Profit Charitable Se	\$2,957,851	16,974	1975	\$55,903
800 11TH ST N	St. Petersburg	Non-Profit Charitable Se	\$2,880,755	15,990	2001	\$54,365
5321 4TH ST N	St. Petersburg	Non-Profit Charitable Se	\$2,763,860	11,920	1982	\$57,369
1055 28TH ST S	St. Petersburg	Non-Profit Charitable Se	\$2,648,190	10,492	2019	\$48,260
2335 22ND AVE S	St. Petersburg	Non-Profit Charitable Se	\$2,635,711	23,281	1950	\$55,594
4024 CENTRAL AVE	St. Petersburg	Non-Profit Charitable Se	\$2,467,893	20,182	1924	\$48,145
818 4TH ST N	St. Petersburg	Non-Profit Charitable Se	\$2,437,349	8,316	1959	\$46,045
11207 BLUE HERON BLVD N	St. Petersburg	Non-Profit Charitable Se	\$2,415,054	19,700	1997	\$44,269
647 34TH AVE S	St. Petersburg	Non-Profit Charitable Se	\$2,220,365	15,021	1925	\$45,090
701 5TH AVE N	St. Petersburg	Non-Profit Charitable Se	\$2,123,882	9,320	1991	\$44,201
2301 3RD AVE S	St. Petersburg	Non-Profit Charitable Se	\$1,682,344	23,390	1965	\$34,859
559 10TH ST N	St. Petersburg	Non-Profit Charitable Se	\$1,665,895	8,368	2001	\$32,815
550 16TH ST N	St. Petersburg	Non-Profit Charitable Se	\$1,663,353	20,775	1949	\$31,228
1332 7TH AVE N	St. Petersburg	Non-Profit Charitable Se	\$1,625,000	7,126	2010	\$33,366
401 9TH AVE S	St. Petersburg	Non-Profit Charitable Se	\$1,615,922	11,000	1985	\$33,454

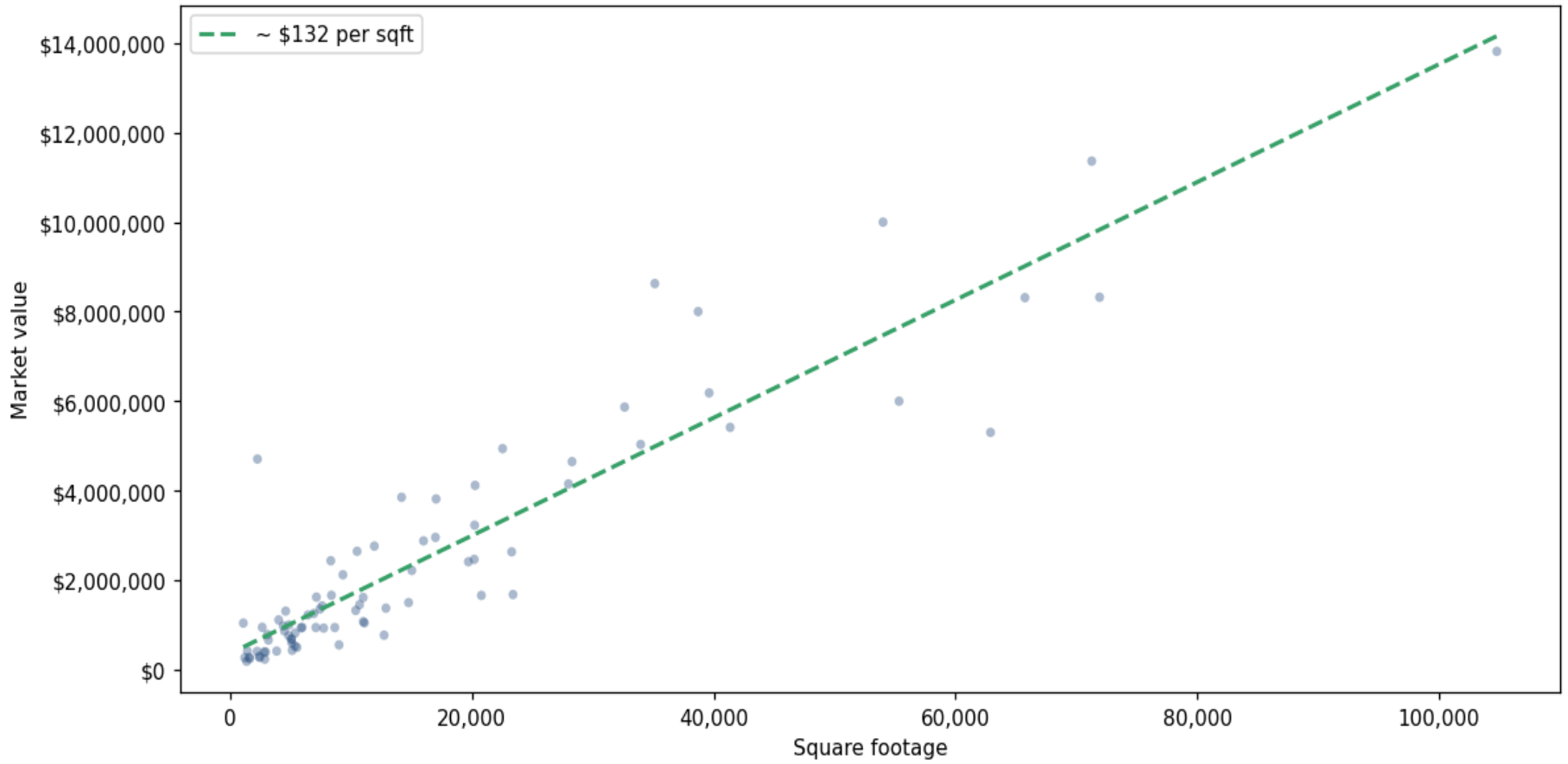
Address	City	Type	Market Value	Sq Ft	Year	Annual Tax
2510 CENTRAL AVE	St. Petersburg	Non-Profit Charitable Se	\$1,503,312	14,754	1925	\$29,203
333 31ST ST N	St. Petersburg	Non-Profit Charitable Se	\$1,455,866	10,696	1966	\$29,205
3800 CENTRAL AVE	St. Petersburg	Non-Profit Charitable Se	\$1,429,586	7,600	1966	\$28,148
701 4TH ST S	St. Petersburg	Non-Profit Charitable Se	\$1,377,978	12,878	1950	\$25,830
4010 CENTRAL AVE	St. Petersburg	Non-Profit Charitable Se	\$1,359,867	7,424	1998	\$26,490
1801 5TH AVE N	St. Petersburg	Non-Profit Charitable Se	\$1,326,645	10,380	1957	\$27,743
1600 DR MARTIN LUTHER KING JR ST	St. Petersburg	Non-Profit Charitable Se	\$1,311,959	4,585	2003	\$24,701
3055 76TH WAY N	St. Petersburg	Non-Profit Charitable Se	\$1,259,801	6,913	1986	\$25,533
4950 34TH ST N	St. Petersburg	Non-Profit Charitable Se	\$1,224,913	6,424	1969	\$26,515
5353 31ST ST N	St. Petersburg	Non-Profit Charitable Se	\$1,115,428	4,004	1991	\$22,004
5825 66TH ST N	St. Petersburg	Non-Profit Charitable Se	\$1,077,059	11,002	1982	\$24,983
3015 46TH AVE N	St. Petersburg	Non-Profit Charitable Se	\$1,050,000	11,100	1960	\$22,842
2880 CENTRAL AVE	St. Petersburg	Non-Profit Charitable Se	\$1,045,000	1,080	1964	\$21,513
4526 78TH LN N	St. Petersburg	Non-Profit Charitable Se	\$1,005,192	4,858	1941	\$19,475
3201 66TH ST N	St. Petersburg	Non-Profit Charitable Se	\$980,815	4,385	1987	\$18,253
6475 58TH AVE N	St. Petersburg	Non-Profit Charitable Se	\$950,952	2,642	1979	\$20,149
1001 16TH ST S	St. Petersburg	Non-Profit Charitable Se	\$947,894	5,956	1957	\$20,170
815 7TH AVE S	St. Petersburg	Non-Profit Charitable Se	\$946,098	7,080	1961	\$18,988
180 34TH ST N	St. Petersburg	Non-Profit Charitable Se	\$945,840	8,648	1969	\$17,857
384 15TH ST N	St. Petersburg	Non-Profit Charitable Se	\$941,499	5,851	1954	\$18,323
1763 9TH AVE N	St. Petersburg	Non-Profit Charitable Se	\$933,471	7,727	1948	\$18,238
3110 75TH ST N	St. Petersburg	Non-Profit Charitable Se	\$870,114	4,480	1991	\$17,533
900 5TH ST S	St. Petersburg	Non-Profit Charitable Se	\$821,760	5,366	1959	\$15,431
480 7TH AVE S	St. Petersburg	Non-Profit Charitable Se	\$789,407	3,080	1990	\$14,790
3115 44TH AVE N	St. Petersburg	Non-Profit Charitable Se	\$775,000	12,725		\$16,842

Address	City	Type	Market Value	Sq Ft	Year	Annual Tax
1900 DR MARTIN LUTHER KING JR ST	St. Petersburg	Non-Profit Charitable Se	\$762,442	4,837	1960	\$13,982
330 49TH ST S	St. Petersburg	Non-Profit Charitable Se	\$695,000	5,076	1985	\$14,342
800 11TH ST N	St. Petersburg	Non-Profit Charitable Se	\$678,540	5,056	2001	\$12,485
1050 BURLINGTON AVE N	St. Petersburg	Non-Profit Charitable Se	\$665,837	3,158	1930	\$12,261
4123 37TH ST N	St. Petersburg	Non-Profit Charitable Se	\$600,000	5,088	1994	\$13,053
1245 18TH AVE S	St. Petersburg	Non-Profit Charitable Se	\$557,553	9,000	1948	\$10,574
3000 16TH ST N	St. Petersburg	Non-Profit Charitable Se	\$528,782	5,353	1947	\$10,387
1001 4TH ST S	St. Petersburg	Non-Profit Charitable Se	\$504,362	5,522	1949	\$10,269
2911 47TH AVE N	St. Petersburg	Non-Profit Charitable Se	\$437,341	5,120	1964	\$9,610
440 10TH AVE S	St. Petersburg	Non-Profit Charitable Se	\$421,619	1,420	1995	\$8,547
1700 34TH ST S	St. Petersburg	Non-Profit Charitable Se	\$420,000	3,840	1959	\$8,466
4948 CENTRAL AVE	St. Petersburg	Non-Profit Charitable Se	\$412,925	2,220	1952	\$9,312
1327 DR MARTIN LUTHER KING JR ST	St. Petersburg	Non-Profit Charitable Se	\$401,537	2,804	1955	\$7,456
612 DR MARTIN LUTHER KING JR ST	St. Petersburg	Non-Profit Charitable Se	\$399,564	2,924	1926	\$7,537
750 22ND AVE S	St. Petersburg	Non-Profit Charitable Se	\$300,000	2,388	1958	\$6,185
3545 5TH AVE	St. Petersburg	Non-Profit Charitable Se	\$280,173	1,569	1940	\$5,922
3537 5TH AVE N	St. Petersburg	Non-Profit Charitable Se	\$278,195	2,452	1952	\$5,706
1246 16TH ST N	St. Petersburg	Non-Profit Charitable Se	\$272,030	1,196	1954	\$5,595
3638 1ST AVE N	St. Petersburg	Non-Profit Charitable Se	\$251,612	1,608	1948	\$5,228
620 32ND AVE S	St. Petersburg	Non-Profit Charitable Se	\$240,000	2,856	1942	\$4,980
940 22ND AVE S	St. Petersburg	Non-Profit Charitable Se	\$193,398	1,352	1947	\$3,977

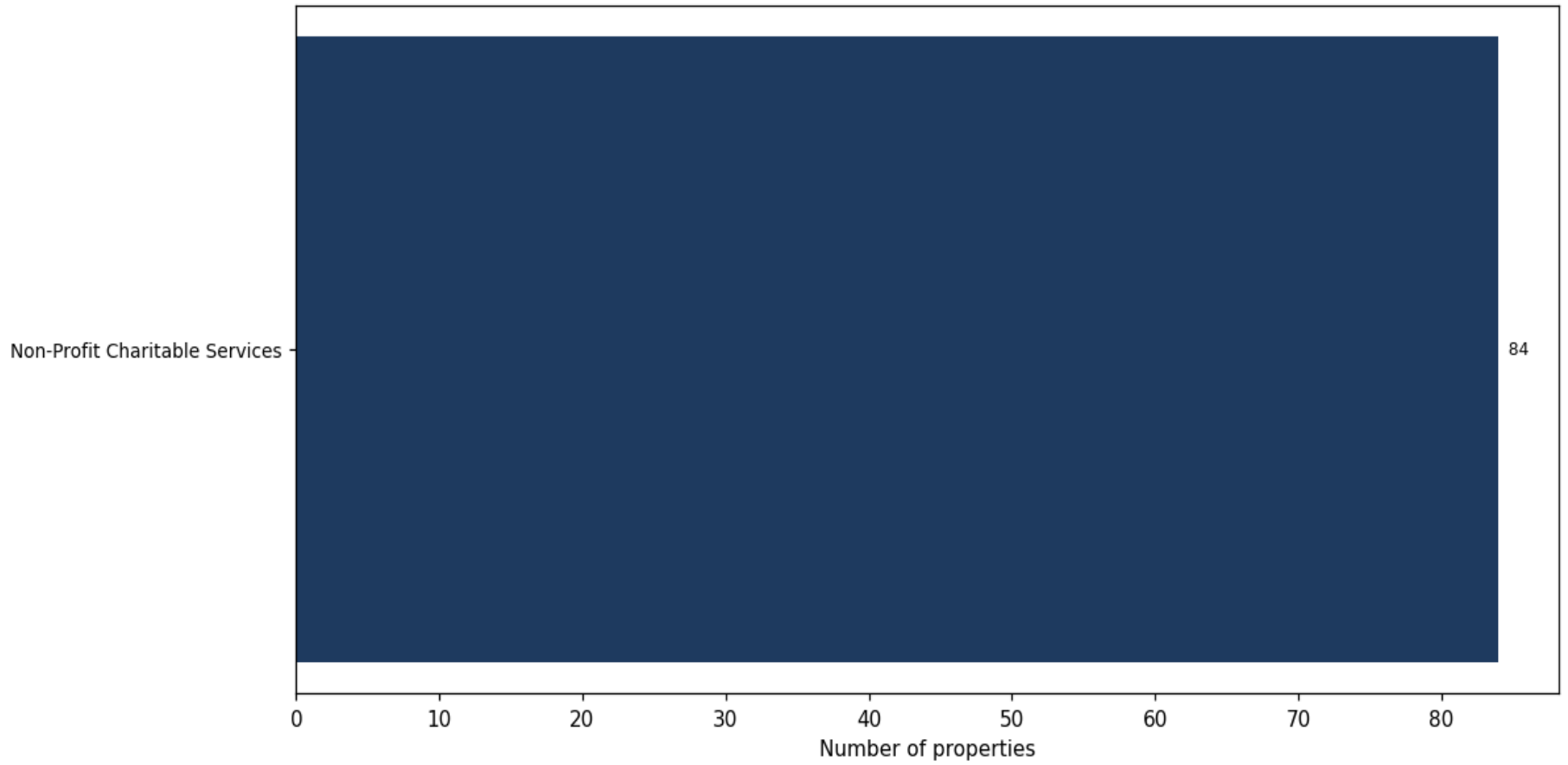
**Market value distribution (n=84, top 1% trimmed for readability)**



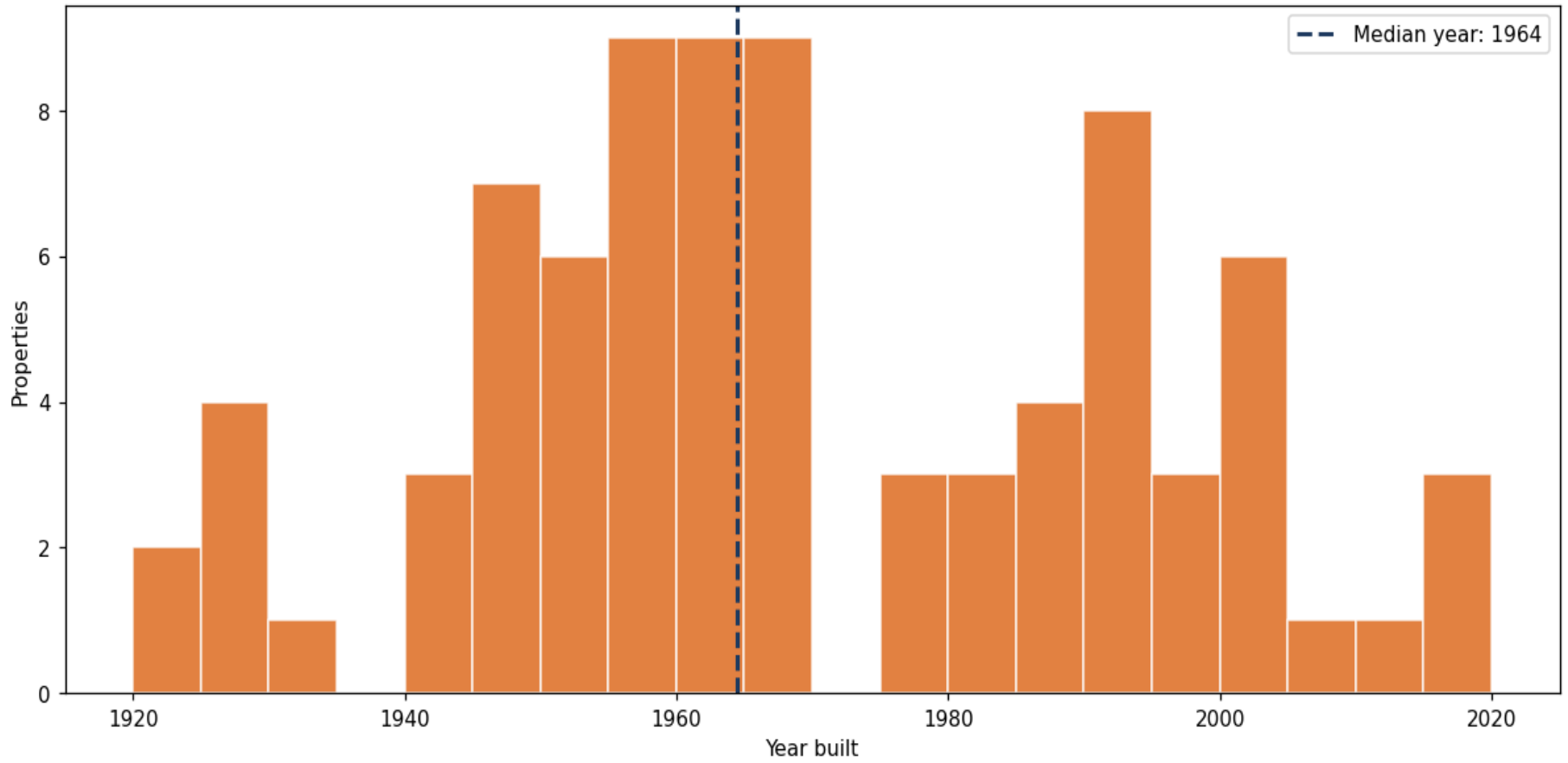
**Building size vs. market value (n=82, outliers trimmed)**



### Top property types by count



**Year built distribution (5-year buckets)**



**Market value vs. assessed value (gap = untaxed appreciation)**

