

Pinellas Property Market Report

527 matching properties • May 30, 2026

Filters applied	Headline numbers
City: St. Petersburg	Properties matched: 527
Property type: General Warehouse	Median market value: \$480,000
	Mean market value: \$696,728
	Min / Max: \$101,000 / \$8,280,000
	Mean square footage: 8,209

Top 200 properties by market value

Address	City	Type	Market Value	Sq Ft	Year	Annual Tax
12003 28TH ST N	St. Petersburg	General Warehouse	—			—
12003 28TH ST N	St. Petersburg	General Warehouse	—			—
12003 28TH ST N	St. Petersburg	General Warehouse	—	37,838	1985	—
9700 18TH ST N	St. Petersburg	General Warehouse	\$8,280,000	94,569	1998	\$166,489
2400 118TH AVE N	St. Petersburg	General Warehouse	\$7,650,000	124,684	1987	\$178,779
9700 INTERNATIONAL CT N	St. Petersburg	General Warehouse	\$5,035,000	60,500	1987	\$104,578
1790 COMMERCE AVE N	St. Petersburg	General Warehouse	\$4,575,000	45,854	2003	\$96,411
222 22ND ST S	St. Petersburg	General Warehouse	\$3,730,000	38,273	1976	\$77,687
1133 BAUM AVE N	St. Petersburg	General Warehouse	\$3,526,600	5,777	1925	\$70,416
2650 GANDY BLVD N	St. Petersburg	General Warehouse	\$3,000,000	58,820	1981	\$67,149
2401 72ND ST N	St. Petersburg	General Warehouse	\$2,860,000	52,152	1964	\$57,767
255 10TH ST N	St. Petersburg	General Warehouse	\$2,850,000	28,750	1945	\$58,166
4301 31ST ST N	St. Petersburg	General Warehouse	\$2,800,000	20,640	1968	\$59,158

Address	City	Type	Market Value	Sq Ft	Year	Annual Tax
1320 BURLINGTON AVE N	St. Petersburg	General Warehouse	\$2,775,000	20,125	1963	\$55,781
515 22ND ST S	St. Petersburg	General Warehouse	\$2,635,000	43,579	1930	\$55,078
9911 16TH ST N	St. Petersburg	General Warehouse	\$2,625,000	29,375	2000	\$59,361
2700 25TH ST N	St. Petersburg	General Warehouse	\$2,564,000	31,752	2004	\$53,484
12105 28TH ST N	St. Petersburg	General Warehouse	\$2,435,000	20,572	1985	\$50,098
2230 31ST ST S	St. Petersburg	General Warehouse	\$2,385,000	40,000	1988	\$50,138
1190 20TH ST N	St. Petersburg	General Warehouse	\$2,315,000	37,895	1991	\$47,907
4033 35TH ST N	St. Petersburg	General Warehouse	\$2,300,000	36,350	1985	\$49,002
4241 31ST ST N	St. Petersburg	General Warehouse	\$2,285,000	44,022	1969	\$50,421
2440 30TH AVE N	St. Petersburg	General Warehouse	\$2,240,000	32,924	1959	\$47,250
661 40TH ST S	St. Petersburg	General Warehouse	\$2,135,000	41,952	1956	\$45,467
2201 72ND ST N	St. Petersburg	General Warehouse	\$1,990,000	27,783	1962	\$42,130
1499 BEACH DR SE	St. Petersburg	General Warehouse	\$1,968,000	24,500	1959	\$46,811
1765 COMMERCE AVE N	St. Petersburg	General Warehouse	\$1,925,000	22,614	1986	\$41,831
1955 3RD AVE S	St. Petersburg	General Warehouse	\$1,875,000	20,043	1956	\$38,843
3430 FAIRFIELD AVE S	St. Petersburg	General Warehouse	\$1,780,000	27,995	1947	\$37,708
2138 28TH ST N	St. Petersburg	General Warehouse	\$1,762,000	28,805	1954	\$38,843
1911 5TH AVE S	St. Petersburg	General Warehouse	\$1,690,000	36,150	1924	\$36,559
4200 31ST ST N	St. Petersburg	General Warehouse	\$1,625,000	42,225	2025	\$94,527
2300 31ST ST N	St. Petersburg	General Warehouse	\$1,612,000	22,304	1969	\$33,784
2600 22ND ST N	St. Petersburg	General Warehouse	\$1,520,000	22,217	1954	\$30,848
5601 HAINES RD N	St. Petersburg	General Warehouse	\$1,518,000	27,032	1972	\$35,748
7181 30TH AVE N	St. Petersburg	General Warehouse	\$1,505,000	23,680	1962	\$30,684
1120 1ST AVE N	St. Petersburg	General Warehouse	\$1,500,000	5,432	1963	\$31,533
2560 27TH AVE N	St. Petersburg	General Warehouse	\$1,500,000	12,064	2022	\$29,979

Address	City	Type	Market Value	Sq Ft	Year	Annual Tax
645 23RD ST S	St. Petersburg	General Warehouse	\$1,500,000	8,880	2021	\$29,979
1344 20TH ST N	St. Petersburg	General Warehouse	\$1,495,000	20,680	1972	\$31,315
3201 39TH AVE N	St. Petersburg	General Warehouse	\$1,478,000	22,040	1976	\$29,680
230 19TH ST S	St. Petersburg	General Warehouse	\$1,460,000	16,694	1953	\$30,079
2700 23RD ST N	St. Petersburg	General Warehouse	\$1,440,000	25,878	1952	\$30,537
12105 28TH ST N	St. Petersburg	General Warehouse	\$1,425,000	14,972	1985	\$29,083
1942 2ND AVE S	St. Petersburg	General Warehouse	\$1,425,000	15,915	1955	\$29,441
3035 22ND AVE N	St. Petersburg	General Warehouse	\$1,407,000	15,040	1962	\$28,465
3291 40TH AVE N	St. Petersburg	General Warehouse	\$1,395,000	18,125	2003	\$30,106
1510 1ST AVE N	St. Petersburg	General Warehouse	\$1,385,000	4,520	1949	\$30,477
2125 1ST AVE S	St. Petersburg	General Warehouse	\$1,375,000	15,468	1935	\$28,684
2575 28TH AVE N	St. Petersburg	General Warehouse	\$1,372,000	26,000	1952	\$29,581
3247 TECH DR N	St. Petersburg	General Warehouse	\$1,350,000	14,600	1978	\$26,153
3193 TECH DR N	St. Petersburg	General Warehouse	\$1,350,000	14,600	1978	\$26,153
2460 22ND AVE N	St. Petersburg	General Warehouse	\$1,348,000	14,790	1960	\$28,595
2625 75TH ST N	St. Petersburg	General Warehouse	\$1,330,000	20,000	1976	\$28,684
400 23RD ST S	St. Petersburg	General Warehouse	\$1,300,000	10,410		\$26,951
925 18TH ST N	St. Petersburg	General Warehouse	\$1,300,000	14,978	1950	\$26,653
1601 22ND ST N	St. Petersburg	General Warehouse	\$1,292,000	16,980	1999	\$27,190
2901 44TH AVE N	St. Petersburg	General Warehouse	\$1,285,000	16,900	1965	\$24,190
2135 5TH AVE S	St. Petersburg	General Warehouse	\$1,282,000	16,294	1986	\$27,410
1167 34TH ST S	St. Petersburg	General Warehouse	\$1,275,000	21,676	1971	\$25,663
4001 35TH ST N	St. Petersburg	General Warehouse	\$1,254,000	24,541	1955	\$28,983
230 21ST ST S	St. Petersburg	General Warehouse	\$1,248,000	8,000	2003	\$24,900
1921 5TH AVE S	St. Petersburg	General Warehouse	\$1,245,000	20,577	1976	\$27,788

Address	City	Type	Market Value	Sq Ft	Year	Annual Tax
5957 CARRIER ST N	St. Petersburg	General Warehouse	\$1,225,000	16,648	1958	\$31,171
7700 38TH AVE N	St. Petersburg	General Warehouse	\$1,195,000	18,750	1988	\$25,258
128 19TH ST S	St. Petersburg	General Warehouse	\$1,175,000	12,050	1952	\$24,308
2905 47TH AVE N	St. Petersburg	General Warehouse	\$1,170,000	15,810	1967	\$25,053
3101 44TH AVE N	St. Petersburg	General Warehouse	\$1,160,000	10,240	1965	\$25,263
3230 44TH AVE N	St. Petersburg	General Warehouse	\$1,155,000	12,995	1965	\$24,421
4685 95TH ST N	St. Petersburg	General Warehouse	\$1,150,000	19,444	1954	\$21,870
6777 HAINES RD	St. Petersburg	General Warehouse	\$1,140,000	19,400	1981	\$28,363
2400 22ND AVE N	St. Petersburg	General Warehouse	\$1,119,000	12,300	1960	\$23,784
2901 ANVIL ST N	St. Petersburg	General Warehouse	\$1,117,000	15,456	1966	\$23,406
307 16TH ST N	St. Petersburg	General Warehouse	\$1,115,000	6,500	2017	\$23,167
1936 1ST AVE S	St. Petersburg	General Warehouse	\$1,112,000	4,050	1954	\$22,310
4705 95TH ST N	St. Petersburg	General Warehouse	\$1,100,000	21,400	1969	\$21,423
2335 5TH AVE S	St. Petersburg	General Warehouse	\$1,100,000	9,061	1991	\$24,561
4803 95TH ST N	St. Petersburg	General Warehouse	\$1,100,000	16,965	2001	\$20,531
323 23RD ST S	St. Petersburg	General Warehouse	\$1,095,000	10,000	1965	\$23,545
3201 44TH AVE N	St. Petersburg	General Warehouse	\$1,092,000	8,848	1972	\$23,242
2552 20TH AVE N	St. Petersburg	General Warehouse	\$1,078,000	10,188	1957	\$21,912
2963 44TH AVE N	St. Petersburg	General Warehouse	\$1,072,000	14,000	1969	\$22,948
2342 EMERSON AVE S	St. Petersburg	General Warehouse	\$1,060,000	7,812	1956	\$21,712
910 5TH AVE N	St. Petersburg	General Warehouse	\$1,060,000	14,270	1920	\$23,904
2616 EMERSON AVE S	St. Petersburg	General Warehouse	\$1,055,000	9,710	1978	\$22,848
2979 46TH AVE N	St. Petersburg	General Warehouse	\$1,047,000	13,680	1960	\$23,474
2748 24TH ST N	St. Petersburg	General Warehouse	\$1,042,000	17,796	1959	\$21,712
269 16TH ST N	St. Petersburg	General Warehouse	\$1,035,000	16,632	1946	\$23,804

Address	City	Type	Market Value	Sq Ft	Year	Annual Tax
4500 28TH ST N	St. Petersburg	General Warehouse	\$1,020,000	12,000	1970	\$23,263
10395 GANDY BLVD N	St. Petersburg	General Warehouse	\$1,015,000	10,484	1960	\$17,675
2719 EMERSON AVE	St. Petersburg	General Warehouse	\$1,013,000	2,400	2009	\$20,716
3050 SCHERER DR N # A	St. Petersburg	General Warehouse	\$1,010,000	8,480	1982	\$19,087
615 27TH ST S	St. Petersburg	General Warehouse	\$990,000	8,080	1950	\$20,567
415 20TH ST S	St. Petersburg	General Warehouse	\$980,000	4,000	1965	\$19,561
1701 4TH ST N	St. Petersburg	General Warehouse	\$975,000	12,600	1945	\$20,119
3300 28TH ST N	St. Petersburg	General Warehouse	\$960,000	16,140	1964	\$20,418
2700 22ND ST N	St. Petersburg	General Warehouse	\$955,000	13,824	1951	\$19,820
4049 8TH AVE S	St. Petersburg	General Warehouse	\$954,000	12,028	1978	\$19,223
4123 8TH AVE S	St. Petersburg	General Warehouse	\$954,000	12,028	1979	\$19,223
1000 30TH ST S	St. Petersburg	General Warehouse	\$950,000	23,867	1953	\$23,206
8191 46TH AVE N	St. Petersburg	General Warehouse	\$950,000	14,000	1987	\$21,684
2025 3RD AVE S	St. Petersburg	General Warehouse	\$950,000	8,938	1922	\$20,318
2010 1ST AVE S	St. Petersburg	General Warehouse	\$945,000	5,400	1950	\$20,617
2360 25TH ST N	St. Petersburg	General Warehouse	\$945,000	15,400	1967	\$20,756
1700 COMMERCE AVE N	St. Petersburg	General Warehouse	\$941,000	8,224	1986	\$20,726
2430 30TH AVE N	St. Petersburg	General Warehouse	\$940,000	16,000	1959	\$19,511
2894 47TH AVE N	St. Petersburg	General Warehouse	\$935,000	12,200	1965	\$20,105
6025 49TH ST N	St. Petersburg	General Warehouse	\$920,000	12,228	1971	\$22,920
2601 75TH ST N	St. Petersburg	General Warehouse	\$914,000	11,900	1976	\$18,525
1600 3RD ST S	St. Petersburg	General Warehouse	\$912,800	10,704	2001	\$20,119
1630 22ND ST N	St. Petersburg	General Warehouse	\$891,000	8,960	1972	\$18,924
2719 FAIRFIELD AVE S	St. Petersburg	General Warehouse	\$890,000	7,000	1949	\$18,824
2845 21ST AVE N	St. Petersburg	General Warehouse	\$885,000	9,900	1987	\$19,141

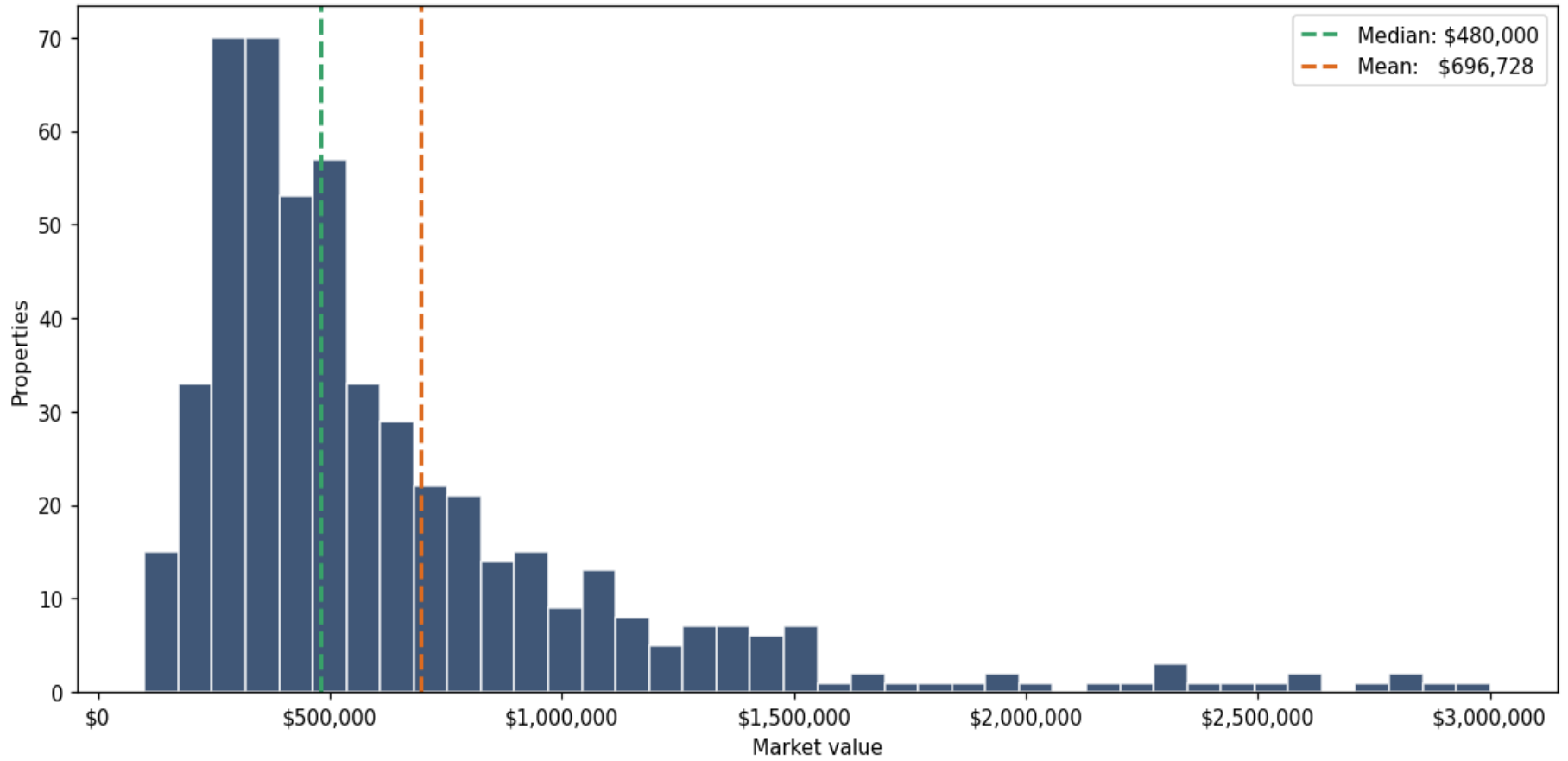
Address	City	Type	Market Value	Sq Ft	Year	Annual Tax
10382 OAK ST NE	St. Petersburg	General Warehouse	\$880,000	12,275	1962	\$16,155
1901 1ST AVE S	St. Petersburg	General Warehouse	\$880,000	5,972	2009	\$20,149
3245 TYRONE BLVD N	St. Petersburg	General Warehouse	\$875,000	11,490	1959	\$19,326
2828 21ST AVE N	St. Petersburg	General Warehouse	\$873,000	9,000	1984	\$18,155
2420 20TH AVE N	St. Petersburg	General Warehouse	\$868,000	8,084	1978	\$17,649
2727 6TH AVE S	St. Petersburg	General Warehouse	\$850,000	7,800	1950	\$18,366
4424 34TH ST N	St. Petersburg	General Warehouse	\$850,000	12,469	1957	\$19,790
3220 28TH ST N	St. Petersburg	General Warehouse	\$846,100	10,638	1984	\$17,928
2852 20TH AVE N	St. Petersburg	General Warehouse	\$840,000	9,676	1969	\$17,928
3436 MORRIS ST N	St. Petersburg	General Warehouse	\$836,000	11,568	2000	\$19,462
7165 30TH AVE N	St. Petersburg	General Warehouse	\$828,000	11,460	1962	\$17,430
2860 23RD AVE N	St. Petersburg	General Warehouse	\$825,000	10,750	1978	\$17,191
1331 22ND ST N	St. Petersburg	General Warehouse	\$825,000	5,600	2002	\$16,932
222 14TH AVE S	St. Petersburg	General Warehouse	\$825,000	6,528	1945	\$17,828
208 14TH ST N	St. Petersburg	General Warehouse	\$820,000	5,000	2002	\$17,619
4071 7TH TER S	St. Petersburg	General Warehouse	\$820,000	10,320	1974	\$16,494
2462 EMERSON AVE S	St. Petersburg	General Warehouse	\$805,000	5,720	1965	\$16,294
6090 45TH ST N	St. Petersburg	General Warehouse	\$800,000	11,900	1986	\$17,763
2820 20TH AVE N	St. Petersburg	General Warehouse	\$790,000	9,896	1977	\$16,653
1830 3RD AVE S	St. Petersburg	General Warehouse	\$790,000	7,848	1965	\$15,856
3901 48TH AVE N	St. Petersburg	General Warehouse	\$788,000	11,600	1985	\$18,421
2420 30TH AVE N	St. Petersburg	General Warehouse	\$780,000	9,600	1989	\$17,828
2558 28TH AVE N	St. Petersburg	General Warehouse	\$777,000	11,020	1960	\$16,693
3001 44TH AVE N	St. Petersburg	General Warehouse	\$777,000	7,920	1966	\$16,842
301 20TH ST S	St. Petersburg	General Warehouse	\$775,000	11,821	1953	\$16,414

Address	City	Type	Market Value	Sq Ft	Year	Annual Tax
5925 CARRIER ST N	St. Petersburg	General Warehouse	\$770,000	10,200	1960	\$19,138
2100 28TH ST N	St. Petersburg	General Warehouse	\$770,000	8,768	1984	\$16,972
2235 16TH AVE N	St. Petersburg	General Warehouse	\$765,000	4,802	1971	\$16,235
2570 25TH AVE N	St. Petersburg	General Warehouse	\$765,000	12,110	1973	\$15,796
3300 38TH AVE S	St. Petersburg	General Warehouse	\$760,000	7,408	1980	\$15,577
4675 LOWN ST N	St. Petersburg	General Warehouse	\$758,000	9,900	1982	\$16,569
2336 5TH AVE S	St. Petersburg	General Warehouse	\$755,000	10,418	1948	\$15,776
2955 46TH AVE N	St. Petersburg	General Warehouse	\$752,000	9,600	1962	\$17,705
4749 58TH AVE N	St. Petersburg	General Warehouse	\$752,000	9,308	1961	\$17,992
1415 BURLINGTON AVE N	St. Petersburg	General Warehouse	\$750,000	9,244	1954	\$15,557
4200 49TH ST N	St. Petersburg	General Warehouse	\$748,000	6,800	1973	\$16,842
4773 58TH AVE N	St. Petersburg	General Warehouse	\$738,000	7,011	1960	\$17,763
4639 LOWN ST N	St. Petersburg	General Warehouse	\$737,000	9,632	1984	\$16,105
3252 MORRIS ST N	St. Petersburg	General Warehouse	\$737,000	10,200	1969	\$15,039
4185 35TH ST N	St. Petersburg	General Warehouse	\$735,000	7,500	2003	\$15,537
2447 5TH AVE S	St. Petersburg	General Warehouse	\$730,000	4,656	1960	\$14,860
5975 CARRIER ST N	St. Petersburg	General Warehouse	\$730,000	9,670	1960	\$18,107
4735 94TH ST N	St. Petersburg	General Warehouse	\$725,000	7,650	2016	\$11,641
4475 28TH ST N	St. Petersburg	General Warehouse	\$725,000	8,806	1962	\$20,948
2519 6TH AVE S	St. Petersburg	General Warehouse	\$710,000	7,565	1958	\$14,641
1258 19TH ST N	St. Petersburg	General Warehouse	\$704,000	10,320	1926	\$15,637
4700 HAINES RD N	St. Petersburg	General Warehouse	\$700,000	4,990	1947	\$16,533
2006 2ND AVE S	St. Petersburg	General Warehouse	\$698,000	4,000	2007	\$15,537
2819 21ST AVE N	St. Petersburg	General Warehouse	\$696,000	7,920	1981	\$15,318
1330 2ND ST S	St. Petersburg	General Warehouse	\$690,000	10,140	1951	\$17,071

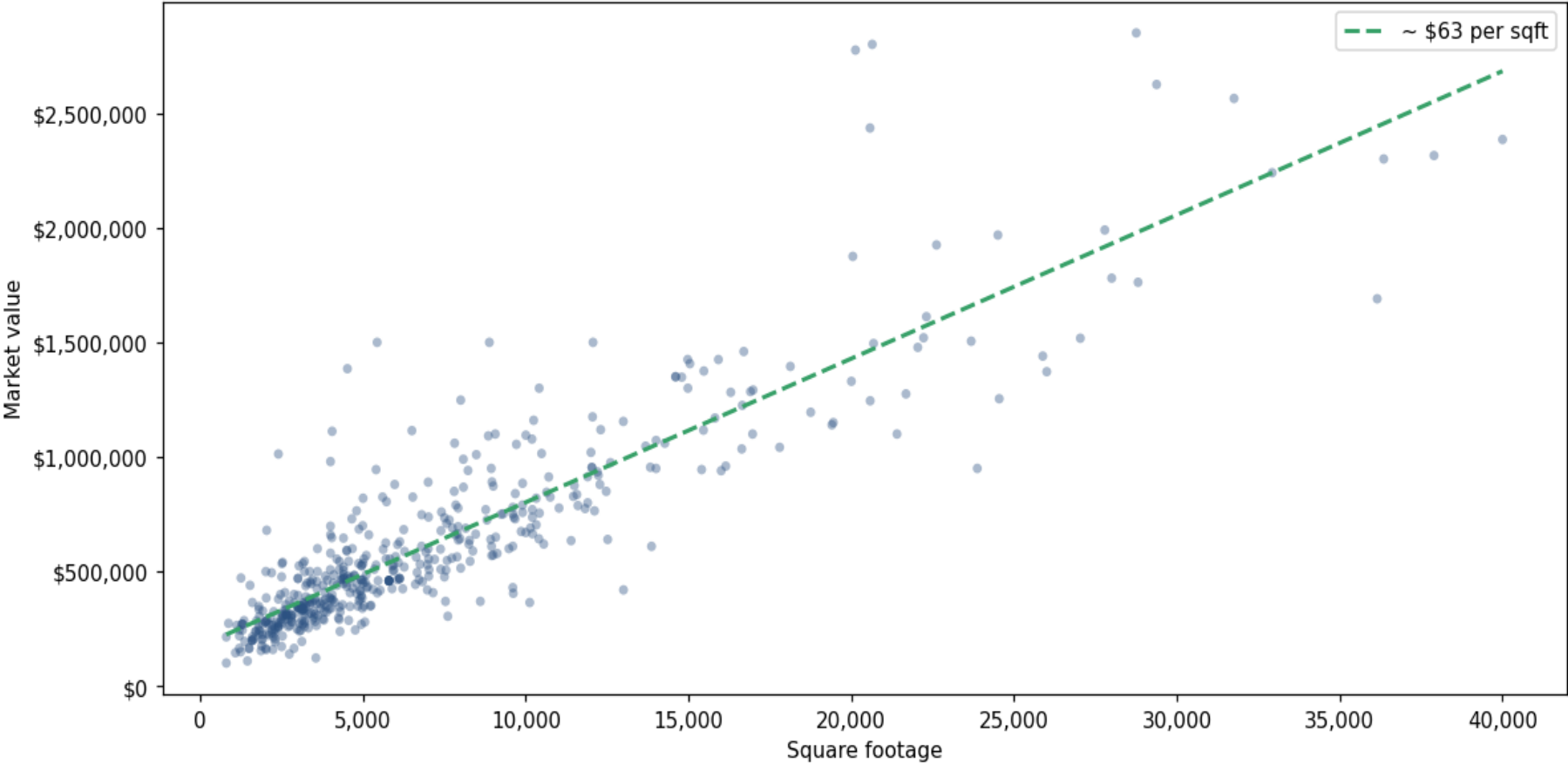
Address	City	Type	Market Value	Sq Ft	Year	Annual Tax
12105 28TH ST N	St. Petersburg	General Warehouse	\$690,000	7,746	2000	\$15,039
3200 26TH ST N	St. Petersburg	General Warehouse	\$689,000	8,155	1959	\$15,139
2500 EMERSON AVE S	St. Petersburg	General Warehouse	\$685,000	4,875	1956	\$13,944
2028 28TH ST N	St. Petersburg	General Warehouse	\$683,000	6,250	1989	\$14,183
25 15TH ST N	St. Petersburg	General Warehouse	\$680,000	2,040	1965	\$13,751
4664 FREEMONT TER S	St. Petersburg	General Warehouse	\$678,000	7,392	1976	\$13,673
745 40TH ST S	St. Petersburg	General Warehouse	\$675,000	9,856	1978	\$13,486
3170 23RD AVE N	St. Petersburg	General Warehouse	\$670,000	10,000	1973	\$13,944
6461 5TH AVE S	St. Petersburg	General Warehouse	\$665,000	10,206	1926	\$14,599
2830 46TH AVE N	St. Petersburg	General Warehouse	\$665,000	7,901	1964	\$14,737
325 20TH AVE N	St. Petersburg	General Warehouse	\$663,309	8,460	1957	\$14,243
1100 34TH ST S	St. Petersburg	General Warehouse	\$660,000	4,000	1979	\$13,247
2855 44TH AVE N	St. Petersburg	General Warehouse	\$660,000	7,832	2002	\$15,158
2855 22ND AVE N	St. Petersburg	General Warehouse	\$660,000	5,177	1960	\$13,486
1601 3RD ST S	St. Petersburg	General Warehouse	\$650,000	9,076	1935	\$15,239
2500 25TH AVE N	St. Petersburg	General Warehouse	\$648,000	4,040	1963	\$13,346
3251 MORRIS ST	St. Petersburg	General Warehouse	\$646,000	4,399	1960	\$13,944
2300 26TH AVE N	St. Petersburg	General Warehouse	\$643,000	10,400	1960	\$13,147
540 34TH ST S	St. Petersburg	General Warehouse	\$643,000	7,980	1974	\$13,446
4570 37TH ST N	St. Petersburg	General Warehouse	\$640,000	12,514	1955	\$14,421
5275 95TH WAY N	St. Petersburg	General Warehouse	\$640,000	8,920	1989	\$12,051
3230 BENNETT ST N	St. Petersburg	General Warehouse	\$638,000	7,924	1981	\$13,346
2200 16TH AVE N	St. Petersburg	General Warehouse	\$636,000	8,271	1968	\$13,944
4800 95TH ST N	St. Petersburg	General Warehouse	\$635,000	11,390		\$11,406
928 18TH ST N	St. Petersburg	General Warehouse	\$630,000	6,128	1981	\$13,346

Address	City	Type	Market Value	Sq Ft	Year	Annual Tax
1975 3RD AVE S	St. Petersburg	General Warehouse	\$625,000	5,696	1957	\$12,948
2885 46TH AVE N	St. Petersburg	General Warehouse	\$620,000	8,250	1972	\$13,895
633 14TH AVE S	St. Petersburg	General Warehouse	\$620,000	10,550	1925	\$14,243
3900 31ST ST N	St. Petersburg	General Warehouse	\$618,000	6,060	1987	\$13,271
2718 24TH ST N	St. Petersburg	General Warehouse	\$610,000	9,600	1959	\$12,948
701 DR MARTIN LUTHER KING JR ST	St. Petersburg	General Warehouse	\$610,000	13,861	1949	\$14,043
3151 24TH AVE N	St. Petersburg	General Warehouse	\$610,000	8,948	1971	\$12,808
7173 30TH AVE N	St. Petersburg	General Warehouse	\$610,000	6,796	1964	\$13,147
3311 TYRONE BLVD	St. Petersburg	General Warehouse	\$600,000	4,670	1957	\$12,171
6536 LINCOLN WAY N	St. Petersburg	General Warehouse	\$600,000	9,480	1959	\$15,109
3221 39TH AVE S	St. Petersburg	General Warehouse	\$600,000	7,004	2003	\$12,390
1124 19TH ST N	St. Petersburg	General Warehouse	\$600,000	3,600	1983	\$12,151

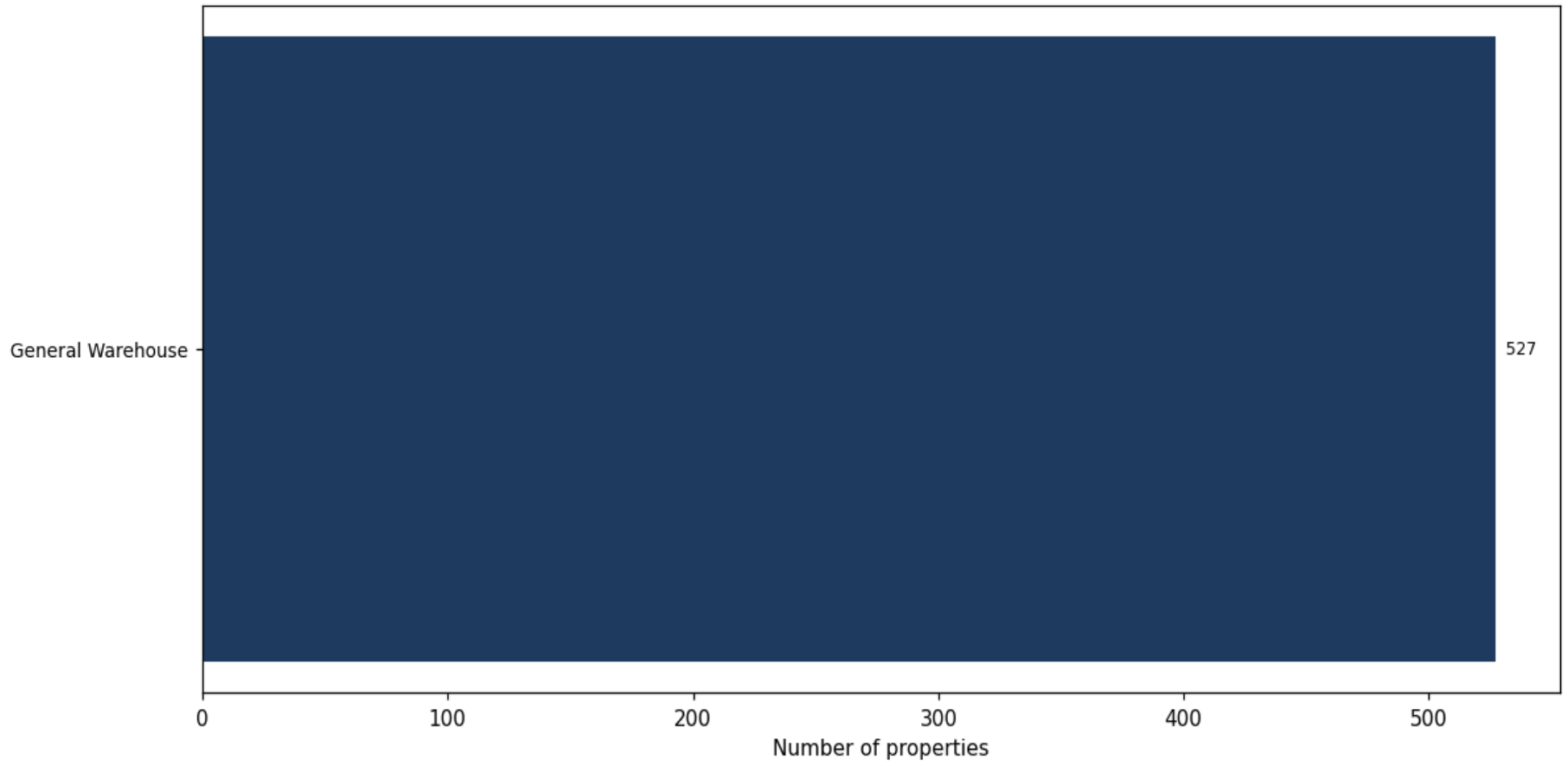
Market value distribution (n=524, top 1% trimmed for readability)



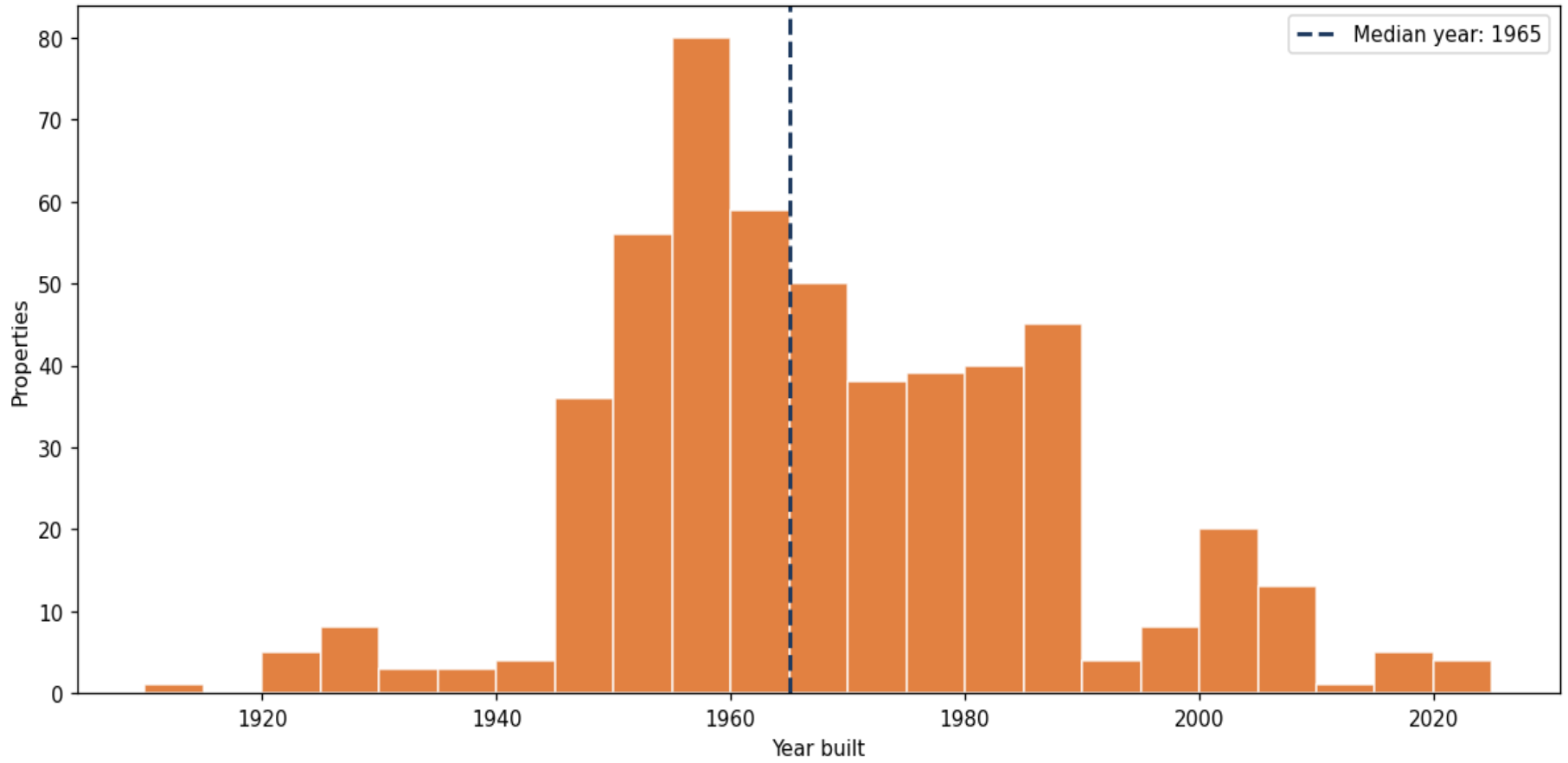
Building size vs. market value (n=512, outliers trimmed)



Top property types by count



Year built distribution (5-year buckets)



Market value vs. assessed value (gap = untaxed appreciation)

