

# Pinellas Property Market Report

65 matching properties • May 30, 2026

Filters applied	Headline numbers
<b>City:</b> Seminole	<b>Properties matched:</b> 65
<b>Property type:</b> Single Family - more than one house per parcel	<b>Median market value:</b> \$834,198
	<b>Mean market value:</b> \$911,353
	<b>Min / Max:</b> \$260,051 / \$3,618,498
	<b>Mean square footage:</b> 3,424

## Top 65 properties by market value

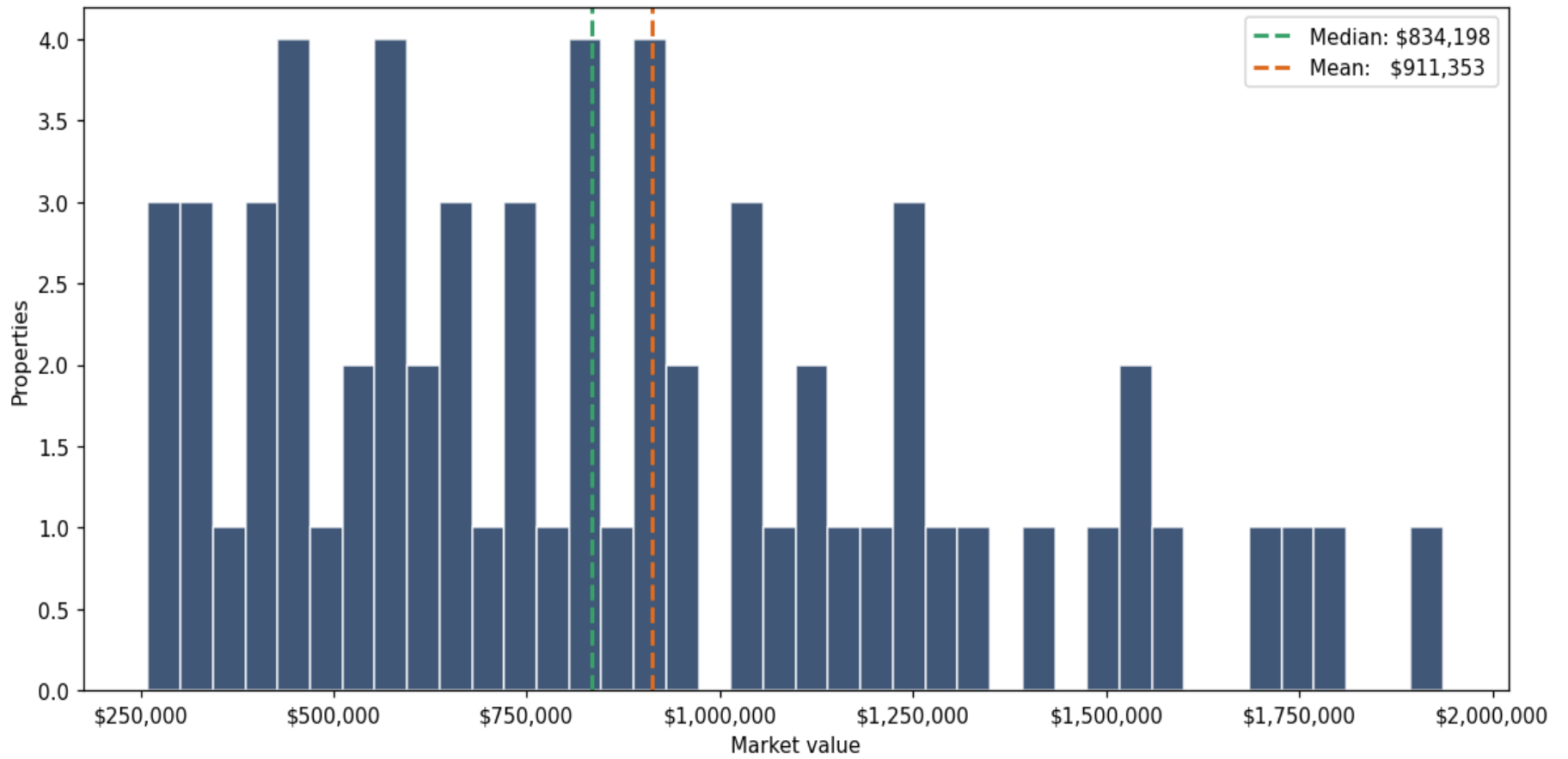
Address	City	Type	Market Value	Sq Ft	Year	Annual Tax
13548 74TH AVE	Seminole	Single Family - more tha	\$3,618,498	8,184	2012	\$61,261
13450 73RD AVE	Seminole	Single Family - more tha	\$1,936,324	4,342	2004	\$32,196
7496 DREW OAK DR	Seminole	Single Family - more tha	\$1,799,947	6,409	1984	\$31,588
9725 131ST ST	Seminole	Single Family - more tha	\$1,765,633	5,645	1979	\$26,776
9300 102ND AVE	Seminole	Single Family - more tha	\$1,713,098	5,130	2022	\$31,195
13400 73RD AVE	Seminole	Single Family - more tha	\$1,571,196	3,464	1985	\$26,604
9155 94TH AVE	Seminole	Single Family - more tha	\$1,544,044	3,096	1999	\$28,401
13250 86TH AVE	Seminole	Single Family - more tha	\$1,535,896	5,806	1967	\$27,671
9659 125TH ST	Seminole	Single Family - more tha	\$1,482,704	5,385	1974	\$25,958
13380 86TH AVE	Seminole	Single Family - more tha	\$1,411,921	3,457	1965	\$24,760
6525 BURNING TREE DR	Seminole	Single Family - more tha	\$1,310,371	4,028	1975	\$23,365
9669 125TH ST	Seminole	Single Family - more tha	\$1,271,621	5,382	1975	\$23,609
12600 86TH AVE	Seminole	Single Family - more tha	\$1,256,798	3,867	1981	\$23,266

Address	City	Type	Market Value	Sq Ft	Year	Annual Tax
7550 128TH ST	Seminole	Single Family - more tha	\$1,238,858	5,172	1980	\$20,522
10370 LONGWOOD DR	Seminole	Single Family - more tha	\$1,234,030	4,151	1990	\$21,246
13211 PARK BLVD	Seminole	Single Family - more tha	\$1,190,032	5,287	2002	\$20,670
8995 82ND AVE	Seminole	Single Family - more tha	\$1,148,623	6,119	1978	\$18,579
7929 98TH ST	Seminole	Single Family - more tha	\$1,132,403	4,053	1988	\$17,168
7200 118TH ST	Seminole	Single Family - more tha	\$1,107,314	4,183	1967	\$19,770
11381 OAK LN	Seminole	Single Family - more tha	\$1,090,743	4,880	2000	\$19,353
9700 90TH AVE	Seminole	Single Family - more tha	\$1,055,145	5,263	1950	\$19,227
7850 128TH ST	Seminole	Single Family - more tha	\$1,029,812	3,374	2001	\$19,184
12909 PARK BLVD	Seminole	Single Family - more tha	\$1,018,228	5,852	1977	\$18,206
6625 BURNING TREE DR	Seminole	Single Family - more tha	\$959,126	3,589	1965	\$17,875
9460 94TH ST	Seminole	Single Family - more tha	\$937,052	3,496	1990	\$17,193
9675 94TH ST	Seminole	Single Family - more tha	\$928,111	3,612	1976	\$16,903
8797 ROSE WAY	Seminole	Single Family - more tha	\$918,298	2,521	2017	\$16,542
8057 98TH ST	Seminole	Single Family - more tha	\$916,464	4,299	1979	\$14,154
11680 74TH AVE	Seminole	Single Family - more tha	\$889,639	2,599	1918	\$14,282
10555 HAZEL ST	Seminole	Single Family - more tha	\$849,328	2,544	1954	\$14,527
9355 ANTILLES DR	Seminole	Single Family - more tha	\$845,334	3,582	1950	\$14,810
9700 94TH ST	Seminole	Single Family - more tha	\$844,705	3,523	1976	\$15,420
10710 NINA ST	Seminole	Single Family - more tha	\$834,198	2,205	1972	\$13,528
12750 PARK BLVD	Seminole	Single Family - more tha	\$814,419	1,644	1927	\$13,942
9590 135TH ST	Seminole	Single Family - more tha	\$788,582	2,433	2010	\$13,102
11496 74TH AVE	Seminole	Single Family - more tha	\$761,901	2,426	1954	\$11,972
10401 NINA ST	Seminole	Single Family - more tha	\$740,639	3,424	1960	\$11,653
12027 119TH ST	Seminole	Single Family - more tha	\$735,780	3,636	1956	\$14,385

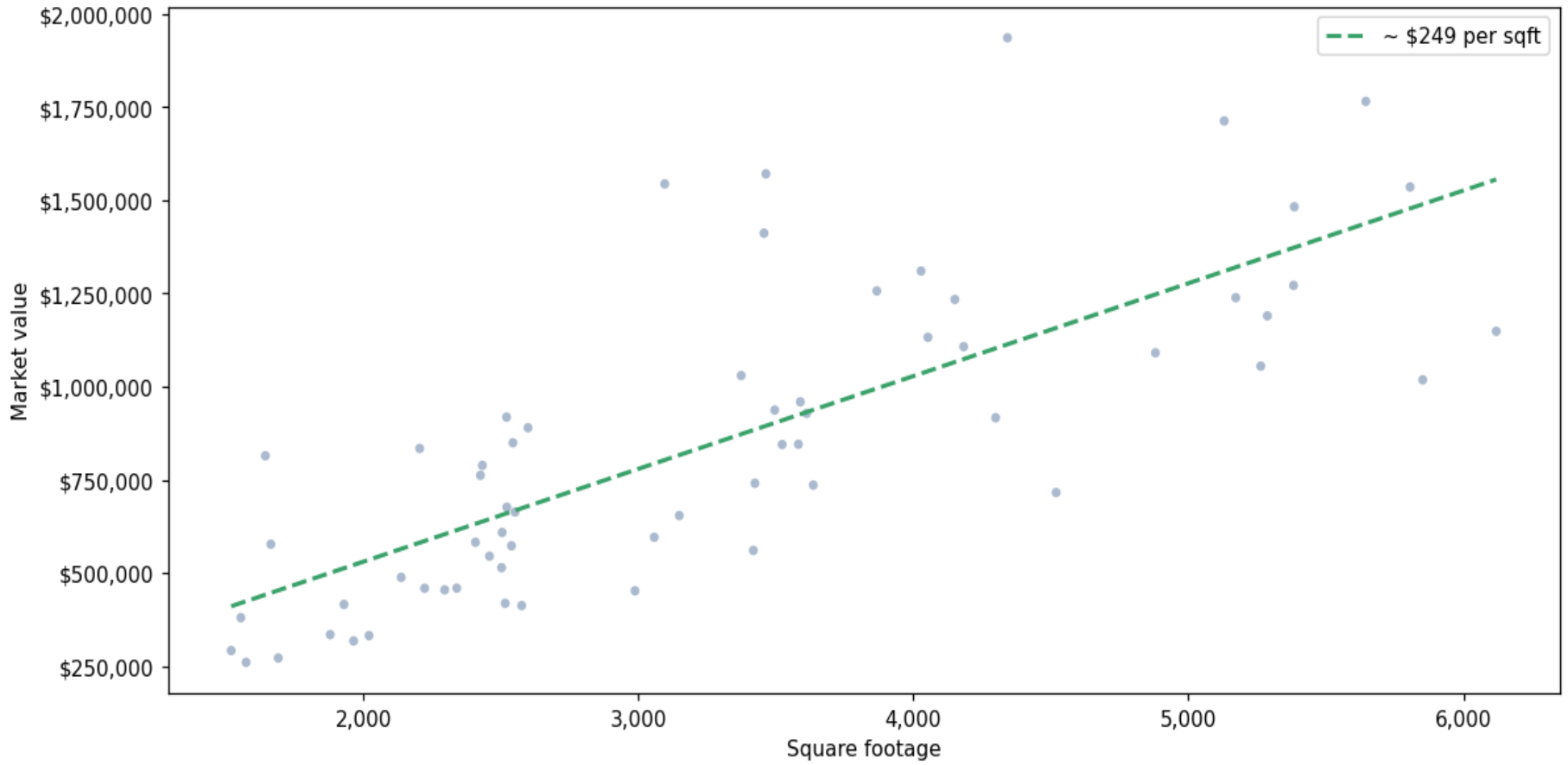
Address	City	Type	Market Value	Sq Ft	Year	Annual Tax
11446 1/2 77TH CT N	Seminole	Single Family - more tha	\$715,736	4,519	1959	\$12,556
13478 98TH AVE	Seminole	Single Family - more tha	\$676,274	2,522	1972	\$11,192
10701 59TH AVE	Seminole	Single Family - more tha	\$663,540	2,552	1950	\$12,135
8801 98TH ST	Seminole	Single Family - more tha	\$653,998	3,149	1950	\$10,479
12835 74TH AVE	Seminole	Single Family - more tha	\$608,573	2,505	1981	\$11,041
11892 MURRAY AVE	Seminole	Single Family - more tha	\$595,674	3,058	1956	\$11,135
11397 70TH AVE	Seminole	Single Family - more tha	\$582,295	2,408	1960	\$10,339
8718 RIDGE RD	Seminole	Single Family - more tha	\$577,109	1,664	1959	\$10,215
12210 91ST AVE	Seminole	Single Family - more tha	\$572,818	2,539	1976	\$10,076
12171 74TH AVE	Seminole	Single Family - more tha	\$560,455	3,418	1947	\$10,039
11324 118TH PL	Seminole	Single Family - more tha	\$544,973	2,459	1960	\$8,575
8623 108TH ST	Seminole	Single Family - more tha	\$514,160	2,503	1971	\$8,150
11355 DAUPHIN AVE	Seminole	Single Family - more tha	\$487,939	2,138	1957	\$8,117
10705 59TH AVE	Seminole	Single Family - more tha	\$459,200	2,340	1944	\$8,323
10826 72ND AVE	Seminole	Single Family - more tha	\$458,792	2,223	1949	\$7,300
241 23RD AVE SW	Seminole	Single Family - more tha	\$454,557	2,296	1983	\$7,193
5625 113TH ST	Seminole	Single Family - more tha	\$451,992	2,988	1953	\$8,097
10797 72ND AVE	Seminole	Single Family - more tha	\$418,445	2,516	1946	\$6,756
11724 132ND AVE	Seminole	Single Family - more tha	\$415,559	1,930	1922	\$6,056
11335 WALKER AVE	Seminole	Single Family - more tha	\$412,432	2,576	1924	\$6,582
5585 113TH ST N	Seminole	Single Family - more tha	\$379,815	1,555	1947	\$7,304
9032 SUNCREST BLVD	Seminole	Single Family - more tha	\$334,371	1,880	1961	\$6,001
8537 93RD AVE	Seminole	Single Family - more tha	\$331,798	2,021	1959	\$5,953
11889 119TH ST	Seminole	Single Family - more tha	\$317,434	1,965	1950	\$6,423
11600 109TH ST	Seminole	Single Family - more tha	\$291,627	1,520	1959	\$5,309

Address	City	Type	Market Value	Sq Ft	Year	Annual Tax
10825 71ST AVE	Seminole	Single Family - more tha	\$271,540	1,691	1954	\$4,305
10806 72ND AVE	Seminole	Single Family - more tha	\$260,051	1,574	1949	\$4,186

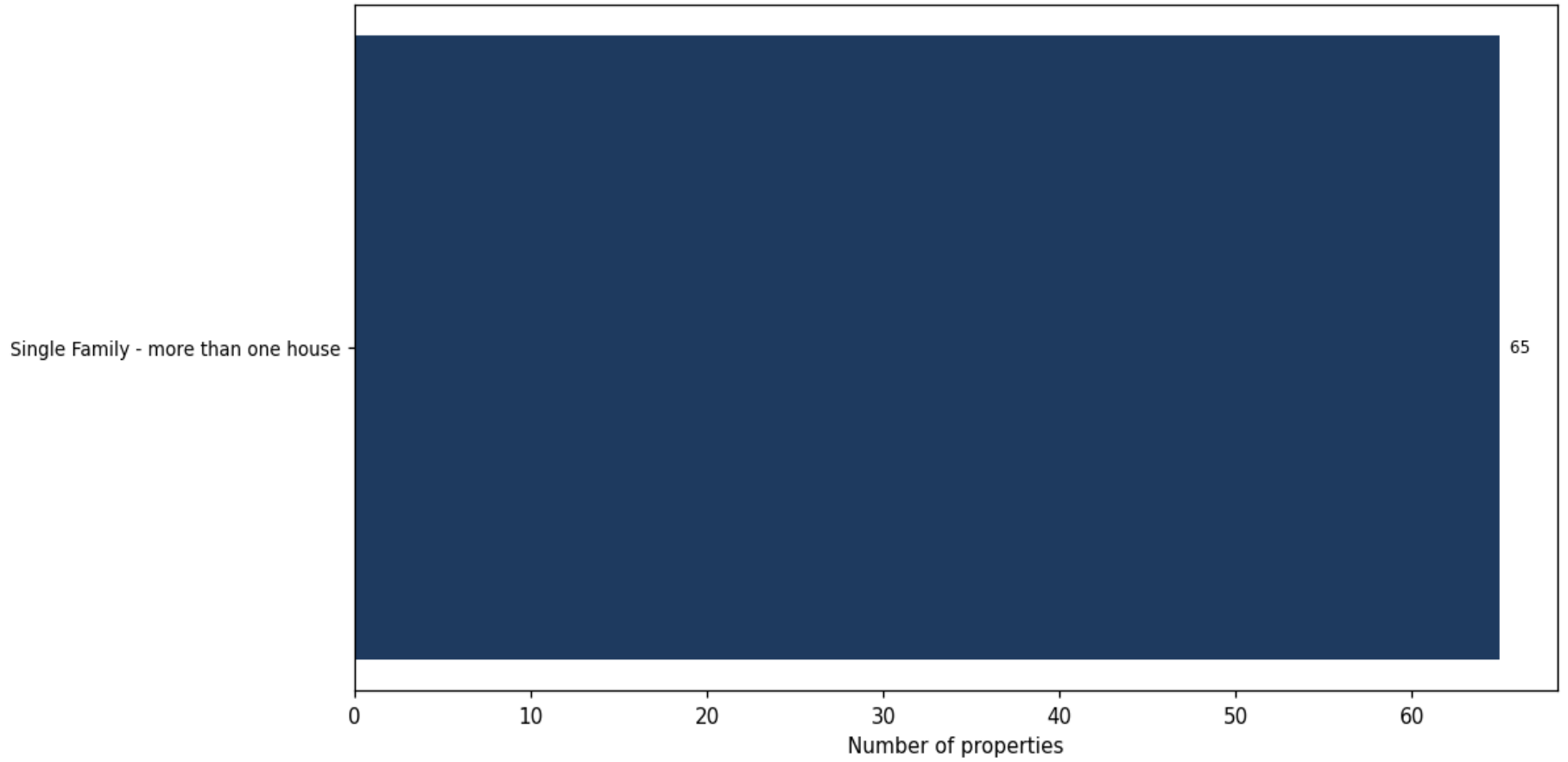
**Market value distribution (n=65, top 1% trimmed for readability)**



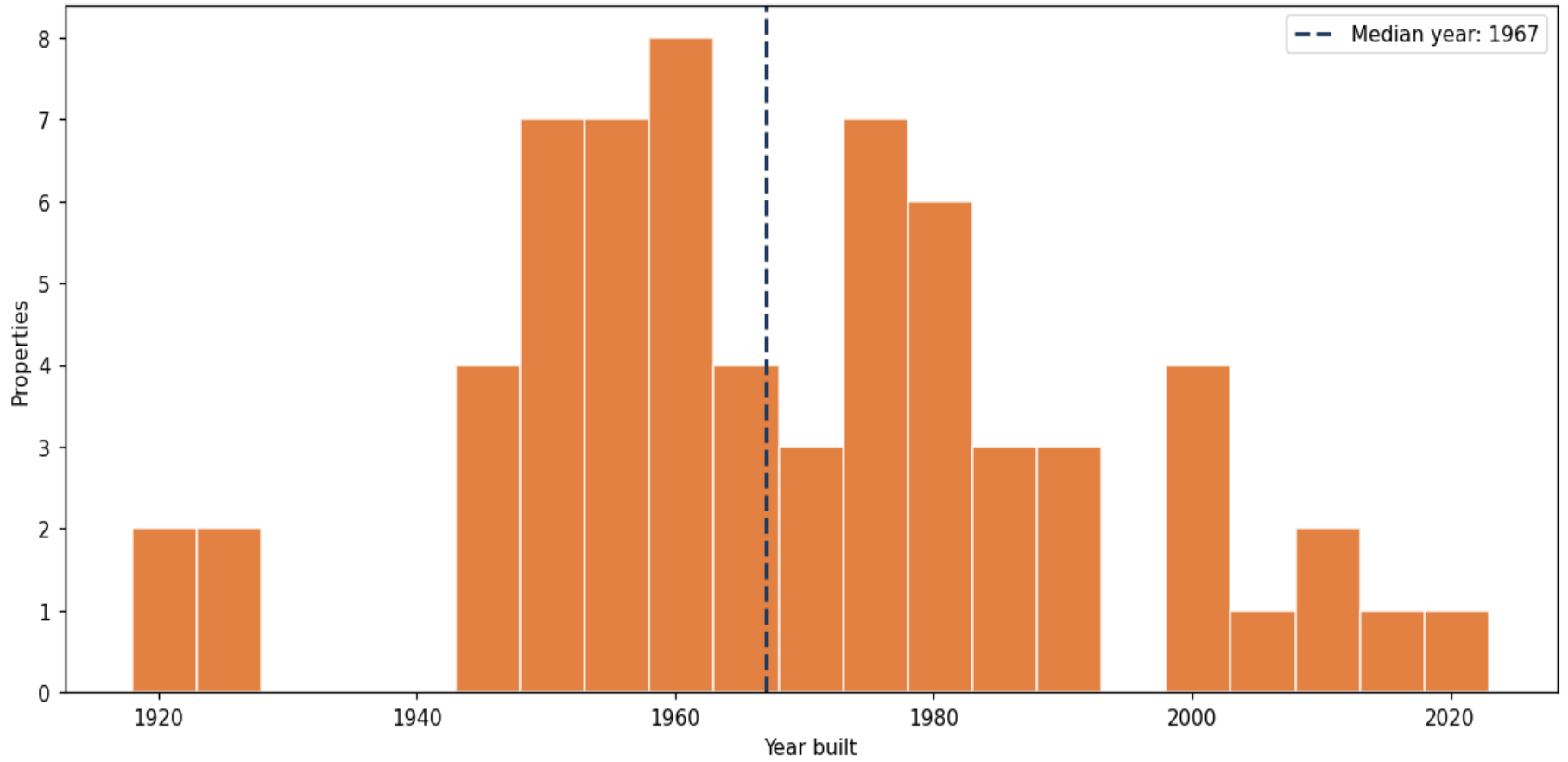
**Building size vs. market value (n=63, outliers trimmed)**



### Top property types by count



**Year built distribution (5-year buckets)**



**Market value vs. assessed value (gap = untaxed appreciation)**

