

# Pinellas Property Market Report

46 matching properties • May 30, 2026

Filters applied	Headline numbers
<b>City:</b> Seminole	<b>Properties matched:</b> 46
<b>Property type:</b> Medical Office Building - single	<b>Median market value:</b> \$630,000
	<b>Mean market value:</b> \$776,065
	<b>Min / Max:</b> \$176,500 / \$2,500,000
	<b>Mean square footage:</b> 5,436

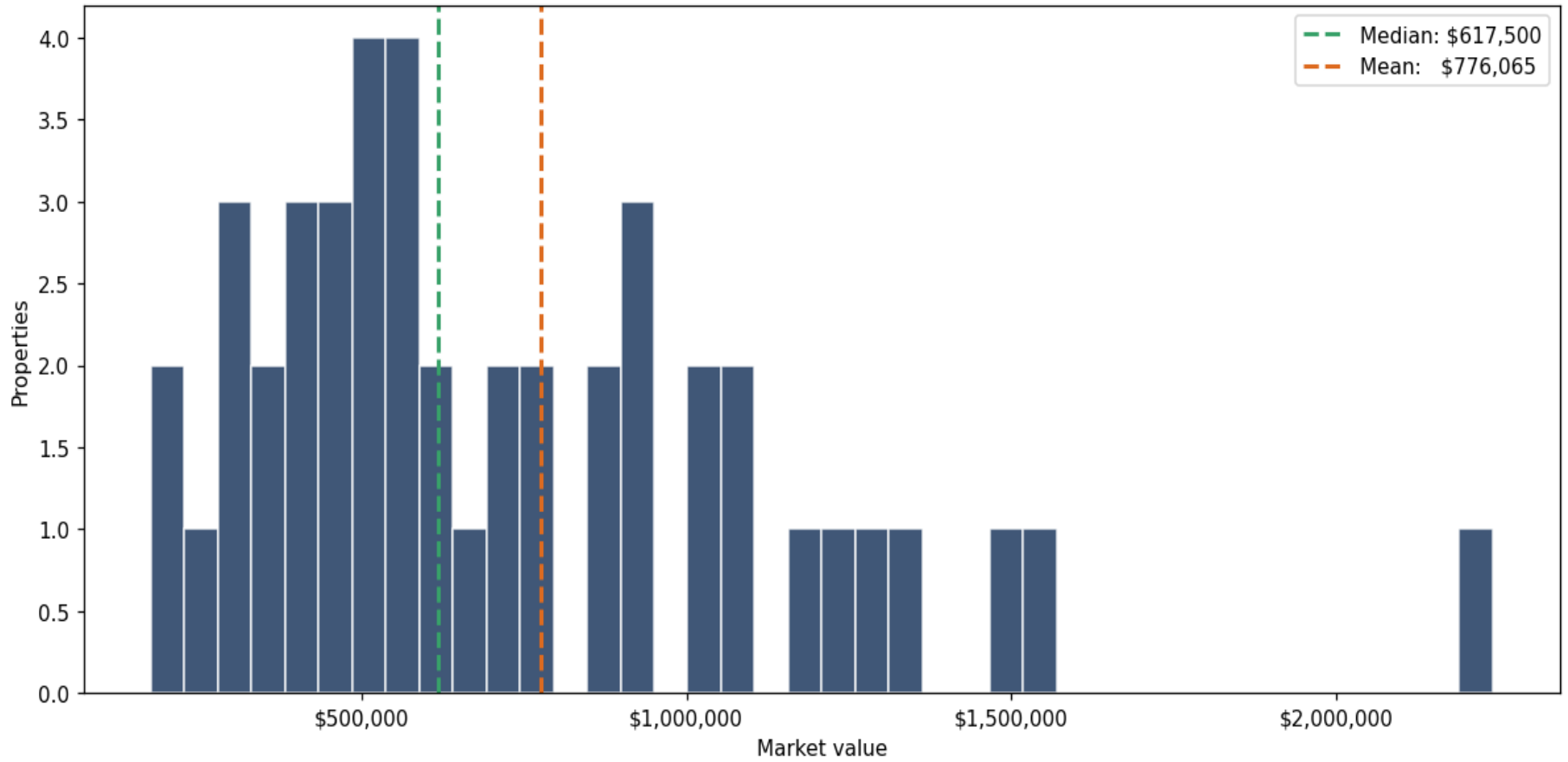
## Top 46 properties by market value

Address	City	Type	Market Value	Sq Ft	Year	Annual Tax
9555 SEMINOLE BLVD # 102	Seminole	Medical Office Building	\$2,500,000	25,712	1985	\$39,866
8900 PARK BLVD	Seminole	Medical Office Building	\$2,240,000	9,599	2015	\$35,720
5398 PARK ST N	Seminole	Medical Office Building	\$1,560,000	9,761	1984	\$24,877
11550 ULMERTON RD	Seminole	Medical Office Building	\$1,500,000	7,003	1995	\$26,509
12020 SEMINOLE BLVD	Seminole	Medical Office Building	\$1,330,000	16,419	1981	\$23,837
4710 PARK ST	Seminole	Medical Office Building	\$1,274,500	4,336	2009	\$20,324
12170 SEMINOLE BLVD	Seminole	Medical Office Building	\$1,215,000	6,240	2010	\$21,776
8381 SEMINOLE BLVD	Seminole	Medical Office Building	\$1,190,000	8,514	1981	\$18,976
10601 SEMINOLE BLVD	Seminole	Medical Office Building	\$1,090,000	4,273	1987	\$19,732
7601 SEMINOLE BLVD	Seminole	Medical Office Building	\$1,090,000	8,300	1985	\$17,382
10875 PARK BLVD	Seminole	Medical Office Building	\$1,035,000	8,852	1987	\$16,505
13020 PARK BLVD	Seminole	Medical Office Building	\$1,010,000	7,600	1991	\$18,284
12150 SEMINOLE BLVD	Seminole	Medical Office Building	\$940,000	4,929	1978	\$16,848

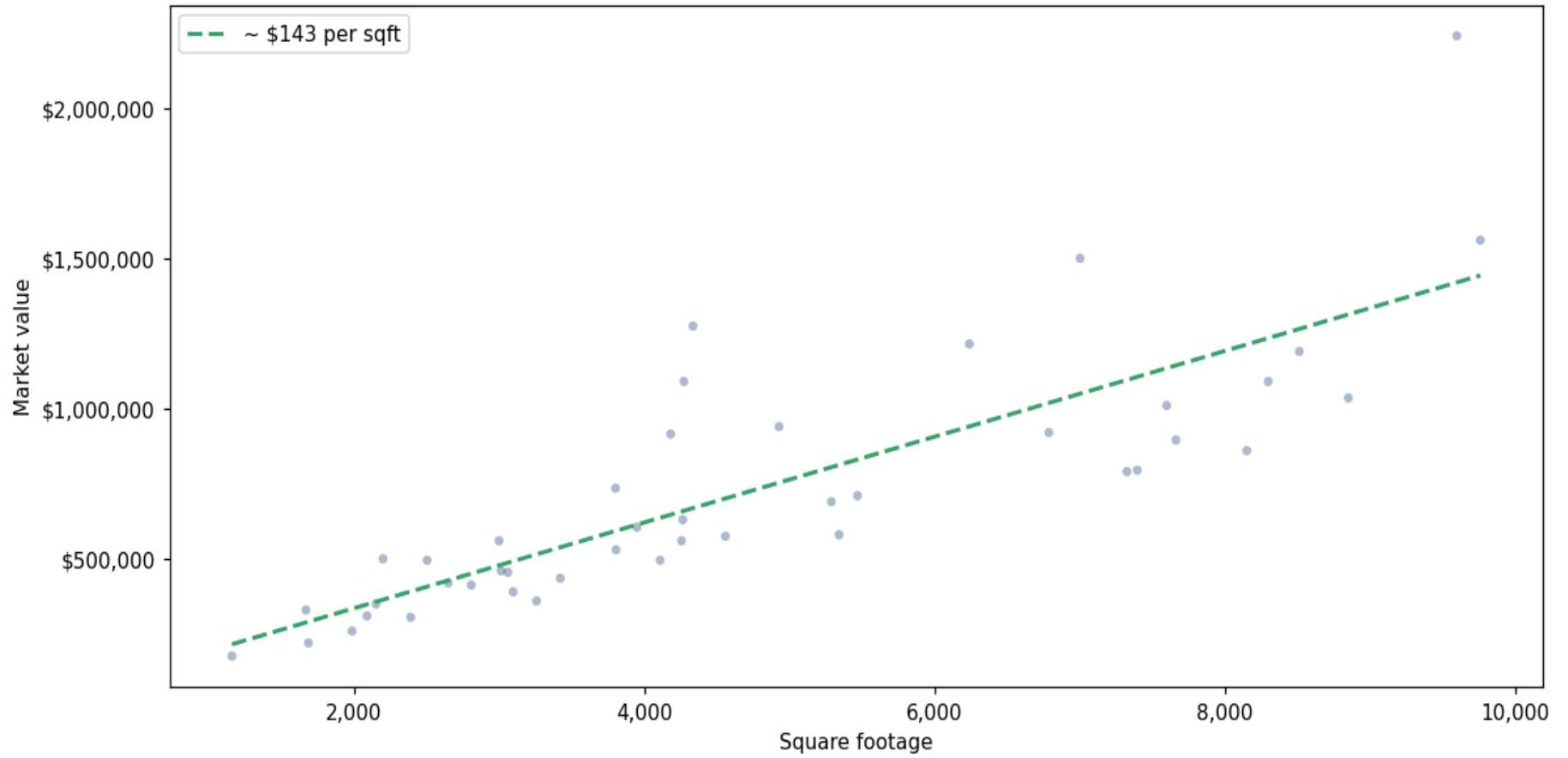
Address	City	Type	Market Value	Sq Ft	Year	Annual Tax
9677 SEMINOLE BLVD	Seminole	Medical Office Building	\$920,000	6,789	1972	\$14,671
9075 SEMINOLE BLVD	Seminole	Medical Office Building	\$915,000	4,182	1986	\$14,591
8588 STARKEY RD	Seminole	Medical Office Building	\$895,000	7,664	1987	\$14,272
13690 PARK BLVD	Seminole	Medical Office Building	\$860,000	8,152	1980	\$15,568
10099 SEMINOLE BLVD	Seminole	Medical Office Building	\$795,000	7,398	1975	\$14,392
10011 SEMINOLE BLVD	Seminole	Medical Office Building	\$790,000	7,326	1975	\$14,301
8500 113TH ST	Seminole	Medical Office Building	\$735,000	3,803	1991	\$12,470
5200 SEMINOLE BLVD	Seminole	Medical Office Building	\$710,000	5,470	1984	\$11,322
5100 SEMINOLE BLVD	Seminole	Medical Office Building	\$690,000	5,290	1958	\$11,003
7101 PARK ST	Seminole	Medical Office Building	\$630,000	4,266	1988	\$10,046
7603 SEMINOLE BLVD	Seminole	Medical Office Building	\$605,000	3,950	1984	\$9,648
10700 SEMINOLE BLVD	Seminole	Medical Office Building	\$580,000	5,343	1957	\$10,500
10710 SEMINOLE BLVD	Seminole	Medical Office Building	\$575,000	4,560	1976	\$10,409
11405 SEMINOLE BLVD	Seminole	Medical Office Building	\$560,000	3,000	2020	\$10,138
9009 PARK BLVD	Seminole	Medical Office Building	\$560,000	4,257	1977	\$8,930
6450 SEMINOLE BLVD	Seminole	Medical Office Building	\$530,000	3,806	1972	\$9,595
11500 SEMINOLE BLVD	Seminole	Medical Office Building	\$500,000	2,201	1957	\$9,051
13611 PARK BLVD	Seminole	Medical Office Building	\$495,000	4,110	1979	\$8,961
6019 SEMINOLE BLVD	Seminole	Medical Office Building	\$495,000	2,505	2004	\$7,894
10820 SEMINOLE BLVD	Seminole	Medical Office Building	\$460,000	3,015	1964	\$8,327
8475 SEMINOLE BLVD	Seminole	Medical Office Building	\$455,000	3,061	1990	\$7,256
7050 SEMINOLE BLVD	Seminole	Medical Office Building	\$435,000	3,422	1976	\$6,937
7730 STARKEY RD	Seminole	Medical Office Building	\$420,000	2,650	1984	\$6,698
8578 PARK BLVD	Seminole	Medical Office Building	\$412,500	2,808	1962	\$6,578
11375 PARK BLVD	Seminole	Medical Office Building	\$390,000	3,097	1964	\$7,060

Address	City	Type	Market Value	Sq Ft	Year	Annual Tax
11444 SEMINOLE BLVD	Seminole	Medical Office Building	\$360,000	3,259	1956	\$6,517
5481 SEMINOLE BLVD	Seminole	Medical Office Building	\$350,000	2,153	1956	\$5,581
9951 SEMINOLE BLVD	Seminole	Medical Office Building	\$330,000	1,670	1974	\$5,974
8300 113TH ST	Seminole	Medical Office Building	\$310,000	2,090	1994	\$5,222
5305 SEMINOLE BLVD	Seminole	Medical Office Building	\$305,500	2,391	1955	\$4,872
10170 SEMINOLE BLVD	Seminole	Medical Office Building	\$260,000	1,987	1961	\$4,146
7676 131ST ST	Seminole	Medical Office Building	\$220,000	1,687	1974	\$4,182
10833 70TH AVE	Seminole	Medical Office Building	\$176,500	1,160	1935	\$2,990

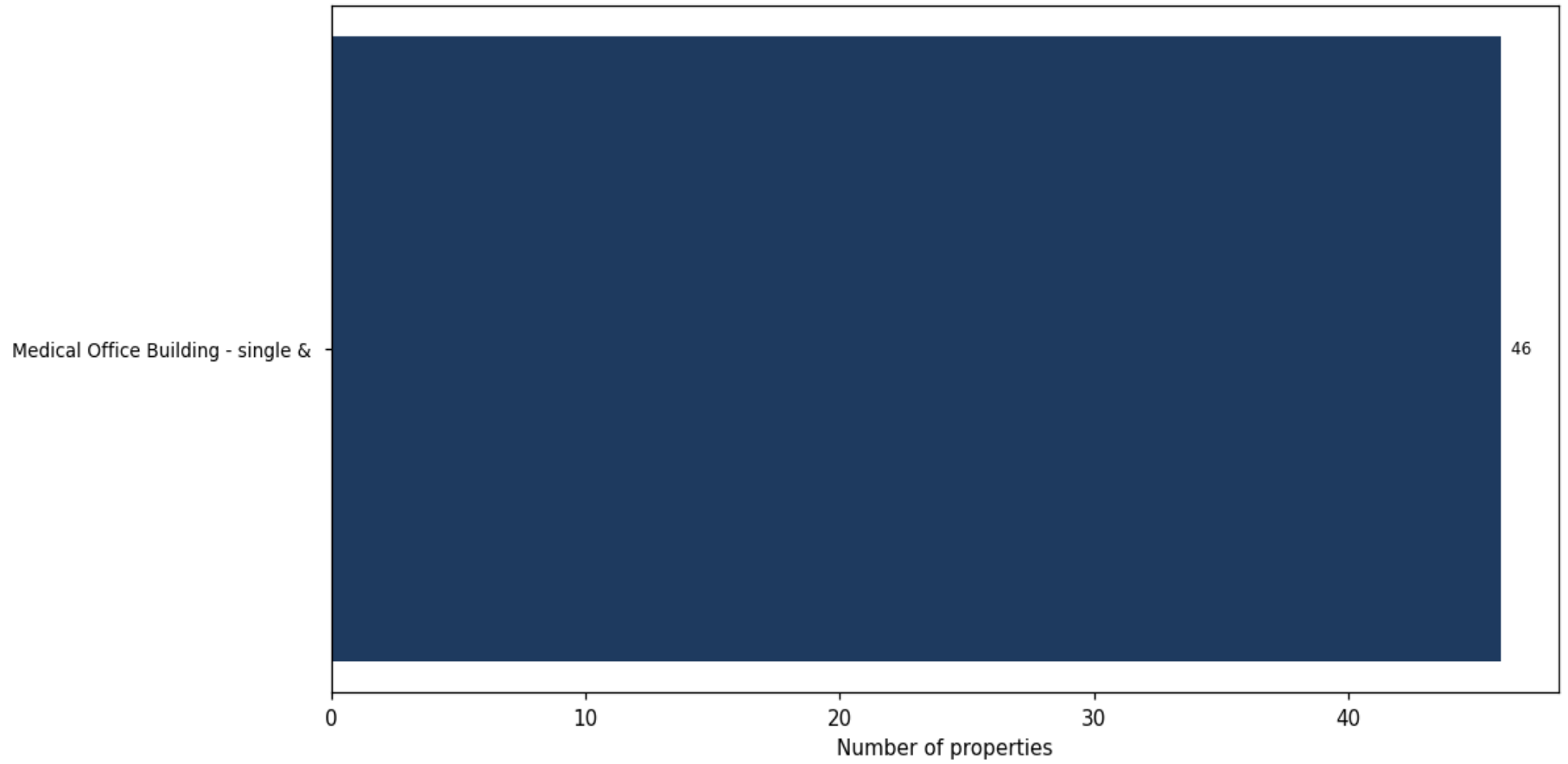
**Market value distribution (n=46, top 1% trimmed for readability)**



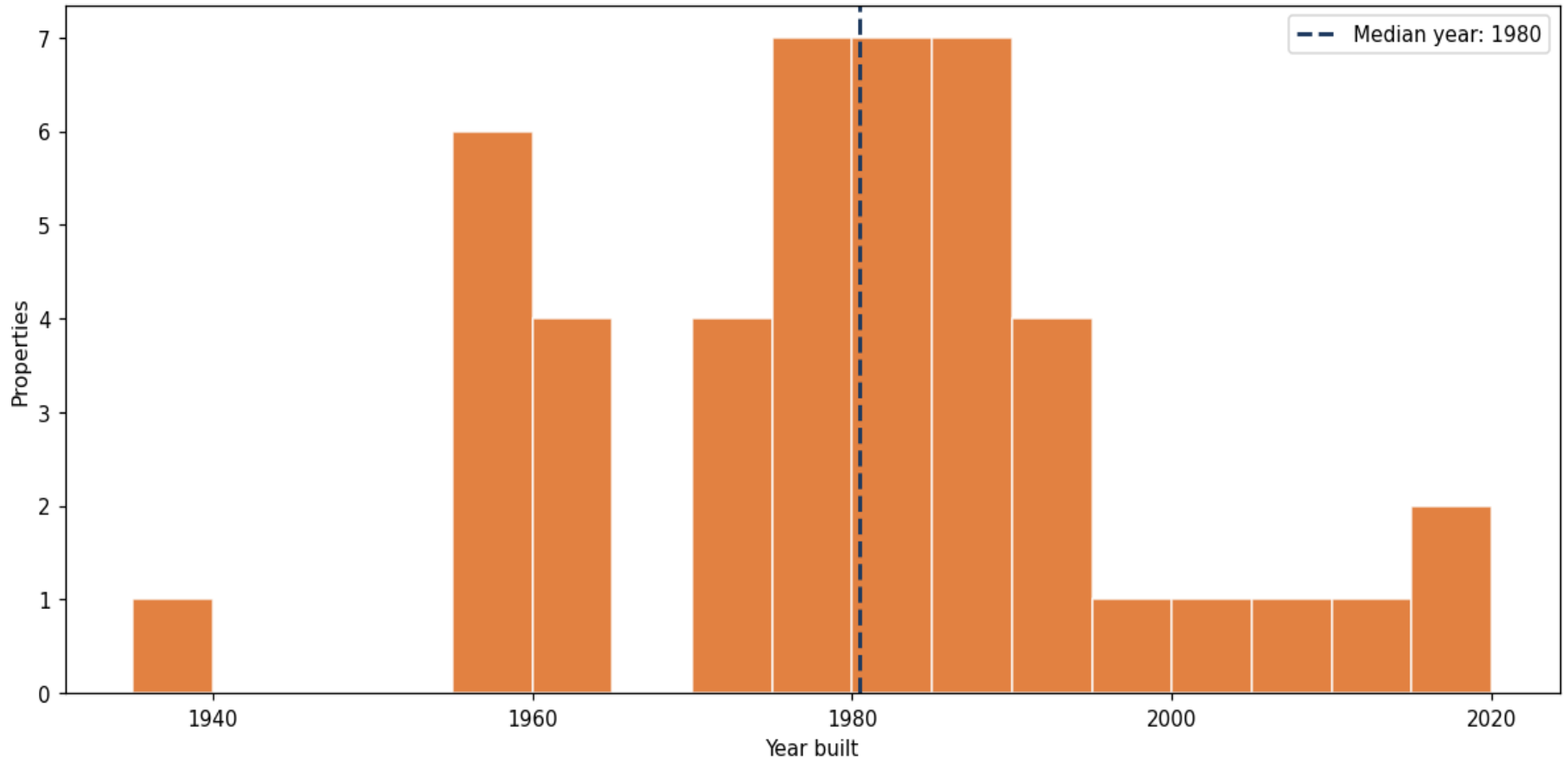
**Building size vs. market value (n=44, outliers trimmed)**



### Top property types by count



**Year built distribution (5-year buckets)**



**Market value vs. assessed value (gap = untaxed appreciation)**

