

# Pinellas Property Market Report

4,460 matching properties • June 01, 2026

Filters applied	Headline numbers
<b>City:</b> Seminole	<b>Properties matched:</b> 4,460
<b>Property type:</b> Condominium	<b>Median market value:</b> \$175,042
	<b>Mean market value:</b> \$202,603
	<b>Min / Max:</b> \$43,350 / \$725,175
	<b>Mean square footage:</b> 1,162

## Top 200 properties by market value

Address	City	Type	Market Value	Sq Ft	Year	Annual Tax
6550 SHORELINE DR # 7505	Seminole	Condominium	\$725,175	2,860	2001	\$9,867
7040 KEY HAVEN RD # 606	Seminole	Condominium	\$590,214	2,100	2006	\$8,593
7905 SEMINOLE BLVD # 3201	Seminole	Condominium	\$512,366	2,040	2007	\$6,558
7040 KEY HAVEN RD # 506	Seminole	Condominium	\$512,275	2,100	2006	\$7,671
10002 KEY HAVEN RD # 606	Seminole	Condominium	\$510,367	2,100	2007	\$7,603
10002 KEY HAVEN RD # 601	Seminole	Condominium	\$510,367	2,100	2007	\$7,464
7040 KEY HAVEN RD # 601	Seminole	Condominium	\$505,277	2,100	2006	\$7,563
7194 KEY HAVEN RD # 606	Seminole	Condominium	\$500,823	2,100	2005	\$7,445
7070 KEY HAVEN RD # 601	Seminole	Condominium	\$500,823	2,100	2005	\$7,420
7070 KEY HAVEN RD # 606	Seminole	Condominium	\$500,823	2,100	2005	\$7,420
7194 KEY HAVEN RD # 601	Seminole	Condominium	\$500,823	2,100	2005	\$7,420
7296 MARATHON DR # 306	Seminole	Condominium	\$496,688	2,100	2005	\$7,246
7069 KEY HAVEN RD # 601	Seminole	Condominium	\$496,688	2,100	2006	\$7,314

Address	City	Type	Market Value	Sq Ft	Year	Annual Tax
7069 KEY HAVEN RD # 606	Seminole	Condominium	\$496,688	2,100	2006	\$7,314
10002 KEY HAVEN RD # 501	Seminole	Condominium	\$495,416	2,100	2007	\$7,246
10002 KEY HAVEN RD # 406	Seminole	Condominium	\$495,416	2,100	2007	\$7,387
10002 KEY HAVEN RD # 506	Seminole	Condominium	\$495,416	2,100	2007	\$7,246
10002 KEY HAVEN RD # 401	Seminole	Condominium	\$495,416	2,100	2007	\$7,246
7296 MARATHON DR # 601	Seminole	Condominium	\$491,598	2,100	2005	\$7,290
7296 MARATHON DR # 606	Seminole	Condominium	\$491,598	2,100	2005	\$7,385
11734 RIDGEVIEW LN	Seminole	Condominium	\$491,360	1,705	1984	\$7,233
7040 KEY HAVEN RD # 501	Seminole	Condominium	\$490,962	2,100	2006	\$7,227
10002 KEY HAVEN RD # 306	Seminole	Condominium	\$490,962	2,100	2007	\$7,269
10002 KEY HAVEN RD # 301	Seminole	Condominium	\$490,962	2,100	2007	\$7,179
7040 KEY HAVEN RD # 401	Seminole	Condominium	\$490,962	2,100	2006	\$7,227
7040 KEY HAVEN RD # 406	Seminole	Condominium	\$490,962	2,100	2006	\$7,227
11560 WOODBRIDGE BLVD	Seminole	Condominium	\$486,843	1,705	1983	\$7,195
7040 KEY HAVEN RD # 301	Seminole	Condominium	\$486,190	2,100	2006	\$7,155
10002 KEY HAVEN RD # 206	Seminole	Condominium	\$486,190	2,100	2007	\$7,107
7194 KEY HAVEN RD # 501	Seminole	Condominium	\$486,190	2,100	2005	\$7,203
7070 KEY HAVEN RD # 501	Seminole	Condominium	\$486,190	2,100	2005	\$7,203
7194 KEY HAVEN RD # 406	Seminole	Condominium	\$486,190	2,100	2005	\$7,203
7070 KEY HAVEN RD # 506	Seminole	Condominium	\$486,190	2,100	2005	\$7,203
7070 KEY HAVEN RD # 406	Seminole	Condominium	\$486,190	2,100	2005	\$7,203
10002 KEY HAVEN RD # 201	Seminole	Condominium	\$486,190	2,100	2007	\$7,107
7040 KEY HAVEN RD # 306	Seminole	Condominium	\$486,190	2,100	2006	\$7,155
7194 KEY HAVEN RD # 401	Seminole	Condominium	\$486,190	2,100	2005	\$7,217
7070 KEY HAVEN RD # 401	Seminole	Condominium	\$486,190	2,100	2005	\$7,203

Address	City	Type	Market Value	Sq Ft	Year	Annual Tax
7194 KEY HAVEN RD # 506	Seminole	Condominium	\$486,190	2,100	2005	\$7,203
7069 KEY HAVEN RD # 506	Seminole	Condominium	\$482,372	2,100	2006	\$7,102
7069 KEY HAVEN RD # 406	Seminole	Condominium	\$482,372	2,100	2006	\$7,102
7069 KEY HAVEN RD # 401	Seminole	Condominium	\$482,372	2,100	2006	\$7,102
7069 KEY HAVEN RD # 501	Seminole	Condominium	\$482,372	2,100	2006	\$7,102
7070 KEY HAVEN RD # 301	Seminole	Condominium	\$481,418	2,100	2005	\$7,136
7070 KEY HAVEN RD # 306	Seminole	Condominium	\$481,418	2,100	2005	\$7,272
7296 MARATHON DR # 501	Seminole	Condominium	\$477,283	2,100	2005	\$7,078
7069 KEY HAVEN RD # 306	Seminole	Condominium	\$477,283	2,100	2006	\$7,025
7069 KEY HAVEN RD # 301	Seminole	Condominium	\$477,283	2,100	2006	\$7,025
7296 MARATHON DR # 401	Seminole	Condominium	\$477,283	2,100	2005	\$7,078
7296 MARATHON DR # 506	Seminole	Condominium	\$477,283	2,100	2005	\$7,078
7040 KEY HAVEN RD # 201	Seminole	Condominium	\$472,830	2,100	2006	\$6,957
7040 KEY HAVEN RD # 206	Seminole	Condominium	\$472,830	2,100	2006	\$6,957
7296 MARATHON DR # 301	Seminole	Condominium	\$472,830	2,100	2005	\$7,005
7194 KEY HAVEN RD # 306	Seminole	Condominium	\$472,830	2,100	2005	\$7,005
7069 KEY HAVEN RD # 201	Seminole	Condominium	\$472,830	2,100	2006	\$6,957
7069 KEY HAVEN RD # 206	Seminole	Condominium	\$472,830	2,100	2006	\$6,957
7194 KEY HAVEN RD # 301	Seminole	Condominium	\$472,830	2,100	2005	\$7,005
7070 KEY HAVEN RD # 206	Seminole	Condominium	\$468,376	2,100	2005	\$6,938
7194 KEY HAVEN RD # 206	Seminole	Condominium	\$468,376	2,100	2005	\$7,022
7194 KEY HAVEN RD # 201	Seminole	Condominium	\$468,376	2,100	2005	\$6,938
7296 MARATHON DR # 206	Seminole	Condominium	\$468,376	2,100	2005	\$6,938
7296 MARATHON DR # 201	Seminole	Condominium	\$468,376	2,100	2005	\$6,938
7070 KEY HAVEN RD # 201	Seminole	Condominium	\$468,376	2,100	2005	\$6,938

Address	City	Type	Market Value	Sq Ft	Year	Annual Tax
7296 MARATHON DR # 406	Seminole	Condominium	\$468,058	2,100	2005	\$6,938
7905 SEMINOLE BLVD # 3407	Seminole	Condominium	\$466,321	2,040	2007	\$6,024
7905 SEMINOLE BLVD # 3401	Seminole	Condominium	\$466,321	2,040	2007	\$6,024
11700 PARKVIEW LN	Seminole	Condominium	\$463,463	1,705	1986	\$6,830
7905 SEMINOLE BLVD # 3301	Seminole	Condominium	\$461,995	2,040	2007	\$5,963
7905 SEMINOLE BLVD # 3107	Seminole	Condominium	\$461,995	2,040	2007	\$5,963
7905 SEMINOLE BLVD # 3101	Seminole	Condominium	\$461,995	2,040	2007	\$5,963
7905 SEMINOLE BLVD # 3307	Seminole	Condominium	\$461,995	2,040	2007	\$5,963
7905 SEMINOLE BLVD # 3207	Seminole	Condominium	\$457,668	2,040	2007	\$5,902
6550 SHORELINE DR # 7406	Seminole	Condominium	\$454,024	1,665	2001	\$6,166
11662 WOODBRIDGE BLVD	Seminole	Condominium	\$449,262	1,550	1983	\$6,627
11615 PARKVIEW LN # 50	Seminole	Condominium	\$445,928	1,705	1984	\$6,696
11725 WOODBRIDGE BLVD	Seminole	Condominium	\$445,928	1,705	1984	\$6,696
11675 PARKVIEW LN	Seminole	Condominium	\$445,928	1,705	1985	\$6,696
11674 WOODBRIDGE BLVD	Seminole	Condominium	\$445,928	1,705	1983	\$6,696
11704 PARKVIEW LN	Seminole	Condominium	\$445,928	1,705	1986	\$6,696
11715 RIDGEVIEW LN	Seminole	Condominium	\$444,228	1,705	1984	\$6,666
11660 WOODBRIDGE BLVD	Seminole	Condominium	\$444,228	1,705	1983	\$6,666
11564 WOODBRIDGE BLVD	Seminole	Condominium	\$444,228	1,705	1983	\$6,666
11553 WOODBRIDGE BLVD	Seminole	Condominium	\$441,412	1,705	1983	\$6,504
11613 PARKVIEW LN	Seminole	Condominium	\$438,634	1,550	1984	\$6,592
6495 SHORELINE DR # 8306	Seminole	Condominium	\$437,630	1,665	2002	\$5,845
11730 RIDGEVIEW LN	Seminole	Condominium	\$437,160	1,705	1984	\$6,566
11714 PARKVIEW LN	Seminole	Condominium	\$437,160	1,705	1986	\$6,566
11685 PARKVIEW LN	Seminole	Condominium	\$437,160	1,705	1985	\$6,566

Address	City	Type	Market Value	Sq Ft	Year	Annual Tax
11611 PARKVIEW LN	Seminole	Condominium	\$437,160	1,705	1984	\$6,566
11711 RIDGEVIEW LN	Seminole	Condominium	\$437,160	1,705	1984	\$6,566
11679 PARKVIEW LN	Seminole	Condominium	\$437,160	1,705	1985	\$6,566
7905 SEMINOLE BLVD # 3405	Seminole	Condominium	\$436,867	1,880	2007	\$5,634
7905 SEMINOLE BLVD # 3403	Seminole	Condominium	\$436,867	1,880	2007	\$5,634
10002 KEY HAVEN RD # 602	Seminole	Condominium	\$436,140	1,700	2007	\$6,375
10002 KEY HAVEN RD # 605	Seminole	Condominium	\$436,140	1,700	2007	\$6,375
11664 WOODBRIDGE BLVD	Seminole	Condominium	\$435,460	1,705	1983	\$6,537
6450 SHORELINE DR # 9206	Seminole	Condominium	\$433,594	1,665	2001	\$5,887
6450 SHORELINE DR # 9201	Seminole	Condominium	\$433,594	1,665	2001	\$5,887
7040 KEY HAVEN RD # 302	Seminole	Condominium	\$433,307	1,700	2006	\$6,301
7905 SEMINOLE BLVD # 3303	Seminole	Condominium	\$432,595	1,880	2007	\$5,582
7905 SEMINOLE BLVD # 3305	Seminole	Condominium	\$432,595	1,880	2007	\$5,582
7040 KEY HAVEN RD # 605	Seminole	Condominium	\$431,762	1,700	2006	\$6,360
7040 KEY HAVEN RD # 602	Seminole	Condominium	\$431,762	1,700	2006	\$6,360
7905 SEMINOLE BLVD # 3402	Seminole	Condominium	\$431,401	2,040	2007	\$5,565
11551 WOODBRIDGE BLVD	Seminole	Condominium	\$431,146	1,550	1983	\$6,365
11601 PARKVIEW LN	Seminole	Condominium	\$428,924	1,705	1984	\$6,447
11690 PARKVIEW LN # 64	Seminole	Condominium	\$428,924	1,705	1986	\$6,447
7194 KEY HAVEN RD # 605	Seminole	Condominium	\$427,642	1,700	2005	\$6,332
7070 KEY HAVEN RD # 605	Seminole	Condominium	\$427,642	1,700	2005	\$6,332
7194 KEY HAVEN RD # 602	Seminole	Condominium	\$427,642	1,700	2005	\$6,332
7070 KEY HAVEN RD # 602	Seminole	Condominium	\$427,642	1,700	2005	\$6,332
11701 RIDGEVIEW LN	Seminole	Condominium	\$427,224	1,705	1984	\$6,417
7905 SEMINOLE BLVD # 3302	Seminole	Condominium	\$426,765	2,040	2007	\$5,508

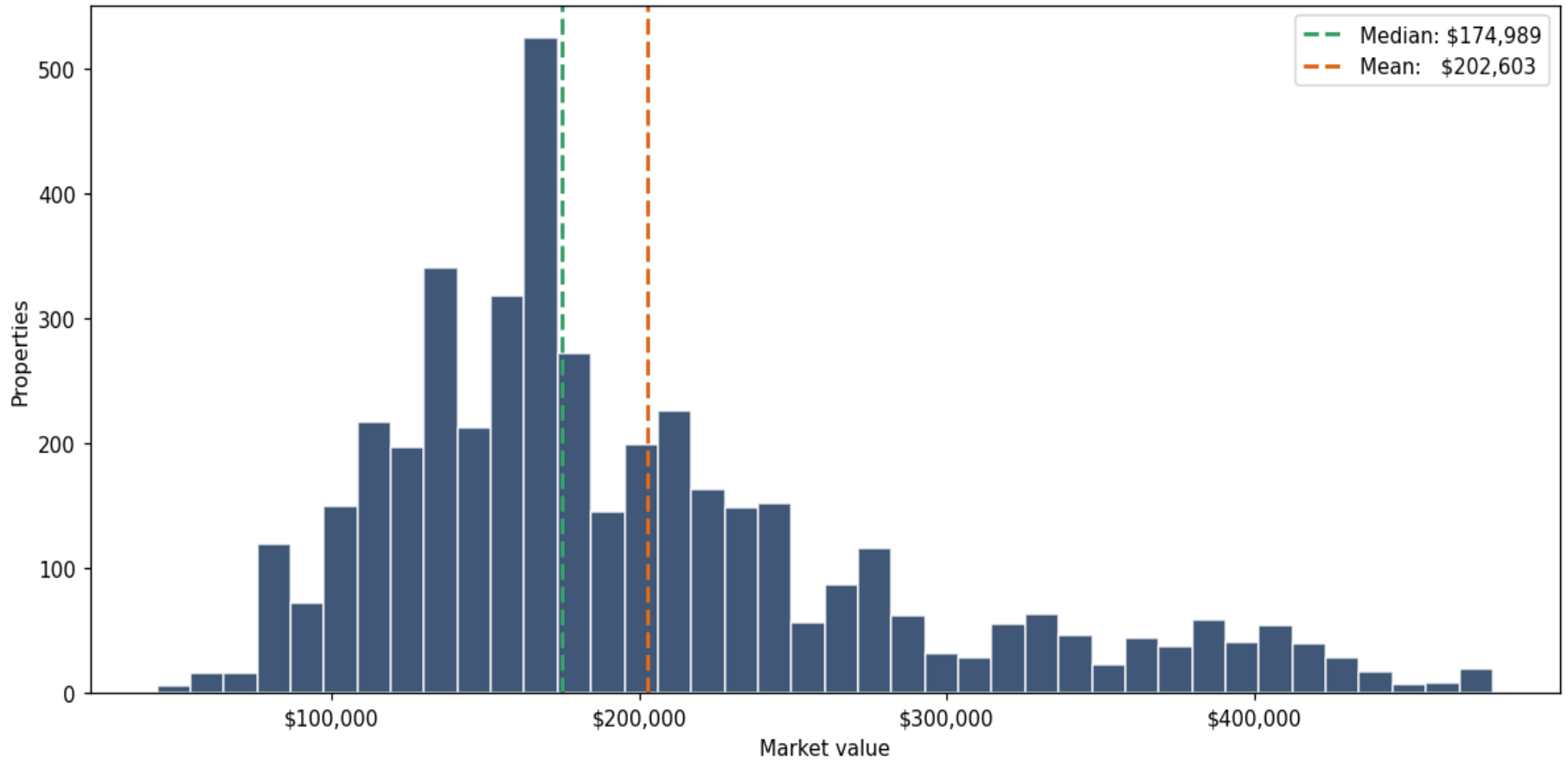
Address	City	Type	Market Value	Sq Ft	Year	Annual Tax
7905 SEMINOLE BLVD # 3102	Seminole	Condominium	\$426,765	2,040	2007	\$5,508
7903 SEMINOLE BLVD # 2408	Seminole	Condominium	\$426,765	2,040	2006	\$5,550
7069 KEY HAVEN RD # 602	Seminole	Condominium	\$424,036	1,700	2006	\$6,246
7069 KEY HAVEN RD # 605	Seminole	Condominium	\$424,036	1,700	2006	\$6,246
10002 KEY HAVEN RD # 405	Seminole	Condominium	\$423,263	1,700	2007	\$6,192
10002 KEY HAVEN RD # 505	Seminole	Condominium	\$423,263	1,700	2007	\$6,192
10002 KEY HAVEN RD # 502	Seminole	Condominium	\$423,263	1,700	2007	\$6,192
10002 KEY HAVEN RD # 402	Seminole	Condominium	\$423,263	1,700	2007	\$6,192
7903 SEMINOLE BLVD # 2308	Seminole	Condominium	\$423,058	2,040	2006	\$5,494
7905 SEMINOLE BLVD # 3202	Seminole	Condominium	\$423,058	2,040	2007	\$5,452
7903 SEMINOLE BLVD # 2108	Seminole	Condominium	\$423,058	2,040	2006	\$5,494
6495 SHORELINE DR # 8506	Seminole	Condominium	\$421,992	1,665	2002	\$5,734
11605 PARKVIEW LN	Seminole	Condominium	\$420,422	1,705	1984	\$6,322
11670 WOODBRIDGE BLVD	Seminole	Condominium	\$420,422	1,705	1983	\$6,322
11694 PARKVIEW LN # 66	Seminole	Condominium	\$420,422	1,705	1986	\$6,322
11602 PARKVIEW LN	Seminole	Condominium	\$420,422	1,705	1986	\$6,322
11554 WOODBRIDGE BLVD	Seminole	Condominium	\$420,422	1,705	1983	\$6,322
7296 MARATHON DR # 602	Seminole	Condominium	\$420,174	1,700	2005	\$6,219
7296 MARATHON DR # 605	Seminole	Condominium	\$420,174	1,700	2005	\$6,266
11689 PARKVIEW LN	Seminole	Condominium	\$420,157	1,705	1985	\$6,322
11720 RIDGEVIEW LN	Seminole	Condominium	\$420,157	1,705	1984	\$6,322
10002 KEY HAVEN RD # 302	Seminole	Condominium	\$419,401	1,700	2007	\$6,129
7040 KEY HAVEN RD # 402	Seminole	Condominium	\$419,401	1,700	2006	\$6,176
10002 KEY HAVEN RD # 305	Seminole	Condominium	\$419,401	1,700	2007	\$6,174
7040 KEY HAVEN RD # 502	Seminole	Condominium	\$419,401	1,700	2006	\$6,176

Address	City	Type	Market Value	Sq Ft	Year	Annual Tax
7040 KEY HAVEN RD # 505	Seminole	Condominium	\$419,401	1,700	2006	\$6,176
7040 KEY HAVEN RD # 405	Seminole	Condominium	\$419,401	1,700	2006	\$6,176
7903 SEMINOLE BLVD # 2208	Seminole	Condominium	\$419,040	2,040	2006	\$5,443
6315 SHORELINE DR # 3204	Seminole	Condominium	\$418,739	1,595	1996	\$5,695
11559 WOODBRIDGE BLVD	Seminole	Condominium	\$418,722	1,705	1983	\$6,292
11724 RIDGEVIEW LN	Seminole	Condominium	\$418,722	1,705	1984	\$6,292
11550 WOODBRIDGE BLVD	Seminole	Condominium	\$418,457	1,705	1983	\$6,292
11728 RIDGEVIEW LN	Seminole	Condominium	\$417,620	1,550	1984	\$6,191
7040 KEY HAVEN RD # 504	Seminole	Condominium	\$417,068	1,500	2006	\$6,066
7903 SEMINOLE BLVD # 2407	Seminole	Condominium	\$416,259	2,040	2006	\$5,340
7194 KEY HAVEN RD # 502	Seminole	Condominium	\$415,280	1,700	2005	\$6,153
10002 KEY HAVEN RD # 202	Seminole	Condominium	\$415,280	1,700	2007	\$6,071
7194 KEY HAVEN RD # 405	Seminole	Condominium	\$415,280	1,700	2005	\$6,364
7194 KEY HAVEN RD # 505	Seminole	Condominium	\$415,280	1,700	2005	\$6,153
10002 KEY HAVEN RD # 205	Seminole	Condominium	\$415,280	1,700	2007	\$6,071
7070 KEY HAVEN RD # 505	Seminole	Condominium	\$415,280	1,700	2005	\$6,153
7194 KEY HAVEN RD # 402	Seminole	Condominium	\$415,280	1,700	2005	\$6,153
7040 KEY HAVEN RD # 305	Seminole	Condominium	\$415,280	1,700	2006	\$6,114
7070 KEY HAVEN RD # 502	Seminole	Condominium	\$415,280	1,700	2005	\$6,153
7070 KEY HAVEN RD # 405	Seminole	Condominium	\$415,280	1,700	2005	\$6,153
7070 KEY HAVEN RD # 402	Seminole	Condominium	\$415,280	1,700	2005	\$6,153
11710 PARKVIEW LN	Seminole	Condominium	\$413,514	1,550	1986	\$6,226
7905 SEMINOLE BLVD # 3103	Seminole	Condominium	\$413,017	1,730	2007	\$5,327
7905 SEMINOLE BLVD # 3105	Seminole	Condominium	\$413,017	1,730	2007	\$5,327
7040 KEY HAVEN RD # 304	Seminole	Condominium	\$412,978	1,500	2006	\$6,008

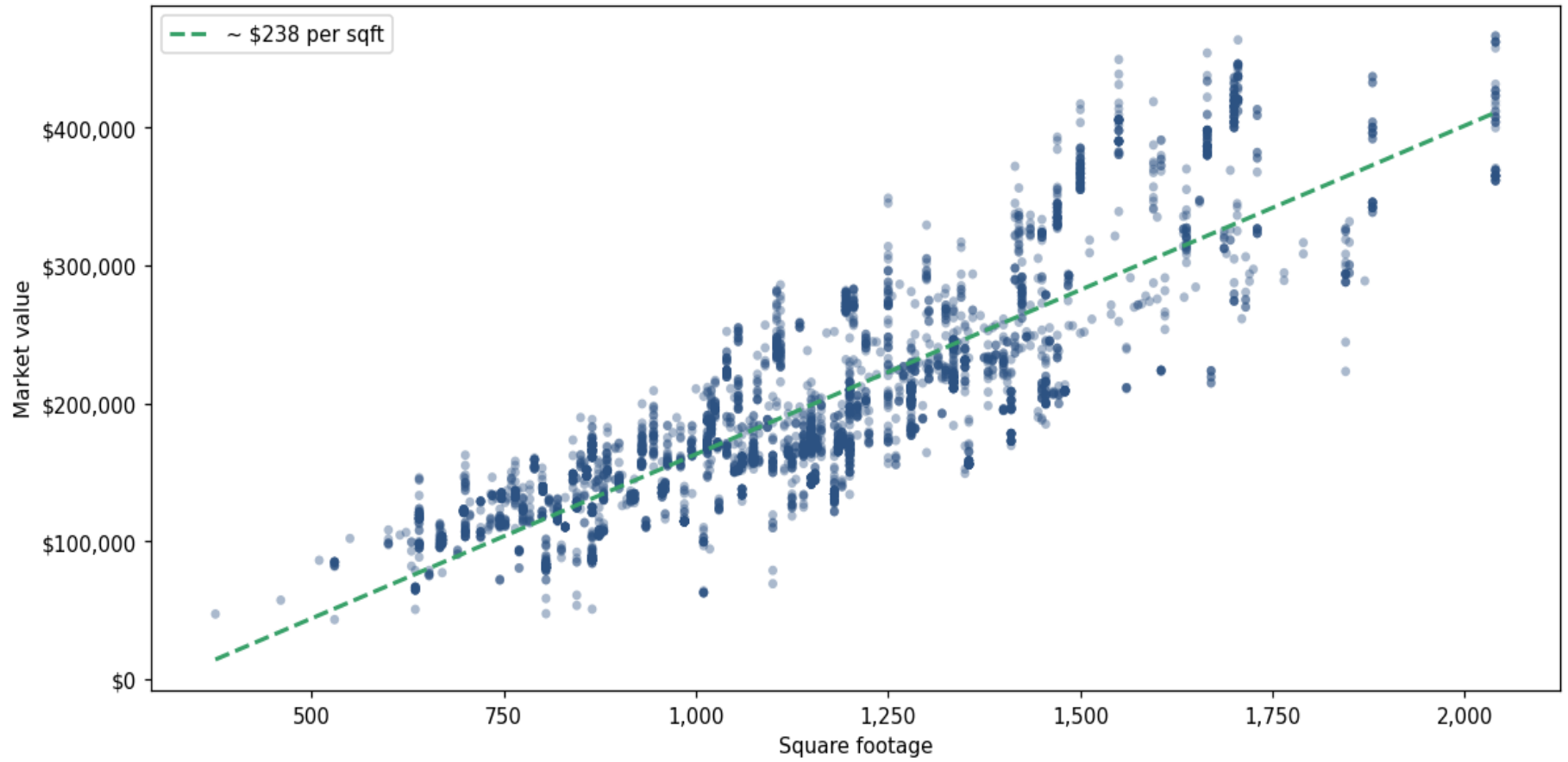
Address	City	Type	Market Value	Sq Ft	Year	Annual Tax
7069 KEY HAVEN RD # 402	Seminole	Condominium	\$411,933	1,700	2006	\$6,067
7069 KEY HAVEN RD # 505	Seminole	Condominium	\$411,933	1,700	2006	\$6,067
7069 KEY HAVEN RD # 405	Seminole	Condominium	\$411,933	1,700	2006	\$6,067
7069 KEY HAVEN RD # 502	Seminole	Condominium	\$411,933	1,700	2006	\$6,067
7903 SEMINOLE BLVD # 2107	Seminole	Condominium	\$411,932	2,040	2006	\$5,288
11705 RIDGEVIEW LN # 25	Seminole	Condominium	\$411,920	1,705	1984	\$6,202
11718 PARKVIEW LN	Seminole	Condominium	\$411,920	1,705	1986	\$6,202
7905 SEMINOLE BLVD # 3408	Seminole	Condominium	\$411,624	2,040	2007	\$5,311
7070 KEY HAVEN RD # 302	Seminole	Condominium	\$411,160	1,700	2005	\$6,090
7070 KEY HAVEN RD # 305	Seminole	Condominium	\$411,160	1,700	2005	\$6,254
6450 SHORELINE DR # 9506	Seminole	Condominium	\$409,381	1,665	2001	\$5,585
6495 SHORELINE DR # 8406	Seminole	Condominium	\$409,381	1,665	2002	\$5,762
11668 WOODBRIDGE BLVD	Seminole	Condominium	\$409,167	1,550	1983	\$6,047
7905 SEMINOLE BLVD # 3203	Seminole	Condominium	\$408,824	1,730	2007	\$5,276
7905 SEMINOLE BLVD # 3205	Seminole	Condominium	\$408,824	1,730	2007	\$5,276
7296 MARATHON DR # 402	Seminole	Condominium	\$407,812	1,700	2005	\$6,043
7069 KEY HAVEN RD # 302	Seminole	Condominium	\$407,812	1,700	2006	\$6,004
7296 MARATHON DR # 502	Seminole	Condominium	\$407,812	1,700	2005	\$6,043
7069 KEY HAVEN RD # 305	Seminole	Condominium	\$407,812	1,700	2006	\$6,004
7296 MARATHON DR # 505	Seminole	Condominium	\$407,812	1,700	2005	\$6,043
7296 MARATHON DR # 405	Seminole	Condominium	\$407,812	1,700	2005	\$6,043
7903 SEMINOLE BLVD # 2402	Seminole	Condominium	\$407,606	2,040	2006	\$5,297
7905 SEMINOLE BLVD # 3108	Seminole	Condominium	\$407,606	2,040	2007	\$5,260
7905 SEMINOLE BLVD # 3308	Seminole	Condominium	\$407,606	2,040	2007	\$5,260
11702 PARKVIEW LN	Seminole	Condominium	\$405,544	1,550	1986	\$6,104

Address	City	Type	Market Value	Sq Ft	Year	Annual Tax
11732 RIDGEVIEW LN	Seminole	Condominium	\$405,544	1,550	1984	\$6,104
11666 WOODBRIDGE BLVD	Seminole	Condominium	\$405,544	1,550	1983	\$6,104
11683 PARKVIEW LN	Seminole	Condominium	\$405,544	1,550	1985	\$6,104
11558 WOODBRIDGE BLVD # 11	Seminole	Condominium	\$405,544	1,550	1983	\$6,104
11672 WOODBRIDGE BLVD	Seminole	Condominium	\$405,544	1,550	1983	\$6,104
11723 WOODBRIDGE BLVD	Seminole	Condominium	\$405,544	1,550	1984	\$6,104
11562 WOODBRIDGE BLVD	Seminole	Condominium	\$405,544	1,550	1983	\$6,104
11681 PARKVIEW LN	Seminole	Condominium	\$405,544	1,550	1985	\$6,104
11609 PARKVIEW LN # 53	Seminole	Condominium	\$405,544	1,550	1984	\$6,104
11677 PARKVIEW LN	Seminole	Condominium	\$405,544	1,550	1985	\$6,104
11712 PARKVIEW LN	Seminole	Condominium	\$405,544	1,550	1986	\$6,104
11709 RIDGEVIEW LN # 27	Seminole	Condominium	\$405,544	1,550	1984	\$6,104

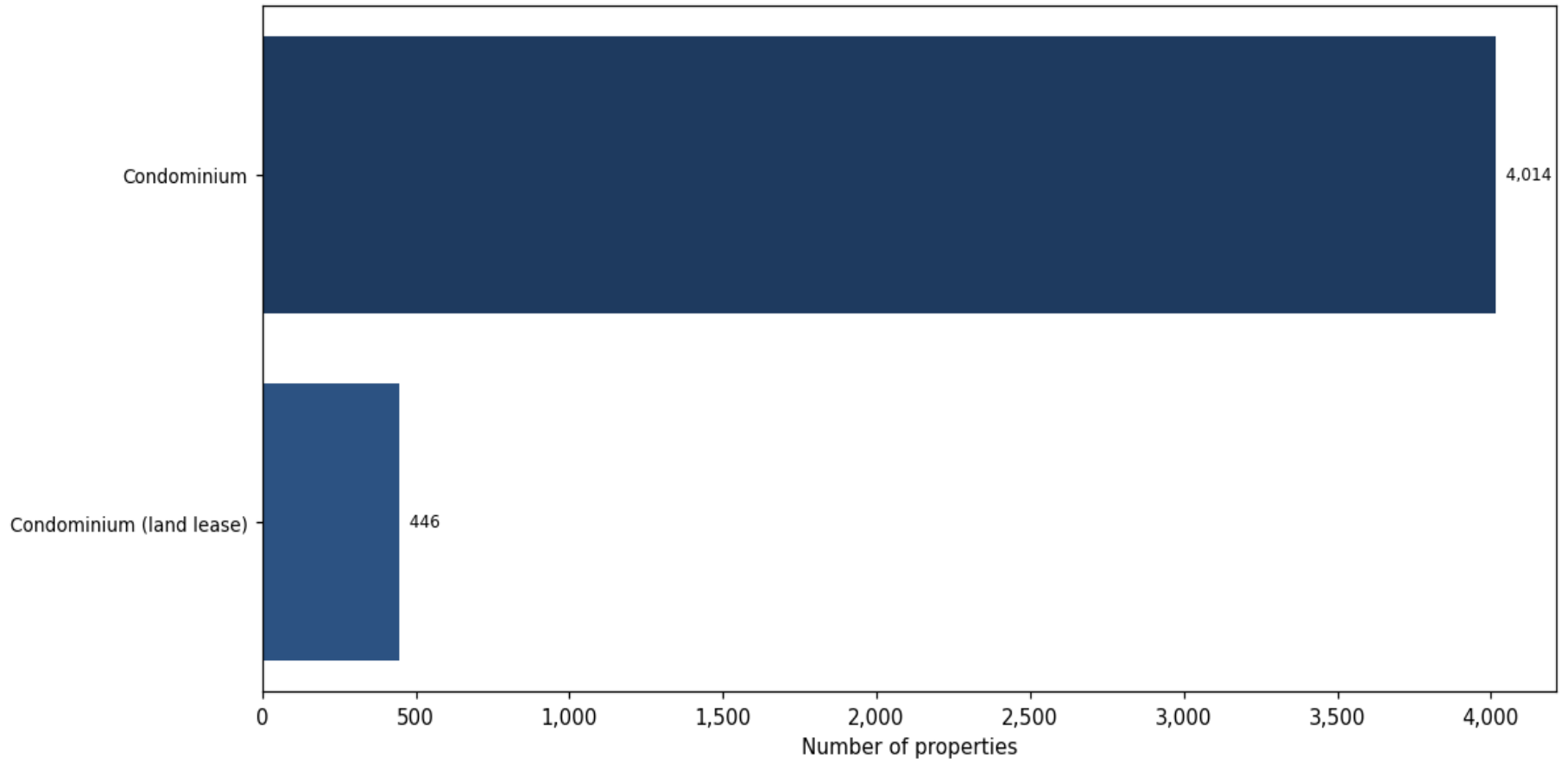
**Market value distribution (n=4,460, top 1% trimmed for readability)**



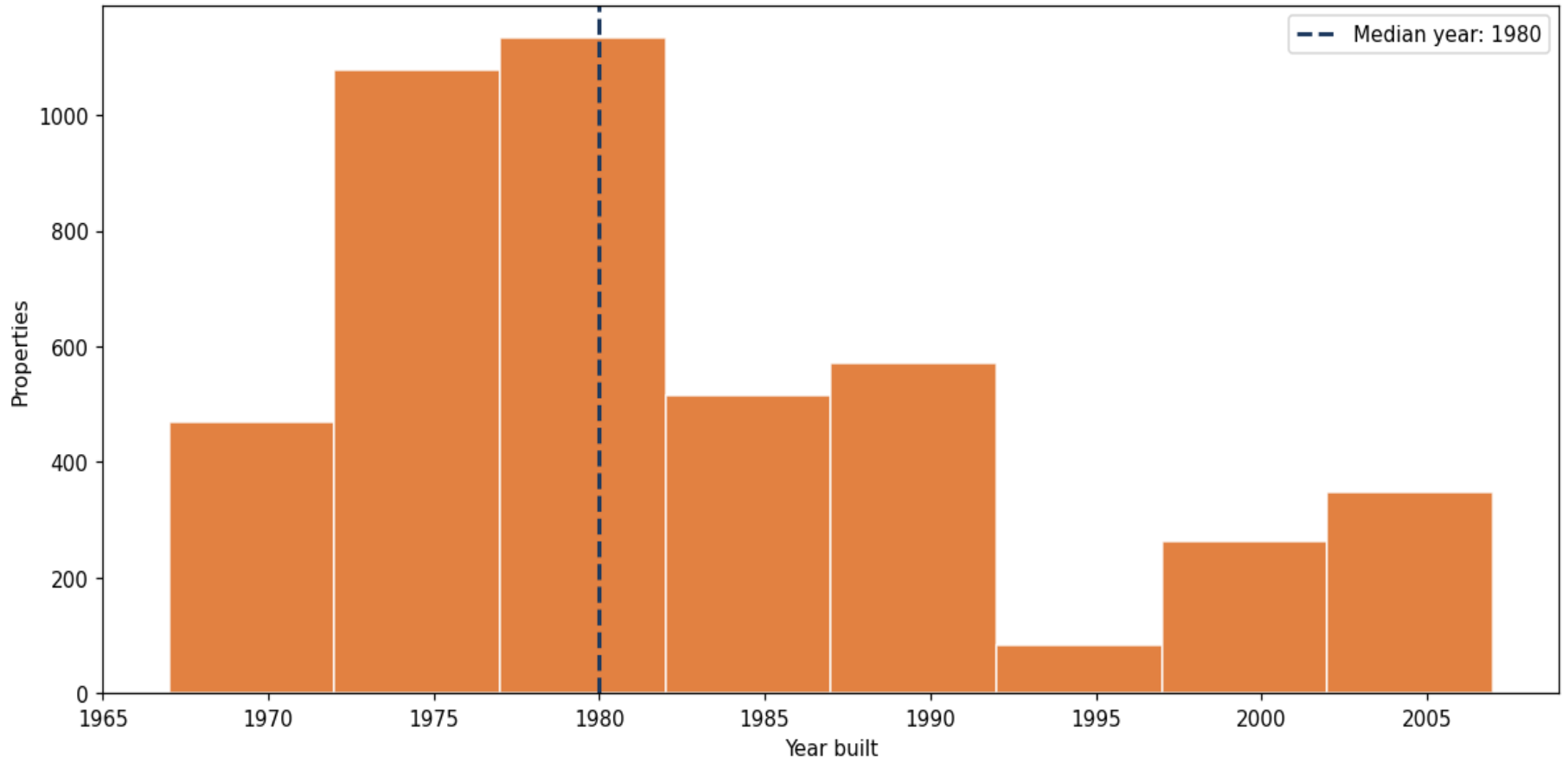
**Building size vs. market value (n=4,390, outliers trimmed)**



### Top property types by count



**Year built distribution (5-year buckets)**



**Market value vs. assessed value (gap = untaxed appreciation)**

