

Pinellas Property Market Report

689 matching properties • May 30, 2026

Filters applied	Headline numbers
City: Safety Harbor	Properties matched: 689
Property type: Condominium	Median market value: \$234,282
	Mean market value: \$288,711
	Min / Max: \$151,299 / \$1,144,183
	Mean square footage: 1,166

Top 200 properties by market value

Address	City	Type	Market Value	Sq Ft	Year	Annual Tax
101 BAYSHORE BLVD S # 79	Safety Harbor	Condominium	\$1,144,183	2,056	2019	\$19,928
101 BAYSHORE BLVD S # 71	Safety Harbor	Condominium	\$1,144,183	2,056	2019	\$20,021
101 BAYSHORE BLVD S # 61	Safety Harbor	Condominium	\$1,123,966	2,056	2019	\$19,669
101 BAYSHORE BLVD S # 69	Safety Harbor	Condominium	\$1,123,966	2,056	2019	\$19,576
101 BAYSHORE BLVD S # 59	Safety Harbor	Condominium	\$1,103,041	2,056	2019	\$19,304
101 BAYSHORE BLVD S # 51	Safety Harbor	Condominium	\$1,103,041	2,056	2019	\$19,353
101 BAYSHORE BLVD S # 39	Safety Harbor	Condominium	\$1,039,553	2,056	2019	\$18,106
101 BAYSHORE BLVD S # 31	Safety Harbor	Condominium	\$1,039,553	2,056	2019	\$18,106
101 BAYSHORE BLVD S # 41	Safety Harbor	Condominium	\$1,029,268	2,056	2019	\$17,927
101 BAYSHORE BLVD S # 49	Safety Harbor	Condominium	\$1,029,268	2,056	2019	\$17,927
101 BAYSHORE BLVD S # 73	Safety Harbor	Condominium	\$863,940	1,567	2019	\$15,222
101 BAYSHORE BLVD S # 77	Safety Harbor	Condominium	\$863,940	1,567	2019	\$15,225
101 BAYSHORE BLVD S # 76	Safety Harbor	Condominium	\$863,940	1,567	2019	\$15,047

Address	City	Type	Market Value	Sq Ft	Year	Annual Tax
101 BAYSHORE BLVD S # 74	Safety Harbor	Condominium	\$863,940	1,567	2019	\$15,047
101 BAYSHORE BLVD S # 66	Safety Harbor	Condominium	\$847,991	1,567	2019	\$14,770
101 BAYSHORE BLVD S # 63	Safety Harbor	Condominium	\$847,991	1,567	2019	\$14,966
101 BAYSHORE BLVD S # 67	Safety Harbor	Condominium	\$847,991	1,567	2019	\$14,770
101 BAYSHORE BLVD S # 64	Safety Harbor	Condominium	\$847,991	1,567	2019	\$14,770
101 BAYSHORE BLVD S # 54	Safety Harbor	Condominium	\$835,713	1,567	2019	\$14,556
101 BAYSHORE BLVD S # 53	Safety Harbor	Condominium	\$832,313	1,567	2019	\$14,497
101 BAYSHORE BLVD S # 57	Safety Harbor	Condominium	\$832,313	1,567	2019	\$14,497
101 BAYSHORE BLVD S # 56	Safety Harbor	Condominium	\$832,313	1,567	2019	\$14,497
101 BAYSHORE BLVD S # 37	Safety Harbor	Condominium	\$787,287	1,567	2019	\$13,712
101 BAYSHORE BLVD S # 33	Safety Harbor	Condominium	\$784,737	1,567	2019	\$13,668
101 BAYSHORE BLVD S # 34	Safety Harbor	Condominium	\$784,737	1,567	2019	\$13,668
101 BAYSHORE BLVD S # 36	Safety Harbor	Condominium	\$784,737	1,567	2019	\$13,668
101 BAYSHORE BLVD S # 46	Safety Harbor	Condominium	\$776,897	1,567	2019	\$13,531
101 BAYSHORE BLVD S # 47	Safety Harbor	Condominium	\$776,897	1,567	2019	\$13,531
101 BAYSHORE BLVD S # 43	Safety Harbor	Condominium	\$776,897	1,567	2019	\$13,531
101 BAYSHORE BLVD S # 44	Safety Harbor	Condominium	\$776,897	1,567	2019	\$13,531
101 BAYSHORE BLVD S # 75	Safety Harbor	Condominium	\$747,085	1,343	2019	\$13,159
101 BAYSHORE BLVD S # 72	Safety Harbor	Condominium	\$747,085	1,343	2019	\$13,110
101 BAYSHORE BLVD S # 78	Safety Harbor	Condominium	\$743,685	1,343	2019	\$12,953
101 BAYSHORE BLVD S # 65	Safety Harbor	Condominium	\$730,016	1,343	2019	\$12,715
101 BAYSHORE BLVD S # 62	Safety Harbor	Condominium	\$730,016	1,343	2019	\$12,715
101 BAYSHORE BLVD S # 68	Safety Harbor	Condominium	\$730,016	1,343	2019	\$12,715
101 BAYSHORE BLVD S # 58	Safety Harbor	Condominium	\$716,116	1,343	2019	\$12,593
101 BAYSHORE BLVD S # 55	Safety Harbor	Condominium	\$716,116	1,343	2019	\$12,473

Address	City	Type	Market Value	Sq Ft	Year	Annual Tax
101 BAYSHORE BLVD S # 52	Safety Harbor	Condominium	\$716,116	1,343	2019	\$12,532
101 BAYSHORE BLVD S # 38	Safety Harbor	Condominium	\$678,972	1,343	2019	\$11,826
101 BAYSHORE BLVD S # 32	Safety Harbor	Condominium	\$675,572	1,343	2019	\$11,767
101 BAYSHORE BLVD S # 35	Safety Harbor	Condominium	\$675,572	1,343	2019	\$11,813
101 BAYSHORE BLVD S # 48	Safety Harbor	Condominium	\$672,021	1,343	2019	\$11,705
101 BAYSHORE BLVD S # 42	Safety Harbor	Condominium	\$668,621	1,343	2019	\$11,646
101 BAYSHORE BLVD S # 45	Safety Harbor	Condominium	\$668,621	1,343	2019	\$11,738
231 2ND ST S # 302	Safety Harbor	Condominium	\$585,942	1,740	2022	\$10,205
231 2ND ST S # 202	Safety Harbor	Condominium	\$580,239	1,740	2022	\$10,106
231 2ND ST S # 402	Safety Harbor	Condominium	\$580,239	1,740	2022	\$10,106
231 2ND ST S # 301	Safety Harbor	Condominium	\$566,311	1,550	2022	\$9,864
231 2ND ST S # 201	Safety Harbor	Condominium	\$560,428	1,550	2022	\$9,761
231 2ND ST S # 401	Safety Harbor	Condominium	\$560,428	1,550	2022	\$9,761
609 QUAIL KEEP DR	Safety Harbor	Condominium	\$531,400	1,974	1988	\$7,244
619 QUAIL KEEP DR	Safety Harbor	Condominium	\$530,229	1,974	1987	\$7,232
611 QUAIL KEEP DR	Safety Harbor	Condominium	\$528,444	1,974	1987	\$7,199
606 QUAIL KEEP DR	Safety Harbor	Condominium	\$521,251	1,974	1988	\$7,104
622 QUAIL KEEP DR	Safety Harbor	Condominium	\$509,558	1,974	1987	\$6,951
1211 HOUNDS RUN	Safety Harbor	Condominium	\$509,558	1,974	1987	\$6,951
1208 HOUNDS RUN	Safety Harbor	Condominium	\$450,662	1,521	1987	\$6,138
231 2ND ST S # 304	Safety Harbor	Condominium	\$433,526	1,265	2022	\$7,550
231 2ND ST S # 303	Safety Harbor	Condominium	\$433,064	1,270	2022	\$7,543
231 2ND ST S # 404	Safety Harbor	Condominium	\$428,943	1,265	2022	\$7,471
231 2ND ST S # 204	Safety Harbor	Condominium	\$428,943	1,265	2022	\$7,471
601 QUAIL KEEP DR	Safety Harbor	Condominium	\$428,606	1,521	1989	\$5,835

Address	City	Type	Market Value	Sq Ft	Year	Annual Tax
231 2ND ST S # 203	Safety Harbor	Condominium	\$428,464	1,270	2022	\$7,463
231 2ND ST S # 403	Safety Harbor	Condominium	\$428,464	1,270	2022	\$7,463
625 QUAIL KEEP DR	Safety Harbor	Condominium	\$427,258	1,375	1987	\$5,815
1203 HOUNDS RUN	Safety Harbor	Condominium	\$417,047	1,375	1987	\$5,681
1200 HOUNDS RUN	Safety Harbor	Condominium	\$412,597	1,375	1987	\$5,607
1210 HOUNDS RUN	Safety Harbor	Condominium	\$410,650	1,521	1987	\$5,596
624 QUAIL KEEP DR	Safety Harbor	Condominium	\$410,650	1,521	1987	\$5,596
603 QUAIL KEEP DR	Safety Harbor	Condominium	\$408,044	1,521	1989	\$5,560
605 QUAIL KEEP DR	Safety Harbor	Condominium	\$408,044	1,521	1989	\$5,610
607 QUAIL KEEP DR	Safety Harbor	Condominium	\$408,044	1,521	1989	\$5,560
623 QUAIL KEEP DR	Safety Harbor	Condominium	\$406,596	1,521	1987	\$5,537
621 QUAIL KEEP DR	Safety Harbor	Condominium	\$406,596	1,521	1987	\$5,537
723 QUAIL KEEP DR	Safety Harbor	Condominium	\$404,153	1,325	1990	\$5,499
626 QUAIL KEEP DR	Safety Harbor	Condominium	\$402,542	1,521	1987	\$5,483
1206 HOUNDS RUN	Safety Harbor	Condominium	\$402,542	1,521	1987	\$5,483
1204 HOUNDS RUN	Safety Harbor	Condominium	\$402,542	1,521	1987	\$5,483
1202 HOUNDS RUN	Safety Harbor	Condominium	\$402,542	1,521	1987	\$5,483
632 QUAIL KEEP DR	Safety Harbor	Condominium	\$402,542	1,521	1987	\$5,483
712 EARLS CT	Safety Harbor	Condominium	\$400,726	1,350	1994	\$5,454
616 QUAIL KEEP DR	Safety Harbor	Condominium	\$398,777	1,521	1987	\$5,429
716 QUAIL KEEP DR	Safety Harbor	Condominium	\$397,441	1,400	1994	\$5,410
641 QUAIL KEEP DR	Safety Harbor	Condominium	\$395,842	1,400	1995	\$5,385
627 QUAIL KEEP DR	Safety Harbor	Condominium	\$395,842	1,400	1995	\$5,385
722 EARLS CT	Safety Harbor	Condominium	\$391,310	1,400	1994	\$5,327
1205 HOUNDS RUN	Safety Harbor	Condominium	\$390,668	1,521	1987	\$5,974

Address	City	Type	Market Value	Sq Ft	Year	Annual Tax
610 QUAIL KEEP DR	Safety Harbor	Condominium	\$390,668	1,521	1987	\$5,321
1209 HOUNDS RUN # 1704	Safety Harbor	Condominium	\$390,668	1,521	1987	\$5,321
620 QUAIL KEEP DR	Safety Harbor	Condominium	\$390,668	1,521	1987	\$5,321
612 QUAIL KEEP DR	Safety Harbor	Condominium	\$390,668	1,521	1987	\$5,321
631 QUAIL KEEP DR	Safety Harbor	Condominium	\$385,560	1,350	1995	\$5,194
720 EARLS CT	Safety Harbor	Condominium	\$385,303	1,350	1994	\$5,238
617 QUAIL KEEP DR	Safety Harbor	Condominium	\$383,799	1,375	1987	\$5,225
634 QUAIL KEEP DR	Safety Harbor	Condominium	\$380,134	1,375	1987	\$5,176
710 QUAIL KEEP DR	Safety Harbor	Condominium	\$380,115	1,400	1994	\$5,174
710 EARLS CT # 21	Safety Harbor	Condominium	\$380,115	1,400	1994	\$5,174
608 QUAIL KEEP DR	Safety Harbor	Condominium	\$372,803	1,375	1987	\$5,078
411 S BAYSHORE BLVD # 5	Safety Harbor	Condominium	\$372,301	1,197	1980	\$6,481
629 QUAIL KEEP DR	Safety Harbor	Condominium	\$372,194	1,350	1995	\$5,066
639 QUAIL KEEP DR	Safety Harbor	Condominium	\$372,194	1,350	1995	\$5,066
637 QUAIL KEEP DR	Safety Harbor	Condominium	\$372,194	1,350	1995	\$5,066
635 QUAIL KEEP DR	Safety Harbor	Condominium	\$372,194	1,350	1995	\$5,066
633 QUAIL KEEP DR	Safety Harbor	Condominium	\$372,194	1,350	1995	\$5,066
411 S BAYSHORE BLVD # 2	Safety Harbor	Condominium	\$370,929	1,197	1980	\$6,461
600 QUAIL KEEP DR	Safety Harbor	Condominium	\$369,662	1,375	1988	\$5,037
614 QUAIL KEEP DR	Safety Harbor	Condominium	\$369,138	1,375	1987	\$5,226
733 QUAIL KEEP DR	Safety Harbor	Condominium	\$369,085	1,325	1989	\$5,032
604 QUAIL KEEP DR	Safety Harbor	Condominium	\$368,911	1,284	1988	\$5,025
716 EARLS CT	Safety Harbor	Condominium	\$368,338	1,350	1994	\$5,014
714 EARLS CT	Safety Harbor	Condominium	\$368,338	1,350	1994	\$5,014
718 EARLS CT	Safety Harbor	Condominium	\$368,338	1,350	1994	\$5,014

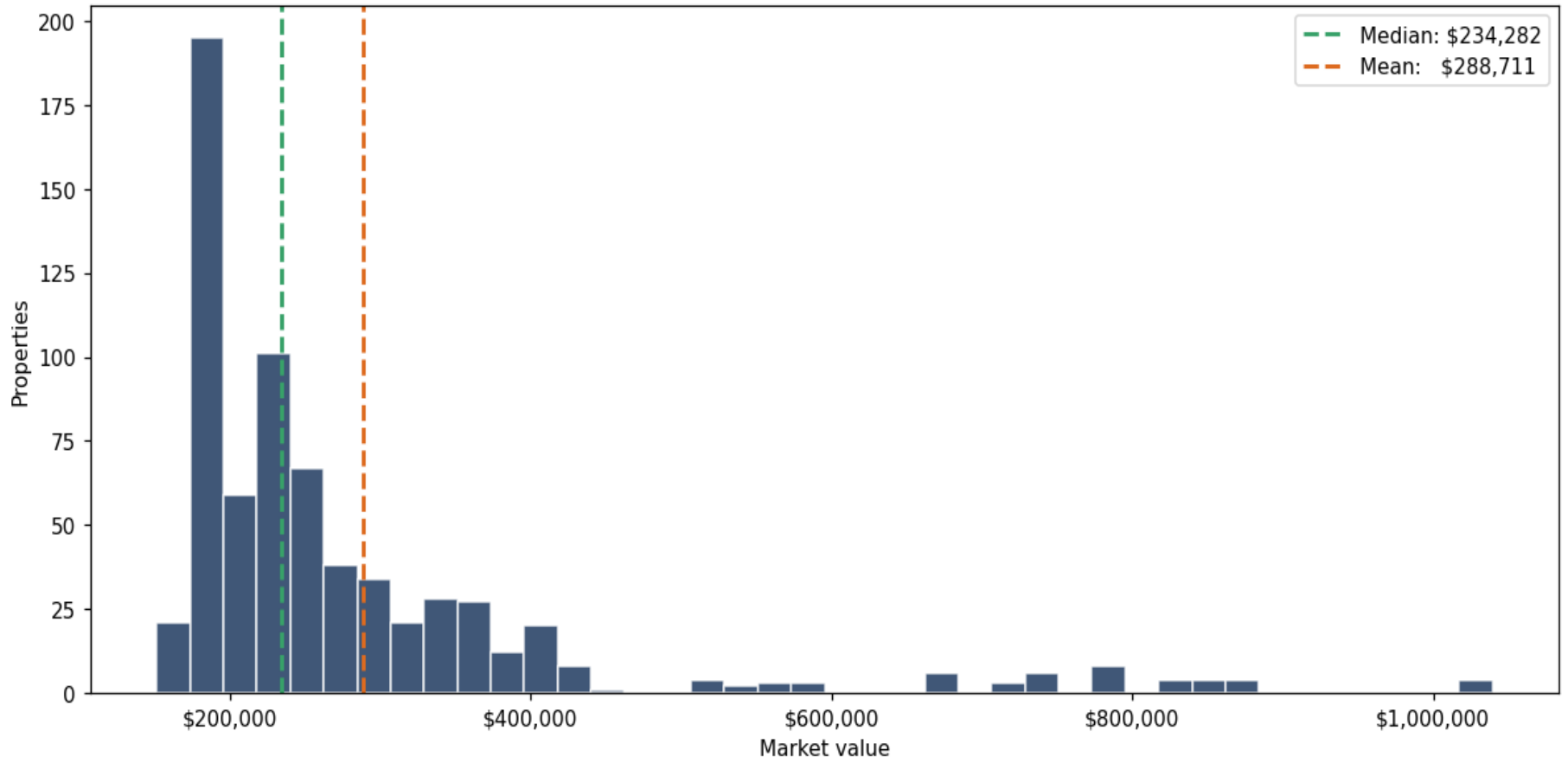
Address	City	Type	Market Value	Sq Ft	Year	Annual Tax
712 QUAIL KEEP DR	Safety Harbor	Condominium	\$363,197	1,350	1994	\$4,946
739 QUAIL KEEP DR	Safety Harbor	Condominium	\$363,069	1,125	1989	\$4,943
725 QUAIL KEEP DR	Safety Harbor	Condominium	\$362,527	1,325	1990	\$4,941
719 QUAIL KEEP DR	Safety Harbor	Condominium	\$362,527	1,325	1990	\$4,941
721 QUAIL KEEP DR	Safety Harbor	Condominium	\$362,527	1,325	1990	\$4,941
737 QUAIL KEEP DR	Safety Harbor	Condominium	\$362,022	1,325	1989	\$4,934
731 QUAIL KEEP DR	Safety Harbor	Condominium	\$362,022	1,325	1989	\$4,934
714 QUAIL KEEP DR	Safety Harbor	Condominium	\$359,599	1,350	1994	\$4,898
613 QUAIL KEEP DR	Safety Harbor	Condominium	\$357,665	1,284	1987	\$4,873
708 QUAIL KEEP DR	Safety Harbor	Condominium	\$357,286	1,125	1989	\$4,866
720 QUAIL KEEP DR	Safety Harbor	Condominium	\$351,678	1,325	1989	\$4,796
735 QUAIL KEEP DR	Safety Harbor	Condominium	\$351,174	1,325	1989	\$4,792
413 S BAYSHORE BLVD # 1	Safety Harbor	Condominium	\$350,899	1,197	1980	\$6,112
615 QUAIL KEEP DR	Safety Harbor	Condominium	\$350,820	1,284	1987	\$4,778
706 QUAIL KEEP DR	Safety Harbor	Condominium	\$350,016	1,325	1989	\$4,784
704 QUAIL KEEP DR	Safety Harbor	Condominium	\$348,146	1,325	1989	\$4,749
737 EARLS CT	Safety Harbor	Condominium	\$348,146	1,325	1989	\$4,749
722 QUAIL KEEP DR	Safety Harbor	Condominium	\$348,146	1,325	1989	\$4,749
735 EARLS CT	Safety Harbor	Condominium	\$348,146	1,325	1989	\$4,749
702 QUAIL KEEP DR	Safety Harbor	Condominium	\$348,146	1,325	1989	\$4,749
630 QUAIL KEEP DR	Safety Harbor	Condominium	\$347,642	1,284	1987	\$4,732
628 QUAIL KEEP DR	Safety Harbor	Condominium	\$347,642	1,284	1987	\$4,732
724 QUAIL KEEP DR	Safety Harbor	Condominium	\$342,506	1,125	1989	\$4,620
413 S BAYSHORE BLVD # 4	Safety Harbor	Condominium	\$340,760	1,197	1980	\$5,930
411 S BAYSHORE BLVD # 1	Safety Harbor	Condominium	\$337,890	1,197	1980	\$5,885

Address	City	Type	Market Value	Sq Ft	Year	Annual Tax
411 S BAYSHORE BLVD # 3	Safety Harbor	Condominium	\$337,890	1,197	1980	\$5,885
602 QUAIL KEEP DR	Safety Harbor	Condominium	\$337,862	1,284	1988	\$4,653
618 QUAIL KEEP DR	Safety Harbor	Condominium	\$337,374	1,284	1987	\$4,599
1207 HOUNDS RUN	Safety Harbor	Condominium	\$337,374	1,284	1987	\$4,599
201 LOS PRADOS DR	Safety Harbor	Condominium	\$336,770	1,250	1985	\$5,555
204 LOS PRADOS DR	Safety Harbor	Condominium	\$336,056	1,250	1985	\$5,544
413 S BAYSHORE BLVD # B2	Safety Harbor	Condominium	\$334,999	1,197	1980	\$5,835
1707 LAKE CYPRESS DR	Safety Harbor	Condominium	\$333,854	1,610	1983	\$5,652
243 LOS PRADOS DR	Safety Harbor	Condominium	\$333,002	1,360	1985	\$5,436
251 LOS PRADOS DR	Safety Harbor	Condominium	\$333,002	1,360	1985	\$5,436
304 LOS PRADOS DR	Safety Harbor	Condominium	\$332,486	1,250	1984	\$5,478
218 LOS PRADOS DR	Safety Harbor	Condominium	\$332,484	1,360	1984	\$5,424
411 S BAYSHORE BLVD # 6	Safety Harbor	Condominium	\$331,076	1,197	1980	\$5,766
411 S BAYSHORE BLVD # 4	Safety Harbor	Condominium	\$331,076	1,197	1980	\$5,766
413 S BAYSHORE BLVD # 3	Safety Harbor	Condominium	\$330,581	1,279	1980	\$5,758
413 S BAYSHORE BLVD # 5	Safety Harbor	Condominium	\$326,910	1,197	1980	\$5,694
1759 LAKE CYPRESS DR	Safety Harbor	Condominium	\$326,804	1,610	1983	\$5,533
729 QUAIL KEEP DR	Safety Harbor	Condominium	\$326,227	1,125	1989	\$4,447
727 QUAIL KEEP DR	Safety Harbor	Condominium	\$323,870	1,125	1990	\$4,903
717 QUAIL KEEP DR	Safety Harbor	Condominium	\$323,870	1,125	1990	\$4,410
413 S BAYSHORE BLVD # 6	Safety Harbor	Condominium	\$321,094	1,279	1980	\$5,593
206 LOS PRADOS DR	Safety Harbor	Condominium	\$320,314	1,360	1985	\$5,279
219 LOS PRADOS DR	Safety Harbor	Condominium	\$320,314	1,360	1985	\$5,279
203 LOS PRADOS DR	Safety Harbor	Condominium	\$320,314	1,360	1985	\$5,279
306 LOS PRADOS DR	Safety Harbor	Condominium	\$319,796	1,360	1984	\$5,267

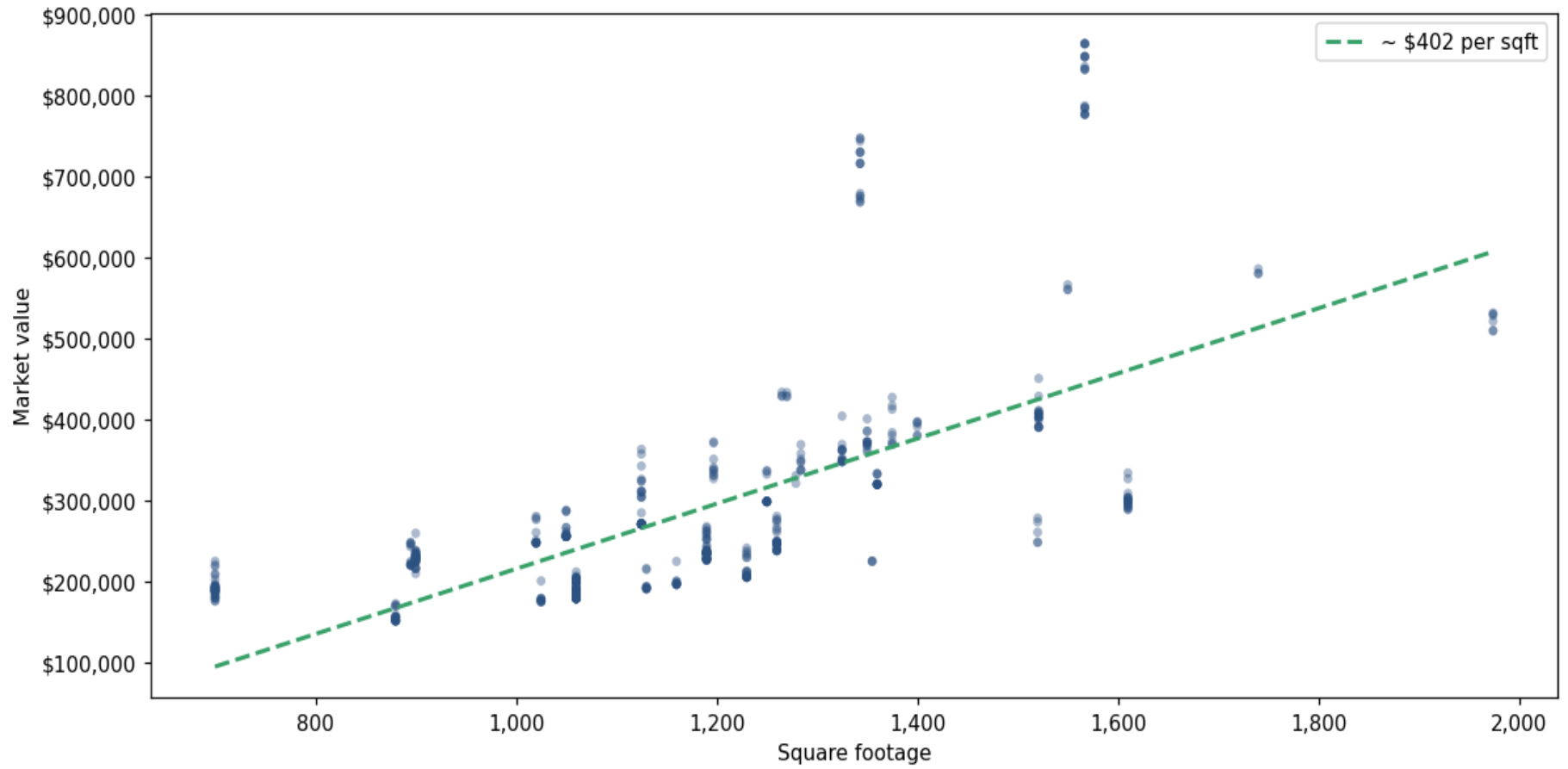
Address	City	Type	Market Value	Sq Ft	Year	Annual Tax
327 LOS PRADOS DR	Safety Harbor	Condominium	\$319,796	1,360	1984	\$5,267
275 LOS PRADOS DR	Safety Harbor	Condominium	\$319,796	1,360	1984	\$5,267
338 LOS PRADOS DR	Safety Harbor	Condominium	\$319,796	1,360	1984	\$5,267
307 LOS PRADOS DR	Safety Harbor	Condominium	\$319,796	1,360	1984	\$5,267
362 LOS PRADOS DR	Safety Harbor	Condominium	\$319,796	1,360	1984	\$5,267
330 LOS PRADOS DR	Safety Harbor	Condominium	\$319,796	1,360	1984	\$5,267
733 EARLS CT	Safety Harbor	Condominium	\$312,089	1,125	1989	\$4,253
718 QUAIL KEEP DR	Safety Harbor	Condominium	\$310,590	1,125	1989	\$4,316
700 QUAIL KEEP DR	Safety Harbor	Condominium	\$310,590	1,125	1989	\$4,233
739 EARLS CT	Safety Harbor	Condominium	\$310,590	1,125	1989	\$4,233
1714 LAKE CYPRESS DR	Safety Harbor	Condominium	\$308,717	1,610	1983	\$5,228
259 LOS PRADOS DR	Safety Harbor	Condominium	\$304,378	1,125	1985	\$5,017
303 LOS PRADOS DR	Safety Harbor	Condominium	\$304,378	1,125	1984	\$5,017
331 LOS PRADOS DR	Safety Harbor	Condominium	\$303,950	1,125	1984	\$5,010
1740 LAKE CYPRESS DR	Safety Harbor	Condominium	\$303,507	1,610	1984	\$5,142
1742 LAKE CYPRESS DR	Safety Harbor	Condominium	\$303,507	1,610	1984	\$5,142
1705 LAKE CYPRESS DR	Safety Harbor	Condominium	\$302,893	1,610	1983	\$5,128
1717 LAKE CYPRESS DR	Safety Harbor	Condominium	\$302,893	1,610	1983	\$5,128
1750 LAKE CYPRESS DR	Safety Harbor	Condominium	\$299,828	1,610	1983	\$5,075
1704 LAKE CYPRESS DR	Safety Harbor	Condominium	\$299,828	1,610	1983	\$5,075
1805 LAKE CYPRESS DR	Safety Harbor	Condominium	\$299,828	1,610	1983	\$5,080
1719 LAKE CYPRESS DR	Safety Harbor	Condominium	\$299,828	1,610	1983	\$5,075
249 LOS PRADOS DR	Safety Harbor	Condominium	\$298,928	1,250	1985	\$4,934
217 LOS PRADOS DR	Safety Harbor	Condominium	\$298,928	1,250	1985	\$5,082
241 LOS PRADOS DR	Safety Harbor	Condominium	\$298,928	1,250	1985	\$4,934

Address	City	Type	Market Value	Sq Ft	Year	Annual Tax
325 LOS PRADOS DR	Safety Harbor	Condominium	\$298,452	1,250	1984	\$4,923
216 LOS PRADOS DR	Safety Harbor	Condominium	\$298,452	1,250	1984	\$4,923
336 LOS PRADOS DR	Safety Harbor	Condominium	\$298,452	1,250	1984	\$4,923
273 LOS PRADOS DR	Safety Harbor	Condominium	\$298,452	1,250	1984	\$4,923
305 LOS PRADOS DR	Safety Harbor	Condominium	\$298,452	1,250	1984	\$4,923
328 LOS PRADOS DR	Safety Harbor	Condominium	\$298,452	1,250	1984	\$4,923
360 LOS PRADOS DR	Safety Harbor	Condominium	\$298,452	1,250	1984	\$4,923
1739 LAKE CYPRESS DR	Safety Harbor	Condominium	\$296,762	1,610	1983	\$5,028
1749 LAKE CYPRESS DR	Safety Harbor	Condominium	\$296,762	1,610	1983	\$5,028
1729 LAKE CYPRESS DR	Safety Harbor	Condominium	\$296,762	1,610	1983	\$5,028
1754 LAKE CYPRESS DR	Safety Harbor	Condominium	\$294,004	1,610	1983	\$4,980
1730 LAKE CYPRESS DR	Safety Harbor	Condominium	\$293,697	1,610	1983	\$4,980

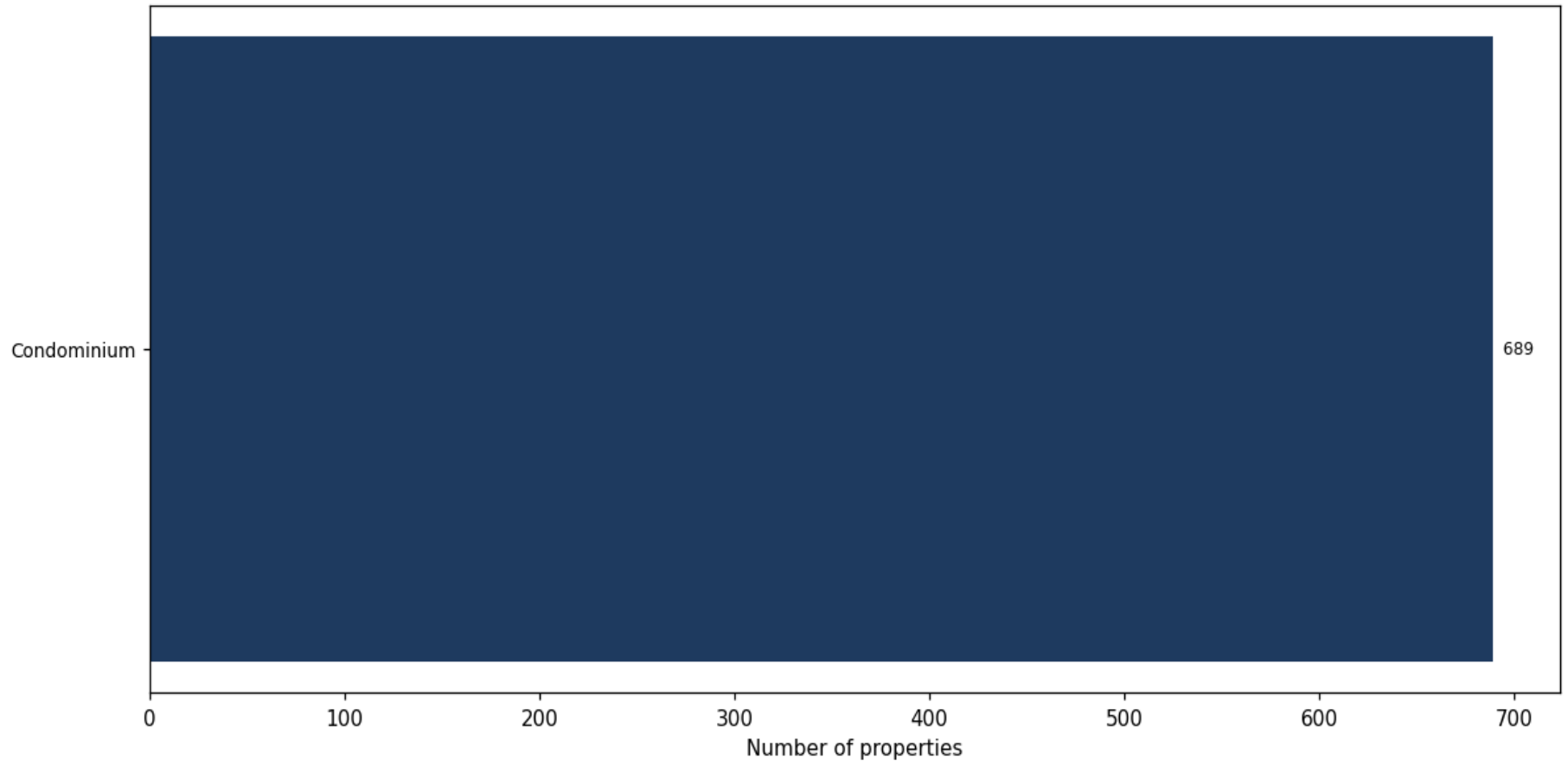
Market value distribution (n=689, top 1% trimmed for readability)



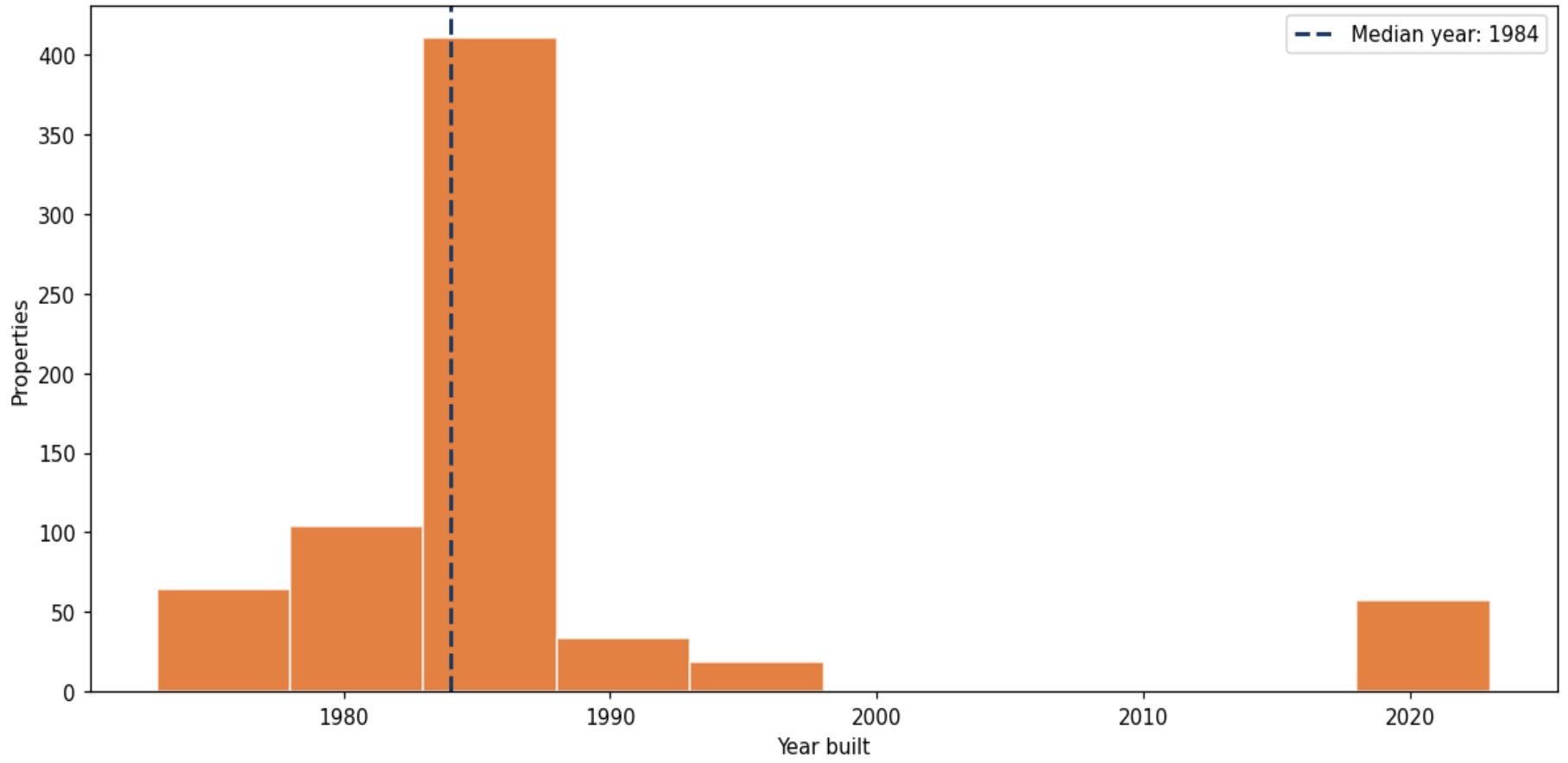
Building size vs. market value (n=679, outliers trimmed)



Top property types by count



Year built distribution (5-year buckets)



Market value vs. assessed value (gap = untaxed appreciation)

