

Pinellas Property Market Report

1,237 matching properties • May 31, 2026

Filters applied	Headline numbers
City: Pinellas Park	Properties matched: 1,237
Property type: Planned Unit Development	Median market value: \$266,532
	Mean market value: \$264,779
	Min / Max: \$44,673 / \$574,261
	Mean square footage: 1,416

Top 200 properties by market value

Address	City	Type	Market Value	Sq Ft	Year	Annual Tax
6202 64TH WAY N	Pinellas Park	Planned Unit Development	\$574,261	2,410	2024	\$11,333
6201 64TH WAY N	Pinellas Park	Planned Unit Development	\$574,261	2,410	2024	\$11,333
6203 64TH WAY N	Pinellas Park	Planned Unit Development	\$561,059	2,365	2024	\$11,093
6208 64TH WAY N	Pinellas Park	Planned Unit Development	\$553,898	2,365	2024	\$10,942
6205 64TH WAY N	Pinellas Park	Planned Unit Development	\$553,898	2,365	2024	\$10,942
12168 LAKE ALLEN DR	Pinellas Park	Planned Unit Development	\$436,726	2,584	2002	\$7,937
6541 95TH PL N	Pinellas Park	Planned Unit Development	\$409,197	2,462	2024	\$8,445
9534 65TH LN N	Pinellas Park	Planned Unit Development	\$409,197	2,462	2024	\$8,445
9527 65TH LN N	Pinellas Park	Planned Unit Development	\$409,197	2,462	2024	\$8,445
6567 95TH PL N	Pinellas Park	Planned Unit Development	\$409,197	2,462	2024	\$8,445
6550 95TH PL N	Pinellas Park	Planned Unit Development	\$409,197	2,462	2024	\$8,445
6568 95TH PL N	Pinellas Park	Planned Unit Development	\$409,197	2,462	2024	\$8,445
6523 95TH PL N	Pinellas Park	Planned Unit Development	\$409,197	2,462	2024	\$8,445

Address	City	Type	Market Value	Sq Ft	Year	Annual Tax
6519 95TH PL N	Pinellas Park	Planned Unit Development	\$405,077	2,294	2024	\$8,338
6563 95TH PL N	Pinellas Park	Planned Unit Development	\$405,077	2,294	2024	\$8,338
11994 LAKE ALLEN DR	Pinellas Park	Planned Unit Development	\$398,817	2,316	1998	\$7,219
8410 66TH WAY N	Pinellas Park	Planned Unit Development	\$395,098	2,025	2005	\$7,644
11992 LAKE ALLEN DR	Pinellas Park	Planned Unit Development	\$393,603	2,316	1998	\$7,154
6659 83RD AVE N	Pinellas Park	Planned Unit Development	\$393,598	2,025	2005	\$7,636
8361 118TH AVE	Pinellas Park	Planned Unit Development	\$393,550	2,051	2010	\$7,052
6564 95TH PL N	Pinellas Park	Planned Unit Development	\$391,047	2,332	2024	\$8,061
6515 95TH PL N	Pinellas Park	Planned Unit Development	\$391,047	2,332	2024	\$8,061
6571 95TH PL N	Pinellas Park	Planned Unit Development	\$391,047	2,332	2024	\$8,061
9530 65TH LN N	Pinellas Park	Planned Unit Development	\$391,047	2,332	2024	\$8,061
6527 95TH PL N	Pinellas Park	Planned Unit Development	\$391,047	2,332	2024	\$8,061
9531 65TH LN N	Pinellas Park	Planned Unit Development	\$391,047	2,332	2024	\$8,061
6546 95TH PL N	Pinellas Park	Planned Unit Development	\$391,047	2,332	2024	\$8,061
6559 95TH PL N	Pinellas Park	Planned Unit Development	\$391,047	2,332	2024	\$8,061
6545 95TH PL N	Pinellas Park	Planned Unit Development	\$391,047	2,332	2024	\$8,061
11980 LAKE ALLEN DR	Pinellas Park	Planned Unit Development	\$384,731	2,051	2003	\$6,975
8301 118TH AVE	Pinellas Park	Planned Unit Development	\$383,962	2,051	2005	\$7,090
11860 LAKE ALLEN DR	Pinellas Park	Planned Unit Development	\$383,944	2,051	2003	\$6,987
11930 LAKE ALLEN DR	Pinellas Park	Planned Unit Development	\$381,466	2,051	2004	\$6,891
8291 118TH AVE	Pinellas Park	Planned Unit Development	\$380,499	2,051	2005	\$6,982
8287 118TH AVE	Pinellas Park	Planned Unit Development	\$380,499	2,051	2005	\$6,860
12170 LAKE ALLEN DR	Pinellas Park	Planned Unit Development	\$380,408	2,162	2002	\$7,211
12130 LAKE ALLEN DR	Pinellas Park	Planned Unit Development	\$379,740	2,051	2001	\$6,928
8245 118TH AVE	Pinellas Park	Planned Unit Development	\$378,576	2,051	2004	\$6,832

Address	City	Type	Market Value	Sq Ft	Year	Annual Tax
8205 118TH AVE	Pinellas Park	Planned Unit Development	\$378,576	2,051	2004	\$6,832
8249 118TH AVE	Pinellas Park	Planned Unit Development	\$378,576	2,051	2004	\$6,832
11970 LAKE ALLEN DR	Pinellas Park	Planned Unit Development	\$377,036	2,051	2003	\$6,832
12166 LAKE ALLEN DR	Pinellas Park	Planned Unit Development	\$376,758	2,162	2002	\$6,838
8337 118TH AVE	Pinellas Park	Planned Unit Development	\$376,267	2,051	2010	\$6,724
8351 118TH AVE	Pinellas Park	Planned Unit Development	\$376,267	2,051	2010	\$6,724
8333 118TH AVE	Pinellas Park	Planned Unit Development	\$375,321	2,051	2008	\$6,743
8347 118TH AVE	Pinellas Park	Planned Unit Development	\$373,189	2,051	2008	\$6,702
8281 118TH AVE	Pinellas Park	Planned Unit Development	\$372,805	2,051	2005	\$6,724
8345 118TH AVE	Pinellas Park	Planned Unit Development	\$372,565	2,051	2011	\$6,779
6651 83RD AVE N	Pinellas Park	Planned Unit Development	\$372,210	2,025	2005	\$7,214
6664 83RD AVE N	Pinellas Park	Planned Unit Development	\$372,210	2,025	2005	\$7,214
8355 66TH WAY N	Pinellas Park	Planned Unit Development	\$372,210	2,025	2005	\$7,214
6663 83RD AVE N	Pinellas Park	Planned Unit Development	\$372,210	2,025	2005	\$7,214
6655 83RD AVE N	Pinellas Park	Planned Unit Development	\$372,210	2,025	2005	\$7,214
6685 84TH AVE N	Pinellas Park	Planned Unit Development	\$372,210	2,025	2005	\$7,214
6645 84TH AVE N	Pinellas Park	Planned Unit Development	\$372,210	2,025	2005	\$7,214
6689 84TH AVE N	Pinellas Park	Planned Unit Development	\$372,210	2,025	2005	\$7,214
6633 84TH AVE N	Pinellas Park	Planned Unit Development	\$372,210	2,025	2005	\$7,214
6639 83RD AVE N	Pinellas Park	Planned Unit Development	\$372,210	2,025	2005	\$7,214
6657 84TH AVE N	Pinellas Park	Planned Unit Development	\$372,210	2,025	2005	\$7,214
6693 84TH AVE N	Pinellas Park	Planned Unit Development	\$372,210	2,025	2005	\$7,214
8307 118TH AVE	Pinellas Park	Planned Unit Development	\$372,035	2,051	2007	\$6,688
7553 62ND WAY N	Pinellas Park	Planned Unit Development	\$371,591	1,970	2024	\$7,108
7511 62ND WAY N	Pinellas Park	Planned Unit Development	\$371,591	1,970	2024	\$7,108

Address	City	Type	Market Value	Sq Ft	Year	Annual Tax
8237 118TH AVE	Pinellas Park	Planned Unit Development	\$370,880	2,051	2004	\$6,702
8209 118TH AVE	Pinellas Park	Planned Unit Development	\$370,880	2,051	2004	\$6,702
8319 118TH AVE	Pinellas Park	Planned Unit Development	\$370,496	2,051	2006	\$6,673
11920 LAKE ALLEN DR	Pinellas Park	Planned Unit Development	\$370,496	2,051	2002	\$6,673
8323 118TH AVE	Pinellas Park	Planned Unit Development	\$370,496	2,051	2006	\$6,673
11830 LAKE ALLEN DR	Pinellas Park	Planned Unit Development	\$369,727	2,051	2003	\$6,702
11960 LAKE ALLEN DR	Pinellas Park	Planned Unit Development	\$369,727	2,051	2003	\$6,702
11940 LAKE ALLEN DR	Pinellas Park	Planned Unit Development	\$369,727	2,051	2003	\$6,788
8277 118TH AVE	Pinellas Park	Planned Unit Development	\$369,342	2,051	2005	\$6,659
8339 118TH AVE	Pinellas Park	Planned Unit Development	\$368,957	2,051	2010	\$6,594
8341 118TH AVE	Pinellas Park	Planned Unit Development	\$368,957	2,051	2010	\$6,594
8343 118TH AVE	Pinellas Park	Planned Unit Development	\$368,957	2,051	2010	\$6,594
8357 118TH AVE	Pinellas Park	Planned Unit Development	\$368,957	2,051	2010	\$6,594
8332 66TH WAY N	Pinellas Park	Planned Unit Development	\$368,704	2,025	2008	\$7,160
6673 84TH AVE N	Pinellas Park	Planned Unit Development	\$368,458	2,025	2005	\$7,146
6669 84TH AVE N	Pinellas Park	Planned Unit Development	\$368,458	2,025	2005	\$7,146
8359 66TH WAY N	Pinellas Park	Planned Unit Development	\$368,458	2,025	2005	\$7,146
6676 83RD AVE N	Pinellas Park	Planned Unit Development	\$368,458	2,025	2005	\$7,146
8221 118TH AVE	Pinellas Park	Planned Unit Development	\$368,087	2,051	2004	\$6,651
8263 118TH AVE	Pinellas Park	Planned Unit Development	\$367,418	2,051	2004	\$6,638
8217 118TH AVE	Pinellas Park	Planned Unit Development	\$367,418	2,051	2004	\$6,638
8273 118TH AVE	Pinellas Park	Planned Unit Development	\$367,418	2,051	2004	\$6,638
8235 118TH AVE	Pinellas Park	Planned Unit Development	\$367,418	2,051	2004	\$6,638
8232 66TH WAY N	Pinellas Park	Planned Unit Development	\$366,957	2,025	2008	\$7,123
8320 66TH WAY N	Pinellas Park	Planned Unit Development	\$366,957	2,025	2008	\$7,123

Address	City	Type	Market Value	Sq Ft	Year	Annual Tax
11870 LAKE ALLEN DR	Pinellas Park	Planned Unit Development	\$366,264	2,051	2003	\$6,638
8327 N 118TH AVE	Pinellas Park	Planned Unit Development	\$365,879	2,051	2008	\$6,573
8359 118TH AVE	Pinellas Park	Planned Unit Development	\$365,110	2,051	2010	\$6,530
11880 LAKE ALLEN DR	Pinellas Park	Planned Unit Development	\$365,110	2,051	2002	\$6,623
8353 118TH AVE	Pinellas Park	Planned Unit Development	\$365,110	2,051	2010	\$6,530
8355 118TH AVE	Pinellas Park	Planned Unit Development	\$365,110	2,051	2010	\$6,530
6653 82ND TER N	Pinellas Park	Planned Unit Development	\$365,081	2,025	2005	\$7,077
8422 66TH WAY N	Pinellas Park	Planned Unit Development	\$365,081	2,025	2005	\$7,077
8260 66TH WAY N	Pinellas Park	Planned Unit Development	\$365,081	2,025	2005	\$7,077
8390 66TH WAY N	Pinellas Park	Planned Unit Development	\$365,081	2,025	2005	\$7,077
8362 66TH WAY N	Pinellas Park	Planned Unit Development	\$365,081	2,025	2005	\$7,077
6641 82ND TER N	Pinellas Park	Planned Unit Development	\$365,081	2,025	2005	\$7,077
8248 66TH WAY N	Pinellas Park	Planned Unit Development	\$365,081	2,025	2005	\$7,077
8268 66TH WAY N	Pinellas Park	Planned Unit Development	\$365,081	2,025	2005	\$7,077
6675 83RD AVE N	Pinellas Park	Planned Unit Development	\$365,081	2,025	2005	\$7,077
6648 83RD AVE N	Pinellas Park	Planned Unit Development	\$365,081	2,025	2005	\$7,077
6660 83RD AVE N	Pinellas Park	Planned Unit Development	\$365,081	2,025	2005	\$7,077
8350 66TH WAY N	Pinellas Park	Planned Unit Development	\$365,081	2,025	2005	\$7,077
8280 66TH WAY N	Pinellas Park	Planned Unit Development	\$365,081	2,025	2005	\$7,077
8325 118TH AVE	Pinellas Park	Planned Unit Development	\$364,725	2,051	2007	\$6,559
8315 118TH AVE	Pinellas Park	Planned Unit Development	\$364,725	2,051	2007	\$6,559
8299 118TH AVE	Pinellas Park	Planned Unit Development	\$364,400	2,051	2005	\$6,575
8259 118TH AVE	Pinellas Park	Planned Unit Development	\$363,571	2,051	2004	\$6,573
8231 118TH AVE	Pinellas Park	Planned Unit Development	\$363,571	2,051	2004	\$6,573
8220 66TH WAY N	Pinellas Park	Planned Unit Development	\$363,205	2,025	2008	\$7,054

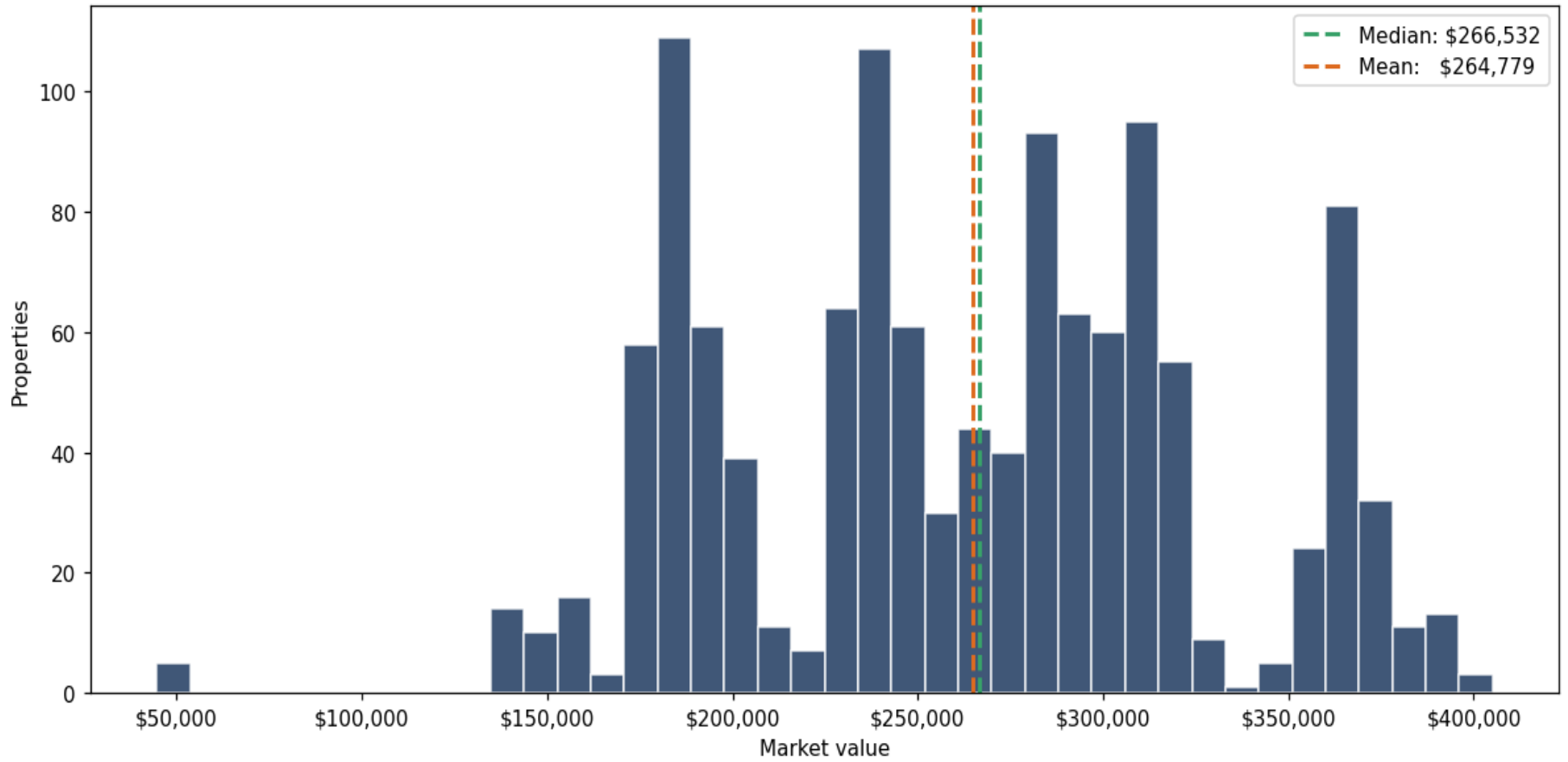
Address	City	Type	Market Value	Sq Ft	Year	Annual Tax
8329 118TH AVE	Pinellas Park	Planned Unit Development	\$363,186	2,051	2006	\$6,544
8331 118TH AVE	Pinellas Park	Planned Unit Development	\$363,186	2,051	2006	\$6,544
11950 LAKE ALLEN DR	Pinellas Park	Planned Unit Development	\$362,417	2,051	2003	\$6,573
8293 118TH AVE	Pinellas Park	Planned Unit Development	\$362,032	2,051	2005	\$6,530
8285 118TH AVE	Pinellas Park	Planned Unit Development	\$362,032	2,051	2005	\$6,530
8295 118TH AVE	Pinellas Park	Planned Unit Development	\$362,032	2,051	2005	\$6,530
8283 118TH AVE	Pinellas Park	Planned Unit Development	\$362,032	2,051	2005	\$6,530
8311 118TH AVE	Pinellas Park	Planned Unit Development	\$362,032	2,051	2005	\$6,530
8309 118TH AVE	Pinellas Park	Planned Unit Development	\$362,032	2,051	2005	\$6,530
8279 118TH AVE	Pinellas Park	Planned Unit Development	\$362,032	2,051	2005	\$6,705
8267 118TH AVE	Pinellas Park	Planned Unit Development	\$362,032	2,051	2005	\$6,530
8269 118TH AVE	Pinellas Park	Planned Unit Development	\$362,032	2,051	2005	\$6,530
8297 118TH AVE	Pinellas Park	Planned Unit Development	\$362,032	2,051	2005	\$6,530
8317 118TH AVE	Pinellas Park	Planned Unit Development	\$362,032	2,051	2005	\$6,530
6634 83RD AVE N	Pinellas Park	Planned Unit Development	\$361,704	2,025	2005	\$7,008
6644 83RD AVE N	Pinellas Park	Planned Unit Development	\$361,704	2,025	2005	\$7,008
12032 LAKE ALLEN DR	Pinellas Park	Planned Unit Development	\$361,647	2,051	2002	\$6,559
8378 66TH WAY N	Pinellas Park	Planned Unit Development	\$361,329	2,025	2005	\$7,008
7535 62ND WAY N	Pinellas Park	Planned Unit Development	\$361,315	1,950	2024	\$6,918
7547 62ND WAY N	Pinellas Park	Planned Unit Development	\$361,315	1,950	2024	\$6,918
7523 62ND WAY N	Pinellas Park	Planned Unit Development	\$361,315	1,950	2024	\$6,918
7517 62ND WAY N	Pinellas Park	Planned Unit Development	\$361,315	1,950	2024	\$6,918
7529 62ND WAY N	Pinellas Park	Planned Unit Development	\$361,315	1,950	2024	\$6,918
7541 62ND WAY N	Pinellas Park	Planned Unit Development	\$361,315	1,950	2024	\$6,918
8251 118TH AVE	Pinellas Park	Planned Unit Development	\$360,513	2,051	2004	\$6,516

Address	City	Type	Market Value	Sq Ft	Year	Annual Tax
8271 118TH AVE	Pinellas Park	Planned Unit Development	\$360,108	2,051	2004	\$6,508
8211 118TH AVE	Pinellas Park	Planned Unit Development	\$360,108	2,051	2004	\$6,508
8253 118TH AVE	Pinellas Park	Planned Unit Development	\$360,108	2,051	2004	\$6,508
8241 118TH AVE	Pinellas Park	Planned Unit Development	\$360,108	2,051	2004	\$6,508
12042 LAKE ALLEN DR	Pinellas Park	Planned Unit Development	\$360,108	2,051	2001	\$6,544
8229 118TH AVE	Pinellas Park	Planned Unit Development	\$360,108	2,051	2004	\$6,508
8223 118TH AVE	Pinellas Park	Planned Unit Development	\$360,108	2,051	2004	\$6,508
12120 LAKE ALLEN DR	Pinellas Park	Planned Unit Development	\$360,108	2,051	2001	\$6,544
8207 118TH AVE	Pinellas Park	Planned Unit Development	\$360,108	2,051	2004	\$6,508
8255 118TH AVE	Pinellas Park	Planned Unit Development	\$360,108	2,051	2004	\$6,508
8265 118TH AVE	Pinellas Park	Planned Unit Development	\$360,108	2,051	2004	\$6,508
8257 118TH AVE	Pinellas Park	Planned Unit Development	\$360,108	2,051	2004	\$6,508
8239 118TH AVE	Pinellas Park	Planned Unit Development	\$360,108	2,051	2004	\$6,508
12076 LAKE ALLEN DR	Pinellas Park	Planned Unit Development	\$360,108	2,051	2001	\$6,544
8215 118TH AVE	Pinellas Park	Planned Unit Development	\$360,108	2,051	2004	\$6,508
11840 LAKE ALLEN DR	Pinellas Park	Planned Unit Development	\$358,954	2,051	2003	\$6,508
11850 LAKE ALLEN DR	Pinellas Park	Planned Unit Development	\$358,954	2,051	2003	\$6,508
11890 LAKE ALLEN DR	Pinellas Park	Planned Unit Development	\$358,954	2,051	2003	\$6,508
11910 LAKE ALLEN DR	Pinellas Park	Planned Unit Development	\$358,954	2,051	2003	\$6,508
6618 83RD AVE N	Pinellas Park	Planned Unit Development	\$357,952	2,025	2005	\$6,938
6602 83RD AVE N	Pinellas Park	Planned Unit Development	\$357,952	2,025	2005	\$6,938
6654 82ND TER N	Pinellas Park	Planned Unit Development	\$357,952	2,025	2005	\$6,938
6631 84TH AVE N	Pinellas Park	Planned Unit Development	\$357,952	2,025	2005	\$6,938
6658 82ND TER N	Pinellas Park	Planned Unit Development	\$357,952	2,025	2005	\$6,938
6670 82ND TER N	Pinellas Park	Planned Unit Development	\$357,952	2,025	2005	\$6,938

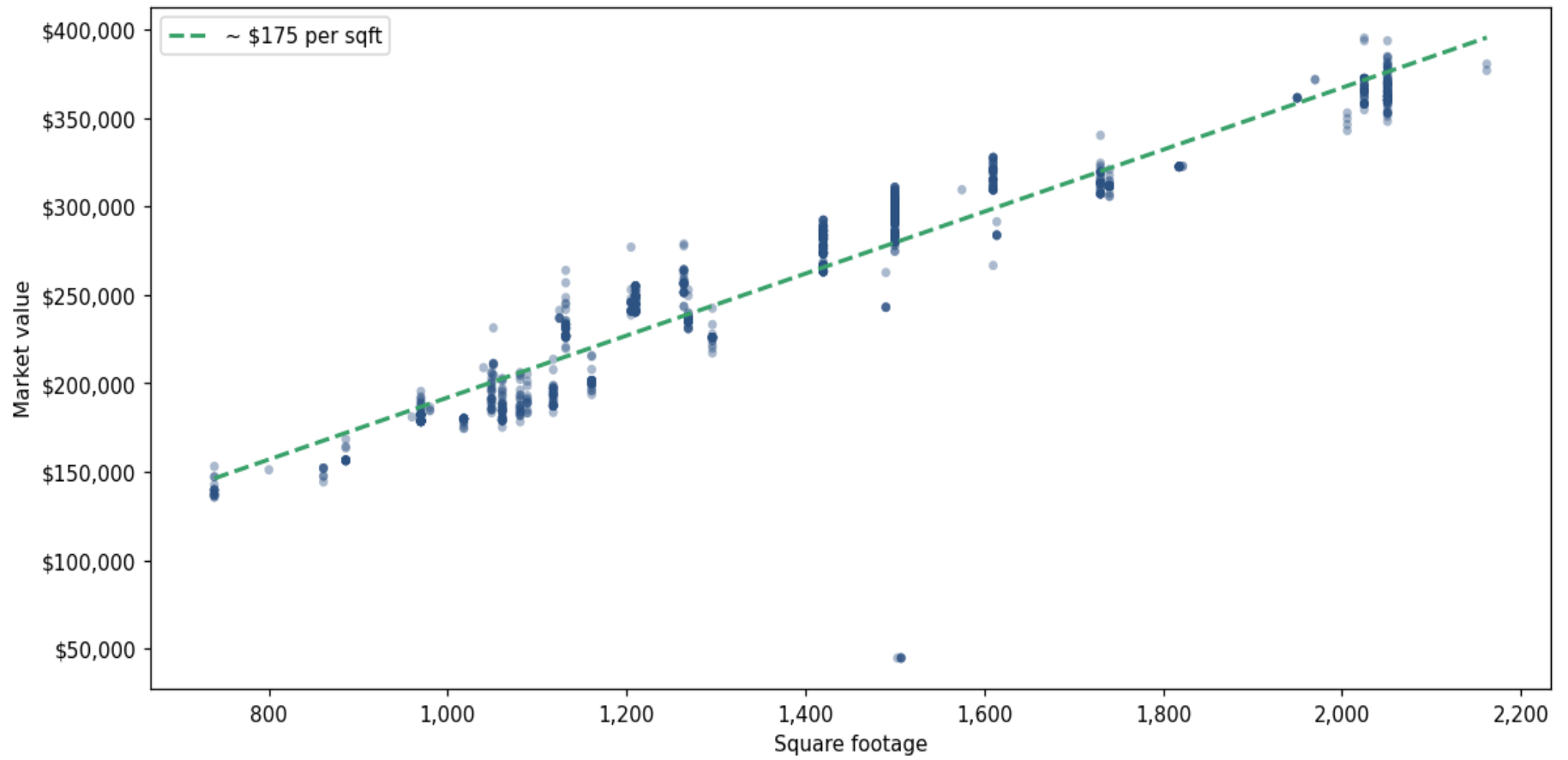
Address	City	Type	Market Value	Sq Ft	Year	Annual Tax
6630 83RD AVE N	Pinellas Park	Planned Unit Development	\$357,952	2,025	2005	\$6,938
6614 83RD AVE N	Pinellas Park	Planned Unit Development	\$357,952	2,025	2005	\$7,094
6619 84TH AVE N	Pinellas Park	Planned Unit Development	\$357,952	2,025	2005	\$6,938
11900 LAKE ALLEN DR	Pinellas Park	Planned Unit Development	\$357,800	2,051	2002	\$6,494
12086 LAKE ALLEN DR	Pinellas Park	Planned Unit Development	\$357,800	2,051	2000	\$6,578
8243 118TH AVE	Pinellas Park	Planned Unit Development	\$356,646	2,051	2004	\$6,444
6642 82ND TER N	Pinellas Park	Planned Unit Development	\$354,575	2,025	2005	\$6,862
12040 LAKE ALLEN DR	Pinellas Park	Planned Unit Development	\$354,338	2,051	2002	\$6,429
12128 LAKE ALLEN DR	Pinellas Park	Planned Unit Development	\$352,798	2,051	2001	\$6,415
11810 LAKE ALLEN DR	Pinellas Park	Planned Unit Development	\$352,798	2,051	2003	\$6,393
12122 LAKE ALLEN DR	Pinellas Park	Planned Unit Development	\$352,798	2,051	2001	\$6,415
12034 LAKE ALLEN DR	Pinellas Park	Planned Unit Development	\$352,798	2,051	2001	\$6,415
11998 LAKE ALLEN DR	Pinellas Park	Planned Unit Development	\$352,742	2,006	1998	\$6,437
12084 LAKE ALLEN DR	Pinellas Park	Planned Unit Development	\$352,589	2,051	2000	\$6,433
12078 LAKE ALLEN DR	Pinellas Park	Planned Unit Development	\$350,875	2,051	2000	\$6,401
11988 LAKE ALLEN DR	Pinellas Park	Planned Unit Development	\$349,574	2,006	1998	\$6,373
11820 LAKE ALLEN DR	Pinellas Park	Planned Unit Development	\$348,005	2,051	2003	\$6,312
11996 LAKE ALLEN DR	Pinellas Park	Planned Unit Development	\$346,187	2,006	1998	\$6,309
11990 LAKE ALLEN DR	Pinellas Park	Planned Unit Development	\$342,800	2,006	1998	\$6,246
6652 83RD AVE N	Pinellas Park	Planned Unit Development	\$340,105	1,730	2005	\$6,583
4667 67TH AVE N	Pinellas Park	Planned Unit Development	\$327,552	1,610	2010	\$6,224
4651 67TH AVE N	Pinellas Park	Planned Unit Development	\$327,552	1,610	2010	\$6,224
4615 67TH AVE N	Pinellas Park	Planned Unit Development	\$327,552	1,610	2010	\$6,224
4655 67TH AVE N	Pinellas Park	Planned Unit Development	\$327,552	1,610	2010	\$6,224
4627 67TH AVE N	Pinellas Park	Planned Unit Development	\$327,552	1,610	2010	\$6,224

Address	City	Type	Market Value	Sq Ft	Year	Annual Tax
4685 66TH PL N	Pinellas Park	Planned Unit Development	\$326,358	1,610	2008	\$6,193
4742 67TH AVE N	Pinellas Park	Planned Unit Development	\$325,165	1,610	2006	\$6,169
4693 67TH AVE N	Pinellas Park	Planned Unit Development	\$324,568	1,610	2010	\$6,163
8328 66TH WAY N	Pinellas Park	Planned Unit Development	\$324,398	1,730	2008	\$6,288
4640 66TH PL N	Pinellas Park	Planned Unit Development	\$323,673	1,610	2011	\$6,150
4620 66TH PL N	Pinellas Park	Planned Unit Development	\$323,673	1,610	2011	\$6,150
6668 83RD AVE N	Pinellas Park	Planned Unit Development	\$322,795	1,730	2005	\$6,255
8227 118TH AVE	Pinellas Park	Planned Unit Development	\$322,635	1,822	2004	\$5,839
8225 118TH AVE	Pinellas Park	Planned Unit Development	\$322,635	1,822	2004	\$5,839
6549 95TH PL N	Pinellas Park	Planned Unit Development	\$322,372	1,818	2024	\$6,649
6575 95TH PL N	Pinellas Park	Planned Unit Development	\$322,372	1,818	2024	\$6,649
6572 95TH PL N	Pinellas Park	Planned Unit Development	\$322,372	1,818	2024	\$6,649

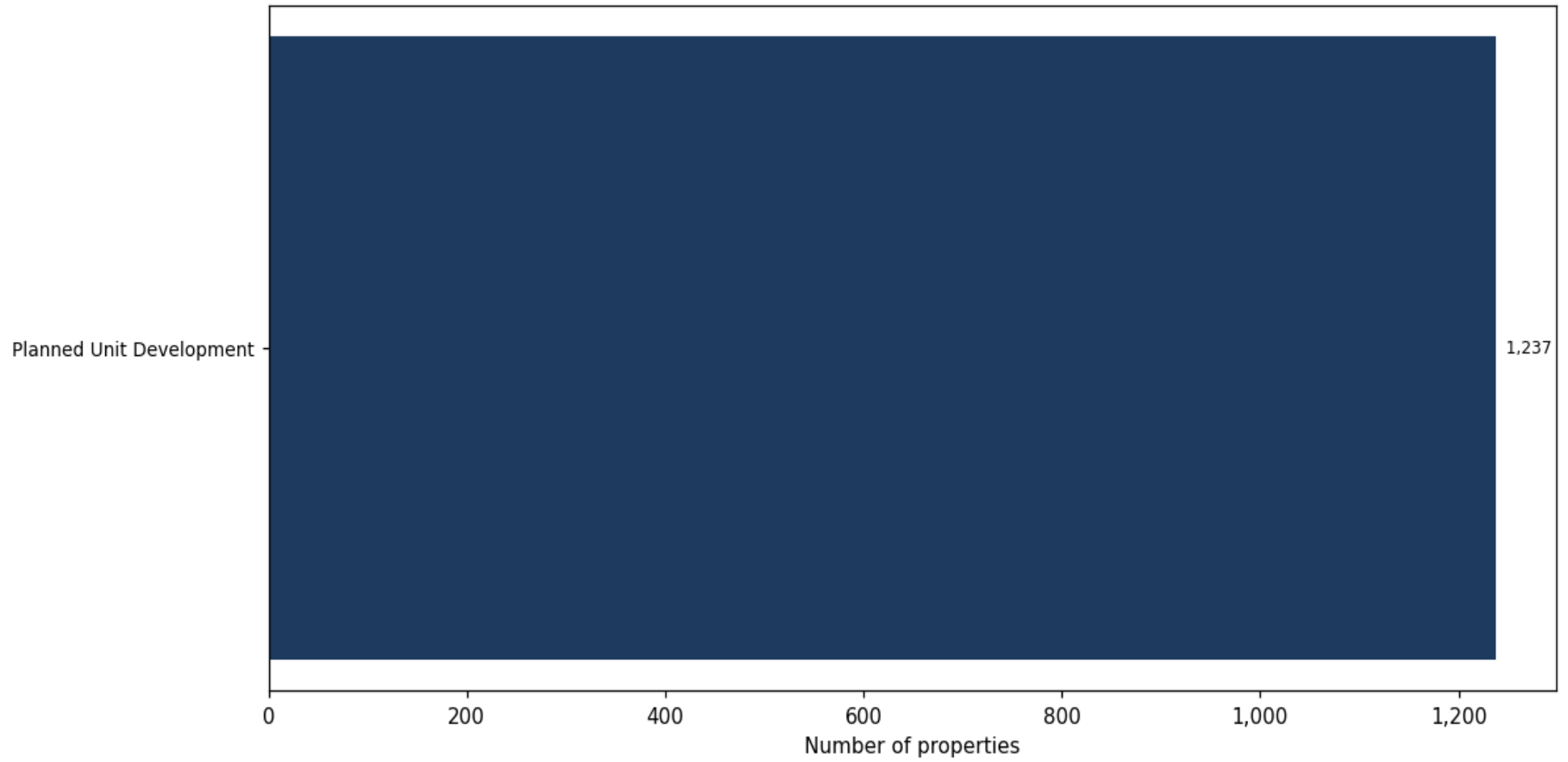
Market value distribution (n=1,237, top 1% trimmed for readability)



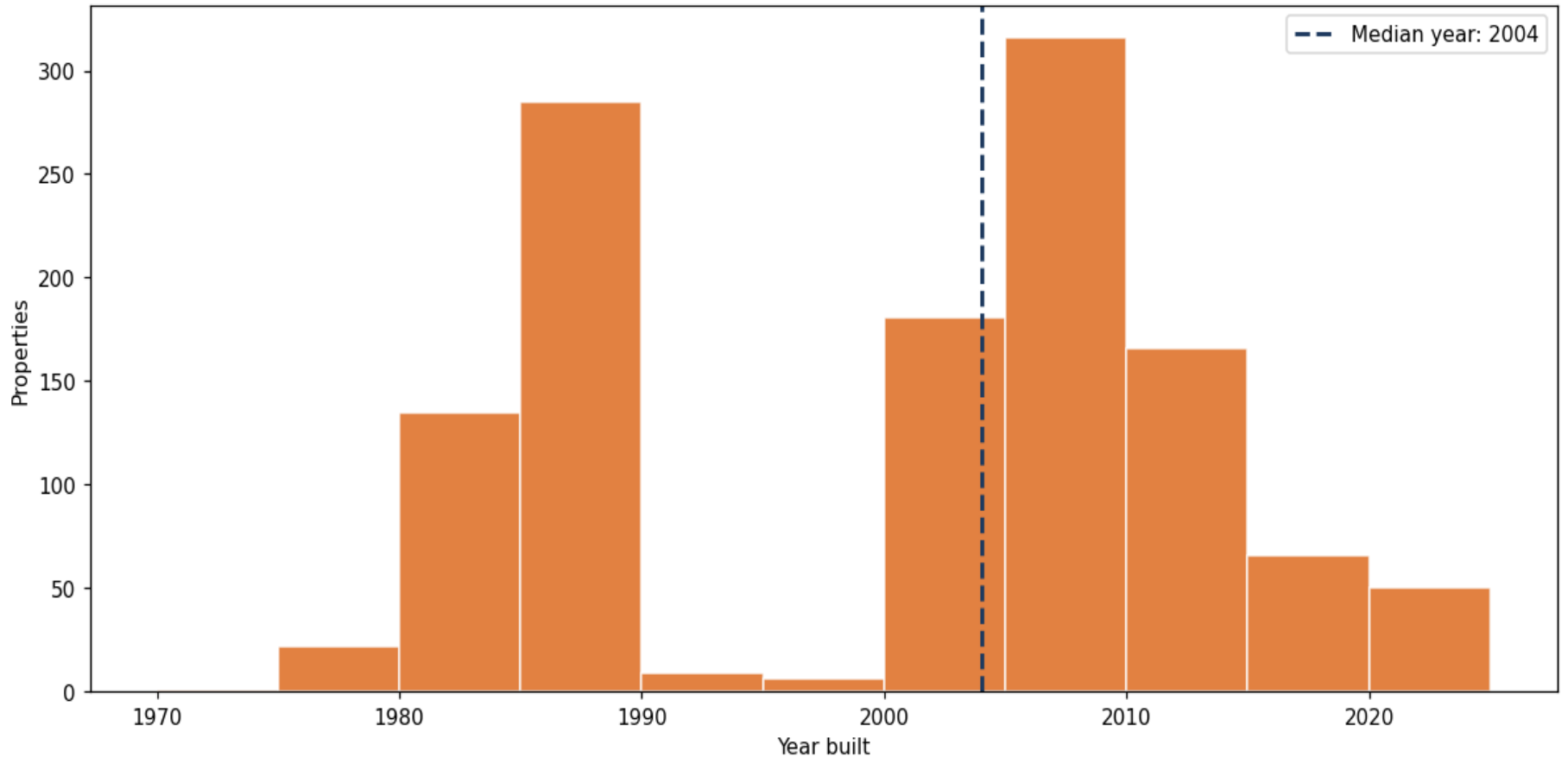
Building size vs. market value (n=1,211, outliers trimmed)



Top property types by count



Year built distribution (5-year buckets)



Market value vs. assessed value (gap = untaxed appreciation)

