

# Pinellas Property Market Report

24 matching properties • May 30, 2026

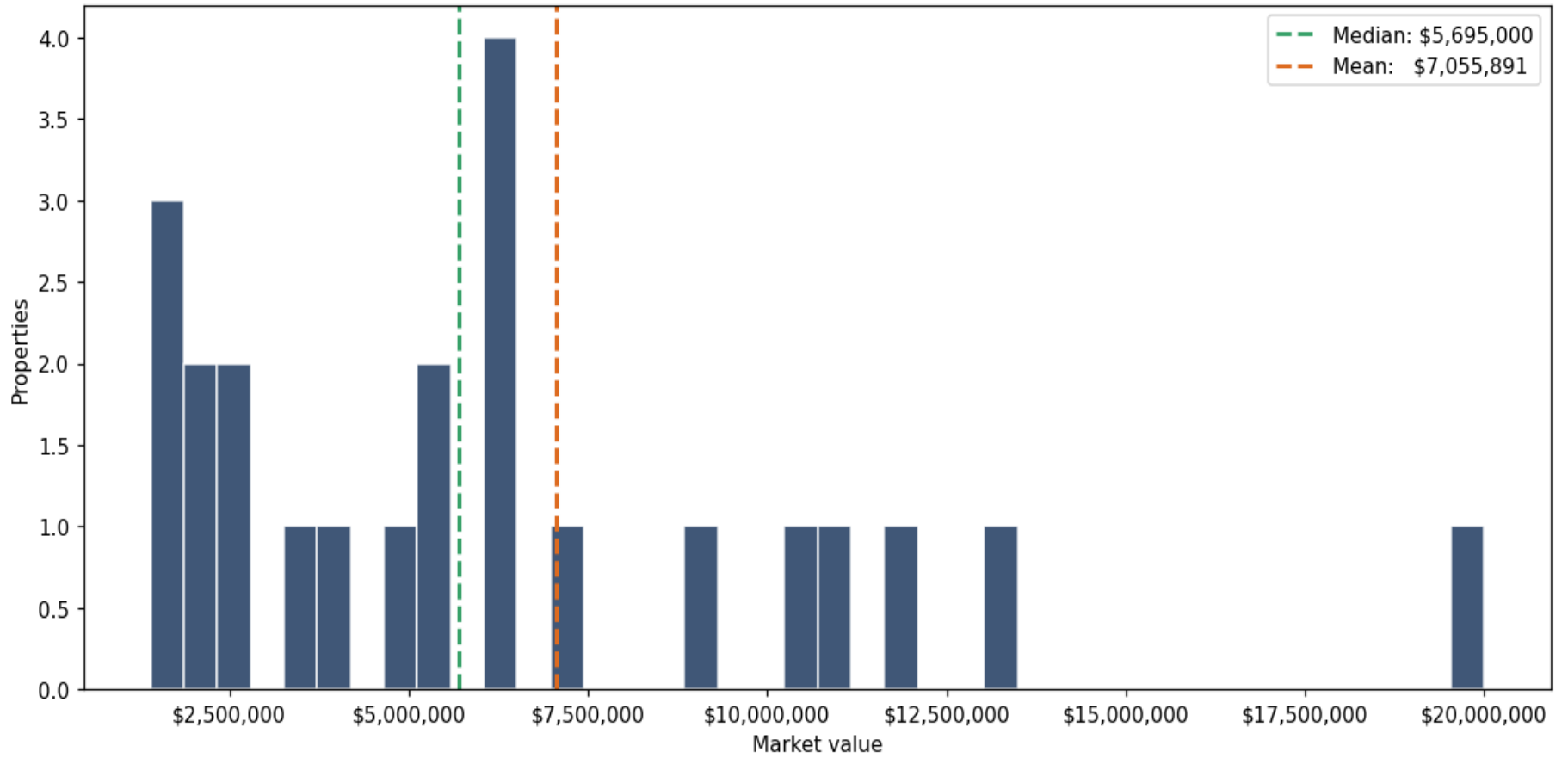
Filters applied	Headline numbers
<b>City:</b> Pinellas Park	<b>Properties matched:</b> 24
<b>Property type:</b> Distribution Warehouse	<b>Median market value:</b> \$6,140,000
	<b>Mean market value:</b> \$7,055,891
	<b>Min / Max:</b> \$1,400,000 / \$25,000,000
	<b>Mean square footage:</b> 74,063

## Top 24 properties by market value

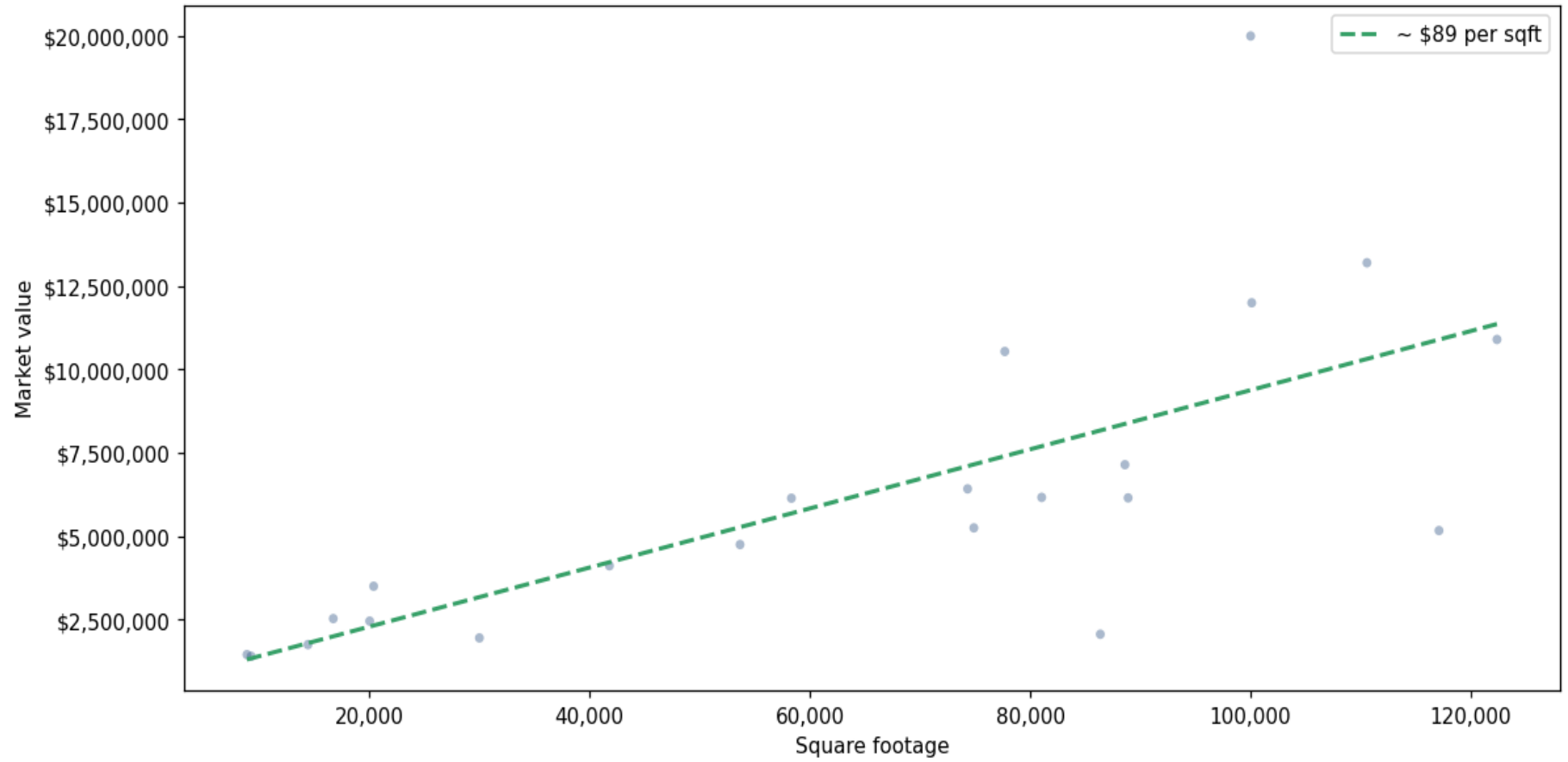
Address	City	Type	Market Value	Sq Ft	Year	Annual Tax
12210 62ND ST N	Pinellas Park	Distribution Warehouse	\$25,000,000	208,960	2020	\$542,928
3201 GATEWAY CENTRE PKWY	Pinellas Park	Distribution Warehouse	\$20,000,000	100,000	2021	\$421,782
9950 28TH ST N	Pinellas Park	Distribution Warehouse	\$13,200,000	110,557	2023	\$285,385
3705 62ND AVE N	Pinellas Park	Distribution Warehouse	\$12,000,000	100,100	2008	\$258,106
3320 122ND AVE N	Pinellas Park	Distribution Warehouse	\$10,900,000	122,360	2001	\$214,877
4555 118TH AVE N	Pinellas Park	Distribution Warehouse	\$10,540,000	77,688	2023	\$201,591
5700 126TH AVE N	Pinellas Park	Distribution Warehouse	\$9,300,000	173,118	1989	\$183,047
7337 BRYAN DAIRY RD	Pinellas Park	Distribution Warehouse	\$7,145,000	88,592	1993	\$144,144
11125 49TH ST N	Pinellas Park	Distribution Warehouse	\$6,420,000	74,311	2006	\$126,804
5181 110TH AVE N	Pinellas Park	Distribution Warehouse	\$6,165,000	81,035	1989	\$124,740
7301 114TH AVE	Pinellas Park	Distribution Warehouse	\$6,150,000	88,879	1996	\$119,483
10344 66TH ST N	Pinellas Park	Distribution Warehouse	\$6,140,000	58,320	2020	\$119,005
2875 MCI DR	Pinellas Park	Distribution Warehouse	\$5,250,000	74,880	1990	\$111,846

Address	City	Type	Market Value	Sq Ft	Year	Annual Tax
6701 90TH AVE	Pinellas Park	Distribution Warehouse	\$5,170,000	117,095	1980	\$109,621
9201 MCI DR	Pinellas Park	Distribution Warehouse	\$4,750,000	53,659	1995	\$103,872
12200 28TH ST N	Pinellas Park	Distribution Warehouse	\$4,115,000	41,800	1984	\$81,535
11421 69TH CT N	Pinellas Park	Distribution Warehouse	\$3,500,000	20,400	2021	\$67,388
3340 122ND AVE N	Pinellas Park	Distribution Warehouse	\$2,530,000	16,735	2001	\$51,139
4300 118TH AVE N	Pinellas Park	Distribution Warehouse	\$2,455,000	20,040	2001	\$48,271
9411 BELCHER RD	Pinellas Park	Distribution Warehouse	\$2,061,378	86,356	2025	\$264,401
4545 110TH AVE N	Pinellas Park	Distribution Warehouse	\$1,950,000	30,000	1996	\$38,999
11901 30TH CT N	Pinellas Park	Distribution Warehouse	\$1,750,000	14,440	1988	\$35,176
11150 49TH ST N	Pinellas Park	Distribution Warehouse	\$1,450,000	8,900	1989	\$28,007
8989 66TH ST	Pinellas Park	Distribution Warehouse	\$1,400,000	9,280	2002	\$30,007

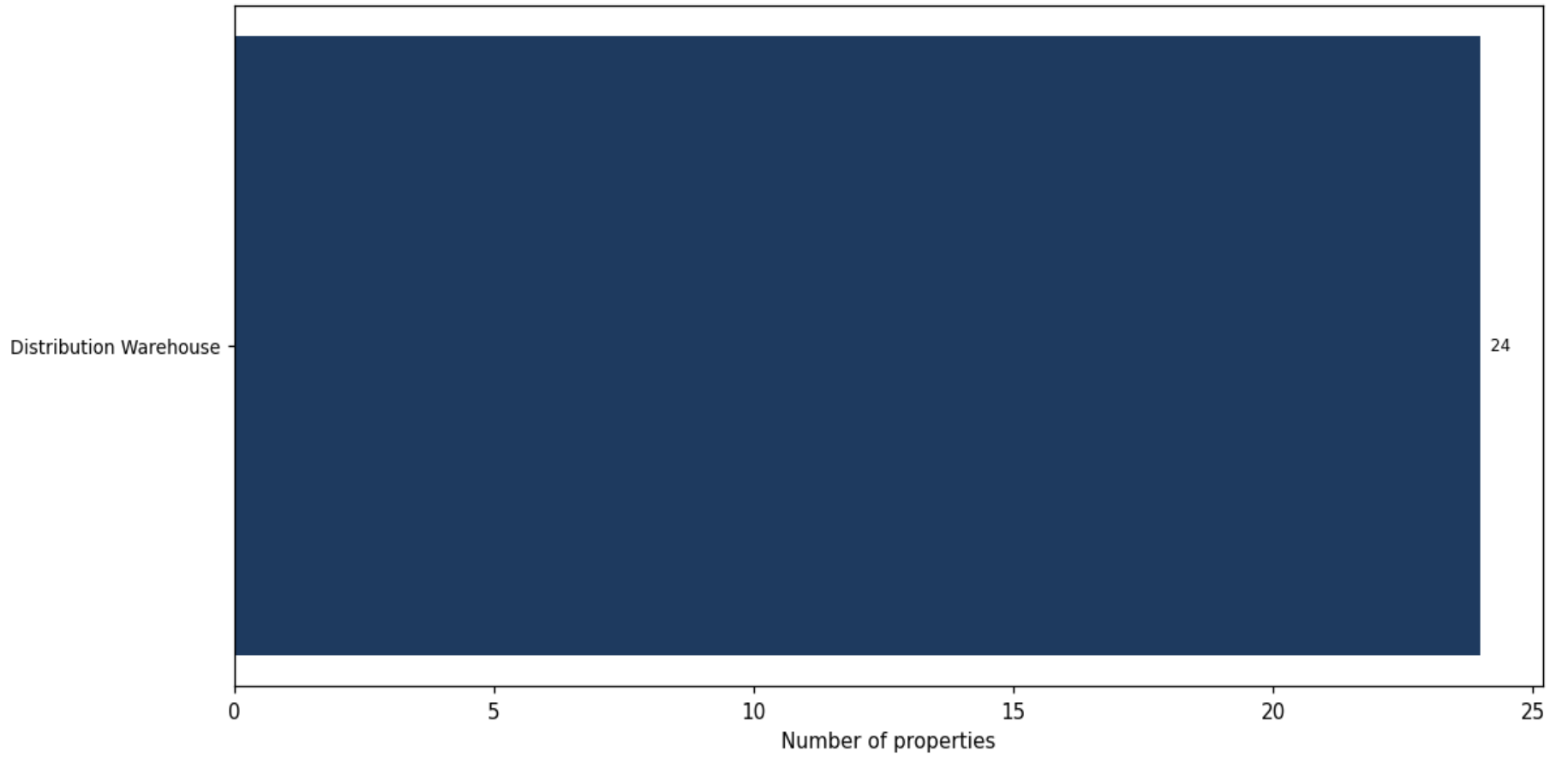
**Market value distribution (n=24, top 1% trimmed for readability)**



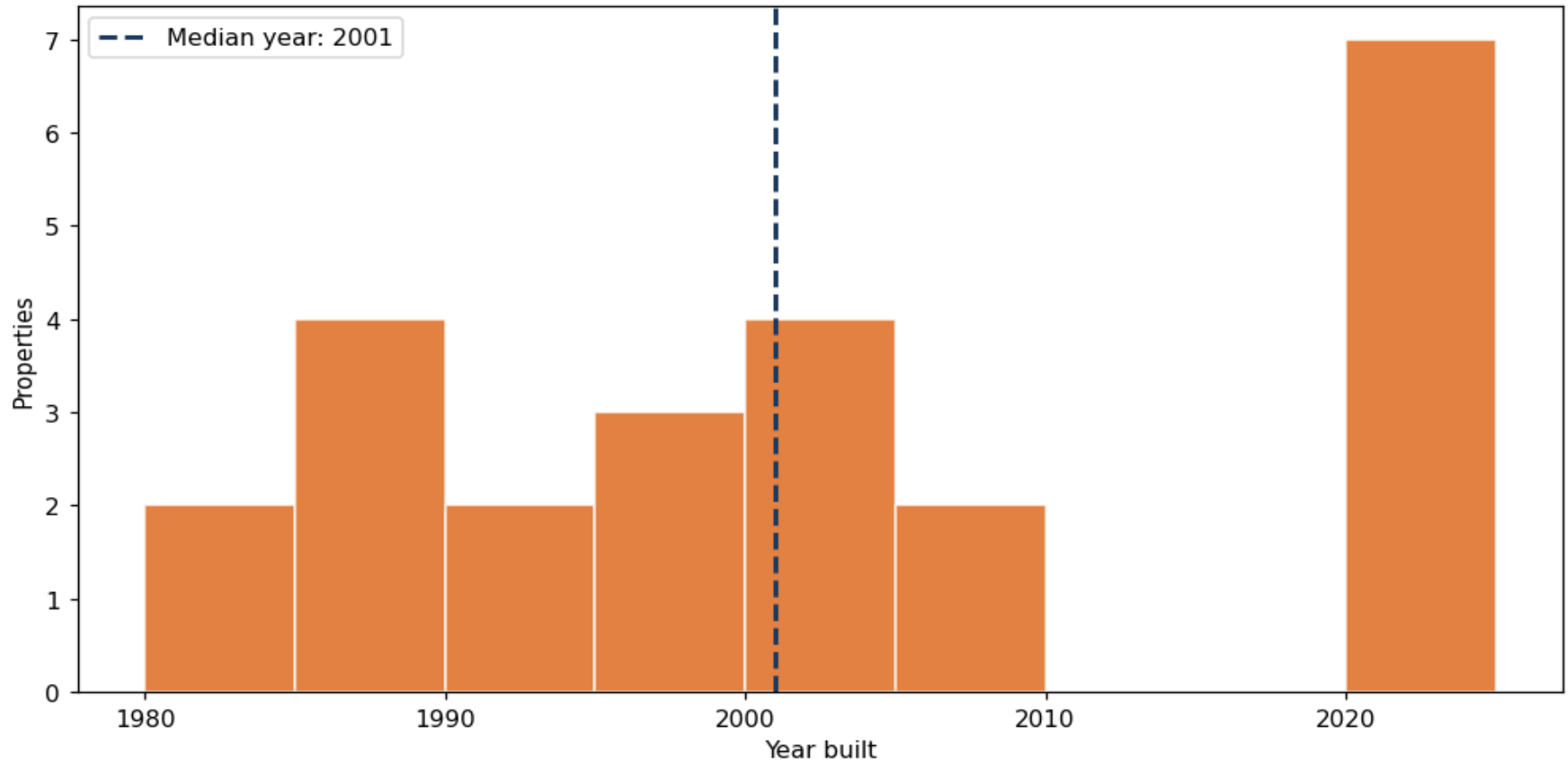
**Building size vs. market value (n=22, outliers trimmed)**



### Top property types by count



**Year built distribution (5-year buckets)**



**Market value vs. assessed value (gap = untaxed appreciation)**

