

Pinellas Property Market Report

4,602 matching properties • June 01, 2026

Filters applied	Headline numbers
City: Palm Harbor	Properties matched: 4,602
Property type: Condominium	Median market value: \$195,292
	Mean market value: \$212,451
	Min / Max: \$76,004 / \$890,647
	Mean square footage: 1,089

Top 200 properties by market value

Address	City	Type	Market Value	Sq Ft	Year	Annual Tax
36750 US HIGHWAY 19 N # 15-301	Palm Harbor	Condominium	\$890,647	3,715	1972	\$15,025
36750 US HIGHWAY 19 N # 28-2003	Palm Harbor	Condominium	\$752,821	2,765	1986	\$12,254
36750 US HIGHWAY 19 N # 28-2011	Palm Harbor	Condominium	\$602,361	2,000	1986	\$9,614
36750 US HIGHWAY 19 # 26-103	Palm Harbor	Condominium	\$599,002	1,715	1980	\$10,544
36750 US HIGHWAY 19 # 26-304	Palm Harbor	Condominium	\$584,461	1,715	1980	\$10,071
36750 US HIGHWAY 19 # 26-301	Palm Harbor	Condominium	\$574,490	1,715	1980	\$10,071
36750 US HIGHWAY 19 N # 5-113	Palm Harbor	Condominium	\$548,344	1,660	1971	\$9,204
36750 US HIGHWAY 19 # 27-102	Palm Harbor	Condominium	\$548,316	1,715	1981	\$9,663
36750 US HIGHWAY 19 # 25-102	Palm Harbor	Condominium	\$543,920	1,660	1976	\$8,871
36750 US HIGHWAY 19 # 27-204	Palm Harbor	Condominium	\$538,345	1,715	1981	\$9,491
36750 US HIGHWAY 19 # 25-301	Palm Harbor	Condominium	\$536,682	1,660	1976	\$8,947
36750 US HIGHWAY 19 # 27-101	Palm Harbor	Condominium	\$530,867	1,715	1981	\$9,520
36750 US HIGHWAY 19 # 27-301	Palm Harbor	Condominium	\$523,388	1,715	1981	\$9,198

Address	City	Type	Market Value	Sq Ft	Year	Annual Tax
36750 US HIGHWAY 19 # 27-303	Palm Harbor	Condominium	\$523,388	1,715	1981	\$9,198
36750 US HIGHWAY 19 # 26-303	Palm Harbor	Condominium	\$522,558	1,715	1980	\$9,169
36750 US HIGHWAY 19 # 25-201	Palm Harbor	Condominium	\$521,803	1,660	1976	\$8,850
36750 US HIGHWAY 19 N # 11-112	Palm Harbor	Condominium	\$520,484	1,660	1972	\$8,627
36750 US HIGHWAY 19 N # 11-113	Palm Harbor	Condominium	\$515,256	1,660	1972	\$8,690
36750 US HIGHWAY 19 N # 14-103	Palm Harbor	Condominium	\$515,256	1,660	1972	\$8,690
36750 US HIGHWAY 19 # 26-302	Palm Harbor	Condominium	\$513,002	1,715	1980	\$9,005
36750 US HIGHWAY 19 N # 4-140	Palm Harbor	Condominium	\$495,099	1,660	1971	\$8,469
36750 US HIGHWAY 19 # 22-103	Palm Harbor	Condominium	\$493,998	1,660	1974	\$8,669
36750 US HIGHWAY 19 N # 18-103	Palm Harbor	Condominium	\$492,505	1,660	1973	\$7,494
36750 US HIGHWAY 19 # 27-103	Palm Harbor	Condominium	\$492,229	1,715	1981	\$8,826
36750 US HIGHWAY 19 # 26-101	Palm Harbor	Condominium	\$490,983	1,715	1980	\$8,797
36750 US HIGHWAY 19 N # 14-112	Palm Harbor	Condominium	\$490,323	1,660	1972	\$8,267
36750 US HIGHWAY 19 N # 10-103	Palm Harbor	Condominium	\$490,208	1,660	1972	\$7,821
36750 US HIGHWAY 19 # 25-304	Palm Harbor	Condominium	\$490,034	1,660	1976	\$8,165
36750 US HIGHWAY 19 # 25-103	Palm Harbor	Condominium	\$489,230	1,660	1976	\$8,199
36750 US HIGHWAY 19 # 27-104	Palm Harbor	Condominium	\$488,074	1,715	1981	\$8,754
36750 US HIGHWAY 19 N # 13-301	Palm Harbor	Condominium	\$486,654	1,660	1972	\$8,393
36750 US HIGHWAY 19 # 26-102	Palm Harbor	Condominium	\$485,582	1,715	1980	\$8,704
36750 US HIGHWAY 19 # 25-101	Palm Harbor	Condominium	\$484,405	1,660	1976	\$8,040
36750 US HIGHWAY 19 N # 12-212	Palm Harbor	Condominium	\$482,683	1,660	1972	\$7,436
36750 US HIGHWAY 19 # 26-203	Palm Harbor	Condominium	\$481,446	1,715	1980	\$8,626
36750 US HIGHWAY 19 # 27-201	Palm Harbor	Condominium	\$481,427	1,715	1981	\$8,632
36750 US HIGHWAY 19 # 27-203	Palm Harbor	Condominium	\$481,427	1,715	1981	\$8,632
36750 US HIGHWAY 19 # 26-201	Palm Harbor	Condominium	\$480,596	1,715	1980	\$8,611

Address	City	Type	Market Value	Sq Ft	Year	Annual Tax
36750 US HIGHWAY 19 N # 13-101	Palm Harbor	Condominium	\$479,013	1,660	1972	\$8,241
36750 US HIGHWAY 19 # 27-302	Palm Harbor	Condominium	\$476,442	1,715	1981	\$8,367
36750 US HIGHWAY 19 # 27-304	Palm Harbor	Condominium	\$476,442	1,715	1981	\$8,367
36750 US HIGHWAY 19 # 24-103	Palm Harbor	Condominium	\$475,960	1,660	1975	\$7,894
36750 US HIGHWAY 19 N # 3-124	Palm Harbor	Condominium	\$475,791	1,660	1970	\$8,142
36750 US HIGHWAY 19 N # 10-203	Palm Harbor	Condominium	\$474,122	1,660	1972	\$7,593
36750 US HIGHWAY 19 N # 3-213	Palm Harbor	Condominium	\$472,634	1,660	1970	\$7,881
36750 US HIGHWAY 19 N # 15-205	Palm Harbor	Condominium	\$471,936	1,660	1972	\$8,129
36750 US HIGHWAY 19 # 25-303	Palm Harbor	Condominium	\$470,732	1,660	1976	\$7,984
36750 US HIGHWAY 19 N # 19-101	Palm Harbor	Condominium	\$470,568	1,660	1973	\$7,520
36750 US HIGHWAY 19 N # 15-101	Palm Harbor	Condominium	\$469,764	1,660	1972	\$7,929
36750 US HIGHWAY 19 N # 5-112	Palm Harbor	Condominium	\$469,526	1,660	1971	\$8,026
36750 US HIGHWAY 19 N # 5-102	Palm Harbor	Condominium	\$469,526	1,660	1971	\$8,026
36750 US HIGHWAY 19 N # 4-139	Palm Harbor	Condominium	\$469,465	1,660	1971	\$7,886
36750 US HIGHWAY 19 N # 12-103	Palm Harbor	Condominium	\$468,608	1,660	1972	\$7,907
36750 US HIGHWAY 19 N # 11-103	Palm Harbor	Condominium	\$468,608	1,660	1972	\$7,907
36750 US HIGHWAY 19 N # 14-113	Palm Harbor	Condominium	\$468,608	1,660	1972	\$7,907
36750 US HIGHWAY 19 N # 12-113	Palm Harbor	Condominium	\$468,608	1,660	1972	\$7,907
36750 US HIGHWAY 19 N # 12-203	Palm Harbor	Condominium	\$466,195	1,660	1972	\$8,025
4267 PRESERVE PL	Palm Harbor	Condominium	\$466,046	2,295	1999	\$7,783
36750 US HIGHWAY 19 N # 5-202	Palm Harbor	Condominium	\$462,287	1,660	1971	\$7,936
36750 US HIGHWAY 19 N # 15-305	Palm Harbor	Condominium	\$461,882	1,660	1972	\$7,963
36750 US HIGHWAY 19 N # 12-102	Palm Harbor	Condominium	\$460,164	1,660	1972	\$7,761
36750 US HIGHWAY 19 N # 12-112	Palm Harbor	Condominium	\$460,164	1,660	1972	\$7,761
4262 PRESERVE PL	Palm Harbor	Condominium	\$460,085	2,295	1997	\$7,646

Address	City	Type	Market Value	Sq Ft	Year	Annual Tax
36750 US HIGHWAY 19 N # 4-145	Palm Harbor	Condominium	\$458,504	1,660	1971	\$7,700
36750 US HIGHWAY 19 # 23-201	Palm Harbor	Condominium	\$455,398	1,660	1974	\$8,172
36750 US HIGHWAY 19 # 22-203	Palm Harbor	Condominium	\$454,588	1,660	1974	\$8,157
36750 US HIGHWAY 19 N # 4-218	Palm Harbor	Condominium	\$454,081	1,660	1971	\$7,929
36750 US HIGHWAY 19 N # 17-203	Palm Harbor	Condominium	\$453,498	1,660	1973	\$7,397
36750 US HIGHWAY 19 N # 4-214	Palm Harbor	Condominium	\$452,576	1,660	1971	\$7,892
36750 US HIGHWAY 19 N # 13-202	Palm Harbor	Condominium	\$452,472	1,660	1972	\$7,797
36750 US HIGHWAY 19 # 23-105	Palm Harbor	Condominium	\$450,678	1,660	1974	\$7,908
36750 US HIGHWAY 19 N # 3-126	Palm Harbor	Condominium	\$450,517	1,660	1970	\$7,701
36750 US HIGHWAY 19 N # 4-118	Palm Harbor	Condominium	\$450,462	1,660	1971	\$7,700
36750 US HIGHWAY 19 N # 9-102	Palm Harbor	Condominium	\$449,416	1,660	1972	\$7,450
36750 US HIGHWAY 19 # 22-112	Palm Harbor	Condominium	\$449,361	1,660	1974	\$7,886
36750 US HIGHWAY 19 N # 5-103	Palm Harbor	Condominium	\$449,017	1,660	1971	\$7,673
36750 US HIGHWAY 19 # 26-104	Palm Harbor	Condominium	\$446,944	1,715	1980	\$8,010
36750 US HIGHWAY 19 N # 3-113	Palm Harbor	Condominium	\$446,898	1,660	1970	\$7,652
36750 US HIGHWAY 19 N # 2-103	Palm Harbor	Condominium	\$446,320	1,660	1970	\$7,641
36750 US HIGHWAY 19 N # 2-115	Palm Harbor	Condominium	\$446,320	1,660	1970	\$7,641
36750 US HIGHWAY 19 N # 5-213	Palm Harbor	Condominium	\$445,800	1,660	1971	\$7,790
36750 US HIGHWAY 19 # 25-202	Palm Harbor	Condominium	\$445,800	1,660	1976	\$7,562
36750 US HIGHWAY 19 N # 15-105	Palm Harbor	Condominium	\$445,797	1,660	1972	\$7,519
36750 US HIGHWAY 19 N # 13-105	Palm Harbor	Condominium	\$445,624	1,660	1972	\$7,516
36750 US HIGHWAY 19 # 25-203	Palm Harbor	Condominium	\$445,397	1,660	1976	\$7,562
36750 US HIGHWAY 19 # 23-301	Palm Harbor	Condominium	\$445,345	1,660	1974	\$7,992
36750 US HIGHWAY 19 N # 19-105	Palm Harbor	Condominium	\$444,877	1,660	1973	\$7,108
36750 US HIGHWAY 19 N # 8-112	Palm Harbor	Condominium	\$443,273	1,660	1971	\$7,075

Address	City	Type	Market Value	Sq Ft	Year	Annual Tax
36750 US HIGHWAY 19 N # 19-302	Palm Harbor	Condominium	\$443,223	1,660	1973	\$7,104
36750 US HIGHWAY 19 N # 13-302	Palm Harbor	Condominium	\$442,821	1,660	1972	\$7,638
36750 US HIGHWAY 19 N # 4-314	Palm Harbor	Condominium	\$442,522	1,660	1971	\$7,726
36750 US HIGHWAY 19 N # 15-302	Palm Harbor	Condominium	\$442,243	1,660	1972	\$7,627
36750 US HIGHWAY 19 N # 2-102	Palm Harbor	Condominium	\$441,896	1,660	1970	\$7,551
36750 US HIGHWAY 19 N # 13-201	Palm Harbor	Condominium	\$441,213	1,660	1972	\$7,756
36750 US HIGHWAY 19 N # 9-113	Palm Harbor	Condominium	\$440,697	1,660	1972	\$7,449
36750 US HIGHWAY 19 # 25-104	Palm Harbor	Condominium	\$440,572	1,660	1976	\$7,312
36750 US HIGHWAY 19 N # 9-202	Palm Harbor	Condominium	\$439,765	1,660	1972	\$7,305
36750 US HIGHWAY 19 N # 10-202	Palm Harbor	Condominium	\$439,136	1,660	1972	\$7,039
36750 US HIGHWAY 19 # 27-202	Palm Harbor	Condominium	\$438,219	1,715	1981	\$7,859
36750 US HIGHWAY 19 # 24-113	Palm Harbor	Condominium	\$437,757	1,660	1975	\$7,257
36750 US HIGHWAY 19 # 26-204	Palm Harbor	Condominium	\$437,389	1,715	1980	\$7,838
36750 US HIGHWAY 19 # 26-202	Palm Harbor	Condominium	\$437,389	1,715	1980	\$7,838
36750 US HIGHWAY 19 N # 17-103	Palm Harbor	Condominium	\$436,608	1,660	1973	\$7,113
36750 US HIGHWAY 19 N # 15-102	Palm Harbor	Condominium	\$435,985	1,660	1972	\$7,499
36750 US HIGHWAY 19 N # 13-102	Palm Harbor	Condominium	\$435,985	1,660	1972	\$7,499
36750 US HIGHWAY 19 N # 18-212	Palm Harbor	Condominium	\$433,793	1,660	1973	\$7,078
36750 US HIGHWAY 19 N # 9-226	Palm Harbor	Condominium	\$433,628	1,660	1972	\$7,340
36750 US HIGHWAY 19 N # 3-111	Palm Harbor	Condominium	\$432,871	1,660	1970	\$8,350
36750 US HIGHWAY 19 N # 15-201	Palm Harbor	Condominium	\$432,189	1,660	1972	\$7,447
36750 US HIGHWAY 19 # 21-102	Palm Harbor	Condominium	\$432,081	1,660	1974	\$7,572
36750 US HIGHWAY 19 # 21-101	Palm Harbor	Condominium	\$432,081	1,660	1974	\$7,572
36750 US HIGHWAY 19 N # 3-226	Palm Harbor	Condominium	\$431,958	1,660	1970	\$8,045
36750 US HIGHWAY 19 N # 9-126	Palm Harbor	Condominium	\$431,616	1,660	1972	\$7,153

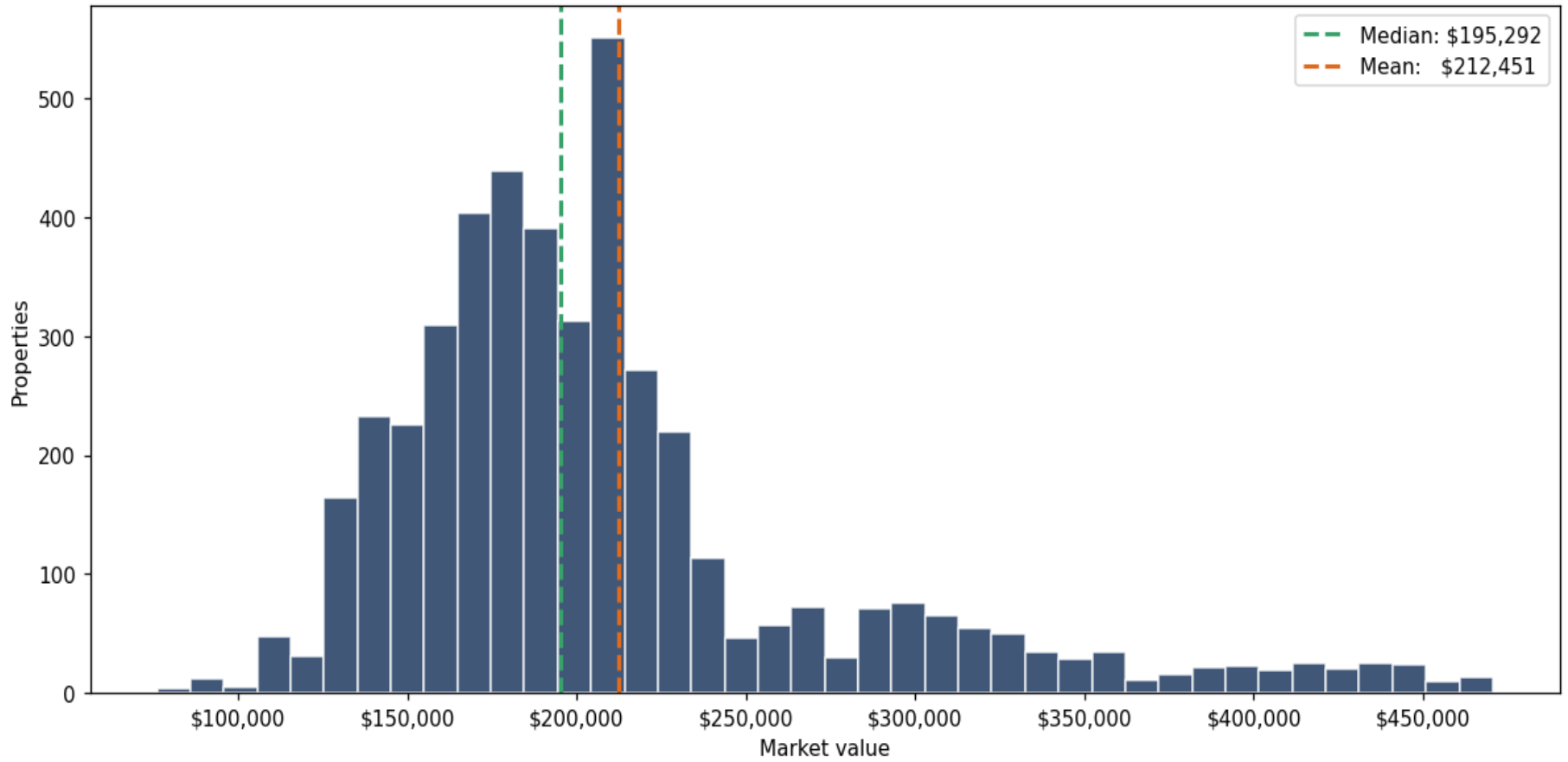
Address	City	Type	Market Value	Sq Ft	Year	Annual Tax
36750 US HIGHWAY 19 N # 14-213	Palm Harbor	Condominium	\$431,611	1,660	1972	\$7,436
36750 US HIGHWAY 19 N # 11-213	Palm Harbor	Condominium	\$431,611	1,660	1972	\$7,436
36750 US HIGHWAY 19 N # 12-213	Palm Harbor	Condominium	\$431,611	1,660	1972	\$7,436
36750 US HIGHWAY 19 N # 11-203	Palm Harbor	Condominium	\$431,611	1,660	1972	\$7,436
36750 US HIGHWAY 19 N # 14-203	Palm Harbor	Condominium	\$431,611	1,660	1972	\$7,436
36750 US HIGHWAY 19 N # 19-205	Palm Harbor	Condominium	\$431,607	1,660	1973	\$7,039
36750 US HIGHWAY 19 # 23-101	Palm Harbor	Condominium	\$430,868	1,660	1974	\$7,548
36750 US HIGHWAY 19 # 22-113	Palm Harbor	Condominium	\$430,058	1,660	1974	\$7,533
36750 US HIGHWAY 19 N # 20-101	Palm Harbor	Condominium	\$429,953	1,660	1973	\$6,876
36750 US HIGHWAY 19 N # 17-113	Palm Harbor	Condominium	\$428,566	1,660	1973	\$6,849
36750 US HIGHWAY 19 N # 18-113	Palm Harbor	Condominium	\$428,566	1,660	1973	\$6,849
36750 US HIGHWAY 19 N # 18-112	Palm Harbor	Condominium	\$428,566	1,660	1973	\$6,849
36750 US HIGHWAY 19 N # 3-202	Palm Harbor	Condominium	\$428,563	1,660	1970	\$7,500
36750 US HIGHWAY 19 N # 4-114	Palm Harbor	Condominium	\$427,241	1,660	1971	\$7,304
36750 US HIGHWAY 19 N # 8-203	Palm Harbor	Condominium	\$427,188	1,660	1971	\$6,965
4242 PRESERVE PL	Palm Harbor	Condominium	\$426,402	2,295	1999	\$7,088
36750 US HIGHWAY 19 N # 11-102	Palm Harbor	Condominium	\$426,384	1,660	1972	\$7,193
36750 US HIGHWAY 19 N # 14-102	Palm Harbor	Condominium	\$426,384	1,660	1972	\$7,193
36750 US HIGHWAY 19 N # 10-113	Palm Harbor	Condominium	\$426,268	1,660	1972	\$6,803
4228 PRESERVE PL	Palm Harbor	Condominium	\$426,056	2,295	1998	\$7,083
36750 US HIGHWAY 19 N # 4-323	Palm Harbor	Condominium	\$424,725	1,660	1971	\$7,409
36750 US HIGHWAY 19 N # 8-113	Palm Harbor	Condominium	\$423,569	1,660	1971	\$6,771
36750 US HIGHWAY 19 N # 8-103	Palm Harbor	Condominium	\$423,569	1,660	1971	\$6,771
36750 US HIGHWAY 19 N # 10-112	Palm Harbor	Condominium	\$423,453	1,660	1972	\$6,754
36750 US HIGHWAY 19 # 21-305	Palm Harbor	Condominium	\$423,104	1,660	1974	\$7,592

Address	City	Type	Market Value	Sq Ft	Year	Annual Tax
4252 PRESERVE PL	Palm Harbor	Condominium	\$422,930	2,295	2000	\$7,035
36750 US HIGHWAY 19 N # 2-215	Palm Harbor	Condominium	\$418,974	1,660	1970	\$7,468
4248 PRESERVE PL	Palm Harbor	Condominium	\$418,417	2,295	1999	\$6,961
36750 US HIGHWAY 19 N # 9-111	Palm Harbor	Condominium	\$417,648	1,660	1972	\$7,055
4268 PRESERVE PL	Palm Harbor	Condominium	\$416,333	2,295	1997	\$6,923
36750 US HIGHWAY 19 N # 9-216	Palm Harbor	Condominium	\$415,765	1,660	1972	\$7,048
36750 US HIGHWAY 19 N # 20-105	Palm Harbor	Condominium	\$415,522	1,660	1973	\$6,769
36750 US HIGHWAY 19 # 21-202	Palm Harbor	Condominium	\$414,840	1,660	1974	\$7,439
4258 PRESERVE PL	Palm Harbor	Condominium	\$414,597	2,295	2000	\$6,897
36750 US HIGHWAY 19 N # 2-114	Palm Harbor	Condominium	\$414,551	1,660	1970	\$7,225
4257 PRESERVE PL	Palm Harbor	Condominium	\$413,902	2,295	1999	\$6,881
4208 PRESERVE PL	Palm Harbor	Condominium	\$413,902	2,295	1999	\$6,881
4261 PRESERVE PL	Palm Harbor	Condominium	\$413,902	2,295	1999	\$6,881
4232 PRESERVE PL	Palm Harbor	Condominium	\$413,902	2,295	1999	\$6,881
4251 PRESERVE PL	Palm Harbor	Condominium	\$413,902	2,295	1999	\$6,881
4202 PRESERVE PL	Palm Harbor	Condominium	\$413,902	2,295	1999	\$6,881
4238 PRESERVE PL	Palm Harbor	Condominium	\$413,902	2,295	1999	\$6,881
36750 US HIGHWAY 19 N # 4-318	Palm Harbor	Condominium	\$413,466	1,660	1971	\$7,375
36750 US HIGHWAY 19 N # 5-203	Palm Harbor	Condominium	\$413,227	1,660	1971	\$7,215
36750 US HIGHWAY 19 N # 4-223	Palm Harbor	Condominium	\$413,063	1,660	1971	\$7,215
4203 PRESERVE PL	Palm Harbor	Condominium	\$412,860	2,295	1998	\$6,865
4212 PRESERVE PL	Palm Harbor	Condominium	\$412,860	2,295	1998	\$6,865
4209 PRESERVE PL	Palm Harbor	Condominium	\$412,860	2,295	1998	\$6,865
4222 PRESERVE PL	Palm Harbor	Condominium	\$412,860	2,295	1998	\$6,865
4218 PRESERVE PL	Palm Harbor	Condominium	\$412,860	2,295	1998	\$7,083

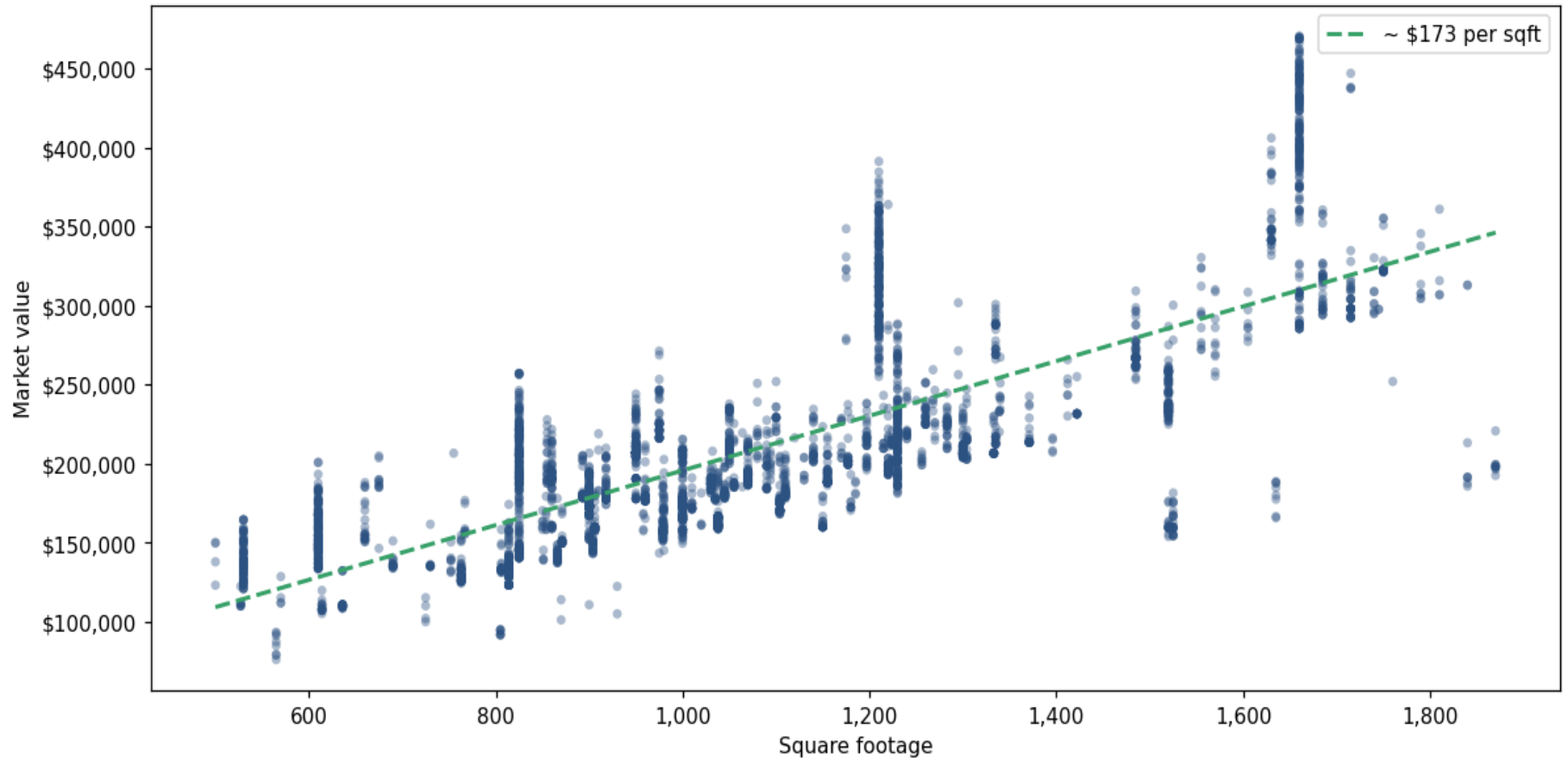
Address	City	Type	Market Value	Sq Ft	Year	Annual Tax
36750 US HIGHWAY 19 N # 17-212	Palm Harbor	Condominium	\$412,480	1,660	1973	\$6,413
36750 US HIGHWAY 19 N # 2-203	Palm Harbor	Condominium	\$411,334	1,660	1970	\$7,184
36750 US HIGHWAY 19 # 24-213	Palm Harbor	Condominium	\$411,216	1,660	1975	\$7,098
36750 US HIGHWAY 19 N # 3-313	Palm Harbor	Condominium	\$411,108	1,660	1970	\$7,319
36750 US HIGHWAY 19 N # 13-205	Palm Harbor	Condominium	\$410,236	1,660	1972	\$7,066
36750 US HIGHWAY 19 N # 4-123	Palm Harbor	Condominium	\$409,846	1,660	1971	\$7,014
36750 US HIGHWAY 19 N # 13-305	Palm Harbor	Condominium	\$409,431	1,660	1972	\$7,197
36750 US HIGHWAY 19 # 21-105	Palm Harbor	Condominium	\$409,029	1,660	1974	\$7,170
36750 US HIGHWAY 19 # 24-112	Palm Harbor	Condominium	\$406,390	1,660	1975	\$6,869
1313 WESTLAKE BLVD	Palm Harbor	Condominium	\$406,031	1,630	1984	\$6,172
36750 US HIGHWAY 19 N # 3-102	Palm Harbor	Condominium	\$405,641	1,660	1970	\$6,932
36750 US HIGHWAY 19 # 25-204	Palm Harbor	Condominium	\$405,586	1,660	1976	\$6,876
36750 US HIGHWAY 19 N # 9-213	Palm Harbor	Condominium	\$405,310	1,660	1972	\$6,999
36750 US HIGHWAY 19 N # 20-302	Palm Harbor	Condominium	\$405,021	1,660	1973	\$6,612
36750 US HIGHWAY 19 N # 20-201	Palm Harbor	Condominium	\$403,412	1,660	1973	\$6,723
36750 US HIGHWAY 19 N # 19-201	Palm Harbor	Condominium	\$403,412	1,660	1973	\$6,723
36750 US HIGHWAY 19 # 22-213	Palm Harbor	Condominium	\$403,115	1,660	1974	\$7,367
36750 US HIGHWAY 19 # 24-203	Palm Harbor	Condominium	\$402,771	1,660	1975	\$6,834
36750 US HIGHWAY 19 N # 17-213	Palm Harbor	Condominium	\$402,024	1,660	1973	\$6,697
36750 US HIGHWAY 19 # 24-212	Palm Harbor	Condominium	\$401,565	1,660	1975	\$6,800
36750 US HIGHWAY 19 N # 9-116	Palm Harbor	Condominium	\$400,886	1,660	1972	\$6,777
36750 US HIGHWAY 19 N # 15-202	Palm Harbor	Condominium	\$400,823	1,660	1972	\$7,045
36750 US HIGHWAY 19 N # 14-202	Palm Harbor	Condominium	\$400,245	1,660	1972	\$7,034
36750 US HIGHWAY 19 N # 11-212	Palm Harbor	Condominium	\$400,245	1,660	1972	\$7,034
36750 US HIGHWAY 19 N # 12-202	Palm Harbor	Condominium	\$400,245	1,660	1972	\$7,034

Address	City	Type	Market Value	Sq Ft	Year	Annual Tax
36750 US HIGHWAY 19 N # 14-212	Palm Harbor	Condominium	\$400,245	1,660	1972	\$7,034
36750 US HIGHWAY 19 N # 11-202	Palm Harbor	Condominium	\$400,245	1,660	1972	\$7,034
36750 US HIGHWAY 19 # 22-102	Palm Harbor	Condominium	\$398,692	1,660	1974	\$7,131
36750 US HIGHWAY 19 # 24-102	Palm Harbor	Condominium	\$398,347	1,660	1975	\$6,606
1367 WESTLAKE BLVD	Palm Harbor	Condominium	\$398,181	1,630	1983	\$6,055
36750 US HIGHWAY 19 N # 8-213	Palm Harbor	Condominium	\$397,832	1,660	1971	\$6,618
36750 US HIGHWAY 19 N # 17-102	Palm Harbor	Condominium	\$397,601	1,660	1973	\$6,725
36750 US HIGHWAY 19 N # 17-112	Palm Harbor	Condominium	\$397,601	1,660	1973	\$6,475
36750 US HIGHWAY 19 # 21-201	Palm Harbor	Condominium	\$397,146	1,660	1974	\$7,106
36750 US HIGHWAY 19 # 25-302	Palm Harbor	Condominium	\$397,141	1,660	1976	\$6,730
1377 WESTLAKE BLVD	Palm Harbor	Condominium	\$395,162	1,630	1984	\$6,003
36750 US HIGHWAY 19 N # 19-301	Palm Harbor	Condominium	\$394,967	1,660	1973	\$6,585

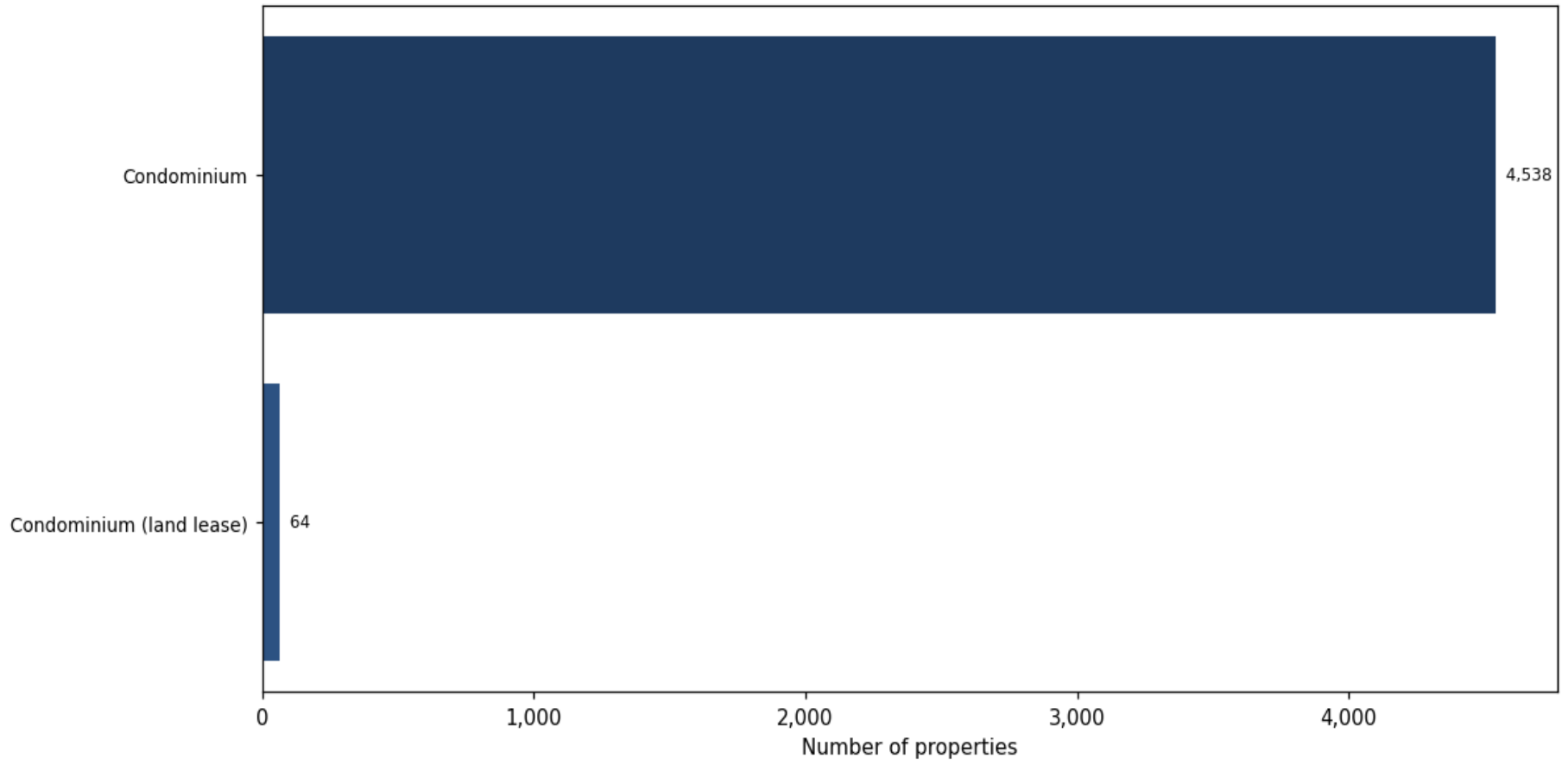
Market value distribution (n=4,602, top 1% trimmed for readability)



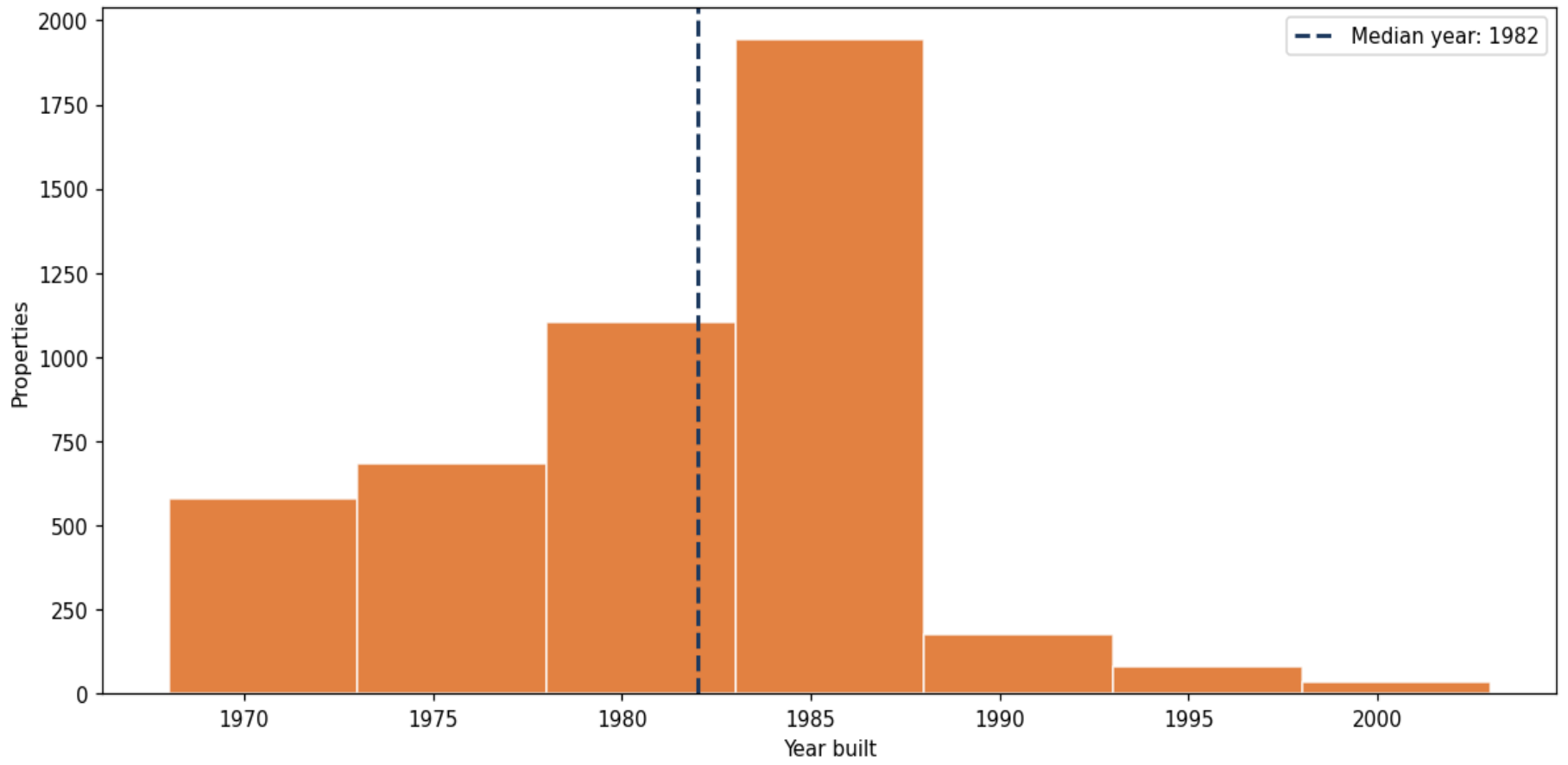
Building size vs. market value (n=4,517, outliers trimmed)



Top property types by count



Year built distribution (5-year buckets)



Market value vs. assessed value (gap = untaxed appreciation)

