

Pinellas Property Market Report

1,276 matching properties • May 30, 2026

Filters applied	Headline numbers
City: Madeira Beach	Properties matched: 1,276
Property type: Condominium	Median market value: \$634,679
	Mean market value: \$692,438
	Min / Max: \$140,250 / \$2,588,781
	Mean square footage: 1,387

Top 200 properties by market value

Address	City	Type	Market Value	Sq Ft	Year	Annual Tax
14010 GULF BLVD # 201	Madeira Beach	Condominium	\$2,588,781	3,034	2015	\$35,120
14010 GULF BLVD # 402	Madeira Beach	Condominium	\$2,527,234	3,011	2015	\$34,368
14010 GULF BLVD # 303	Madeira Beach	Condominium	\$2,508,952	3,011	2015	\$34,291
13600 GULF BLVD # 700A	Madeira Beach	Condominium	\$2,485,890	3,186	2007	\$36,207
14010 GULF BLVD # 404	Madeira Beach	Condominium	\$2,439,559	3,034	2015	\$32,815
14010 GULF BLVD # 401	Madeira Beach	Condominium	\$2,439,559	3,034	2015	\$32,815
14010 GULF BLVD # 304	Madeira Beach	Condominium	\$2,415,610	3,034	2015	\$32,660
14010 GULF BLVD # 301	Madeira Beach	Condominium	\$2,415,610	3,034	2015	\$32,660
14010 GULF BLVD # 202	Madeira Beach	Condominium	\$2,382,800	3,011	2015	\$31,746
14010 GULF BLVD # 403	Madeira Beach	Condominium	\$2,382,800	3,011	2015	\$31,900
14010 GULF BLVD # 203	Madeira Beach	Condominium	\$2,382,800	3,011	2015	\$31,746
14010 GULF BLVD # 302	Madeira Beach	Condominium	\$2,360,861	3,011	2015	\$31,746
13630 GULF BLVD # 700C	Madeira Beach	Condominium	\$2,354,341	3,186	2007	\$34,480

Address	City	Type	Market Value	Sq Ft	Year	Annual Tax
13620 GULF BLVD # 700B	Madeira Beach	Condominium	\$2,354,341	3,186	2007	\$34,466
13630 GULF BLVD # 500C	Madeira Beach	Condominium	\$2,329,192	3,186	2007	\$33,813
13600 GULF BLVD # 600A	Madeira Beach	Condominium	\$2,329,192	3,186	2007	\$34,085
13620 GULF BLVD # 600B	Madeira Beach	Condominium	\$2,329,192	3,186	2007	\$34,085
13630 GULF BLVD # 600C	Madeira Beach	Condominium	\$2,329,192	3,186	2007	\$34,085
13620 GULF BLVD # 500B	Madeira Beach	Condominium	\$2,305,978	3,186	2007	\$33,786
13600 GULF BLVD # 500A	Madeira Beach	Condominium	\$2,305,978	3,186	2007	\$33,786
13600 GULF BLVD # 400A	Madeira Beach	Condominium	\$2,284,697	3,186	2007	\$33,324
13620 GULF BLVD # 400B	Madeira Beach	Condominium	\$2,284,697	3,186	2007	\$33,324
13630 GULF BLVD # 400C	Madeira Beach	Condominium	\$2,284,697	3,186	2007	\$33,324
13630 GULF BLVD # 200C	Madeira Beach	Condominium	\$2,264,677	3,186	2007	\$33,187
13620 GULF BLVD # 200B	Madeira Beach	Condominium	\$2,264,677	3,186	2007	\$33,187
13600 GULF BLVD # 300A	Madeira Beach	Condominium	\$2,261,483	3,186	2007	\$33,133
13630 GULF BLVD # 300C	Madeira Beach	Condominium	\$2,261,483	3,186	2007	\$33,133
13910 GULF BLVD # 302	Madeira Beach	Condominium	\$2,071,712	3,825	1999	\$30,512
13620 GULF BLVD # 300B	Madeira Beach	Condominium	\$1,913,680	3,186	2007	\$33,133
13700 GULF BLVD # 400	Madeira Beach	Condominium	\$1,898,793	4,509	2017	\$33,172
15208 GULF BLVD # 201	Madeira Beach	Condominium	\$1,759,658	3,400	2005	\$26,968
15208 GULF BLVD # 601	Madeira Beach	Condominium	\$1,720,956	3,400	2005	\$26,503
15208 GULF BLVD # 501	Madeira Beach	Condominium	\$1,704,440	3,400	2005	\$26,242
15208 GULF BLVD # 401	Madeira Beach	Condominium	\$1,686,272	3,400	2005	\$25,894
15208 GULF BLVD # 301	Madeira Beach	Condominium	\$1,669,756	3,400	2005	\$25,719
15208 GULF BLVD # 206	Madeira Beach	Condominium	\$1,653,520	2,760	2005	\$25,237
15208 GULF BLVD # 209	Madeira Beach	Condominium	\$1,622,682	2,820	2005	\$26,337
15208 GULF BLVD # 609	Madeira Beach	Condominium	\$1,580,804	2,820	2005	\$25,858

Address	City	Type	Market Value	Sq Ft	Year	Annual Tax
15208 GULF BLVD # 509	Madeira Beach	Condominium	\$1,564,366	2,820	2005	\$25,594
15208 GULF BLVD # 203	Madeira Beach	Condominium	\$1,556,201	2,760	2005	\$25,237
15208 GULF BLVD # 207	Madeira Beach	Condominium	\$1,556,201	2,760	2005	\$25,237
15208 GULF BLVD # 204	Madeira Beach	Condominium	\$1,556,201	2,760	2005	\$25,237
15208 GULF BLVD # 409	Madeira Beach	Condominium	\$1,549,297	2,820	2005	\$25,232
15208 GULF BLVD # 309	Madeira Beach	Condominium	\$1,534,229	2,820	2005	\$25,088
15208 GULF BLVD # 607	Madeira Beach	Condominium	\$1,512,312	2,760	2005	\$24,719
15208 GULF BLVD # 603	Madeira Beach	Condominium	\$1,512,312	2,760	2005	\$24,719
15208 GULF BLVD # 604	Madeira Beach	Condominium	\$1,512,312	2,760	2005	\$24,719
15208 GULF BLVD # 606	Madeira Beach	Condominium	\$1,512,312	2,760	2005	\$24,719
15208 GULF BLVD # 503	Madeira Beach	Condominium	\$1,497,563	2,760	2005	\$24,460
15208 GULF BLVD # 507	Madeira Beach	Condominium	\$1,497,563	2,760	2005	\$24,460
15208 GULF BLVD # 506	Madeira Beach	Condominium	\$1,497,563	2,760	2005	\$24,460
15208 GULF BLVD # 504	Madeira Beach	Condominium	\$1,497,563	2,760	2005	\$24,460
15208 GULF BLVD # 303	Madeira Beach	Condominium	\$1,489,520	2,760	2005	\$24,389
13910 GULF BLVD # 102	Madeira Beach	Condominium	\$1,486,549	3,050	1999	\$25,835
15208 GULF BLVD # 407	Madeira Beach	Condominium	\$1,482,816	2,760	2005	\$24,106
15208 GULF BLVD # 406	Madeira Beach	Condominium	\$1,482,816	2,760	2005	\$24,106
15208 GULF BLVD # 403	Madeira Beach	Condominium	\$1,482,816	2,760	2005	\$24,106
15208 GULF BLVD # 404	Madeira Beach	Condominium	\$1,482,816	2,760	2005	\$24,106
15208 GULF BLVD # 306	Madeira Beach	Condominium	\$1,468,068	2,760	2005	\$23,989
15208 GULF BLVD # 304	Madeira Beach	Condominium	\$1,468,068	2,760	2005	\$23,989
15208 GULF BLVD # 307	Madeira Beach	Condominium	\$1,468,068	2,760	2005	\$23,989
14010 GULF BLVD # 204	Madeira Beach	Condominium	\$1,452,235	3,034	2015	\$32,660
13706 GULF BLVD	Madeira Beach	Condominium	\$1,426,966	2,165	1992	\$22,271

Address	City	Type	Market Value	Sq Ft	Year	Annual Tax
13710 GULF BLVD	Madeira Beach	Condominium	\$1,426,966	2,165	1992	\$22,306
13000 GULF BLVD # 511	Madeira Beach	Condominium	\$1,361,771	2,050	1975	\$20,041
13704 GULF BLVD	Madeira Beach	Condominium	\$1,345,030	2,165	1992	\$21,003
15208 GULF BLVD # 408	Madeira Beach	Condominium	\$1,337,316	2,345	2005	\$22,264
15208 GULF BLVD # 208	Madeira Beach	Condominium	\$1,335,520	2,345	2005	\$21,810
15208 GULF BLVD # 305	Madeira Beach	Condominium	\$1,327,063	2,345	2005	\$22,204
15208 GULF BLVD # 202	Madeira Beach	Condominium	\$1,322,989	2,345	2005	\$21,810
13398 GULF LN # 201	Madeira Beach	Condominium	\$1,321,939	2,050	2002	\$19,918
15208 GULF BLVD # 608	Madeira Beach	Condominium	\$1,274,665	2,345	2005	\$21,183
15208 GULF BLVD # 602	Madeira Beach	Condominium	\$1,274,665	2,345	2005	\$21,183
15208 GULF BLVD # 605	Madeira Beach	Condominium	\$1,274,665	2,345	2005	\$21,183
15208 GULF BLVD # 502	Madeira Beach	Condominium	\$1,260,995	2,345	2005	\$20,982
15208 GULF BLVD # 508	Madeira Beach	Condominium	\$1,260,995	2,345	2005	\$20,982
15208 GULF BLVD # 505	Madeira Beach	Condominium	\$1,260,995	2,345	2005	\$20,982
15208 GULF BLVD # 402	Madeira Beach	Condominium	\$1,249,604	2,345	2005	\$20,662
15208 GULF BLVD # 405	Madeira Beach	Condominium	\$1,249,604	2,345	2005	\$20,662
13398 GULF LN # 101	Madeira Beach	Condominium	\$1,239,784	2,050	2002	\$18,448
15208 GULF BLVD # 308	Madeira Beach	Condominium	\$1,237,074	2,345	2005	\$20,562
15208 GULF BLVD # 302	Madeira Beach	Condominium	\$1,237,074	2,345	2005	\$20,562
15400 GULF BLVD # 1003	Madeira Beach	Condominium	\$1,225,637	1,835	1977	\$17,622
13398 GULF LN # 302	Madeira Beach	Condominium	\$1,224,137	2,010	2002	\$18,259
13910 GULF BLVD # 104	Madeira Beach	Condominium	\$1,214,562	2,060	1999	\$18,194
13398 GULF LN # 202	Madeira Beach	Condominium	\$1,204,609	2,010	2002	\$18,105
13700 GULF BLVD # 201	Madeira Beach	Condominium	\$1,171,920	2,502	2018	\$20,418
13700 GULF BLVD # 301	Madeira Beach	Condominium	\$1,159,766	2,502	2018	\$20,418

Address	City	Type	Market Value	Sq Ft	Year	Annual Tax
300 150TH AVE # 507	Madeira Beach	Condominium	\$1,155,051	2,125	2022	\$15,555
300 150TH AVE # 505	Madeira Beach	Condominium	\$1,155,051	2,125	2022	\$15,555
300 150TH AVE # 407	Madeira Beach	Condominium	\$1,150,420	2,125	2022	\$15,502
300 150TH AVE # 405	Madeira Beach	Condominium	\$1,150,420	2,125	2022	\$15,502
300 150TH AVE # 305	Madeira Beach	Condominium	\$1,144,087	2,125	2022	\$15,404
300 150TH AVE # 307	Madeira Beach	Condominium	\$1,144,087	2,125	2022	\$15,404
15400 GULF BLVD # 903	Madeira Beach	Condominium	\$1,140,957	1,835	1977	\$16,280
15400 GULF BLVD # 1002	Madeira Beach	Condominium	\$1,139,842	1,835	1977	\$16,483
15462 GULF BLVD # 904	Madeira Beach	Condominium	\$1,132,917	1,725	1978	\$15,170
13708 GULF BLVD	Madeira Beach	Condominium	\$1,131,319	2,165	1992	\$21,038
15400 GULF BLVD # 902	Madeira Beach	Condominium	\$1,129,814	1,835	1977	\$16,732
15400 GULF BLVD # 802	Madeira Beach	Condominium	\$1,119,787	1,835	1977	\$16,185
15400 GULF BLVD # 803	Madeira Beach	Condominium	\$1,119,787	1,835	1977	\$16,071
15400 GULF BLVD # 1001	Madeira Beach	Condominium	\$1,065,882	1,675	1977	\$15,670
13398 GULF LN # 301	Madeira Beach	Condominium	\$1,064,521	2,050	2002	\$19,830
15462 GULF BLVD # 1001	Madeira Beach	Condominium	\$1,057,335	1,725	1978	\$14,156
15462 GULF BLVD # 1006	Madeira Beach	Condominium	\$1,054,360	1,725	1978	\$14,086
15462 GULF BLVD # 1004	Madeira Beach	Condominium	\$1,053,935	1,725	1978	\$14,080
13398 GULF LN # 102	Madeira Beach	Condominium	\$1,050,302	2,010	2002	\$18,105
15462 GULF BLVD # 906	Madeira Beach	Condominium	\$1,043,461	1,725	1978	\$13,947
400 150TH AVE # 500	Madeira Beach	Condominium	\$1,027,466	1,880	2024	\$14,784
13910 GULF BLVD # 303	Madeira Beach	Condominium	\$1,022,856	1,705	1999	\$15,270
400 150TH AVE # 400	Madeira Beach	Condominium	\$1,021,923	1,880	2024	\$14,717
400 150TH AVE # 300	Madeira Beach	Condominium	\$1,017,073	1,880	2024	\$14,635
400 150TH AVE # 502	Madeira Beach	Condominium	\$993,052	1,852	2024	\$14,271

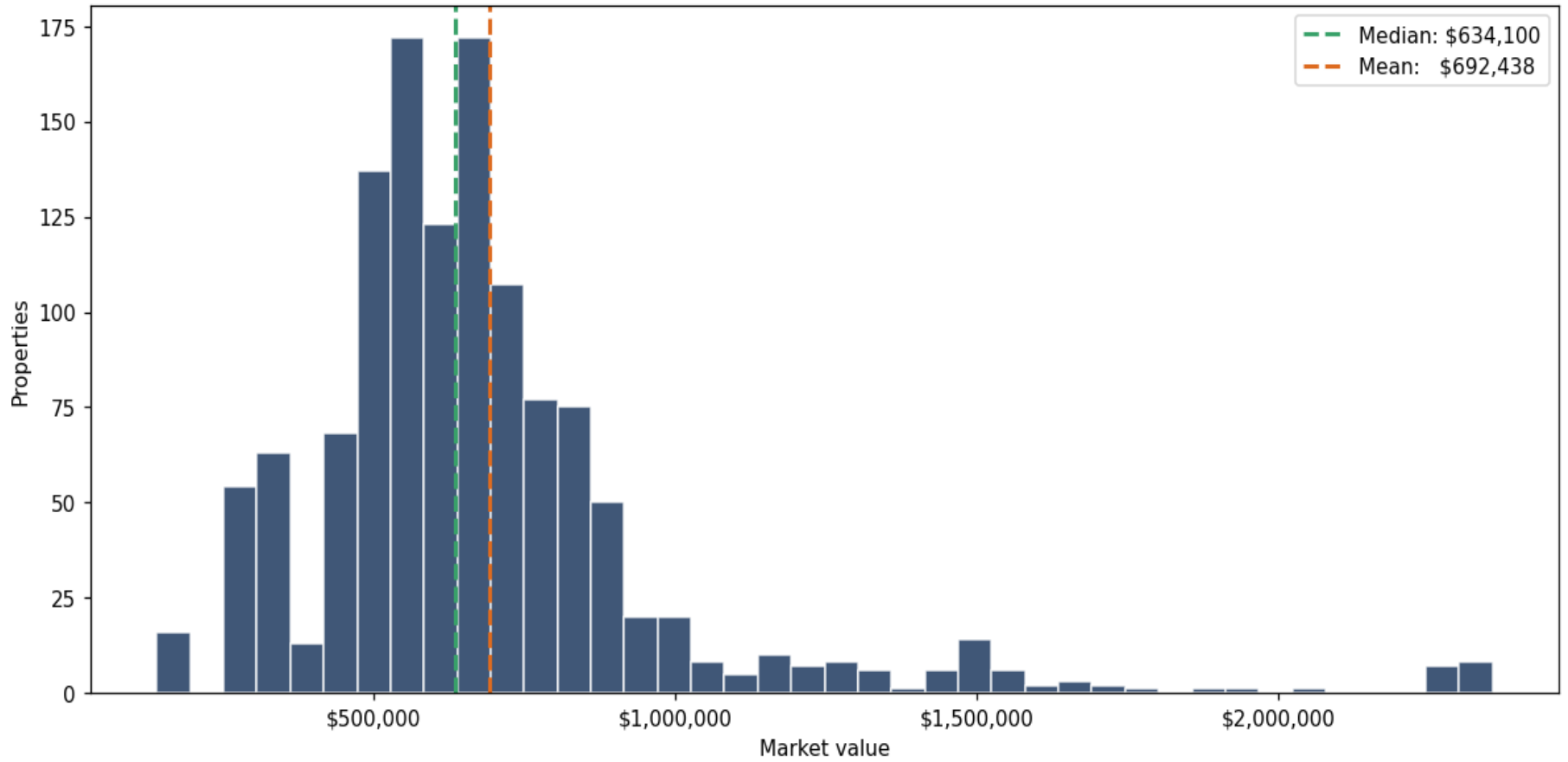
Address	City	Type	Market Value	Sq Ft	Year	Annual Tax
400 150TH AVE # 501	Madeira Beach	Condominium	\$993,052	1,852	2024	\$14,271
400 150TH AVE # 503	Madeira Beach	Condominium	\$993,052	1,852	2024	\$14,271
400 150TH AVE # 401	Madeira Beach	Condominium	\$986,910	1,852	2024	\$14,206
400 150TH AVE # 403	Madeira Beach	Condominium	\$986,910	1,852	2024	\$14,206
400 150TH AVE # 402	Madeira Beach	Condominium	\$986,910	1,852	2024	\$14,206
15462 GULF BLVD # 1002	Madeira Beach	Condominium	\$983,570	1,640	1978	\$13,022
400 150TH AVE # 301	Madeira Beach	Condominium	\$982,814	1,852	2024	\$14,133
400 150TH AVE # 302	Madeira Beach	Condominium	\$982,814	1,852	2024	\$14,133
400 150TH AVE # 303	Madeira Beach	Condominium	\$982,814	1,852	2024	\$14,133
15316 GULF BLVD # 504	Madeira Beach	Condominium	\$981,633	1,625	1978	\$12,490
400 150TH AVE # 506	Madeira Beach	Condominium	\$979,647	1,827	2024	\$14,079
400 150TH AVE # 504	Madeira Beach	Condominium	\$979,647	1,827	2024	\$14,079
13700 GULF BLVD # 300	Madeira Beach	Condominium	\$975,229	1,952	2017	\$16,053
15462 GULF BLVD # 902	Madeira Beach	Condominium	\$974,182	1,640	1978	\$12,889
400 150TH AVE # 404	Madeira Beach	Condominium	\$973,587	1,827	2024	\$14,014
400 150TH AVE # 406	Madeira Beach	Condominium	\$973,587	1,827	2024	\$14,014
400 150TH AVE # 206	Madeira Beach	Condominium	\$969,547	1,827	2024	\$13,942
400 150TH AVE # 306	Madeira Beach	Condominium	\$969,547	1,827	2024	\$13,942
400 150TH AVE # 304	Madeira Beach	Condominium	\$969,547	1,827	2024	\$13,942
15316 GULF BLVD # 801	Madeira Beach	Condominium	\$965,365	1,625	1978	\$14,543
13500 GULF BLVD # 701	Madeira Beach	Condominium	\$964,832	1,420	1982	\$14,161
13650 GULF BLVD # 604	Madeira Beach	Condominium	\$964,260	1,480	1980	\$12,244
400 150TH AVE # 507	Madeira Beach	Condominium	\$947,029	1,727	2024	\$13,580
300 150TH AVE # 501	Madeira Beach	Condominium	\$945,146	1,685	2022	\$12,625
13650 GULF BLVD # 204	Madeira Beach	Condominium	\$943,592	1,480	1980	\$11,840

Address	City	Type	Market Value	Sq Ft	Year	Annual Tax
400 150TH AVE # 407	Madeira Beach	Condominium	\$940,665	1,727	2024	\$13,519
13650 GULF BLVD # 401	Madeira Beach	Condominium	\$939,997	1,480	1980	\$11,789
300 150TH AVE # 401	Madeira Beach	Condominium	\$938,936	1,685	2022	\$12,572
400 150TH AVE # 307	Madeira Beach	Condominium	\$937,483	1,727	2024	\$13,444
400 150TH AVE # 207	Madeira Beach	Condominium	\$937,483	1,727	2024	\$13,444
300 150TH AVE # 201	Madeira Beach	Condominium	\$935,211	1,685	2022	\$12,505
300 150TH AVE # 301	Madeira Beach	Condominium	\$935,211	1,685	2022	\$12,505
15316 GULF BLVD # 901	Madeira Beach	Condominium	\$931,121	1,625	1978	\$13,999
13700 GULF BLVD # 200	Madeira Beach	Condominium	\$925,187	1,952	2018	\$16,169
14710 GULF BLVD # 401	Madeira Beach	Condominium	\$921,343	1,440	1981	\$13,330
400 150TH AVE # 505	Madeira Beach	Condominium	\$918,280	1,670	2024	\$13,183
13650 GULF BLVD # 402	Madeira Beach	Condominium	\$912,633	1,455	1980	\$11,491
15400 GULF BLVD # 1004	Madeira Beach	Condominium	\$909,642	1,675	1977	\$15,503
13650 GULF BLVD # 302	Madeira Beach	Condominium	\$909,100	1,455	1980	\$11,578
14710 GULF BLVD # 403	Madeira Beach	Condominium	\$896,181	1,440	1981	\$12,900
13650 GULF BLVD # 601	Madeira Beach	Condominium	\$895,064	1,480	1980	\$11,436
400 150TH AVE # 405	Madeira Beach	Condominium	\$894,848	1,670	2024	\$12,810
15316 GULF BLVD # 501	Madeira Beach	Condominium	\$892,488	1,625	1978	\$13,430
425 150TH AVE # 2501	Madeira Beach	Condominium	\$892,089	1,825	2003	\$11,941
425 150TH AVE # 2201	Madeira Beach	Condominium	\$892,052	1,825	2003	\$12,972
425 150TH AVE # 2506	Madeira Beach	Condominium	\$891,273	1,825	2003	\$11,926
400 150TH AVE # 205	Madeira Beach	Condominium	\$889,924	1,670	2024	\$12,744
400 150TH AVE # 305	Madeira Beach	Condominium	\$889,924	1,670	2024	\$12,744
425 150TH AVE # 2301	Madeira Beach	Condominium	\$888,370	1,825	2003	\$11,902
425 150TH AVE # 2401	Madeira Beach	Condominium	\$887,238	1,825	2003	\$10,704

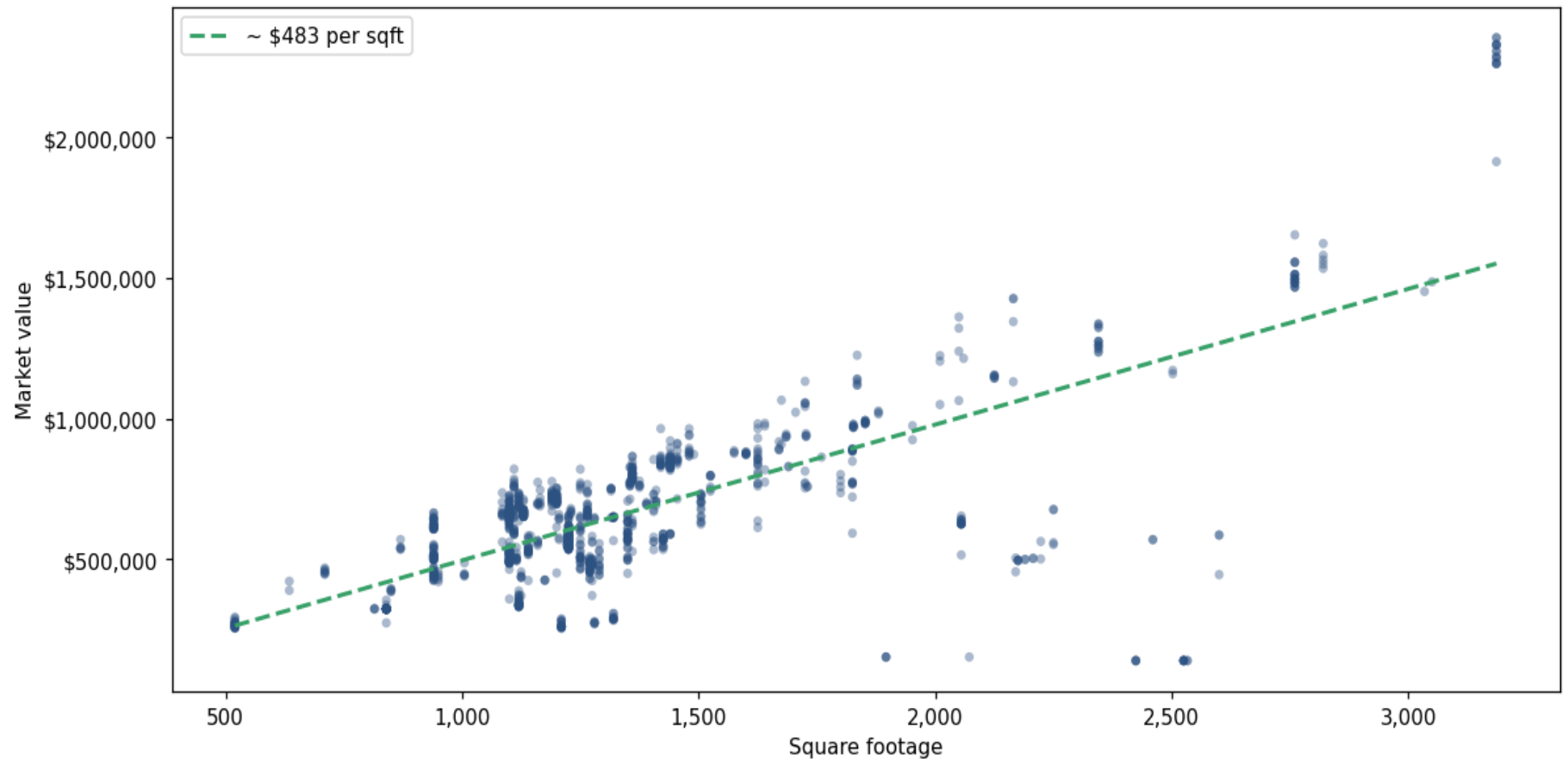
Address	City	Type	Market Value	Sq Ft	Year	Annual Tax
425 150TH AVE # 2406	Madeira Beach	Condominium	\$887,238	1,825	2003	\$11,862
425 150TH AVE # 2206	Madeira Beach	Condominium	\$886,578	1,825	2003	\$11,874
300 150TH AVE # 511	Madeira Beach	Condominium	\$886,377	1,575	2022	\$11,810
13650 GULF BLVD # 603	Madeira Beach	Condominium	\$886,129	1,455	1980	\$11,218
13650 GULF BLVD # 504	Madeira Beach	Condominium	\$885,179	1,480	1980	\$11,322
13650 GULF BLVD # 501	Madeira Beach	Condominium	\$885,179	1,480	1980	\$11,322
15316 GULF BLVD # 301	Madeira Beach	Condominium	\$883,505	1,625	1978	\$13,222
425 150TH AVE # 2306	Madeira Beach	Condominium	\$883,202	1,825	2003	\$11,819
300 150TH AVE # 509	Madeira Beach	Condominium	\$881,430	1,600	2022	\$11,762
300 150TH AVE # 503	Madeira Beach	Condominium	\$881,430	1,600	2022	\$11,762
300 150TH AVE # 411	Madeira Beach	Condominium	\$880,573	1,575	2022	\$11,761
13650 GULF BLVD # 404	Madeira Beach	Condominium	\$877,091	1,480	1980	\$11,158
13650 GULF BLVD # 201	Madeira Beach	Condominium	\$877,091	1,480	1980	\$11,107
300 150TH AVE # 311	Madeira Beach	Condominium	\$877,090	1,575	2022	\$11,699
300 150TH AVE # 403	Madeira Beach	Condominium	\$876,973	1,600	2022	\$11,725
300 150TH AVE # 409	Madeira Beach	Condominium	\$876,123	1,600	2022	\$11,712
15316 GULF BLVD # 1001	Madeira Beach	Condominium	\$875,818	1,625	1978	\$13,194
14710 GULF BLVD # 205	Madeira Beach	Condominium	\$875,197	1,440	1981	\$12,543
300 150TH AVE # 203	Madeira Beach	Condominium	\$874,285	1,600	2022	\$11,683
13910 GULF BLVD # 203	Madeira Beach	Condominium	\$873,065	1,490	1999	\$13,068
300 150TH AVE # 309	Madeira Beach	Condominium	\$872,585	1,600	2022	\$11,655
300 150TH AVE # 303	Madeira Beach	Condominium	\$872,585	1,600	2022	\$11,655
13500 GULF BLVD # 708	Madeira Beach	Condominium	\$868,262	1,420	1982	\$12,475
13650 GULF BLVD # 304	Madeira Beach	Condominium	\$868,104	1,480	1980	\$11,107
13650 GULF BLVD # 301	Madeira Beach	Condominium	\$868,104	1,480	1980	\$11,130

Address	City	Type	Market Value	Sq Ft	Year	Annual Tax
14710 GULF BLVD # 202	Madeira Beach	Condominium	\$866,453	1,440	1981	\$12,543
14146 GULF BLVD # 1-C	Madeira Beach	Condominium	\$866,258	1,360	1981	\$10,857
12901 GULF LN # 112	Madeira Beach	Condominium	\$865,177	1,360	1981	\$12,247
14710 GULF BLVD # 407	Madeira Beach	Condominium	\$865,139	1,440	1981	\$12,681
15316 GULF BLVD # 1004	Madeira Beach	Condominium	\$864,894	1,625	1978	\$13,014
14710 GULF BLVD # 501	Madeira Beach	Condominium	\$864,509	1,440	1981	\$12,666
14710 GULF BLVD # 507	Madeira Beach	Condominium	\$864,509	1,440	1981	\$12,666
13650 GULF BLVD # 602	Madeira Beach	Condominium	\$864,042	1,455	1980	\$10,994
300 150TH AVE # 502	Madeira Beach	Condominium	\$863,563	1,760	2022	\$10,800
13500 GULF BLVD # 608	Madeira Beach	Condominium	\$860,502	1,420	1982	\$12,366
13500 GULF BLVD # 601	Madeira Beach	Condominium	\$860,502	1,420	1982	\$12,401
15316 GULF BLVD # 904	Madeira Beach	Condominium	\$857,798	1,625	1978	\$12,903

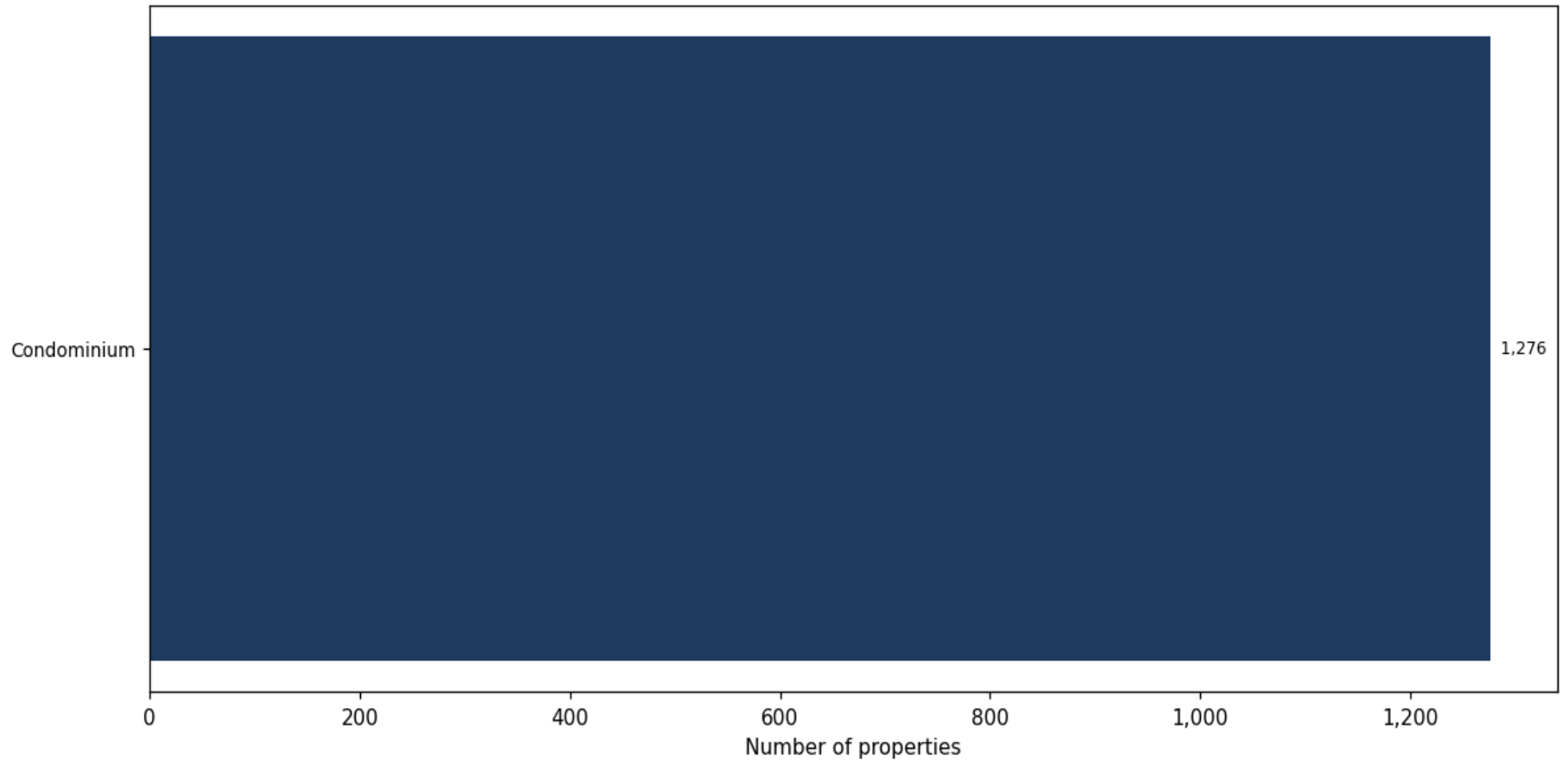
Market value distribution (n=1,276, top 1% trimmed for readability)



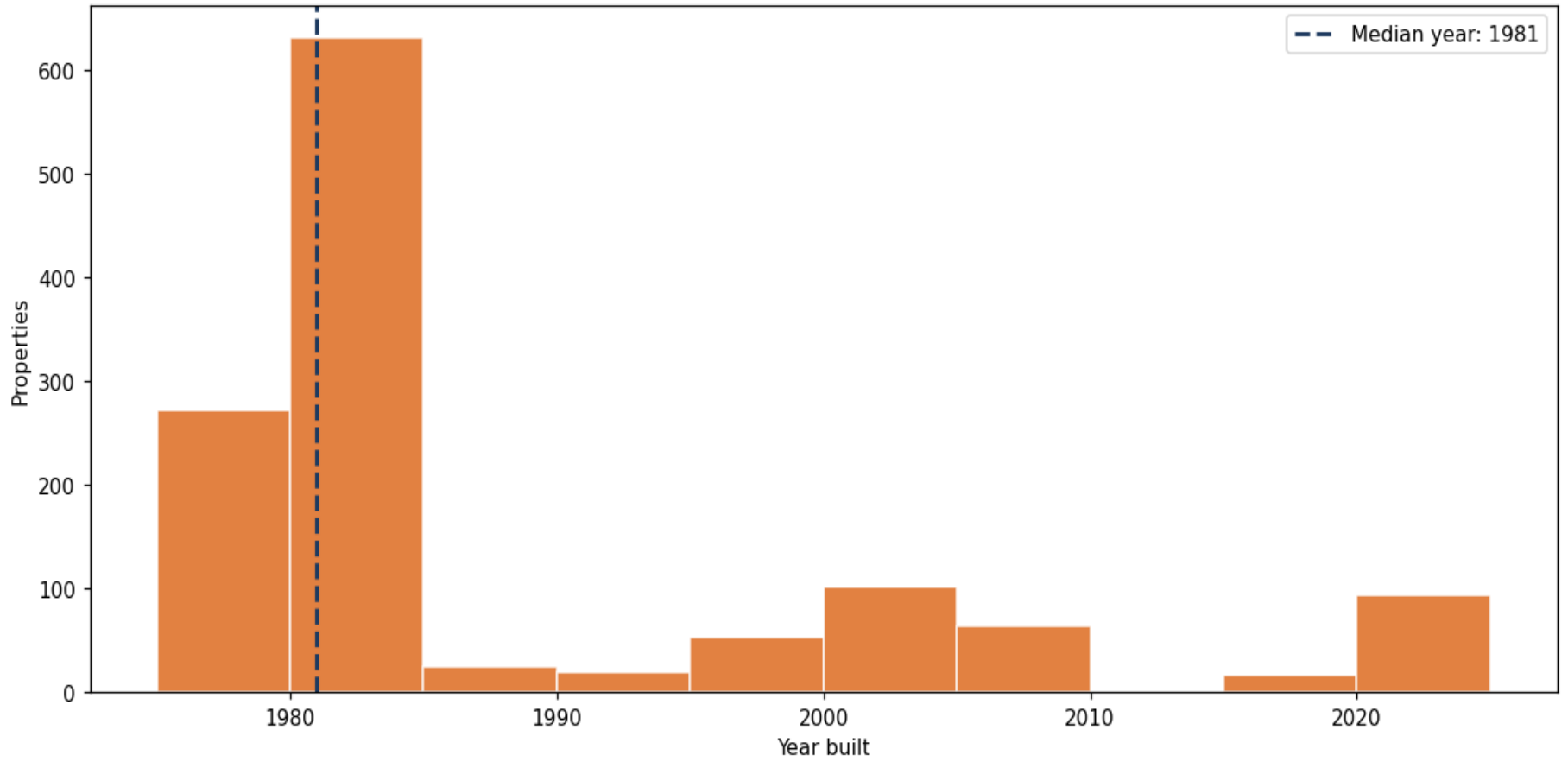
Building size vs. market value (n=1,257, outliers trimmed)



Top property types by count



Year built distribution (5-year buckets)



Market value vs. assessed value (gap = untaxed appreciation)

