

Pinellas Property Market Report

199 matching properties • May 30, 2026

Filters applied	Headline numbers
City: Largo	Properties matched: 199
Property type: General Warehouse	Median market value: \$790,000
	Mean market value: \$1,454,385
	Min / Max: \$140,000 / \$35,700,000
	Mean square footage: 17,714

Top 199 properties by market value

Address	City	Type	Market Value	Sq Ft	Year	Annual Tax
6385 150TH AVE	Largo	General Warehouse	\$35,700,000	342,870	2011	\$683,539
6303 126TH AVE	Largo	General Warehouse	\$10,950,000	166,022	2003	\$198,820
12333 ENTERPRISE BLVD	Largo	General Warehouse	\$8,300,000	103,494	1979	\$149,072
8452 118TH AVE	Largo	General Warehouse	\$7,200,000	79,823	2006	\$130,326
8585 SOMERSET DR	Largo	General Warehouse	\$5,350,000	66,530	2001	\$99,084
2180 S LAKE AVE SE	Largo	General Warehouse	\$5,200,000	93,112	1976	\$105,854
14550 62ND ST N	Largo	General Warehouse	\$5,125,000	102,020	1996	\$104,999
7975 114TH AVE	Largo	General Warehouse	\$5,030,588	43,044	2001	\$91,050
8235 114TH AVE N	Largo	General Warehouse	\$4,648,959	49,715	2008	\$83,552
8275 114TH AVE N	Largo	General Warehouse	\$4,348,383	49,771	2008	\$79,624
12722 62ND ST	Largo	General Warehouse	\$4,050,000	46,708	2007	\$75,993
12855 STARKEY RD	Largo	General Warehouse	\$4,000,000	51,520	2001	\$103,955
17129 US HIGHWAY 19 N	Largo	General Warehouse	\$3,655,000	31,018	1980	\$70,253

Address	City	Type	Market Value	Sq Ft	Year	Annual Tax
14375 MYERLAKE CIR	Largo	General Warehouse	\$3,595,000	35,304	1988	\$71,202
2062 20TH AVE SE	Largo	General Warehouse	\$3,400,000	40,732	1978	\$65,506
13555 49TH ST N	Largo	General Warehouse	\$3,275,000	52,416	1985	\$76,139
12555 ENTERPRISE BLVD	Largo	General Warehouse	\$2,850,000	45,492	1982	\$52,220
1501 LAKE AVE SE	Largo	General Warehouse	\$2,630,000	22,420	1984	\$51,265
1200 STARKEY RD	Largo	General Warehouse	\$2,540,000	29,712	2001	\$49,841
13630 50TH WAY N	Largo	General Warehouse	\$2,514,685	12,654	1985	\$63,797
13080 BELCHER RD S # H	Largo	General Warehouse	\$2,500,000	35,041	1985	\$49,652
9190 ULMERTON RD	Largo	General Warehouse	\$2,480,000	67,530	1968	\$92,658
9310 ULMERTON RD	Largo	General Warehouse	\$2,475,000	20,000	2023	\$48,133
14805 49TH ST N	Largo	General Warehouse	\$2,450,000	42,302	1963	\$51,740
7325 ULMERTON RD	Largo	General Warehouse	\$2,440,000	15,945	1971	\$47,468
9310 ULMERTON RD	Largo	General Warehouse	\$2,400,000	20,000	2017	\$46,993
1333 STARKEY RD # A	Largo	General Warehouse	\$2,400,000	29,925	1999	\$46,803
1200 STARKEY RD	Largo	General Warehouse	\$2,330,000	25,800	1974	\$45,569
9310 ULMERTON RD	Largo	General Warehouse	\$2,325,000	12,500	2018	\$45,190
7155 142ND AVE N	Largo	General Warehouse	\$2,275,000	30,046	2021	\$46,234
13770 AUTOMOBILE BLVD	Largo	General Warehouse	\$2,160,000	30,050	1998	\$44,145
9380 ULMERTON RD	Largo	General Warehouse	\$2,000,000	42,551	1969	\$42,721
4501 ULMERTON RD	Largo	General Warehouse	\$1,975,000	27,500	1973	\$39,398
13733 W RENA DR	Largo	General Warehouse	\$1,935,000	19,600	1965	\$36,583
14455 MYERLAKE CIR	Largo	General Warehouse	\$1,930,000	18,250	2021	\$37,974
12388 STARKEY RD	Largo	General Warehouse	\$1,925,000	35,512	1971	\$37,045
12775 STARKEY RD	Largo	General Warehouse	\$1,900,000	27,791	1974	\$35,611
6760 ULMERTON RD	Largo	General Warehouse	\$1,860,000	15,680	2002	\$36,076

Address	City	Type	Market Value	Sq Ft	Year	Annual Tax
1350 STARKEY RD	Largo	General Warehouse	\$1,830,000	10,350	1974	\$36,835
12461 CREEKSIDE DR	Largo	General Warehouse	\$1,775,000	20,958	2001	\$33,028
13155 STARKEY RD	Largo	General Warehouse	\$1,750,000	20,980	2005	\$34,177
8578 115TH AVE	Largo	General Warehouse	\$1,725,000	30,421	1994	\$32,582
8321 ULMERTON RD	Largo	General Warehouse	\$1,700,000	23,840	1969	\$31,988
12690 WALSINGHAM RD	Largo	General Warehouse	\$1,700,000	21,015	1979	\$32,133
13065 BELCHER RD S	Largo	General Warehouse	\$1,600,000	23,230	1982	\$31,614
6781 118TH AVE N	Largo	General Warehouse	\$1,600,000	13,244	1963	\$31,473
7855 126TH AVE # H	Largo	General Warehouse	\$1,600,000	22,500	1984	\$32,468
13150 BELCHER RD S # 1	Largo	General Warehouse	\$1,600,000	22,800	1966	\$32,658
8550 126TH AVE	Largo	General Warehouse	\$1,560,000	19,436	2004	\$29,636
12762 STARKEY RD	Largo	General Warehouse	\$1,540,000	20,129	1962	\$31,139
13136 95TH ST	Largo	General Warehouse	\$1,500,000	13,760	2004	\$27,040
6365 142ND AVE N	Largo	General Warehouse	\$1,450,000	6,848	2005	\$28,955
6870 142ND AVE	Largo	General Warehouse	\$1,415,000	39,850	1977	\$37,643
13500 US HIGHWAY 19 N	Largo	General Warehouse	\$1,395,000	19,124	1969	\$27,816
2088 S LAKE AVE	Largo	General Warehouse	\$1,365,000	24,000	1975	\$29,050
1765 CLEARWATER-LARGO RD	Largo	General Warehouse	\$1,345,000	13,864	1947	\$25,823
14115 63RD WAY N	Largo	General Warehouse	\$1,340,000	15,160	1989	\$27,531
8810 ENTERPRISE BLVD	Largo	General Warehouse	\$1,330,000	22,785	1980	\$39,901
2301 34TH WAY	Largo	General Warehouse	\$1,325,000	19,249	1982	\$25,802
1990 N BELCHER RD	Largo	General Warehouse	\$1,310,000	15,218	1989	\$26,107
1990 S LAKE AVE SE	Largo	General Warehouse	\$1,300,000	22,800	1970	\$27,626
12600 BELCHER RD S	Largo	General Warehouse	\$1,270,000	11,760	1970	\$25,348
13620 49TH ST N	Largo	General Warehouse	\$1,250,000	17,616	1989	\$28,006

Address	City	Type	Market Value	Sq Ft	Year	Annual Tax
14202 62ND ST N	Largo	General Warehouse	\$1,250,000	10,142	1998	\$24,683
6538 126TH AVE	Largo	General Warehouse	\$1,243,000	22,481	1968	\$26,724
12921 66TH ST	Largo	General Warehouse	\$1,240,000	16,400	2005	\$25,158
8770 133RD AVE	Largo	General Warehouse	\$1,225,000	12,366	1991	\$25,956
11455 66TH ST	Largo	General Warehouse	\$1,183,000	12,875	1967	\$23,465
611 COMMERCE DR	Largo	General Warehouse	\$1,120,000	21,880	1964	\$22,975
1890 STARKEY RD	Largo	General Warehouse	\$1,110,000	19,955	1978	\$21,826
6163 126TH AVE	Largo	General Warehouse	\$1,100,000	12,000	2004	\$20,324
6438 126TH AVE	Largo	General Warehouse	\$1,095,000	14,520	1973	\$22,999
6141 MEARS CT	Largo	General Warehouse	\$1,085,000	18,500	1983	\$22,405
1650 STARKEY RD	Largo	General Warehouse	\$1,075,000	13,080	1995	\$20,886
9111 130TH AVE	Largo	General Warehouse	\$1,060,000	9,345	1974	\$21,076
13663 AUTOMOBILE BLVD	Largo	General Warehouse	\$1,050,000	15,160	1993	\$21,550
13750 AUTOMOBILE BLVD	Largo	General Warehouse	\$1,050,000	13,000	1981	\$21,361
6513 116TH AVE	Largo	General Warehouse	\$1,046,000	14,060	1985	\$23,372
14333 MYERLAKE CIR	Largo	General Warehouse	\$1,040,000	10,011	1986	\$21,266
2322 S LAKE AVE SE	Largo	General Warehouse	\$1,025,000	9,030	1986	\$20,411
13737 AUTOMOBILE BLVD	Largo	General Warehouse	\$1,020,000	11,798	1992	\$20,886
13240 BELCHER RD S	Largo	General Warehouse	\$1,000,000	18,900	1960	\$18,557
13662 AUTOMOBILE BLVD	Largo	General Warehouse	\$995,000	10,505	1995	\$19,747
11683 87TH ST	Largo	General Warehouse	\$978,000	10,026	1987	\$18,567
6520 125TH AVE	Largo	General Warehouse	\$975,000	13,200	1971	\$19,554
14173 HONEYWELL RD	Largo	General Warehouse	\$965,000	9,240	2008	\$17,496
12545 CREEKSIDE DR	Largo	General Warehouse	\$960,000	11,060	2002	\$17,764
6510 125TH AVE	Largo	General Warehouse	\$890,000	12,000	1982	\$17,785

Address	City	Type	Market Value	Sq Ft	Year	Annual Tax
1880 STARKEY RD	Largo	General Warehouse	\$880,000	10,919	1972	\$15,906
12651 62ND ST	Largo	General Warehouse	\$875,000	10,500	1978	\$16,789
1490 DONEGAN RD	Largo	General Warehouse	\$860,000	9,000	1998	\$16,709
14000 68TH ST N	Largo	General Warehouse	\$860,000	10,696	1981	\$16,701
2320 10TH ST SE	Largo	General Warehouse	\$850,000	12,320	1969	\$15,906
13200 95TH ST	Largo	General Warehouse	\$850,000	9,600	2004	\$15,817
12401 66TH ST	Largo	General Warehouse	\$850,000	10,080	1981	\$17,133
2020 WILD ACRES RD	Largo	General Warehouse	\$815,000	9,600	1988	\$17,088
1373 BELCHER RD S #D	Largo	General Warehouse	\$810,000	6,000	1976	\$15,190
8767 115TH AVE	Largo	General Warehouse	\$800,000	9,191	1990	\$15,086
1806 S HIGHLAND AVE	Largo	General Warehouse	\$790,000	16,140	1976	\$16,614
2279 TALL PINES DR # A	Largo	General Warehouse	\$790,000	8,000	2004	\$15,759
13502 E RENA DR	Largo	General Warehouse	\$790,000	9,312	1999	\$15,729
11715 87TH ST	Largo	General Warehouse	\$780,000	9,010	2007	\$14,729
6121 MEARS CT	Largo	General Warehouse	\$780,000	13,170	1985	\$15,949
13707 AUTOMOBILE BLVD	Largo	General Warehouse	\$780,000	9,900	1999	\$16,804
7910 ULMERTON RD	Largo	General Warehouse	\$770,000	5,000	1972	\$14,905
1496 DONEGAN RD	Largo	General Warehouse	\$770,000	7,500	2006	\$14,905
6519 126TH AVE	Largo	General Warehouse	\$755,000	7,200	1979	\$15,000
2233 CHERYL RD	Largo	General Warehouse	\$750,000	9,360	1954	\$14,905
2070 LIONS CLUB RD	Largo	General Warehouse	\$750,000	6,000	2018	\$14,525
6570 126TH AVE	Largo	General Warehouse	\$750,000	8,950	1971	\$15,178
13250 95TH ST	Largo	General Warehouse	\$745,000	6,080	1988	\$13,255
13732 W RENA DR	Largo	General Warehouse	\$735,000	9,100	1972	\$15,110
8725 115TH AVE	Largo	General Warehouse	\$730,000	8,325	1986	\$13,657

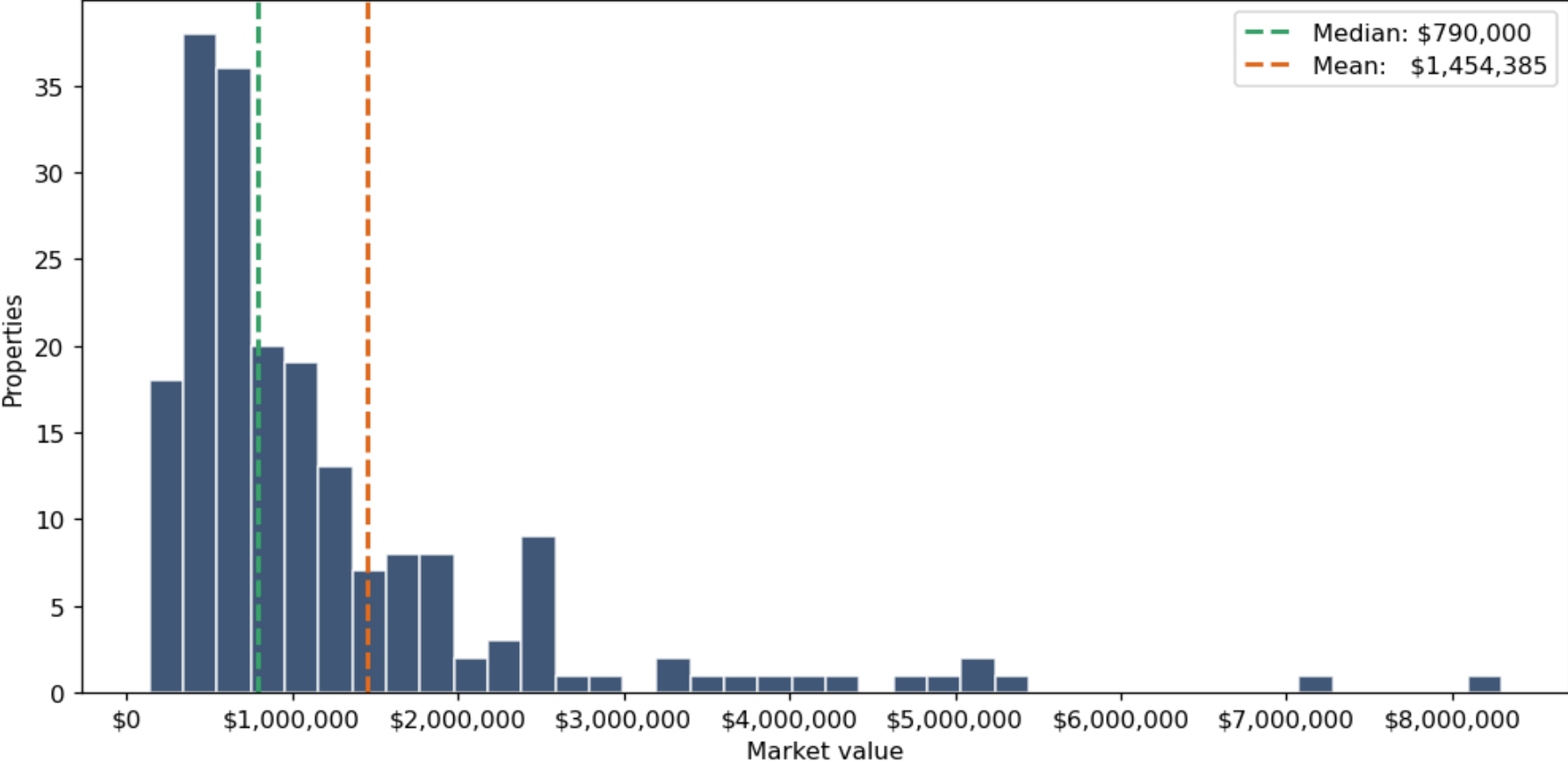
Address	City	Type	Market Value	Sq Ft	Year	Annual Tax
13100 BELCHER RD S	Largo	General Warehouse	\$730,000	9,900	1971	\$15,095
6414 126TH AVE	Largo	General Warehouse	\$725,000	9,840	1979	\$15,643
13094 95TH ST	Largo	General Warehouse	\$715,000	10,176	1976	\$13,873
8181 ULMERTON RD	Largo	General Warehouse	\$710,000	7,818	1950	\$14,704
1390 DONEGAN RD	Largo	General Warehouse	\$695,000	6,080	1975	\$13,255
14019 66TH ST	Largo	General Warehouse	\$690,000	5,400	1971	\$10,604
6218 147TH AVE N	Largo	General Warehouse	\$690,000	8,104	1998	\$14,335
2280 10TH ST SE	Largo	General Warehouse	\$680,000	10,080	1974	\$12,990
8585 115TH AVE	Largo	General Warehouse	\$675,000	7,731	1989	\$12,676
1417 EAST BAY DR	Largo	General Warehouse	\$665,000	9,856	1982	\$13,386
12503 CREEKSIDE DR	Largo	General Warehouse	\$660,000	6,156	2002	\$12,229
14835 49TH ST N	Largo	General Warehouse	\$650,000	10,224	1961	\$13,671
13622 66TH ST	Largo	General Warehouse	\$645,921	17,928	2025	\$39,873
9001 131ST PL	Largo	General Warehouse	\$640,000	7,000	1986	\$13,006
14038 63RD WAY N	Largo	General Warehouse	\$640,000	6,600	1989	\$13,101
13720 ROOSEVELT BLVD	Largo	General Warehouse	\$640,000	8,400	1980	\$13,481
2140 BELCHER RD S	Largo	General Warehouse	\$625,000	4,950	2006	\$12,152
1373 BELCHER RD S	Largo	General Warehouse	\$615,000	5,980	1973	\$14,240
531 COMMERCE DR	Largo	General Warehouse	\$610,000	10,400	1962	\$12,911
110 COMMERCE DR N	Largo	General Warehouse	\$610,000	9,728	1962	\$12,152
8997 131ST PL	Largo	General Warehouse	\$605,000	7,200	1982	\$12,152
14028 PALM WAY	Largo	General Warehouse	\$600,000	2,800	1969	\$11,046
2400 TALL PINES DR	Largo	General Warehouse	\$585,000	7,953	1993	\$11,867
1373 BELCHER RD S	Largo	General Warehouse	\$575,000	5,600	1975	\$10,975
1954 S LAKE AVE SE	Largo	General Warehouse	\$575,000	8,510	1993	\$12,247

Address	City	Type	Market Value	Sq Ft	Year	Annual Tax
2102 LIONS CLUB RD	Largo	General Warehouse	\$565,000	8,000	1973	\$11,677
2104 LIONS CLUB RD	Largo	General Warehouse	\$565,000	8,000	1974	\$11,677
9025 131ST PL	Largo	General Warehouse	\$560,000	6,073	1982	\$11,108
2075 S LAKE AVE SE	Largo	General Warehouse	\$560,000	6,300	2000	\$11,582
1275 STARKEY RD	Largo	General Warehouse	\$550,000	6,100	1973	\$10,918
1952 S LAKE AVE	Largo	General Warehouse	\$545,000	7,996	1973	\$11,677
324 13TH ST SW	Largo	General Warehouse	\$545,000	8,000	1978	\$10,975
13010 WALSINGHAM RD	Largo	General Warehouse	\$540,000	3,521	1954	\$10,138
200 COMMERCE DR N	Largo	General Warehouse	\$540,000	6,660	2010	\$10,633
2025 WILD ACRES RD	Largo	General Warehouse	\$540,000	6,250	1983	\$10,162
1731 CLEARWATER-LARGO RD	Largo	General Warehouse	\$535,000	6,905	1958	\$10,918
16603 US HIGHWAY 19 N	Largo	General Warehouse	\$525,000	3,300	1980	\$10,063
8800 126TH AVE	Largo	General Warehouse	\$520,000	6,000	1979	\$9,819
1125 STARKEY RD	Largo	General Warehouse	\$515,000	7,475	1972	\$10,728
2130 PINE FOREST DR	Largo	General Warehouse	\$510,000	4,060	1962	\$10,063
12685 STARKEY RD	Largo	General Warehouse	\$510,000	6,000	1980	\$9,367
2055 S LAKE AVE SE	Largo	General Warehouse	\$500,000	5,250	1995	\$9,778
1970 S LAKE AVE SE	Largo	General Warehouse	\$495,000	6,000	1999	\$9,968
14077 63RD WAY N	Largo	General Warehouse	\$485,000	4,960	1989	\$9,873
14152 63RD WAY N	Largo	General Warehouse	\$480,000	4,920	1990	\$9,778
324 13TH ST SW	Largo	General Warehouse	\$480,000	8,000	1967	\$9,683
13688 W RENA DR	Largo	General Warehouse	\$470,000	4,925	2002	\$9,778
14076 63RD WAY N	Largo	General Warehouse	\$470,000	4,836	1990	\$9,589
13800 US HIGHWAY 19 N	Largo	General Warehouse	\$465,000	3,990	1984	\$9,019
6555 116TH AVE # B	Largo	General Warehouse	\$455,000	4,950	1984	\$9,789

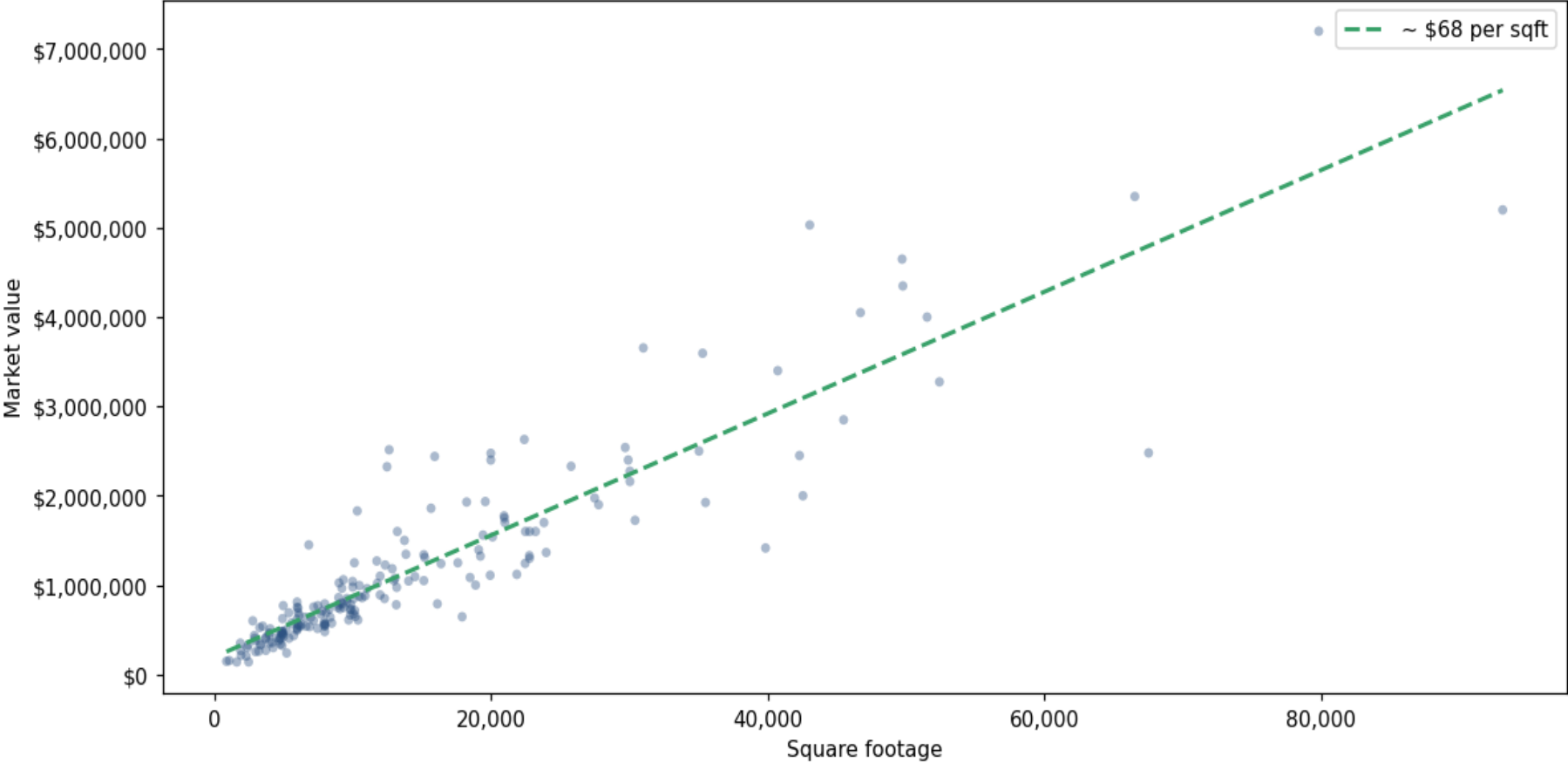
Address	City	Type	Market Value	Sq Ft	Year	Annual Tax
6537 126TH AVE	Largo	General Warehouse	\$450,000	5,000	1972	\$8,483
13007 BELCHER RD S	Largo	General Warehouse	\$450,000	3,960	1995	\$9,494
6537 116TH AVE	Largo	General Warehouse	\$447,000	4,862	1985	\$9,628
6442 123RD AVE	Largo	General Warehouse	\$435,000	5,760	1972	\$9,777
9425 ULMERTON RD	Largo	General Warehouse	\$435,000	2,912	1952	\$8,354
6520 126TH AVE	Largo	General Warehouse	\$425,000	5,044	1958	\$8,567
1509 CLEARWATER-LARGO RD N	Largo	General Warehouse	\$415,000	3,750	1983	\$8,070
14050 68TH ST N	Largo	General Warehouse	\$410,000	4,500	1979	\$7,688
13326 95TH ST	Largo	General Warehouse	\$405,000	4,757	1989	\$7,599
6462 125TH AVE	Largo	General Warehouse	\$405,000	5,420	1983	\$8,287
13090 STARKEY RD	Largo	General Warehouse	\$405,000	2,940	1986	\$8,070
13764 W RENA DR	Largo	General Warehouse	\$400,000	4,800	1955	\$8,483
13150 STARKEY RD	Largo	General Warehouse	\$400,000	3,720	2006	\$7,880
5767 157TH AVE N	Largo	General Warehouse	\$375,000	4,672	1983	\$7,595
1373 BELCHER RD S	Largo	General Warehouse	\$375,000	3,000	1977	\$7,500
1761 CARNEGIE AVE	Largo	General Warehouse	\$355,000	4,000	1986	\$9,494
689 4TH ST NW	Largo	General Warehouse	\$355,000	4,200	1977	\$7,120
8033 ULMERTON RD	Largo	General Warehouse	\$350,000	1,900	2007	\$7,120
14024 HONEYWELL RD	Largo	General Warehouse	\$340,000	4,800	1974	\$6,892
13632 W RENA DR	Largo	General Warehouse	\$340,000	3,360	2005	\$6,930
233 12TH ST SW	Largo	General Warehouse	\$330,000	2,464	1958	\$6,551
8949 131ST PL	Largo	General Warehouse	\$330,000	3,366	1982	\$6,456
11950 67TH WAY	Largo	General Warehouse	\$325,000	4,920	1963	\$6,425
8950 131ST AVE	Largo	General Warehouse	\$300,000	2,400	2002	\$6,076
118 14TH ST NW	Largo	General Warehouse	\$300,000	4,275	1974	\$5,886

Address	City	Type	Market Value	Sq Ft	Year	Annual Tax
11621 HAMLIN BLVD	Largo	General Warehouse	\$270,000	1,920	1963	\$4,718
6300 150TH AVE N	Largo	General Warehouse	\$270,000	3,748	1963	\$5,601
201 COMMERCE DR N # A	Largo	General Warehouse	\$260,000	3,231	1993	\$5,316
1406 CLEARWATER-LARGO RD N	Largo	General Warehouse	\$255,000	3,000	1962	\$5,221
2080 WILD ACRES RD	Largo	General Warehouse	\$240,000	5,250	1971	\$4,937
2255 SOUTH WIND LN	Largo	General Warehouse	\$215,000	1,960	1991	\$4,367
1400 CLEARWATER-LARGO RD N	Largo	General Warehouse	\$205,000	2,331	1942	\$4,177
11623 HAMLIN BLVD	Largo	General Warehouse	\$155,000	1,100	1963	\$2,716
1921 STARKEY RD	Largo	General Warehouse	\$147,000	900	1956	\$2,886
815 BEVERLY AVE	Largo	General Warehouse	\$140,000	1,644	1951	\$2,943
6701 N RENA DR	Largo	General Warehouse	\$140,000	2,500	1990	\$2,828

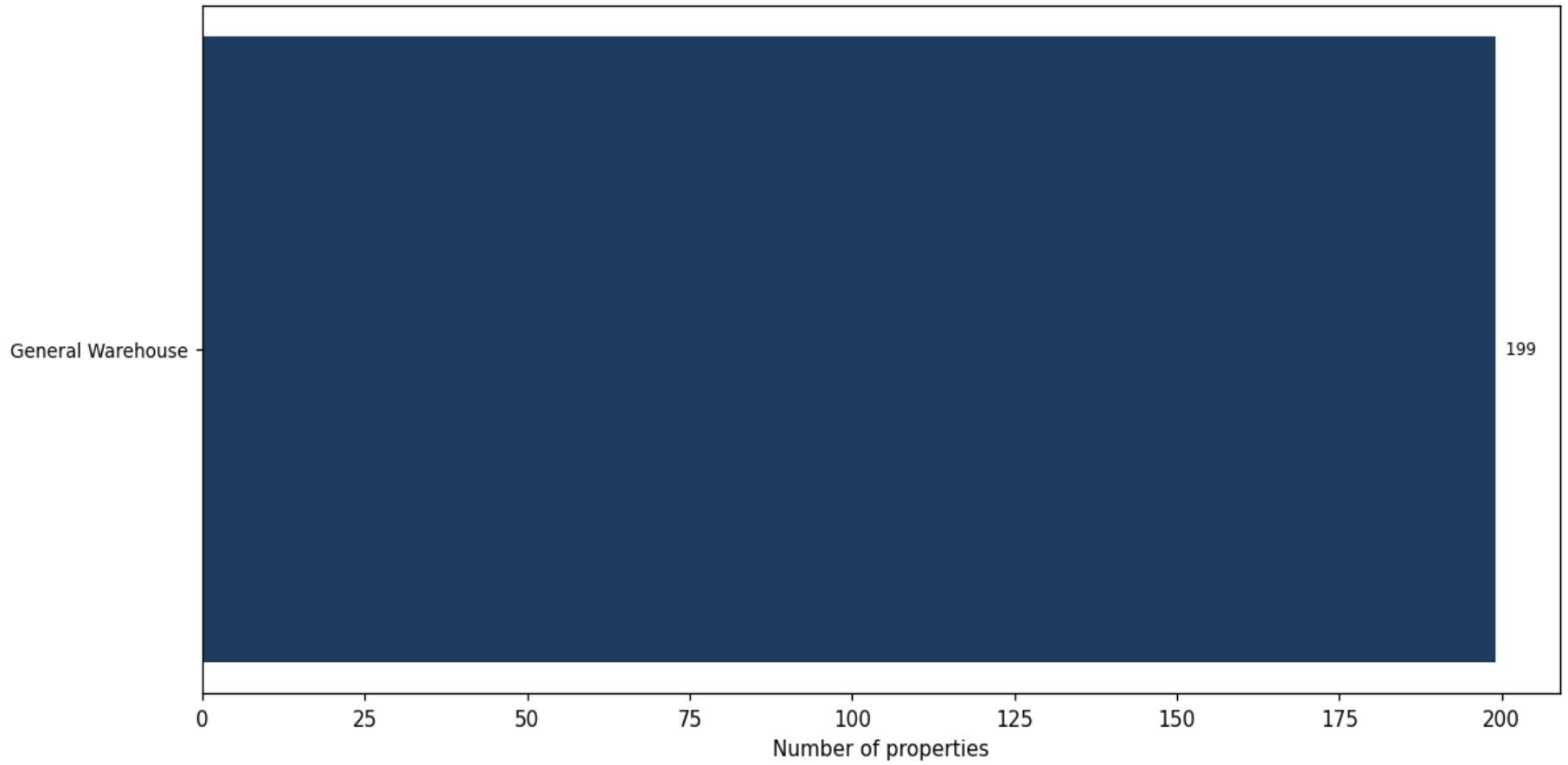
Market value distribution (n=199, top 1% trimmed for readability)



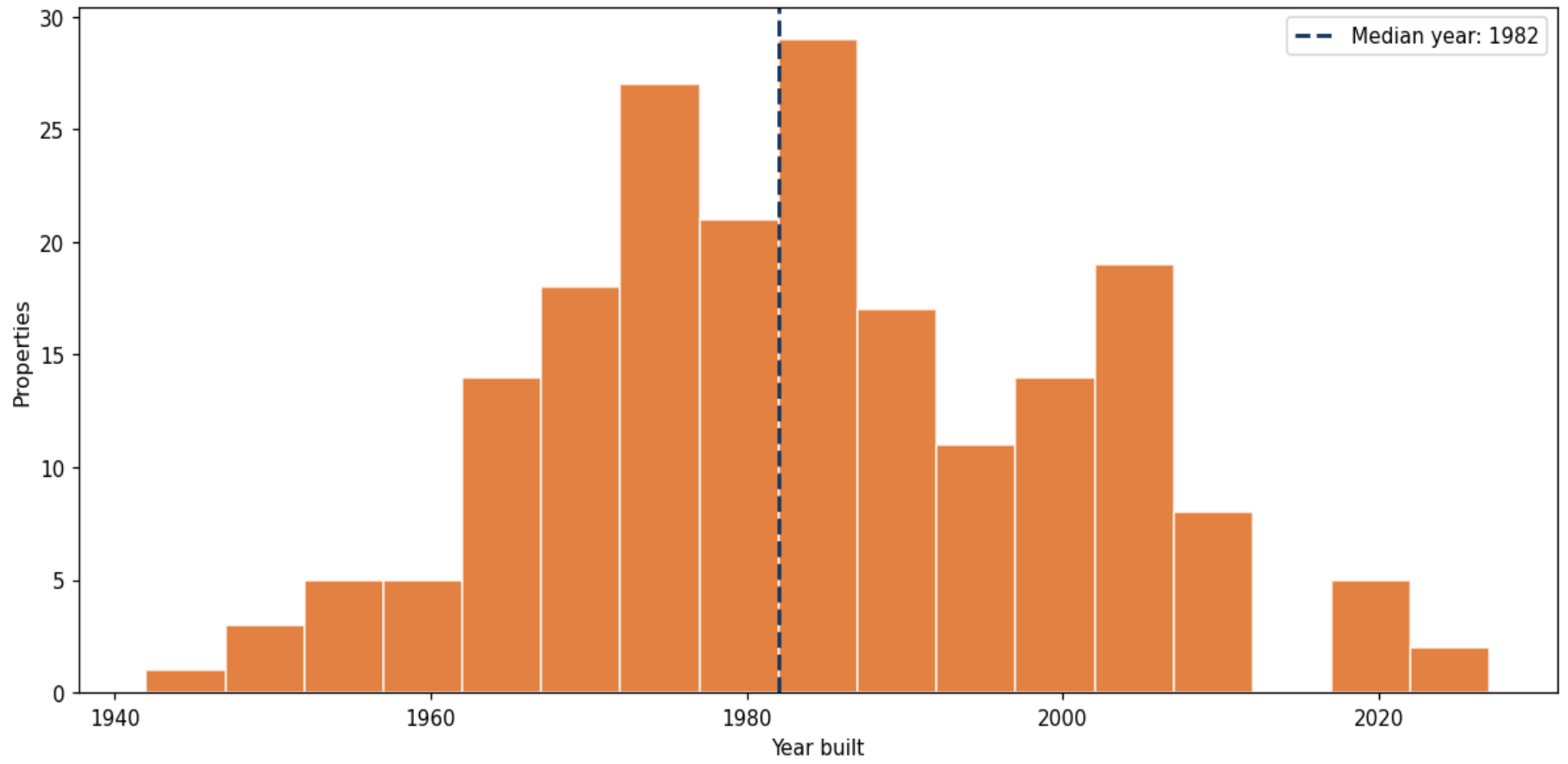
Building size vs. market value (n=195, outliers trimmed)



Top property types by count



Year built distribution (5-year buckets)



Market value vs. assessed value (gap = untaxed appreciation)

