

Pinellas Property Market Report

62 matching properties • May 30, 2026

Filters applied	Headline numbers
City: Dunedin	Properties matched: 62
Property type: Strip Store - (2 or more stores)	Median market value: \$800,000
	Mean market value: \$1,087,984
	Min / Max: \$210,000 / \$5,070,000
	Mean square footage: 7,948

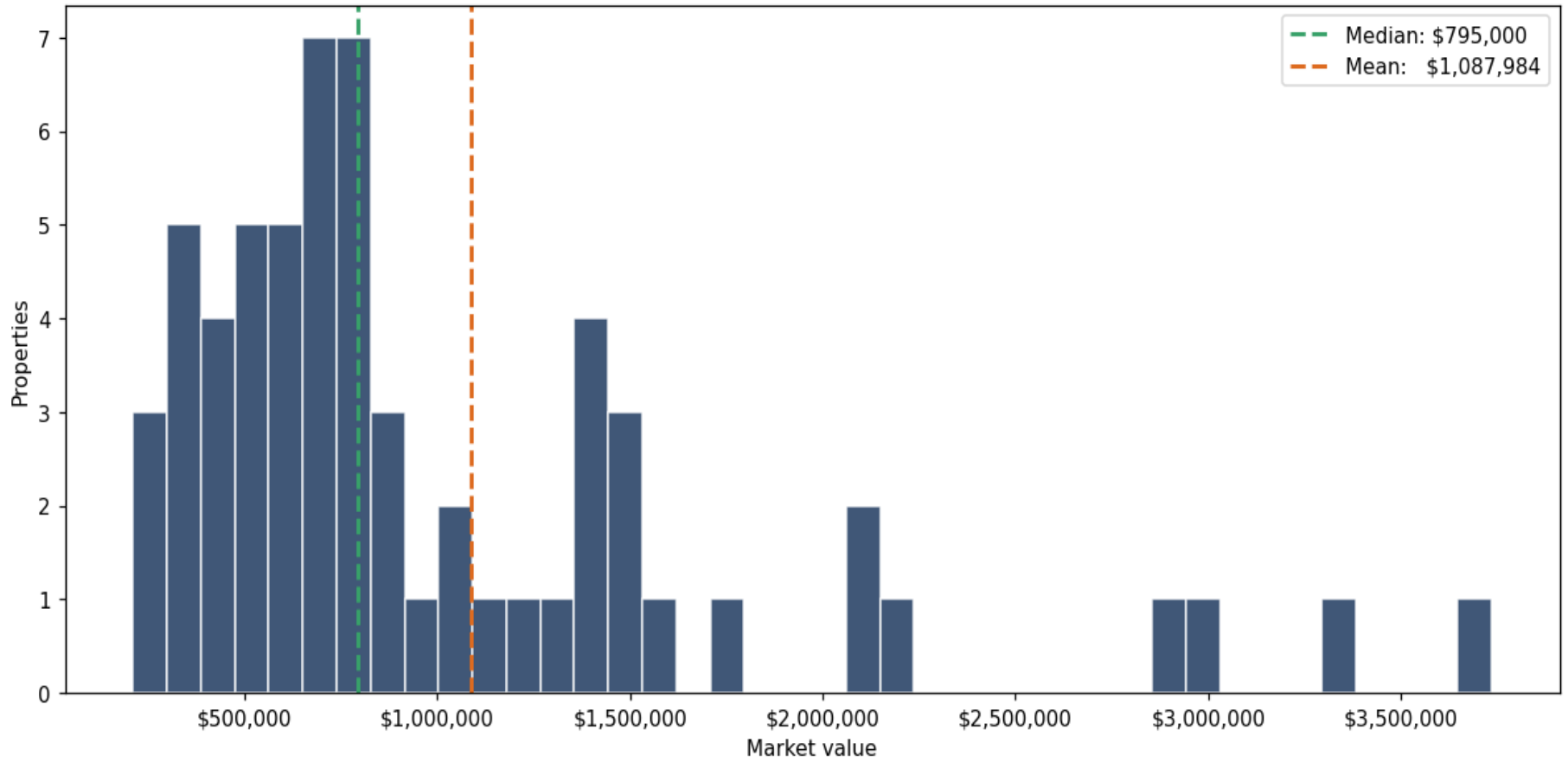
Top 62 properties by market value

Address	City	Type	Market Value	Sq Ft	Year	Annual Tax
2104 MAIN ST	Dunedin	Strip Store - (2 or more)	\$5,070,000	38,059	1979	\$92,849
28200 US HIGHWAY 19 N	Dunedin	Strip Store - (2 or more)	\$3,735,000	35,757	1982	\$65,742
245 MAIN ST	Dunedin	Strip Store - (2 or more)	\$3,375,000	22,546	1956	\$59,846
1785 MAIN ST	Dunedin	Strip Store - (2 or more)	\$3,025,000	7,260	2016	\$53,245
340 MAIN ST	Dunedin	Strip Store - (2 or more)	\$2,905,000	11,348	1965	\$55,093
1351 MAIN ST	Dunedin	Strip Store - (2 or more)	\$2,220,000	18,633	1979	\$44,004
2194 MAIN ST	Dunedin	Strip Store - (2 or more)	\$2,070,000	13,450	1983	\$36,436
1471 MAIN ST	Dunedin	Strip Store - (2 or more)	\$2,065,000	9,776	1998	\$36,348
715 BROADWAY	Dunedin	Strip Store - (2 or more)	\$1,750,000	6,604	2000	\$30,979
1425 MAIN ST	Dunedin	Strip Store - (2 or more)	\$1,580,000	13,273	1985	\$29,923
1275 BAYSHORE BLVD	Dunedin	Strip Store - (2 or more)	\$1,530,000	12,320	1973	\$28,163
256 SCOTLAND ST	Dunedin	Strip Store - (2 or more)	\$1,480,000	7,257	1900	\$27,723
1812 MAIN ST	Dunedin	Strip Store - (2 or more)	\$1,475,000	18,000	1993	\$25,963

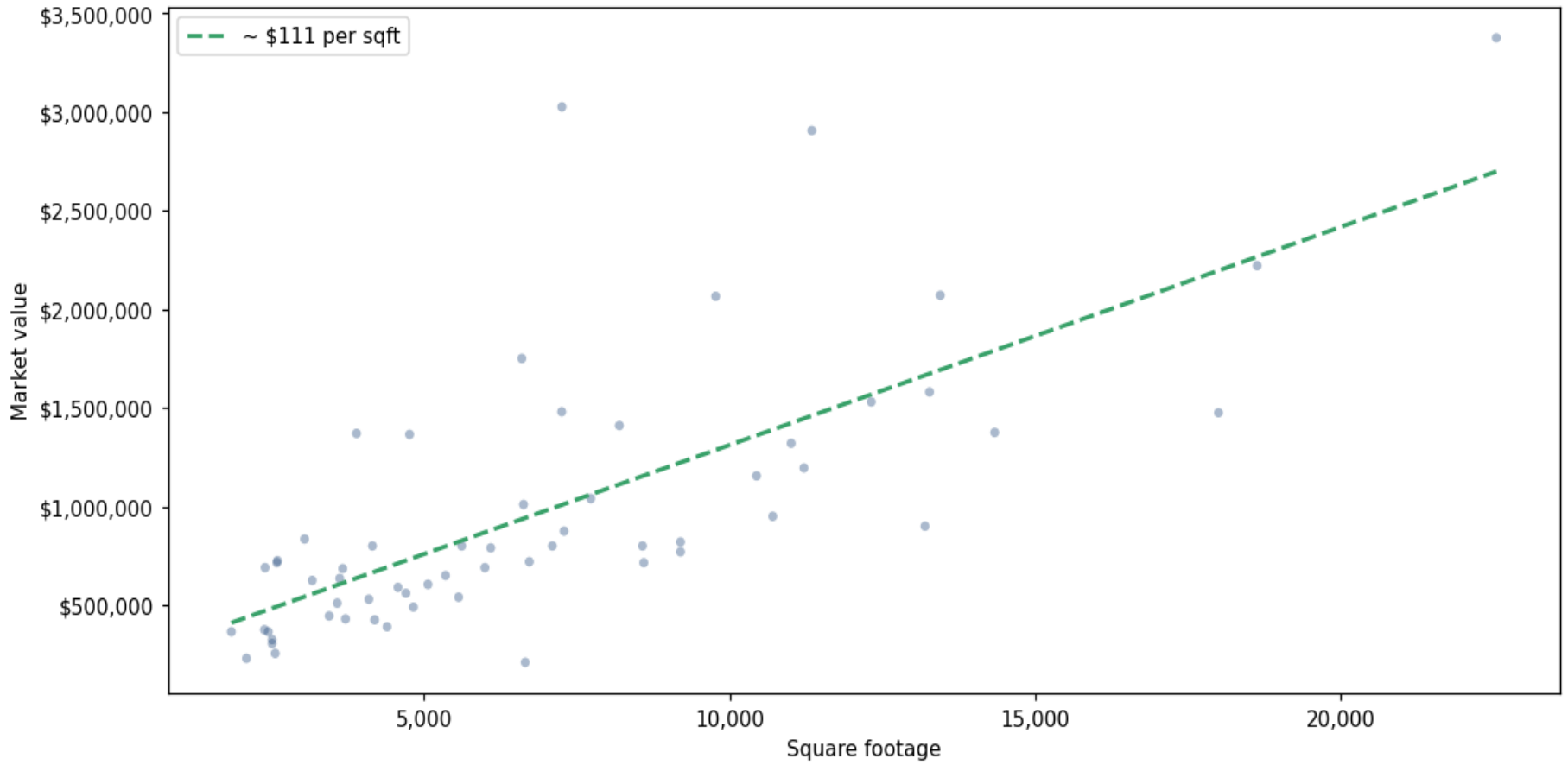
Address	City	Type	Market Value	Sq Ft	Year	Annual Tax
1761 MAIN ST	Dunedin	Strip Store - (2 or more)	\$1,410,000	8,200	1989	\$24,818
1714 COUNTY ROAD 1	Dunedin	Strip Store - (2 or more)	\$1,375,000	14,340	1973	\$25,346
1440 MAIN ST	Dunedin	Strip Store - (2 or more)	\$1,370,000	3,900	2022	\$24,114
310 MAIN ST	Dunedin	Strip Store - (2 or more)	\$1,365,000	4,768	1941	\$24,818
2109 MAIN ST	Dunedin	Strip Store - (2 or more)	\$1,320,000	11,010	1977	\$25,391
1568 MAIN ST	Dunedin	Strip Store - (2 or more)	\$1,195,000	11,220	1976	\$21,782
1334 MAIN ST	Dunedin	Strip Store - (2 or more)	\$1,155,000	10,444	1978	\$21,914
1780 MAIN ST	Dunedin	Strip Store - (2 or more)	\$1,040,000	7,732	1980	\$18,922
953 BROADWAY	Dunedin	Strip Store - (2 or more)	\$1,010,000	6,632	1952	\$18,746
839 COUNTY ROAD 1	Dunedin	Strip Store - (2 or more)	\$950,000	10,708	1986	\$17,162
1836 MAIN ST	Dunedin	Strip Store - (2 or more)	\$900,000	13,200	1996	\$16,018
1153 MAIN ST	Dunedin	Strip Store - (2 or more)	\$875,000	7,296	1986	\$17,162
290 CAUSEWAY BLVD	Dunedin	Strip Store - (2 or more)	\$835,000	3,050	1965	\$15,225
414 PATRICIA AVE	Dunedin	Strip Store - (2 or more)	\$820,000	9,200	1961	\$15,842
501 MAIN ST	Dunedin	Strip Store - (2 or more)	\$800,000	4,160	1994	\$14,521
376 PATRICIA AVE	Dunedin	Strip Store - (2 or more)	\$800,000	7,104	1967	\$14,961
1293 BAYSHORE BLVD	Dunedin	Strip Store - (2 or more)	\$800,000	8,578	1960	\$15,137
947 HUNTLEY AVE	Dunedin	Strip Store - (2 or more)	\$800,000	5,621	1956	\$15,842
1280 MAIN ST	Dunedin	Strip Store - (2 or more)	\$790,000	6,096	1958	\$14,697
1271 SAN CHRISTOPHER DR	Dunedin	Strip Store - (2 or more)	\$770,000	9,200	1984	\$14,257
500 MAIN ST	Dunedin	Strip Store - (2 or more)	\$725,000	2,606	1957	\$12,761
104 PATRICIA AVE	Dunedin	Strip Store - (2 or more)	\$720,000	6,727	1985	\$14,169
1422 PINEHURST RD	Dunedin	Strip Store - (2 or more)	\$715,000	8,600	1974	\$13,905
357 SCOTLAND ST	Dunedin	Strip Store - (2 or more)	\$715,000	2,597	1920	\$13,553
320 MAIN ST	Dunedin	Strip Store - (2 or more)	\$690,000	2,404	1996	\$12,497

Address	City	Type	Market Value	Sq Ft	Year	Annual Tax
300 CAUSEWAY BLVD	Dunedin	Strip Store - (2 or more)	\$690,000	6,000	1966	\$12,585
660 MAIN ST	Dunedin	Strip Store - (2 or more)	\$685,000	3,674	1957	\$12,057
1108 OVERCASH DR	Dunedin	Strip Store - (2 or more)	\$650,000	5,356	1978	\$11,881
355 MAIN ST	Dunedin	Strip Store - (2 or more)	\$635,000	3,625	1909	\$12,321
461 GRANT ST	Dunedin	Strip Store - (2 or more)	\$625,000	3,175	1973	\$11,001
1140 MAIN ST	Dunedin	Strip Store - (2 or more)	\$605,000	5,068	1965	\$11,177
1006 BROADWAY	Dunedin	Strip Store - (2 or more)	\$590,000	4,577	1966	\$11,881
1411 MAIN ST	Dunedin	Strip Store - (2 or more)	\$560,000	4,708	1979	\$10,473
1041 MAIN ST	Dunedin	Strip Store - (2 or more)	\$540,000	5,570	1966	\$10,121
1600 ACHIEVA WAY	Dunedin	Strip Store - (2 or more)	\$530,000	4,102	1987	\$9,857
920 BROADWAY	Dunedin	Strip Store - (2 or more)	\$510,000	3,584	1960	\$9,857
1110 OVERCASH DR	Dunedin	Strip Store - (2 or more)	\$490,000	4,830	1977	\$9,065
1602 ACHIEVA WAY	Dunedin	Strip Store - (2 or more)	\$445,000	3,452	2004	\$8,273
771 MAIN ST	Dunedin	Strip Store - (2 or more)	\$430,000	3,720	1971	\$7,921
917 BROADWAY	Dunedin	Strip Store - (2 or more)	\$425,000	4,197	1960	\$8,273
785 SAN CHRISTOPHER DR	Dunedin	Strip Store - (2 or more)	\$390,000	4,400	1977	\$7,393
437 MAIN ST	Dunedin	Strip Store - (2 or more)	\$375,000	2,394	1924	\$7,393
553 MAIN ST	Dunedin	Strip Store - (2 or more)	\$365,000	2,456	1949	\$6,865
351 MAIN ST	Dunedin	Strip Store - (2 or more)	\$365,000	1,853	1917	\$6,777
1101 MAIN ST	Dunedin	Strip Store - (2 or more)	\$325,000	2,520	1961	\$5,985
1123 MAIN ST	Dunedin	Strip Store - (2 or more)	\$305,000	2,520	1958	\$5,985
2436 BAYSHORE BLVD	Dunedin	Strip Store - (2 or more)	\$255,000	2,570	1955	\$4,664
1414 PINEHURST RD	Dunedin	Strip Store - (2 or more)	\$230,000	2,100	1968	\$4,224
716 MAIN ST	Dunedin	Strip Store - (2 or more)	\$210,000	6,660	1939	\$19,749

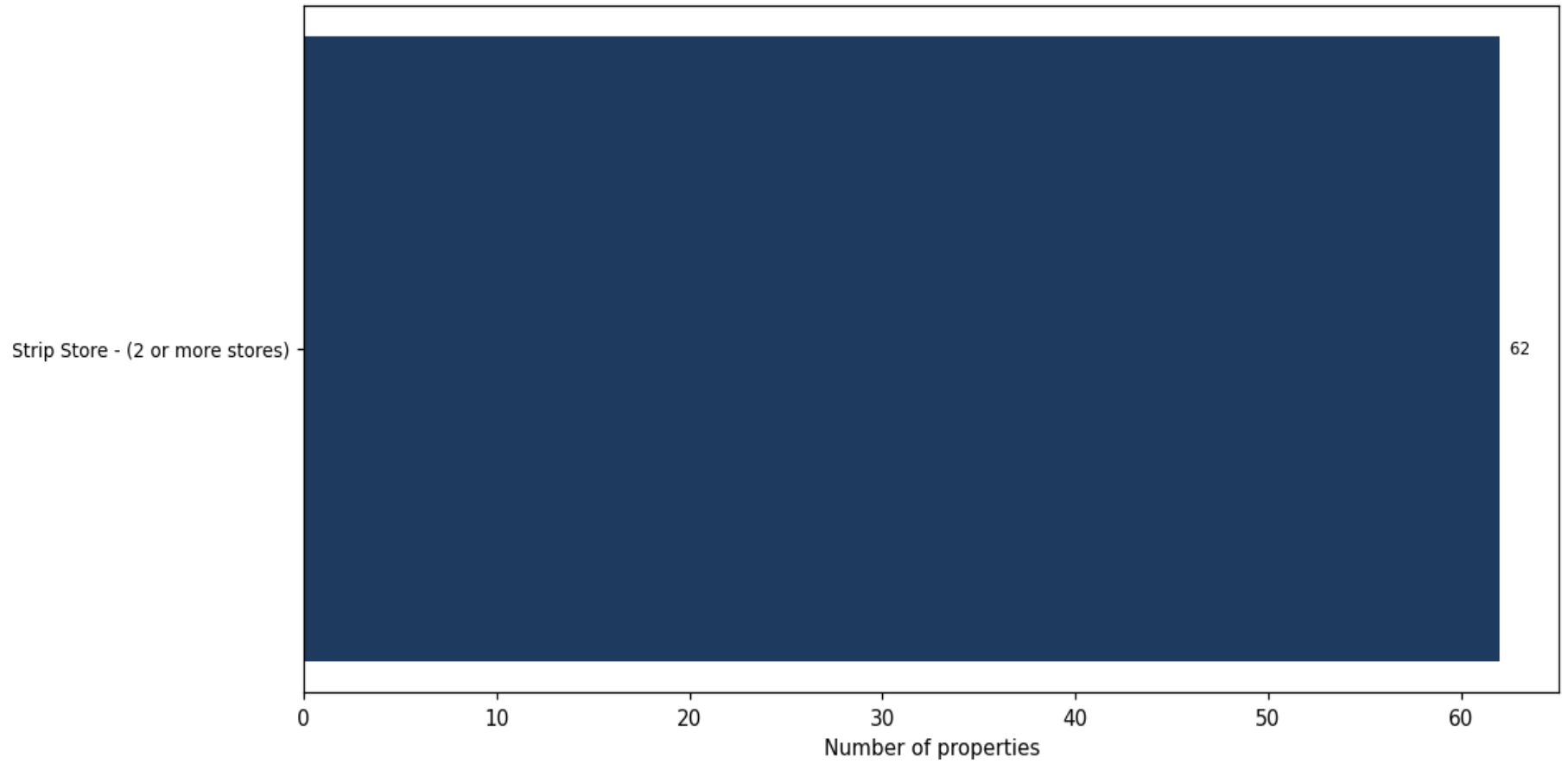
Market value distribution (n=62, top 1% trimmed for readability)



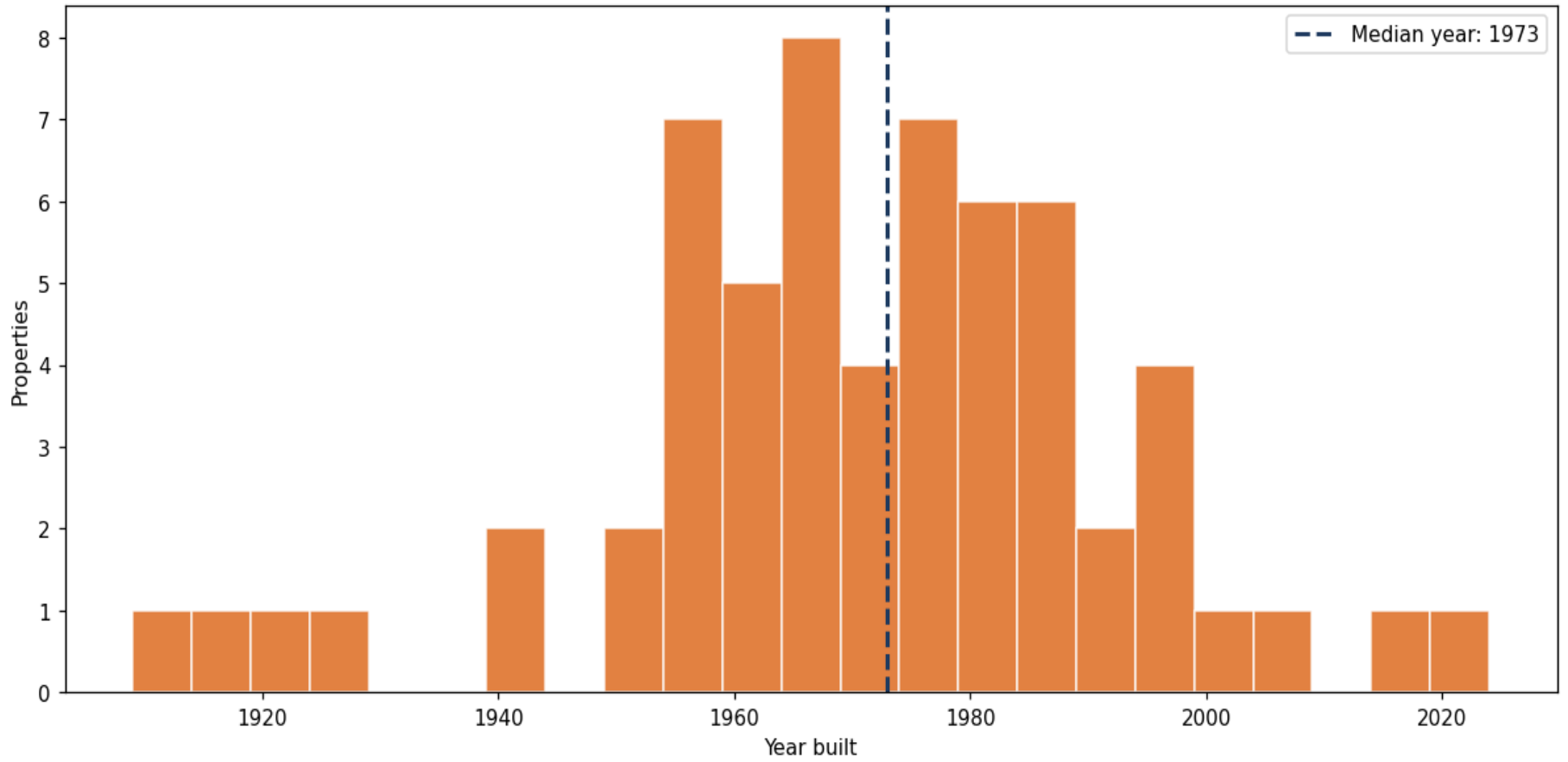
Building size vs. market value (n=60, outliers trimmed)



Top property types by count



Year built distribution (5-year buckets)



Market value vs. assessed value (gap = untaxed appreciation)

