

Pinellas Property Market Report

170 matching properties • May 30, 2026

Filters applied	Headline numbers
City: Clearwater	Properties matched: 170
Property type: Single Building Store	Median market value: \$635,000
	Mean market value: \$998,436
	Min / Max: \$50,500 / \$7,840,000
	Mean square footage: 6,608

Top 170 properties by market value

Address	City	Type	Market Value	Sq Ft	Year	Annual Tax
401 POINSETTIA AVE	Clearwater	Single Building Store	\$7,840,000	23,000	2013	\$155,011
703 COURT ST	Clearwater	Single Building Store	\$4,460,000	16,605	2016	\$90,637
16494 US HIGHWAY 19 N	Clearwater	Single Building Store	\$4,025,000	20,292	2016	\$76,613
400 POINSETTIA AVE	Clearwater	Single Building Store	\$3,950,000	10,194	1989	\$77,699
467 MANDALAY AVE	Clearwater	Single Building Store	\$3,925,000	9,940	1975	\$77,409
923 N MCMULLEN BOOTH RD	Clearwater	Single Building Store	\$3,750,000	106,192	1957	\$77,409
1801 GULF TO BAY BLVD	Clearwater	Single Building Store	\$3,585,000	15,598	1996	\$69,378
1604 S MISSOURI AVE	Clearwater	Single Building Store	\$3,415,000	15,525	1996	\$66,959
1880 N BELCHER RD	Clearwater	Single Building Store	\$3,365,000	15,294	1995	\$65,797
814 CLEVELAND ST	Clearwater	Single Building Store	\$3,350,000	14,891	2000	\$68,079
450 MANDALAY AVE	Clearwater	Single Building Store	\$3,250,000	12,548	2003	\$65,507
1505 S BELCHER RD	Clearwater	Single Building Store	\$3,130,000	14,272	2002	\$61,153
1765 GULF TO BAY BLVD	Clearwater	Single Building Store	\$3,080,000	14,960	2007	\$59,605

Address	City	Type	Market Value	Sq Ft	Year	Annual Tax
1605 S MISSOURI AVE	Clearwater	Single Building Store	\$2,890,000	14,764	2000	\$51,075
30387 US HIGHWAY 19 N	Clearwater	Single Building Store	\$2,875,000	14,968	1998	\$50,091
1899 N HIGHLAND AVE	Clearwater	Single Building Store	\$2,775,000	15,360	2008	\$54,573
2300 STATE ROAD 580	Clearwater	Single Building Store	\$2,750,000	17,700	2023	\$59,690
1 S MISSOURI AVE	Clearwater	Single Building Store	\$2,465,000	12,096	1999	\$50,704
2945 GULF TO BAY BLVD	Clearwater	Single Building Store	\$2,420,000	35,936	1962	\$49,929
2218 GULF TO BAY BLVD	Clearwater	Single Building Store	\$2,415,000	12,431	2001	\$47,026
2436 GULF TO BAY BLVD	Clearwater	Single Building Store	\$2,210,000	15,376	1989	\$43,252
1721 GULF TO BAY BLVD	Clearwater	Single Building Store	\$2,200,000	22,176	1995	\$45,961
27205 US HIGHWAY 19 N	Clearwater	Single Building Store	\$2,195,000	12,390	1991	\$38,243
415 MANDALAY AVE	Clearwater	Single Building Store	\$2,000,000	5,050	1955	\$39,188
2881 GULF TO BAY BLVD	Clearwater	Single Building Store	\$1,910,000	9,120	1989	\$37,543
30209 US HIGHWAY 19 N	Clearwater	Single Building Store	\$1,845,000	12,000	1974	\$32,145
3800 ULMERTON RD	Clearwater	Single Building Store	\$1,840,000	9,744	1982	\$37,623
29450 US HIGHWAY 19 N	Clearwater	Single Building Store	\$1,790,000	12,555	2006	\$31,894
1724 GULF TO BAY BLVD	Clearwater	Single Building Store	\$1,750,000	4,034	1965	\$33,866
700 S GULFVIEW BLVD	Clearwater	Single Building Store	\$1,670,000	7,784	2004	\$33,092
23055 US HIGHWAY 19 N	Clearwater	Single Building Store	\$1,655,000	7,142	2009	\$32,705
2355 GULF TO BAY BLVD	Clearwater	Single Building Store	\$1,550,000	7,364	2013	\$30,964
1728 S MISSOURI AVE	Clearwater	Single Building Store	\$1,500,000	7,176	2019	\$27,835
2430 GULF TO BAY BLVD	Clearwater	Single Building Store	\$1,465,000	7,360	2015	\$28,641
1200 N MYRTLE AVE	Clearwater	Single Building Store	\$1,460,000	8,320	2014	\$29,028
411 CLEVELAND ST	Clearwater	Single Building Store	\$1,375,000	8,598	1920	\$28,959
1835 N HIGHLAND AVE	Clearwater	Single Building Store	\$1,355,000	8,000	2014	\$27,093
16738 US HIGHWAY 19 N	Clearwater	Single Building Store	\$1,285,000	15,115	1987	\$24,919

Address	City	Type	Market Value	Sq Ft	Year	Annual Tax
24120 US HIGHWAY 19 N	Clearwater	Single Building Store	\$1,275,000	6,102	1996	\$25,351
29870 US HIGHWAY 19 N	Clearwater	Single Building Store	\$1,235,000	7,512	2003	\$21,738
1675 GULF TO BAY BLVD	Clearwater	Single Building Store	\$1,210,000	7,355	2000	\$24,964
1890 N HIGHLAND AVE	Clearwater	Single Building Store	\$1,210,000	6,831	2012	\$23,513
22991 US HIGHWAY 19 N	Clearwater	Single Building Store	\$1,180,000	6,478	1995	\$23,706
29383 US HIGHWAY 19 N	Clearwater	Single Building Store	\$1,140,000	4,290	1989	\$22,062
23399 US HIGHWAY 19 N	Clearwater	Single Building Store	\$1,135,000	9,240	1981	\$22,255
714 CLEVELAND ST	Clearwater	Single Building Store	\$1,125,000	5,707	1940	\$22,862
2460 GULF TO BAY BLVD	Clearwater	Single Building Store	\$1,115,000	6,678	1970	\$22,255
2472 GULF TO BAY BLVD	Clearwater	Single Building Store	\$1,100,000	6,560	1974	\$21,578
5990 ULMERTON RD	Clearwater	Single Building Store	\$1,090,000	10,106	1972	\$21,106
2436 STATE ROAD 580	Clearwater	Single Building Store	\$1,075,000	7,700	1978	\$16,378
2265 GULF TO BAY BLVD	Clearwater	Single Building Store	\$1,065,000	4,640	2010	\$21,287
321 CORONADO DR	Clearwater	Single Building Store	\$1,025,000	1,144	1951	\$20,417
28365 US HIGHWAY 19 N	Clearwater	Single Building Store	\$1,000,000	9,280	1985	\$17,423
314 S BELCHER RD	Clearwater	Single Building Store	\$975,000	6,021	1973	\$19,933
19042 US HIGHWAY 19 N	Clearwater	Single Building Store	\$930,000	4,880	1978	\$21,287
2430 STATE ROAD 580	Clearwater	Single Building Store	\$890,000	4,950	1977	\$15,855
1770 DREW ST	Clearwater	Single Building Store	\$890,000	9,900	1971	\$17,707
160 N BELCHER RD	Clearwater	Single Building Store	\$890,000	8,929	1961	\$17,514
800 CHESTNUT ST	Clearwater	Single Building Store	\$880,000	6,550	1973	\$18,493
912 S MISSOURI AVE	Clearwater	Single Building Store	\$870,000	4,170	2003	\$16,933
1277 S HIGHLAND AVE	Clearwater	Single Building Store	\$865,000	14,600	1963	\$17,417
1201 N HIGHLAND AVE	Clearwater	Single Building Store	\$865,000	5,272	1972	\$16,029
2670 GULF TO BAY BLVD	Clearwater	Single Building Store	\$860,000	2,880	1996	\$16,933

Address	City	Type	Market Value	Sq Ft	Year	Annual Tax
2881 GULF TO BAY BLVD	Clearwater	Single Building Store	\$855,000	6,492	1989	\$16,836
2126 DREW ST	Clearwater	Single Building Store	\$840,000	8,228	1980	\$16,933
603 S MISSOURI AVE	Clearwater	Single Building Store	\$815,000	6,110	1967	\$16,643
1620 GULF TO BAY BLVD	Clearwater	Single Building Store	\$800,000	6,243	1952	\$16,159
712 S MISSOURI AVE	Clearwater	Single Building Store	\$790,000	7,580	1961	\$16,256
23310 US HIGHWAY 19 N	Clearwater	Single Building Store	\$775,000	3,851	1985	\$15,482
2460 STATE ROAD 580	Clearwater	Single Building Store	\$750,000	3,225	2009	\$13,329
1107 N FT HARRISON AVE	Clearwater	Single Building Store	\$750,000	10,070	1973	\$14,998
130 STARCREST DR	Clearwater	Single Building Store	\$750,000	9,900	1974	\$15,385
23197 US HIGHWAY 19 N	Clearwater	Single Building Store	\$740,000	6,000	1983	\$14,804
625 S MISSOURI AVE	Clearwater	Single Building Store	\$740,000	7,927	1967	\$15,579
801 PARK ST	Clearwater	Single Building Store	\$726,800	10,749	1949	\$15,262
412 S MISSOURI AVE	Clearwater	Single Building Store	\$715,000	5,164	1981	\$14,708
1848 N HIGHLAND AVE	Clearwater	Single Building Store	\$715,000	4,980	1968	\$14,224
2260 GULF TO BAY BLVD	Clearwater	Single Building Store	\$696,000	2,178	1943	\$13,701
1530 S MISSOURI AVE	Clearwater	Single Building Store	\$685,000	8,080	1980	\$14,417
1600 N MYRTLE AVE	Clearwater	Single Building Store	\$670,000	6,700	1996	\$14,321
708 CHESTNUT ST	Clearwater	Single Building Store	\$660,700	8,316	1949	\$13,717
25032 US HIGHWAY 19 N	Clearwater	Single Building Store	\$650,000	3,750	1973	\$12,869
1641 GULF TO BAY BLVD	Clearwater	Single Building Store	\$645,000	4,200	2002	\$14,321
205 BELCHER RD	Clearwater	Single Building Store	\$635,000	5,084	1972	\$12,772
1160 COURT ST	Clearwater	Single Building Store	\$635,000	7,003	1965	\$13,740
1111 COURT ST	Clearwater	Single Building Store	\$635,000	7,135	1958	\$12,676
413 MANDALAY AVE	Clearwater	Single Building Store	\$610,000	2,496	1950	\$12,095
5990 ULMERTON RD	Clearwater	Single Building Store	\$580,000	3,200	1999	\$11,379

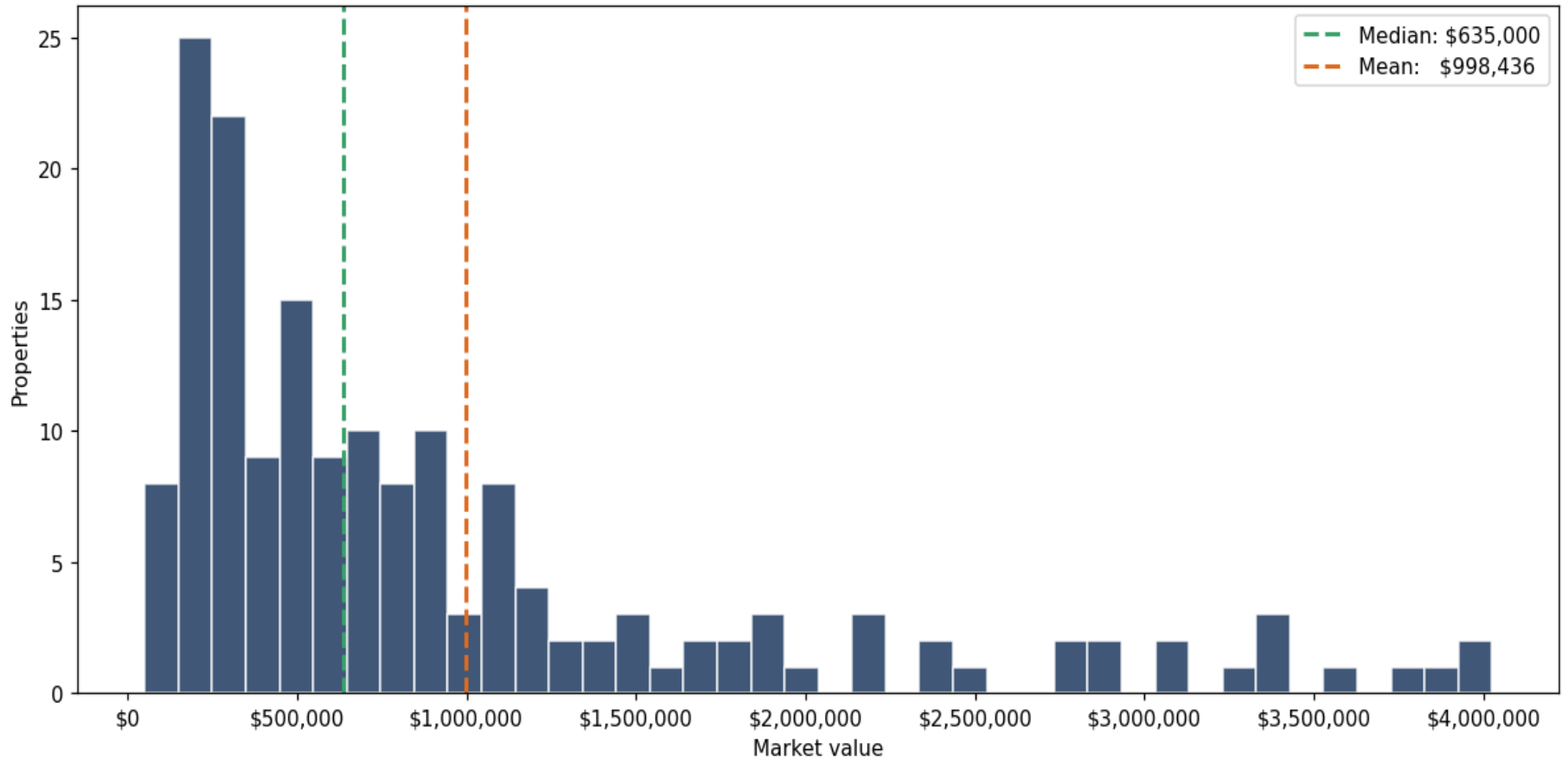
Address	City	Type	Market Value	Sq Ft	Year	Annual Tax
29857 US HIGHWAY 19 N	Clearwater	Single Building Store	\$560,000	3,000	1985	\$9,757
2468 STATE ROAD 580	Clearwater	Single Building Store	\$555,000	2,376	1977	\$9,931
1420 S MISSOURI AVE	Clearwater	Single Building Store	\$555,000	10,130	1963	\$11,515
1467 GULF TO BAY BLVD	Clearwater	Single Building Store	\$545,000	4,800	1991	\$11,128
1269 S HIGHLAND AVE	Clearwater	Single Building Store	\$535,000	6,000	1964	\$10,740
1498 GULF TO BAY BLVD	Clearwater	Single Building Store	\$535,000	6,000	1948	\$10,740
6250 ULMERTON RD	Clearwater	Single Building Store	\$530,000	2,840	1982	\$10,278
700 COURT ST	Clearwater	Single Building Store	\$520,000	4,073	1947	\$11,482
14411 US HIGHWAY 19 N	Clearwater	Single Building Store	\$510,000	3,022	1969	\$9,452
613 S MISSOURI AVE	Clearwater	Single Building Store	\$500,000	4,508	1958	\$10,063
1284 S MISSOURI AVE	Clearwater	Single Building Store	\$500,000	4,160	1969	\$10,353
1280 COURT ST	Clearwater	Single Building Store	\$495,000	3,200	1973	\$10,160
1421 S MISSOURI AVE	Clearwater	Single Building Store	\$490,000	6,480	1955	\$9,870
535 ROGERS ST	Clearwater	Single Building Store	\$485,000	2,850	1959	\$9,870
34 N GARDEN AVE	Clearwater	Single Building Store	\$480,000	4,016	1921	\$10,466
1100 S MYRTLE AVE	Clearwater	Single Building Store	\$466,800	1,080	1964	\$9,366
1414 S MISSOURI AVE	Clearwater	Single Building Store	\$465,000	4,400	1960	\$10,257
1300 N FT HARRISON AVE	Clearwater	Single Building Store	\$465,000	2,112	1953	\$8,999
2516 SUNSET POINT RD	Clearwater	Single Building Store	\$445,000	2,842	1973	\$9,386
1447 S FT HARRISON AVE	Clearwater	Single Building Store	\$440,000	2,663	1949	\$8,999
1424 S MISSOURI AVE	Clearwater	Single Building Store	\$420,000	4,410	1963	\$8,805
2241 NURSERY RD	Clearwater	Single Building Store	\$410,000	4,092	1988	\$8,515
2332 STATE ROAD 580	Clearwater	Single Building Store	\$381,000	1,729	1954	\$6,628
321 S MISSOURI AVE	Clearwater	Single Building Store	\$380,000	4,477	1960	\$7,644
714 N FT HARRISON AVE	Clearwater	Single Building Store	\$359,000	1,540	1961	\$7,199

Address	City	Type	Market Value	Sq Ft	Year	Annual Tax
1983 DREW ST	Clearwater	Single Building Store	\$355,000	3,920	1958	\$7,741
624 S MISSOURI AVE	Clearwater	Single Building Store	\$350,000	1,600	1969	\$6,773
805 COURT ST	Clearwater	Single Building Store	\$340,000	2,951	1958	\$7,214
1919 DREW ST	Clearwater	Single Building Store	\$340,000	2,660	1954	\$6,677
1903 DOUGLAS AVE	Clearwater	Single Building Store	\$335,000	3,970	1960	\$6,185
1640 S MYRTLE AVE	Clearwater	Single Building Store	\$331,400	3,758	1958	\$6,451
1001 BELLEAIR RD	Clearwater	Single Building Store	\$330,000	4,034	1960	\$6,362
2180 N HERCULES AVE	Clearwater	Single Building Store	\$330,000	3,204	1958	\$6,446
1631 GULF TO BAY BLVD	Clearwater	Single Building Store	\$330,000	3,200	1974	\$7,451
2999 GULF TO BAY BLVD	Clearwater	Single Building Store	\$325,000	1,560	1974	\$6,580
2340 SUNSET POINT RD	Clearwater	Single Building Store	\$310,000	2,161	1972	\$6,289
1350 CLEVELAND ST	Clearwater	Single Building Store	\$310,000	2,748	1952	\$6,580
926 CLEVELAND ST	Clearwater	Single Building Store	\$305,000	2,900	1965	\$6,259
1451 S MISSOURI AVE	Clearwater	Single Building Store	\$300,000	2,086	1990	\$5,837
321 N FT HARRISON AVE	Clearwater	Single Building Store	\$300,000	3,112	1951	\$6,096
13400 US HIGHWAY 19 N	Clearwater	Single Building Store	\$300,000	1,736	1959	\$5,390
2001 DREW ST	Clearwater	Single Building Store	\$295,000	1,590	1956	\$5,709
1679 DREW ST	Clearwater	Single Building Store	\$280,000	2,446	1967	\$5,999
1625 N FT HARRISON AVE	Clearwater	Single Building Store	\$275,000	2,426	1974	\$5,612
2530 SUNSET POINT RD	Clearwater	Single Building Store	\$275,000	1,640	1993	\$5,999
1300 S MISSOURI AVE	Clearwater	Single Building Store	\$265,000	2,296	1948	\$5,806
1492 S MISSOURI AVE	Clearwater	Single Building Store	\$265,000	672	1951	\$5,128
123 N MARTIN LUTHER KING JR AVE	Clearwater	Single Building Store	\$260,000	2,394	1938	\$5,225
1554 S FT HARRISON AVE	Clearwater	Single Building Store	\$255,000	1,284	1953	\$5,225
1310 S MISSOURI AVE	Clearwater	Single Building Store	\$245,000	2,100	1957	\$5,225

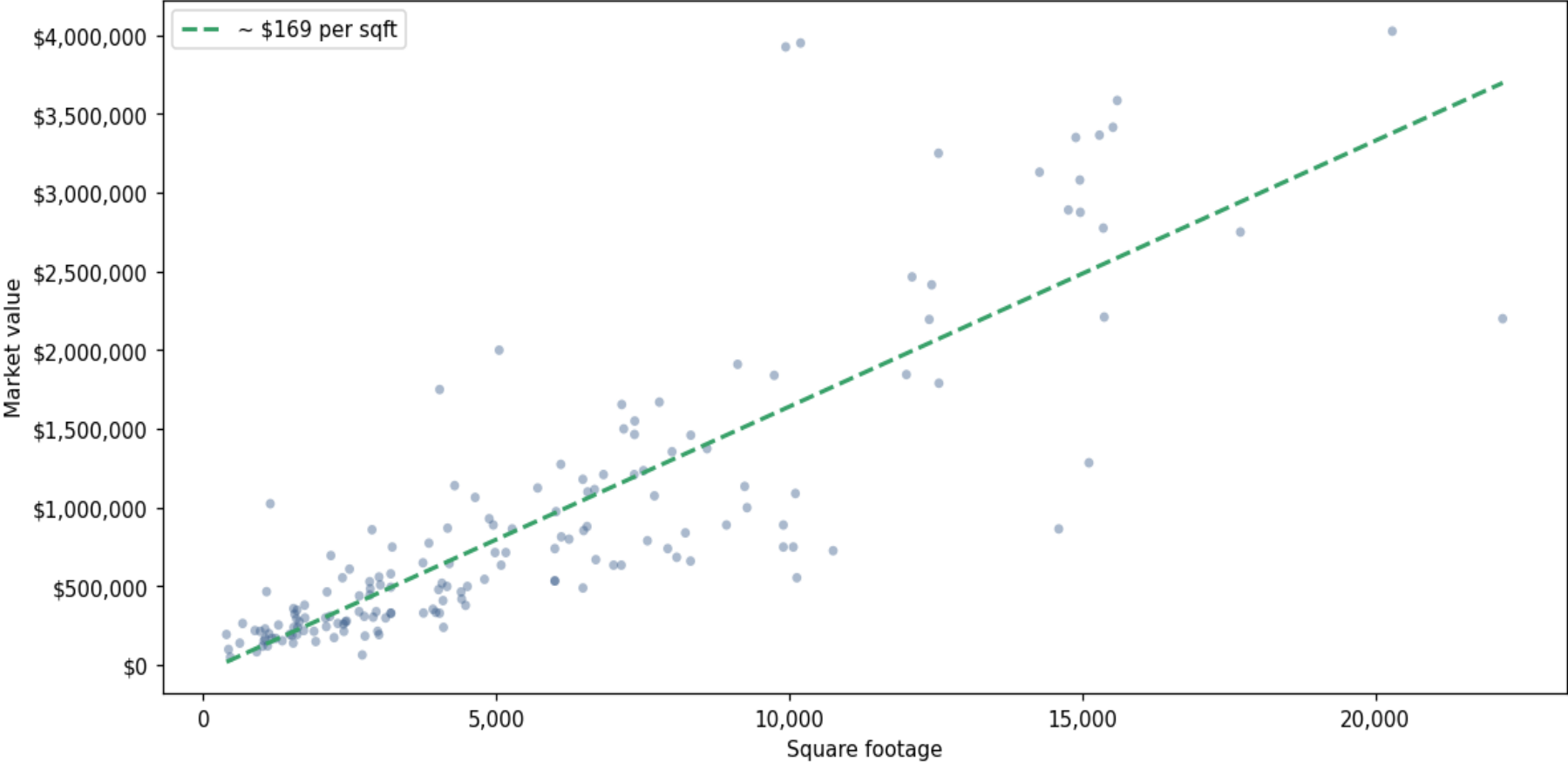
Address	City	Type	Market Value	Sq Ft	Year	Annual Tax
1225 FRANKLIN CIR NW	Clearwater	Single Building Store	\$240,000	4,100	1965	\$4,838
2200 N HERCULES AVE	Clearwater	Single Building Store	\$240,000	1,610	1957	\$4,443
805 S FT HARRISON AVE	Clearwater	Single Building Store	\$240,000	1,544	1951	\$4,741
805 TURNER ST	Clearwater	Single Building Store	\$230,000	1,056	1920	\$4,741
801 TURNER ST	Clearwater	Single Building Store	\$220,000	882	1930	\$4,354
1345 N HIGHLAND AVE	Clearwater	Single Building Store	\$220,000	1,715	1961	\$4,354
401 S MERCURY AVE	Clearwater	Single Building Store	\$215,000	972	1950	\$4,257
6263 150TH AVE N	Clearwater	Single Building Store	\$215,000	1,890	1973	\$4,129
1487 S FT HARRISON AVE	Clearwater	Single Building Store	\$215,000	2,976	1945	\$4,257
2596 NURSERY RD	Clearwater	Single Building Store	\$215,000	2,400	1966	\$4,838
1390 GULF TO BAY BLVD	Clearwater	Single Building Store	\$200,000	1,122	1955	\$3,870
1400 GULF TO BAY BLVD	Clearwater	Single Building Store	\$195,000	1,600	1968	\$4,645
1356 CLEVELAND ST	Clearwater	Single Building Store	\$195,000	1,474	1958	\$4,064
1267 S HIGHLAND AVE	Clearwater	Single Building Store	\$195,000	396	1966	\$3,967
807 PARK ST	Clearwater	Single Building Store	\$193,900	3,000	1949	\$3,943
811 COURT ST	Clearwater	Single Building Store	\$190,000	1,516	1957	\$3,963
1205 N MARTIN LUTHER KING JR AVE	Clearwater	Single Building Store	\$185,000	2,760	1960	\$4,064
504 N FT HARRISON AVE	Clearwater	Single Building Store	\$175,000	2,233	1948	\$4,257
1500 S MISSOURI AVE	Clearwater	Single Building Store	\$170,000	1,176	1955	\$3,387
1533 S MISSOURI AVE	Clearwater	Single Building Store	\$170,000	1,056	1954	\$2,962
2705 CYPRESS DR	Clearwater	Single Building Store	\$170,000	1,238	1957	\$3,118
1425 S FT HARRISON AVE	Clearwater	Single Building Store	\$155,000	1,348	1946	\$3,193
1349 N HIGHLAND AVE	Clearwater	Single Building Store	\$155,000	1,035	1967	\$3,096
1215 N MARTIN LUTHER KING JR AVE	Clearwater	Single Building Store	\$150,000	1,920	1987	\$3,193
1429 S FT HARRISON AVE	Clearwater	Single Building Store	\$140,500	1,536	1956	\$2,864

Address	City	Type	Market Value	Sq Ft	Year	Annual Tax
1401 GULF TO BAY BLVD	Clearwater	Single Building Store	\$140,000	624	1951	\$3,193
805 PARK ST	Clearwater	Single Building Store	\$122,500	1,100	1946	\$2,642
1403 GULF TO BAY BLVD	Clearwater	Single Building Store	\$120,000	1,010	1951	\$2,903
1701 N FT HARRISON AVE	Clearwater	Single Building Store	\$100,000	431	1958	\$2,129
905 PALMETTO ST	Clearwater	Single Building Store	\$85,000	912	1965	\$1,935
1115 N MARTIN LUTHER KING JR AVE	Clearwater	Single Building Store	\$65,000	2,714	1955	\$1,393
1105 ENGMAN ST	Clearwater	Single Building Store	\$50,500	461	1952	\$1,103

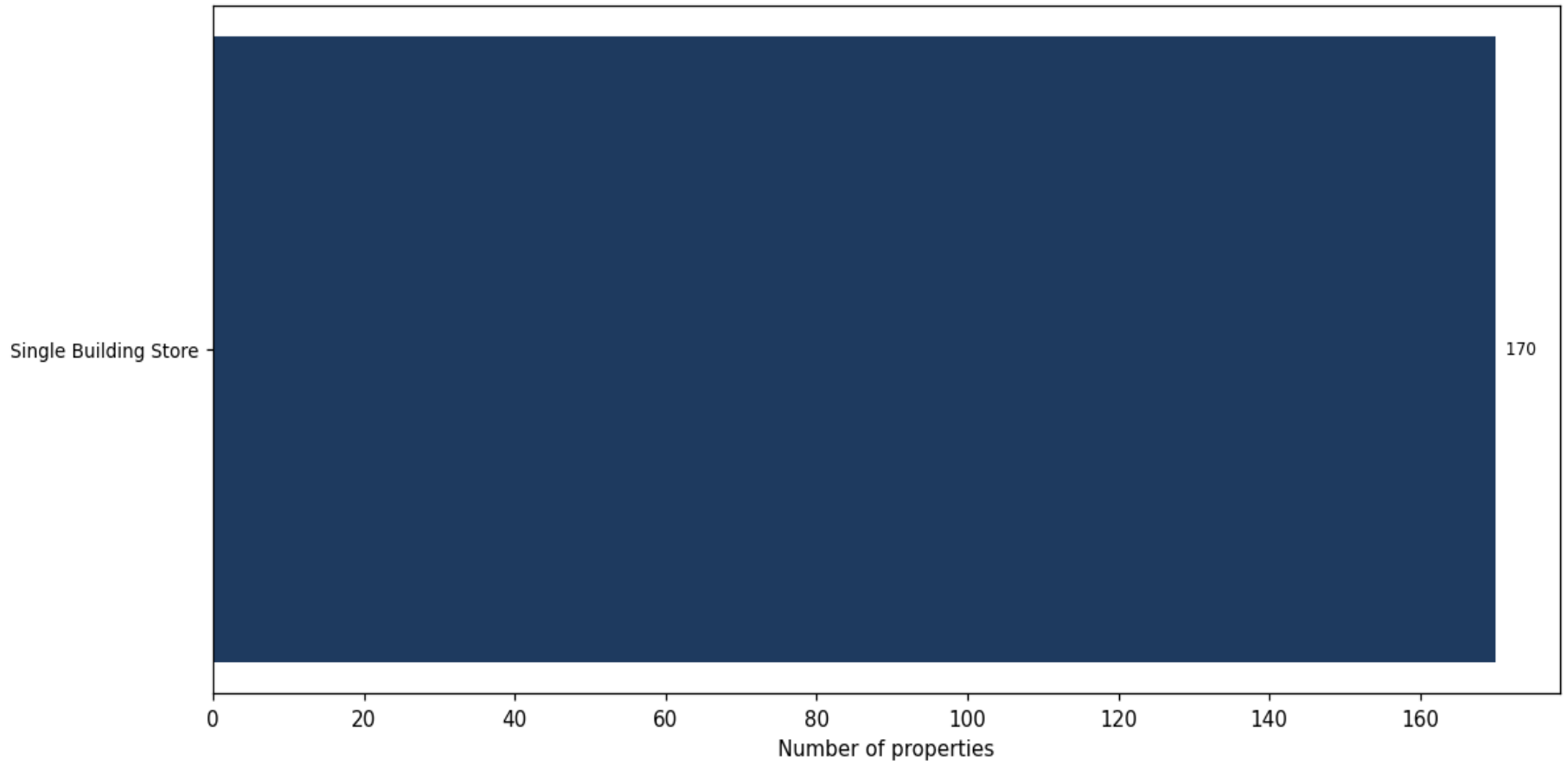
Market value distribution (n=170, top 1% trimmed for readability)



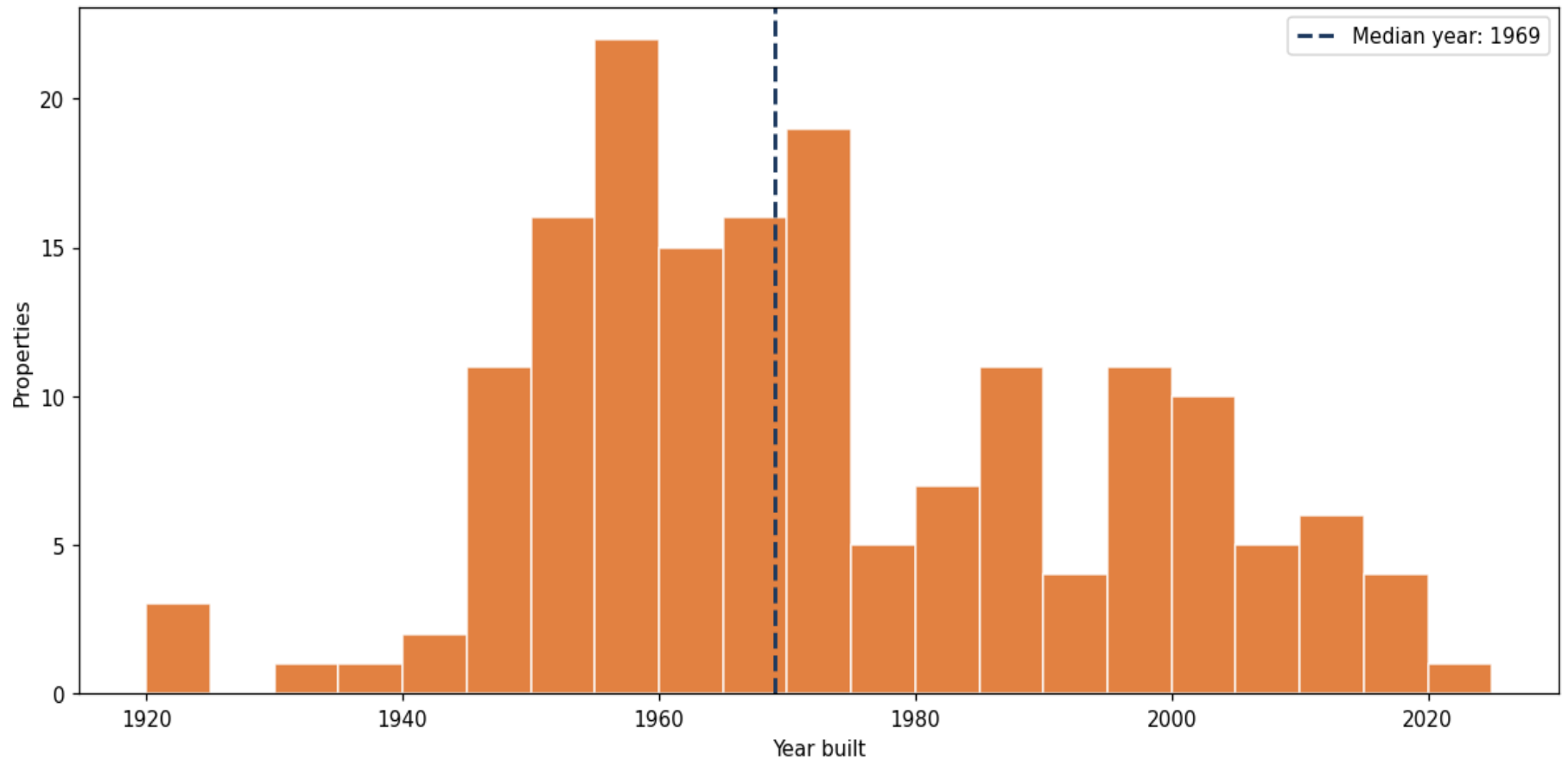
Building size vs. market value (n=166, outliers trimmed)



Top property types by count



Year built distribution (5-year buckets)



Market value vs. assessed value (gap = untaxed appreciation)

