

# Pinellas Property Market Report

43 matching properties • May 30, 2026

Filters applied	Headline numbers
<b>City:</b> Clearwater	<b>Properties matched:</b> 43
<b>Property type:</b> Private Schools	<b>Median market value:</b> \$595,000
	<b>Mean market value:</b> \$3,406,015
	<b>Min / Max:</b> \$75,000 / \$84,931,623
	<b>Mean square footage:</b> 24,592

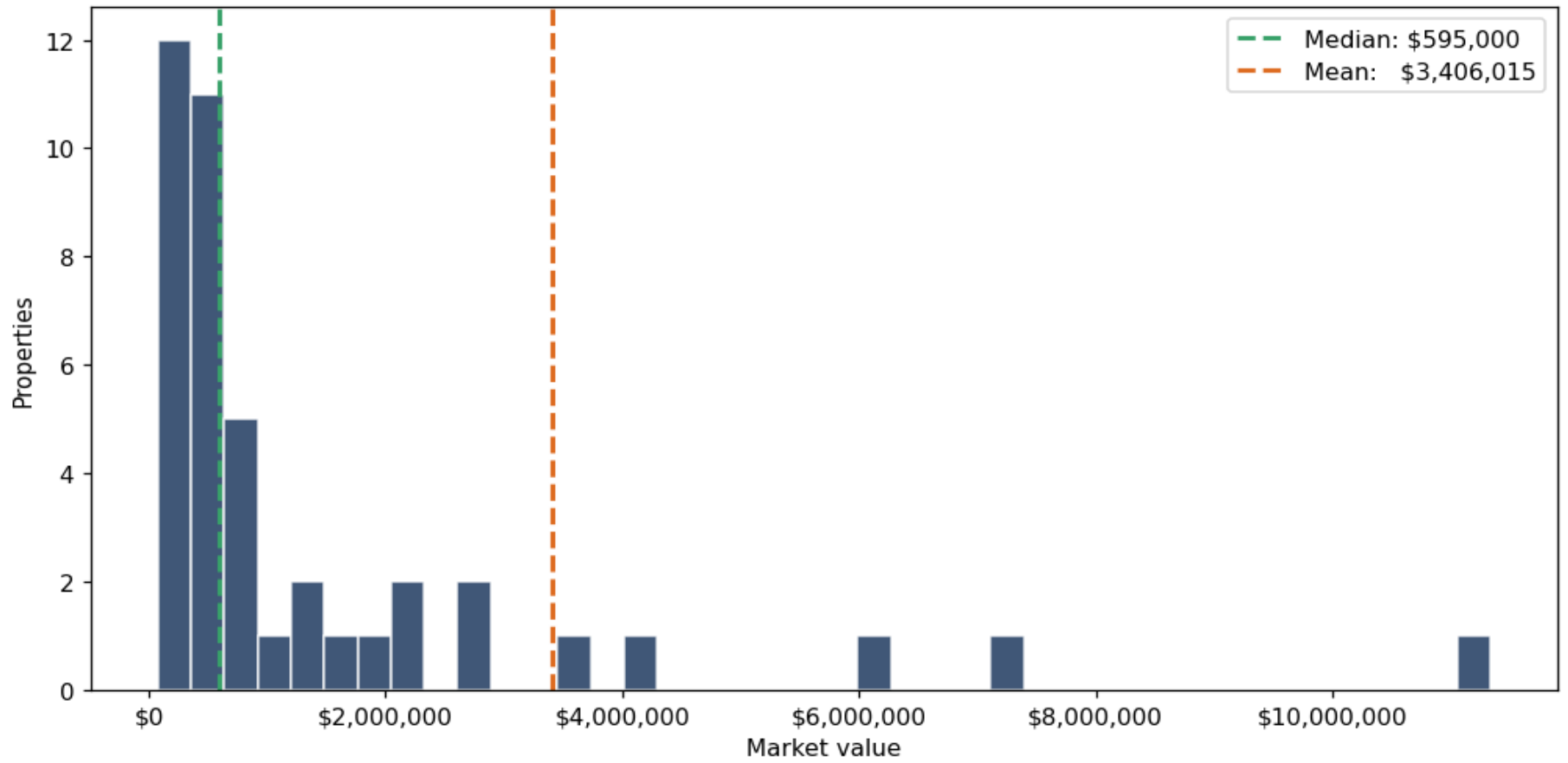
## Top 43 properties by market value

Address	City	Type	Market Value	Sq Ft	Year	Annual Tax
3400 GULF TO BAY BLVD	Clearwater	Private Schools & Colleg	\$84,931,623	563,328	2019	\$1,673,659
2045 PALMETTO ST	Clearwater	Private Schools & Colleg	\$11,335,403	58,244	2014	\$215,852
2433 NURSERY RD	Clearwater	Private Schools & Colleg	\$7,150,000	53,289	1986	\$142,529
1005 S HIGHLAND AVE	Clearwater	Private Schools & Colleg	\$6,000,000	56,749	1966	\$119,597
28272 US HIGHWAY 19 N	Clearwater	Private Schools & Colleg	\$4,200,000	30,152	1981	\$77,686
1845 DREW ST	Clearwater	Private Schools & Colleg	\$3,525,000	46,360	1968	\$70,636
801 DREW ST	Clearwater	Private Schools & Colleg	\$2,850,000	18,405	1998	\$60,255
3090 SUNSET POINT RD	Clearwater	Private Schools & Colleg	\$2,675,000	11,962	1989	\$48,958
13455 US HIGHWAY 19 N	Clearwater	Private Schools & Colleg	\$2,300,000	30,712	1960	\$42,670
6225 ULMERTON RD	Clearwater	Private Schools & Colleg	\$2,150,000	31,342	1960	\$39,826
2495 ENTERPRISE RD	Clearwater	Private Schools & Colleg	\$1,945,000	15,148	1985	\$38,995
908 CLEVELAND ST	Clearwater	Private Schools & Colleg	\$1,500,000	9,465	1990	\$32,007
13348 US HIGHWAY 19 N	Clearwater	Private Schools & Colleg	\$1,320,000	8,684	2006	\$24,477

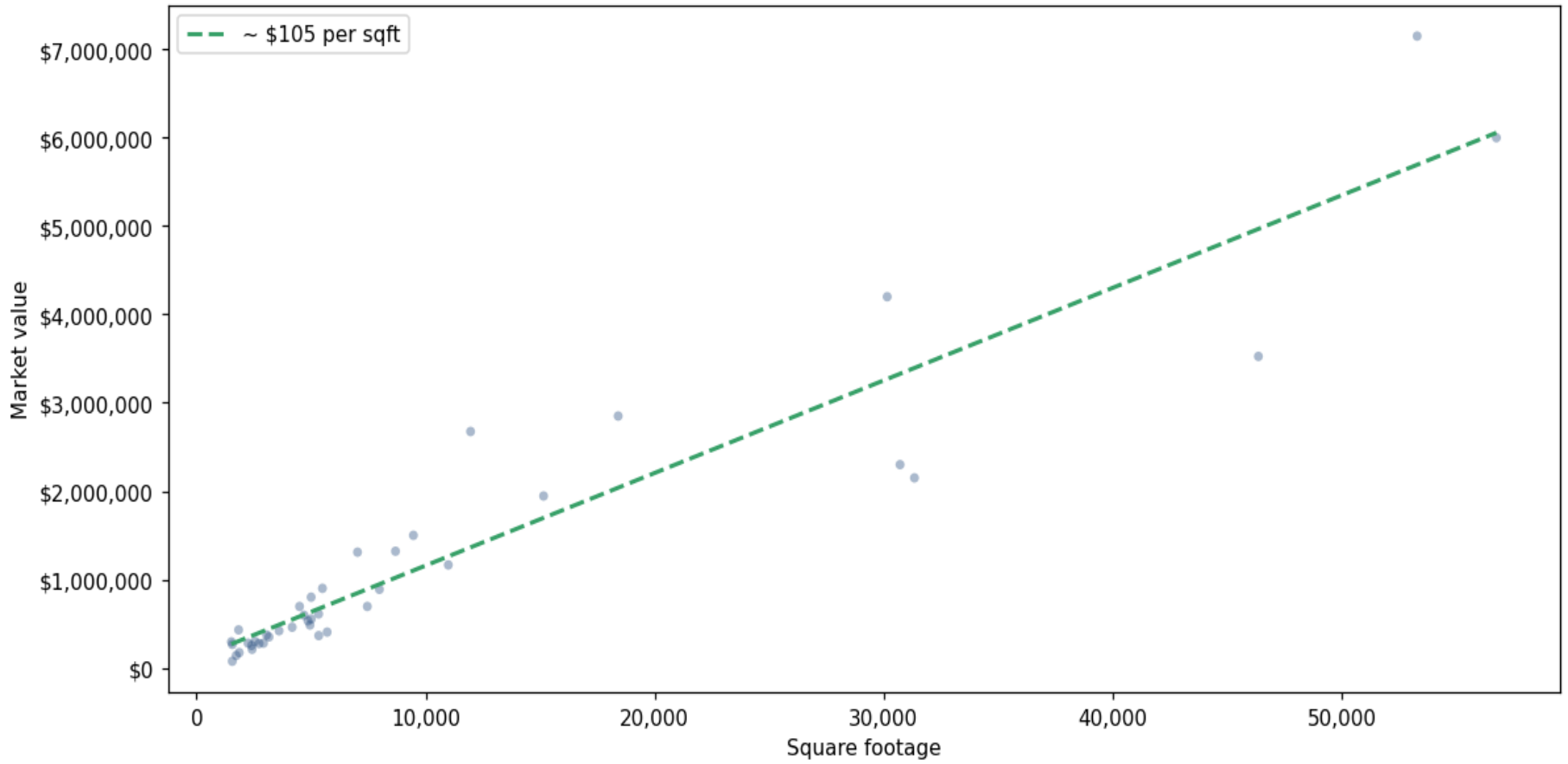
Address	City	Type	Market Value	Sq Ft	Year	Annual Tax
1411 N FT HARRISON AVE	Clearwater	Private Schools & Colleg	\$1,309,247	7,026	1923	\$24,289
2177 NE COACHMAN RD	Clearwater	Private Schools & Colleg	\$1,165,000	10,990	1959	\$23,610
802 TURNER ST	Clearwater	Private Schools & Colleg	\$900,000	5,494	1988	\$18,288
701 N MISSOURI AVE	Clearwater	Private Schools & Colleg	\$888,508	7,980	2024	\$17,804
1112 LAKEVIEW RD	Clearwater	Private Schools & Colleg	\$800,000	5,000	1986	\$16,159
2122 N HERCULES AVE	Clearwater	Private Schools & Colleg	\$695,000	7,452	1934	\$12,544
1880 N MCMULLEN BOOTH RD	Clearwater	Private Schools & Colleg	\$695,000	4,495	1981	\$14,127
1633 N BELCHER RD	Clearwater	Private Schools & Colleg	\$610,000	5,328	1963	\$11,222
1419 SUNSET POINT RD	Clearwater	Private Schools & Colleg	\$595,000	4,688	1986	\$14,030
3130 N MCMULLEN BOOTH RD	Clearwater	Private Schools & Colleg	\$552,500	5,005	1965	\$11,128
2644 STATE ROAD 590	Clearwater	Private Schools & Colleg	\$532,500	4,862	1980	\$9,757
511 S HERCULES AVE	Clearwater	Private Schools & Colleg	\$485,000	4,950	1970	\$9,870
2671 SUNSET POINT RD	Clearwater	Private Schools & Colleg	\$460,000	4,172	1952	\$8,363
105 N LADY MARY DR	Clearwater	Private Schools & Colleg	\$430,000	1,833	1957	\$8,999
1911 ATLANTIS DR	Clearwater	Private Schools & Colleg	\$420,000	3,599	1977	\$8,515
1301 N HIGHLAND AVE	Clearwater	Private Schools & Colleg	\$405,000	5,699	1971	\$8,234
2855 HAINES BAYSHORE RD	Clearwater	Private Schools & Colleg	\$372,282	3,056	1963	\$6,502
1045 N MARTIN LUTHER KING JR AVE	Clearwater	Private Schools & Colleg	\$365,000	5,332	1945	\$7,451
15495 58TH ST N	Clearwater	Private Schools & Colleg	\$350,000	3,160	2023	\$6,745
2886 WHITNEY RD	Clearwater	Private Schools & Colleg	\$300,000	2,554	1984	\$5,781
2201 CURTIS DR S	Clearwater	Private Schools & Colleg	\$294,584	1,518	1959	\$5,166
1194 GROVE ST	Clearwater	Private Schools & Colleg	\$280,000	2,245	1953	\$5,709
2480 BELLEAIR RD	Clearwater	Private Schools & Colleg	\$280,000	2,920	1970	\$5,140
920 PALMETTO ST	Clearwater	Private Schools & Colleg	\$275,509	2,728	1960	\$5,510
1215 LAKEVIEW RD	Clearwater	Private Schools & Colleg	\$265,000	1,558	1955	\$4,878

Address	City	Type	Market Value	Sq Ft	Year	Annual Tax
1100 N MARTIN LUTHER KING JR AVE	Clearwater	Private Schools & Colleg	\$253,980	2,400	1947	\$4,979
2742 PINE TREE LN	Clearwater	Private Schools & Colleg	\$210,000	2,422	1974	\$3,842
1259 BELLEAIR RD	Clearwater	Private Schools & Colleg	\$172,500	1,862	1955	\$3,181
701 N MISSOURI AVE	Clearwater	Private Schools & Colleg	\$140,000	1,728	1990	\$2,903
1611 N FT HARRISON AVE	Clearwater	Private Schools & Colleg	\$75,000	1,556	1925	\$1,548

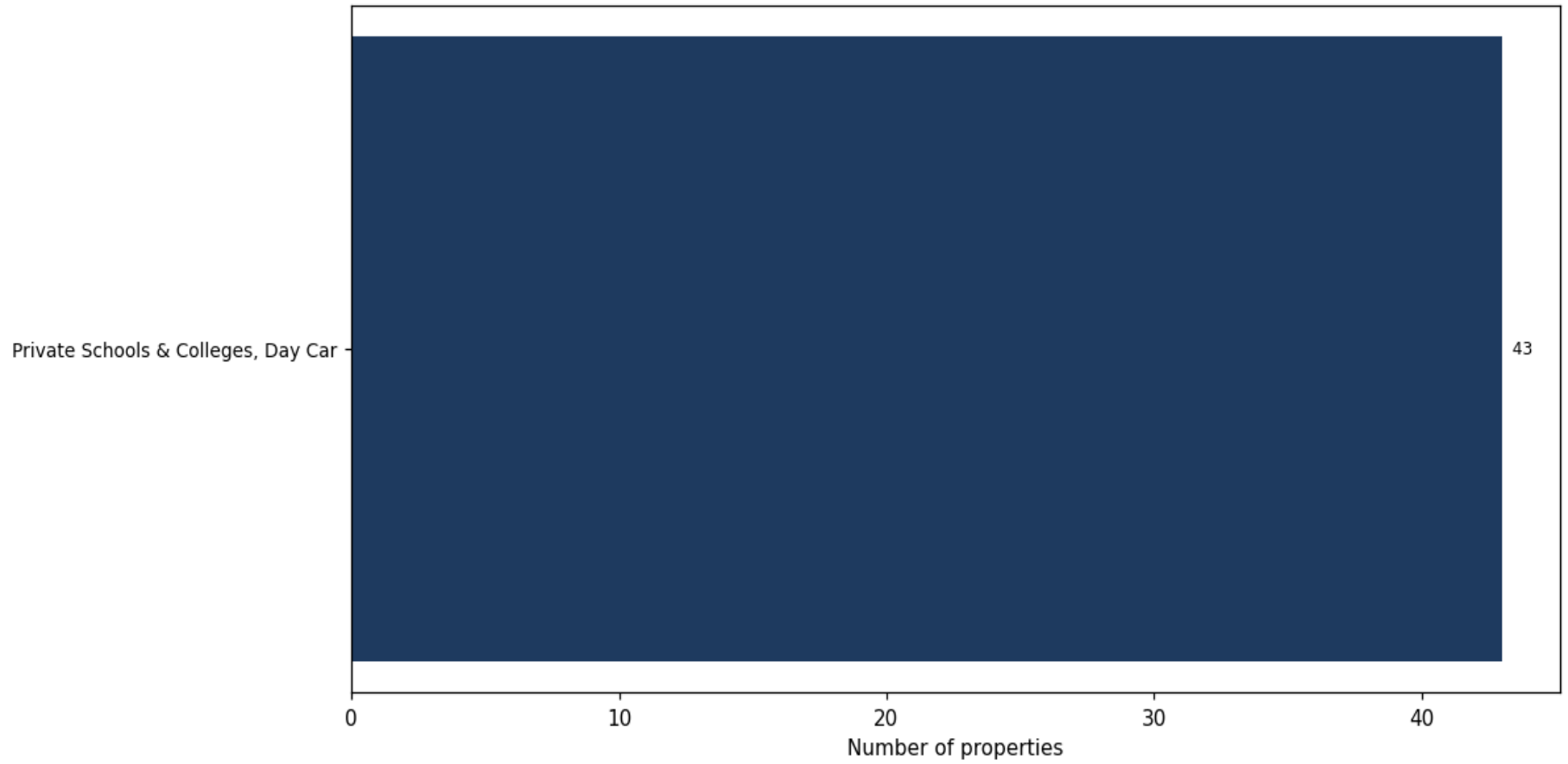
**Market value distribution (n=43, top 1% trimmed for readability)**



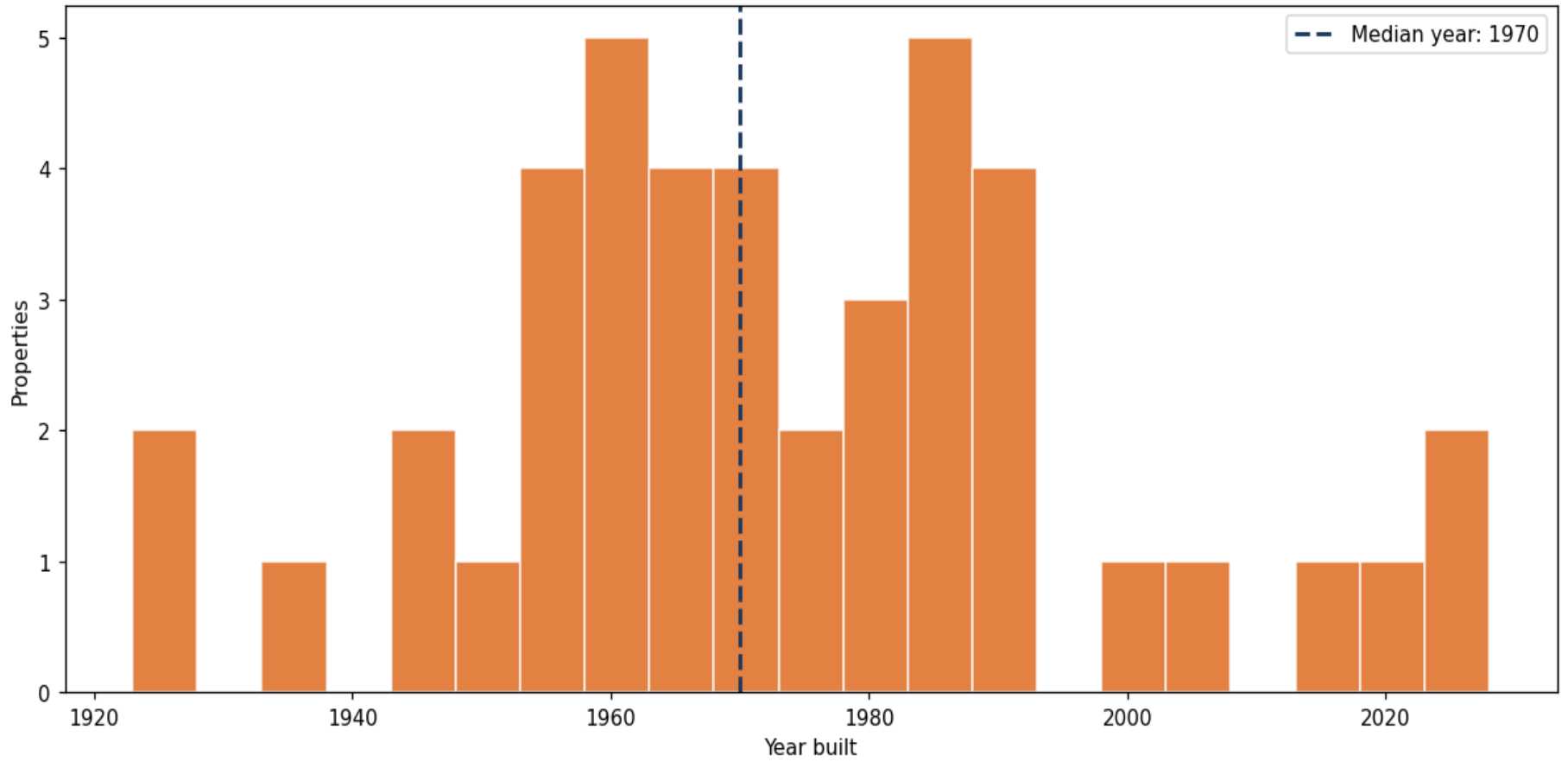
**Building size vs. market value (n=41, outliers trimmed)**



### Top property types by count



**Year built distribution (5-year buckets)**



### Market value vs. assessed value (gap = untaxed appreciation)

