

Pinellas Property Market Report

73 matching properties • May 30, 2026

Filters applied	Headline numbers
City: Clearwater	Properties matched: 73
Property type: Hotels and Motels (49 units or less)	Median market value: \$1,280,000
	Mean market value: \$1,565,362
	Min / Max: \$250,000 / \$7,800,000
	Mean square footage: 7,346

Top 73 properties by market value

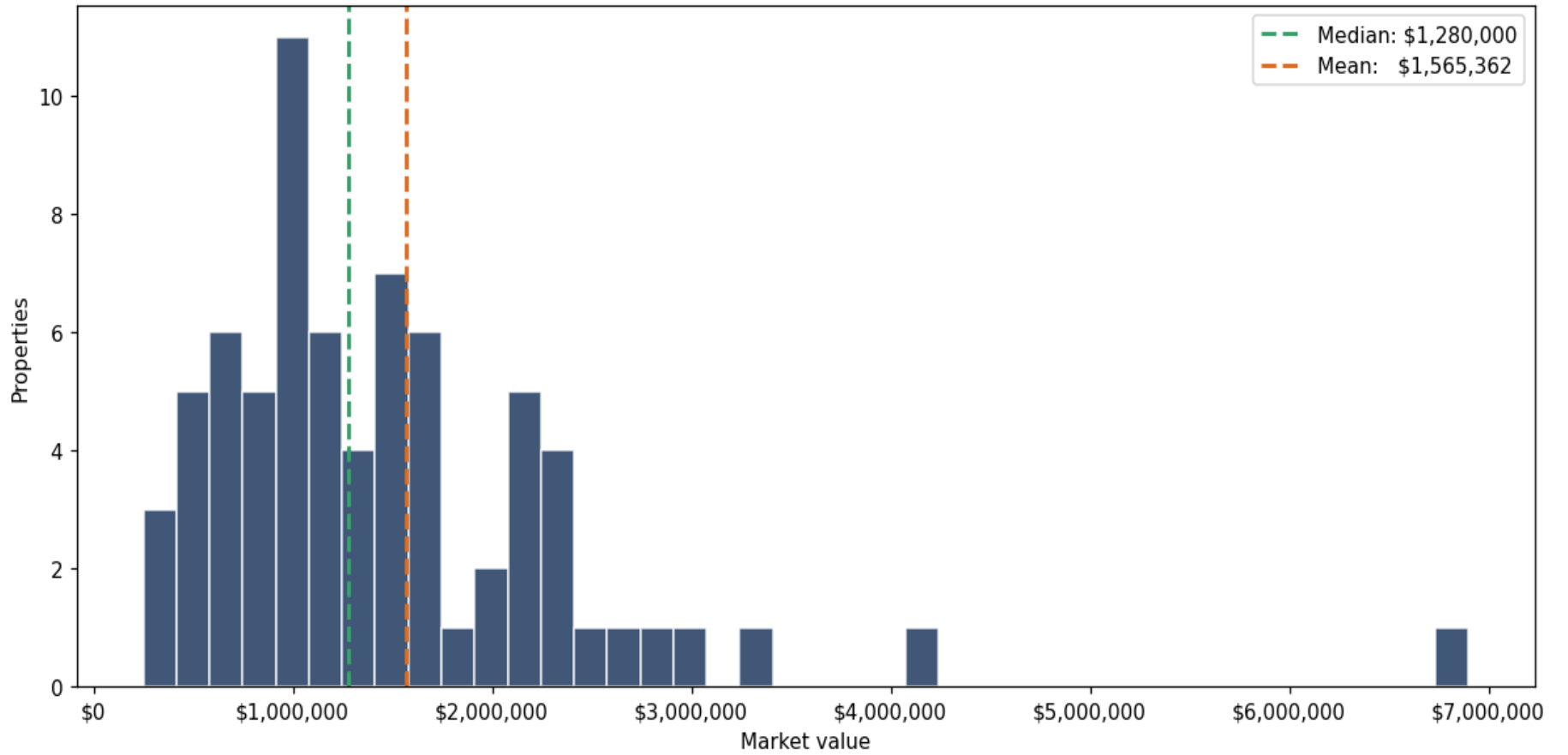
Address	City	Type	Market Value	Sq Ft	Year	Annual Tax
648 POINSETTIA AVE	Clearwater	Hotels and Motels (49 un	\$7,800,000	21,493	1960	\$156,753
678 S GULFVIEW BLVD	Clearwater	Hotels and Motels (49 un	\$6,900,000	26,170	1982	\$151,915
1941 EDGEWATER DR	Clearwater	Hotels and Motels (49 un	\$4,100,000	30,008	2002	\$80,699
455 S GULFVIEW BLVD	Clearwater	Hotels and Motels (49 un	\$3,300,000	15,988	1965	\$123,370
115 BRIGHTWATER DR	Clearwater	Hotels and Motels (49 un	\$2,985,000	10,867	1952	\$61,734
1477 S FT HARRISON AVE	Clearwater	Hotels and Motels (49 un	\$2,800,000	10,366	1948	\$63,862
1630 GULF TO BAY BLVD	Clearwater	Hotels and Motels (49 un	\$2,650,000	14,422	1981	\$51,380
1320 CLEVELAND ST	Clearwater	Hotels and Motels (49 un	\$2,485,000	13,016	1964	\$49,251
621 BAY ESPLANADE	Clearwater	Hotels and Motels (49 un	\$2,400,000	9,936	1953	\$50,316
711 CLEVELAND ST	Clearwater	Hotels and Motels (49 un	\$2,375,000	24,669	1964	\$48,773
333 HAMDEN DR	Clearwater	Hotels and Motels (49 un	\$2,350,000	10,314	1956	\$47,993
1840 N FT HARRISON AVE	Clearwater	Hotels and Motels (49 un	\$2,303,916	5,856	1951	\$45,578
433 CORONADO DR	Clearwater	Hotels and Motels (49 un	\$2,200,000	5,549	1954	\$46,639

Address	City	Type	Market Value	Sq Ft	Year	Annual Tax
473 EAST SHORE DR	Clearwater	Hotels and Motels (49 un	\$2,190,000	6,092	1949	\$45,865
229 CORONADO DR	Clearwater	Hotels and Motels (49 un	\$2,170,000	11,312	1952	\$42,091
2275 GULF TO BAY BLVD	Clearwater	Hotels and Motels (49 un	\$2,115,000	15,661	1988	\$40,640
2061 GULF TO BAY BLVD	Clearwater	Hotels and Motels (49 un	\$2,100,000	20,483	1978	\$41,414
637 BAY ESPLANADE	Clearwater	Hotels and Motels (49 un	\$2,075,000	4,896	1968	\$42,575
653 MANDALAY AVE	Clearwater	Hotels and Motels (49 un	\$2,050,000	8,864	1948	\$40,640
423 EAST SHORE DR	Clearwater	Hotels and Motels (49 un	\$1,750,000	7,172	1961	\$39,575
216 HAMDEN DR	Clearwater	Hotels and Motels (49 un	\$1,700,000	8,436	1957	\$33,866
602 POINSETTIA AVE	Clearwater	Hotels and Motels (49 un	\$1,675,000	4,251	1948	\$33,576
403 EAST SHORE DR	Clearwater	Hotels and Motels (49 un	\$1,650,000	4,664	1950	\$33,770
1735 GULF TO BAY BLVD	Clearwater	Hotels and Motels (49 un	\$1,640,000	10,817	1953	\$31,931
669 MANDALAY AVE	Clearwater	Hotels and Motels (49 un	\$1,600,000	7,578	1947	\$32,608
401 EAST SHORE DR	Clearwater	Hotels and Motels (49 un	\$1,600,000	7,632	1955	\$34,447
475 POINSETTIA AVE	Clearwater	Hotels and Motels (49 un	\$1,575,000	2,540	1976	\$31,738
2431 GULF TO BAY BLVD	Clearwater	Hotels and Motels (49 un	\$1,550,000	4,246	1952	\$37,737
657 MANDALAY AVE	Clearwater	Hotels and Motels (49 un	\$1,550,000	10,618	1949	\$31,641
627 BAY ESPLANADE	Clearwater	Hotels and Motels (49 un	\$1,475,000	3,468	1951	\$30,383
617 BAY ESPLANADE	Clearwater	Hotels and Motels (49 un	\$1,450,000	3,800	1951	\$28,835
50 ROYAL WAY	Clearwater	Hotels and Motels (49 un	\$1,430,000	7,724	1958	\$29,222
606 BAY ESPLANADE	Clearwater	Hotels and Motels (49 un	\$1,425,000	3,512	1952	\$28,254
440 EAST SHORE DR	Clearwater	Hotels and Motels (49 un	\$1,365,000	5,298	1950	\$29,996
50 SOMERSET ST	Clearwater	Hotels and Motels (49 un	\$1,325,000	5,154	1968	\$26,706
1736 GULF TO BAY BLVD	Clearwater	Hotels and Motels (49 un	\$1,315,000	10,758	1953	\$25,642
345 HAMDEN DR	Clearwater	Hotels and Motels (49 un	\$1,280,000	6,427	1955	\$26,125
342 HAMDEN DR	Clearwater	Hotels and Motels (49 un	\$1,245,000	5,840	1954	\$30,093

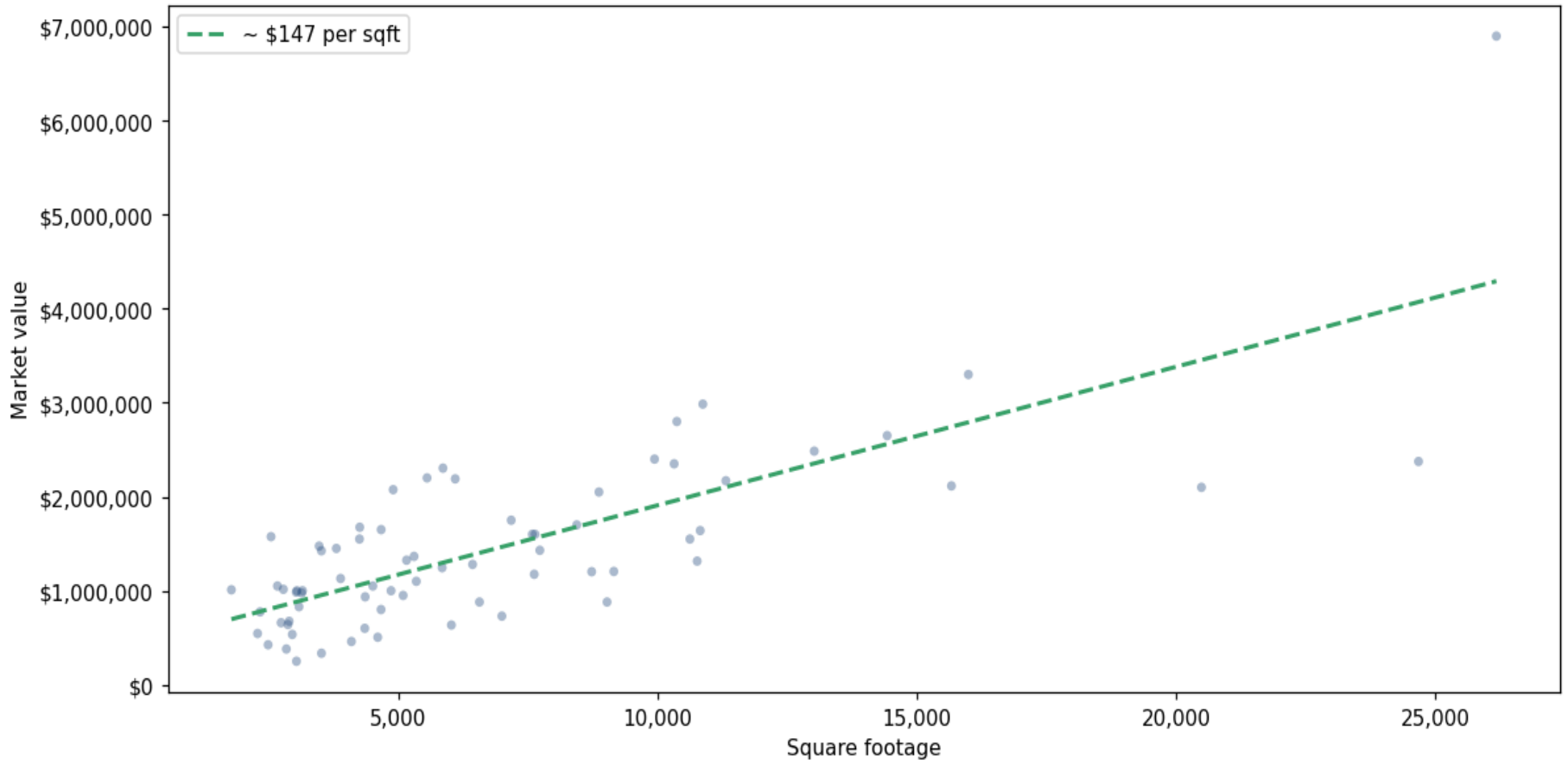
Address	City	Type	Market Value	Sq Ft	Year	Annual Tax
1471 COURT ST	Clearwater	Hotels and Motels (49 un	\$1,205,000	9,151	1950	\$23,513
1824 N FT HARRISON AVE	Clearwater	Hotels and Motels (49 un	\$1,202,489	8,724	1950	\$19,923
332 HAMDEN DR	Clearwater	Hotels and Motels (49 un	\$1,175,000	7,616	1957	\$26,706
22 KENDALL ST	Clearwater	Hotels and Motels (49 un	\$1,130,000	3,882	1948	\$22,836
647 BAY ESPLANADE	Clearwater	Hotels and Motels (49 un	\$1,100,000	5,342	1952	\$24,674
134 BRIGHTWATER DR	Clearwater	Hotels and Motels (49 un	\$1,050,000	2,664	1955	\$20,320
1466 DE LEON ST	Clearwater	Hotels and Motels (49 un	\$1,050,000	4,504	1951	\$28,061
629 BAY ESPLANADE	Clearwater	Hotels and Motels (49 un	\$1,015,000	2,778	1957	\$20,804
635 BAY ESPLANADE	Clearwater	Hotels and Motels (49 un	\$1,010,000	1,776	1956	\$20,804
105 BRIGHTWATER DR	Clearwater	Hotels and Motels (49 un	\$1,000,000	3,148	1955	\$20,707
607 BAY ESPLANADE	Clearwater	Hotels and Motels (49 un	\$1,000,000	3,040	1956	\$21,287
441 EAST SHORE DR	Clearwater	Hotels and Motels (49 un	\$1,000,000	4,855	1946	\$23,706
139 BRIGHTWATER DR	Clearwater	Hotels and Motels (49 un	\$985,000	3,027	1957	\$19,062
123 BRIGHTWATER DR	Clearwater	Hotels and Motels (49 un	\$975,000	3,132	1956	\$20,320
425 EAST SHORE DR	Clearwater	Hotels and Motels (49 un	\$950,000	5,088	1950	\$21,191
415 HAMDEN DR	Clearwater	Hotels and Motels (49 un	\$935,000	4,356	1953	\$20,320
1488 GULF TO BAY BLVD	Clearwater	Hotels and Motels (49 un	\$880,000	9,020	1949	\$17,417
1814 GULF TO BAY BLVD	Clearwater	Hotels and Motels (49 un	\$880,000	6,560	1952	\$17,320
343 CORONADO DR	Clearwater	Hotels and Motels (49 un	\$830,000	3,080	1953	\$17,030
421 HAMDEN DR	Clearwater	Hotels and Motels (49 un	\$800,000	4,662	1955	\$17,417
333 CORONADO DR	Clearwater	Hotels and Motels (49 un	\$775,000	2,329	1952	\$14,901
1744 N FT HARRISON AVE	Clearwater	Hotels and Motels (49 un	\$730,000	6,992	1957	\$14,321
609 CYPRUS AVE	Clearwater	Hotels and Motels (49 un	\$675,000	2,890	1957	\$13,547
42 SOMERSET ST	Clearwater	Hotels and Motels (49 un	\$660,000	2,734	1950	\$13,353
1806 N FT HARRISON AVE	Clearwater	Hotels and Motels (49 un	\$640,000	2,867	1950	\$12,579

Address	City	Type	Market Value	Sq Ft	Year	Annual Tax
1371 GULF TO BAY BLVD	Clearwater	Hotels and Motels (49 un	\$635,000	6,019	1946	\$12,676
427 POINSETTIA AVE	Clearwater	Hotels and Motels (49 un	\$600,000	4,348	1950	\$11,611
20 GLENDALE ST	Clearwater	Hotels and Motels (49 un	\$545,000	2,281	1940	\$11,611
1295 CLEVELAND ST	Clearwater	Hotels and Motels (49 un	\$535,000	2,950	1951	\$9,958
18736 US HIGHWAY 19 N	Clearwater	Hotels and Motels (49 un	\$505,000	4,598	1950	\$9,676
26 S HILLCREST AVE	Clearwater	Hotels and Motels (49 un	\$460,000	4,091	1954	\$9,192
1800 N FT HARRISON AVE	Clearwater	Hotels and Motels (49 un	\$425,000	2,484	1947	\$8,321
1770 N FT HARRISON AVE	Clearwater	Hotels and Motels (49 un	\$380,000	2,836	1948	\$7,451
12600 US HIGHWAY 19 N	Clearwater	Hotels and Motels (49 un	\$335,000	3,513	1951	\$6,097
14650 66TH ST N	Clearwater	Hotels and Motels (49 un	\$250,000	3,031	1952	\$4,507

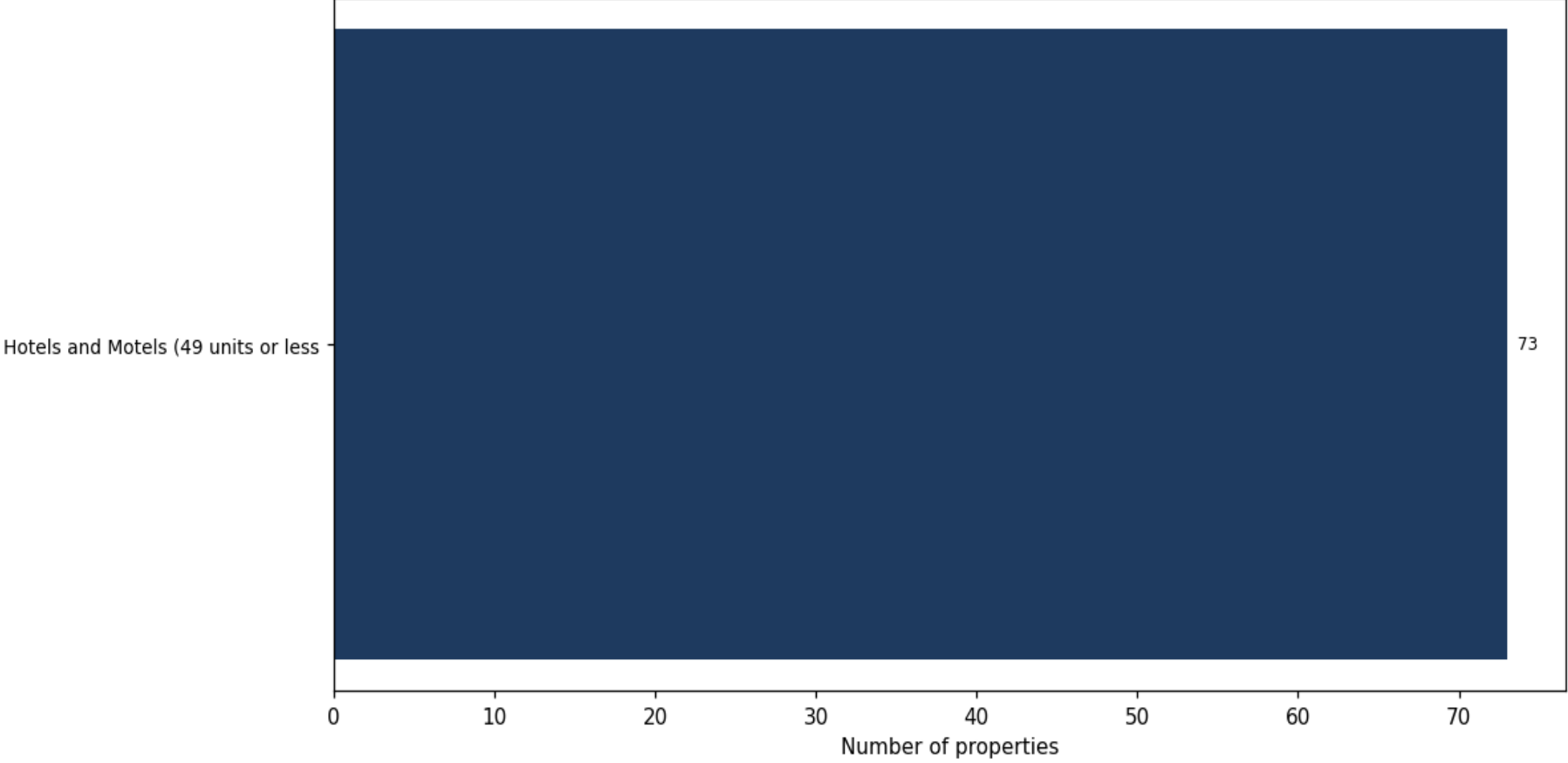
Market value distribution (n=73, top 1% trimmed for readability)



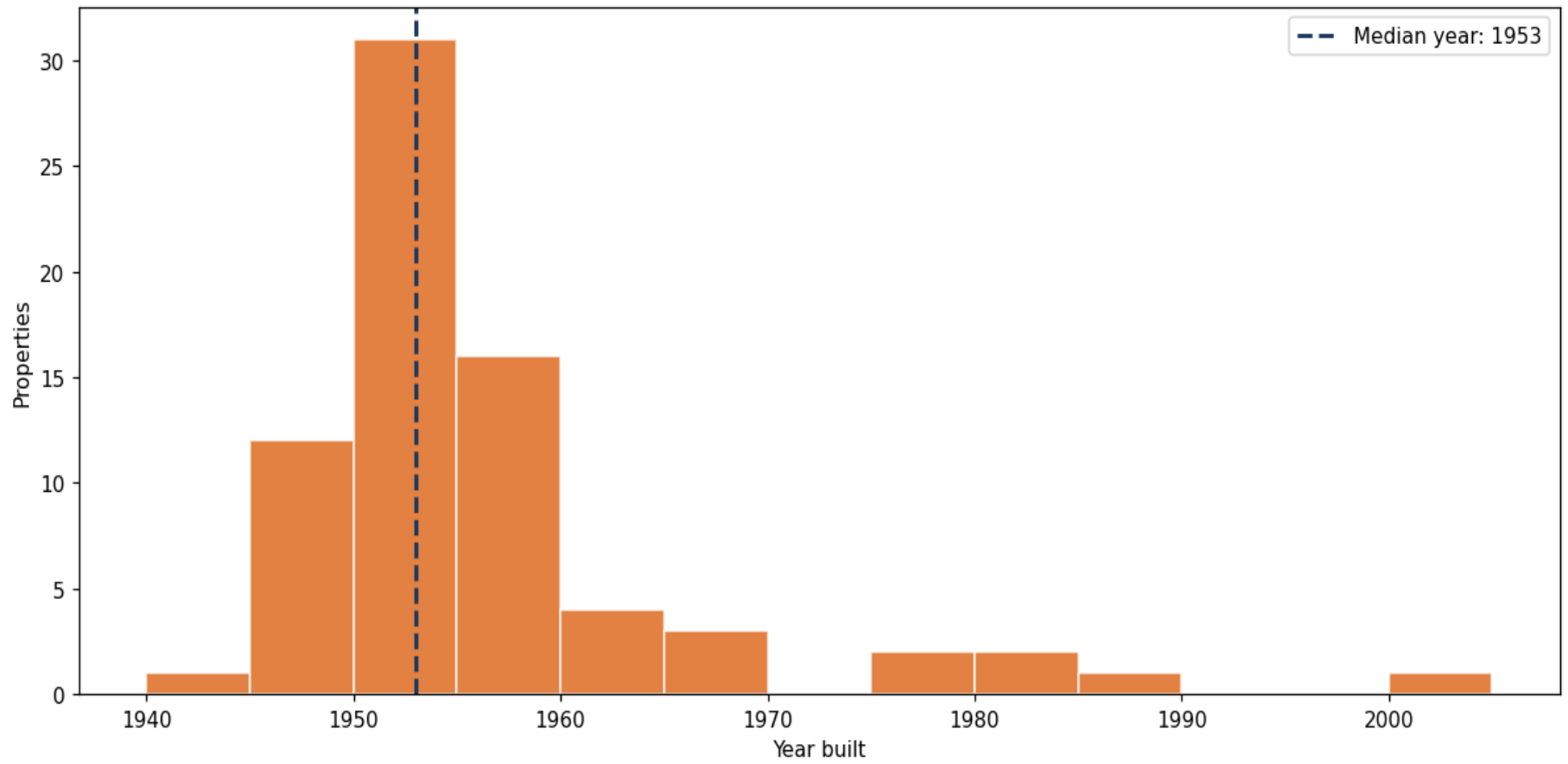
Building size vs. market value (n=71, outliers trimmed)



Top property types by count



Year built distribution (5-year buckets)



Market value vs. assessed value (gap = untaxed appreciation)

