

Pinellas Property Market Report

70 matching properties • May 30, 2026

Filters applied	Headline numbers
City: Clearwater	Properties matched: 70
Property type: Apartments (50 units or more)	Median market value: \$20,100,000
	Mean market value: \$26,836,080
	Min / Max: \$488,485 / \$93,750,903
	Mean square footage: 179,955

Top 70 properties by market value

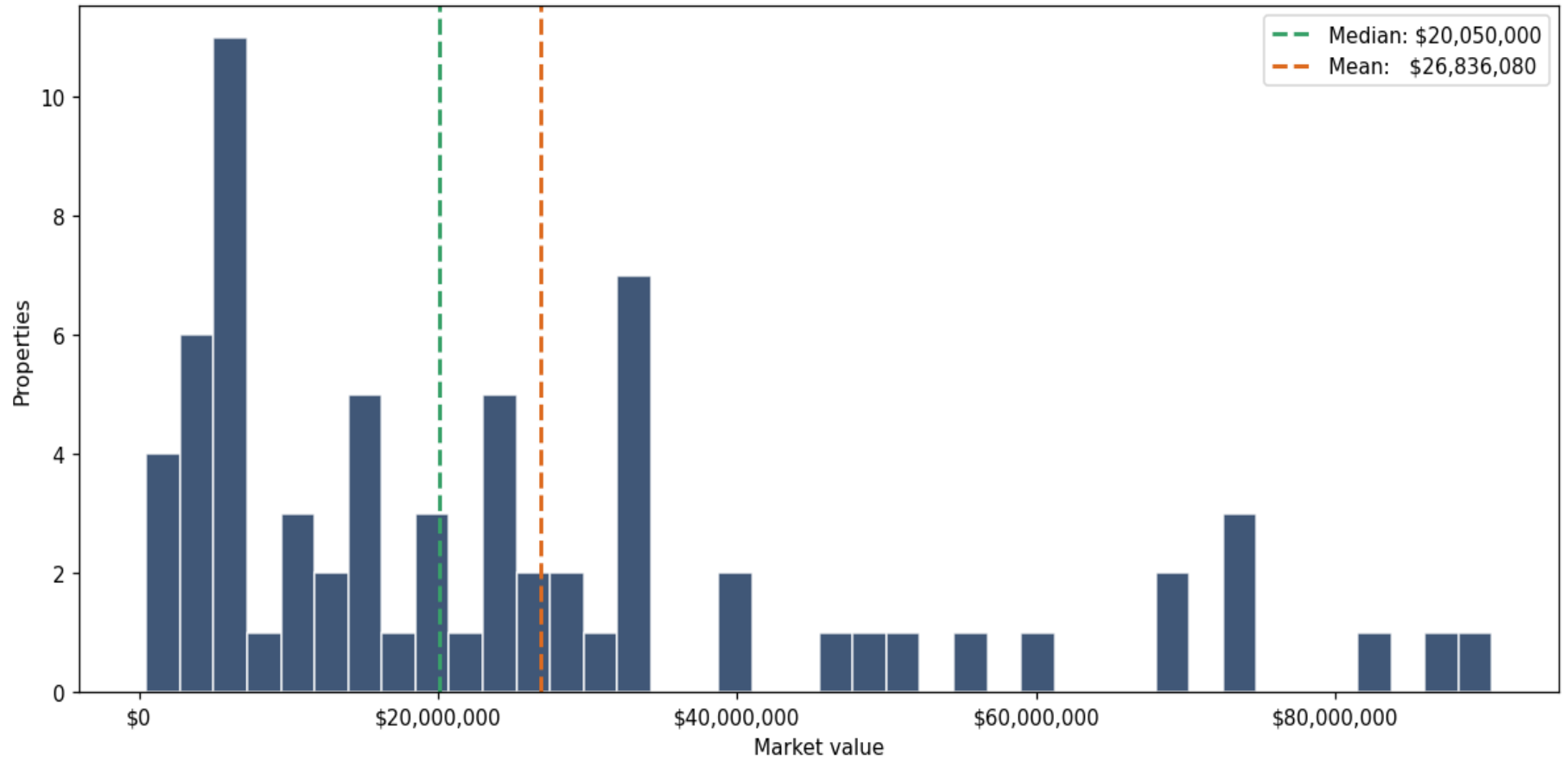
Address	City	Type	Market Value	Sq Ft	Year	Annual Tax
2031 GLASS LOOP	Clearwater	Apartments (50 units or	\$93,750,903	419,956	2023	\$1,993,277
19337 US HIGHWAY 19 N	Clearwater	Apartments (50 units or	\$90,500,000	408,853	2019	\$1,814,269
2855 GULF TO BAY BLVD	Clearwater	Apartments (50 units or	\$88,100,000	409,094	2015	\$1,704,929
1099 N MCMULLEN BOOTH RD	Clearwater	Apartments (50 units or	\$83,585,959	415,952	1987	\$1,442,164
19320 US HIGHWAY 19 N	Clearwater	Apartments (50 units or	\$74,000,000	314,110	2021	\$1,311,112
1551 FLOURNOY CIR W	Clearwater	Apartments (50 units or	\$73,000,000	367,520	2018	\$1,412,711
2729 SEVILLE BLVD	Clearwater	Apartments (50 units or	\$72,900,000	379,029	1994	\$1,470,767
2981 GULF TO BAY BLVD	Clearwater	Apartments (50 units or	\$70,000,000	411,443	2023	\$1,219,189
2524 ALEXANDER PL	Clearwater	Apartments (50 units or	\$69,400,000	345,908	2017	\$1,298,533
19135 US HIGHWAY 19 N	Clearwater	Apartments (50 units or	\$60,000,000	402,484	1971	\$1,006,314
2168 DRUID RD	Clearwater	Apartments (50 units or	\$54,750,000	264,733	2014	\$986,962
100 PARK PLACE BLVD	Clearwater	Apartments (50 units or	\$50,100,000	285,325	1998	\$942,452
2652 N MCMULLEN BOOTH RD	Clearwater	Apartments (50 units or	\$49,600,000	300,041	1989	\$841,821

Address	City	Type	Market Value	Sq Ft	Year	Annual Tax
13621 FEATHER SOUND CIR E	Clearwater	Apartments (50 units or	\$45,500,000	251,941	1985	\$842,138
101 S OLD COACHMAN RD	Clearwater	Apartments (50 units or	\$40,600,000	219,296	1990	\$711,193
901 CLEVELAND ST	Clearwater	Apartments (50 units or	\$39,000,000	294,396	2017	\$856,581
101 PARK PLACE BLVD	Clearwater	Apartments (50 units or	\$33,900,000	181,152	1998	\$638,623
2545 NE COACHMAN RD	Clearwater	Apartments (50 units or	\$33,750,000	212,212	1984	\$650,234
1100 S MISSOURI AVE	Clearwater	Apartments (50 units or	\$33,449,169	192,440	2000	\$585,526
2690 DREW ST	Clearwater	Apartments (50 units or	\$33,350,000	442,114	1975	\$582,501
2550 STAG RUN BLVD	Clearwater	Apartments (50 units or	\$32,750,000	210,510	1985	\$615,400
3021 STATE ROAD 590	Clearwater	Apartments (50 units or	\$32,525,000	208,889	1991	\$631,849
1100 CLEVELAND ST	Clearwater	Apartments (50 units or	\$32,000,000	181,802	1972	\$554,796
503 FAIRWOOD AVE	Clearwater	Apartments (50 units or	\$31,000,000	205,474	1974	\$507,995
2481 NE COACHMAN RD	Clearwater	Apartments (50 units or	\$29,350,000	179,081	1985	\$567,987
530 FAIRWOOD AVE	Clearwater	Apartments (50 units or	\$27,500,000	152,700	1973	\$493,481
1820 SUNSET POINT RD	Clearwater	Apartments (50 units or	\$26,500,000	217,400	1972	\$503,157
25 N BELCHER RD	Clearwater	Apartments (50 units or	\$26,275,000	146,403	1985	\$503,157
1121 DRUID RD E	Clearwater	Apartments (50 units or	\$24,400,000	157,475	1949	\$454,777
21227 US HIGHWAY 19 N	Clearwater	Apartments (50 units or	\$24,400,000	220,747	1973	\$441,230
2909 GULF TO BAY BLVD	Clearwater	Apartments (50 units or	\$23,200,000	190,525	1970	\$443,165
2900 DREW ST	Clearwater	Apartments (50 units or	\$23,200,000	368,411	1998	\$447,036
106 HAMPTON RD	Clearwater	Apartments (50 units or	\$23,000,000	121,651	2013	\$425,748
2100 NURSERY RD	Clearwater	Apartments (50 units or	\$21,500,000	188,788	1968	\$411,234
200 STARCREST DR	Clearwater	Apartments (50 units or	\$20,100,000	170,332	1974	\$392,850
2065 N HIGHLAND AVE	Clearwater	Apartments (50 units or	\$20,000,000	211,996	1970	\$377,368
551 N SATURN AVE	Clearwater	Apartments (50 units or	\$19,300,000	212,832	1972	\$373,497
2692 ENTERPRISE RD E	Clearwater	Apartments (50 units or	\$18,000,000	118,021	1985	\$358,016

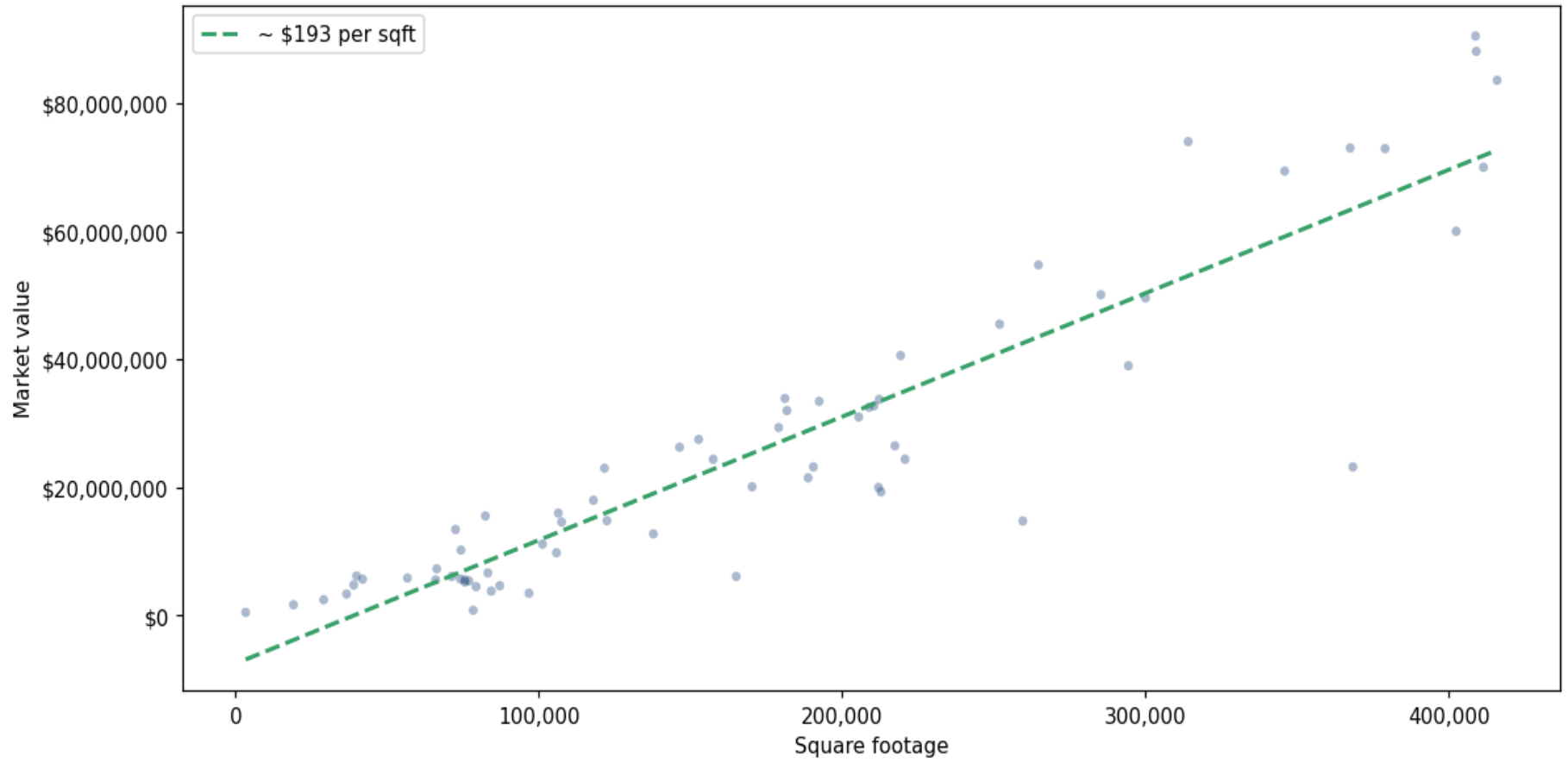
Address	City	Type	Market Value	Sq Ft	Year	Annual Tax
2775 ENTERPRISE RD E	Clearwater	Apartments (50 units or	\$16,000,000	106,412	1984	\$319,311
2717 SEVILLE BLVD	Clearwater	Apartments (50 units or	\$15,550,000	82,370	2009	\$313,506
2159 NURSERY RD	Clearwater	Apartments (50 units or	\$14,800,000	122,466	1973	\$276,736
1200 S MISSOURI AVE	Clearwater	Apartments (50 units or	\$14,750,000	259,590	2000	\$276,736
1770 N BETTY LN	Clearwater	Apartments (50 units or	\$14,593,457	107,519	1983	\$254,639
1100 DRUID RD E	Clearwater	Apartments (50 units or	\$13,430,098	72,543	1973	\$236,845
801 CHESTNUT ST	Clearwater	Apartments (50 units or	\$12,750,000	137,768	1971	\$146,320
2230 NURSERY RD	Clearwater	Apartments (50 units or	\$11,150,000	101,216	1968	\$246,741
2285 STATE ROAD 580	Clearwater	Apartments (50 units or	\$10,215,552	74,328	1984	\$180,811
1791 SHERWOOD ST	Clearwater	Apartments (50 units or	\$9,800,000	105,812	1972	\$189,652
730 N OLD COACHMAN RD	Clearwater	Apartments (50 units or	\$7,300,000	66,359	1985	\$149,012
610 SALLY LN	Clearwater	Apartments (50 units or	\$6,650,000	83,193	1973	\$137,401
1318 FRANKLIN ST	Clearwater	Apartments (50 units or	\$6,171,350	39,899	1991	\$107,915
200 STARCREST DR	Clearwater	Apartments (50 units or	\$6,100,000	71,335	1973	\$119,016
1001 N MARTIN LUTHER KING JR AVE	Clearwater	Apartments (50 units or	\$6,100,000	165,098	1949	\$127,725
1000 N KEENE RD	Clearwater	Apartments (50 units or	\$5,852,589	56,682	1983	\$103,878
2075 N HIGHLAND AVE	Clearwater	Apartments (50 units or	\$5,700,000	74,138	1972	\$116,113
211 S PROSPECT AVE	Clearwater	Apartments (50 units or	\$5,673,426	41,888	1985	\$105,157
1520 JEFFORDS ST	Clearwater	Apartments (50 units or	\$5,550,000	65,992	1973	\$166,429
2035 KINGS HWY	Clearwater	Apartments (50 units or	\$5,550,000	75,624	1970	\$106,437
2025 ROGERS ST	Clearwater	Apartments (50 units or	\$5,400,000	76,950	1973	\$108,856
1875 SUNSET POINT RD	Clearwater	Apartments (50 units or	\$5,225,000	75,630	1971	\$100,631
1581 GREENLEA DR	Clearwater	Apartments (50 units or	\$4,766,712	38,992	1986	\$85,616
803 WOODLAWN LOOP	Clearwater	Apartments (50 units or	\$4,650,000	87,114	2019	\$92,891
380 S MARTIN LUTHER KING JR AVE	Clearwater	Apartments (50 units or	\$4,500,000	79,314	2019	\$90,955

Address	City	Type	Market Value	Sq Ft	Year	Annual Tax
608 ELDRIDGE ST	Clearwater	Apartments (50 units or	\$3,800,000	84,321	2016	\$80,312
1225 S HIGHLAND AVE	Clearwater	Apartments (50 units or	\$3,475,000	96,763	2011	\$67,249
2010 KINGS HWY	Clearwater	Apartments (50 units or	\$3,350,000	36,600	1986	\$68,700
1251 JEFFORDS ST	Clearwater	Apartments (50 units or	\$2,450,000	29,055	1972	\$47,413
1255 JEFFORDS ST	Clearwater	Apartments (50 units or	\$1,675,000	19,120	1973	\$32,415
1260 CLEVELAND ST	Clearwater	Apartments (50 units or	\$822,933	78,366	2025	\$303,466
1003 WEST AVE	Clearwater	Apartments (50 units or	\$488,485	3,340	2002	\$8,367

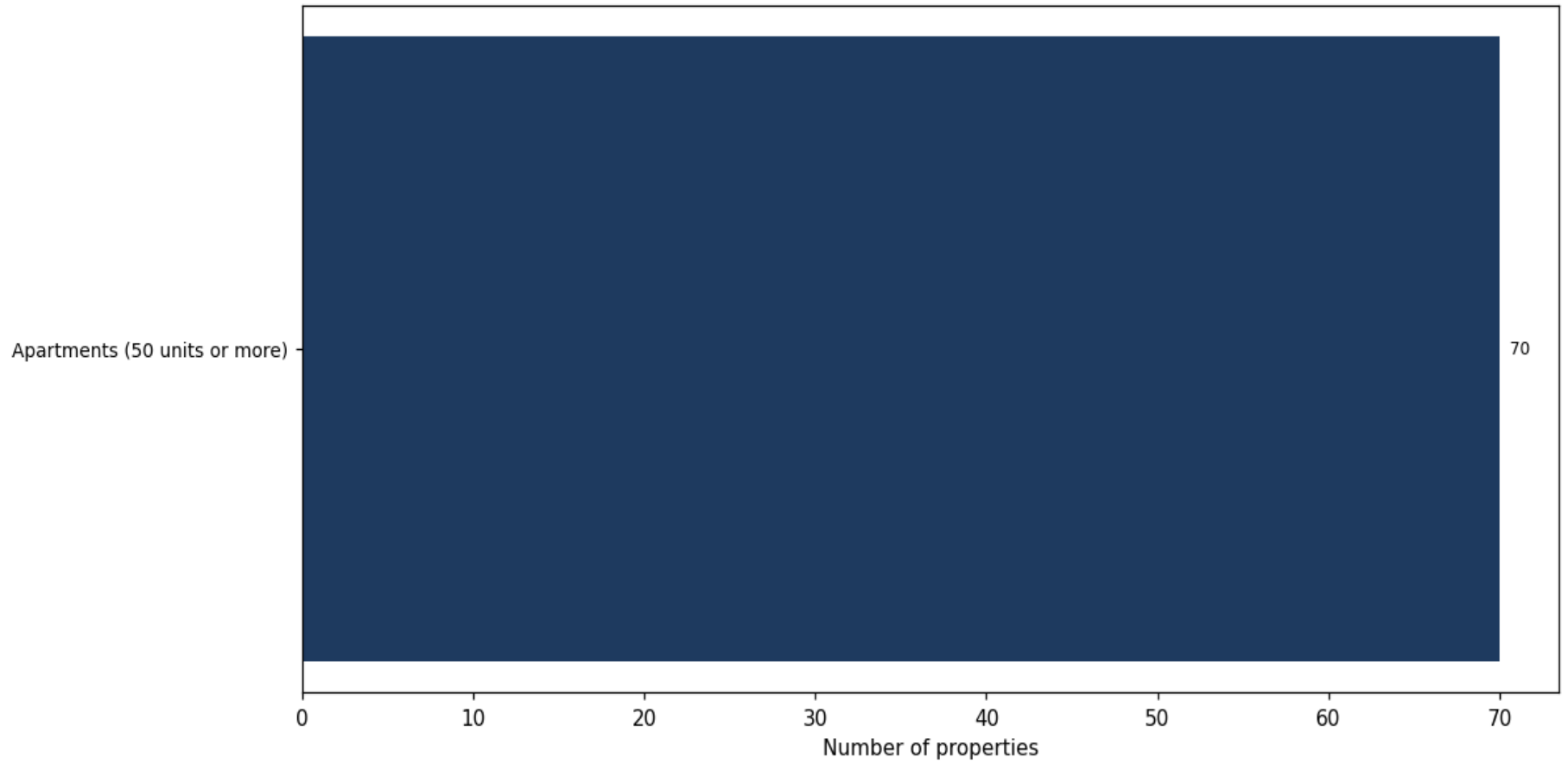
Market value distribution (n=70, top 1% trimmed for readability)



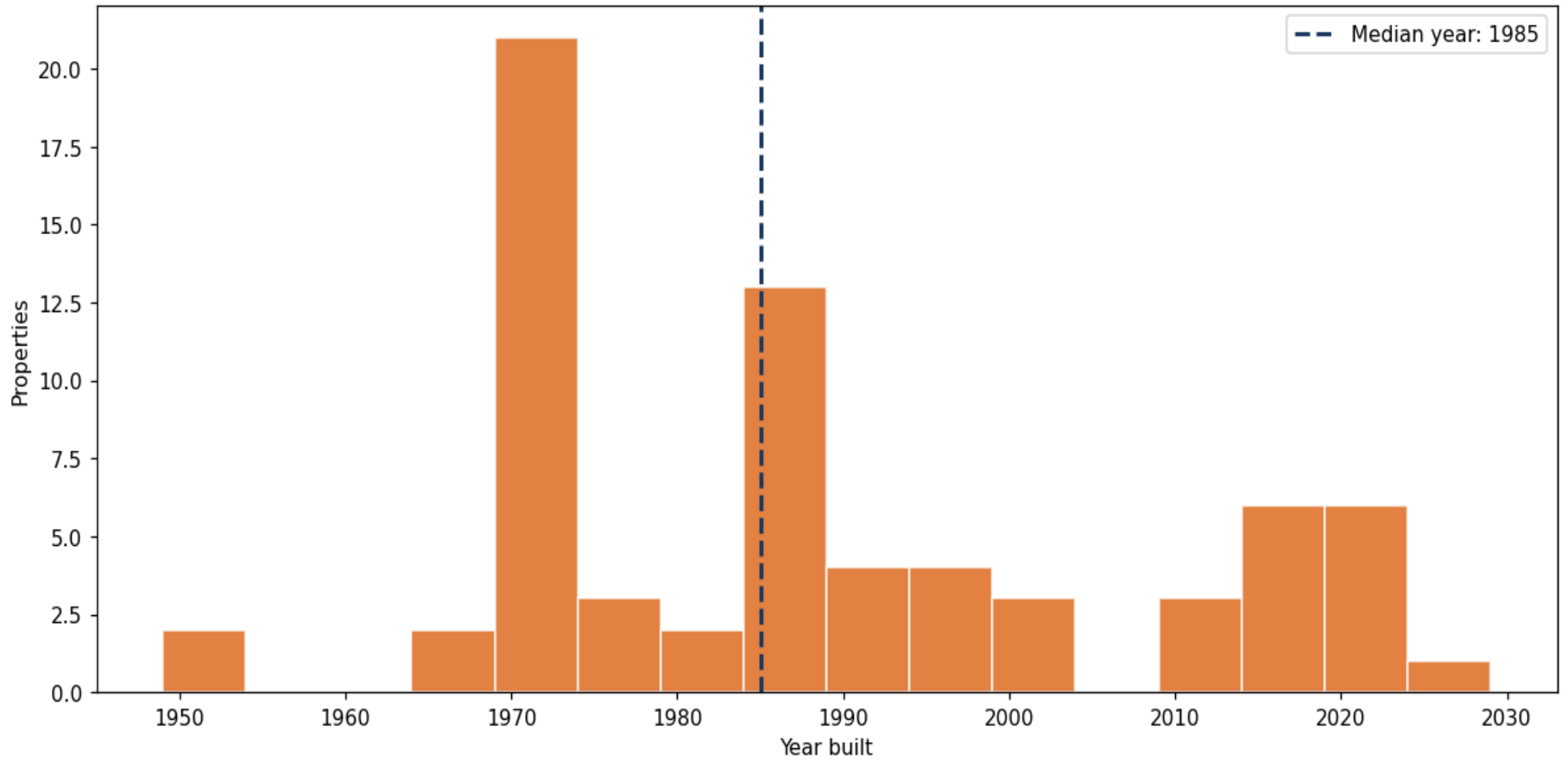
Building size vs. market value (n=68, outliers trimmed)



Top property types by count



Year built distribution (5-year buckets)



Market value vs. assessed value (gap = untaxed appreciation)

